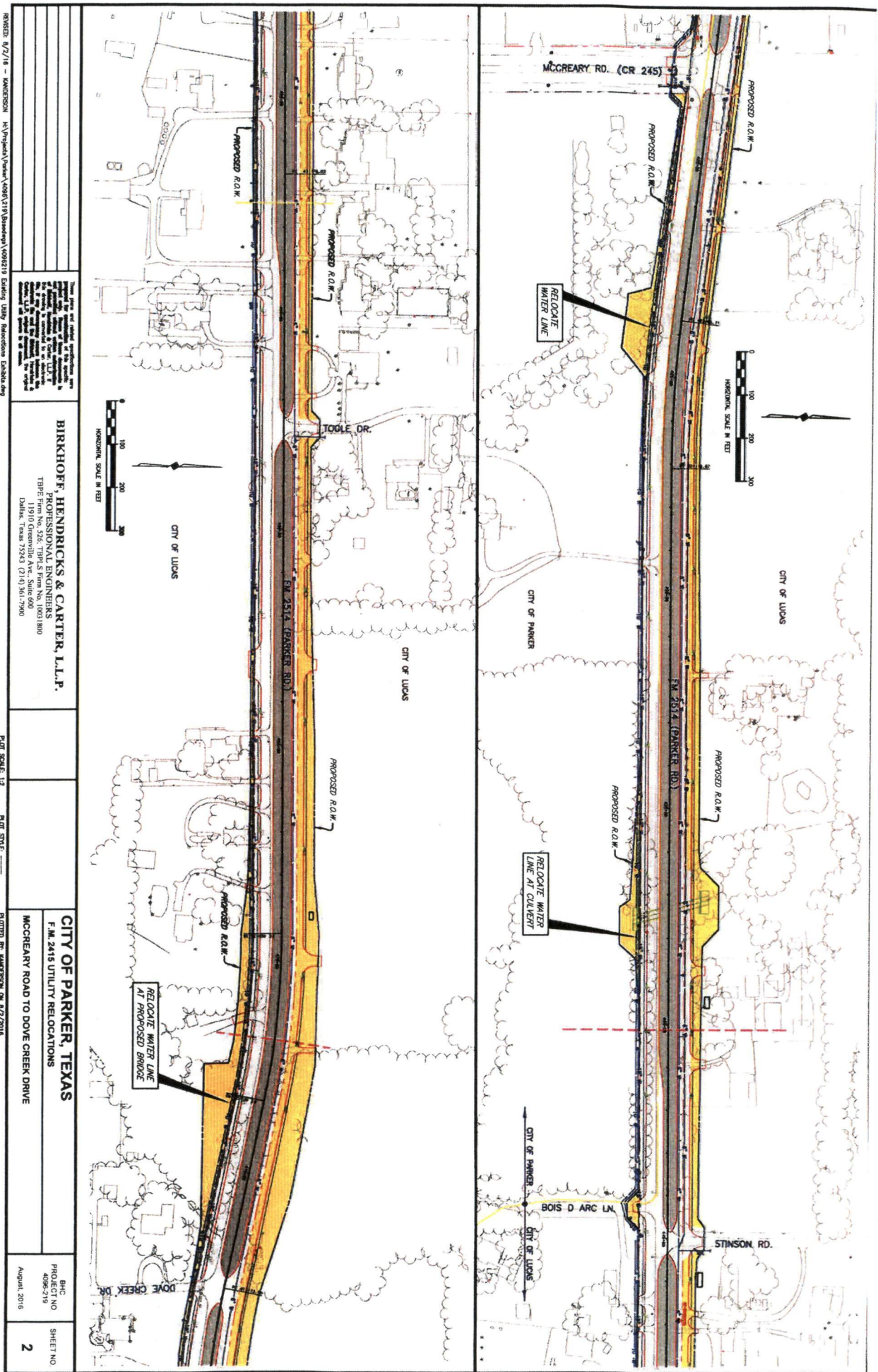


REVISION: 8/2/16 - WANDSON K:\Projects\Utility\4098\218\Revisions\4098218 Building Utility Relocations Exhibit.dwg Project: City of Parker, Texas Project No: 4098-218 Title: F.M. 2551 Utility Relocations Date: 8/2/16 Author: J. L. Carter Checker: J. L. Carter Designer: J. L. Carter	BIRKHOFF, HENDRICKS & CARTER, L.P. PROFESSIONAL ENGINEERS TITLE FROM NO. 536; TIRAS FROM NO. 1001800 Dallas, Texas 75243 (214) 361-7900	CITY OF PARKER, TEXAS F.M. 2415 UTILITY RELOCATIONS F.M. 2551 TO MCCREEARY ROAD	BHC PROJECT NO 4098-218 August 2016	SHEET NO 1



These Plans are the property of Birkhoff, Hendricks & Carter, L.L.P. and are to be used only for the project and location specifically identified herein. No part of these Plans may be reproduced, stored in a retrieval system, or transmitted in any form or by any means, electronic, mechanical, photocopying, recording, or by any information storage and retrieval system, without the prior written consent of Birkhoff, Hendricks & Carter, L.L.P.

BIRKHOFF, HENDRICKS & CARTER, L.L.P.
 PROFESSIONAL ENGINEERS
 THREE FIFTH FLOOR, 526 THIRDS FLOOR NO. 10031800
 1501 GREENWOOD AVE., SUITE 500
 DALLAS, TEXAS 75243 (214) 381-2900

CITY OF PARKER, TEXAS
 F.M. 2415 UTILITY RELOCATIONS
 MC CREARY ROAD TO DOVE CREEK DRIVE

BHC
 UN
 406-219
 SHEET NO
2

AUGUST 2016