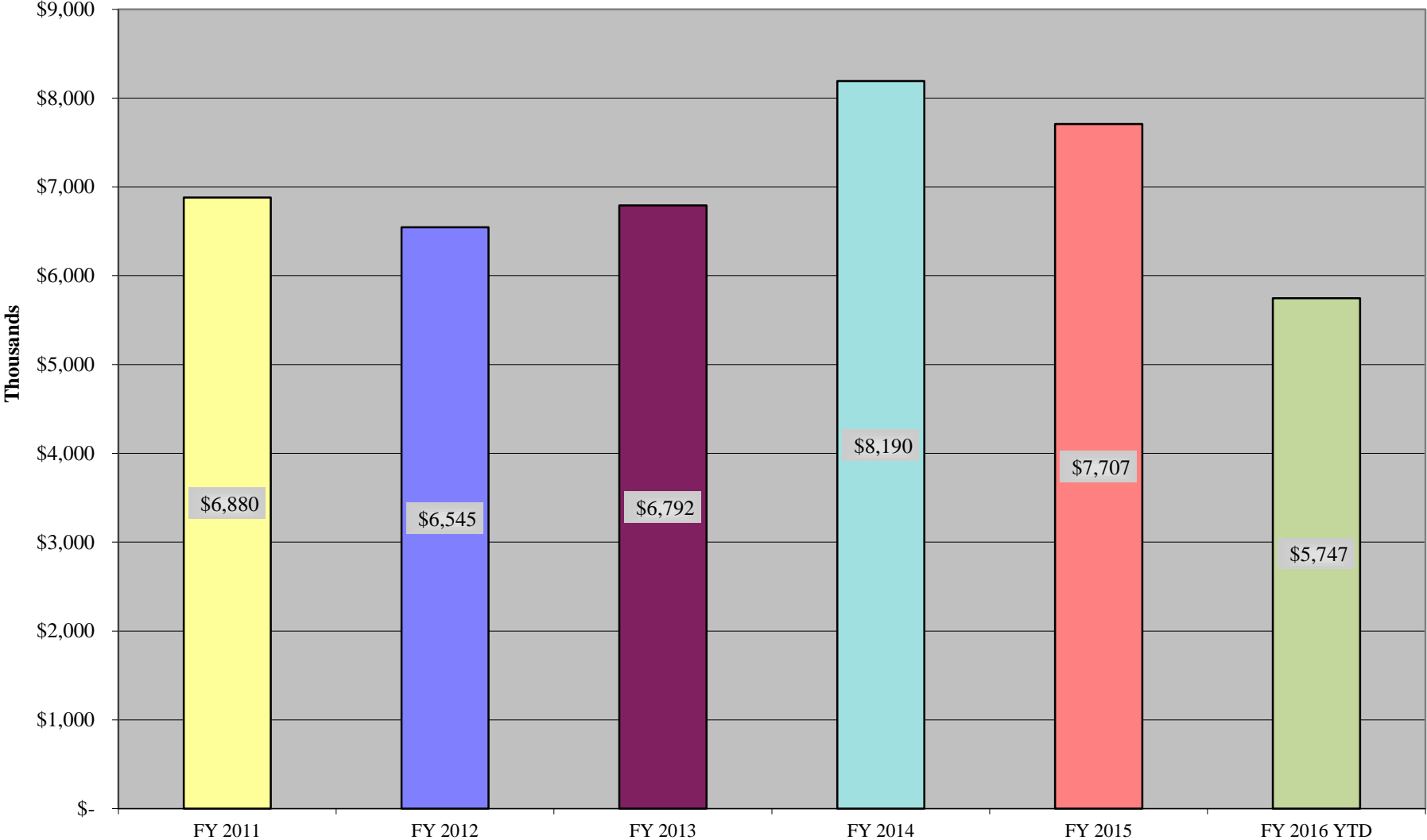
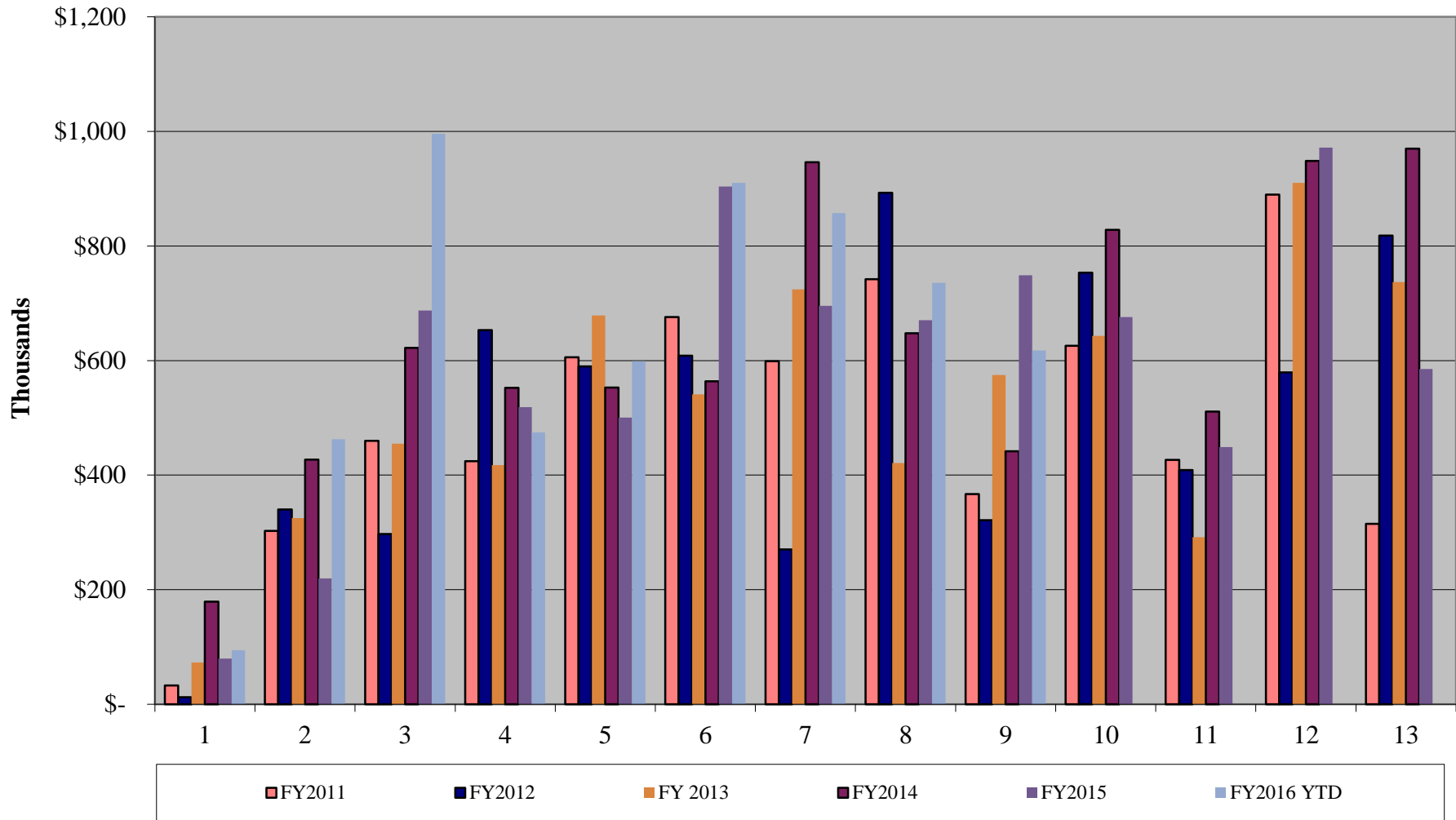


**Indigent Defense Expenditures by Fiscal Year**  
**As of June 30, 2016**  
(Includes Ad Litem, Juvenile and Capital Murder)



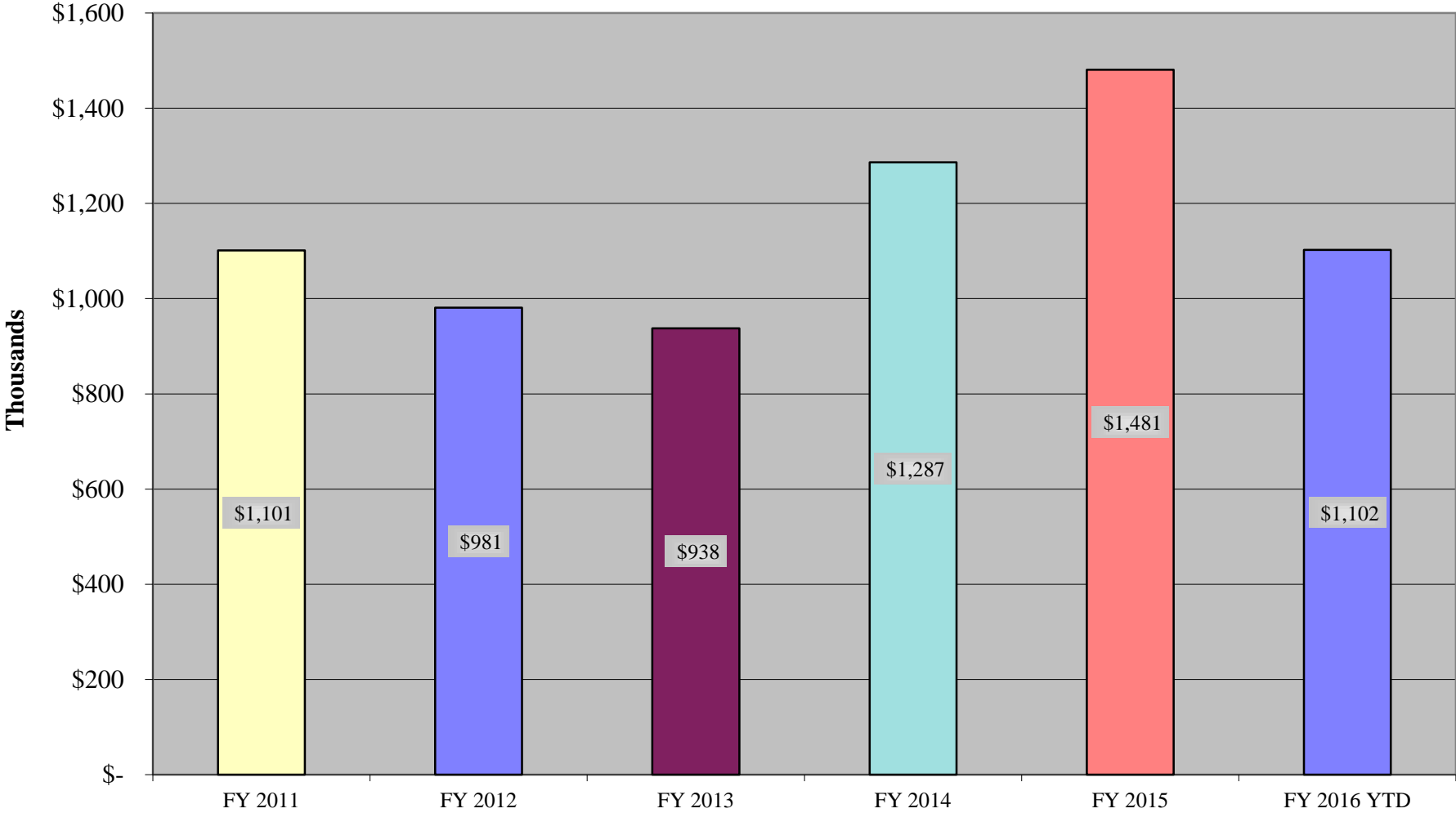
## Indigent Defense Expenditures by Month (All Courts) As of June 30, 2016



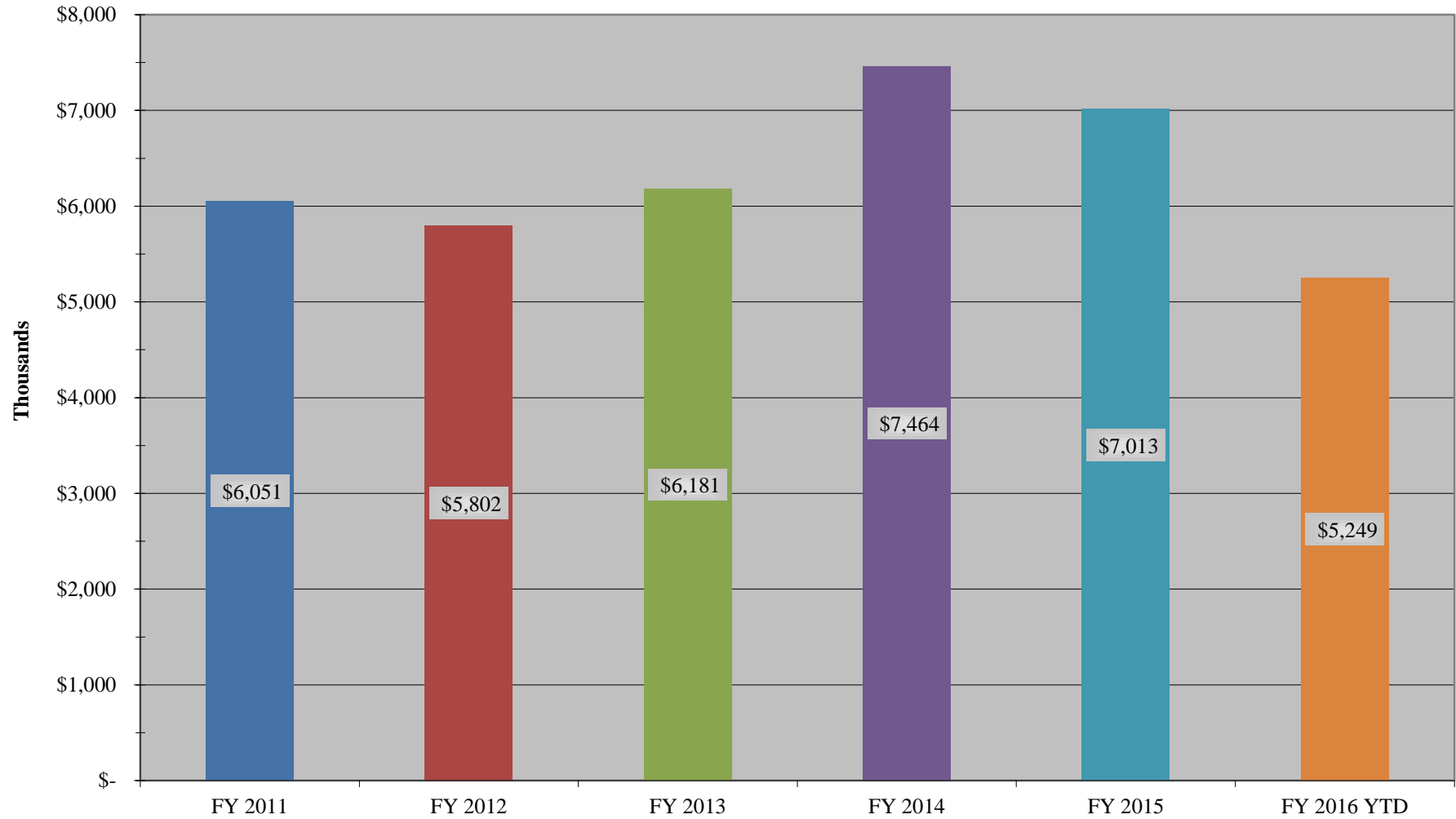
\*Expenditures in the 12th period include payments made in the prior year after the year-end causing a spike in the 12th period and a reductions in the 1st and 2nd periods of the new year

# Ad Litem Expenditures by Fiscal Year

As of June 30, 2016



**Court Appointed Attorney Expenditures by Fiscal Year**  
**As of June 30, 2016**  
**All Courts**



Indigent Defense - Exp by Cat  
As of June 30, 2016

New	Category	FY 2011	FY 2012	FY 2013	FY 2014	FY 2015	FY 2016 YTD
64-20	Court Appointed Attorney	\$ 6,051,194	\$ 5,801,520	\$ 6,181,293	\$ 7,463,571	\$ 7,013,411	\$ 5,249,275
65-02	Statement of Facts	\$ 161,838	\$ 177,922	\$ 188,453	\$ 177,644	\$ 167,758	\$ 119,446
64-12	Interpreter	\$ 90,926	\$ 50,921	\$ 73,395	\$ 100,143	\$ 102,702	\$ 81,931
64-01	Consultants	\$ 4,929	\$ 1,054	\$ 1,200	\$ 2,800	\$ 4,899	\$ -
65-31	Witness Costs	\$ 205,142	\$ 161,591	\$ 93,266	\$ 125,314	\$ 94,461	\$ 104,276
64-03	Psychological Evaluations	\$ 93,789	\$ 110,601	\$ 69,827	\$ 139,203	\$ 97,589	\$ 54,578
65-32	Investigation Expense	\$ 229,672	\$ 198,662	\$ 155,713	\$ 147,457	\$ 192,078	\$ 117,250
87-01	Miscellaneous	\$ 66,353	\$ 42,457	\$ 29,300	\$ 34,168	\$ 33,804	\$ 20,250
<b>FY Totals</b>		<b>\$ 6,903,843</b>	<b>\$ 6,544,729</b>	<b>\$ 6,792,447</b>	<b>\$ 8,190,301</b>	<b>\$ 7,706,701</b>	<b>\$ 5,747,005</b>

**Summary of Indigent Defense Expenditures and Cases per Court by Year**  
As of June 30, 2016

By Court	FY 2011		FY 2012		FY 2013		FY 2014		FY 2015		FY 2016 YTD	
	Expenditures	Case Count*	Expenditures	Case Count*	Expenditures	Case Count*	Expenditures	Case Count*	Expenditures	Case Count*	Expenditures	Case Count*
District Court 199	\$ 512,408	427	\$ 499,250	420	\$ 441,280	470	\$ 752,043	529	\$ 750,002	475	\$ 541,509	390
District Court 219	\$ 433,011	442	\$ 554,278	426	\$ 483,105	420	\$ 664,492	512	\$ 478,306	530	\$ 259,426	319
District Court 296	\$ 746,664	324	\$ 838,379	513	\$ 880,601	567	\$ 973,157	621	\$ 778,985	578	\$ 606,802	438
District Court 366	\$ 677,940	471	\$ 572,137	519	\$ 493,110	444	\$ 520,981	488	\$ 593,480	434	\$ 513,512	400
District Court 380	\$ 307,894	240	\$ 301,480	341	\$ 695,017	470	\$ 627,449	471	\$ 608,229	402	\$ 494,431	398
District Court 401	\$ 1,349,809	674	\$ 858,641	502	\$ 537,547	452	\$ 580,081	487	\$ 549,178	434	\$ 464,453	386
District Court 416	\$ 408,367	396	\$ 429,753	381	\$ 514,002	431	\$ 594,379	496	\$ 613,844	490	\$ 545,325	374
District Court 417	\$ 719,916	953	\$ 915,647	956	\$ 848,894	930	\$ 1,016,854	926	\$ 1,148,662	898	\$ 843,579	824
District Court 429	\$ 166,858	102	\$ 45,441	22	\$ 53,202	26	\$ 54,899	46	\$ 42,940	30	\$ 25,694	28
District Court 469									\$ 200	1	\$ 12,549	11
District Court 470									\$ 2,720	2	\$ 17,993	12
County Court 1	\$ 243,951	622	\$ 240,563	626	\$ 283,605	692	\$ 351,423	708	\$ 329,794	721	\$ 209,237	475
County Court 2	\$ 243,837	619	\$ 235,605	601	\$ 319,242	628	\$ 398,424	752	\$ 344,820	681	\$ 251,075	560
County Court 3	\$ 235,676	587	\$ 253,524	619	\$ 308,322	733	\$ 451,695	934	\$ 368,820	776	\$ 276,131	658
County Court 4	\$ 264,758	687	\$ 257,955	642	\$ 322,171	771	\$ 366,076	687	\$ 369,670	684	\$ 216,162	454
County Court 5	\$ 232,090	571	\$ 266,992	657	\$ 267,958	646	\$ 363,308	720	\$ 346,634	758	\$ 196,241	468
County Court 6	\$ 293,663	706	\$ 225,018	570	\$ 276,396	701	\$ 360,108	754	\$ 321,349	681	\$ 221,595	490
County Court 7											\$ 177,531	375
Probate	\$ 41,285	82	\$ 44,656	93	\$ 63,821	87	\$ 110,249	107	\$ 50,519	103	\$ 44,831	79
JP1	\$ 1,797	5	\$ 5,412	12	\$ 1,616	6	\$ 2,714	5	\$ 6,590	11	\$ 5,759	6
JP2	\$ -	-	\$ -	-	\$ -	-	\$ 1,208	-	\$ -	-	\$ -	-
JP3-1	\$ -	-	\$ -	-	\$ -	-	\$ -	-	\$ -	-	\$ -	-
JP3-2	\$ 225	-	\$ -	-	\$ 2,556	2	\$ 760	-	\$ 1,960	2	\$ 1,100	1
JP4	\$ -	-	\$ -	-	\$ -	-	\$ -	-	\$ -	-	\$ -	-
<b>Total</b>	<b>\$ 6,880,148</b>	<b>7,908</b>	<b>\$ 6,544,729</b>	<b>7,900</b>	<b>\$ 6,792,447</b>	<b>8,476</b>	<b>\$ 8,190,301</b>	<b>9,243</b>	<b>\$ 7,706,701</b>	<b>8,691</b>	<b>\$ 5,747,005</b>	<b>7,146</b>
<b>Average Case Cost</b>	<b>\$ 870</b>		<b>\$ 828</b>		<b>\$ 801</b>		<b>\$ 886</b>		<b>\$ 887</b>		<b>\$ 804</b>	

By Court Type	Expenditures	Case Count*	Expenditures	Case Count*	Expenditures	Case Count*	Expenditures	Case Count*	Expenditures	Case Count*	Expenditures	Case Count*
District Court	\$ 5,322,866	4,029	\$ 5,015,006	4,080	\$ 4,946,760	4,210	\$ 5,784,336	4,576	\$ 5,566,546	4,274	\$ 4,325,272	3,580
County Court	\$ 1,555,260	3,874	\$ 1,524,312	3,808	\$ 1,841,515	4,258	\$ 2,401,283	4,662	\$ 2,131,605	4,404	\$ 1,592,802	3,559
JP Court	\$ 2,022	5	\$ 5,412	12	\$ 4,173	8	\$ 4,682	5	\$ 8,550	13	\$ 6,859	7
<b>Total</b>	<b>\$ 6,880,148</b>	<b>7,908</b>	<b>\$ 6,544,729</b>	<b>7,900</b>	<b>\$ 6,792,447</b>	<b>8,476</b>	<b>\$ 8,190,301</b>	<b>9,243</b>	<b>\$ 7,706,701</b>	<b>8,691</b>	<b>\$ 5,747,005</b>	<b>7,146</b>

By Case Type	Expenditures	Case Count*	Expenditures	Case Count*	Expenditures	Case Count*	Expenditures	Case Count*	Expenditures	Case Count*	Expenditures	Case Count*
Felony	\$ 1,875,727	2,433	\$ 1,849,443	2,515	\$ 1,831,607	2,329	\$ 1,841,569	2,217	\$ 1,387,721	1,780	\$ 1,219,245	1,419
Misdemeanor	\$ 1,201,193	3,179	\$ 1,164,401	3,083	\$ 1,363,640	3,317	\$ 1,669,733	3,429	\$ 1,364,706	2,912	\$ 1,010,838	2,281
Ad Litem	\$ 1,101,275	302	\$ 980,786	290	\$ 937,612	275	\$ 1,286,640	311	\$ 1,480,737	411	\$ 1,102,263	296
Juvenile	\$ 476,967	858	\$ 572,879	855	\$ 547,985	850	\$ 606,605	841	\$ 600,311	768	\$ 437,597	731
Capital Murder	\$ 1,079,001	20	\$ 715,047	30	\$ 619,761	22	\$ 557,963	17	\$ 472,905	12	\$ 240,080	8
Appeals *	\$ 369,374	104	\$ 402,512	97	\$ 396,553	108	\$ 452,092	109	\$ 447,213	103	\$ 295,436	62
Non-Indigent **	\$ 586,738	875	\$ 563,981	860	\$ 537,607	891	\$ 372,840	557	\$ 445,095	558	\$ 426,750	481
Mental Health	\$ -	0	\$ -	0	\$ 271,056	539	\$ 1,030,079	1,517	\$ 1,142,240	1,862	\$ 912,699	1,615
Other Expenses	\$ -	0	\$ -	0	\$ 1,025	3	\$ 38,152	61	\$ 79,177	88	\$ 72,879	81
Other	\$ 189,873	137	\$ 271,804	170	\$ 285,600	142	\$ 334,628	184	\$ 286,596	197	\$ 207,148	172
<b>Total</b>	<b>\$ 6,880,148</b>	<b>7,908</b>	<b>\$ 6,520,853</b>	<b>7,900</b>	<b>\$ 6,792,447</b>	<b>8,476</b>	<b>\$ 8,190,301</b>	<b>9,243</b>	<b>\$ 7,706,701</b>	<b>8,691</b>	<b>\$ 5,747,005</b>	<b>7,146</b>

Increase from Prior Yr	\$ 810,312	647	\$ (359,296)	-8	\$ 271,594	576	\$ 1,397,853	767	\$ (483,599)	-552	\$ (1,959,696)	-1,545
% Inc. from Prior Yr	12%	8%	-6%	-0.10%	4%	7%	17%	8%	-6%	-6%	-34%	-22%

\*Data was not captured until FY2007  
\*\*Data was not captured until FY2008

Indigent Defense - Monthly Sum  
As of June 30, 2016

	<b>FY2011</b>	<b>FY2012</b>	<b>FY 2013</b>	<b>FY2014</b>	<b>FY2015</b>	<b>FY2016 YTD</b>
Oct	\$ 32,606	\$ 12,090	\$ 72,725	\$ 179,250	\$ 79,697	\$ 94,320
Nov	\$ 302,505	\$ 340,019	\$ 325,002	\$ 426,856	\$ 219,818	\$ 462,657
Dec	\$ 460,002	\$ 296,921	\$ 454,899	\$ 621,979	\$ 687,506	\$ 995,720
Jan	\$ 424,457	\$ 653,294	\$ 417,424	\$ 552,314	\$ 518,651	\$ 474,365
Feb	\$ 605,621	\$ 589,923	\$ 678,771	\$ 552,946	\$ 500,358	\$ 598,853
Mar	\$ 675,848	\$ 608,253	\$ 540,854	\$ 563,935	\$ 904,071	\$ 910,153
Apr	\$ 598,833	\$ 270,037	\$ 724,469	\$ 946,214	\$ 695,663	\$ 857,455
May	\$ 742,012	\$ 892,827	\$ 421,339	\$ 647,669	\$ 670,532	\$ 735,768
Jun	\$ 366,943	\$ 321,483	\$ 574,856	\$ 441,608	\$ 748,697	\$ 617,714
Jul	\$ 625,721	\$ 753,532	\$ 643,213	\$ 828,057	\$ 675,717	\$ -
Aug	\$ 426,410	\$ 408,603	\$ 291,747	\$ 510,902	\$ 448,779	\$ -
Sep	\$ 889,777	\$ 579,362	\$ 910,316	\$ 948,698	\$ 971,905	\$ -
13th Period	\$ 314,953	\$ 818,385	\$ 736,831	\$ 969,873	\$ 585,308	\$ -
<b>FY Totals</b>	<b>\$ 6,588,890</b>	<b>\$ 5,726,344</b>	<b>\$ 6,055,616</b>	<b>\$ 7,220,427</b>	<b>\$ 7,121,393</b>	<b>\$ 5,747,005</b>