

45 RESIDENTIAL LOTS
FINAL PLAT
SECTION TWO
53.992 ACRES IN THE CARTER CLIFF SURVEY, ABSTRACT NO. 162, COLLIN COUNTY, TEXAS.

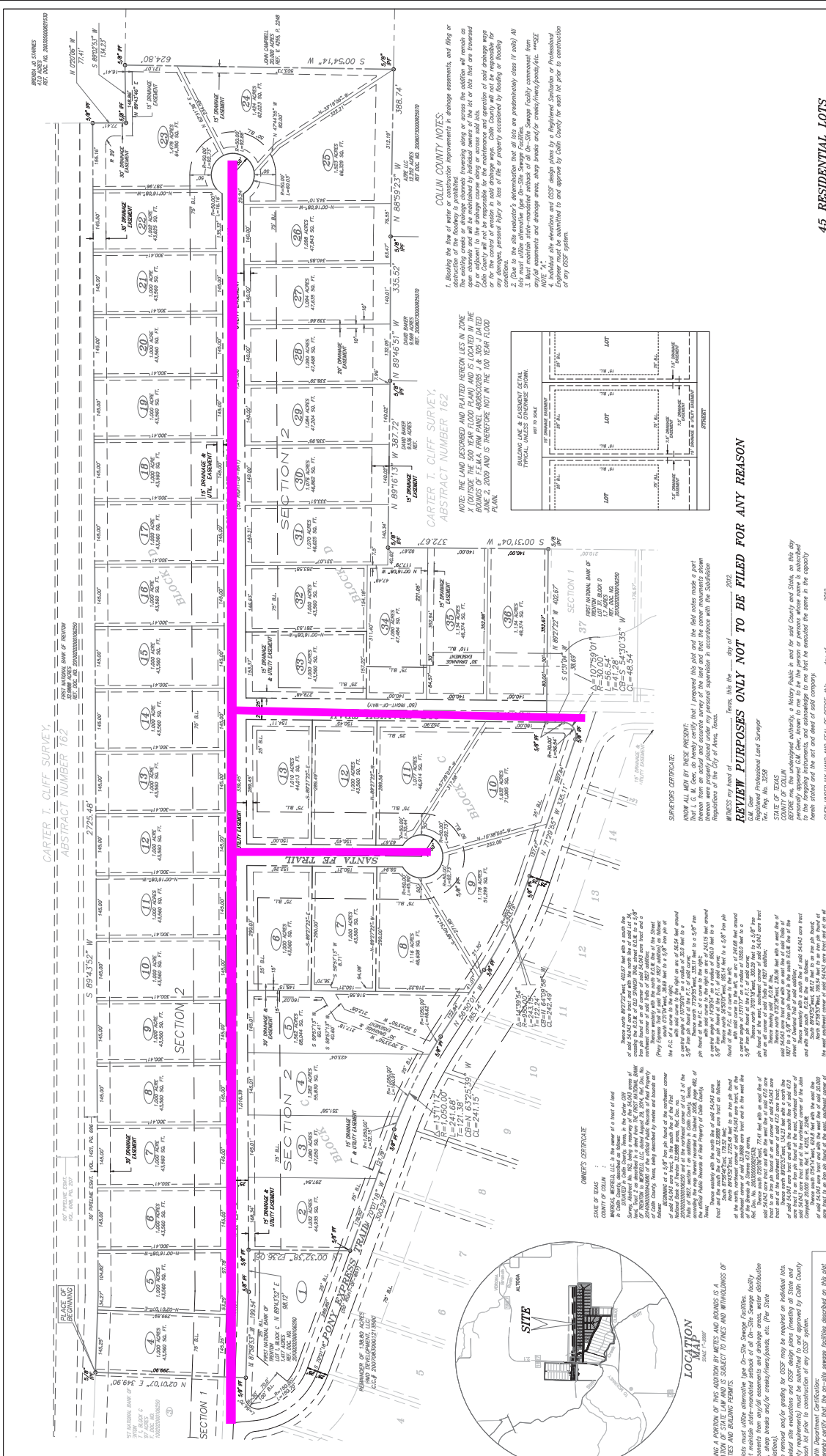
OWNER: **WPFIELD, LLC**
SURVEYOR: **G. M. CEEB**
107 WEST UNIVERSITY DRIVE
MCKINNEY, TEXAS 75069
PHONE: (972) 541-3939
WWW.GORDONWHEELERENGINEERING.COM

TRAILS OF 1827

FINAL PLAT
SECTION TWO
53.992 ACRES IN THE CARTER CLIFF SURVEY, ABSTRACT NO. 162, COLLIN COUNTY, TEXAS.

OWNER: **WPFIELD, LLC**
SURVEYOR: **G. M. CEEB**
107 WEST UNIVERSITY DRIVE
MCKINNEY, TEXAS 75069
PHONE: (972) 541-3939
WWW.GORDONWHEELERENGINEERING.COM

DATE: SEPTEMBER 29, 2014



COLLIN COUNTY NOTES:

I. Showing the flow of water or construction improvements in drainage easements, and filing or recording same with the County Clerk's office is a condition of the subdivision process and shall remain in effect until such time as the same are amended or removed by a recorded plat or order of the County Clerk.

II. The existing easements shown on this plat are subject to the amendments and modifications set forth herein. No other easements shall be shown on this plat unless they are specifically identified as such.

III. The area shown as being reserved for future use shall not be used for any purpose other than that for which it is reserved, and the same shall not be conveyed or otherwise disposed of until approved by the County Clerk.

IV. The area shown as being reserved for future use shall not be used for any purpose other than that for which it is reserved, and the same shall not be conveyed or otherwise disposed of until approved by the County Clerk.

CARTER T. CLIFF SURVEY, ABSTRACT NUMBER 162

NOTE: THE LAND DESCRIBED AND PLATED HEREON LIES IN ZONE 2 (ZONE OF THE 500 YEAR FLOOD PLAIN) AND IS LOCATED IN THE FLOOD HAZARD ZONING MAP OF COLLIN COUNTY, TEXAS, DATED JUNE 2, 2009 AND IS THEREFORE NOT IN THE 100 YEAR FLOOD PLAIN.

WITNESS MY HAND & SEAL OF OFFICE, this _____ day of _____, 2014.

Notary Public in and for the State of Texas

WITNESS MY HAND & SEAL OF OFFICE, this _____ day of _____, 2014.

Notary Public in and for the State of Texas

WITNESS MY HAND & SEAL OF OFFICE, this _____ day of _____, 2014.

Notary Public in and for the State of Texas

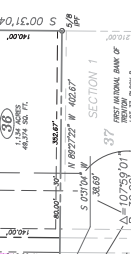
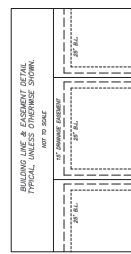


PLATE OF RECORDING

547' FRONT EASEMENT
30' DRIVEWAY
30' DRIVEWAY
50' DRIVEWAY
30' DRIVEWAY
30' DRIVEWAY

PLATE OF RECORDING

547' FRONT EASEMENT
30' DRIVEWAY
30' DRIVEWAY
50' DRIVEWAY
30' DRIVEWAY
30' DRIVEWAY

PLATE OF RECORDING

547' FRONT EASEMENT
30' DRIVEWAY
30' DRIVEWAY
50' DRIVEWAY
30' DRIVEWAY
30' DRIVEWAY

PLATE OF RECORDING

547' FRONT EASEMENT
30' DRIVEWAY
30' DRIVEWAY
50' DRIVEWAY
30' DRIVEWAY
30' DRIVEWAY

PLATE OF RECORDING

547' FRONT EASEMENT
30' DRIVEWAY
30' DRIVEWAY
50' DRIVEWAY
30' DRIVEWAY
30' DRIVEWAY

PLATE OF RECORDING

547' FRONT EASEMENT
30' DRIVEWAY
30' DRIVEWAY
50' DRIVEWAY
30' DRIVEWAY
30' DRIVEWAY

PLATE OF RECORDING

547' FRONT EASEMENT
30' DRIVEWAY
30' DRIVEWAY
50' DRIVEWAY
30' DRIVEWAY
30' DRIVEWAY

PLATE OF RECORDING

547' FRONT EASEMENT
30' DRIVEWAY
30' DRIVEWAY
50' DRIVEWAY
30' DRIVEWAY
30' DRIVEWAY

PLATE OF RECORDING

547' FRONT EASEMENT
30' DRIVEWAY
30' DRIVEWAY
50' DRIVEWAY
30' DRIVEWAY
30' DRIVEWAY

PLATE OF RECORDING

547' FRONT EASEMENT
30' DRIVEWAY
30' DRIVEWAY
50' DRIVEWAY
30' DRIVEWAY
30' DRIVEWAY

PLATE OF RECORDING

547' FRONT EASEMENT
30' DRIVEWAY
30' DRIVEWAY
50' DRIVEWAY
30' DRIVEWAY
30' DRIVEWAY

PLATE OF RECORDING

547' FRONT EASEMENT
30' DRIVEWAY
30' DRIVEWAY
50' DRIVEWAY
30' DRIVEWAY
30' DRIVEWAY

PLATE OF RECORDING

547' FRONT EASEMENT
30' DRIVEWAY
30' DRIVEWAY
50' DRIVEWAY
30' DRIVEWAY
30' DRIVEWAY

PLATE OF RECORDING

547' FRONT EASEMENT
30' DRIVEWAY
30' DRIVEWAY
50' DRIVEWAY
30' DRIVEWAY
30' DRIVEWAY

PLATE OF RECORDING

547' FRONT EASEMENT
30' DRIVEWAY
30' DRIVEWAY
50' DRIVEWAY
30' DRIVEWAY
30' DRIVEWAY

NOTES:

1. I hereby certify that the on-site sewage facilities described on this plat are in compliance with the requirements of the State of Texas Health Department.

2. I hereby certify that the on-site sewage facilities described on this plat are in compliance with the requirements of the State of Texas Health Department.

3. I hereby certify that the on-site sewage facilities described on this plat are in compliance with the requirements of the State of Texas Health Department.

NO. WORD ORIENTATION: EP - TRAILS OF 1827, PLATS 02000741.DWG, 02000742.DWG, 02000743.DWG