



COLLIN COUNTY

Office of the Purchasing Agent
2300 Bloomdale Road
Suite 3160
McKinney, Texas 75071
www.collincountytx.gov

COLLIN COUNTY, TEXAS

ADDENDUM No. Three (3)

IFB No. 2019-109

INVITATION FOR BID

FOR

CONSTRUCTION, ROAD: OUTER LOOP ACCESS ROAD, DALLAS PARKWAY TO EAST OF SH 289

DATE: June 7, 2019

NOTICE TO ALL PROSPECTIVE BIDDERS:

PLEASE MAKE THE FOLLOWING CHANGES TO THE INVITATION FOR BID:

The following sheets did not compile properly in addendum No. 2 and are now made available:

0067 Signal Layout Preston Rd (SH 289) Temp. Signal Layout (Addendum 2)

0068 Signal Layout Preston Rd (SH 289) Temp. Signal Summary (Addendum 2)

0206 Culvert Layout Culvert B STA 1008+00.00 (Addendum 2)

0287A EBML Bridge BNSF Overpass Beam Layout – Unit 1 (Addendum 2)

0289A EBML Bridge BNSF Overpass Beam Layout – Unit 2 (Addendum 2)

0323 Signal Layout Preston Rd (SH 289) Proposed Layout (Addendum 2)

0324 Signal Layout Preston Rd (SH 289) Proposed Signal Sum. (Addendum 2)

DELETE DOCUMENT: Page 031-038-2 004100 Bid Form (Addendum 2)

REPLACE WITH: Page 031-038-2 004100 Bid Form (Addendum 3)

ALL OTHER TERMS AND CONDITIONS OF THE BID AND SPECIFICATIONS REMAIN THE SAME.

SINCERELY,
MICHALYN RAINS, CPPO, CPPB
PURCHASING AGENT

md

SIGNS

(RELOCATE EXISTING SIGNS)

S PRESTON RD N

S-1

Choate Pkwy 100

S-3

N PRESTON RD S

S-4

Choate Pkwy 100

S-5

LEGEND
SCALE IN FEET
0 20 40

- 1-40 EXISTING SIGNAL HEAD AND NUMBER
- 1-40 TEMPORARY SIGNAL HEAD AND NUMBER
- EXISTING CONTROLLER
- S-1 F SIGN
- 2 SIGNAL HEAD NUMBER

EXISTING CAMERA
PROPOSED SIGNAL POLE/MAST ARM

- EXISTING SIGNAL POLE/MAST ARM
- PROPOSED POLES WITH SPAN WIRE
- GROUND ANCHOR
- PROPOSED LUMINAIRE ARM
- EXISTING GROUND BOX
- PROPOSED GROUND BOX
- EXISTING CONDUIT
- PROPOSED CONDUIT
- TRAFFIC FLOW

Ø2 TIMBER POLE NUMBERS
Ø2 CONDUIT RUN NUMBERS

Ø2 PHASE NUMBERS
Ø2 TIMBER POLE NUMBERS

Ø2 CONDUIT RUN NUMBERS
Ø2 PHASE NUMBERS

Ø2 TIMBER POLE NUMBERS
Ø2 CONDUIT RUN NUMBERS

Ø2 PHASE NUMBERS
Ø2 TIMBER POLE NUMBERS

Ø2 CONDUIT RUN NUMBERS
Ø2 PHASE NUMBERS

Ø2 TIMBER POLE NUMBERS
Ø2 CONDUIT RUN NUMBERS

Ø2 PHASE NUMBERS
Ø2 TIMBER POLE NUMBERS

Ø2 CONDUIT RUN NUMBERS
Ø2 PHASE NUMBERS

Ø2 TIMBER POLE NUMBERS
Ø2 CONDUIT RUN NUMBERS

Ø2 PHASE NUMBERS
Ø2 TIMBER POLE NUMBERS

Ø2 CONDUIT RUN NUMBERS
Ø2 PHASE NUMBERS

Ø2 TIMBER POLE NUMBERS
Ø2 CONDUIT RUN NUMBERS

Ø2 PHASE NUMBERS
Ø2 TIMBER POLE NUMBERS

Ø2 CONDUIT RUN NUMBERS
Ø2 PHASE NUMBERS

Ø2 TIMBER POLE NUMBERS
Ø2 CONDUIT RUN NUMBERS

Ø2 PHASE NUMBERS
Ø2 TIMBER POLE NUMBERS

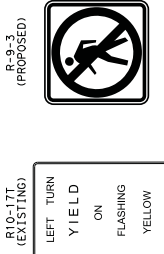
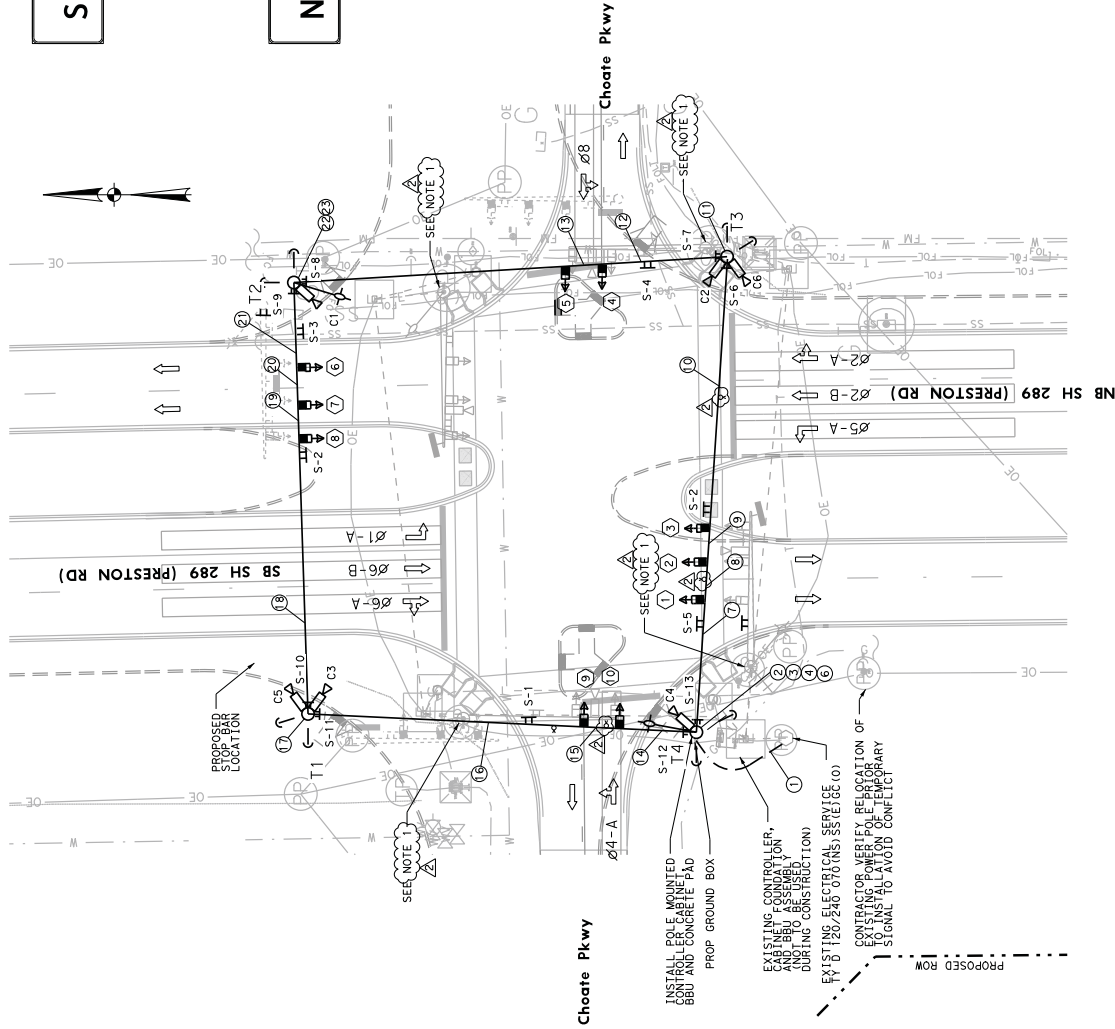
Ø2 CONDUIT RUN NUMBERS
Ø2 PHASE NUMBERS

Ø2 TIMBER POLE NUMBERS
Ø2 CONDUIT RUN NUMBERS

Ø2 PHASE NUMBERS
Ø2 TIMBER POLE NUMBERS

Ø2 CONDUIT RUN NUMBERS
Ø2 PHASE NUMBERS

Ø2 TIMBER POLE NUMBERS
Ø2 CONDUIT RUN NUMBERS



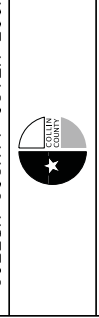
EXISTING PHASE DIAGRAM
Ø1 AND Ø5 ARE PROTECTED/PERMITTED LEFT TURN PHASES)

- NOTES:
1. ONCE THE TEMPORARY SIGNAL IS OPERATIONAL, REMOVE EXISTING SIGNAL HEADS AND SIGNAL POLES. REMOVE EXISTING SIGNAL POLES, POWER CORD AND REINSTALL EXISTING TRAFFIC SIGNAL POLES AND MAST ARMS PER PROPOSED CONSTRUCTION DOCUMENTS, DURING THE FIRST PHASE OF CONSTRUCTION (NO SEPARATE BID ITEM). AFTER RE-INSTALLATION, BAG ALL TRAFFIC SIGNAL HEADS, WHILE NOT IN USE.
 2. 4M SSR ANTENNA AS DIRECTED BY ENGINEER, THE MASTER CONTROLLER IS LOCATED AT SH 289 AND FM 1461.
 3. ONCE THE TEMPORARY SIGNAL IS OPERATIONAL, CONTRACTOR SHALL REMOVE ALL EXISTING SSR EQUIPMENT, VIVOS CAMERA AND RADAR SENSORS AND RETURN TO DALLAS DISTRICT SIGNAL SHOP.
 4. CONTRACTOR SHALL RELOCATE EXISTING EMERGENCY VEHICLE PREEMPTION EQUIPMENT TO THE TEMPORARY SIGNAL AND THEN TO THE PERMANENT SIGNALS. THE CITY OF CELINA WILL PROVIDE THE CABLE. CONTRACTOR SHALL COORDINATE WITH KIM BRANNER AT (972) 310-0185.



06/04/2019

NO.	DATE	REVISION	APPROVAL
2	06/04/2019	REVISED NOTES & ADDED TO LEGEND	SI



SIGNAL LAYOUT
PRESTON RD (SH 289)
TEMPORARY SIGNAL LAYOUT

JACOBS
FIRM REGISTRATION F-2366
BOND PROJECT NO. 07-034
SHEET 67

SHEET 1 OF 3

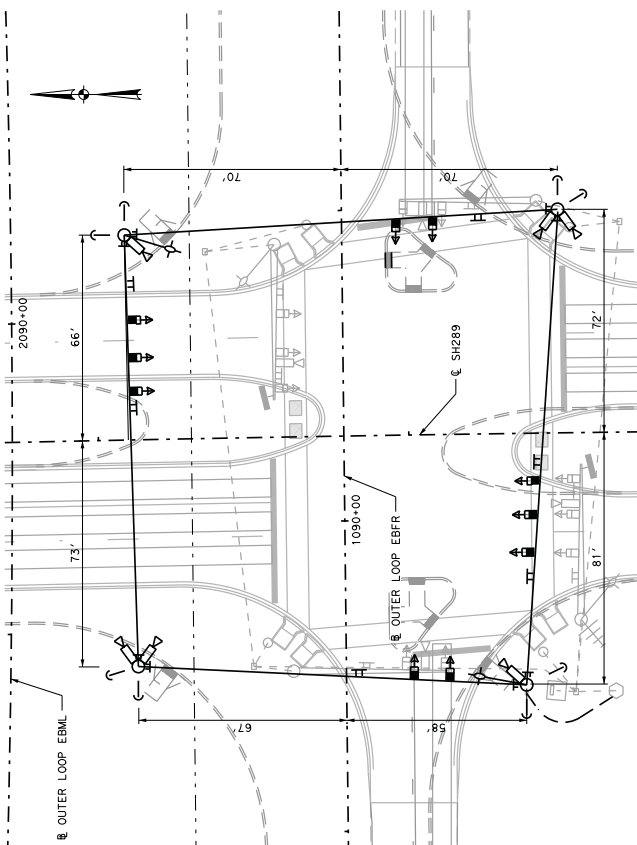
PLOT DATE:

FILENAME: COL_TWP_S1G.dgn

6/4/2019 8:05:10 AM

CONDUIT RUNS											
RUN NO.	CONDUIT TYPE (EACH)				WIRE SIZE AND TYPE (EA)						
	RUN LENGTH (LF)	TRENCH PVC			CONDUCTORS			SIGNAL CABLE			
		2"	4"	2"	4"	NO. 6 XHHW	NO. 6 BARE	NO. 8 XHHW	10 CNDR TY-A 14 AWG	**VTVDS CABLE	***** VEHICLE PREEMPTION CABLE
1	40	1				2	1				<div>4</div>
2	10		1			2	1				
3	20		1				1	2			
4	20			1					4	6	
5 (Not Used)	20										<div>4</div>
	20										
	10		1			1	1	4	2	1	
	40							2	2	2	
7	15								1	2	2
8	15								2	2	1
9	15								2	2	1
10	90								1	2	1
11	10			1			1			2	
12	40								1***		
13	15								1		
14	25								2	3	2
15	15								2	3	1
16	90								2	1	3
17	10			1			1			2	
18	90								2	1	
19	15									1	
20	15									1	
21	30									1	
22 (Not Used)	0										
23	10			1			1			1	
TOTAL	645	40	0	150	20	100	210	470	535	1110	345

* FOR CONTRACTOR'S INFORMATION ONLY. CABLE IS SUBSIDIARY TO ITEM 681.
 ** VIVOS COAXIAL CABLE INCLUDES 3-CONDUCTOR POWER CABLE
 *** ADD 45' SLACK FOR MOVING SIGNAL HEADS
 **** EMERGENCY VEHICLE PREEMPTION CABLE WILL BE PROVIDED BY CITY OF CELINA.
 ***** CONTRACTOR SHALL COORDINATE WITH KIM BRAWNER AT (972) 310-0185.



POLE LOCATION AND GROUND ANCHOR LAYOUT

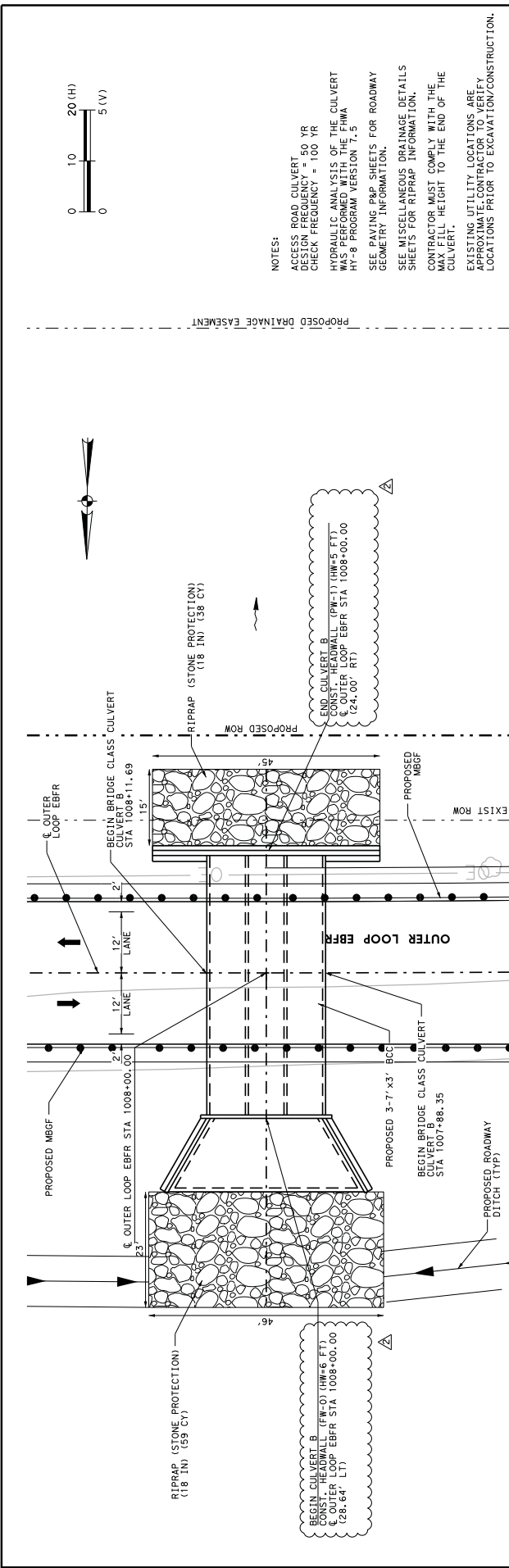
CNR. COLOR	CABLE TERMINATION CHART			
	CABLE 1 FROM SPAN TO CNTR. 10 CNDR.	CABLE 2 FROM SPAN TO CNTR. 10 CNDR.	CABLE 3 FROM SPAN TO CNTR. 10 CNDR.	CABLE 4 FROM SPAN TO CNTR. 10 CNDR.
BLACK	SPARE	SPARE	SPARE	SPARE
WHITE	S. COMMON	S. COMMON	S. COMMON	S. COMMON
RED	SH 6, 7 R	SH 4, 5 R	SH 1, 2 R	SH 9, 10 R
GREEN	SH 6, 7 G	SH 4, 5 G	SH 1, 2 G	SH 9, 10 G
ORANGE	SH 6, 7 Y	SH 4, 5 Y	SH 1, 2 Y	SH 9, 10 Y
BLUE	SH 8 G ARW	SH 5 G ARW	SH 3 G ARW	SH 10 G ARW
WHITE/BLACK	SH 8 SY ARW	SH 5 SY ARW	SH 3 SY ARW	SH 10 SY ARW
RED/BLACK	SH 8 FY ARW	SH 5 FY ARW	SH 3 FY ARW	SH 10 FY ARW
GREEN/BLACK	SH 8 R ARW	SH 5 R ARW	SH 3 R ARW	SH 10 R ARW
ORANGE/BLACK	SPARE	SPARE	SPARE	SPARE
BLUE/BLACK	SPARE	SPARE	SPARE	SPARE

POLE HEIGHTS		GROUND BOX SUMMARY	
POLE NUMBER	HEIGHT (LF)	TYPE	DESCRIPTION
T1, T2, T3, T4	40'	C	NO. 162911 W/ APRON

VINDS DETECTION DETAILS			
CAMERA/R ADAR	MOUNTING LOCATION	MOUNTING HEIGHT	ZONE
C1	T2	32'	STOPBAR Ø4-A
C2	T3	32'	STOPBAR Ø6-A
C3	T1	32'	STOPBAR Ø1-B
C4	T4	32'	STOPBAR Ø5-A
C5	T1	32'	STOPBAR Ø2-A
C6	T3	32'	STOPBAR Ø8-A

SIGNAL LAYOUT
 PRESTON RD (SH 289)
 TEMPORARY SIGNAL SUMMARY

COLLIN COUNTY OUTER LOOP



NOTES:

ACCESS ROAD CULVERT DESIGN FREQUENCY = 50 YR CHECK FREQUENCY = 100 YR

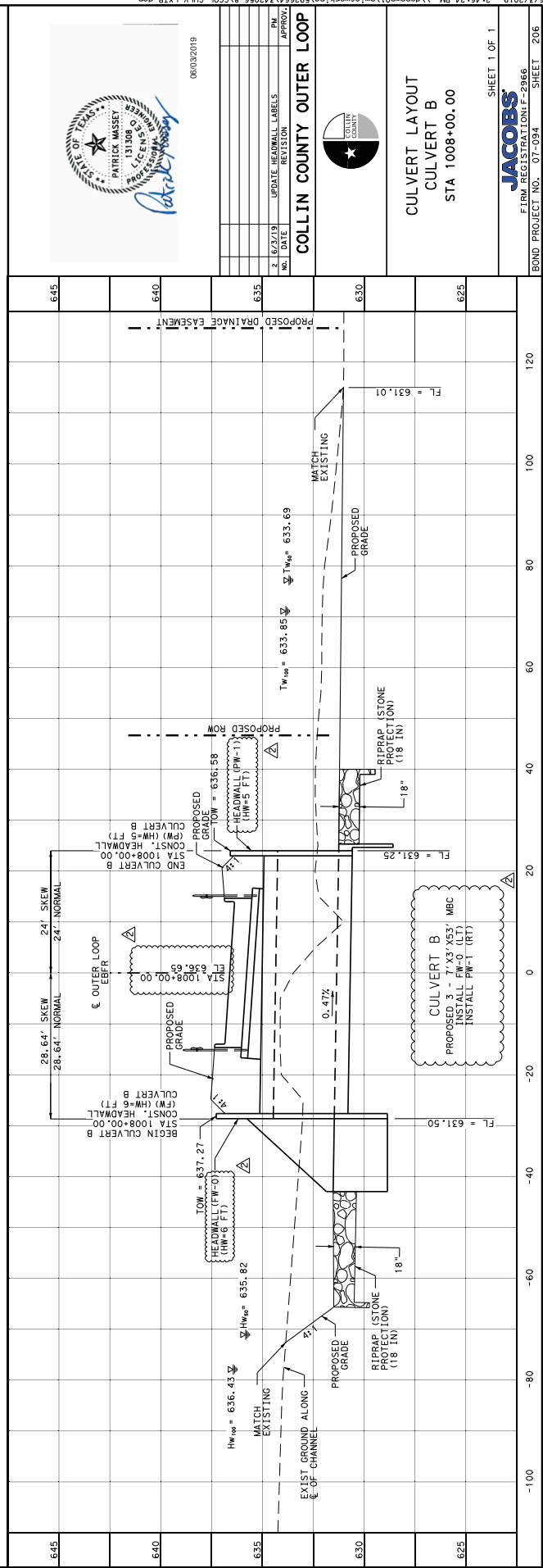
HYDRAULIC ANALYSIS OF THE CULVERT WAS PERFORMED WITH THE FHWA HI-8 PROGRAM VERSION 7.5

SEE PAVING P&P SHEETS FOR ROADWAY GEOMETRY INFORMATION.

SEE MISCELLANEOUS DRAINAGE DETAILS SHEETS FOR RIPRAP INFORMATION.

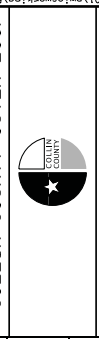
CONTRACTOR MUST COMPLY WITH THE MAX FILL HEIGHT TO THE END OF THE CULVERT.

EXISTING UTILITY LOCATIONS ARE APPROXIMATE. CONTRACTOR TO VERIFY LOCATIONS PRIOR TO EXCAVATION/CONSTRUCTION.



06/09/2019

NO.	DATE	REVISION	UPDATE HEADWALL LABELS	PN	APPROVAL
2	6/2/19				



COLLIN COUNTY OUTER LOOP

CULVERT LAYOUT

CULVERT B

STA 1008+00.00

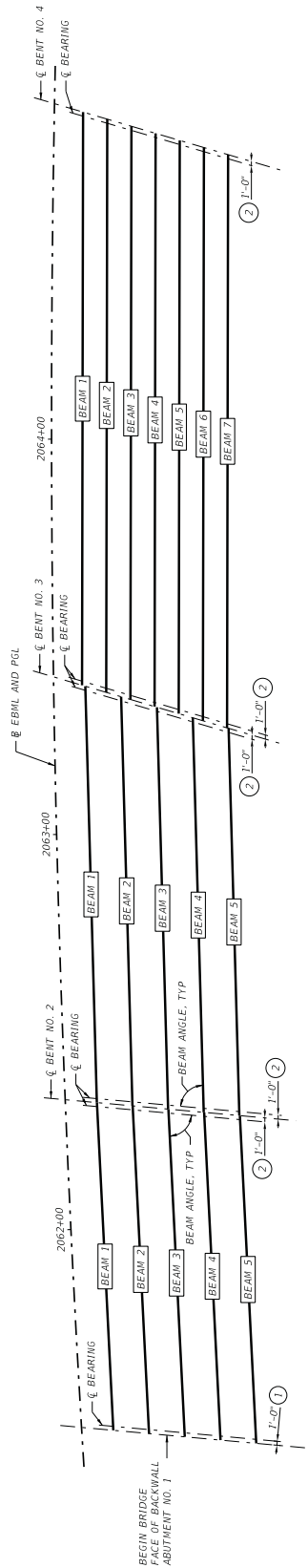
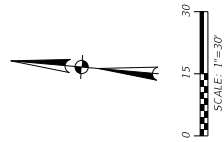
SHEET 1 OF 1

JACOBS

FIRM REGISTRATION F-2966

BOND PROJECT NO. 07-094

SHEET 206



- ① MEASURED PERPENDICULAR TO C ABUTMENT
- ② MEASURED PARALLEL TO BEAM

② MEASURED PARALLEL TO BEAM

BENT REPORT

[illegible]

BENT NO. 2 (5 0.12 0.86 W)				BENT NO. 3 (5 0.11 20.27 30.3 W)				BENT NO. 4 (5 0.11 20.27 30.3 W)			
DISTANCE BETWEEN STATION LINE AND BEAM I				DISTANCE BETWEEN STATION LINE AND BEAM I				DISTANCE BETWEEN STATION LINE AND BEAM I			
BEAM SPAC.		BEAM ANGLE		BEAM SPAC.		BEAM ANGLE		BEAM SPAC.		BEAM ANGLE	
(C.L. BENT)	D	M	S	(C.L. BENT)	D	M	S	(C.L. BENT)	D	M	S
SPAN	1	10	40	SPAN	1	10	40	SPAN	1	10	40
GLIDER	2	9.063	83	GLIDER	3	6.379	73	GLIDER	3	6.379	73
GLIDER	3	9.063	83	GLIDER	2	6.379	73	GLIDER	2	6.379	73
GLIDER	4	9.063	83	GLIDER	4	6.379	73	GLIDER	4	6.379	73
GLIDER	5	9.063	83	GLIDER	5	6.379	73	GLIDER	5	6.379	73
TOTAL		36.252		TOTAL		36.252		TOTAL		36.252	
				GLIDER	7	38.274		GLIDER	7	38.274	
				TOTAL		38.274		TOTAL		38.274	

BENT NO. 3 [5 11 20 27: 30 W]												DISTANCE BETWEEN STATION LINE AND BEAM 1												7: 55 R											
BEAM SPAC.												BEAM ANGLE																							
[C. L. BENT.]												[C. L. BENT.]																							
D												H																							
S												S																							
SPAN		3		GIDER		1		6 379		73		45		48																					
				GIDER		2		6 379		73		45		48																					
				GIDER		3		6 379		73		45		48																					
				GIDER		4		6 379		73		45		48																					
				GIDER		5		6 379		73		45		48																					
				GIDER		6		6 379		73		45		48																					
				GIDER		7		6 379		73		45		48																					
				TOTAL				38 274																											

BENT NO. 2 (5 0.12 0.86 W)				BENT NO. 3 (5 0.11 20.27 30.3 W)				BENT NO. 4 (5 0.11 20.27 30.3 W)			
DISTANCE BETWEEN STATION LINE AND BEAM I				DISTANCE BETWEEN STATION LINE AND BEAM I				DISTANCE BETWEEN STATION LINE AND BEAM I			
BEAM SPAC.		BEAM ANGLE		BEAM SPAC.		BEAM ANGLE		BEAM SPAC.		BEAM ANGLE	
(C.L. BENT)	D	M	S	(C.L. BENT)	D	M	S	(C.L. BENT)	D	M	S
SPAN	1	10	40	SPAN	1	10	40	SPAN	1	10	40
GLIDER	2	9.063	83	GLIDER	3	6.379	73	GLIDER	3	6.379	73
GLIDER	3	9.063	83	GLIDER	2	6.379	73	GLIDER	2	6.379	73
GLIDER	4	9.063	83	GLIDER	4	6.379	73	GLIDER	4	6.379	73
GLIDER	5	9.063	83	GLIDER	5	6.379	73	GLIDER	5	6.379	73
TOTAL		36.252		TOTAL		36.252		TOTAL		36.252	
				GLIDER	7	38.274		GLIDER	7	38.274	
				TOTAL		38.274		TOTAL		38.274	

GIRDER REPORT

GIRDER	HORIZONTAL DISTANCE		SPAN 1
	C-C BENT	C-C BRG.	
GIRDER 1	82.999	80.989	80.989
GIRDER 2	82.999	80.989	80.989
GIRDER 3	82.999	80.989	80.989
GIRDER 4	82.999	80.989	80.989
GIRDER 5	82.999	80.989	80.989

TRUE DISTANCE		GDR, SLOPE
BOT.	GDR, FLG.	
82.50		0.0182
82.50		0.0182
82.50		0.0182
82.50		0.0183
82.50		0.0183

	C-C BENT	HORIZONTAL DISTANCE	SPAW 2
GIRDER 1	105.361	103.361	
GIRDER 2	103.521	101.521	
GIRDER 3	101.680	99.680	
GIRDER 4	99.840	97.840	
GIRDER 5	97.999	95.999	

TRUE DISTANCE	GDR, SLOPE
BOT, GDR, FLG.	0.0143
104.86	0.0144
103.02	0.0145
101.18	0.0145
99.34	0.0146
97.50	

		SPAN 3	
		C-C BENT	C-C BENT
		HORIZONTAL DISTANCE	
GIRDER 1	1	144.993	142.993
GIRDER 2	2	144.993	142.993
GIRDER 3	3	144.993	142.993
GIRDER 4	4	144.993	142.993
GIRDER 5	5	144.993	142.993
GIRDER 6	6	144.993	142.993
GIRDER 7	7	144.993	142.993

TRUE DISTANCE		GOR, SLOPE
BOT.	GOR, FLG.	
144.49	144.49	0.0093
144.49	144.49	0.0093
144.49	144.49	0.0094
144.49	144.49	0.0095
144.49	144.49	0.0095
144.49	144.49	0.0096

--	--

[illegible]

EBML BRIDGE
BNSF OVERPASS
BEAM LAYOUT - UNIT 1

BNSF OVERPASS

BEAM LAYOUT - UNIT 1

SHEET 1 OF 1

JACOBS

FIRM REGISTRATION: F-2966

FIRM REGISTRATION: F-2966

FIRM REGISTRATION: F-2966

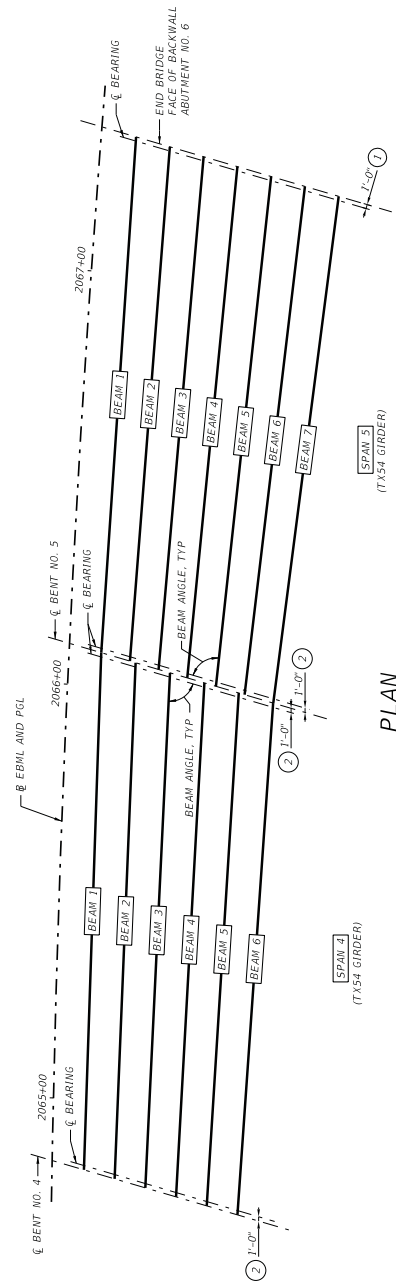
101101

© 2000 A.T.V.

ETI EMAIL: ETI@ETI.COM | 800.654.0 800.654.0

DATE: 08/01/01

DATE:	DD	MM	YY
DIGIT TIME:	HH	MM	SS



- ① MEASURED PERPENDICULAR TO ζ ABUTMENT
- ② MEASURED PARALLEL TO BEAM



06/04/2019

[illegible]

EBML BRIDGE
BNSF OVERPASS
BEAM LAYOUT - UNIT 2

SHEET 1 OF 1

JACOBS
FIRM REGISTRATION: F-2966

FIRM REGISTRATION: F-2966

EFFECT NO.	07-094	SHEET	289A
------------	--------	-------	------

[illegible]

ETI ENAME:COMI:18256145 RDD200M00

CONCLUSION

1811

BENT REPORT

[illegible]

GIRDER REPORT

	SPIN - 1			TRUE DISTANCE			SPIN - 2			TRUE DISTANCE			
	GIDER	HORIZONTAL DISTANCE	C-C B'ING	BOT GOR FLG.	GOR SLOPE	GIDER	HORIZONTAL DISTANCE	C-C B'ING	BOT GOR FLG.	GOR SLOPE	GIDER	HORIZONTAL DISTANCE	C-C B'ING
GIDER 1	124.966	124.50	0.0038	124.50	122.84	GIDER 1	124.865	122.840	124.36	122.84	GIDER 1	124.865	122.840
GIDER 2	124.966	124.50	0.0038	124.50	122.84	GIDER 2	124.865	122.840	124.36	122.84	GIDER 2	124.865	122.840
GIDER 3	124.966	124.50	0.0038	124.50	122.84	GIDER 3	124.865	122.840	124.36	122.84	GIDER 3	124.865	122.840
GIDER 4	124.966	124.50	0.0038	124.50	122.84	GIDER 4	124.865	122.840	124.36	122.84	GIDER 4	124.865	122.840
GIDER 5	124.966	124.50	0.0038	124.50	122.84	GIDER 5	124.865	122.840	124.36	122.84	GIDER 5	124.865	122.840
GIDER 6	124.966	124.50	0.0038	124.50	122.84	GIDER 6	124.865	122.840	124.36	122.84	GIDER 6	124.865	122.840
GIDER 7	124.966	124.50	0.0038	124.50	122.84	GIDER 7	124.865	122.840	124.36	122.84	GIDER 7	124.865	122.840
GIDER 8	124.966	124.50	0.0038	124.50	122.84	GIDER 8	124.865	122.840	124.36	122.84	GIDER 8	124.865	122.840
GIDER 9	124.966	124.50	0.0038	124.50	122.84	GIDER 9	124.865	122.840	124.36	122.84	GIDER 9	124.865	122.840
GIDER 10	124.966	124.50	0.0038	124.50	122.84	GIDER 10	124.865	122.840	124.36	122.84	GIDER 10	124.865	122.840
GIDER 11	124.966	124.50	0.0038	124.50	122.84	GIDER 11	124.865	122.840	124.36	122.84	GIDER 11	124.865	122.840
GIDER 12	124.966	124.50	0.0038	124.50	122.84	GIDER 12	124.865	122.840	124.36	122.84	GIDER 12	124.865	122.840
GIDER 13	124.966	124.50	0.0038	124.50	122.84	GIDER 13	124.865	122.840	124.36	122.84	GIDER 13	124.865	122.840
GIDER 14	124.966	124.50	0.0038	124.50	122.84	GIDER 14	124.865	122.840	124.36	122.84	GIDER 14	124.865	122.840
GIDER 15	124.966	124.50	0.0038	124.50	122.84	GIDER 15	124.865	122.840	124.36	122.84	GIDER 15	124.865	122.840
GIDER 16	124.966	124.50	0.0038	124.50	122.84	GIDER 16	124.865	122.840	124.36	122.84	GIDER 16	124.865	122.840
GIDER 17	124.966	124.50	0.0038	124.50	122.84	GIDER 17	124.865	122.840	124.36	122.84	GIDER 17	124.865	122.840
GIDER 18	124.966	124.50	0.0038	124.50	122.84	GIDER 18	124.865	122.840	124.36	122.84	GIDER 18	124.865	122.840
GIDER 19	124.966	124.50	0.0038	124.50	122.84	GIDER 19	124.865	122.840	124.36	122.84	GIDER 19	124.865	122.840
GIDER 20	124.966	124.50	0.0038	124.50	122.84	GIDER 20	124.865	122.840	124.36	122.84	GIDER 20	124.865	122.840
GIDER 21	124.966	124.50	0.0038	124.50	122.84	GIDER 21	124.865	122.840	124.36	122.84	GIDER 21	124.865	122.840
GIDER 22	124.966	124.50	0.0038	124.50	122.84	GIDER 22	124.865	122.840	124.36	122.84	GIDER 22	124.865	122.840
GIDER 23	124.966	124.50	0.0038	124.50	122.84	GIDER 23	124.865	122.840	124.36	122.84	GIDER 23	124.865	122.840
GIDER 24	124.966	124.50	0.0038	124.50	122.84	GIDER 24	124.865	122.840	124.36	122.84	GIDER 24	124.865	122.840
GIDER 25	124.966	124.50	0.0038	124.50	122.84	GIDER 25	124.865	122.840	124.36	122.84	GIDER 25	124.865	122.840
GIDER 26	124.966	124.50	0.0038	124.50	122.84	GIDER 26	124.865	122.840	124.36	122.84	GIDER 26	124.865	122.840
GIDER 27	124.966	124.50	0.0038	124.50	122.84	GIDER 27	124.865	122.840	124.36	122.84	GIDER 27	124.865	122.840
GIDER 28	124.966	124.50	0.0038	124.50	122.84	GIDER 28	124.865	122.840	124.36	122.84	GIDER 28	124.865	122.840
GIDER 29	124.966	124.50	0.0038	124.50	122.84	GIDER 29	124.865	122.840	124.36	122.84	GIDER 29	124.865	122.840
GIDER 30	124.966	124.50	0.0038	124.50	122.84	GIDER 30	124.865	122.840	124.36	122.84	GIDER 30	124.865	122.840
GIDER 31	124.966	124.50	0.0038	124.50	122.84	GIDER 31	124.865	122.840	124.36	122.84	GIDER 31	124.865	122.840
GIDER 32	124.966	124.50	0.0038	124.50	122.84	GIDER 32	124.865	122.840	124.36	122.84	GIDER 32	124.865	122.840
GIDER 33	124.966	124.50	0.0038	124.50	122.84	GIDER 33	124.865	122.840	124.36	122.84	GIDER 33	124.865	122.840
GIDER 34	124.966	124.50	0.0038	124.50	122.84	GIDER 34	124.865	122.840	124.36	122.84	GIDER 34	124.865	122.840
GIDER 35	124.966	124.50	0.0038	124.50	122.84	GIDER 35	124.865	122.840	124.36	122.84	GIDER 35	124.865	122.840
GIDER 36	124.966	124.50	0.0038	124.50	122.84	GIDER 36	124.865	122.840	124.36	122.84	GIDER 36	124.865	122.840
GIDER 37	124.966	124.50	0.0038	124.50	122.84	GIDER 37	124.865	122.840	124.36	122.84	GIDER 37	124.865	122.840
GIDER 38	124.966	124.50	0.0038	124.50	122.84	GIDER 38	124.865	122.840	124.36	122.84	GIDER 38	124.865	122.840
GIDER 39	124.966	124.50	0.0038	124.50	122.84	GIDER 39	124.865	122.840	124.36	122.84	GIDER 39	124.865	122.840
GIDER 40	124.966	124.50	0.0038	124.50	122.84	GIDER 40	124.865	122.840	124.36	122.84	GIDER 40	124.865	122.840
GIDER 41	124.966	124.50	0.0038	124.50	122.84	GIDER 41	124.865	122.840	124.36	122.84	GIDER 41	124.865	122.840
GIDER 42	124.966	124.50	0.0038	124.50	122.84	GIDER 42	124.865	122.840	124.36	122.84	GIDER 42	124.865	122.840
GIDER 43	124.966	124.50	0.0038	124.50	122.84	GIDER 43	124.865	122.840	124.36	122.84	GIDER 43	124.865	122.840
GIDER 44	124.966	124.50	0.0038	124.50	122.84	GIDER 44	124.865	122.840	124.36	122.84	GIDER 44	124.865	122.840
GIDER 45	124.966	124.50	0.0038	124.50	122.84	GIDER 45	124.865	122.840	124.36	122.84	GIDER 45	124.865	122.840
GIDER 46	124.966	124.50	0.0038	124.50	122.84	GIDER 46	124.865	122.840	124.36	122.84	GIDER 46	124.865	122.840
GIDER 47	124.966	124.50	0.0038	124.50	122.84	GIDER 47	124.865	122.840	124.36	122.84	GIDER 47	124.865	122.840
GIDER 48	124.966	124.50	0.0038	124.50	122.84	GIDER 48	124.865	122.840	124.36	122.84	GIDER 48	124.865	122.840
GIDER 49	124.966	124.50	0.0038	124.50	122.84	GIDER 49	124.865	122.840	124.36	122.84	GIDER 49	124.865	122.840
GIDER 50	124.966	124.50	0.0038	124.50	122.84	GIDER 50	124.865	122.840	124.36	122.84	GIDER 50	124.865	122.840
GIDER 51	124.966	124.50	0.0038	124.50	122.84	GIDER 51	124.865	122.840	124.36	122.84	GIDER 51	124.865	122.840
GIDER 52	124.966	124.50	0.0038	124.50	122.84	GIDER 52	124.865	122.840	124.36	122.84	GIDER 52	124.865	122.840
GIDER 53	124.966	124.50	0.0038	124.50	122.84	GIDER 53	124.865	122.840	124.36	122.84	GIDER 53	124.865	122.840
GIDER 54	124.966	124.50	0.0038	124.50	122.84	GIDER 54	124.865	122.840	124.36	122.84	GIDER 54	124.865	122.840
GIDER 55	124.966	124.50	0.0038	124.50	122.84	GIDER 55	124.865	122.840	124.36	122.84	GIDER 55	124.865	122.840
GIDER 56	124.966	124.50	0.0038	124.50	122.84	GIDER 56	124.865	122.840	124.36	122.84	GIDER 56	124.865	122.840
GIDER 57	124.966	124.50	0.0038	124.50	122.84	GIDER 57	124.865	122.840	124.36	122.84	GIDER 57	124.865	122.840
GIDER 58	124.966	124.50	0.0038	124.50	122.84	GIDER 58	124.865	122.840	124.36	122.84	GIDER 58	124.865	122.840
GIDER 59	124.966	124.50	0.0038	124.50	122.84	GIDER 59	124.865	122.840	124.36	122.84	GIDER 59	124.865	122.840
GIDER 60	124.966	124.50	0.0038	124.50	122.84	GIDER 60	124.865	122.840	124.36	122.84	GIDER 60	124.865	122.840
GIDER 61	124.966	124.50	0.0038	124.50	122.84	GIDER 61	124.865	122.840	124.36	122.84	GIDER 61	124.865	122.840
GIDER 62	124.966	124.50	0.0038	124.50	122.84	GIDER 62	124.865	122.840	124.36	122.84	GIDER 62	124.865	122.840
GIDER 63	124.966	124.50	0.0038	124.50	122.84	GIDER 63	124.865	122.840	124.36	122.84	GIDER 63	124.865	122.840
GIDER 64	124.966	124.50	0.0038	124.50	122.84	GIDER 64	124.865	122.840	124.36	122.84	GIDER 64	124.865	122.840
GIDER 65	124.966	124.50	0.0038	124.50	122.84	GIDER 65	124.865	122.840	124.36	122.84	GIDER 65	124.865	122.840
GIDER 66	124.966	124.50	0.0038	124.50	122.84	GIDER 66	124.865	122.840	124.36	122.84	GIDER 66	124.865	122.840
GIDER 67	124.966	124.50	0.0038	124.50	122.84	GIDER 67	124.865	122.840	124.36	122.84	GIDER 67	124.865	122.840
GIDER 68	124.966	124.50	0.0038	124.50	122.84	GIDER 68	124.865	122.840	124.36	122.84	GIDER 68	124.865	122.840
GIDER 69	124.966	124.50	0.0038	124.50	122.84	GIDER 69	124.865	122.840	124.36	122.84	GIDER 69	124.865	122.840
GIDER 70	124.966	124.50	0.0038	124.50	122.84	GIDER 70	124.865	122.840	124.36	122.84	GIDER 70	124.865	122.840
GIDER 71	124.966	124.50	0.0038	124.50	122.84	GIDER 71	124.865	122.840	124.36	122.84	GIDER 71	124.865	122.840
GIDER 72	124.966	124.50	0.0038	124.50	122.84	GIDER 72	124.865	122.840	124.36	122.84	GIDER 72	124.865	122.840
GIDER 73	124.966	124.50	0.0038	124.50	122.84	GIDER 73	124.865	122.840	124.36	122.84	GIDER 73	124.865	122.840
GIDER 74	124.966	124.50	0.0038	124.50	122.84	GIDER 74	124.865	122.840	124.36	122.84	GIDER 74	124.865	122.840
GIDER 75	124.966	124.50	0.0038	124.50	122.84	GIDER 75	124.865	122.840	124.36	122.84	GIDER 75	124.865	122.840
GIDER 76	124.966	124.50	0.0038	124.50	122.84	GIDER 76	124.865	122.840	124.36	122.84	GIDER 76	124.865	122.840
GIDER 77	124.966	124.50	0.0038	124.50	122.84	GIDER 77	124.865	122.840	124.36	122.84	GIDER 77	124.865	122.840
GIDER 78	124.966	124.50	0.0038	124.50	122.84	GIDER 78	124.865	122.840	124.36	122.84	GIDER 78	124.865	122.8

2966

FIRM REGISTRATION: F-2966

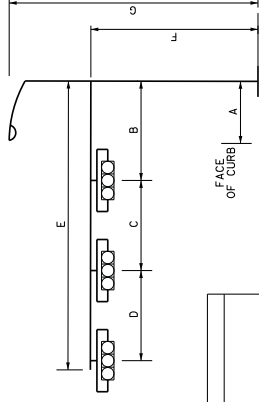
EFFECT NO.	07-094	SHEET	289A
------------	--------	-------	------

PLOT DATE:	8-6-79
PLOT TIME:	8:01 AM

ETI ENAME:COMI:18256145 RDD200M00

CONCLUSION

1811

[illegible]

06/04/2019

CAMERA/ RADAR	RADAR DETECTION DETAILS			
	APPROACH	ZONE LOCATION	ZONE	
R1	NB SH 289 PRESENCE AND ADVANCE	FIRST SETBACK	PHASE 2	
			445' FROM STOP BAR	
		SECOND SETBACK	PHASE 2	
			325' FROM STOP BAR	
		STOPBAR	ø5-A	
R2	SB SH 289 PRESENCE AND ADVANCE	FIRST SETBACK	PHASE 6	
			445' FROM STOP BAR	
		SECOND SETBACK	PHASE 6	
			325' FROM STOP BAR	
		STOPBAR	ø1-A	
R3	EB OUTER LOOP EBFR	FIRST SETBACK	PHASE 4	
			405' FROM STOP BAR	
		SECOND SETBACK	PHASE 4	
			300' FROM STOP BAR	
		STOPBAR	ø1-A	
R4	WB OUTER LOOP EBFR	FIRST SETBACK	PHASE 8	
			405' FROM STOP BAR	
		SECOND SETBACK	PHASE 8	
			300' FROM STOP BAR	
		STOPBAR	ø3-A	
			ø8-A	

CNDR. COLOR	CABLE 1 FROM E-#1 TO CNTRL. 16 CNDR.	(NOT USED)	CABLE 3 FROM E-#3 TO CNTRL. 16 CNDR.	CABLE TERMINATION CHART				CABLE 6 FROM E-#6 TO CNTRL. 10 CNDR.	*CABLE 7 FROM E-#7 TO CNTRL. 16 CNDR.	CABLE 2 FROM E-#2 TO CNTRL. 10 CNDR.
BLACK	S.PARE		S.PARE	S.PARE	S.PARE	S.PARE	S.PARE	S.PARE	S.PARE	S.PARE
WHITE	S.PARE		S. COMMON	S. COMMON	S. COMMON	S. COMMON	S. COMMON	S. COMMON	S. COMMON	S.PARE
RED	SH 2, 19 R		SH 6, 7 R	S.PARE	SH 11, 20 R	S.PARE	SH 15, 16 R	S.PARE	SH 15, 16 R	S.PARE
GREEN	SH 2, 19 G		SH 6, 7 G	SH 9 D	SH 11, 20 G	SH 13 W	SH 15, 16 G	SH 13 W	SH 15, 16 G	SH 18 W
ORANGE	SH 2, 19 Y		SH 6, 7 Y	SH 9 W	SH 11, 20 Y	SH 13 DW	SH 15, 16 Y	SH 13 DW	SH 15, 16 Y	SH 18 DW
BLUE	SH 1 T G ARW		SH 5 G ARW	S.PARE	SH 10 G ARW	S.PARE	SH 14 G ARW	S.PARE	SH 14 G ARW	SH 17 W
WHITE/BLACK	SH 1 FY ARW		SH 5 FY ARW	S.PARE	SH 10 FY ARW	SH 12 W	SH 14 FY ARW	SH 12 W	SH 14 FY ARW	SH 17 W
RED/BLACK	SH 1 SY ARW		SH 5 SY ARW	S.PARE	SH 10 SY ARW	SH 12 DW	SH 14 SY ARW	SH 12 DW	SH 14 SY ARW	SH 17 DW
GREEN/BLACK	SH 1 R ARW		SH 5 R ARW	S.PARE	SH 10 R ARW	SH 14 R ARW	SH 14 R ARW	SH 14 R ARW	SH 14 R ARW	SH 17 DW
ORANGE/BLACK	SH 1 R ARW		S.PARE	S.PARE	S.PARE	S.PARE	S.PARE	S.PARE	S.PARE	S.PARE
BLUE/BLACK	SH 3 W		S.PARE	S.PARE	S.PARE	S.PARE	S.PARE	S.PARE	S.PARE	S.PARE
BLACK/WHITE	SH 3 DW		S.PARE	S.PARE	S.PARE	S.PARE	S.PARE	S.PARE	S.PARE	S.PARE
GREEN/WHITE	S.PARE		S.PARE	S.PARE	S.PARE	S.PARE	S.PARE	S.PARE	S.PARE	S.PARE
BLUE/WHITE	S.PARE		S.PARE	S.PARE	S.PARE	S.PARE	S.PARE	S.PARE	S.PARE	S.PARE
BLACK/PFD	S.PARE		S.PARE	S.PARE	S.PARE	S.PARE	S.PARE	S.PARE	S.PARE	S.PARE

SIGNAL LAYOUT
PRESTON RD (SH 289)
PROPOSED SIGNAL SUMMARY



JACOBS
SHS

HEET 3 OF 5

FIRM REGISTRATION: F-2966
JECT NO. 07-094 SHEE



Collin County Purchasing

2019-109 Addendum 3

Construction, Road: Collin County Outer Loop Access Road from Dallas Parkway to East of SH 289

Issue Date: 5/8/2019

Questions Deadline: 6/6/2019 05:00 PM (CT)

Response Deadline: 6/13/2019 02:00 PM (CT)

Collin County Purchasing

Contact Information

Contact: Matt Dobecka, CPPO, CPPB, CPCP Functional Analyst

Address: 2300 Bloomdale Rd.

Ste. 3160

Purchasing

Admin. Building

Ste.3160

McKinney, TX 75071

Phone: 1 (972) 548-4103

Fax: 1 (972) 548-4694

Email: mdobecka@co.collin.tx.us

Event Information

Number: 2019-109 Addendum 3
Title: Construction, Road: Collin County Outer Loop Access Road from Dallas Parkway to East of SH 289
Type: Invitation for Bid - Construction
Issue Date: 5/8/2019
Question Deadline: 6/6/2019 05:00 PM (CT)
Response Deadline: 6/13/2019 02:00 PM (CT)

Ship To Information

Address: 4690 Community Ave.
Ste. 200
Engineering
JJAEP
Ste. 200
McKinney, TX 75071

Billing Information

Address: 2300 Bloomdale Rd.
Ste. 3100
Auditor
Admin. Building
Ste. 3100
McKinney, TX 75071

Bid Activities

Mandatory Pre-Bid Meeting

5/22/2019 9:00:00 AM (CT)

A MANDATORY PRE-BID CONFERENCE will be held by Collin County in the Commissioners' Courtroom located at the Collin County Administration Building, 2300 Bloomdale Road, 4th Floor, McKinney, TX 75071 in order for bidders to ask questions regarding the proposed work. All bidders desiring to bid the work should have a representative at the pre-bid conference; bidders that do not attend the pre-bid conference shall not be considered in the evaluation for award of a contract per Texas Local Government Code 262.0256. Attendance shall be mandatory at the pre-bid conference.

Bid Attachments

Addendum No. 1.pdf

Addendum No. 1

[View Online](#)

Addendum No. 2.pdf

Addendum No. 2

[View Online](#)

Addendum No. 3.pdf

Addendum No. 3

[View Online](#)

CCOL_BIDTABS (ADDENDUM 2).zip

CCOL Bid Tabs (Unzip file)

[View Online](#)

Collin County Outer Loop Access Specs_REV_2019-04-29.pdf

Spec Book

[Download](#)

Collin County Outer Loop Access Road Plans_2019-04-26.pdf

Plans

[Download](#)

Collin County Outer Loop Access Road Cross Sections_2019-04-26.pdf

Cross Sections

[Download](#)

Requested Attachments

Bid Bond

(Attachment required)

If submitting online please upload your bid bond.

Bid Form

(Attachment required)

Bid Schedule

(Attachment required)

W-9

(Attachment required)

Audited Financial Statements

Bid Attributes

1 eBid Notice

Collin County exclusively uses IonWave Technologies, Inc. (Collin County eBid) for the notification and dissemination of all solicitations. The receipt of solicitations through any other means may result in your receipt of incomplete specifications and/or addendums which could ultimately render your bid/proposal non-compliant. Collin County accepts no responsibility for the receipt and/or notification of solicitations through any other means. Please initial.

(Required: Maximum 1000 characters allowed)

2 Bid Bond Acknowledgement

I understand that accompanying this bid, is a certified check, cashier's check or Bid Bond in the amount of five percent (5%) of the total amount bid. Bidders submitting a bid via Collin County eBid shall upload a Bid Bond at <https://collincountytx.ionwave.net>. Regardless of delivery method, all Bid Bonds shall be received prior to the bid opening time to be considered.

I understand that the original Bid Bond shall be received in the Collin County Purchasing Department no later than close of business on the third working day after the bid opening. **Late receipt of original Bid Bond shall be cause for rejection of bid.** Please initial.

(Required: Maximum 4000 characters allowed)

3 Bonding Requirement Acknowledgement

I understand that the bonding requirements of this solicitation are required and are included in the submitted pricing. A bond certificate (payment, performance, and/or maintenance) as stated in the specification document shall be submitted to the Purchasing department if I am awarded all or a portion of the resulting contract. Please initial.

(Required: Maximum 1000 characters allowed)

4 Contact Information

List the contact name, email address and phone number of the main person(s) Collin County should contact in reference to this solicitation. Contact(s) shall be duly authorized by the company, corporation, firm, partnership or individual to respond to any questions, clarification, and or offers in response to this solicitation.

(Required: Maximum 4000 characters allowed)

5 Exceptions

Do you take exceptions to the specifications. If so, by separate attachment, please state your exceptions.

☐ Yes ☐ No

(Required: Check only one)

6 Attribute deleted as part of an Addendum**7 Insurance Acknowledgement – Construction**

I understand that the insurance requirements of this solicitation are required and are included in the submitted pricing. The Contractor shall furnish certificates of insurance for both the Contractor and any subcontractor to the Purchasing department if awarded all or a portion of the resulting contract. Please initial.

(Required: Maximum 1000 characters allowed)

8 Preferential Treatment

The County of Collin, as a governmental agency of the State of Texas, may not award a contract to a nonresident bidder unless the nonresident's bid is lower than the lowest bid submitted by a responsible Texas resident bidder by the same amount that a Texas resident bidder would be required to underbid a nonresident bidder to obtain a comparable contract in the state in which the nonresident's principal place of business is located (Government Code, Title 10, V.T.C.A., Chapter 2252, Subchapter A). 1. Is your principal place of business in the State of Texas? 2. If your principal place of business is not in Texas, in which State is your principal place of business? 3. If your principal place of business is not in Texas, does your state favor resident bidders (bidders in your state) by some dollar increment or percentage? 4. If your state favors resident bidders, state by what dollar amount or percentage.

(Required: Maximum 4000 characters allowed)

9 Debarment Certification

I certify that neither my company nor an owner or principal of my company has been debarred, suspended or otherwise made ineligible for participation in Federal Assistance programs under Executive Order 12549, "Debarment and Suspension," as described in the Federal Register and Rules and Regulations. Please initial.

(Required: Maximum 1000 characters allowed)

10 Immigration and Reform Act

I declare and affirm that my company is in compliance with the Immigration and Reform Act of 1986 and all employees are legally eligible to work in the United States of America. I further understand and acknowledge that any non-compliance with the Immigration and Reform Act of 1986 at any time during the term of this contract will render the contract voidable by Collin County. Please initial.

(Required: Maximum 1000 characters allowed)

11 Disclosure of Certain Relationships

Chapter 176 of the Texas Local Government Code requires that any vendor considering doing business with a local government entity disclose the vendor's affiliation or business relationship that might cause a conflict of interest with a local government entity. Subchapter 6 of the code requires a vendor to file a conflict of interest questionnaire (CIQ) if a conflict exists. By law this questionnaire must be filed with the records administrator of Collin County no later than the 7th business day after the date the vendor becomes aware of an event that requires the statement to be filed. A vendor commits an offense if the vendor knowingly violates the code. An offense under this section is a misdemeanor. By submitting a response to this request, the vendor represents that it is in compliance with the requirements of Chapter 176 of the Texas Local Government Code. Please send completed forms to the Collin County County Clerk's Office located at 2300 Bloomdale Rd., Suite 2104, McKinney, TX 75071. Please initial.

(Required: Maximum 1000 characters allowed)

12 Anti-Collusion Statement

Bidder certifies that its Bid/Proposal is made without prior understanding, agreement, or connection with any corporation, firm, or person submitting a Bid/Proposal for the same materials, services, supplies, or equipment and is in all respects fair and without collusion or fraud. No premiums, rebates or gratuities permitted; either with, prior to, or after any delivery of material or provision of services. Any such violation may result in Agreement cancellation, return of materials or discontinuation of services and the possible removal from bidders list. Please initial.

(Required: Maximum 1000 characters allowed)

**1
3 Disclosure of Interested Parties**

Section 2252.908 of the Texas Government Code requires a business entity entering into certain contracts with a governmental entity to file with the governmental entity a disclosure of interested parties at the time the business entity submits the signed contract to the governmental entity. Section 2252.908 requires the disclosure form (Form 1295) to be signed by the authorized agent of the contracting business entity, acknowledging that the disclosure is made under oath and under penalty of perjury. Section 2252.908 applies only to a contract that requires an action or vote by the governing body of the governmental entity before the contract may be signed or has a value of at least \$1 million. Section 2252.908 provides definitions of certain terms occurring in the section. Section 2252.908 applies only to a contract entered into on or after January 1, 2016. Please initial.

(Required: Maximum 1000 characters allowed)

**1
4 Notification Survey**

In order to better serve our offerors, the Collin County Purchasing Department is conducting the following survey. We appreciate your time and effort expended to submit your bid. Should you have any questions or require more information please call (972) 548-4165. How did you receive notice of this request?

☐ Plano Star Courier ☐ Plan Room ☐ Collin County eBid Notification ☐ Collin County Website
☐ Other

(Required: Check only one)

**1
5 Addendum No. 1**

Please initial to verify your receipt of the addendum.

(Required: Maximum 1000 characters allowed)

**1
6 Addendum No. 2**

Please initial to verify your receipt of the addendum.

(Required: Maximum 1000 characters allowed)

**1
7 Addendum No. 3**

Please initial to verify your receipt of the addendum.

(Required: Maximum 1000 characters allowed)

1
8**Construction Acknowledgement**

Bidder, declares that the only person or parties interested in this bid are those principals named herein, that his/her bid is made without collusion with any other person, firm or corporation, that he/she has carefully examined the Contract Documents including the Advertisement for Bids, Instruction to Bidders, Construction Agreement, Specifications and the Drawings, therein referred to and has carefully examined the locations, conditions and classes of materials for the proposed work, and agrees that he/she will provide all the necessary labor, machinery, tools, equipment, apparatus and other items incidental to construction and will do all the work and furnish all the materials called for in the Contract Documents in the manner prescribed therein. Bidder hereby declares that he/she has visited the site of the Work and has carefully examined the Contract Documents pertaining to the Work covered by the above Bid, and he/she further agrees to commence work within ten (10) consecutive calendar days after date of written Notice to Proceed and to substantially complete the work on which he/she has bid within the number of days specified subject to such extensions of time allowed by Specifications. Bidder certifies that the bid prices contained in this bid have been carefully checked and are submitted as correct and final. The prices have been shown in words and figures for each item listed in this bid and it is understood that in the event of a discrepancy, the words shall govern. Please initial.

(Required: Maximum 1000 characters allowed)

Bid Lines

1

Bid Grand Total

(Response required)

Quantity: 1 UOM: lump sum

Unit Price: \$

Total: \$

Supplier Notes:

☐ No bid

☐ Additional notes
(Attach separate sheet)

Item Attributes**1. Bid Grand Total- Written in Words**

The contract award will be based on the total bid price.

(Required: Maximum 4000 characters allowed)

2. Total Material Cost Incorporated in Project

\$

(Required: Numbers only)

3. Total Material Cost Incorporated in Project- Written in Words

(Required: Maximum 4000 characters allowed)

4. Total Labor Cost Incorporated in Project

\$

(Required: Numbers only)

5. Total Labor Cost Incorporated in Project- Written in Words

(Required: Maximum 4000 characters allowed)

Supplier Information

Company Name: _____

Contact Name: _____

Address: _____

Phone: _____

Fax: _____

Email: _____

Supplier Notes

The undersigned hereby certifies the foregoing bid submitted by the company listed below hereinafter called "bidder" is the duly authorized agent of said company and the person signing said bid has been duly authorized to execute same. Bidder affirms that they are duly authorized to execute this contract; this company; corporation, firm, partnership or individual has not prepared this bid in collusion with any other bidder or other person or persons engaged in the same line of business; and that the contents of this bid as to prices, terms and conditions of said bid have not been communicated by the undersigned nor by any employee or agent to any other person engaged in this type of business prior to the official opening of this bid.

Print Name

Signature