
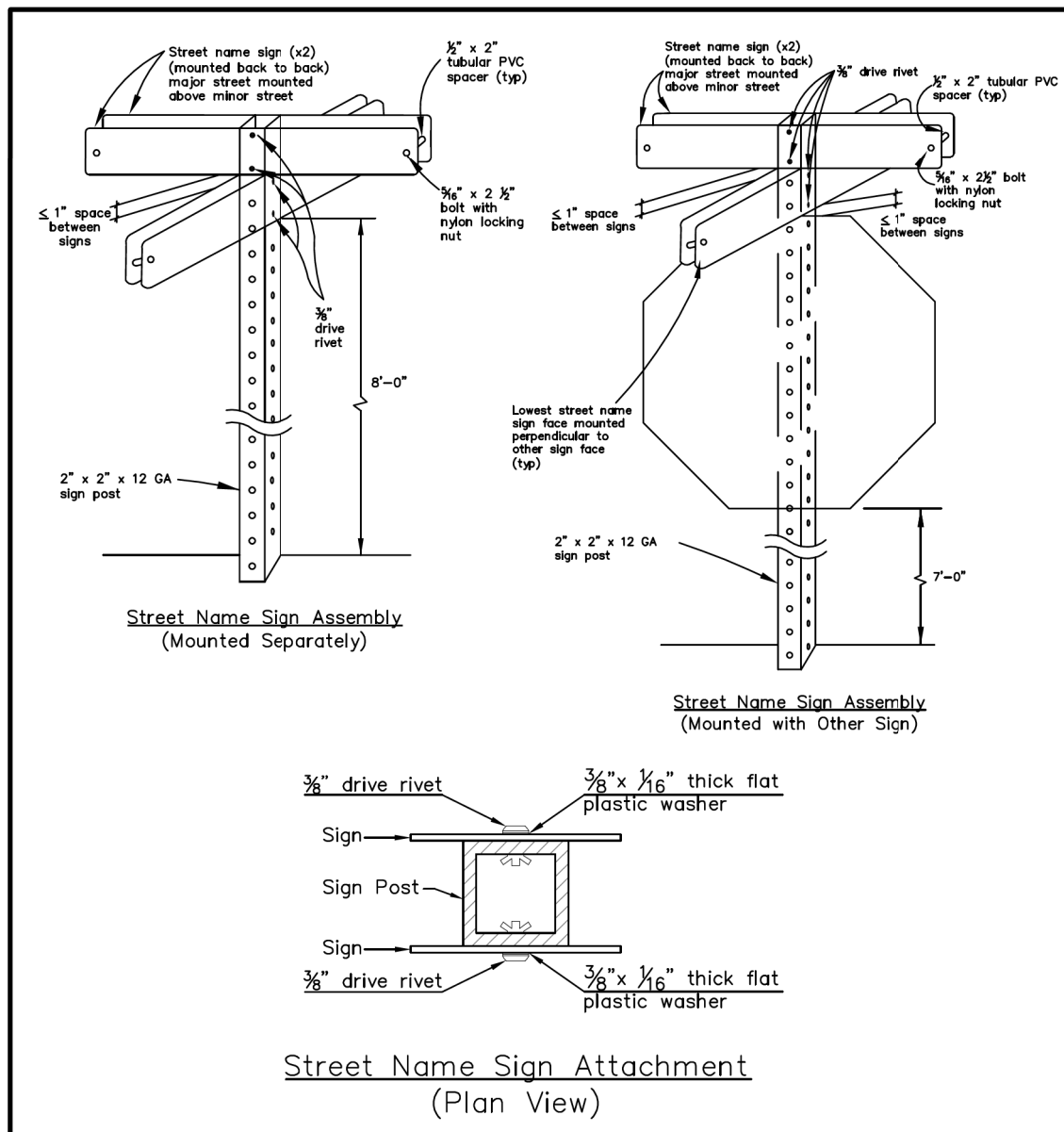


- Notes:
1. Street name signs shall be furnished and installed by the developer per the City's Standards.
  2. The installation of any signs must be completed prior to the final acceptance of the subdivision.
  3. All signs shall comply with the latest version of the MUTCD.
  4. Signs shall be as follows:
    - (a) Stop Sign: White ASTM high intensity prismatic grade reflective sheeting (manufactured by 3M or equal) covered with easy cuttable RED film, reverse screen process.
    - (b) Street Name Sign: White ASTM high intensity prismatic grade reflective sheeting (manufactured by 3M or equal) covered with easy cuttable GREEN film, reverse screen process.
  5. Name plate shall be mounted 12" from top of curb.
  6. Signs shall be mounted on a 2 inch by 12 foot minimum Telspar square post with one of the following anchor systems:
    - (a) 2 1/2 inch by 30 inch Telspar ground anchor, wrapped to prevent concrete infiltration into anchor post, set in 3,000 psi concrete 1 foot in diameter and 28 inches deep, or
    - (b) 2 1/2 inch by 30 inch Telspar ground anchor with 2 1/2 inch by 18 inch Telspar anchor sleeve driven into the ground to a depth of 28 inches. The anchor post system shall protrude 2 inches from finished grade at the base of the sign and bolted in accordance with manufacturer recommendations.
  7. Stop signs shall be mounted 7 feet from the top of the curb measured to the bottom of the lowest sign.
  8. Stop signs shall be mounted to provide a minimum 2 foot horizontal clearance from the edge of the sign to the back of curb. Name signs shall be mounted to provide a minimum 12 inch horizontal clearance from the edge of the sign to the back of the curb.
  9. Stop signs shall be 30" for single lane road, and 36" for a road intersecting a planned multi-lane road.
  10. For streets intersecting arterial roadways, developer/contractor shall contact the City Inspector to coordinate sign placement with City Traffic Department.
  11. Dimensions shown above are from back of curb.
  12. Street lights shall be located on opposite side of intersection from name blades.




RESIDENTIAL STREET LIGHT AND SIGN LOCATIONS  
CITY OF MCKINNEY, TEXAS

DATE: JANUARY 1, 2018  
STANDARD DRAWING NO. 7003MA

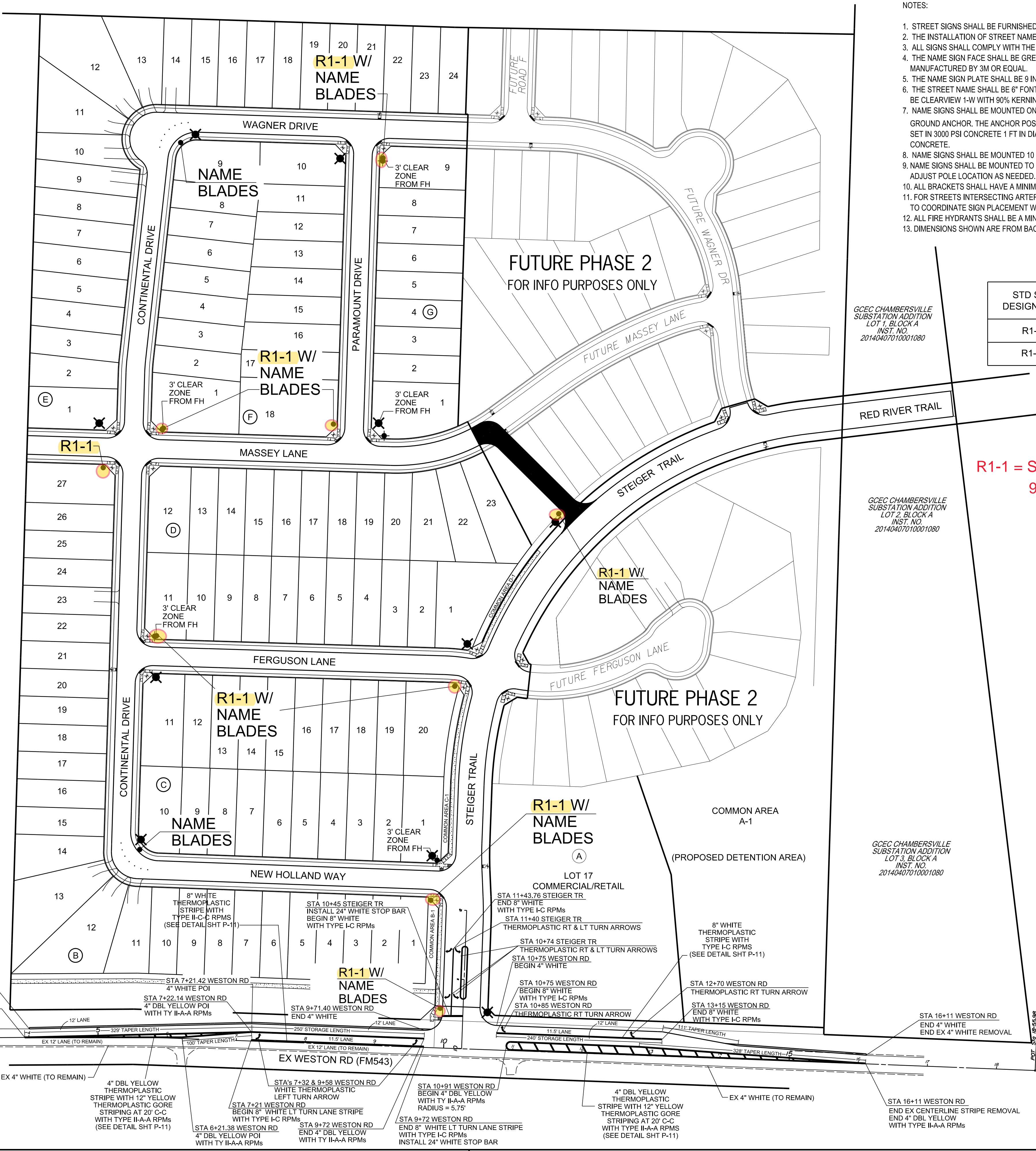


- Notes:
1. If length of name sign blade is greater than 54", a double mount shall be installed according to details as shown.
  2. 9" minimum blade mount may be used if both street name sign blades are equal to or less than 36".
  3. For TxDOT name sign assemblies, contractor will need to provide adapter coupler detail.

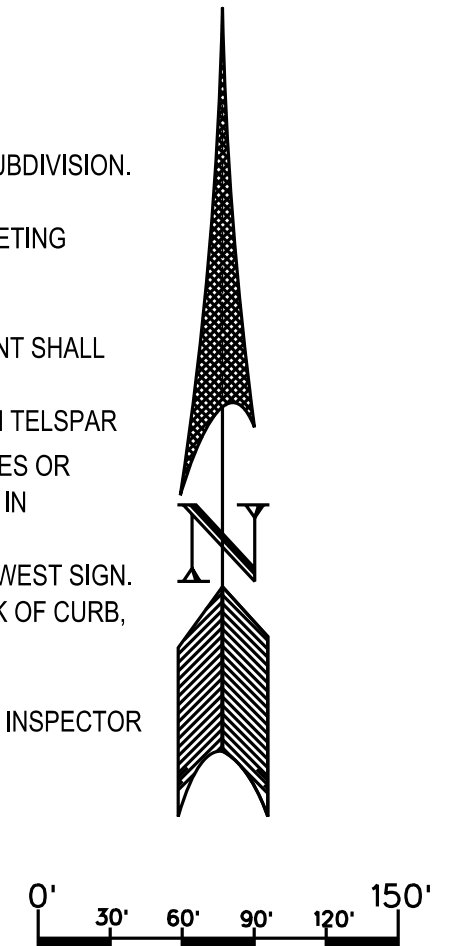


STREET NAME SIGN DETAILS  
DOUBLE MOUNT  
CITY OF MCKINNEY, TEXAS

DATE: JANUARY 1, 2018  
STANDARD DRAWING NO. 7003MC



- NOTES:
1. STREET SIGNS SHALL BE FURNISHED AND INSTALLED BY THE DEVELOPER.
  2. THE INSTALLATION OF STREET NAME SIGNS MUST BE COMPLETED PRIOR TO FINAL ACCEPTANCE OF THE SUBDIVISION.
  3. ALL SIGNS SHALL COMPLY WITH THE LATEST VERSION OF THE MUTCD.
  4. THE NAME SIGN FACE SHALL BE GREEN ASTM TYPE IV HIGH INTENSITY PRISMATIC GRADE REFLECTIVE SHEETING MANUFACTURED BY 3M OR EQUAL.
  5. THE NAME SIGN PLATE SHALL BE 9 INCHES TALL BY 0.125 INCHES THICK MINIMUM.
  6. THE STREET NAME SHALL BE 6" FONT WITH UPPER & LOWER CASE LETTERS. SUFFIX SHALL BE 3" FONT. FONT SHALL BE CLEARVIEW 1-W WITH 90% KERNING. ALL LETTERS SHALL BE WHITE.
  7. NAME SIGNS SHALL BE MOUNTED ON A 2 INCH BY 12 FT TELSPAR SQUARE POST WITH A 2 1/2 INCH BY 30 INCH TELSPAR GROUND ANCHOR. THE ANCHOR POST SHALL EITHER BE DRIVEN INTO THE GROUND AT A DEPTH OF 28 INCHES OR SET IN 3000 PSI CONCRETE 1 FT IN DIAMETER AND 24 INCHES DEEP. THE ANCHOR POST BE WRAPPED IF SET IN CONCRETE.
  8. NAME SIGNS SHALL BE MOUNTED 10 FEET FROM THE TOP OF CURB MEASURED TO THE BOTTOM OF THE LOWEST SIGN. THE ANCHOR POST SHALL EITHER BE DRIVEN INTO THE GROUND AT A DEPTH OF 28 INCHES OR SET IN 3000 PSI CONCRETE 1 FT IN DIAMETER AND 24 INCHES DEEP. THE ANCHOR POST BE WRAPPED IF SET IN CONCRETE.
  9. NAME SIGNS SHALL BE MOUNTED TO PROVIDE A MINIMUM 1 FOOT HORIZONTAL CLEARANCE FROM THE BACK OF CURB. ADJUST POLE LOCATION AS NEEDED.
  10. ALL BRACKETS SHALL HAVE A MINIMUM SLOT LENGTH OF 9 INCHES AND BE DESIGNED FOR FLAT BLADES.
  11. FOR STREETS INTERSECTING ARTERIAL ROADWAYS, DEVELOPER/CONTRACTOR SHALL CONTACT THE CITY INSPECTOR TO COORDINATE SIGN PLACEMENT WITH CITY PUBLIC WORKS DEPARTMENT.
  12. ALL FIRE HYDRANTS SHALL BE A MINIMUM OF 3 FEET FROM SIGN POLES AND LIGHTS.
  13. DIMENSIONS SHOWN ARE FROM BACK OF CURB.



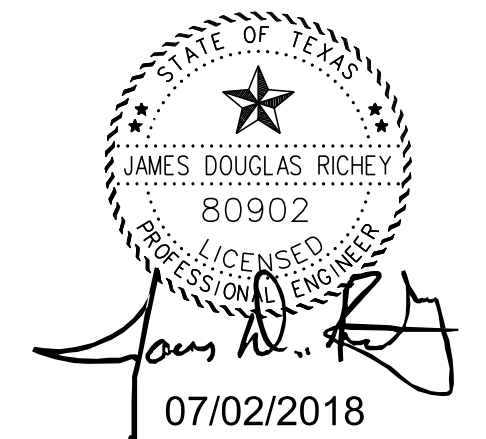
STD SIGN DESIGNATION	DESCRIPTION	SIZE (INCHES)	SIGN COLOR (BACKGROUND / LETTERS OR SYMBOLS)
R1-1	STOP SIGN (HIGH INTENSITY)	36 X 36 (AT FM 543 & STEIGER TRAIL ONLY)	RED/WHITE
R1-1	STOP SIGN (HIGH INTENSITY)	30 X 30 (ALL OTHER RESIDENTIAL STREETS)	RED/WHITE

SEE SHEET N-1  
FOR GENERAL NOTES  
SEE SHEET P-11  
FOR STRIPING DETAILS

- LEGEND:**
- ✖ DENOTES PROPOSED STREET LIGHT LOCATION
  - DENOTES PROPOSED SIGNAGE POLE

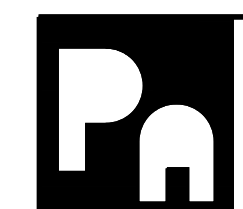
NOTE: LIGHTS AND SIGNAGE SHALL BE INSTALLED PER THE CITY OF MCKINNEY'S AND THE UTILITY COMPANY'S SPECIFICATIONS. THIS PLAN SERVES ONLY TO DENOTE THE INSTALLATION LOCATION.

**RELEASED FOR CONSTRUCTION**  
CITY OF MCKINNEY ENGINEERING DEPARTMENT  
July 25, 2018 by ENG - Stephen Jones  
Prior to commencing construction, the owner or their representative shall hold a Pre-Construction Conference with and be issued a Development Permit by the City of McKinney Engineering Department. A copy of the Development Permit and these stamped construction drawings shall be maintained on the construction site at all times. If a conflict is found between these construction drawings and the City of McKinney Construction Standards, the City of McKinney Construction Standards shall govern.



**BENCHMARKS:**

- City of McKinney Monument #25  
Elevation - 598.28 (NAVD88)  
Concrete Monument near stop sign at CR168 and FM 543.
- City of McKinney Monument #26  
Elevation - 628.42 (NAVD88)  
Concrete Monument at the northwest corner of CR 206 and CR 281.



PETSCH & ASSOCIATES, INC.  
Professional Engineers - Land Surveyors - Development Consultants  
Texas Registered Engineering Firm F-3252  
2600 Eldorado Pkwy., Suite 240, McKinney, Texas 75070 (972) 562-9606

WESTON RIDGE PHASE 1  
WESTON RIDGE DEVELOPMENT, L.L.C.  
SIGNING, LIGHTING AND STRIPING PLAN

Drawn by: TMH  
Designed by: TMH  
Date: JULY 2018  
Checked by: JDR  
SCALE: 1"=80'  
JOB NUMBER: 17-201-1  
SHEET: L-1