



***LifePath Systems***

*Building stronger communities, person by person.*



# LifePath Systems Update

Behavioral Health in Collin County

November 4, 2019

# Remarks by Sonja Gaines



Associate Commissioner for Behavioral Health and Intellectual and  
Developmental Disabilities

Texas Health and Human Services

# Impact of Recent Legislative Session



Population growth funding for BH

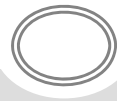
Additional access to contracted local inpatient beds

Significant increase in funding for Early Childhood Intervention

Small rate increases for IDD residential

All Access Texas initiative

# Contracts with Inpatient Facilities



Haven Hospital (Frisco)

Methodist Richardson (Richardson)

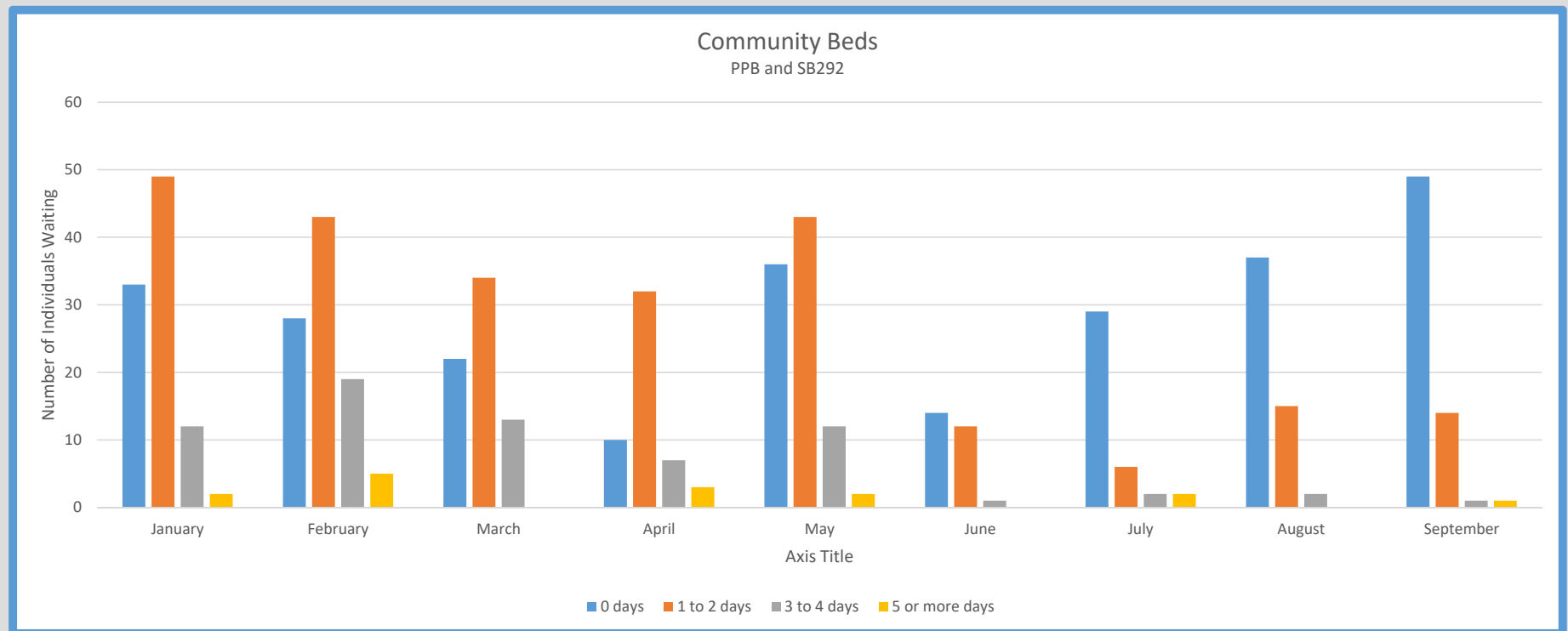
Glen Oaks (Greenville)

Garland Behavioral (Garland)

Dallas Behavioral (DeSoto)

Texoma Behavioral (Sherman)

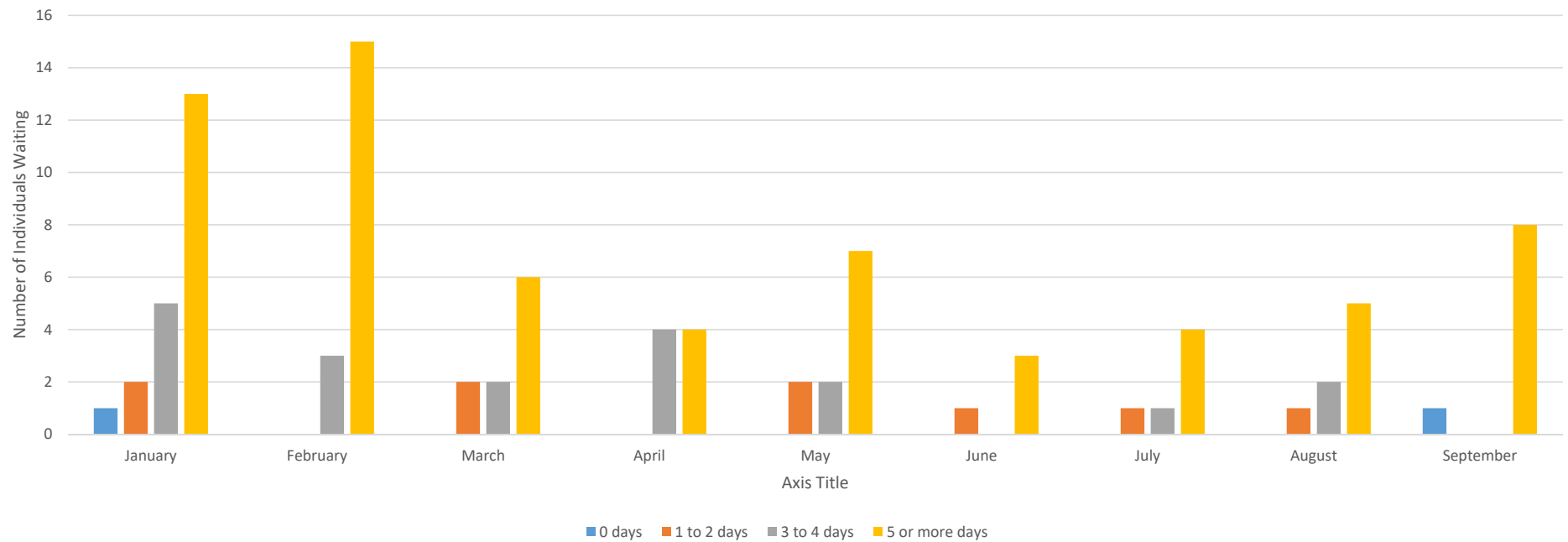
# LifePath Contract Inpatient Wait Times



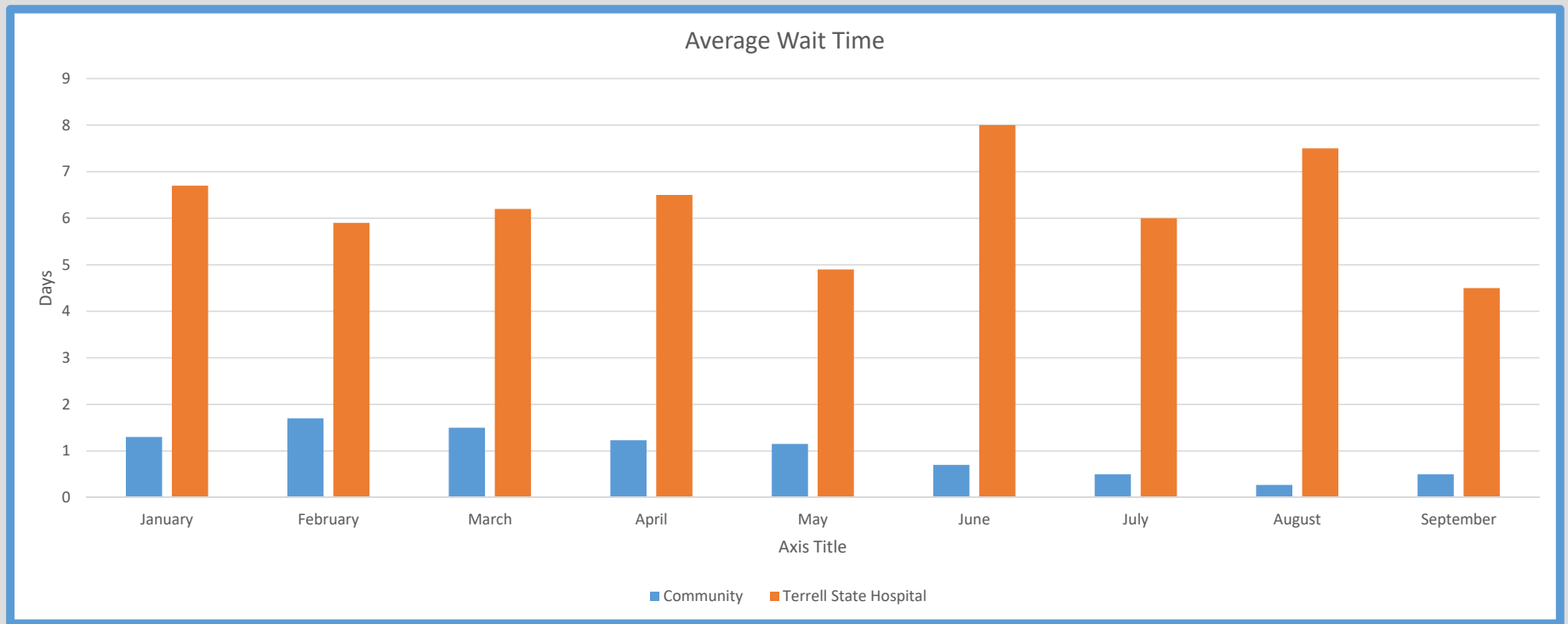
# State Hospital Wait Times



Terrell State Hospital



# Comparison of Average Wait Times



# Projects in Progress



Increased Mental Health First Aid Training

Certified Community Behavioral Health Center (CCBHC)

Disaster Response Team

LOSS

THR Collaboration “Beyond Blue”




# The Legan Place



PLEASE JOIN US FOR AN


*Open House and  
Dedication Ceremony*



*The Legan Place*

The Legan Place is an innovative model of  
early intervention for young individuals  
experiencing an initial symptom of mental illness.

209 N. Benge- McKinney



November 4, 2019  
Dedication Ceremony 4:15  
Tours - 4:00 - 6:00 PM

