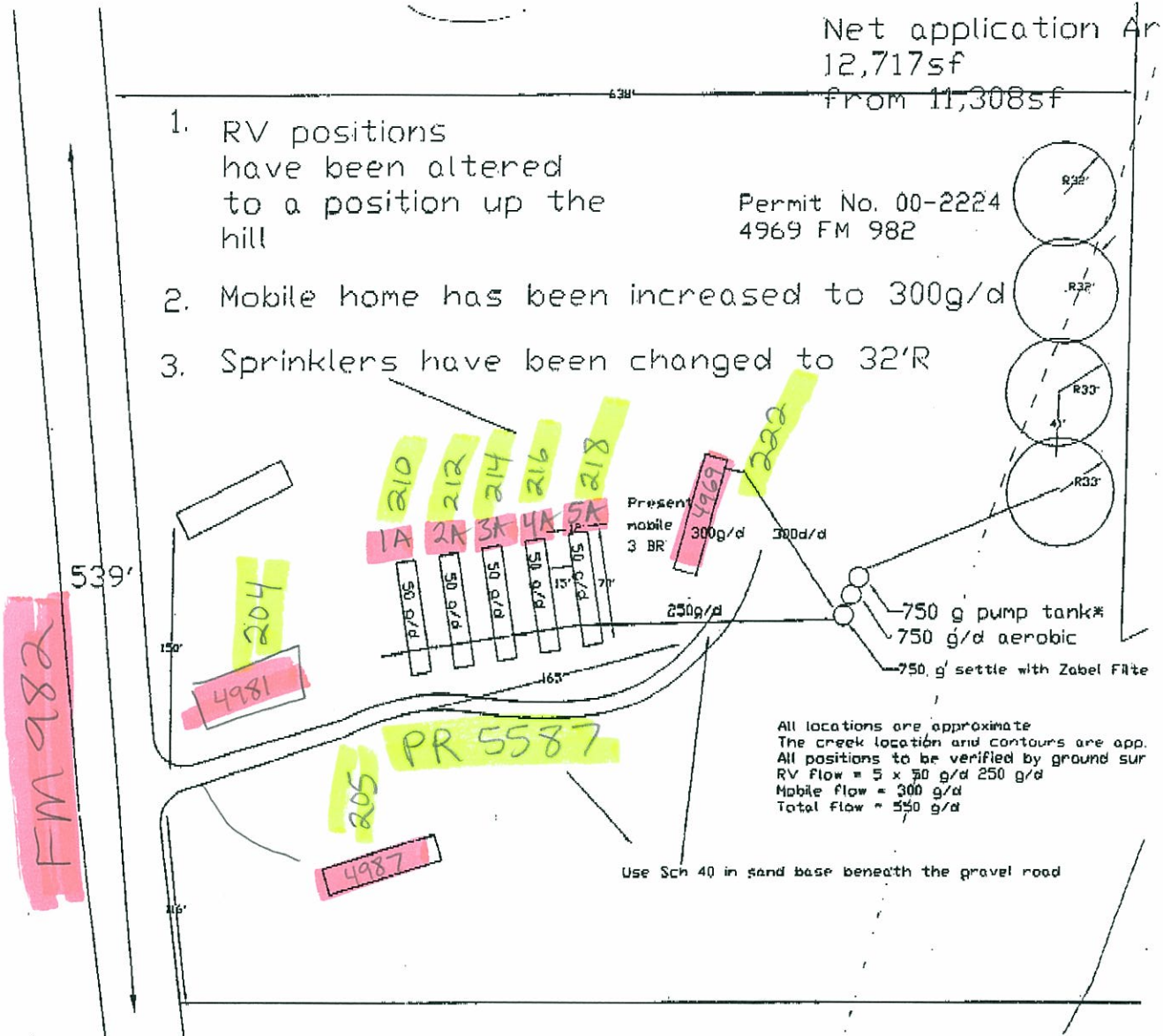


New

Net application Ar  
12,717sf  
from 11,308sf

1. RV positions have been altered to a position up the hill
2. Mobile home has been increased to 300g/d
3. Sprinklers have been changed to 32'R

Permit No. 00-2224  
4969 FM 982



All locations are approximate  
The creek location and contours are app.  
All positions to be verified by ground sur  
RV flow = 5 x 50 g/d 250 g/d  
Mobile flow = 300 g/d  
Total flow = 550 g/d

Use Sch 40 in sand base beneath the gravel road

APPROVED