



COLLIN COUNTY, TEXAS

ADDENDUM No. One (1)

IFB NO. 03183-12

INVITATION FOR BIDS
FOR
Waterproofing of Cooling Tower

DATE: April 16, 2012

NOTICE TO ALL PROSPECTIVE BIDDERS:

YOU ARE HEREBY DIRECTED TO MAKE CHANGES TO THE INVITATION FOR BIDS IN ACCORDANCE WITH THE ATTACHED INFORMATION.

ADD: Pre-Bid Sign-In form

ADD: Cooling_Tower_Submittal.pdf (original coating)

ADD: S3-9_2.pdf (drawings)

Clarifications:

- 1.) Minimum material spec: Tremco Vulkem Primer No. 171 (one coat), Tremco Vulkem Base No. 350R (one coat), and Tremco Vulkem Top Coat No. 951 (one coat)
- 2.) Minimum Warranty: 10 year
- 3.) Dumpster: successful bidder to furnish, CC will provide a space
- 4.) The successful bidder will need to remove the fill material and mist eliminator to access the walls in the upper portion of the cooling tower. The volume of fill and mist eliminator should show in the drawings. The coating will need to be removed and replaced all the way up to the fans. Some spray heads may need to be removed also.

PLEASE NOTE ALL OTHER TERMS, CONDITIONS, SPECIFICATIONS DRAWINGS, ETC. REMAIN UNCHANGED.

SINCERELY,
FRANKLIN YBARBO
PURCHASING AGENT



PRE-BID SIGN-IN SHEET

Project: IFB 03183-12, WATERPROOFING OF COOLING TOWER

Meeting Date: APRIL 12, 2012

Facilitator: MATT DOBECKA, CPPB COLLIN COUNTY PURCHASING

Place/Room: COLLIN COUNTY CENTRAL PLANT

Name	Company	Phone	Fax	E-Mail
Ben Gray	Tower Tech Svc	214-526-0031	210 308 6525	Bengray@tower-tech.com
Mindy Davis	Collins County	972-548-4125	972-548-4124	mindydavis@co.collin.tx.us
MATT DOBECKA	"	" " 4103	972 548 4694	m.dobacka@co.collin.tx.us
COFFMANN WILKERSON	"	" " 4110	972 548 4104	Coffmann@co.collin.tx.us
Randy Brokomeyer	Planet Earth	978-587-2085	972-551-5821	Randy@PES-SOLUTIONS.COM
BILL BARKE	Collins County	972-547-5340		blanke@co.collin.tx.us
RAZ MADASZ	COLLIN COUNTY	9725475332		razmadasz@co.collin.tx.us
Daniel Dadd	Chamberlin Dallas	(214)273-9110	(214)273-9120	dadd@chamberlinhd.com

Submittal No. 07120 B-1A

- Approved
 Approved as noted
 Revise and Resubmit
 Reviewed and sent to Construction Manager

Approved only as to general design and conformance with the intent of the Architect's and/or Engineer's drawings and specifications. The Subcontractor and/or Vendor is responsible for accuracy and fit.

By Scott Huson Date 1/27/93
CHARTER BUILDERS, INC., McKinney, Texas Job No. 921001

SUBMITTAL NO. 07120 B-1A
REVIEWED BY FLUOR DANIEL FOR GENERAL CONFORMANCE TO THE CONTRACT DOCUMENTS

BY: Go DATE: 2/1/93

APPROVED
APPROVED AS NOTED
REVISE AND RESUBMIT
NOT APPROVED
NO ACTION REQUIRED



Approval is only for conformance with the design concept of the project and conformance with the intent of the information given in the Contract Documents. Contractor is responsible for dimensions to be confirmed and checked at the job site; for information that pertains solely to the fabrication processes or to techniques of construction; and for coordination of the work of all trades.

HENNINGSON DURHAM & RICHARDSON

By H. Moore Date 2-16-93

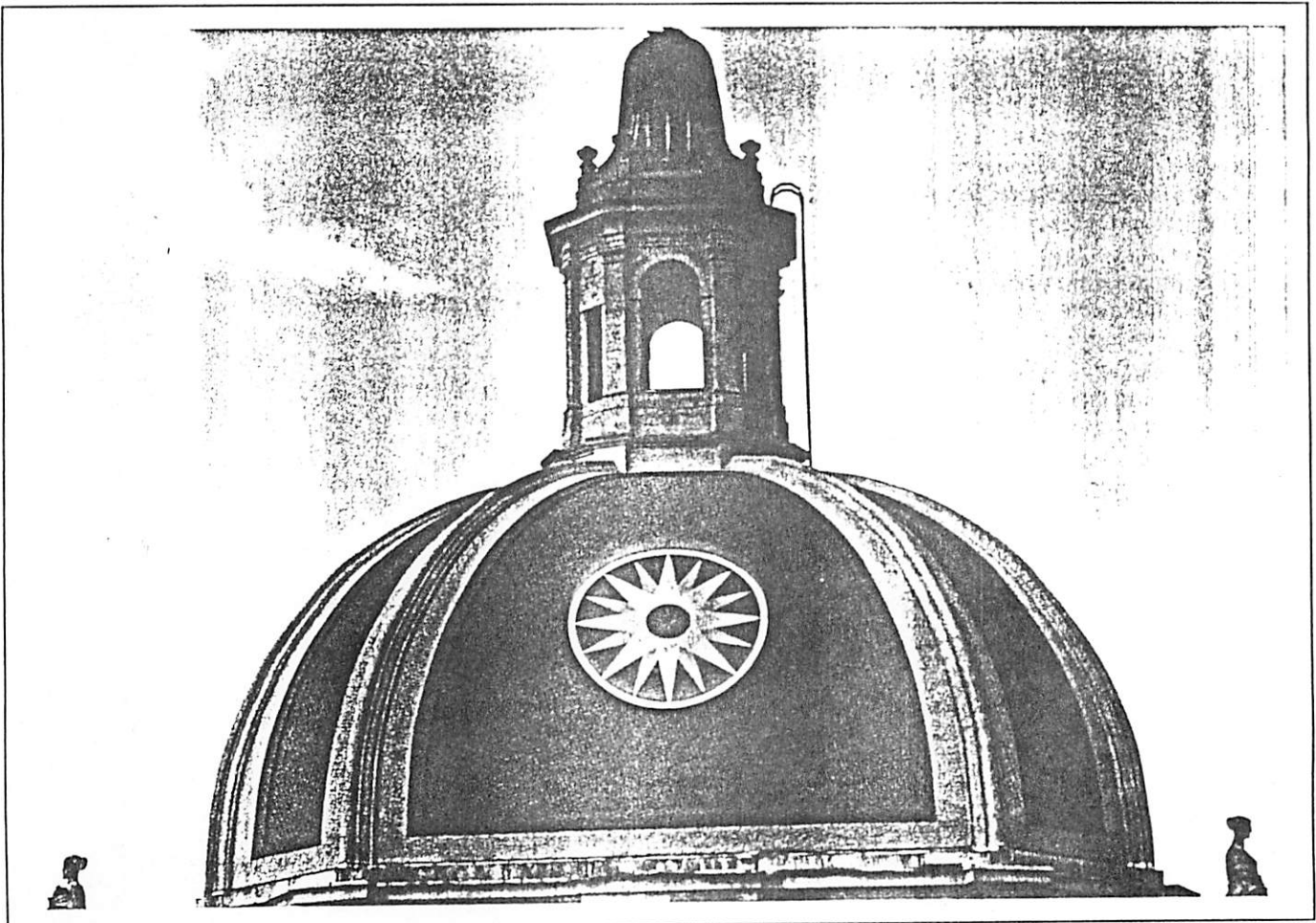
Shop drawing reference no. 07120 B-1A

BY: _____ DATE: 5/1/15

CONFORMANCE TO THE CONTRACT DOCUMENTS
REVIEWED BY FLOR DANIEL FOR GENERAL
SUBMITTAL NO. 11-1-15

_____ DATE: _____

***For higher performance
and lower installed costs
specify Accoguard coatings.***



Ontario Bldg. — Exhibition Place • Toronto, Ontario • Multi-Color Roof Rehabilitation

ACCOGUARDTM

Single-component, chemically-cured urethane coatings for roofs, parking structures, pedestrian decks, plazas and reflecting pools.

**Quick, easy application.
Unsurpassed durability.
Only Accoguard™ gives you both.**

When choosing coatings the alternatives were always:

- toughness or elasticity
 - outgassing or 2-component
 - fast cure or heavy millages
- But not anymore.

Because now there's Accoguard. Coatings that go on fast and easy in any application—yet tough enough to outlast all other systems.

Single-component, chemically-cured formula for fast, easy application.

Accoguard's advanced technology enables a chemically-cured urethane to be shipped in a single component package.

Because it's a single component, there's no messy, time-consuming on-site blending. You simply stir as you would paint—to apply the primer, membrane, and finish coats that your application requires.

But that's just the beginning. Accoguard's unique catalyst eliminates the outgassing common to other single component coatings, so heavier single coat millages are applied—cutting down the total number of coats needed. Because it chemically cures, you spend less time waiting between coats and get the job done faster, plus with Accoguard, you can work in temperatures as low as 32°F.

Nothing outlasts Accoguard.

Regardless of the application—pedestrian, vehicular or roofing—the specified Accoguard coating meets or exceeds every performance characteristic of conventional coatings.

That's because Accoguard's advanced technology combines high tensile strength with high elongation in a single product. Equally important, Accoguard's series of single-component epoxy and urethane primers provide superior adhesion because they are designed to penetrate the substrate and chemically bond to the coating.

And while Accoguard is tough, it never gets brittle. In fact, it's flexible enough to sustain movement at -50°F—so even the most bitter cold won't crack it. All this means that when properly applied, Accoguard will last at least as long as any coating you've ever used—and quite possibly longer.

The right choice for your application.

There's an Accoguard Coating System that's right for every application: pedestrian areas, vehicular traffic areas, roofs, plazas, even reflecting pools. Aliphatic urethanes are available for applications where long term color stabilization is required.

Accoguard's speed and durability make it the logical choice for new construction. But, it's also perfect for rehabilitation jobs. Accoguard has been proven to prevent normal deterioration of concrete surfaces due to salt water, chemicals, and freeze/thaw cycles. When Accoguard is applied over rehabilitated concrete, it can significantly reduce future corrosion of the reinforcing steel—providing dramatic cost savings over the long haul.

Environmentally Safe.

All Accoguard products meet current VOC standards. When working indoors or in confined spaces, very high solids primers and coatings which are nearly odorless, are available.

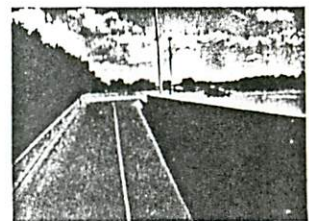
Call American Colloid for more information and the name of the approved applicator in your area.

And specify the one coating that goes on fast, yet lasts, and lasts. Accoguard.

Completed Installations:



*Supreme Court Bldg.
Washington D.C.
Plaza Waterproofing*



*Iverson Mall
Prince Georges County, MD
Parking Deck Rehabilitation*

Primers

LDC 1000E

Single-component, epoxy primer used primarily on concrete surfaces. May also be used as a concrete sealer or surface hardener. Complies with NCHRP-244 requirements.

LDC 1000 has distinct advantages when coating in warm weather because in addition to providing excellent adhesion, the product reduces the surface porosity of the concrete so that far less concrete outgassing occurs. The product is approved for use over all concrete surfaces and is the only product approved for coating slab-on-grade, "sandwich" slab construction and submersed coatings. The product complies with the 400 g/l VOC limit for primers and sealers.

LDC 1000U - COLD WEATHER USE

Single-component urethane primer designed to penetrate and adhere to concrete surfaces. The product cures faster than LDC 1000 in colder weather and will also seal concrete surfaces to reduce outgassing. Is approved for use in less demanding situations where concrete is suspended or vented, such as suspended concrete parking slabs, plazas and mechanical rooms. The product complies with the 400 g/l VOC limit for primers and sealers.

LDC 1000 METAL

Single-component primer for adhesion to almost all metal surfaces, including galvanized metals, copper, stainless steel and aluminum. Also provides excellent adhesion to non-metal surfaces and existing coatings. Not approved for use over silicone. The product complies with the 400 g/l VOC limit for primers and sealers.

LDC 1000 VHS

LDC 1000 **Very High Solids** is a revolutionary primer containing nearly zero VOC. It is ideal for indoor and confined space projects. Provides excellent adhesion to most substrata.

LDC 2000 PRIMER

Single-component, urethane primer used primarily over wood, asphalt and tar surfaces. May also be used as a concrete sealer. Complies with NCHRP-244 requirements. The product complies with the 400 g/l limit for primers and sealers.

Coatings

LDC 5550

Single-component chemical-cure urethane coating for applications subjected to wear from vehicular and pedestrian traffic. Also for use on balconies. The product has excellent curing properties at low temperatures. It can be applied when the surface temperature is 35°F and the ambient temperature is 40°F and will continue to cure even if the ambient temperature drops below 32°F. The product complies with the 250 g/l VOC limit for traffic coatings.

LDC 5551 TOP COAT

Single-component aromatic urethane coating system designed for roofing applications. The coating offers the same low temperature application advantages as LDC 5550. LDC 5551 Top Coat has excellent UV resistance and can also be used for non-traffic bearing plaza waterproofing. The product complies with the 300 g/l VOC limit for roof coatings.

LDC 5551 BASE COAT

Single-component aromatic urethane coating designed to be an economical base coat for roofing

applications. The coating is not to be left exposed to the elements. It must be re-coated with either LDC 5551 Top Coat or LDC 5560. The product complies with the 300 g/l VOC limit for roof coatings.

LDC 5552

Single-component aromatic urethane designed for indoor use subjected to non-vehicular traffic such as mechanical rooms. Being designed for indoor use it has a high solids content to keep odors to a minimum. The product complies with the 250 g/l VOC limit for traffic coatings.

LDC 5553

Single-component chemical cure polyurethane for use in submersed conditions such as, reflecting pools and water features. Product has excellent UV resistance, does not fade, yellow or chalk. The product must be applied at a minimum surface and ambient temperature of 45°F and when the ambient temperature will not fall below 40° for 24 hours. The product complies with the 250 g/l limit for traffic coatings.

LDC 5554

Single-component chemical-cure urethane coating for applications subjected to wear from vehicular and pedestrian traffic. Also for use on balconies. The product is designed to be installed in high temperature and humidity conditions. It also has excellent curing properties at low temperatures, and can be applied when the surface temperature is 35°F and the ambient temperature is 40°F, and will continue to cure even if the ambient temperature drops below 32°F. The product complies with the 250 g/l VOC limit for traffic coatings.

LDC 5555

Single-component chemical-cure aliphatic based urethane top coat for pedestrian, balcony and pool applications where UV resistance and aesthetic considerations are important. The product must be applied at a minimum surface and ambient temperature of 45°F and when the ambient temperature will not fall below 40° for 24 hours. The product complies with the 250 g/l limit for traffic coatings.

LDC 5560

Single-component aliphatic based urethane coating designed for high profile roofing applications where aesthetic considerations are important. Ideal for coating metal roofs. The product must be applied at a minimum surface and ambient temperature of 45°F and when the ambient temperature will not fall below 40° for 24 hours. LDC 5560 has excellent UV resistance. The product complies with the 300 g/l VOC limit for roof coatings.

MICHAEL GIBBONS, CDT
 ARCHITECTURAL SYSTEMS
 214-960-8726
 TX, STE 113
 4444 SPRING VALLEY
 DALLAS, TX 75244 BG
 61835

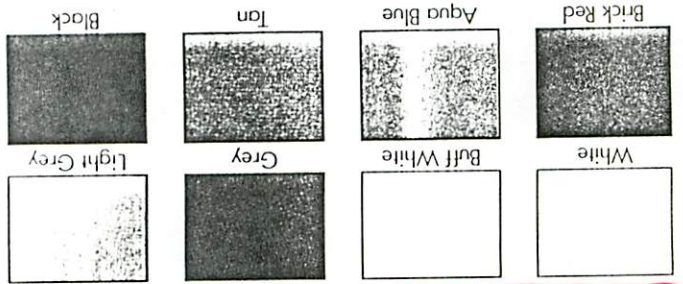
Represented by:

Building Materials Group
 Construction Coatings Division
 1500 W. Shure Drive
 Arlington Heights, IL 60004
 708/392-4600 • FAX 708/506-6199

American Colloid Company



The color reproductions are as close to actual colors as modern printing technology will permit. Color may vary slightly from sample due to lighting, surface texture and application.



Standard Colors
 FURNISH SAMPLES FOR SELECTION

*LDC 5551 TOP COAT COLORS

Product	LDC 5550	LDC 5551*	LDC 5552	LDC 5553	LDC 5554	LDC 5555	LDC 5560
Color	X	X	X	X	X	X	X
Grey				X			
Light Grey				X			
Brick-Red	X	X	X		X	X	X
Tan	X	X	X		X	X	X
White	X	X	X		X	X	X
Buff White	X	X	X		X	X	X
Aqua Blue	X	X	X		X	X	X
Black	X	X	X		X	X	X
Clear							

Standard Color Availability

Application/Use

Application/Use	LDC 5540	LDC 5545	LDC 5550	LDC 5551	LDC 5552	LDC 5553	LDC 5554	LDC 5555	LDC 5560
Exposed pedestrian applications subjected to foot traffic only	S	S	S	S	S	S	S	S	S
Interior mechanical rooms subjected to foot traffic only	S	S	S	S	S	S	S	S	S
Exposed vehicular applications subjected to normal vehicular traffic	S	S	S	S	S	S	S	S	S
Exposed vehicular applications subjected to normal vehicular traffic, hot weather conditions	S	S	S	S	S	S	S	S	S
Exposed vehicular or pedestrian applications where coating is in slab, slab-on-grade, sidewalk, or sandwich	S	S	S	S	S	S	S	S	S
Exterior applications subjected to normal vehicular or pedestrian traffic	S	S	S	S	S	S	S	S	S
Submersed coatings such as reflecting pools or water features	S	S	S	S	S	S	S	S	S
Painting applications over concrete, substrates	S	S	S	S	S	S	S	S	S
Painting applications over metal and existing coating substrates	S	S	S	S	S	S	S	S	S

S Standard
 O Optional

Conversion Chart

Wet Mills (100 in.) Gal./Square	sq. Ft./Gal.
1	1,666
5	333
10	166
15	111
20	83
25	67
30	56
35	48
40	42
45	37
50	33
55	30
60	28

WARRANTY

The Accoguard and other products are warranted to be free from defects in material and workmanship for a period of one year from the date of application. This warranty is limited to the original application and does not extend to any subsequent applications. The Accoguard and other products are warranted to be free from defects in material and workmanship for a period of one year from the date of application. This warranty is limited to the original application and does not extend to any subsequent applications. The Accoguard and other products are warranted to be free from defects in material and workmanship for a period of one year from the date of application. This warranty is limited to the original application and does not extend to any subsequent applications.

MICHAEL GIBBONS, CDT
ARCHITECTURAL SYSTEMS 61835
214-960-8726
4444 SPRING VALLEY, STE 113
DALLAS TX 75244 BG

1. PRODUCT NAME

ACCOGUARD™ Traffic Bearing Coating System

2. MANUFACTURER

American Colloid Company
Construction Coatings Division
One North Arlington
1500 West Shure Drive
Arlington Heights, IL 60004
Phone: (708) 392-4600
FAX: (708) 506-6195
Telex: 4330321 AMER COL

3. PRODUCT DESCRIPTION

ACCOGUARD Traffic Bearing Coating System is a fluid-applied elastomeric waterproofing membrane with an integral wearing surface.

Basic Uses: ACCOGUARD Traffic Bearing Coating System is recommended for use on surfaces exposed to vehicular or pedestrian traffic, to protect occupied spaces below from water and to protect concrete from damage due to freeze/thaw cycling or chloride induced corrosion of reinforcing steel. The coating system is designed for use on concrete, plywood, masonry and metal surfaces. A properly designed and applied system will provide a continuous, seamless, waterproof, non-slip durable membrane.

Composition and Materials: ACCOGUARD Traffic Bearing Coating System is composed of unique single component chemical cure polyurethane elastomers, and single component epoxy primer and selected aggregate.

Sizes: The products are shipped in liquid form in either 5 gallon or 55 gallon metal containers.

Color: Standard colors are gray and tan. Other colors are available on special order, pricing subject to inquiry.

Limitations: ACCOGUARD Traffic Bearing System must be applied to hard, smooth, clean, and dry substrates. Concrete surfaces must be cured by an approved curing agent or water curing process. Concrete must be completely cured, dry and uncontaminated to the extent that ordinary alkaline cleaners, muriatic acid, light sandblasting or power blast will properly prepare the surface.

The system is designed to bridge cracks that open up in the substrate up to 1/16" in width. Maximum acceptable width of caulked joints is 1" nominal with a maximum total movement of 25%.

The system cannot be bonded to wax, oils, grease or tar. Minimum surface temperature at the time of application is 40°F (4°C).

4. TECHNICAL DATA

Physical properties of the fluid membrane are presented in Table 1. Test results of the cured coating film are presented in Table 2.

5. INSTALLATION

Licensed Applicator: ACCOGUARD materials are sold through licensed applicators of American Colloid Company having necessary skills and training. Applicators are licensed on a non-exclusive basis.

Preparatory Work: Surface preparation is the key element to assuring a properly applied system. Concrete surfaces should be sandblasted, power blasted or treated with muriatic acid to remove laitence and other contaminants which will affect penetration of the primer. Surfaces shall be uniform, clean, dry and free of ridges, sharp projections or other defects.

Concrete surfaces shall be cured for a minimum of 28 days—water cure treatment is preferred. Concrete should be finished with a power or hand steel trowel followed by a soft hair broom to obtain a light texture (sidewalk) finish.

Methods: ACCOGUARD materials may be applied using squeegee, roller, airless spray or a combination of the above.

Primer: Prime all concrete and masonry surfaces with LDC 1000 applied at a rate of 150 square feet per gallon. Prime metal surfaces with LDC 1000 Metal at a rate of 200 square feet per gallon. Re-prime areas where primer has excessive absorption to produce a shiny surface. Primer may be overcoated when primer is tacky to the touch, but cannot be lifted from the surface. Re-prime all surfaces where primer has been applied in excess of 36 hours.

Detail Work: Apply the recommended dry film thickness of

SPEC DATA

This Spec-Data sheet conforms to editorial style prescribed by The Construction Specifications Institute. The manufacturer is responsible for technical accuracy.

nonflowing type coating over all flashings as noted on the drawings. Extend coating 2" beyond flashing out onto adjacent deck surface. Unless otherwise indicated on drawings or where limited by height of base, extend coating a minimum of 1" above the top of the flashing and terminate in a straight line. Use masking tape for such purposes.

Apply two (2) liberal coats for a distance of 3" on each side of all cracks and construction joints.

Pedestrian Areas: Apply LDC 5550 at a rate of 83 square feet per gallon to yield a 20 mil base coat. Allow to cure.

Apply LDC 5550 at a rate of 166 square feet per gallon to yield a 10 mil film. While coating is still fluid, broadcast LDC 7000 aggregate at a rate of 15 pounds per 100 square feet. Allow to cure.

Sweep excess aggregate and top-coat with LDC 5550 applied at a rate of 166 square feet per gallon.

On areas where long term aesthetics are valued use LDC 5555 an aliphatic base urethane lock coat. LDC 5555 may be clear where special aggregate is used to provide color.

Allow each layer to cure for 8 hours minimum. At temperatures below 60°F, extend curing time. Allow system to cure for an additional 24 hours minimum prior to subjecting coating to traffic.

Normal Wear Vehicular: Apply LDC 5550 at a rate of 83 square feet per gallon to yield a 20 mil base coat. Allow to cure.

Apply LDC 5550 at a rate of 166 square feet per gallon to yield a 10 mil film. While coating is still fluid, evenly broadcast LDC 7000 aggregate at a rate of 20 pounds per 100 square feet. Allow to cure.

The ten-point Spec-Data® format has been reproduced from publications copyrighted by CSI, 1964, 1965, 1966, 1967, and used by permission of The Construction Specifications Institute, Alexandria, VA 22314.



American Colloid Company
February 1991

7

TRAFFIC COATINGS
Elastomeric Wearing Surface

TRAFFIC COATINGS
Elastomeric Wearing Surface

7

American Colloid Company
February 1991



CONTR. - NOTE

Sweep excess aggregate and top-coat with LDC 5550 applied at a rate of 166 square feet per gallon.

Allow each layer to cure for 8 hours minimum. At temperatures below 60°F, extend curing time. Allow system to cure for an additional 24 hour minimum prior to subjecting coating to traffic.

Heavy Duty Vehicular: Apply LDC 5550 at a rate of 66 square feet per gallon to yield a 25 mil base coat. Allow to cure.

Apply LDC 5550 at a rate of 83 square feet per gallon to yield a 20 mil film. While coating is still fluid, evenly broadcast LDC 7000 aggregate at a rate of 40 pounds per 100 square feet. Allow to cure.

Sweep excess aggregate and top-coat with LDC 5550 applied at a rate of 166 square feet per gallon.

Allow each layer to cure for 8 hours minimum. At temperatures below 60°F, extend curing time. Allow system to cure for an additional 24 hours minimum prior to subjecting coating to traffic.

Cleaning: Clean stains from adjacent surfaces with MEK or a 1:1 mix of MEK and toluene or xylene. Damaged, spotted or smeared parts of building and equipment shall be repaired and cleaned by the contractor. Remove foreign matter from finished coating surfaces.

6. AVAILABILITY AND COST

Availability: ACCOGUARD Systems are available through licensed applicators throughout the United States and internationally.

Cost: Installed costs vary due to system type, project size and regional considerations. Budget quotations are available upon request.

7. WARRANTY

Joint manufacturer/applicator guarantee of the installed system is available—contact manufacturer for details. A sample guarantee document including all limitations is also available upon request.

The information and data contained herein are believed to be accurate and reliable. Specifications and other information contained herein supersedes all previously printed material and are subject to change without notice.

All goods sold by seller are warranted to be free from defects in material and workmanship.

The foregoing warranty is in lieu of and excludes all other warranties not expressly set forth herein, whether express or implied by operation of law or otherwise including but not limited to any implied warranties of merchantability or fitness.

Seller shall not be liable for incidental or consequential losses, damages or expenses, directly or indirectly arising from the sale, handling or use of the goods, or from any other cause relating thereto, and seller's liability hereunder in any case is expressly limited to the replacement (in the form originally shipped) of goods not complying with this agreement or at seller's election, to the repayment of, or crediting buyer with, an amount equal to the purchase price of such goods, whether such claims are for breach of warranty or negligence.

Any claim by buyer with reference to the goods sold hereunder for any cause shall be deemed waived by buyer unless submitted to seller in writing within thirty (30) days from date buyer discovered or should

have discovered, any claimed breach.

Materials should be inspected and tested by purchaser prior to their use if product quality is subject to verification after shipment. Performance guarantees are normally supplied by the applicator.

8. MAINTENANCE

The coatings will provide years of continued service if good house-keeping procedures are followed. If damage should occur, repairs are simple and may be performed by maintenance personnel. Damaged areas can be repaired by removing all damaged material, re-priming and the full material thickness replaced. Where a regular maintenance and cleaning program is required, surfaces may be washed with commercial detergents or steam cleaned. All blades on snow removal equipment must be guarded with a ski device at each end of blade to protect surface from contact damage.

9. TECHNICAL SERVICES

Factory trained representatives are established in principal cities and markets throughout the continental United States, Canada and internationally. Factory personnel are available for assistance at any time.

10. FILING SYSTEMS

Electronic SPEC-DATA®
SPEC-DATA® II
Sweet's Architectural File
Sweet's Industrial Construction File
Literature available upon request from the manufacturer.



AMERICAN COLLOID COMPANY
CONSTRUCTION COATINGS DIVISION

TABLE 1
TYPICAL PRODUCT PROPERTIES OF WET LDC 5550

PROPERTY	STANDARD	RESULTS
Specific Gravity	ASTM D70	1.21
Packaged Weight (5 gal container).	N/A	52 lbs.
Nonvolatile Content (total solids) by weight	ASTM D1353 18 hrs. at 200°F (93.3°C)	77% min.
Viscosity	Brookfield RVF at 20 rpm 77°F (25°C)	1,000-1,500 cps
Cure Time	ASTM D1640 77°F (25°C) 50% RH	30 mil Film Dry to Touch: 6 hrs. Dry to Complete: 24 hrs. max.
Solvent Odor	ASTM D1296	Aliphatic or aromatic ester

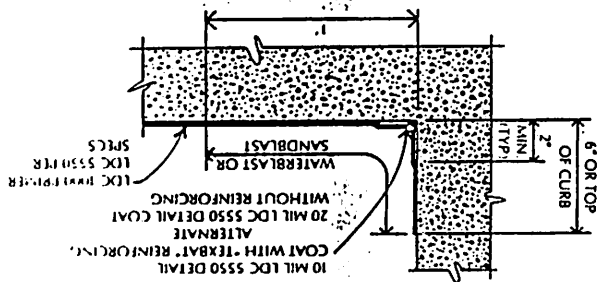
TABLE 2
PERFORMANCE REQUIREMENTS OF CURED FILM
LDC 5550

PHYSICAL PROPERTY	RESULTS	ASTM TEST METHOD IF APPLICABLE
Tensile Strength Min.	2800 psi (min.)	D412
Elongation at Break	350 (min.)	D412
Permanent Set at Break	10%	D412
Hardness	75 to 80 Shore A	D2240
Tear Resistance	250 lbs.	D1004
Abrasion	15 mg. loss	C501 Taber Abrasion 1000 Rev. with 1000 gm/wheel psig CS-17 Wheels
Adhesion to Substrate	500 psi (min.) (failure in substrate)	D4541
Weather Stability	Maintains Heat/Cold Flexibility -40°F to 180°F	

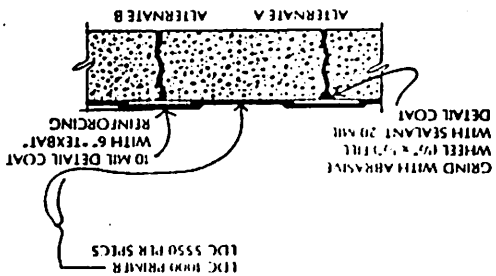
AMERICAN COLLOID COMPANY
CONSTRUCTION COATINGS DIVISION



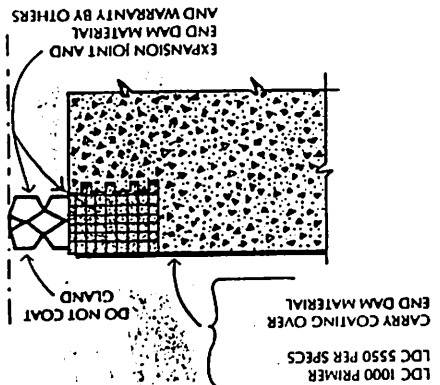
DETAIL AT WALLS, COLUMNS AND CURBS



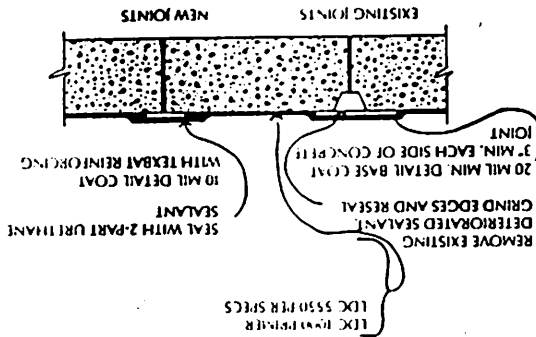
DETAIL AT CRACKS GREATER THAN 1/16"



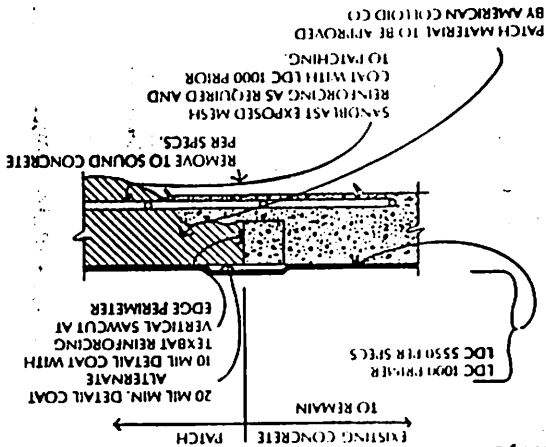
DETAIL AT EXPANSION/SEISMIC JOINT



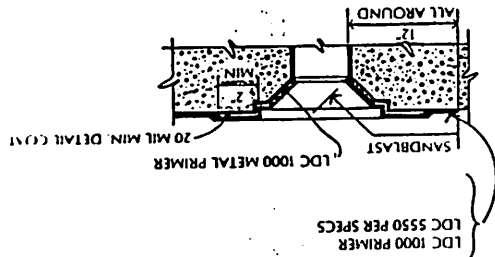
DETAIL AT CONSTRUCTION JOINTS



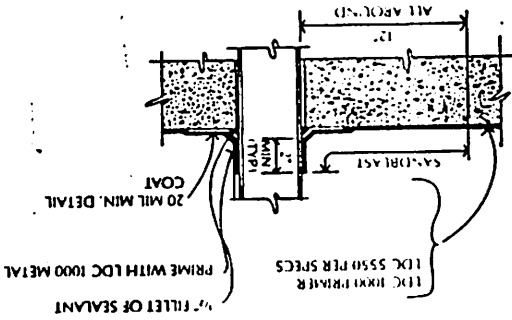
DETAIL AT PATCH PERIMETER



DETAIL AT DECK DRAINS



DETAIL AT PIPE OR OTHER METAL PROJECTIONS



PROJECT

COLLIN COUNTY JUSTICE CENTER
 BUILDING PACKAGE
 CONTRACT #92-02-035
 SPECIFICATION TITLE:
HYDRAULIC MATERIALS LIFT

DESCRIPTION:
SHOP DRAWINGS & SPECS.

MANUFACTURER:
AUTOQUIP

SUBMITTAL NUMBER
14550 A - 1

SECTION NUMBER
 SUBMITTAL TYPE:
 A-SHOP DRAWING
 B-PRODUCT DATA
 C-SAMPLES
 D-PROJECT INFORMATION
 E-CLOSEOUT INFORMATION
 SEQUENCE NUMBER
 RESUBMITTAL CHARACTER

RECEIVED
 JAN 22 1993

ROUTING SEQUENCE	CHECKED BY	DATE RECD	DATE SENT	NUMBER COPIES	ACTION TAKEN
PRIME CONTRACTOR	SA	1/18/93	1/20/93	5 EA.	B
CONSTRUCTION MANAGER	OC	1/22/93	2/4/93	5 ea	See Remarks Below
ARCHITECT	RM	2/4/93	2/4/93	4	A
CONSTRUCTION MANAGER	OC	2/16/93	2/17/93	3	See Remarks Above
PRIME CONTRACTOR	SA	2/17/93	2/18/93	COVER SHEET TO EA BELOW	
CONSTRUCTION MANAGER					
OWNER					
ARCHITECT					
ON SITE					

ACTION LEGEND:

(Indicate in ACTION TAKEN column above)

- A - APPROVED
- B - APPROVED AS NOTED
- C - REVISE AND RESUBMIT
 - 1 See comments.
 - 2 Wrong form used.
 - 3 Wrong section number
 - 4 Wrong sequence number.
 - 5 Wrong resubmittal suffix.
 - 6 No reproducible submitted.
- 7 No Contractor approval stamp.
- 8 not enough information
- D - NOT APPROVED
- E - NO ACTION REQUIRED
 - 1 Submittal not required.
 - 2 Project and closeout information.

REMARKS

REMARKS

SUBMITTAL NO. 145.50 A-1
 REVIEWED BY FLUOR DANIEL FOR GENERAL
 CONFORMANCE TO THE CONTRACT DOCUMENTS

BY: OC DATE: 2/1/93

FEB 17 1993
 CHARTER BUILDERS, INC.

