

# CITY OF MELISSA ILA ROAD

## County Road – 362:

ROCK TO ASPHALT UPGRADE: 20 ft. Surface width

EXTENT: ( From CR – 340 east to creek ) .36 Mile

DISTANCE TOTALLY WITHIN COLLIN COUNTY: .04 Mile

DISTANCE OF MUTUAL BOUNDARY: .32 Mile

( One – Half Materials Cost Only for City of Melissa )

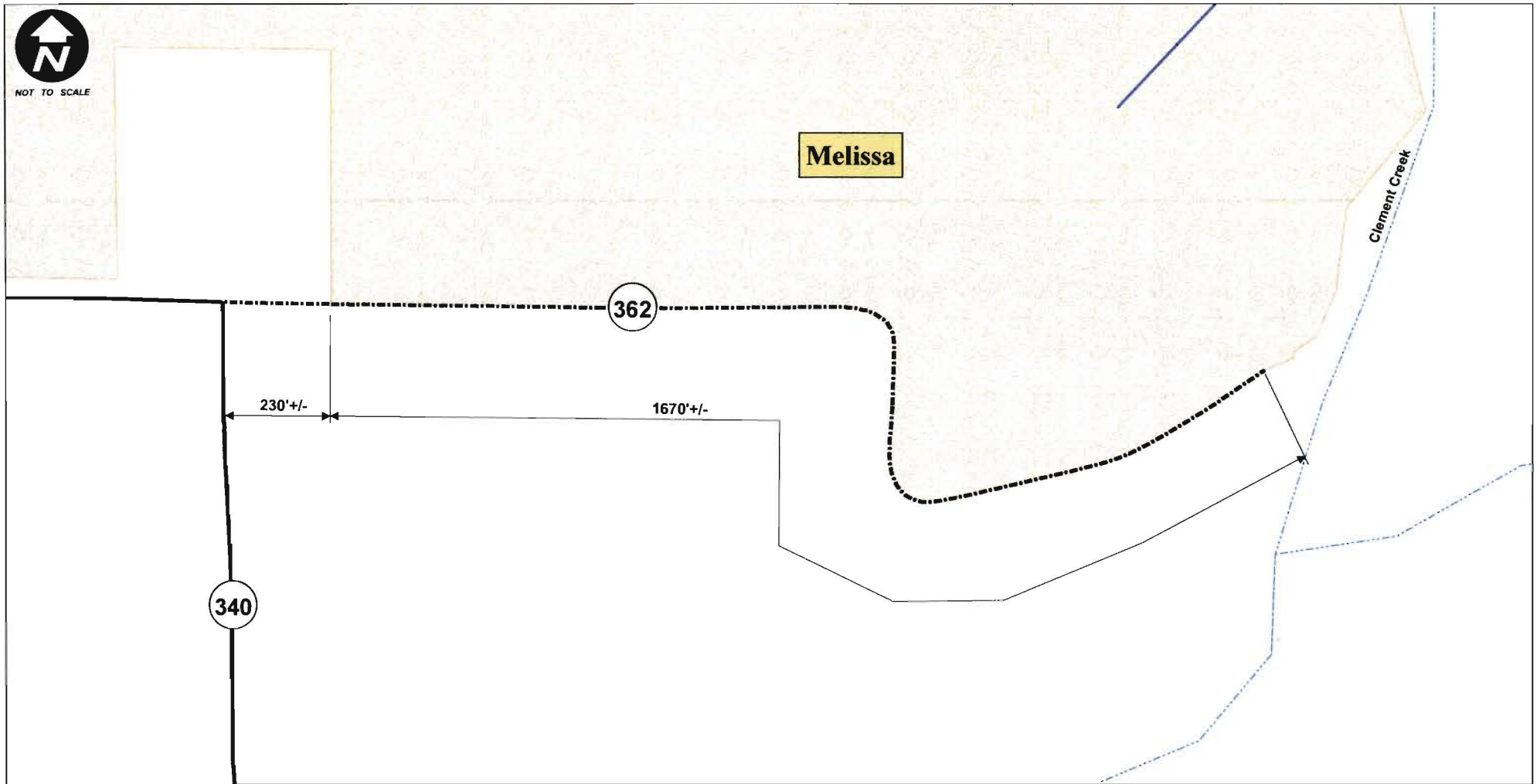
COST TO UPGRADE FOR CITY OF MELISSA: \$10,475.52

PROJECTED START DATE: March 2013

PROJECTED COMPLETION DATE: August 2014



NOT TO SCALE



### CR 362 MUTUAL BOUNDARY ROAD 01/31/12

CITY COST PARTICIPATION ROAD CITY AND COUNTY MAINTENANCE

LEGEND:	
ASPHALT ROAD	—————
ROCK ROAD	- - - - -
MELISSA CITY LIMITS	Yellow shaded area