

# CITY OF MELISSA ILA ROAD

## COUNTY ROAD – 413:

ROCK TO ASPHALT UPGRADE: 20 ft. Surface Width

EXTENT: ( From CR – 415 to end of rock section ) 1.41 Mile

DISTANCE TOTALLY WITHIN COLLIN COUNTY: .51 Mile

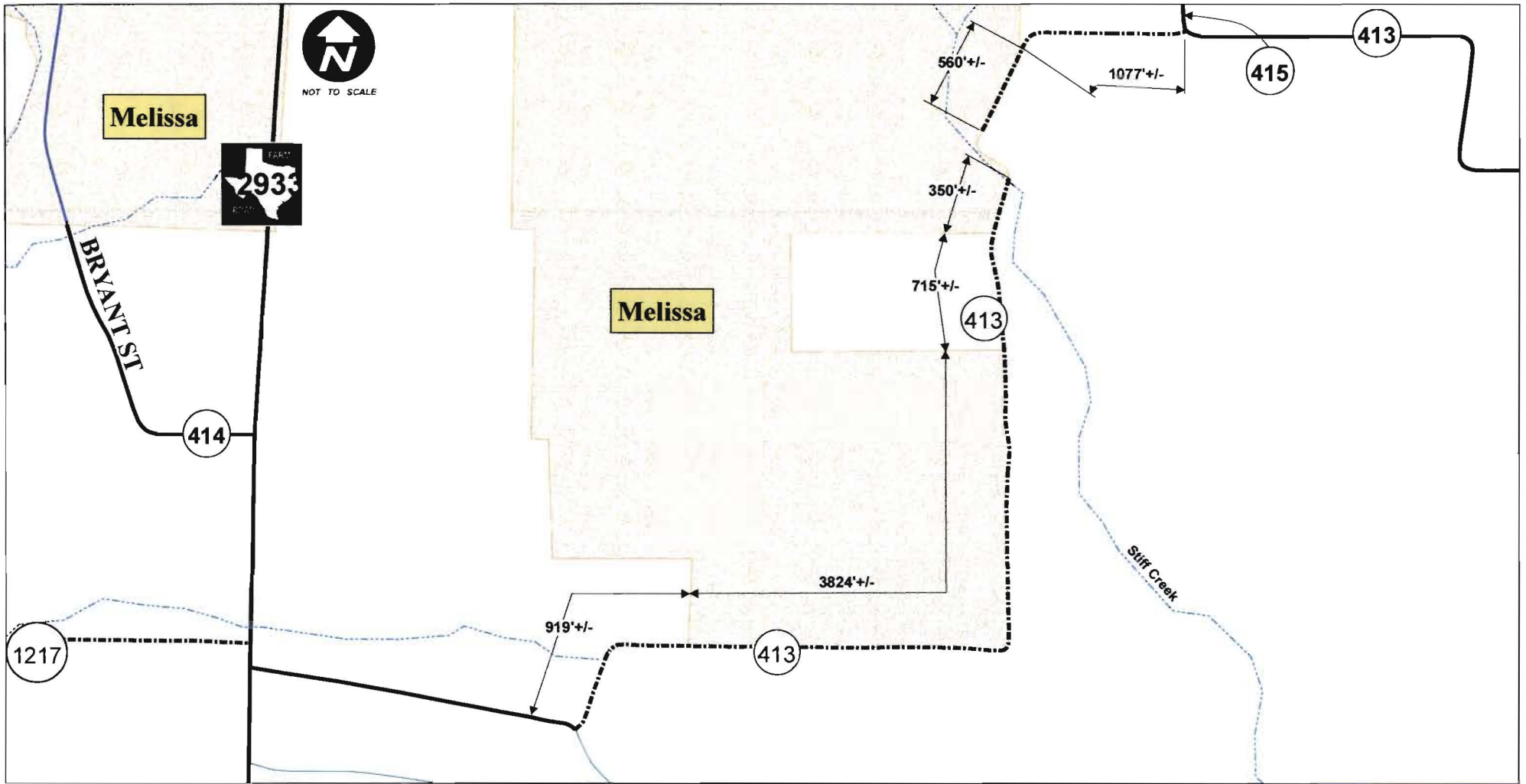
DISTANCE OF MUTUAL BOUNDARY: .90 Mile

( One – Half Materials Cost Only for City of Melissa )

COST TO UPGRADE FOR THE CITY OF MELISSA: \$29,462.40

PROJECTED START DATE: November 2013

PROJECTED COMPLETION DATE: September 2014



**CR 413 WEST MUTUAL BOUNDARY ROAD 01/26/12**  
 CITY COST PARTICIPATION ROAD CITY AND COUNTY MAINTENANCE

LEGEND:	
CITY ROAD	
ASPHALT ROAD	
ROCK ROAD	
MELISSA CITY LIMITS	

