

CITY OF MELISSA ILA ROAD

COUNTY ROAD – 418:

ROCK TO ASPHALT UPGRADE: 20 ft. Surface Width

EXTENT: (From CR – 421 south to concrete street) 1.19 Miles
(Includes Anna, Mellissa, and Collin County sections)

TOTAL DISTANCE THAT LIES WITHIN MELISSA: .47 Mile

DISTANCE OF MELLISA'S MUTUAL BOUNDARY: .15 Mile
(One – Half Materials Cost Only)

DISTANCE TOTALLY WITHIN CITY OF MELISSA: .32 Mile
(Total Equipment, Labor and Materials Costs)

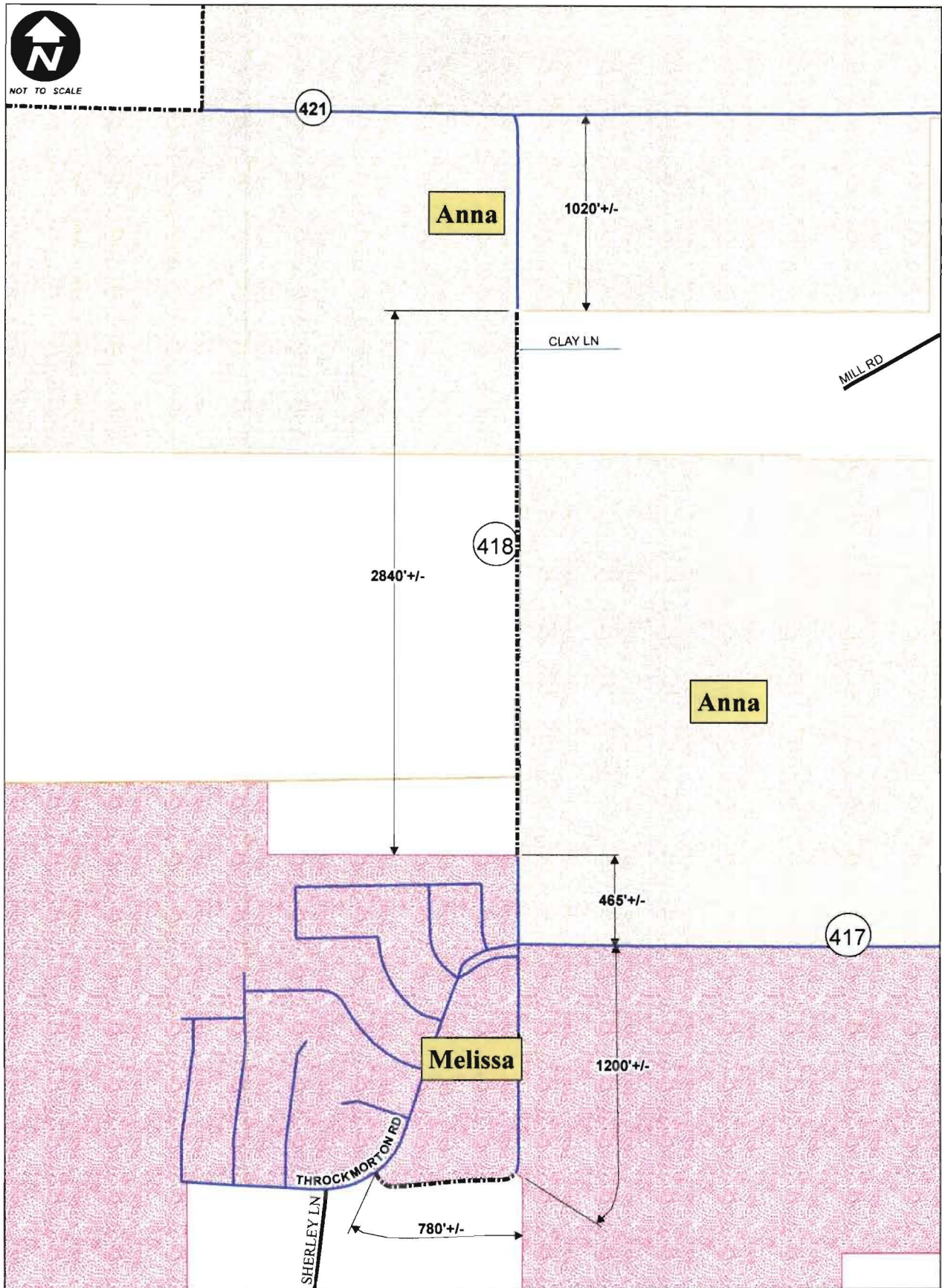
COST TO UPGRADE FOR CITY OF MELISSA: \$92,262.72

PROJECTED START DATE: April 2013

PROJECTED COMPLETION DATE: September 2013



NOT TO SCALE



CR 418 MUTUAL BOUNDARY ROAD 01/26/12

CITY COST PARTICIPATION ROAD CITY AND COUNTY MAINTENANCE

LEGEND:	
CITY ROAD	
ASPHALT ROAD	
ROCK ROAD	
MELISSA CITY LIMITS	