

# Project Access–Collin County

Annual report to  
Collin County Commissioners Court and  
Collin County HealthCare Foundation  
May 2012

# Physicians Recruited vs. Goal

- ▶ **Twelve month Goal** 100 Physicians
- ▶ Six month Actual 71 Physicians
- ▶ Type of Physicians 23 Primary Care  
48 Specialists
- ▶ **Slots available Goal** 625 Patient Slots--Total
- ▶ Slots now available (annual) 619 Patient Slots--Total  
345 primary care Pt's  
274 specialty care Pt's
  
- ▶ Current Specialty Care being provided: Urology, Optometry, Ophthalmology, Otolaryngology, Allergy/Asthma/Immunology, OB/GYN, Rheumatology, Orthopedic Surgery & Physical Medicine, Bariatric and General Surgery, Podiatric Medicine and Surgery, Endocrinology, Cardiology, Plastic Surgery, Gastroenterology, and limited Oncology. Specialists recruited and provided when needed.

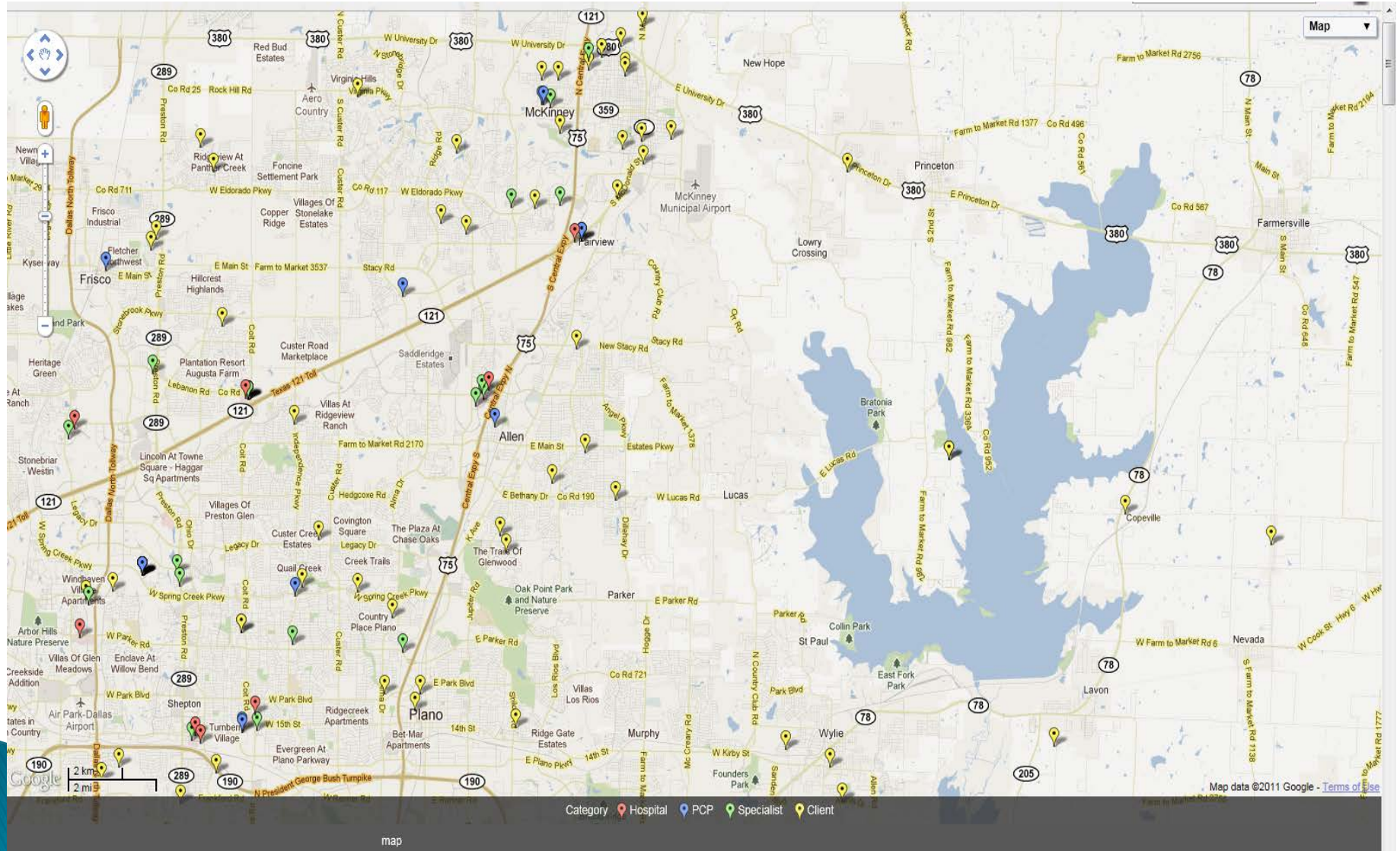
# Hospitals Recruited and Paid and the original Goal

- ▶ **Twelve Month Goal** 8 hospitals
- ▶ Six month Actual 8 hospitals
- ▶ Pt Slots available As needed
- ▶ Pts Referred to hospitals 8
- ▶ Hospitals: Baylor Regional Hospital Plano, Baylor Hospital Frisco, Baylor Heart Hospital, THR Presbyterian Hospital Plano, THR Presbyterian Hospital Allen, HCA Medical Center McKinney, HCA Medical Center Plano, Centennial Hospital Frisco.

# PACC Patient Totals—6 months

- ▶ Referred from County 71
- ▶ Referred from Physicians 13
- ▶ Referred from Hospitals 2
- ▶ Patients subsequently receiving insurance or increase in income 27
- ▶ Patients not meeting guidelines 10 referred (est.)

# Map of Collin County Showing Physicians' Offices, Hospitals and Patient Residences



# Patient Care Values

- ▶ With 75% of the physician 1500 forms reporting:  
\$66,500 in care recorded    \$88,600 estimated
- ▶ Pharmacy Assistance Secured:    \$5,900
- ▶ All patients have been given a primary care physician.
- ▶ Patients have been given specialty care.
- ▶ Patients have received prescriptions, diagnostic testing, and lab work, paid by PACC or donated.
- ▶ Hospitals have accepted all patients referred to them for hospital care or diagnostics.

# PACC Assumptions

- ▶ The number of indigent patients using hospitals has been reduced drastically to less than 10% due to the fact that patients receive the care they need without using the hospitals.
  - ▶ PACC has expanded considerably beyond its initial pilot program with Village Healthcare.
  - ▶ PACC is on target for its one year goals by June 1, 2012, and has current resources to support an increase in patients over the next year.
- 