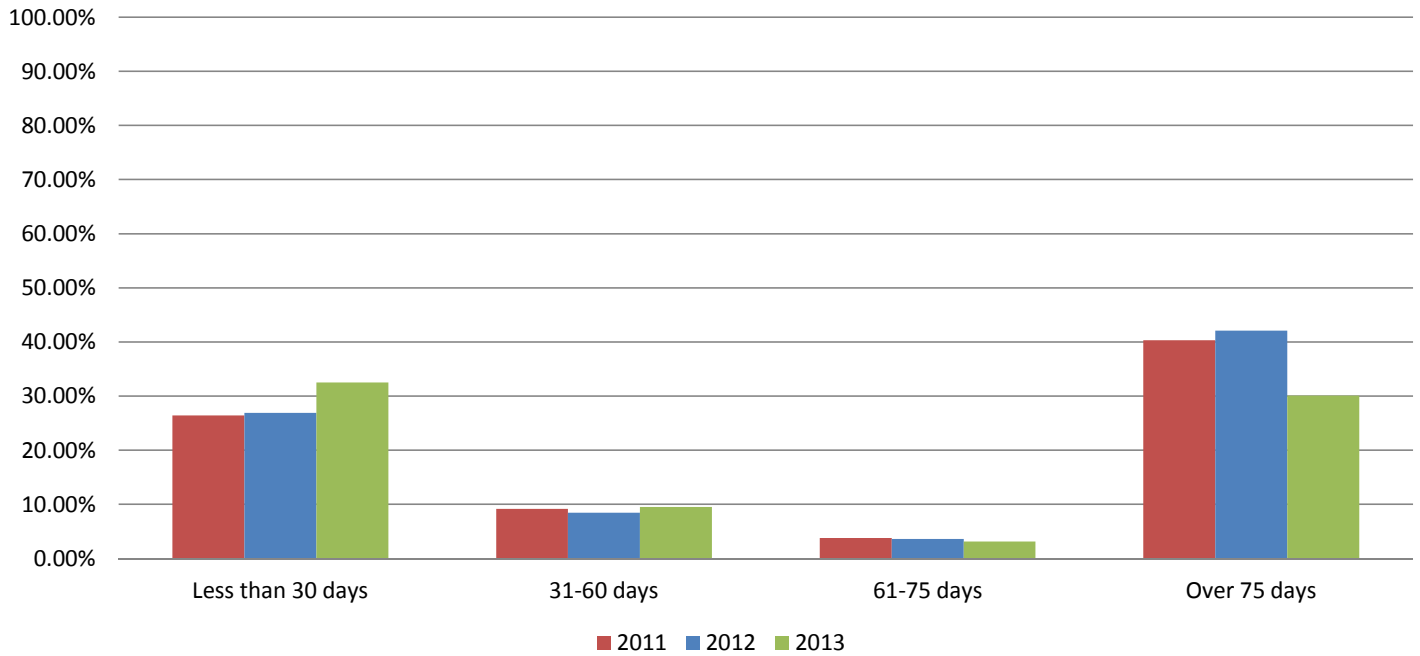
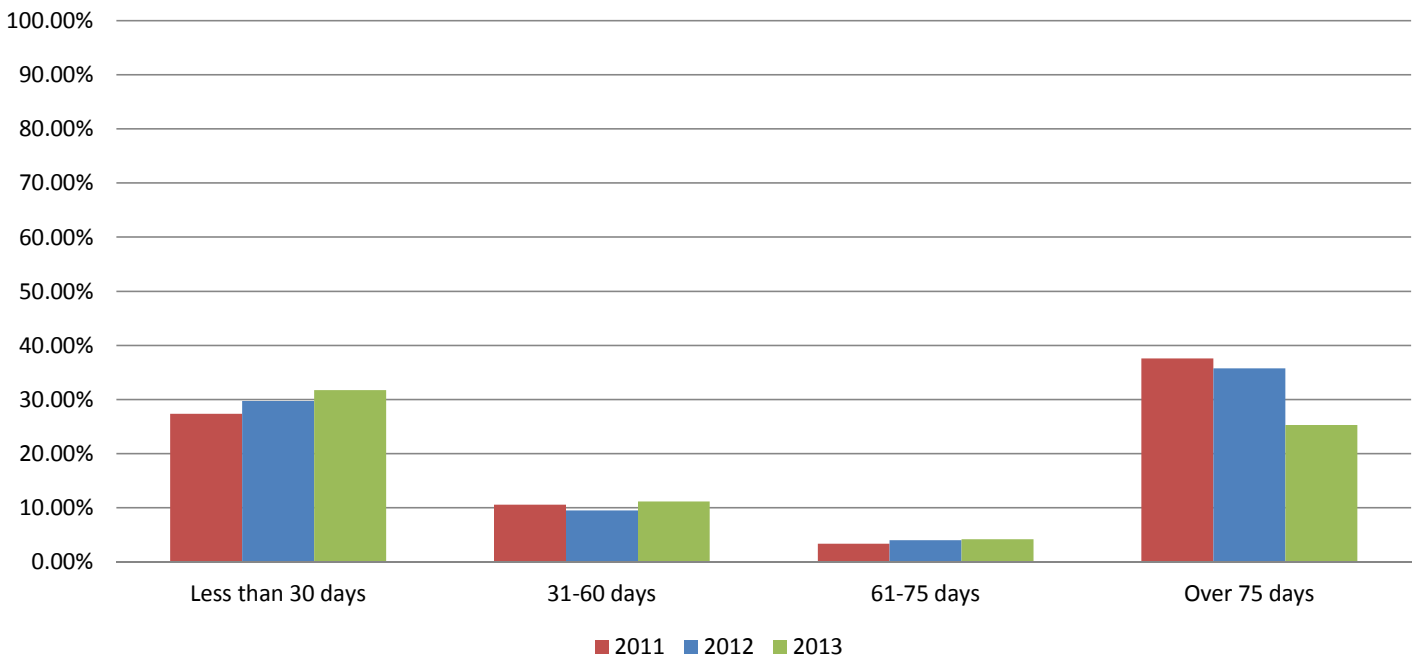


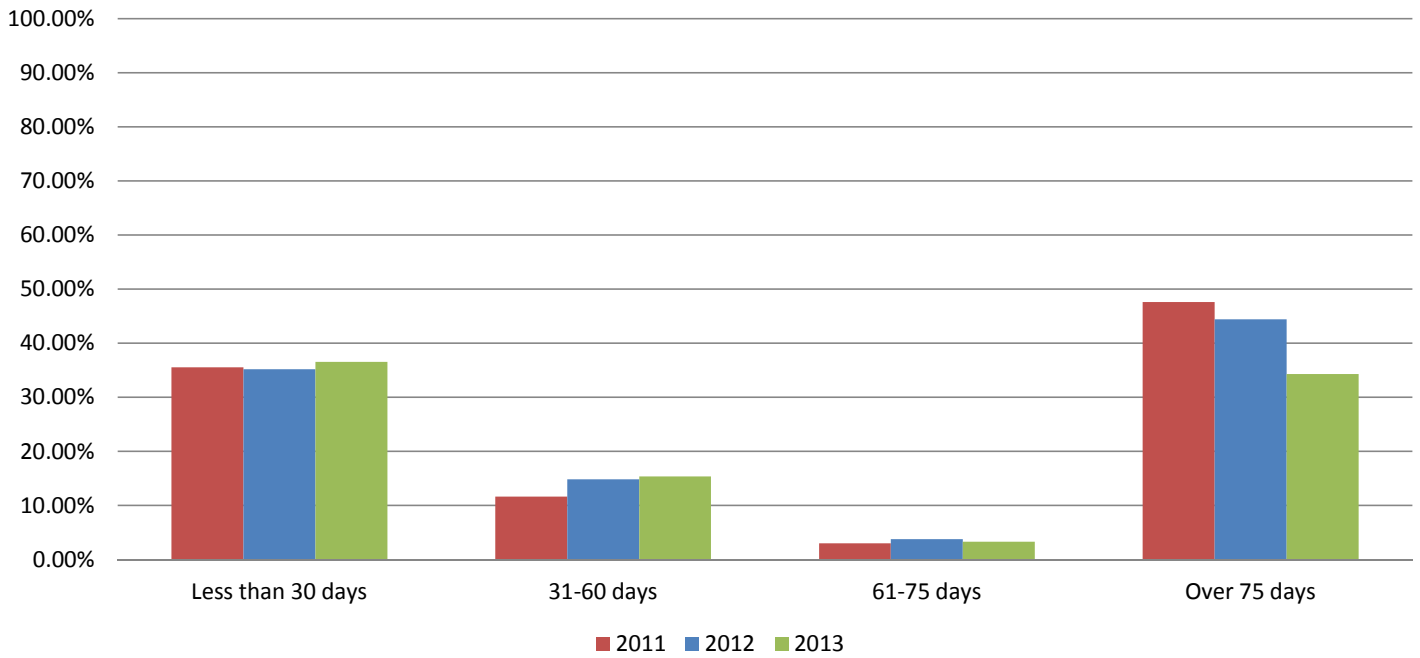
### JP1 Percent Collected - Traffic Cases Less Tolls



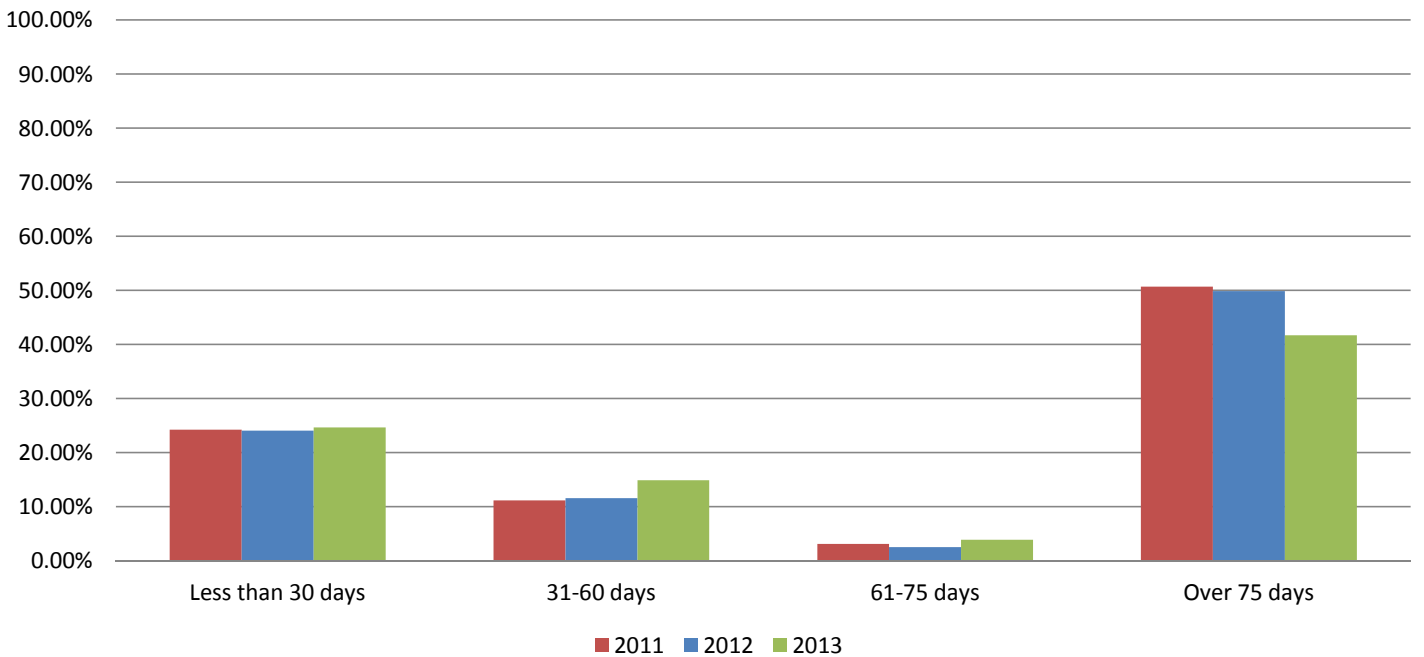
### JP2 Percent Collected - Traffic Cases Less Tolls



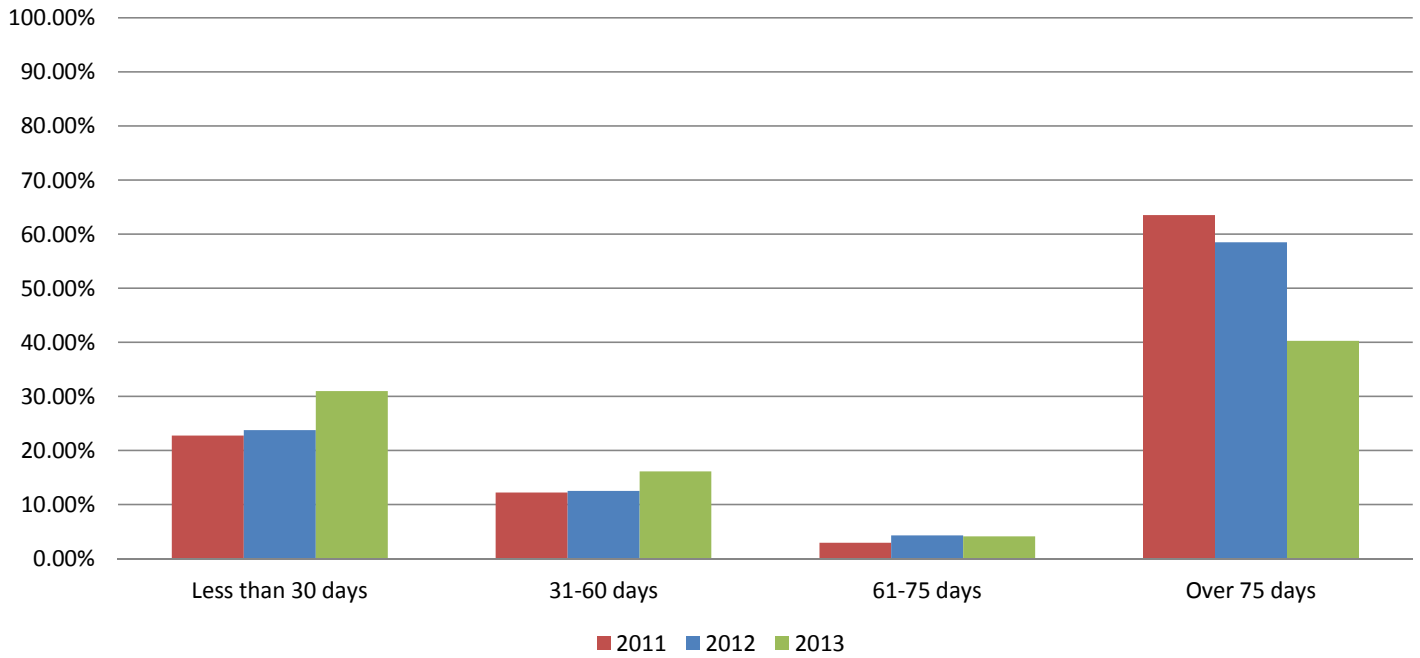
### JP3-1 Percent Collected - Traffic Cases Less Tolls



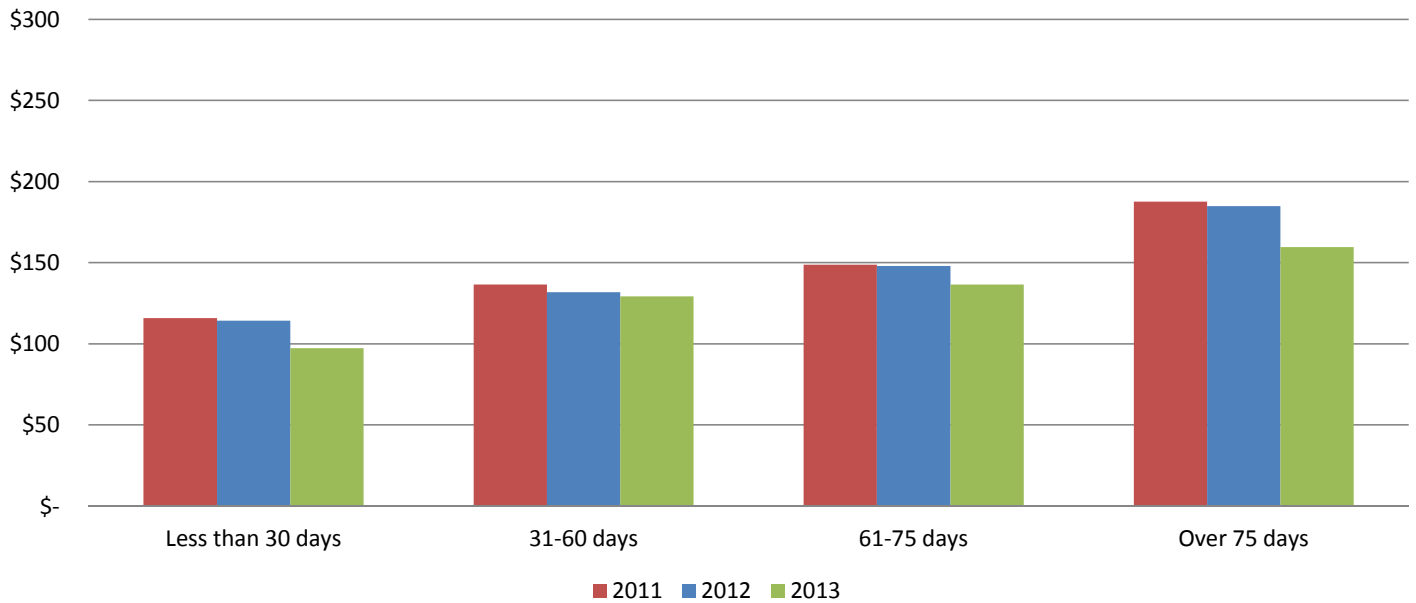
### JP3-2 Percent Collected - Traffic Cases Less Tolls



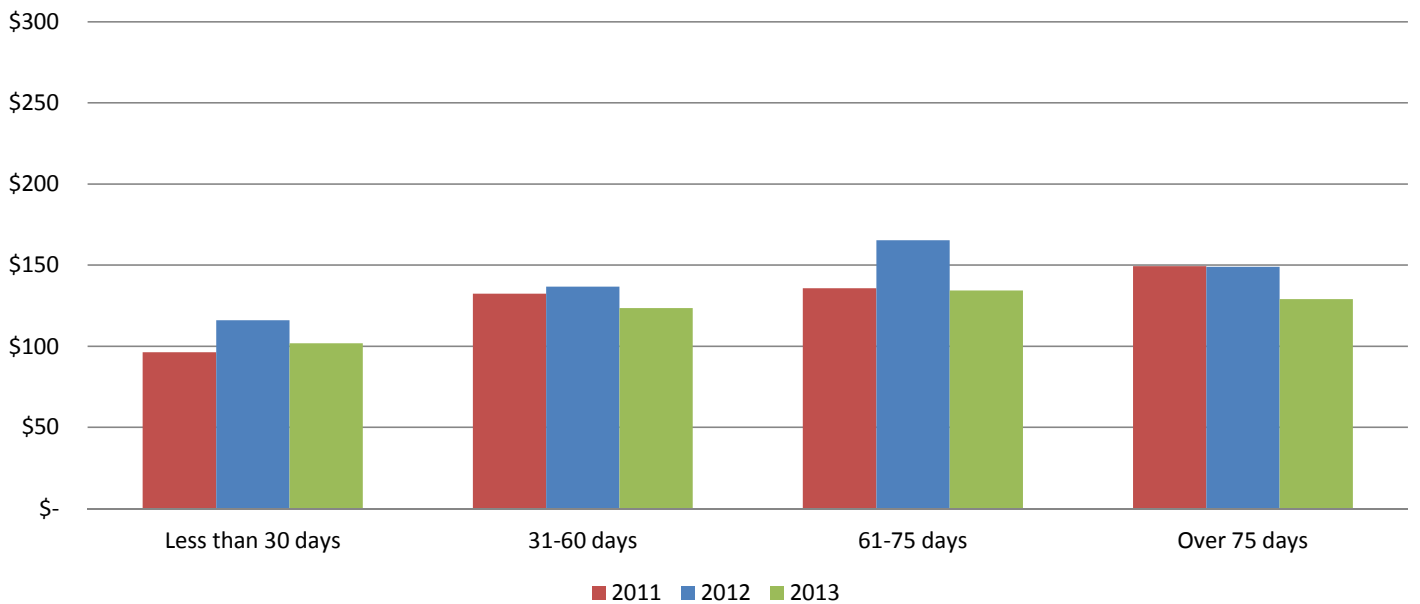
### JP4 Percent Collected - Traffic Cases Less Tolls



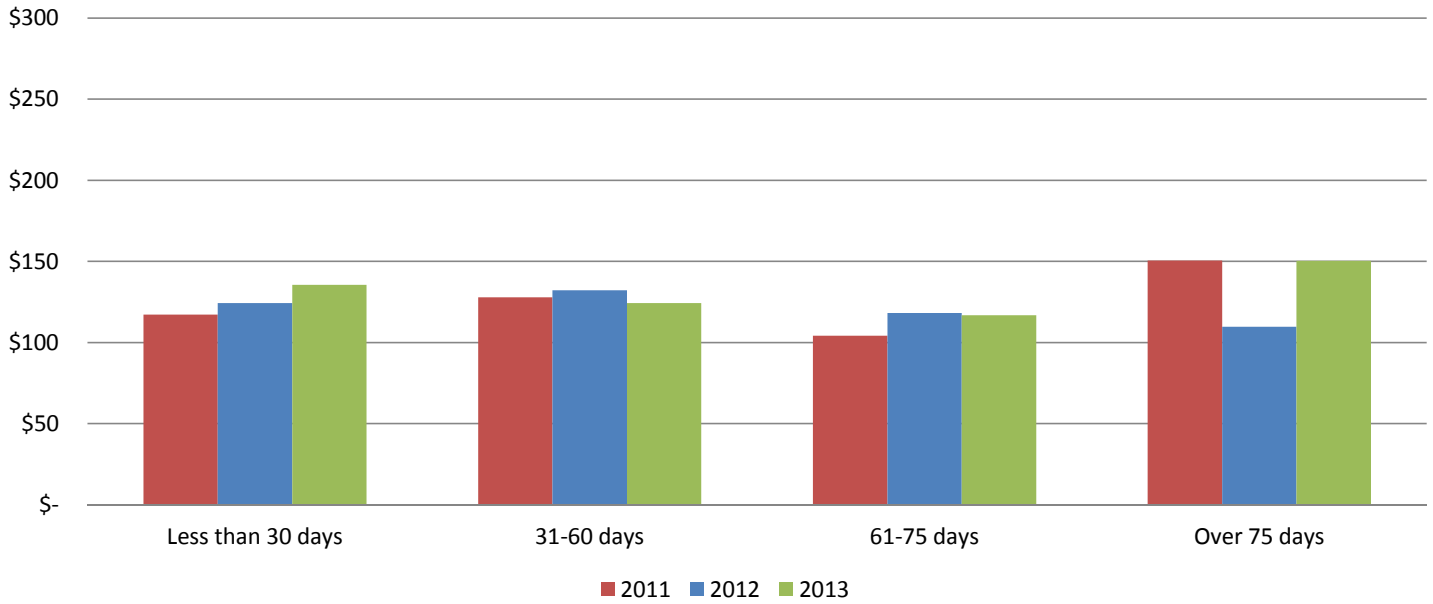
### JP1 Average Amount Collected (Not Including Credits) - Traffic Cases Less Tolls



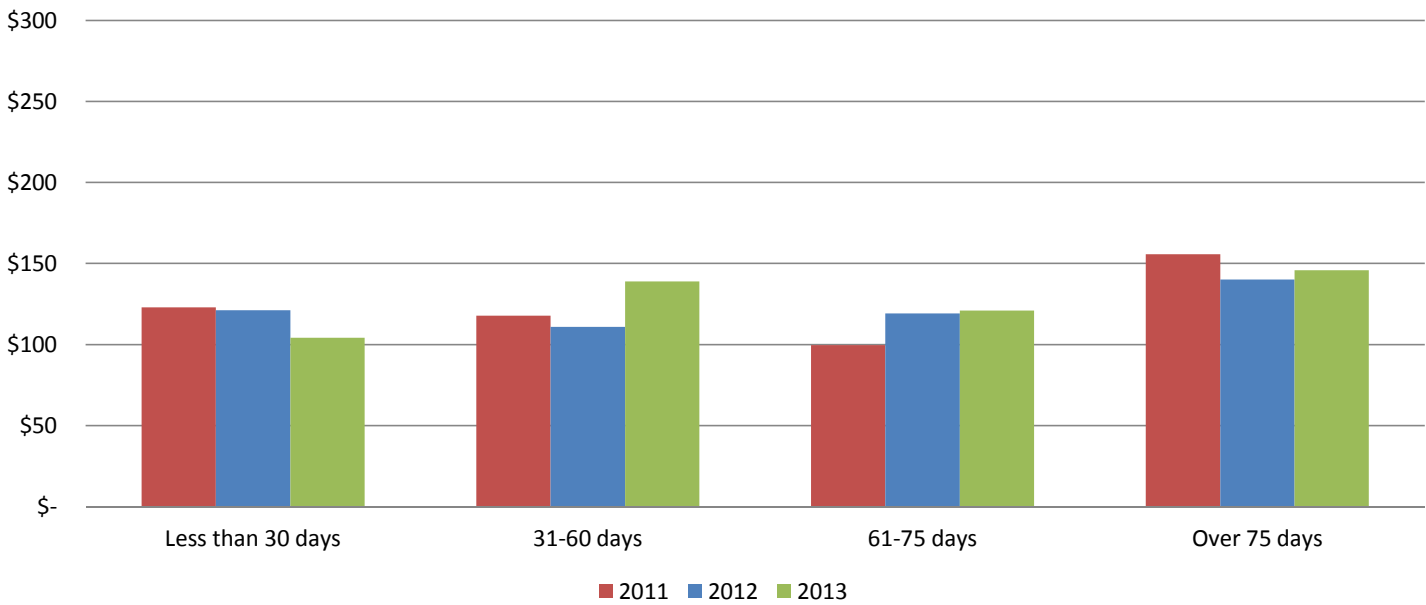
### JP2 Average Amount Collected (Not Including Credits) - Traffic Cases Less Tolls



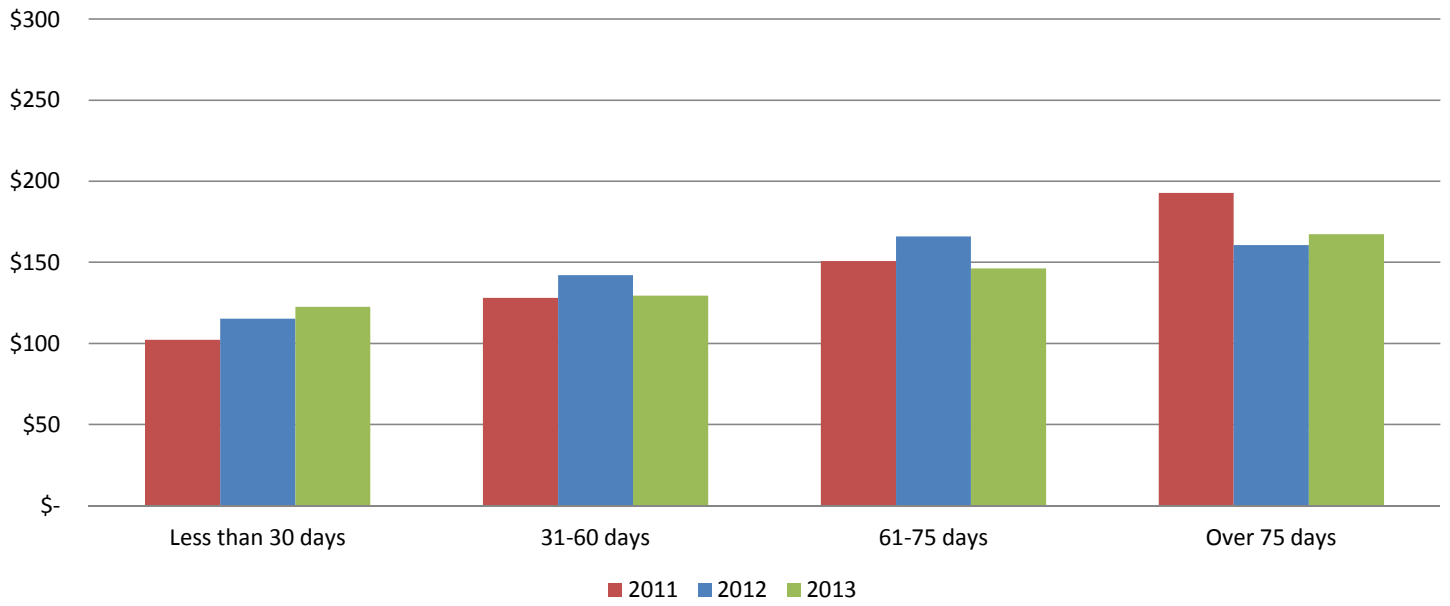
### JP3-1 Average Amount Collected (Not Including Credits) - Traffic Cases Less Tolls



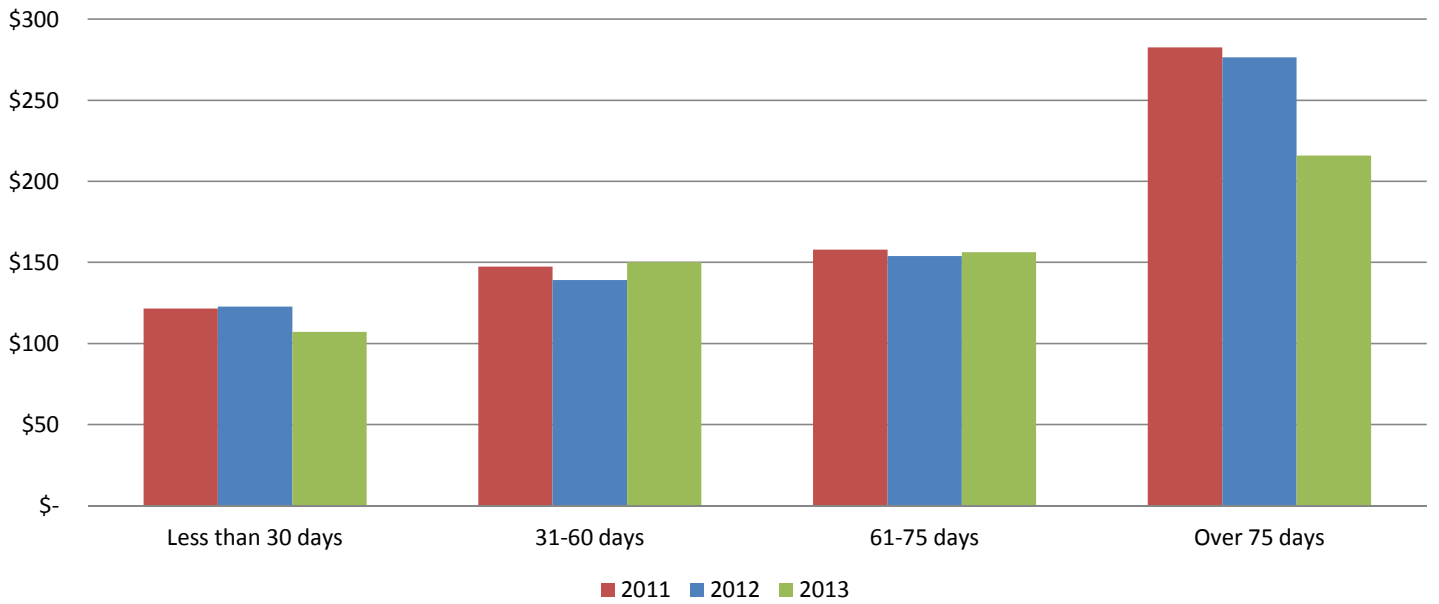
### JP3-2 Average Amount Collected (Not Including Credits) - Traffic Cases Less Tolls



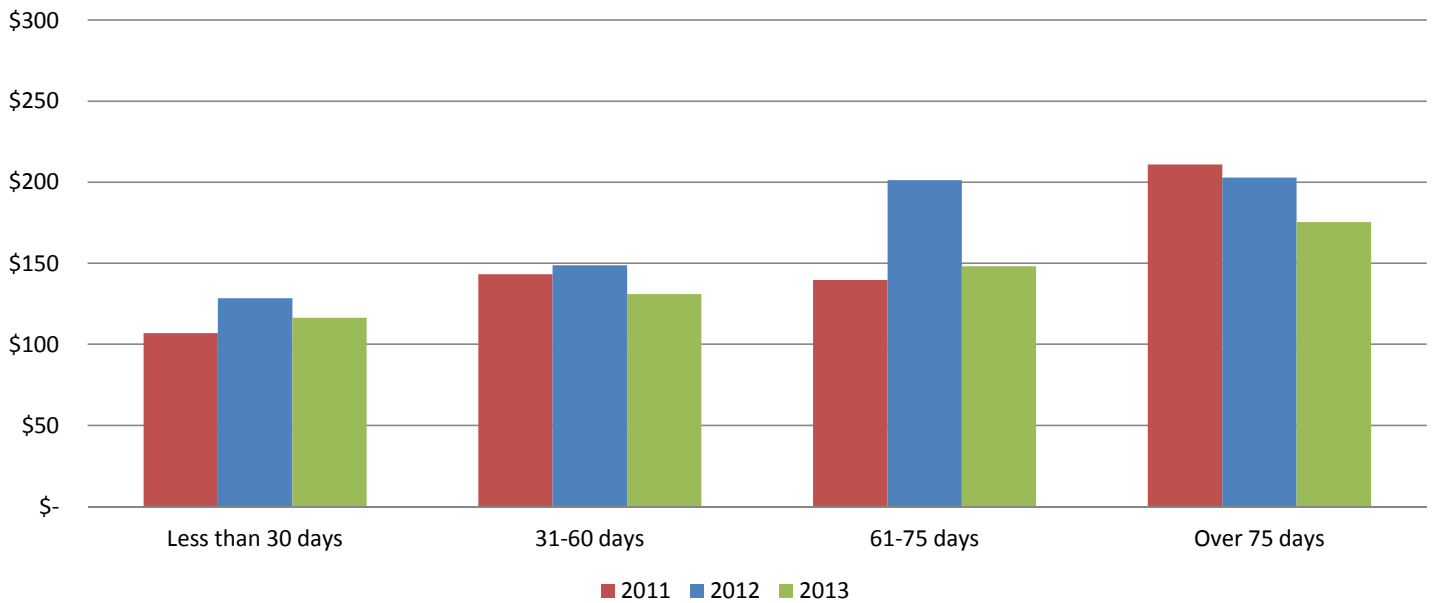
### JP4 Average Amount Collected (Not Including Credits) - Traffic Cases Less Tolls



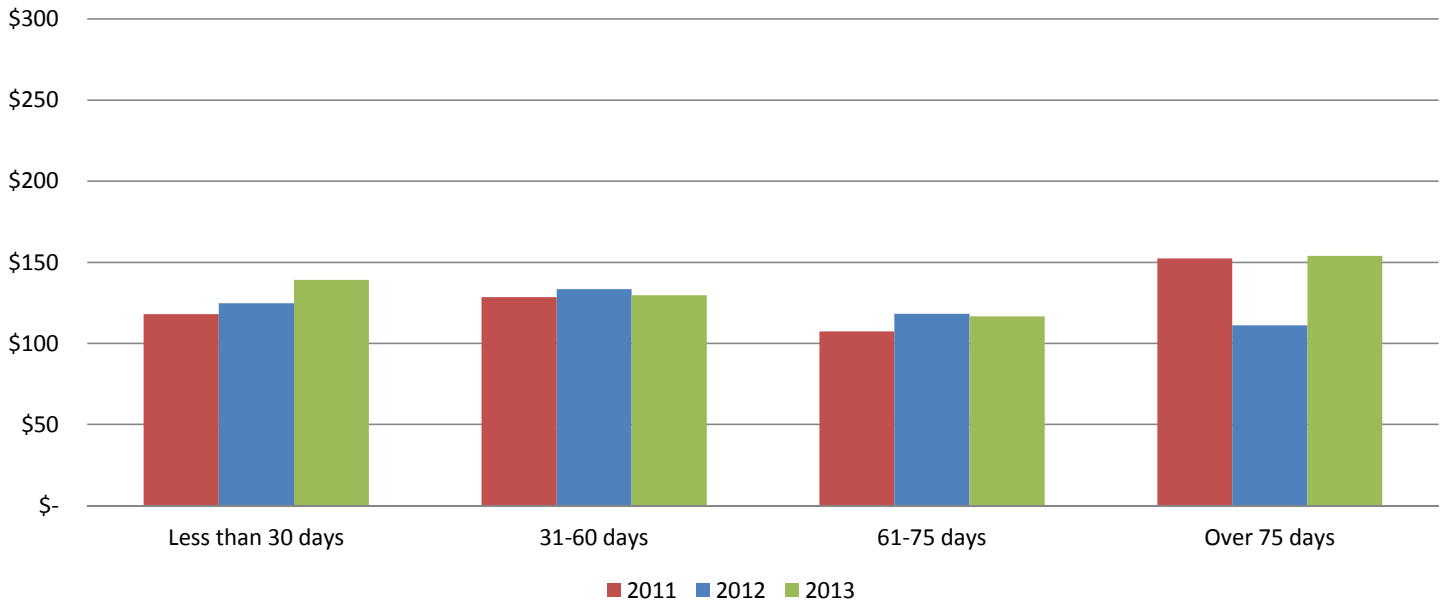
### JP1 Average Amount Collected (Including Credits) - Traffic Cases Less Tolls



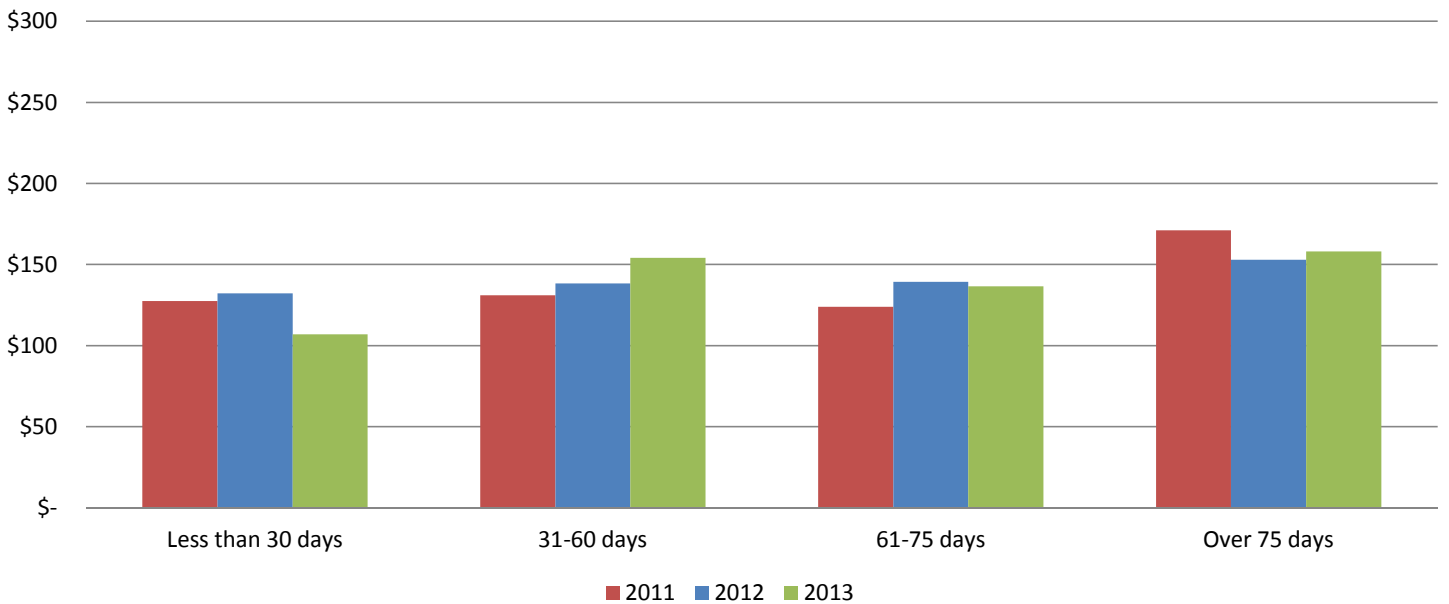
### JP2 Average Amount Collected (Including Credits) - Traffic Cases Less Tolls



### JP3-1 Average Amount Collected (Including Credits) - Traffic Cases Less Tolls



### JP3-2 Average Amount Collected (Including Credits) - Traffic Cases Less Tolls



### JP4 Average Amount Collected (Including Credits) - Traffic Cases Less Tolls

