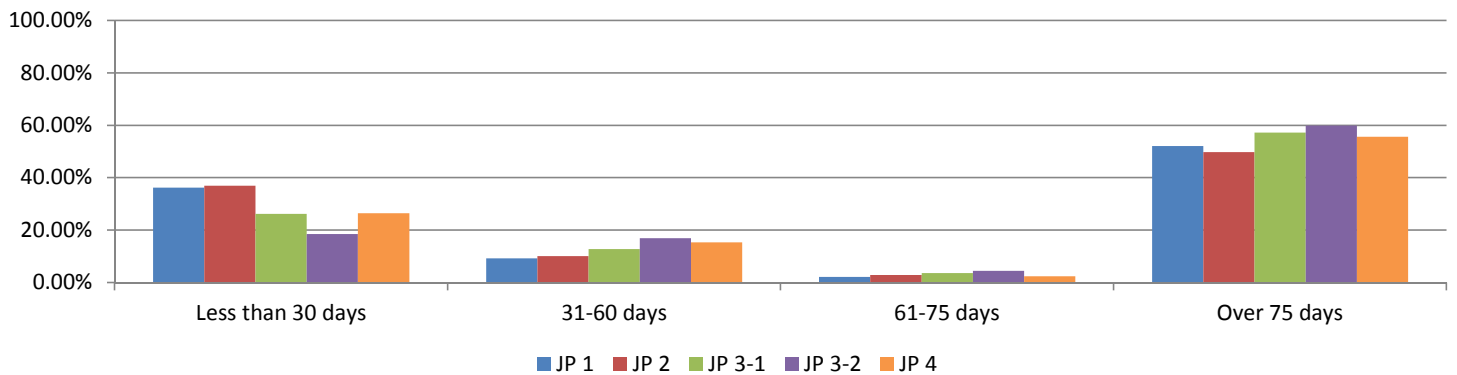


JP Stat Closure 10-14 Summary

2014 Traffic Cases

	# of Cases	# of Days	Avg # of Days	Less than 30 days	% Cases Closed	31-60 days	% Cases Closed	61-75 days	% Cases Closed	Over 75 days	% Cases Closed
JP 1											
TR	1,476	585,883	397	536	36.31%	137	9.28%	33	2.24%	770	52.17%
JP 2											
TR	745	201,514	270	276	37.05%	76	10.20%	22	2.95%	371	49.80%
JP 3-1											
TR	458	154,643	338	120	26.20%	59	12.88%	17	3.71%	262	57.21%
JP 3-2											
TR	571	142,245	249	106	18.56%	97	16.99%	26	4.55%	342	59.89%
JP 4											
TR	917	337,483	368	243	26.50%	141	15.38%	23	2.51%	510	55.62%

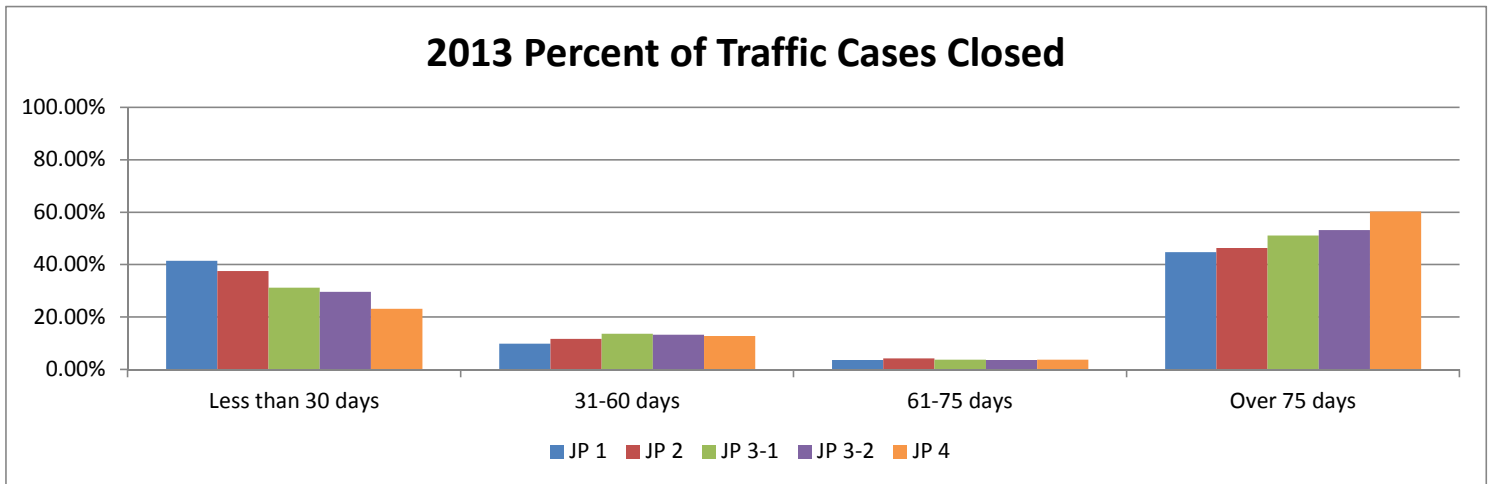
2014 YTD Percent of Traffic Cases Closed



JP Stat Closure 10-14 Summary

2013 Traffic Cases

	# of Cases	# of Days	Avg # of Days	Less than 30 days	% Cases Closed	31-60 days	% Cases Closed	61-75 days	% Cases Closed	Over 75 days	% Cases Closed
JP 1											
TR	7,179	1,372,957	191	2,983	41.55%	714	9.95%	261	3.64%	3221	44.87%
JP 2											
TR	3,763	642,898	171	1,413	37.55%	443	11.77%	162	4.31%	1745	46.37%
JP 3-1											
TR	2,066	473,317	229	646	31.27%	284	13.75%	79	3.82%	1057	51.16%
JP 3-2											
TR	3,055	529,588	173	907	29.69%	407	13.32%	113	3.70%	1628	53.29%
JP 4											
TR	5,749	1,790,848	312	1,333	23.19%	735	12.78%	217	3.77%	3464	60.25%

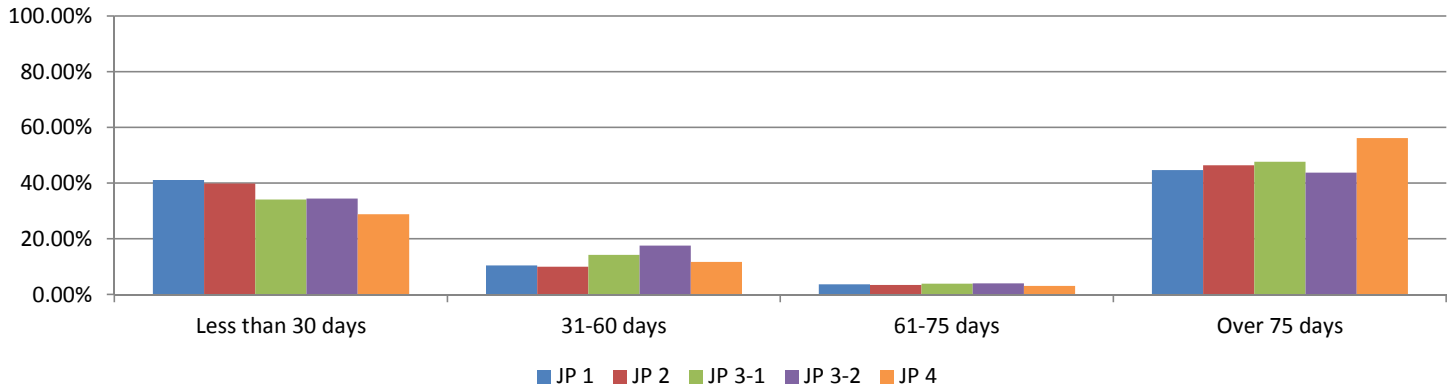


JP Stat Closure 10-14 Summary

2012 Traffic Cases

	# of Cases	# of Days	Avg # of Days	Less than 30 days	% Cases Closed	31-60 days	% Cases Closed	61-75 days	% Cases Closed	Over 75 days	% Cases Closed
JP 1											
TR	5,396	1,058,155	196	2,218	41.10%	567	10.51%	200	3.71%	2411	44.68%
JP 2											
TR	3,923	1,375,644	351	1,565	39.89%	396	10.09%	139	3.54%	1823	46.47%
JP 3-1											
TR	3,153	510,798	162	1,075	34.09%	449	14.24%	124	3.93%	1505	47.73%
JP 3-2											
TR	2,452	332,554	136	846	34.50%	433	17.66%	99	4.04%	1074	43.80%
JP 4											
TR	8,362	2,265,118	271	2,413	28.86%	986	11.79%	265	3.17%	4698	56.18%

2012 Percent of Traffic Cases Closed

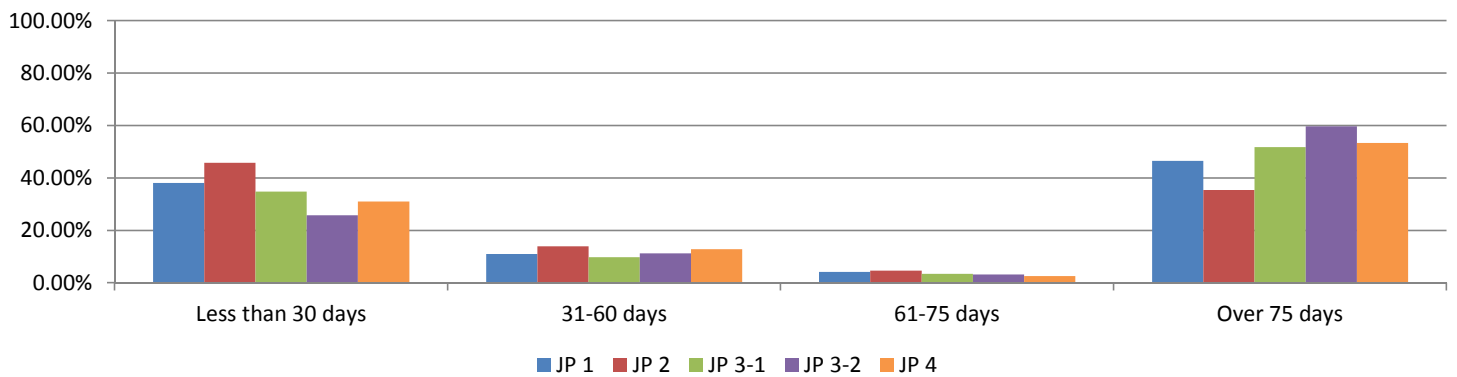


JP Stat Closure 10-14 Summary

2011 Traffic Cases

	# of Cases	# of Days	Avg # of Days	Less than 30 days	% Cases Closed	31-60 days	% Cases Closed	61-75 days	% Cases Closed	Over 75 days	% Cases Closed
JP 1											
TR	6,037	1,155,525	191	2,306	38.20%	667	11.05%	256	4.24%	2808	46.51%
JP 2											
TR	3,477	482,517	139	1,595	45.87%	486	13.98%	163	4.69%	1233	35.46%
JP 3-1											
TR	4,168	849,258	204	1,453	34.86%	408	9.79%	147	3.53%	2160	51.82%
JP 3-2											
TR	1,221	479,971	393	315	25.80%	138	11.30%	39	3.19%	729	59.71%
JP 4											
TR	8,300	3,103,497	374	2,578	31.06%	1064	12.82%	222	2.67%	4436	53.45%

2011 Percent of Traffic Cases Closed

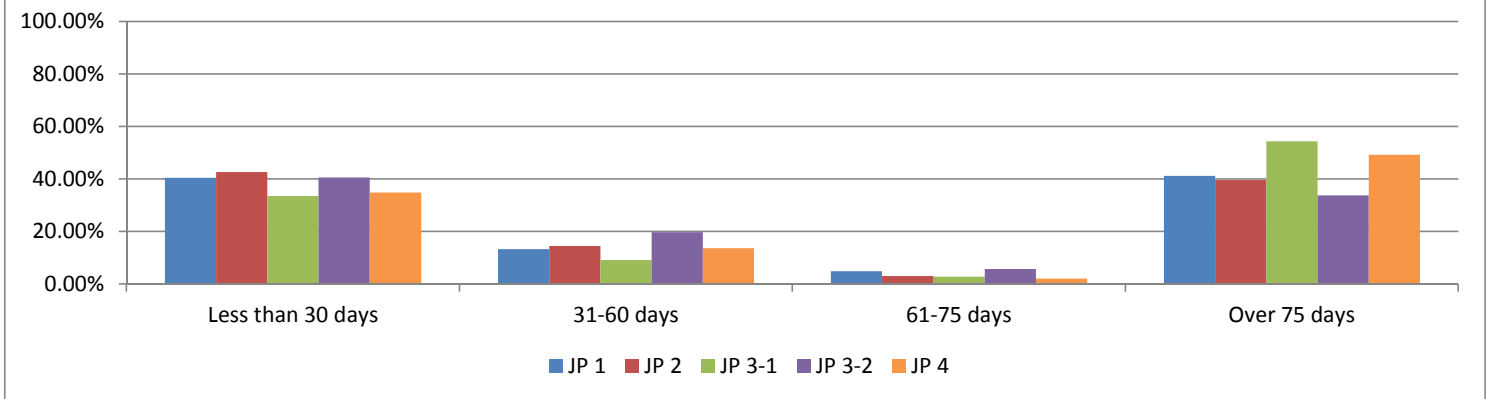


JP Stat Closure 10-14 Summary

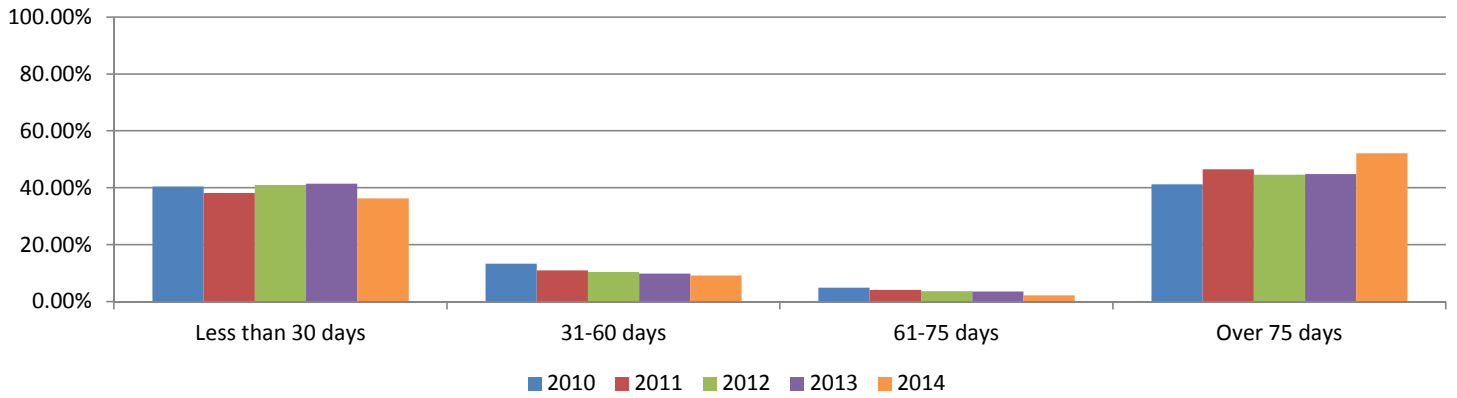
2010 Traffic Cases

	# of Cases	# of Days	Avg # of Days	Less than 30 days	% Cases Closed	31-60 days	% Cases Closed	61-75 days	% Cases Closed	Over 75 days	% Cases Closed
JP 1											
TR	1,399	240,778	172	566	40.46%	187	13.37%	69	4.93%	577	41.24%
JP 2											
TR	702	112,881	161	300	42.74%	102	14.53%	22	3.13%	278	39.60%
JP 3-1											
TR	623	137,786	221	209	33.55%	57	9.15%	18	2.89%	339	54.41%
JP 3-2											
TR	207	29,027	140	84	40.58%	41	19.81%	12	5.80%	70	33.82%
JP 4											
TR	1,558	367,279	236	544	34.92%	214	13.74%	32	2.05%	768	49.29%

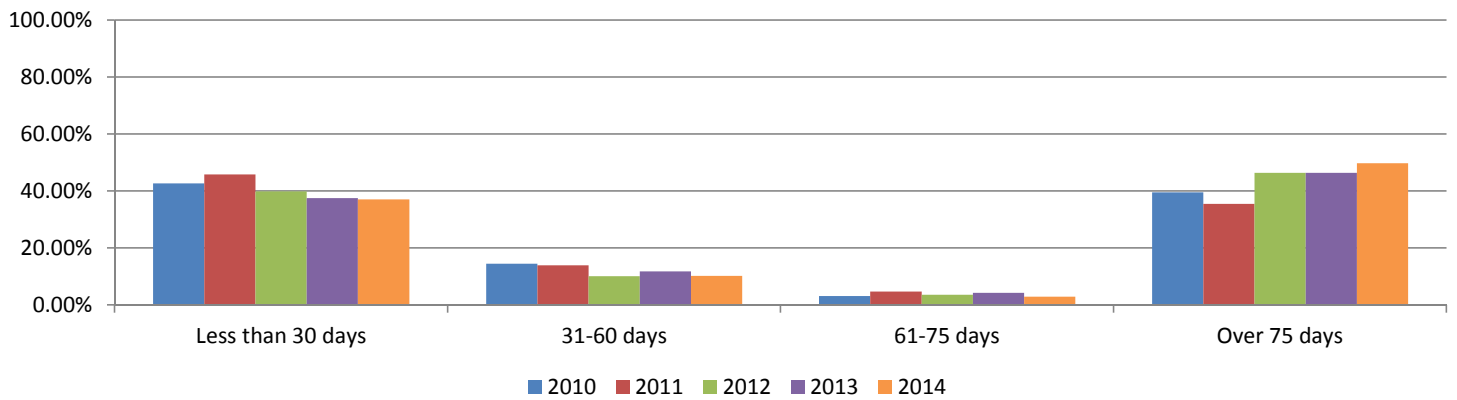
2010 Percent of Traffic Cases Closed



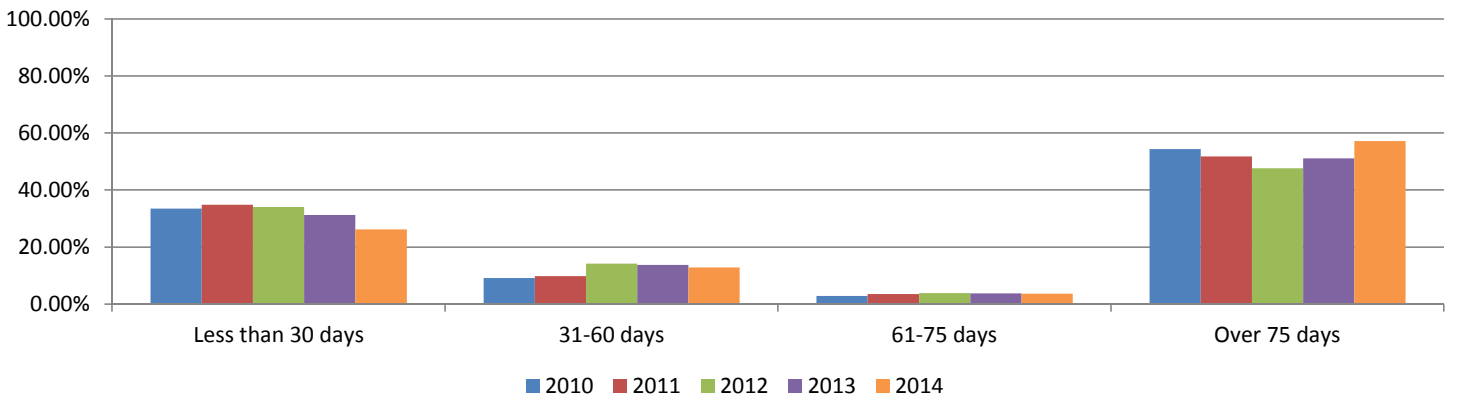
JP1 Percent of Traffic Cases Closed



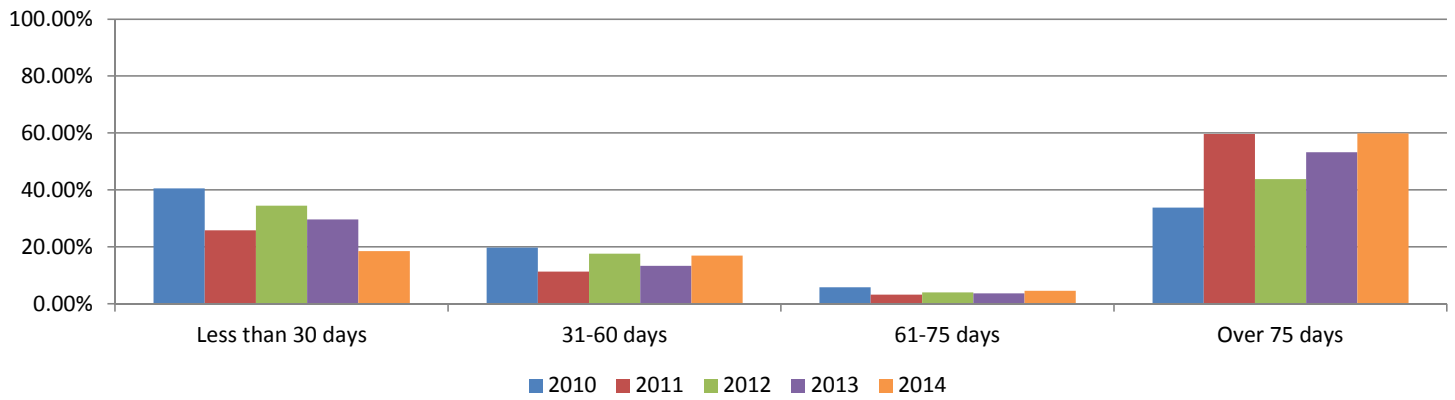
JP2 Percent of Traffic Cases Closed



JP3-1 Percent of Traffic Cases Closed



JP3-2 Percent of Traffic Cases Closed



JP4 Percent of Traffic Cases Closed

