



Frequently Asked Questions: TechShare.Juvenile

*Collin County
November 2014*



Frequently Asked Questions: TechShare.Juvenile



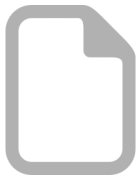
What is TechShare.Juvenile?

TechShare.Juvenile is a robust case management system designed for law enforcement, juvenile probation, prosecutors, county and district clerks, municipal courts, and school districts managing at-risk youth, children in need of supervision (CINS) or juveniles who commit delinquent conduct offenses. This system replaces the caseworker system currently utilized by most counties in the state of Texas for the purposes of reporting data to the Texas Juvenile Justice Department (TJJD). TechShare currently offers two versions of the system.



What are the differences between the two versions?

TechShare's basic solution, JCMS.Basic, provides access to Juvenile data provided by participating counties as well as the ability to track and report juvenile data to TJJD. Our advanced solution, TechShare.Juvenile, includes the basic functionality plus the following:



- Law enforcement management of first offender programs
- Jail logs for juvenile processing offices
- Electronic notice of arrest, disposition, and probation supervision status to school districts
- Advanced case management for juvenile probation supervision
- Electronic disposition reporting for juvenile intake and prosecutor
- Institution and facility management
- Prosecutor case management
- District/county clerk and court functions
- Integration for law enforcement agencies, municipal courts, and schools from their local records management solution to TechShare.Juvenile
- Livescan interfaces for reporting electronic arrest records to the department of public safety



Currently, over 180 counties are using JCMS.Basic and three counties are using TechShare.Juvenile. Approximately six to eight counties are receiving the JCMS.Basic solution per month. Texas counties will have statewide access to the system by August 2015.



Do all branches of law enforcement use these systems?

Section [58.306](#) of the Texas Family Code allows counties to extend the system to all branches of law enforcement, municipal courts, and school districts. In other words, these organizations have access to the system but are not required to use it.

Benefits for Moving to TechShare.Juvenile: *Collin County*



Benefits to Collin County		Advanced
Juvenile Probation	<ul style="list-style-type: none"> Expanded case management features for juvenile probation 	
Information Sharing	<ul style="list-style-type: none"> Functionality to extend the system to law enforcement, district attorney, municipal courts, and school districts, providing a holistic picture of the youth served in Collin County Ability to view data on juvenile offenders across county boundaries and across the state by local law enforcement (and other departments) has the ability 	
Electronic Filing	<ul style="list-style-type: none"> Electronic filing of juvenile referrals from local law enforcements to juvenile probation 	
Facility Management	<ul style="list-style-type: none"> Institutions module for management of detention and county managed placement facilities 	
System Integration	<ul style="list-style-type: none"> Provides integration opportunities to ancillary systems (i.e. Odyssey, EMR, local law enforcement RMS) 	
Research and Data Analysis	<ul style="list-style-type: none"> Receive replicated data for local reporting and research needs 	
Forms Generation	<ul style="list-style-type: none"> Generate county configurable forms 	
Ownership	<ul style="list-style-type: none"> Stakeholder/Product Owner of the system guides the features and function for TechShare.Juvenile and JCMS.Basic participants 	

Product Features:

System Overview

		Basic	Advanced
Information Sharing	<ul style="list-style-type: none"> Share data between departments and agencies across the state 		
Search	<ul style="list-style-type: none"> Locate juvenile within a county or across the State 		
Juvenile Identification	<ul style="list-style-type: none"> Capture a variety of identifying information about the juvenile 		
Law Enforcement Agency Module	<ul style="list-style-type: none"> Administer first offender programs, jail log reporting, refer and file electronically to juvenile department and prosecutor 		
Standard Juvenile Probation Case Management	<ul style="list-style-type: none"> Caseload management, including document juvenile/family employment and income, referrals and associated offenses, detention tracking, program and supervision, fees processing and community service, JJAEP student tracking 		
Advanced Case Management	<ul style="list-style-type: none"> Electronic referrals to multiple agencies (juvenile probation, law enforcement agencies, district attorneys, etc.) Electronic referrals for victim services, mediation, etc. Specialized unit referrals and psychological services Intake, prosecution and disposition reporting to DPS Electronic receipt of offenses and filing to Prosecutor 		
Intake Processing	<ul style="list-style-type: none"> Electronic intake and processing of youth detained/released 		
Institution and Facility Management	<ul style="list-style-type: none"> Facility classification and availability Roster generation Contacts and visitor management Record infractions and sanctions 		
Prosecutor Case Management	<ul style="list-style-type: none"> Prosecutor caseload management, including electronic filing of offenses, prepare/track petitions and motions, action and disposition reporting to DPS 		
District Clerk and Court	<ul style="list-style-type: none"> Court functions, including court docket, schedule hearings, track outcomes Manage warrants, and report disposition to DPS 		
Municipal Courts	<ul style="list-style-type: none"> Municipal court interface, create and manage contact orders and statistical reporting. 		

Product Features: System Overview



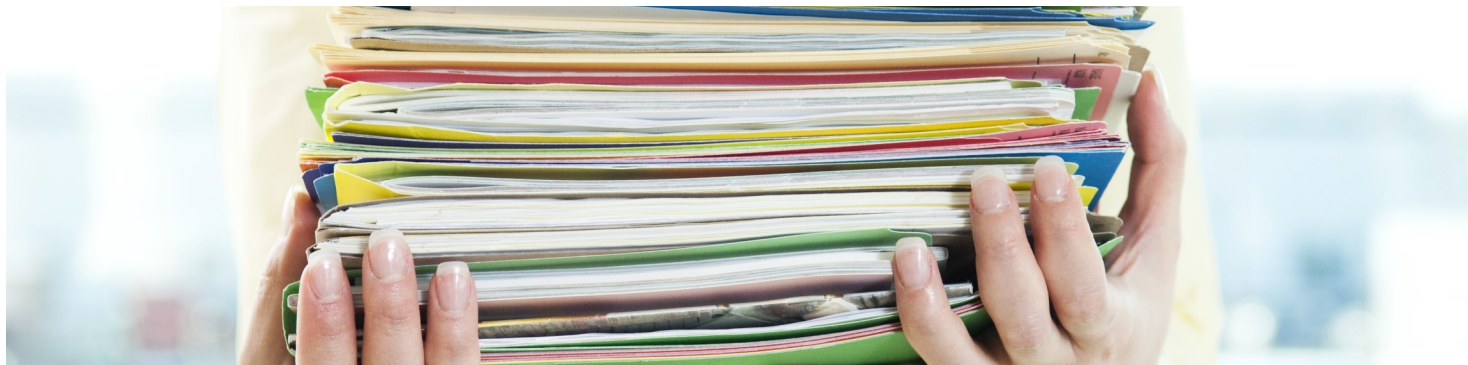
		Basic	Advanced
School Districts	<ul style="list-style-type: none"> Electronic notification of arrest, disposition, and probation. 		
Reports Generation	<ul style="list-style-type: none"> Standardized case management and fee reporting, ad-hoc reporting, print, or export to excel/PDF 		
County System Administration	<ul style="list-style-type: none"> User administration, including archiving sealing records, system configuration, and user defined fields 		
Technical Administration	<ul style="list-style-type: none"> Centrally hosted, automatic backup and software updates. 		
Reporting	<ul style="list-style-type: none"> Compile and submit TJJJ monthly extract Electronic arrest and disposition reporting Livescan integration 		

Detailed Comparison: Case Management

		Basic	Advanced
Standard Juvenile Probation Case Management	<ul style="list-style-type: none"> Caseload management for primary and secondary officers at the Juvenile Level Maintain juvenile employment and family income history Create sticky notes and document attachments Record referrals with associated offenses; dispose of offenses, calculate recommended referral disposition Record, search, sort, and print chronological notes Maintain detention history and details Retain program, non-residential services and placement history Administer fee assessments, payments, refunds, waivers, write-off's, and disbursements to victims. Record JJAEP referrals, entrance and exit information Track juvenile assessment, abuse, behavioral health, and medical information Integration with Assessments.com/Noble Track case plans, deferred, probation, or placement conditions and supervision history 		
Advanced Case Management	<ul style="list-style-type: none"> Electronic referral to victim services, and case management of mediation and victim impact panels File violation of probation electronically to juvenile intake or intake prosecutor Electronic referrals to specialized units and case management for substance abuse and psychological services Report intake and prosecution actions and dispositions to DPS 		



Detailed Comparison: Case Management

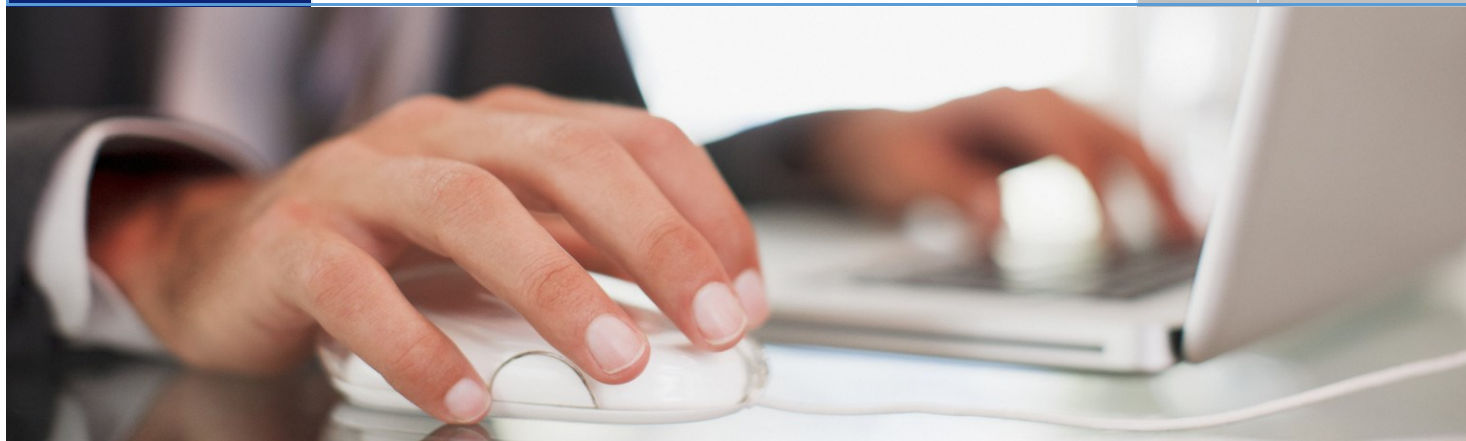


		Basic	Advanced
Advanced Case Management	<ul style="list-style-type: none"> Record levels, infractions, sanctions, visits and phone calls of residents in each county managed detention or placement facility Electronic receipt of offenses, transfer of offenses to probation units for deferred prosecution and/or electronic filing to the prosecutor 		
Prosecutor Case Management	<ul style="list-style-type: none"> Manage prosecutor caseload for active offense assignments Accept electronic filing of offenses and maintain queues to hold offenses pending prosecutor decision Amend offenses, record prosecutor work product and allegation Codes Create and track petition/motion and submit to clerk Report action and disposition to DPS 		
Law Enforcement Agency Module	<ul style="list-style-type: none"> Administer and track first offender programs Local custody management including sight and sound separation, release to parent or county JPD, generate jail log for reporting to the Texas Jail Commission, and current and historical juvenile processing office information Electronically refer a juvenile to juvenile department intake Generate reports for 10-Day rule reporting, runaways, at-risk youth, chronic offenders, crime analysis, daily arrest tracking, FIR activity, FOP enrollment, offenses involving weapons, out of county filings, police filings, outstanding warrants and UCR Attach and secure offense and supplemental reports to offenses Electronically file a case to prosecutor Electronic case management and transfer to internal departments and external law enforcement agencies Document contact with a juvenile and at-risk youth through field interview report (FIR) Record and track warrants requested and served with fast execution entry; identify/highlight juveniles "wanted" for questioning 		

Detailed Comparison:

Information Sharing, Search & Processing

		Basic	Advanced
Information Sharing	<ul style="list-style-type: none"> View juvenile information across the state View and share attachments including ICT packet 		
Search	<ul style="list-style-type: none"> Basic, advanced, and searching by accomplice/complainant/witness to offense Ability to create photo line-up 		
Juvenile Identification	<ul style="list-style-type: none"> Capture juvenile ID, scars/marks/tattoos and amputations, family and associates, address and address history, and school history 		
Intake Processing	<ul style="list-style-type: none"> Receive electronic referrals, record intake screening, capture search, shower, property information, authorize for release or detention, track clothing and bedding items issued for detained youth 		
Institution and Facility Management	<ul style="list-style-type: none"> Facility classification and availability to the bed level Facility roster generation Automatic roster retention Management of contacts, group visits and phone calls 		
District Clerk and Court	<ul style="list-style-type: none"> Generate district court docket Create district court hearing, track attendees and hearing outcomes Track district court offenses through disposition Receive district court filings Create and track warrants including execution/recall Generate-court orders and judgments 		



Detailed Comparison: Access & Reporting

		Basic	Advanced
Municipal Courts	<ul style="list-style-type: none"> Supply municipal court offense history through interface Create contact orders for juveniles who fail to appear in municipal Court Reports for active contact orders, offense records and statistical reporting 		
School Districts	<ul style="list-style-type: none"> Electronic notice of arrest, disposition and new enrollees on probation 		
Reporting	<ul style="list-style-type: none"> TJJD monthly extract Electronic arrest reporting/integration with Livescan Electronic disposition reporting (CJIS) 		
Reports Generation	<ul style="list-style-type: none"> Case and system management reports - CSR status, detention billing activity, detention roster, placement roster, juveniles currently under supervision, pending actions list, deleted transactions, and comprehensive folder edit Fee reports - current fee status, current victim payment status, need to pay victim, receipt transactions, victim payment/refund transactions Ad-hoc reporting Runaway reporting LEA Reports - 10-day rule, at-risk, chronic offender, crime analysis, daily arrest, FIR activity, FOP enrollment, juveniles not reported to school districts, offenses involving weapons where juvenile is complainant, offenses involving weapons where juvenile is offender, out of county filings, outstanding warrant report, police filings, UCR Municipal Court Reports - active contact order, municipal court offense, municipal court statistical Victim Services Reports - mediation outcome, pending court cases, victim services referrals, VIP attendance 		



Detailed Comparison: Administration



		Basic	Advanced
Technical Administration	<ul style="list-style-type: none"> Centrally hosted; no need for county servers Automatic backup and recovery Automatic software updates 		
County System Administration	<ul style="list-style-type: none"> Create and manage user accounts Archive juveniles Seal juvenile records Maintain chronological note types; deferred, probation or placement conditions; CSR agencies, defense attorneys, judges, placement facilities, programs and program providers, user defined fields Manage county offenses for internal county reporting DPS names/SID maintenance TRN block management Electronic request for user accounts from agencies within JCMS 		