

Collin County Toll Road Authority Outer Loop Segment 3a Progress Update



August 8, 2016

DNT to East of Preston Road (SH 289)

ch2m



Collin County Outer Loop Seg 3a BNSF Communication / Coordination

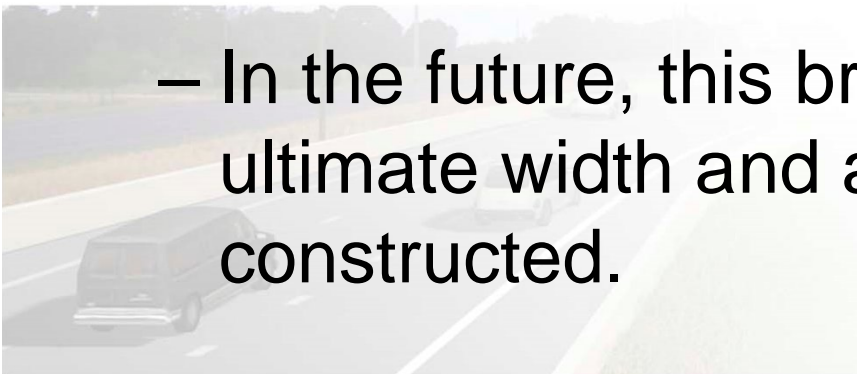
- ~~– Original at-grade crossing at CR 53~~
- ~~– New at-grade crossing shifted approx. 200' north~~
 - ~~• EB FR at-grade crossing denied by BNSF~~
- ~~– RR solutions offered at additional project costs~~
- Mainlane Only Concept Developed
 - From just west of Doe Branch to Preston Road



Collin County Outer Loop Seg 3a

What is the Mainlane Only Concept?

- The proposed frontage roads will be eliminated from just west of Doe Branch to Preston Road.
- A portion of the ultimate EB ML bridge will be constructed with the current plans and used as a two-way frontage road system in the interim condition.
- In the future, this bridge will be widened to the ultimate width and a WB ML bridge will be constructed.



Collin County Outer Loop Seg 3a

Benefits of ML Only Concept

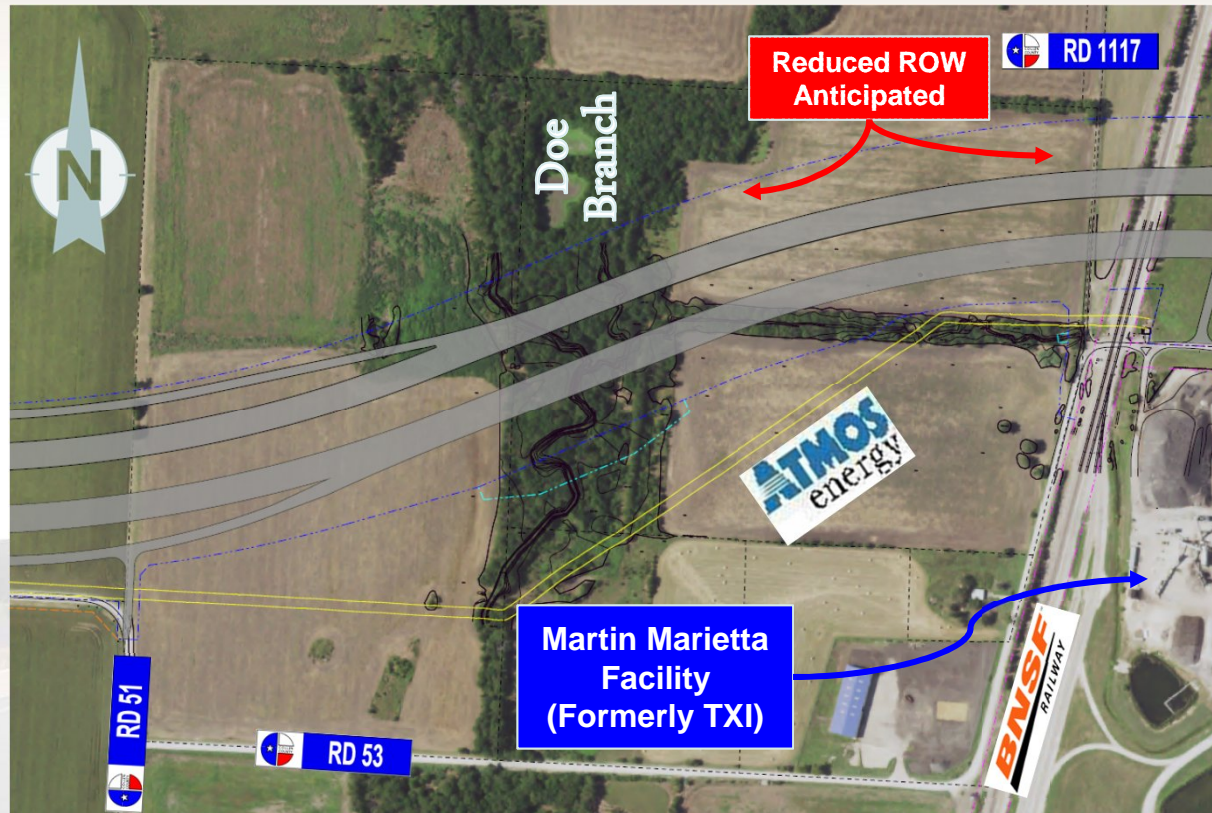
- Eliminates two frontage road RR crossings.
- Eliminates two Doe Branch Creek frontage road bridges.
- With no at-grade RR crossings, traffic can flow independently of BNSF activities.
- Future ML bridge widening will not impact traffic during future construction.
- Shifts some ultimate CCOL construction costs into today's plans.
- Reduces ultimate Outer Loop construction costs by eliminating unneeded roadway and bridge costs.

Collin County Outer Loop Seg 3a Before BNSF Decision



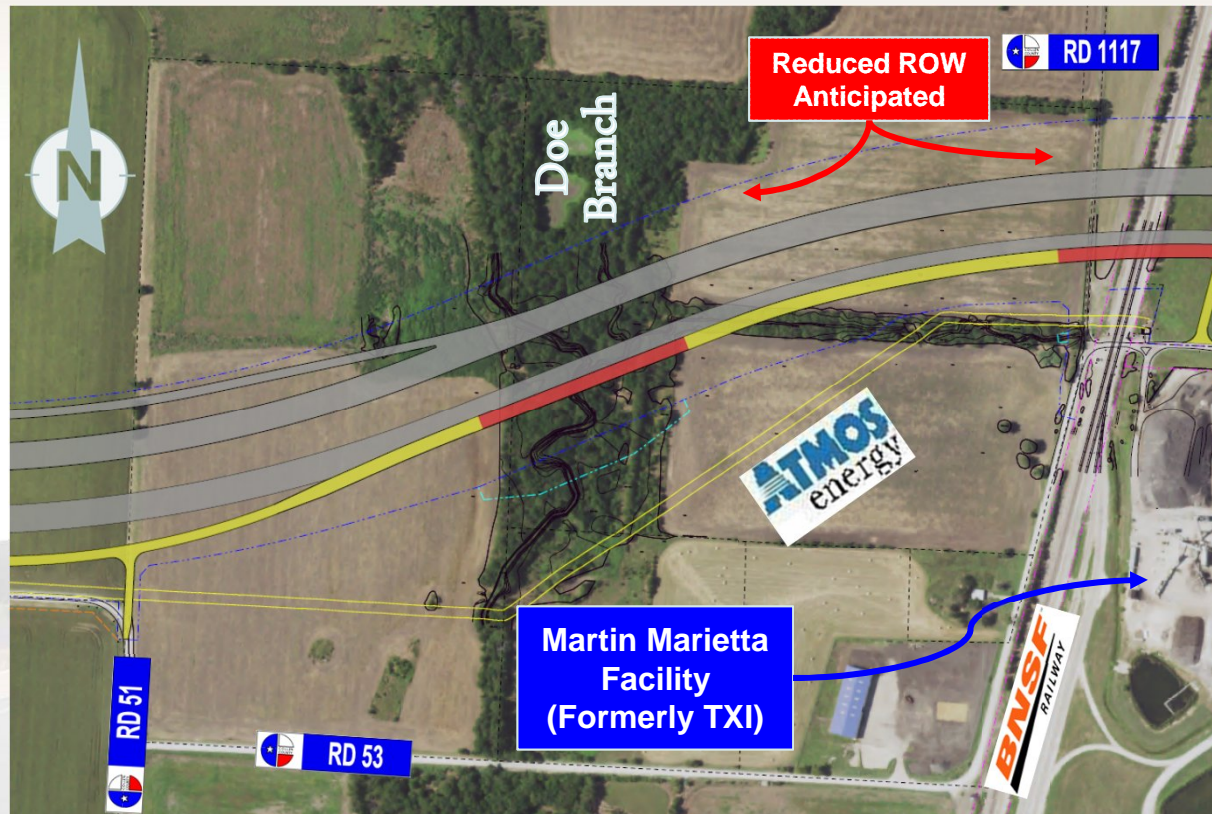
From West of Doe Branch to BNSF Railroad

Collin County Outer Loop Seg 3a Mainlane Only Concept



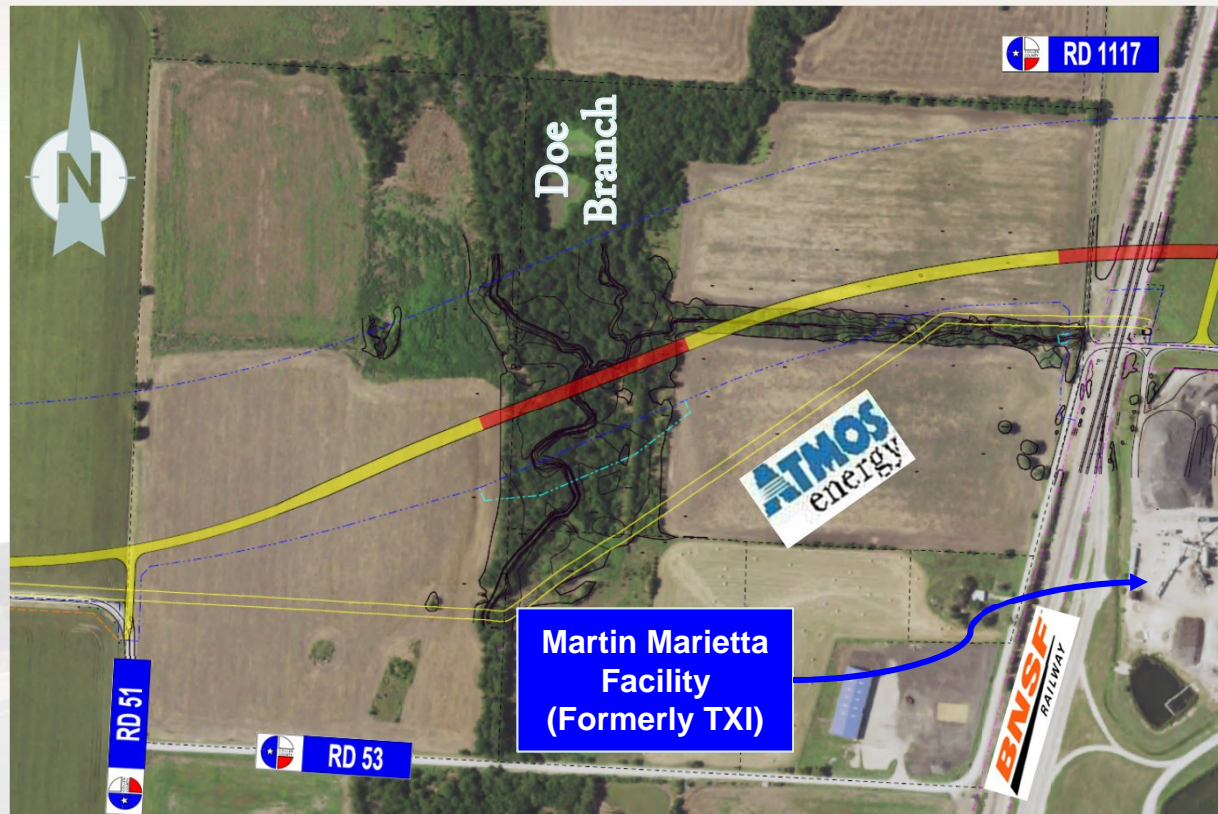
From West of Doe Branch to BNSF Railroad

Collin County Outer Loop Seg 3a Mainlane Only Concept



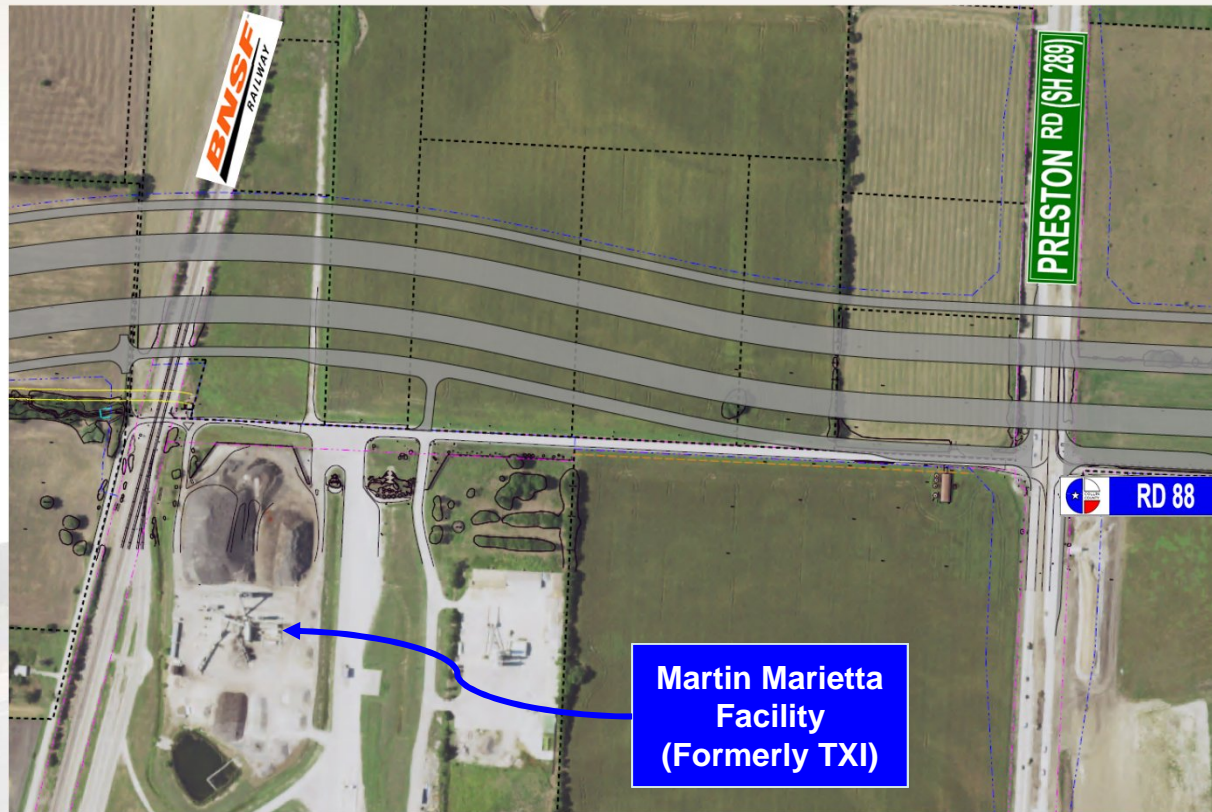
From West of Doe Branch to BNSF Railroad

Collin County Outer Loop Seg 3a Mainlane Only Concept



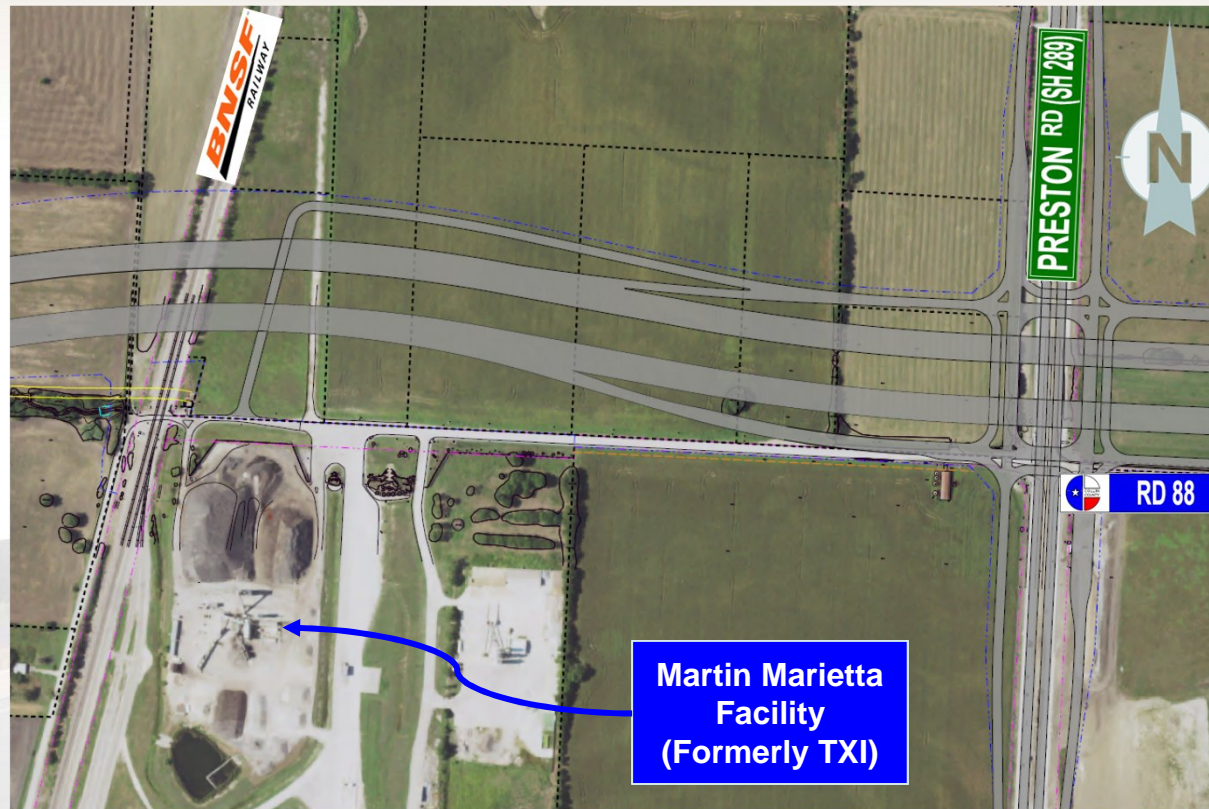
From West of Doe Branch to BNSF Railroad

Collin County Outer Loop Seg 3a Before BNSF Decision



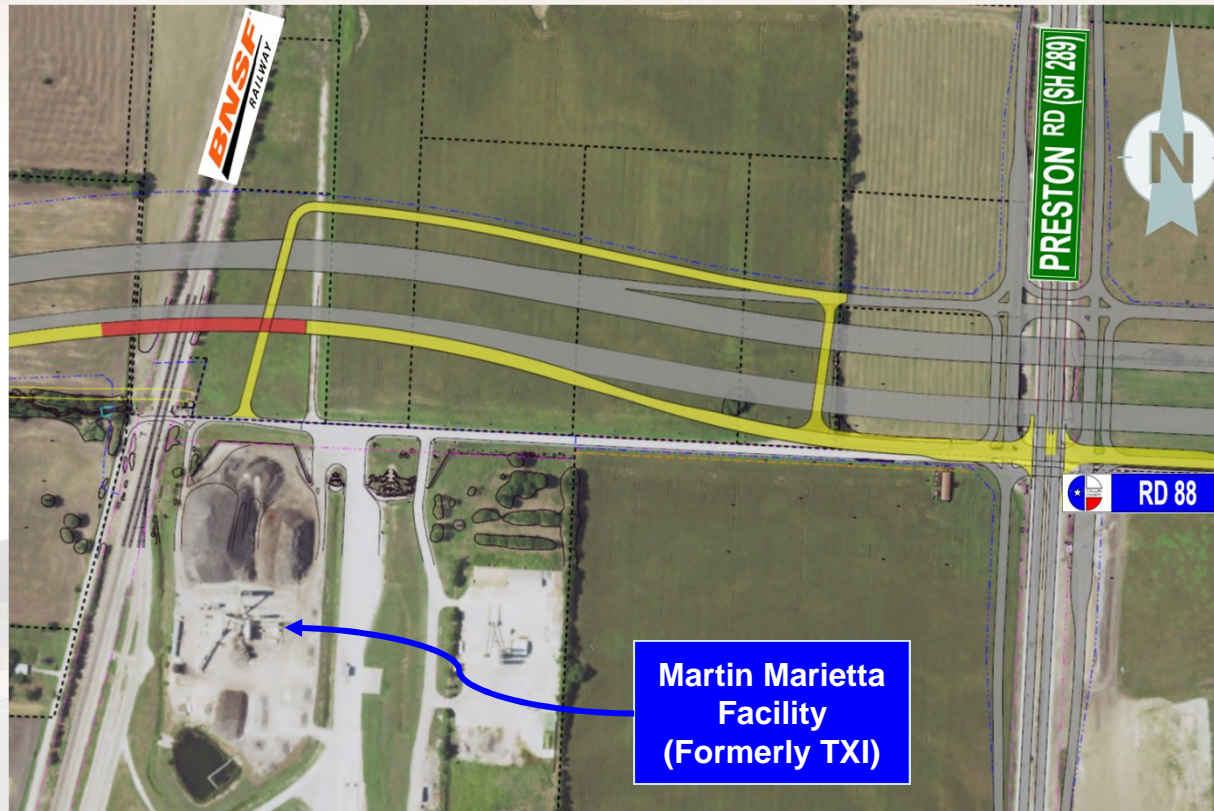
From East of BNSF Railroad to East of SH 289

Collin County Outer Loop Seg 3a Mainlane Only Concept



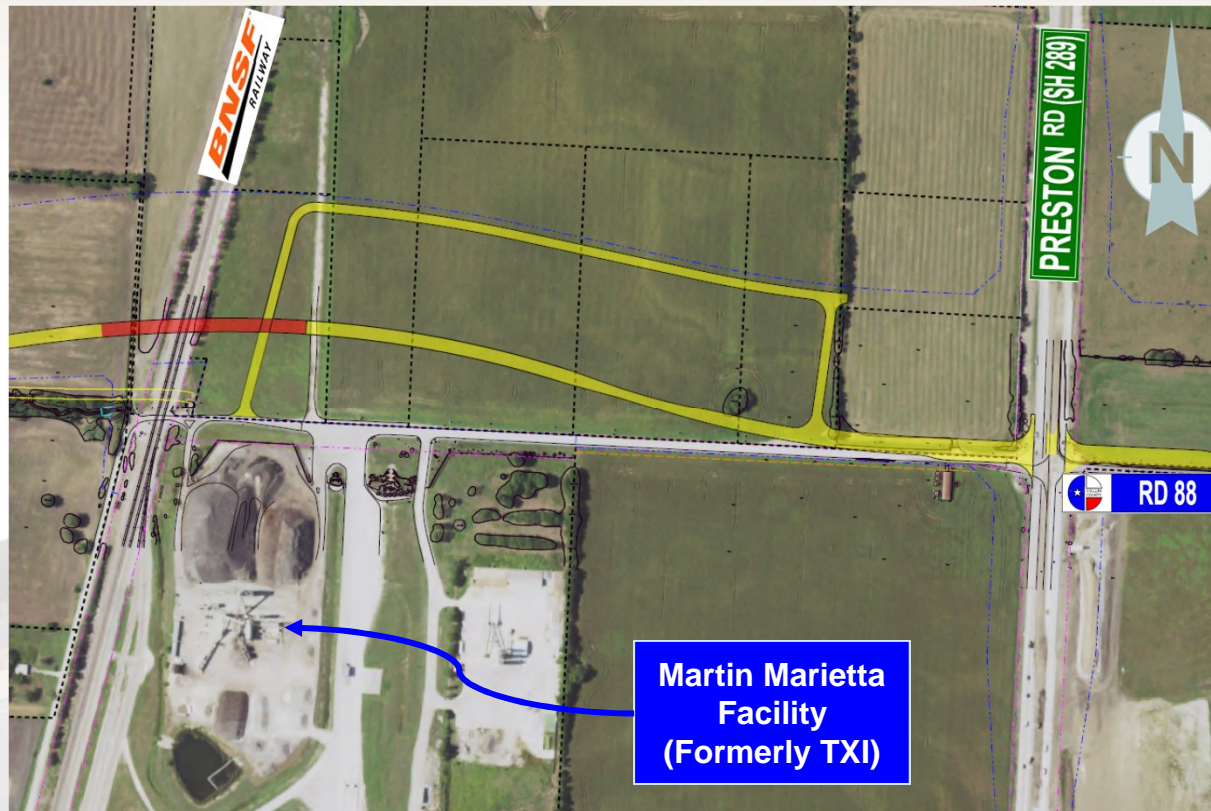
From East of BNSF Railroad to East of SH 289

Collin County Outer Loop Seg 3a Mainlane Only Concept



From East of BNSF Railroad to East of SH 289

Collin County Outer Loop Seg 3a Mainlane Only Concept



From East of BNSF Railroad to East of SH 289

Collin County Outer Loop Seg 3a Construction Cost Adjustments

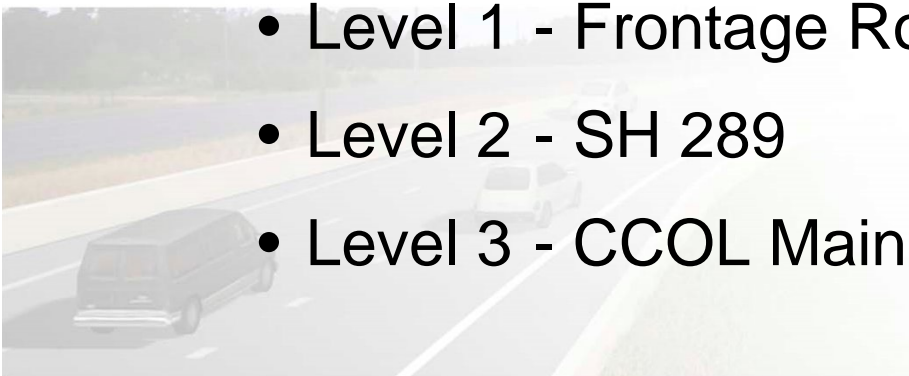
Collin County Outer Loop Construction Cost Adjustments	
EB FR Cost (Before BNSF)	\$9.2M
ML Only Concept*	\$16.5M

* Future construction costs shifted forward into current project



Collin County Outer Loop Seg 3a CCOL & SH 289 Interchange

- In June 2015, CH2M prepared conceptual interchange exhibit in an effort to environmentally clear the area for potential ROW needs.
- This concept (similar to SRT/SH 289) included:
 - Level 1 - Frontage Roads (At-Grade)
 - Level 2 - SH 289
 - Level 3 - CCOL Mainlanes



Collin County Outer Loop Seg 3a CCOL & SH 289 Interchange (Modified)

- The modified concept includes:
 - Level 1 - Frontage Roads (At-Grade) (No Change)
 - Level 2 - CCOL Mainlanes
 - Level 3 - SH 289



Collin County Outer Loop Seg 3a Future Activities

Stakeholder Involvement

- TxDOT & NCTCOG Coordination
- Collin County's DNT Consultant Coordination
- Additional MAPO Meeting(s)

Collin County Outer Loop Seg 3a Future Activities

- Continue ROW Acquisition for Segment 3a
- Continue Development for 60% Design Plans Resubmittal



Collin County Toll Road Authority Outer Loop Segment 3a Questions?



August 8, 2016

DNT to East of Preston Road (SH 289)

ch2m

