

Creating Capabilities

**North Central Texas Public Works  
Emergency Response Team**

# Assessing the Need



- High winds
- Tornadoes
- Hail
- Snow
- Ice

- Flooding
- Blackouts
- Line ruptures



# Purpose

- Enhance the regions ability to manage a major emergency beyond existing local resources
- A cooperative arrangement enabling jurisdictions to:
  - Work out in advance legal & financial issues
  - Simplify the resource request process
  - Expedite recovery

# Scope

- Focused on initial response & short-term recovery
  - Help stabilize the situation
- Reduce workload of impacted jurisdiction by
  - Finding requested resources
  - Organizing deployment based on jurisdiction request
  - Staging management
  - Assignment coordination, improve span of control
  - Enhance planning function – future operational periods
  - Maintain documentation for PWERT response

# Terms of Agreement

- Terms of the agreement:
  - NIMS approach
  - Responding agency under direction of their own supervisor
  - Self sufficient – responding agency responsible for their own food, water, internal communications, fuel and support
  - Operational Costs – no reimbursement for first 36 hours
  - Insurance (workmen's compensation, auto liability) – Each party responsible for it's own actions

NOTE: Signed agreements are provided to the North Central Texas Council of Governments PWERT representative who maintains the repository of all associated documents

# Requesting Agency Process

- **1 Call Activation:**  
immediate access to  
entire region's PWERT  
resources
- Provide PWERT  
Coordinator with details  
of request





# Responding Agency Process



Once contacted by PWERT Coordinator:

- Determine resource availability
- Obtain approval to deploy
- Inform PWERT Coordinator of ability to respond
- Await assignment from PWERT Coordinator

**NO SELF DISPATCHING  
OF PWERT RESOURCES**

# Example Resources

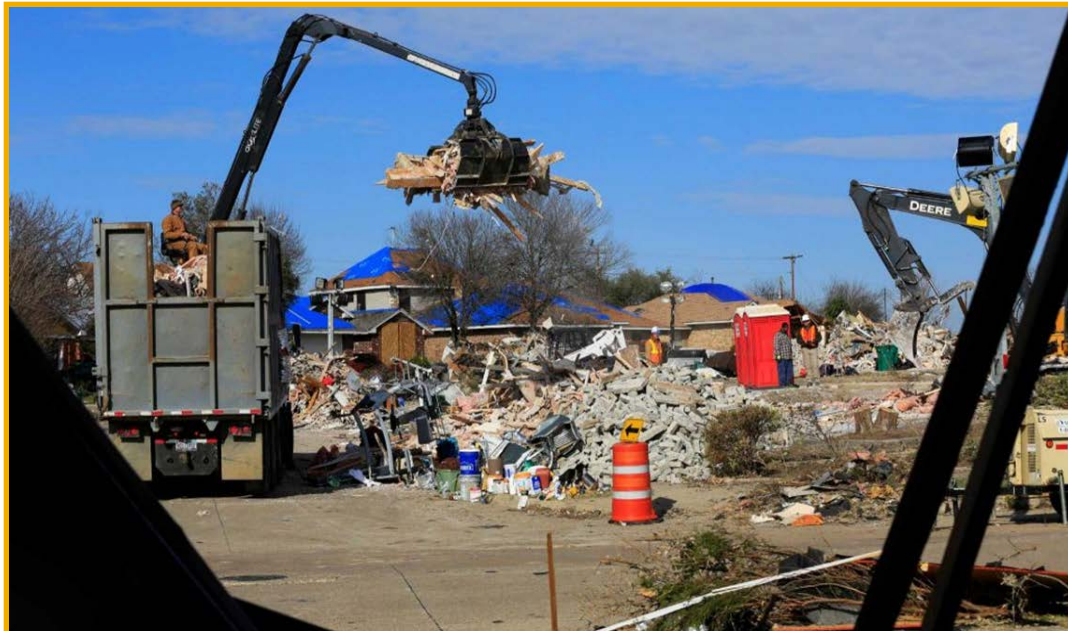


- Personnel
- Barricades
- Heavy Equipment
- Chain Saws, others
- Trucks
- Trailers
- Signage
- Pumps
- Generators
- Sand Bags
- Lighting



# Example Responses

- Holiday Tornadoes, 2015
- Flooding 2015
- Winter Weather 2014-2015
- Lancaster Tornado, 2012



# NEXT STEPS:

1. Review Mutual Aid Agreement and discuss any questions
2. Determine local participation / process for approval
3. Get MAA approved and signed to become a member jurisdiction

# Questions?

**Joe Trammel, Chair**

**NCT Public Works Emergency Response Team**

**JLTrammel@TarrantCounty.com**

**Mistie Gardner, Vice Chair**

**NCT Public Works Emergency Response Team**

**mistie.gardner@cor.gov**