



**COLLIN COUNTY**

Office of the Purchasing Agent  
2300 Bloomdale Road  
Suite 3160  
McKinney, Texas 75071  
[www.collincountytx.gov](http://www.collincountytx.gov)

---

**ADDENDUM No. One (1)**

**Services, Controls Integrator  
RFP No. 2019-096**

Effective: January 18, 2019

You are hereby directed to make changes to the Request for Proposal in accordance with the attached information:

**Add:**

Attachment A – Control Room Screen Shots

Attachment B – Mandatory Pre-Proposal Sign-In Sheet

Bid Document (Complete if submitting a manual proposal)

Attribute #21 – Addendum No. 1 Acknowledgement

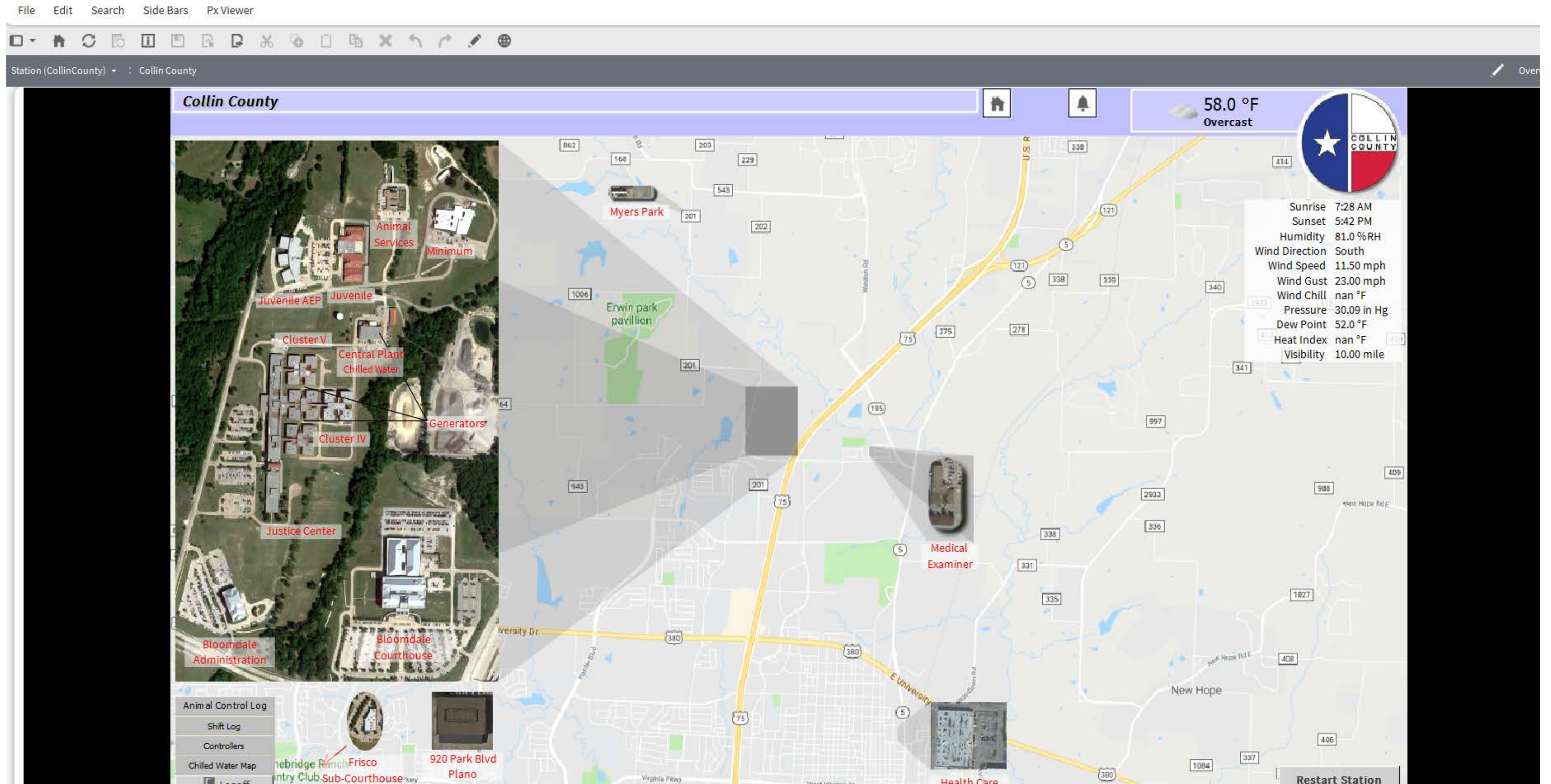
Please note all other terms, conditions, specifications drawings, etc. Remain unchanged.

Sincerely,  
Michalyn Rains CPPO, CPPB  
Purchasing Agent

JDG



# Attachment A-Control Room Screen Shots





**Bloomdale Courthouse**

Collin County

56.0 °F  
Overcast

## Penthouse

Northwest	Northeast
Air Handler	Air Handler
Third Floor	Third Floor
Second Floor	Second Floor
First Floor	First Floor
Lower Level	Lower Level

Southwest	Southeast
Air Handler	Air Handler
Third Floor	Third Floor
Second Floor	Second Floor
First Floor	First Floor
Lower Level	Lower Level

## Atrium

Smoke	Pump Room
Utility Fans	Chilled Water
Elevators	Air Handler
IP Room	Fan Coil Unit
Alarms	
Walk-In Coolers	

	Supply Temperature	Supply Fan Sts 1	Supply Fan Sts 2
NW AHU	45.2 °F	On	On
NE AHU	70.4 °F	On	On
SW AHU	54.9 °F	On	On
SE AHU	54.9 °F	On	On

CH Addition West	CH Addition East
First Floor	First Floor
North	North
South	South
Lower Level	Lower Level
North	North
South	South
Crawl Space	

Fire Alarm Alarm

Chilled Water

	Supply Temperature	Fan Supply	Fan Return
West Ahu	59.9 °F	On	On
East Ahu	61.2 °F	On	On



Sunrise	7:28 AM
Sunset	5:42 PM
Humidity	84.0 %RH
Wind Direction	South
Wind Speed	12.70 mph
Wind Gust	23.00 mph
Wind Chill	nan °F
Pressure	30.10 in Hg
Dew Point	51.1 °F
Heat Index	nan °F
Visibility	10.00 mile

Follow Schedule

Force Occupied

Force Unoccupied

Re-Send Occupancy

Restart Station



**Collin County Justice Center****Exhaust Fans****CCJC**

Building A	
Exhaust Fan	Status
EF-2A1	On
EF-1A1	On
SF-1A1	On
EF-1A2	Off
EF-1A3	Off
EF-1A4	Off
EF-1A5	Off

Building B	
Exhaust Fan	Status
EF-2B1	Off
EF-1B1	Off
EF-1B2	Off
EF-1B3	Off
EF-1B4	Off
EF-1B5	Off
EF-1B6	Off
SSF-1B1	Off
EF-1B8	Off
SSF-1B2	Off
EF-1B9	Off
EF-0B1	On
EF-0B3	On
EF-0B4	On
EF-0B7	On

Building C	
Exhaust Fan	Status
EF-2C1	On
EF-1C2	On

Building D	
Exhaust Fan	Status
EF-1D1	Off
EF-1D2	Off

Building E	
Exhaust Fan	Status
EF-1E1	Off
EF-1E2	Off
EF-2E1	Off
EF-2E2	Off

Building G	
Exhaust Fan	Status
SF-1G1	On
SF-1G2	On
SF-1G3	On
SF-1G4	On
SF-1G5	On
SF-1G6	Off
EF-1G1	Off
EF-1G2	Off
SF-2G7	Off
SF-2G8	Off
SF-2G11	Off
SF-2G12	Off
EF-2G1	Off
EF-2G5	Off
EF-2G2	Off
EF-2G6	On
EF-2G27	On
EF-2G28	On
EF-2G13	On
EF-2G14	On
EF-2G12	Off
EF-2G23	Off
EF-2G9	Off
EF-2G10	Off

Building G	
Exhaust Fan	Status
SF-1G11	Off
SF-1G12	Off
SF-2G9	Off
SF-2G10	Off
SF-2G13	Off
SF-2G15	Off
SF-2G16	Off
EF-2G3	Off
EF-2G7	Off
EF-2G4	Off
EF-2G8	Off
EF-2G26	Off
EF-2G29	Off
EF-2G24	Off
EF-2G19	On
EF-2G20	Off
EF-2G22	Off
EF-2G15	Off
EF-2G16	Off
EF-2G17	Off
EF-2G18	Off
EF-2G21	Off
EF-2G25	Off
SF-1G8	Off
SF-1G9	Off
SF-1G10	Off
EF-2G11	Off
EF-2G22	On
SF-1G7	Off

Building H	
Exhaust Fan	Status
SF-1H1	Off
SF-1H2	Off
SF-1H3	Off
SF-1H4	Off
SF-1H5	Off
SF-1H6	Off
EF-1H1	Off
EF-1H2	Off
SF-2H7	Off
SF-2H8	Off
SF-2H11	On
SF-2H12	On
SF-2H16	On
EF-2H1	On
EF-2H5	On
EF-2H2	On
EF-2H6	Off
EF-2H28	On
EF-2H29	On
EF-2H13	Off
EF-2H14	Off
EF-2H15	On
EF-2H24	On
EF-2H16	On
EF-2H20	On
EF-2H21	Off
EF-2H26	On

Building H	
Exhaust Fan	Status
EF-2H17	Off
EF-2H18	On
EF-2H25	On
SF-1H7	Off
SF-1H8	Off
SF-1H9	Off
SF-1H10	Off
SF-1H11	Off
SF-1H12	On
SF-1H13	On
SF-2H9	On
SF-2H13	On
SF-2H14	On
EF-2H3	Off
EF-2H7	Off
EF-2H8	Off
EF-2H11	Off
EF-2H12	Off
EF-2H27	Off
EF-2H30	Off
EF-2H31	On
SF-1H14	Off
EF-2H10	Off
EF-2H9	On
EF-2H22	On
EF-2H23	On
EF-2H19	On



Northeast Air Handler

Coils Northeast Quadrant Bloomdale Courthouse

Schedule Occupied

System Occupied

Return Flow 7399 cfm

Return Co2 531 ppm

Return Temperature 72.3 °F

Purge Mode Normal

Door Switch 1 Normal

Door Switch 2 Normal

Supply Smoke Normal

Return Smoke Normal

Freeze Normal

High Static Normal

Low Static Normal

Outdoor Minimum Damper Open

Outdoor Minimum Damper Status Closed

Outdoor Damper 0 %

Outdoor Damper Status -0 %

Outdoor Isolation Damper 0 %

Outdoor Isolation Damper Status -0 %

Outdoor Flow 1886 cfm

Outdoor Co2 142 ppm

Supply Flow 70620 cfm

Static Pressure 3 0.34 in/wc

Static Pressure 2 0.37 in/wc

Static Pressure 1 0.37 in/wc

Static Pressure 0 0.34 in/wc

Supply Temperature 70.4 °F

Mixed Temperature 1 71.4 °F

Mixed Temperature 2 71.9 °F

Filter Normal

Return Damper 1 Open

Return Damper Status 1 Opened

Return Damper 2 Open

Return Damper Status 2 Opened

Isolation Damper 1 Open

Isolation Damper Status 1 Opened

Isolation Damper 2 Open

Isolation Damper Status 2 Opened

Relief Damper 0 %

Relief Damper Status Close

Mixed Damper 1 100 %

Mixed Damper 2 100 %

Mixed Damper Status Open

Cooling Valve 1 0 %

Cooling Valve 2 0 %

Valve Details

RoomStatic 0.250 in/wc

Building Damper 1 0 %

Building Damper Status 1 86 %

Building Damper 2 0 %

Building Damper Status 2 87 %

Supply Damper 1 Open

Supply Damper Status 1 Opened

Supply Damper 2 Open

Supply Damper Status 2 Opened

Fan	Command	Emergency	Status	Speed	VSD	Flow
Supply 1	Enable	Normal	On	30 %	Normal	36159 cfm
Supply 2	Enable	Normal	On	30 %	Normal	34606 cfm
Return 1	Enable	Normal	On	15 %	Normal	4161 cfm
Return 2	Enable	Normal	On	15 %	Normal	3172 cfm

Setpoints

Duct Pressure

Outside Air

Morning Warmup

Building Pressure

Supply Temperature 70.4 °F

Supply Temperature Setpoint 55.0 °F

Reset Setpoint Low 55.0 °F

Reset Setpoint High 60.0 °F

Cooling Load 164 %

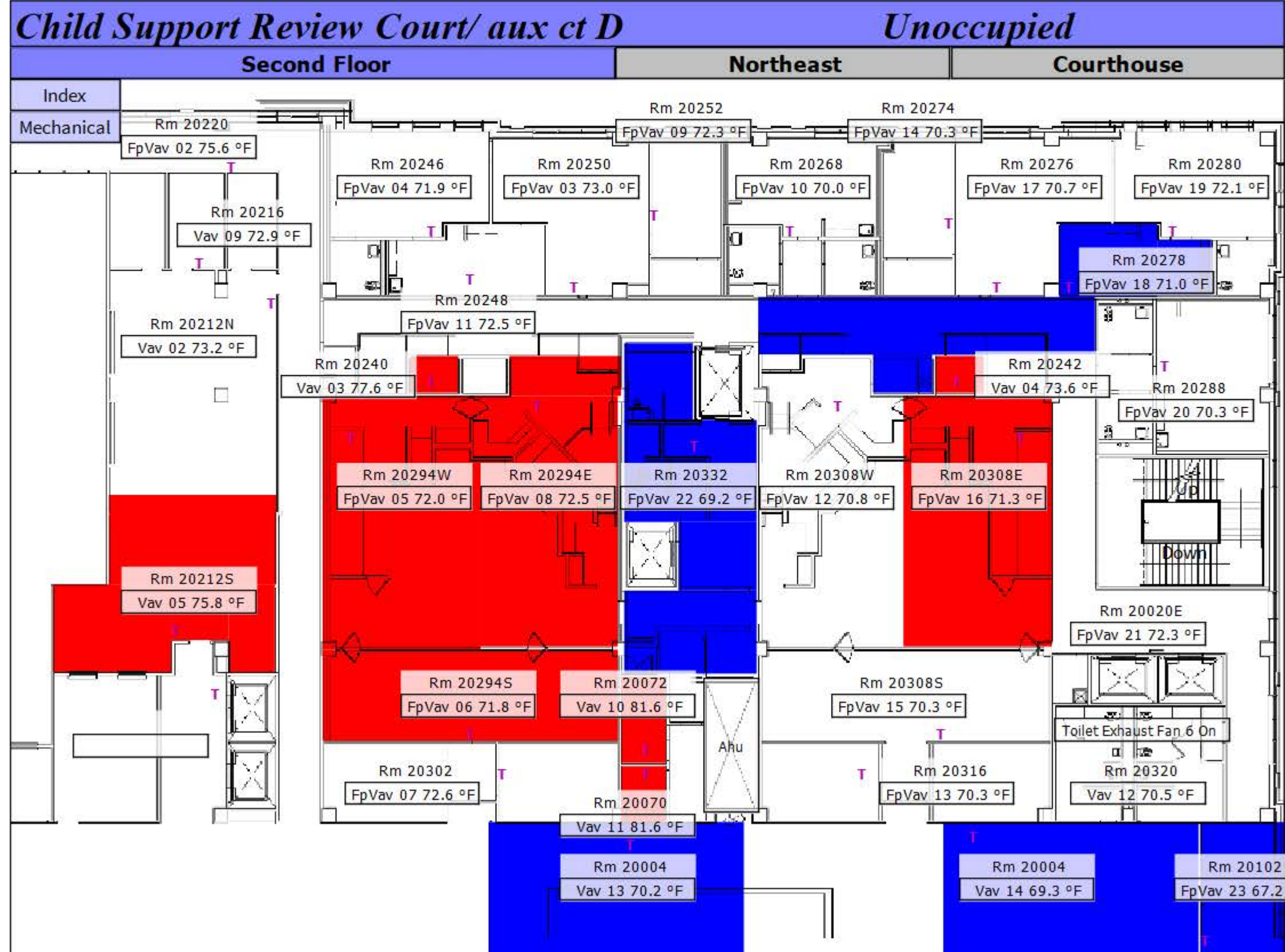
Reset Load Low 50 %

Reset Load High 100 %

56.0 °F

Overcast







# Chiller 1

Chiller 1

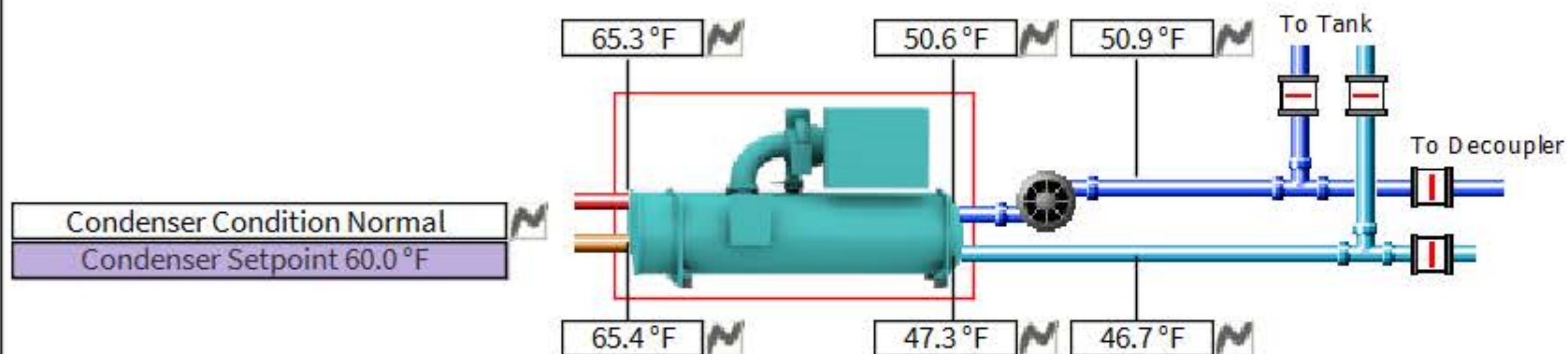
Primary

Plant

System	
Command Disable	
Charge Only Disable	
Condition Normal	Reset
Setpoint 38.0 °F	
Runtime 210 hr	Reset

58.0 °F  
Overcast

16-Jan-19 3:20 PM CST

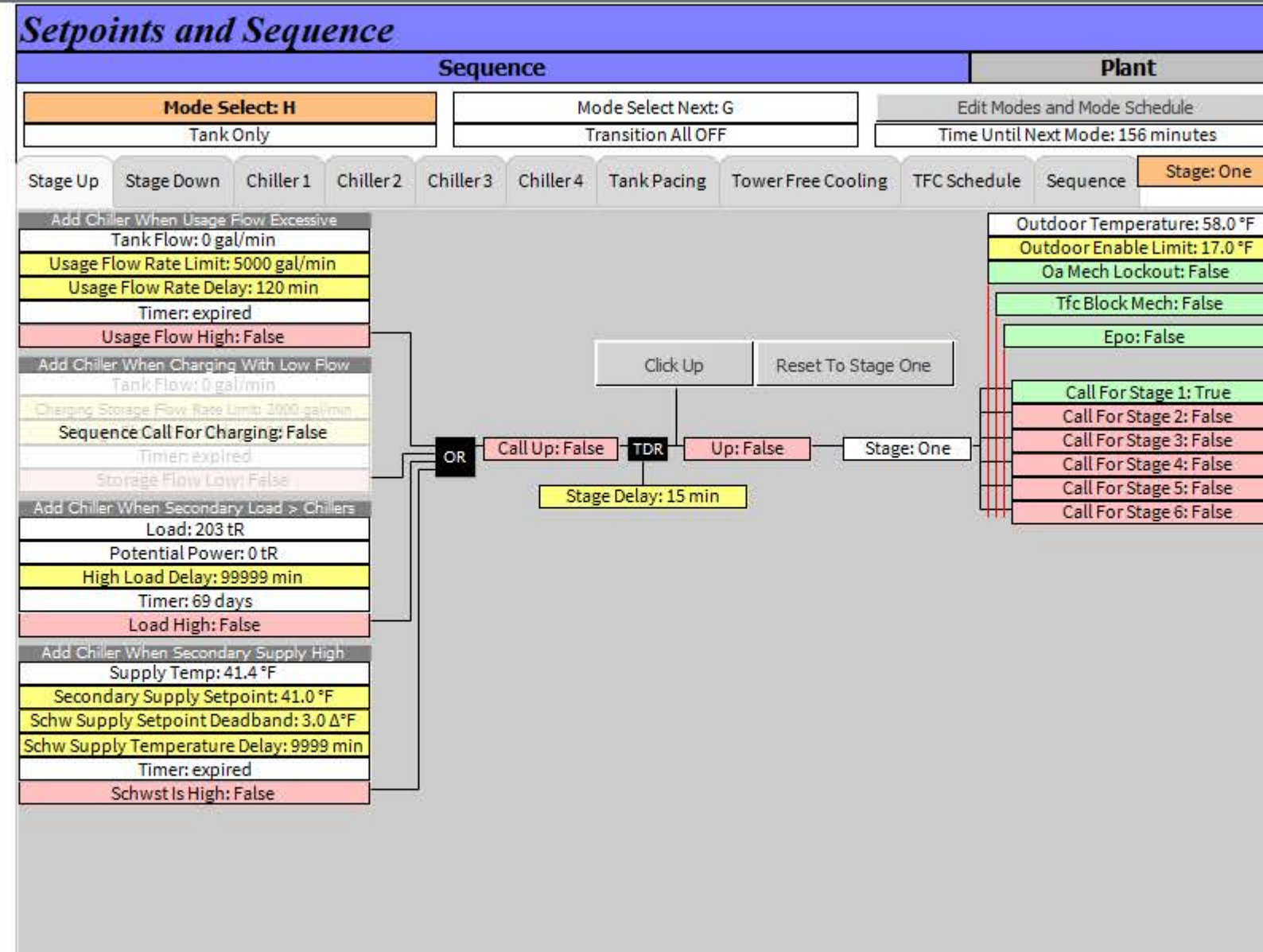


System	Chiller 1	Pump	Chilled Water Valve	Command	Status
Command Disable	Command Disable	Command Disable	Campus Supply Valve	Close	Close
Status Off	Status Off	Speed 0 %	Campus Return Valve	Close	Close
		Status Off	Tank Supply Valve	Close	Close
			Tank Return Valve	Close	Close

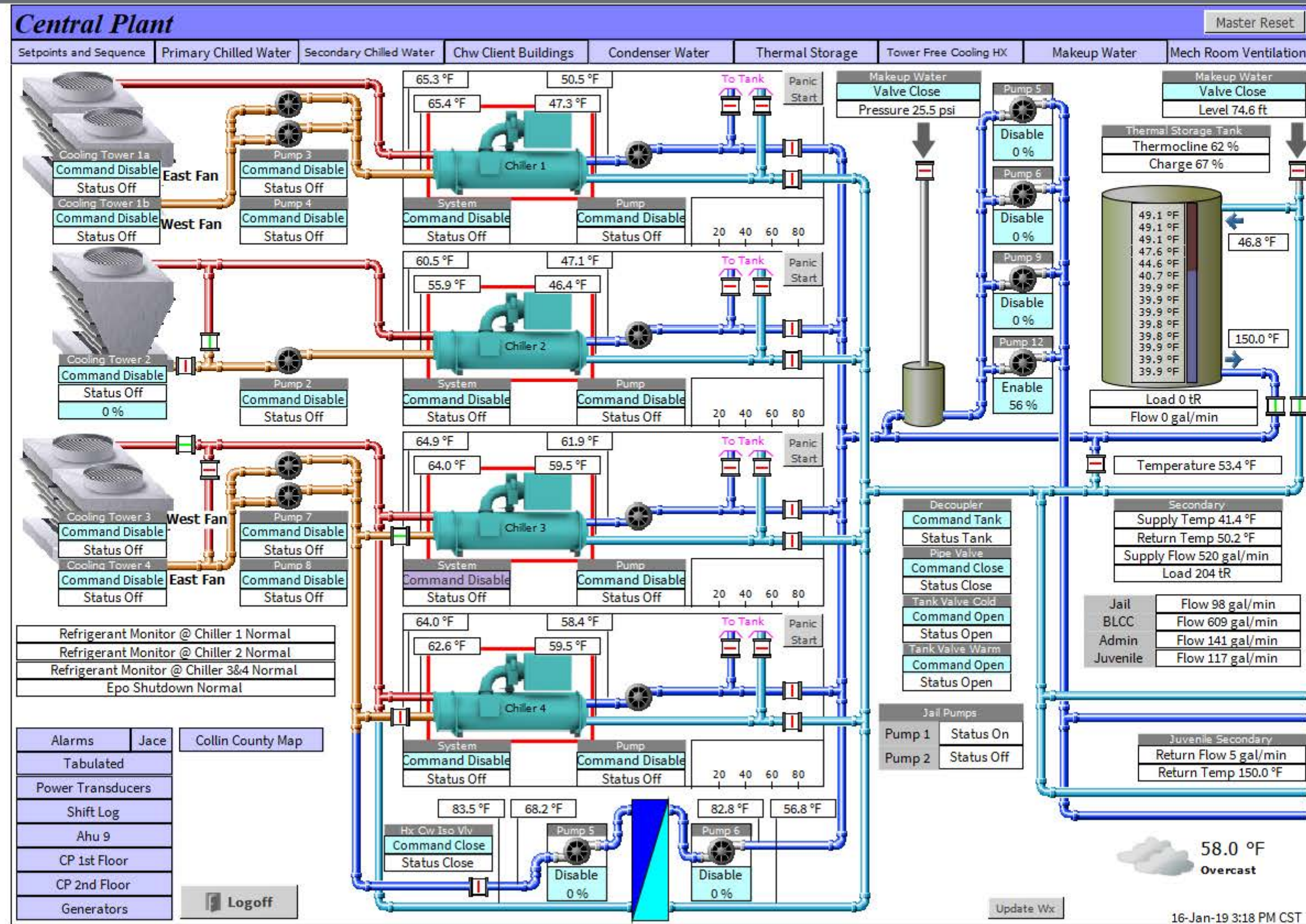
Active Setpoint 38.0 °F	Disch Temp 73.2 °F	System Starts 4937	Min Load Fla 164 %	Oil Ret Sol Off
Actual Capacity 0 %	Oil Temp 108.8 °F	Anti Recycle 0 min	Slide Valve Pos 164 %	Low Sep Oil Sw Off
Capacity Limit 100 %	Run Hours 32767 hr	Vane Pos 0 %	Lvg Liquid Restart -145.0	Vent Lin Sol Off
VSD 0.0 Hz	Voltage A 9 V	Refridge Lev Pos 0 %	Seal Press Diff 41.3	Liquid Line Sol Off
Evap Press 51.0 psi	Voltage B 9 V	Purge Pressure 0.0		Chw Pump Req False
Cond Press 50.4 psi	Voltage C 9 V	Oil Sump Pressure 0.0		Chw Flow Switch False
Oil Diff Press 0.0 psi	Current A 0.0 A	Oil Pump Pressure 0.0		
Evap Sat Temp 54.8 °F	Current B 0.0 A	Refrigerant Lev Setp 0.000		
Cond Sat Temp 54.3 °F	Current C 0.0 A	Filter Pressure Diff 0.0		

Alarm Descr OPR=2 SAF=0 WRN=0 CYC=0











Sallyport

Northwest Lower Level

Northwest Quadrant

Bloomdale Courthouse

Home

Alerts

Wi-Fi

Sunny

33.0 °F

Fair

Collin County

System Occupied

Ovrd

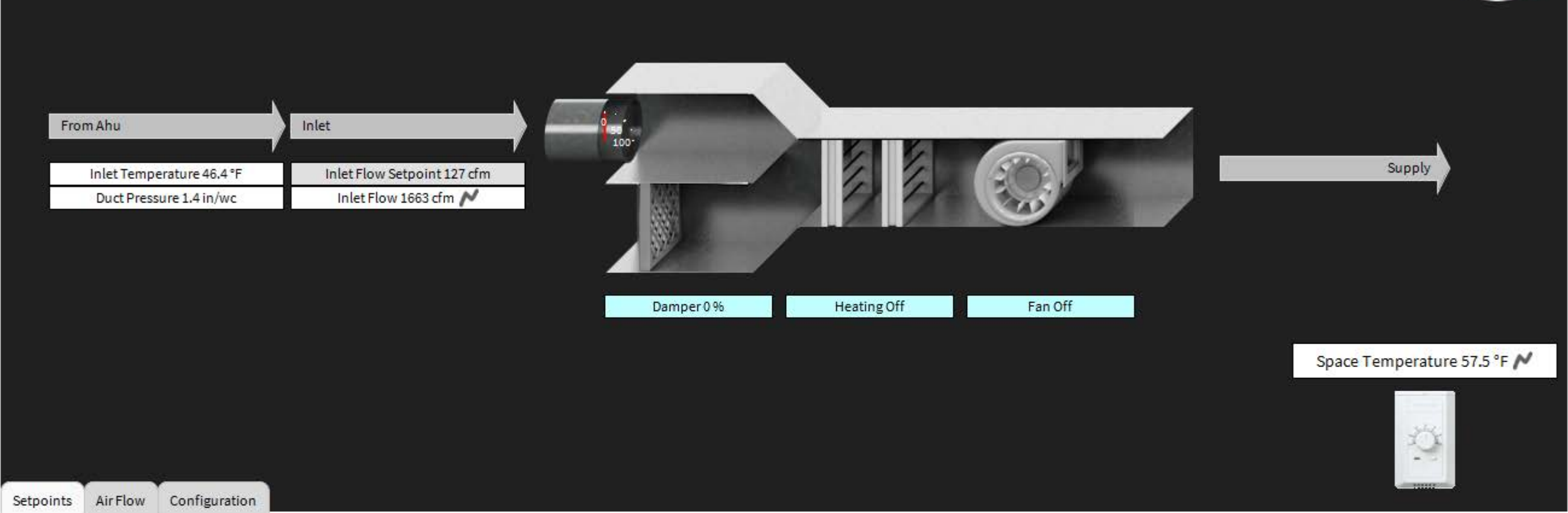
Auto

Mode Cool

Fpv 5

Room Number 00072

Terminal Load 0 %










Setpoints

Air Flow

Configuration

Parameter	Value
Space Temperature	57.5 °F
Effective Setpoint	65.0 °F
Unoccupied Heating Setpoint	71.0 °F
Occupied Heating Setpoint	73.0 °F
Occupied Cooling Setpoint	76.0 °F
Unoccupied Cooling Setpoint	78.0 °F



CP 1500kW Generator			
	Value	Last True	Last False
Tank High Level	False 	27-Nov-18 4:05 PM CST	27-Nov-18 4:07 PM CST
Tank Low Level	False 	27-Nov-18 4:04 PM CST	27-Nov-18 4:05 PM CST
Run Status	False 	27-Nov-18 3:59 PM CST	27-Nov-18 4:19 PM CST
Shutdown	False 	28-Dec-17 7:36 AM CST	03-Jan-18 11:37 AM CST
Coolant High Temp	False 	null	null
Low Fuel Warning	False 	13-Jun-18 5:15 PM CDT	13-Jun-18 5:21 PM CDT
Overflow Alarm	False 	null	null



Heat Recovery Unit, Kennel


Animal Services

System Occupied Hand Off Auto

Mode Heat Ovr Auto

56.0 °F  
Overcast

Terminal Load -8 %  
Hvac Condition Normal



Outdoor Temperature 67.0 °F

Cooling Off Fan Command On Heating Off

Space Temperature 69.7 °F

Setpoints

Space Temperature 69.7 °F  
Effective Setpoint 69.7 °F  
Setpoint 72.0 °F

55 60 65 70 75 80 85



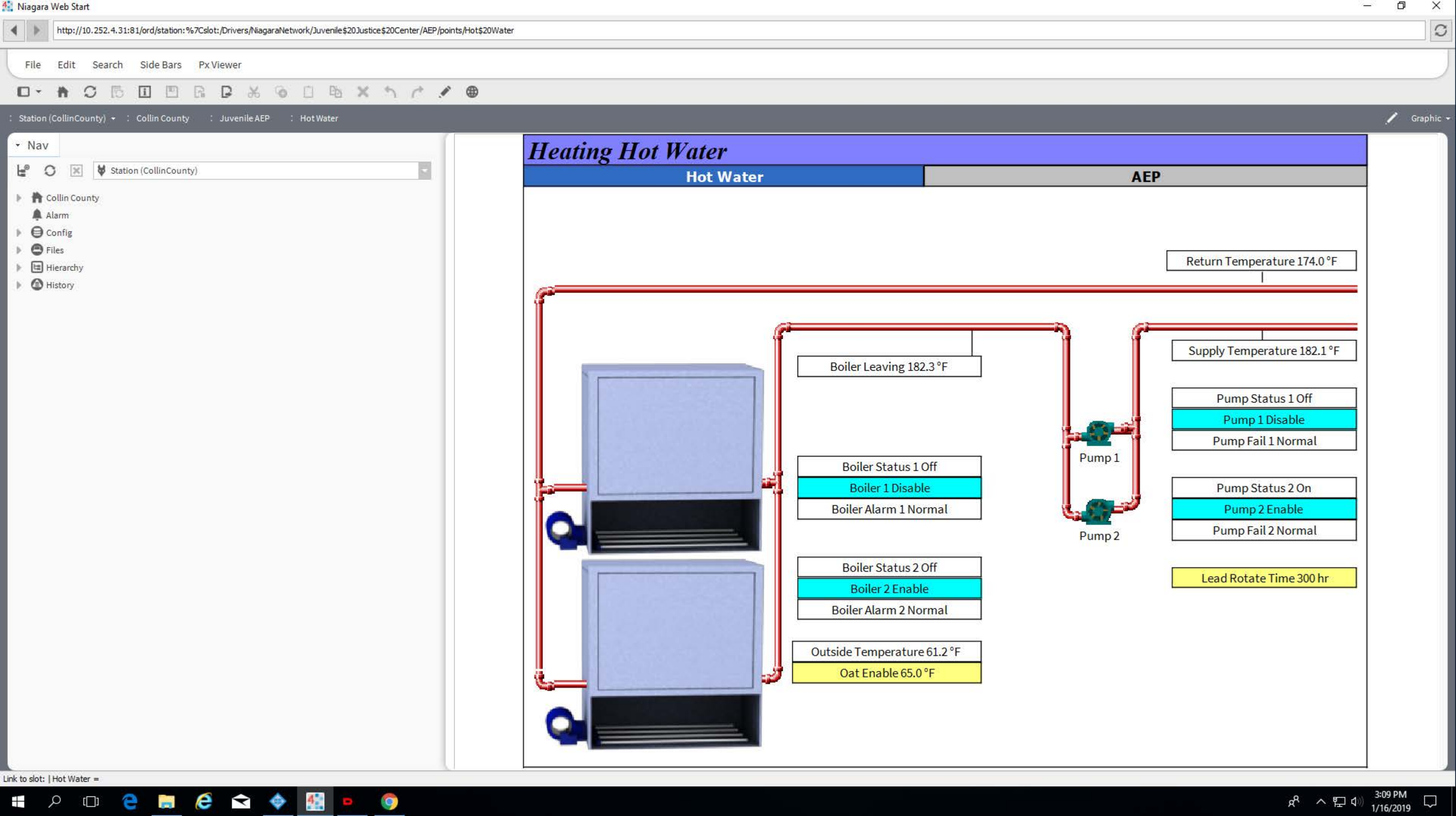
Collin County Justice Center

Hot WaterCCJC

Domestic Hot Water								
Heater	Status	Serves	Supply Temp	Leaving Temp	Ignition	Water Flow	Flame Failure	ERROR
WH-TK-1	Off	Jail			Normal	Normal	Normal	Alarm
WH-TK-2	Off	Jail - Kitchen		nan °F	Normal	Normal	Normal	Alarm
WH-TK-3	Off	Jail - Infirmary	123 °F	108 °F	Normal	Normal	Normal	Alarm
WH-TK-4B	Off	Jail - Kitchen	136 °F	120 °F	Normal	Normal	Normal	Alarm
WH-TK-4	Off	Sheriff's Office	111 °F	112 °F	Normal	Normal	Normal	Alarm
WH-TK-5	Off	Jail	121 °F	120 °F	Normal	Normal	Normal	Alarm
WH-TK-7	Off	Cluster 3	125 °F	124 °F	Normal	Normal	Normal	Alarm
WH-TK-8	Off	Cluster 1	127 °F	66 °F	Normal	Normal	Normal	Alarm
Cluster 5		Cluster 5	140.3 °F	123.3 °F			Normal	

Heating Water					
Boiler	Command	Status	Ignition	Water Flow	Flame Failure
Boiler 1	On	Off	Normal	Normal	Normal
Boiler 2	On	Off	Normal	Normal	Normal
Pump	Command	Status	Supply Temp	Return Temp	
Pump 7	On	On	156 °F	140 °F	
Pump 8	On	On	Supply Press	Return Press	
			65.8 psi	83.4 psi	
Diff Press	Diff Press Sp	Bypass Valve			
-17.6 psi	0.0 psi	100 %			









## Collin County Justice Center

### Make-Up Air Units

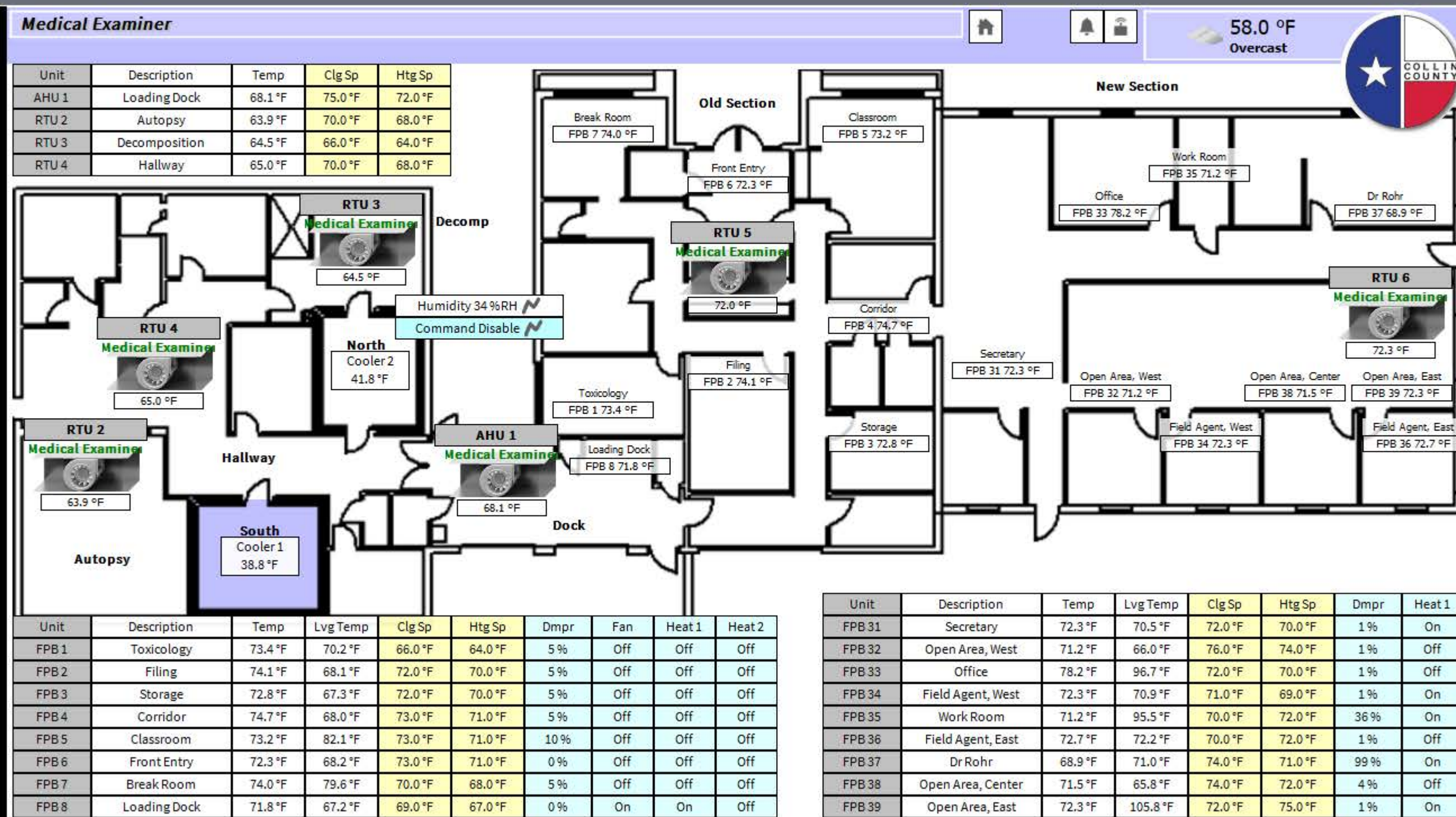
CCJC

### Make-Up Air Units

Make Air Unit	Leaving Temp	Fan Status	Fan Amps	Furnace	Heating Valve	Cooling Valve	Outside Temp
MAU-2C1	53 °F	Normal	10.78 A	On	0 %	0 %	63 °F
MAU-1	38 °F	Normal	10.91 A	On	0 %	20 %	34 °F
MAU-2	53 °F	Normal	10.58 A	On	0 %	0 %	63 °F
MAU-3	41 °F	Fault	10.67 A	On	0 %	0 %	64 °F
MAU-4	48 °F	Normal	11.07 A	On	0 %	0 %	62 °F

Make Air Unit	Leaving Temp	Fan Status	Furnace	Heating Valve	Cooling	Cooling Valve	Outside Temp
Dishwasher MAU	46 °F	100 %	Low	0 %	Low	100 %	62 °F







**Collin County Justice Center****Terminal Boxes****CCJC****Detention Center Building A - First Level**

Door #	Id	Description	Zone Temp	Inlet Flow	Door #	Id	Description	Zone Temp
A1228	FPB_30	Corridor	70.1 °F	104 cfm	A1227	Zone 1	Kitchen	78 °F
A1228	FPB_28	** Corridor	70.1 °F	nan cfm	A1217	Zone 2	Dry Food Storage	70 °F
A1228	FPB_27	** Corridor	70.1 °F	0 cfm	A1222	Zone 3	Laundry Office	73 °F
A1228	FPB_32	Corridor	70.1 °F	104 cfm	A1201-05	Zone 4	Purchasing	75 °F
					A1211	Zone 5	FAC Shop / Purchasing	75 °F

**Detention Center Building A - Second Level**

Door #	Id	Description	Zone Temp	Inlet Flow
A2000	FPB_29	Corridor	67.9 °F	61 cfm

**Detention Center Building B - Lower Level**

Door #	Id	Description	Zone Temp	Inlet Flow	Door #	Id	Description	Zone Temp	Inlet Flow
B0155	FPB_39	Intox	73.0 °F	146 cfm	B0107	CAV_50	Staff Toilet	73.3 °F	49 cfm
B0151	FPB_40	Arresting Officer	72.8 °F	214 cfm	B0106	VAV_51	Office	72.5 °F	nan cfm
B0152	CAV_41	Acceptance Holding	72.7 °F	0 cfm	B0103	FPB_52	Transfer Officer	70.3 °F	167 cfm
B0157	VAV_42	Fast Release Counter	73.2 °F	305 cfm	B0111	VAV_53	Corridor	71.3 °F	0 cfm
B0141	FPB_43	Waiting	71.7 °F	0 cfm	B0112	CAV_54	Property Storage	73.9 °F	197 cfm
B0141	VAV_44	Waiting	72.8 °F	244 cfm	B0114	CAV_55	Medical	74.0 °F	273 cfm
B0137	VAV_45	Bookin Desks	72.9 °F	114 cfm	B0112	CAV_56	Property Storage	73.9 °F	0 cfm
B0101	CAV_47	Bookin Holding	72.3 °F	307 cfm	B0125	VAV_57	Medical	70.3 °F	89 cfm
B0120	CAV_48	Corridor	69.2 °F	0 cfm	B0113	VAV_58	Corridor	69.2 °F	0 cfm
B0146	VAV_49	Office	73.3 °F	148 cfm	B0159	VAV_46	Atty Visit, Bonds Hall, Corridor	69.2 °F	0 cfm

**Detention Center Building B - First Level**

Door #	Id	Description	Zone Temp	Inlet Flow	Door #	Id	Description	Zone Temp	Inlet Flow
B1100	FPB_1	Corridor by Infirmary	71.9 °F	108 cfm	B1105	FPB_24	Interview	71.1 °F	0 cfm
B1350	VAV_10	Lieutenant Office	71.7 °F	93 cfm	B1109	VAV_25	Office	72.4 °F	89 cfm
B1349	VAV_11	Commissary	71.9 °F	0 cfm	B1100	VAV_26	Corridor	72.4 °F	57 cfm
B1348	FPB_12	Mail	72.7 °F	140 cfm	B1100	FPB_35	Corridor	69.2 °F	0 cfm
B1121	FPB_13	Judge's Chambers	69.5 °F	102 cfm					
B1116	FPB_14	Arraignment	69.2 °F	0 cfm					
B1116	VAV_15	Arraignment	69.2 °F	0 cfm					
B1119	FPB_16	Clerk	72.0 °F	282 cfm					
B1100	VAV_17	Corridor	69.5 °F	75241 cfm					
B1101	VAV_18	Corridor	70.4 °F	4 cfm					
B1104	FPB_20	Classification	72.8 °F	0 cfm					
B1114	VAV_21	Supply Storage # 8	69.3 °F	0 cfm					
B1113	VAV_22	Interview	69.3 °F	0 cfm					
B1107	FPB_23	Interview	69.4 °F	68 cfm					

Door #	Id	Description	Zone Temp
B1326	Zone 1	Pharmacy	71 °F
B1321	Zone 2	Conference Room/Break Area/Doctor	72 °F
B1343	Zone 3	Isolation Cells/Medical Gas Storage	71 °F
B1326	Zone 4	Observation Cells	69 °F
B1327	Zone 5	Nurses Station	71 °F
B1328	Zone 6	Waiting/Dental/Exam	71 °F

**Detention Center Building B - Second Level**

Door #	Id	Description	Zone Temp	Inlet Flow	Door #	Id	Description	Zone Temp	Inlet Flow
B2000	FPB_31	Corridor	68.5 °F	61 cfm	B2000	FPB_34	Corridor	67.9 °F	108 cfm
B2000	FPB_33	Corridor to H	67.5 °F	0 cfm	B2002	FPB_37	Corridor	70.5 °F	61 cfm

**Detention Center Building C - First Level**

Door #	Id	Description	Zone Temp	Inlet Flow	Door #	Id	Description	Zone Temp	Inlet Flow
--------	----	-------------	-----------	------------	--------	----	-------------	-----------	------------



Diagram Library

Search Diagram Library...

Home

Devices

9

Network Diagram

Site Plan

Floor Plan

One Line

G

Gens / ATS

Electric Layout

Electric Grid

Grid Map

iPhone View

Comms

Condensed

Generator

1500kW Gen0.0 kW

Unit in Manual

No

Supplying Load

No

Bat Voltage

26.3 V

Engine RPM

0 RPM

Gen Running

No

Emergency Stop

No

Freq

0.0 Hz

Oil Pressure

0.0 kPa

750kW Gen0.0 kW

Unit in Manual

No

Supplying Load

No

Bat Voltage

26.8 V

Engine RPM

0 RPM

Gen Running

No

Emergency Stop

No

Freq

0.0 Hz

Oil Pressure

2.1 kPa

JJAEP Gen0.0 kW

Power Status

On Utility

Coolant Temp

57.0 °C

Bat Voltage

13.4 V

Oil Pres

0.0 kPa

Voltage Avg

0 V

Intake Temp

109.4 °C

Oil Temp

134.6 °F

Eng Speed

0.0 RPM

Current Avg

0.0 A

Admin ATS

Power Status

Gen Off

Contactor

Normal

Switch Postion

Auto

Freq

0.0 Hz

Perferred Source

Source 1

Animal Sheltor Gas

0.190 \_MCF

12.171 \_MCF

Central Plant

Lower B

Cluster 1

Cluster 3

Cluster 4

Cluster 5

JUVD

MSJ

JJAEP

Admin

BLCC

J2

CH4

MJ

EJ

J

LE

C

LB

A

EH

H

EG

MG

G

EG

SB

ME

E

EF

F

MF

JD

MS

1

1

1

2

Electric Meter Total kW

1,175.0 kW

CP Incoming Main

880.0 kW

Central Plant Total kW

172.0 kW

Justice Center Power

718.0 kW

Doesn't include Cluster 4

BLCC Total kW

402.0 kW

CP Sub J

79.0 kW

CP J 2JD

32.0 kW

CP EJ E1JH

19.0 kW

CP MJ MCCJ

8.0 kW

CP Sub CH2

4.3 kW

JJAEP

66.0 kW

NJC Lower B

517.0 kW

NJC Cluster 1

84.0 kW

NJC Cluster 3

85.0 kW

NJC Cluster 4

kW

NJC Cluster 5

31.0 kW

MSJ

103.0 kW

JUVD

63.0 kW

Animal Sheltor

53.0 kW

Admin

80.6 kW

BLCC 1

293.0 kW

BLCC 2

109.0 kW







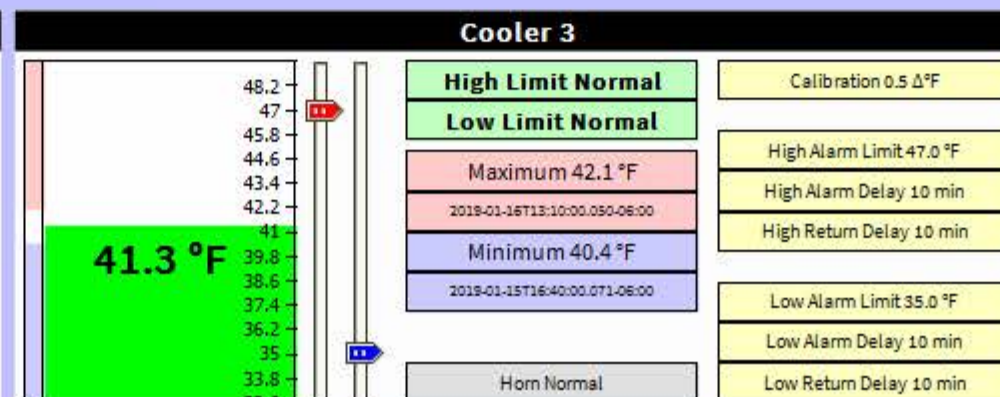
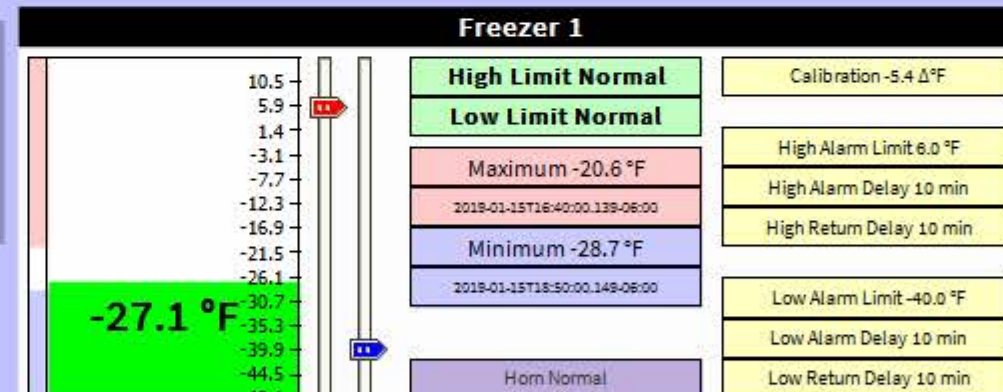
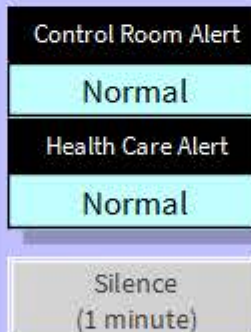
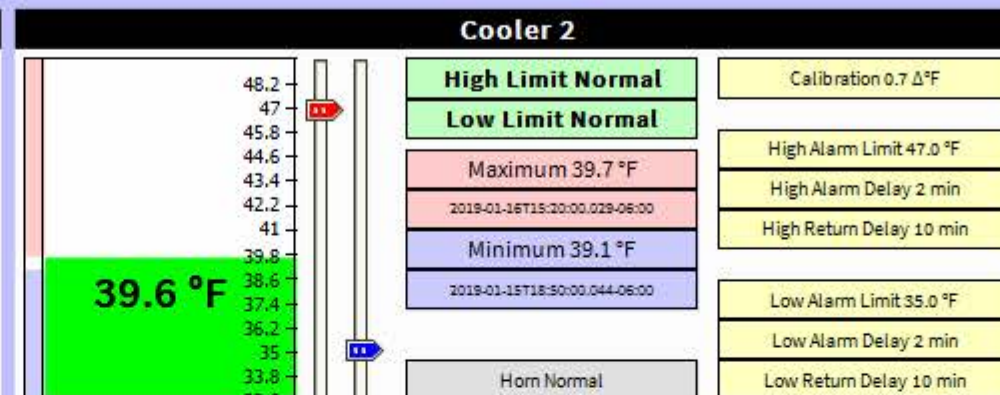
## Plant

Return Temp 47.0 °F
Tertiary Return Setpoint 55.0 °F

3:40 PM



## Collin County Map





## 366th Audio

Northwest Third Floor

Northwest Quadrant

Bloomdale Courthouse

System Occupied

Ovrd

Auto

Mode Cool

Vav 11

Room Number 30166

Terminal Load 0 %

58.0 °F  
Overcast

From Ahu

Inlet

Inlet Temperature 45.0 °F

Inlet Flow Setpoint 59 cfm

Duct Pressure 1.3 in/wc

Inlet Flow 53 cfm

Supply

Damper 28 %

Space Temperature 72.7 °F

Setpoints

Air Flow

Configuration

Space Temperature 72.7 °F

Effective Setpoint 73.0 °F

Unoccupied Heating Setpoint 63.0 °F

Occupied Heating Setpoint 71.0 °F

Occupied Cooling Setpoint 73.0 °F

Unoccupied Cooling Setpoint 75.0 °F

55

60

65

70

75

80

85

90





# RFP# 2019-096

## MANDATORY PRE-PROPOSAL CONFERENCE SIGN-IN SHEET

<b>Project:</b>	Services, Controls Integrator	<b>Meeting Date:</b>	January 16, 2019
<b>Facilitator:</b>	J. D. Griffin	<b>Place/Room:</b>	Central Plant Conference Room

Name	Company	Phone	Fax	E-Mail
DARWIN KATAN	CML Security	210 440-3100		DKATAN@CMLSECURITY.US
Scott Twomey	Texas Building Controls	972- 524-2801		Scott@texasbuildingcontrols.com
Morgan Good	Tech Plan / Loftin Innovation	469-467-4014		mgood@tplan.com
John Wood	MOTOROLA SOLUTIONS	469-984-3951		John.Wood@MotorolaSolutions.com
Mike Gilliam	Miller Building Automation	469-340 1954		James@millerbldgautomation.com
Marie Charlotte Vera	Logix Fiber Netw	214- 915-4175		marie.vera@logix.com
Jenna Shadlowitz	Siemens	469 585 9951		jenna.shadlowitz@siemens.com
Sarah Hogsett	Logical Solutions	91437-5500		shogsett@lsicontrols.com
Daniel Tarver	Logical Solutions	91437-5500		dtarver@lsicontrols.com
Peter Macmillan	techplan / loftin	214 9140908		Pmacmillan@tplan.com
Rickey Harris	Collin County	X5343		rwarris@co.collin.tx.us
George King	Collin County	X5363		gking@co.collin.tx.us





**Place/Room:** Central Plant Conference Room

[illegible]





## Collin County Purchasing

### **2019-096 Addendum 1**

#### **Services, Controls Integrator**

Issue Date: 1/8/2019

Questions Deadline: 1/25/2019 03:00 PM (CT)

Response Deadline: 1/31/2019 02:00 PM (CT)

Collin County Purchasing

#### **Contact Information**

Contact: JD Griffin, CPPB Buyer II

Address: 2300 Bloomdale Rd.

Ste. 3160

Purchasing

Admin. Building

Ste.3160

McKinney, TX 75071

Phone: (972) 548-4116 x

Fax: (972) 548-4694 x

Email: [jgriffin@co.collin.tx.us](mailto:jgriffin@co.collin.tx.us)



## Event Information

Number: 2019-096 Addendum 1  
Title: Services, Controls Integrator  
Type: Request for Proposal - Other  
Issue Date: 1/8/2019  
Question Deadline: 1/25/2019 03:00 PM (CT)  
Response Deadline: 1/31/2019 02:00 PM (CT)  
Notes: Please login to view documents.

## Ship To Information

Address: See Purchase Order  
McKinney, TX 75071

## Billing Information

Address: 2300 Bloomdale Rd.  
Ste. 3100  
Auditor  
Admin. Building  
Ste. 3100  
McKinney, TX 75071

## Bid Activities

### Mandatory Pre-Proposal Conference

1/16/2019 10:00:00 AM (CT)

A mandatory pre-proposal conference will be conducted by Collin County on Wednesday, January 16, 2019 at 10:00 A.M. in the Collin County Central Plant 2nd Floor Conference Room, 4600 Community Ave, McKinney, TX 75071. This is to provide an opportunity for all interested contractors to ask questions, receive clarification and additional documentation and tour the facility. It is the offeror's responsibility to review the documents to gain a full understanding of the requirements of the RFP. All contractors desiring to submit a proposal should have a representative at the pre-proposal conference; contractors that do not attend the pre-proposal conference shall not be considered in the evaluation for award of a contract per Texas Local Government Code 262.0256. Attendance shall be mandatory at the pre-proposal conference.

### Intent to Submit Proposal

1/25/2019 5:00:00 PM (CT)

Do you intend to submit proposal?

## Bid Attachments

### Addendum 1\_2019-096.doc

Addendum 1

[View Online](#)

### LEGAL NOTICE\_2019-096.doc

Legal Notice

[Download](#)

### General\_Instructions\_Proposals.docx

General\_Instructions\_Proposals

[View Online](#)

### Terms\_of\_Contract\_Proposals.docx

Terms\_of\_Contract\_Proposals

[View Online](#)

### Insurance updated 1-26-2015.doc

Minimum Insurance Requirements

[View Online](#)

### 2019-096\_RFP Specifications.docx

RFP Specifications

[View Online](#)



**HB23 CIQ.docx**

Information Regarding Conflict of Interest Questionnaire

[View Online](#)**CIQ\_113015.pdf**

Conflict of Interest Questionnaire

[View Online](#)**HB89 Verification.docx**

HB89/Chapter 2270 Verification

[Download](#)**W9\_2014.pdf**

W-9

[View Online](#)**Attachment A-Control Room Screen Shots.pdf**

Attachment A-Control Room Screen Shots

[View Online](#)**Attachment B-Sign-In Sheet\_1-16-19.pdf**

Attachment B-Pre-Proposal Sign-In Sheet

[View Online](#)

## Requested Attachments

**Level 1 Requirement: Niagara and Tridium Certification***(Attachment required)***Proposal Response to Section 6.0***(Attachment required)***W-9***(Attachment required)***2270 Verification***(Attachment required)***Conflict of Interest Questionnaire**

## Bid Attributes

**1 eBid Notice**

Collin County exclusively uses IonWave Technologies, Inc. (Collin County eBid) for the notification and dissemination of all solicitations. The receipt of solicitations through any other means may result in your receipt of incomplete specifications and/or addendums which could ultimately render your bid/proposal non-compliant. Collin County accepts no responsibility for the receipt and/or notification of solicitations through any other means. Please initial.

*(Required: Maximum 1000 characters allowed)***2 Contact Information**

List the contact name, email address and phone number of the main person(s) Collin County should contact in reference to this solicitation. Contact(s) shall be duly authorized by the company, corporation, firm, partnership or individual to respond to any questions, clarification, and or offers in response to this solicitation.

*(Required: Maximum 4000 characters allowed)*



**3 Exceptions**

Do you take exceptions to the specifications. If so, by separate attachment, please state your exceptions.

☐ Yes ☐ No

(Required: Check only one)

**4 Insurance**

I understand that the insurance requirements of this solicitation are required and a certificate of insurance shall be submitted to the Purchasing department if I am awarded all or a portion of the resulting contract. Please initial.

---

---

---

(Required: Maximum 1000 characters allowed)

**5 Subcontractors**

State the business name of all subcontractors and the type of work they will be performing under this contract. If you are fully qualified to self-perform the entire contract, please respond with "Not Applicable-Self Perform".

---

---

---

---

---

---

(Required: Maximum 4000 characters allowed)

**6 Reference No. 1**

List a company or governmental agency where these same/like products /services, as stated herein, have been provided. Texas references preferred. Include the following: Company/Entity, Contact, Address, City/State/Zip, Phone, and E-Mail.

---

---

---

---

---

---

(Required: Maximum 4000 characters allowed)

**7 Reference No. 2**

List a company or governmental agency where these same/like products /services, as stated herein, have been provided. Texas references preferred. Include the following: Company/Entity, Contact, Address, City/State/Zip, Phone, and E-Mail.

---

---

---

---

---

---

(Required: Maximum 4000 characters allowed)



**8 Reference No. 3**

List a company or governmental agency where these same/like products /services, as stated herein, have been provided. Texas references preferred. Include the following: Company/Entity, Contact, Address, City/State/Zip, Phone, and E-Mail.

---

---

---

---

---

---

(Required: Maximum 4000 characters allowed)

**9 Cooperative Contracts**

As permitted under Title 8, Chapter 271, Subchapter F, Section 271.101 and 271.102 V.T.C.A. and Title 7, Chapter 791, Subchapter C, Section 791.025, V.T.C.A., other local governmental entities may wish to also participate under the same terms and conditions contained in this contract. Each entity wishing to participate must enter into an inter-local agreement with Collin County and have prior authorization from vendor. If such participation is authorized, all purchase orders will be issued directly from and shipped directly to the local governmental entity requiring supplies/services. Collin County shall not be held responsible for any orders placed, deliveries made or payment for supplies/services ordered by these entities. Each entity reserves the right to determine their participation in this contract. Would bidder be willing to allow other local governmental entities to participate in this contract, if awarded, under the same terms and conditions?

☐ Yes ☐ No

(Required: Check only one)

**10 Preferential Treatment**

The County of Collin, as a governmental agency of the State of Texas, may not award a contract to a nonresident bidder unless the nonresident's bid is lower than the lowest bid submitted by a responsible Texas resident bidder by the same amount that a Texas resident bidder would be required to underbid a nonresident bidder to obtain a comparable contract in the state in which the nonresident's principal place of business is located (Government Code, Title 10, V.T.C.A., Chapter 2252, Subchapter A). 1. Is your principal place of business in the State of Texas? 2. If your principal place of business is not in Texas, in which State is your principal place of business? 3. If your principal place of business is not in Texas, does your state favor resident bidders (bidders in your state) by some dollar increment or percentage? 4. If your state favors resident bidders, state by what dollar amount or percentage.

---

---

---

---

---

---

(Required: Maximum 4000 characters allowed)

**11 Debarment Certification**

I certify that neither my company nor an owner or principal of my company has been debarred, suspended or otherwise made ineligible for participation in Federal Assistance programs under Executive Order 12549, "Debarment and Suspension," as described in the Federal Register and Rules and Regulations. Please initial.

---

---

---

(Required: Maximum 1000 characters allowed)



**1**  
**2** **Immigration and Reform Act**

I declare and affirm that my company is in compliance with the Immigration and Reform Act of 1986 and all employees are legally eligible to work in the United States of America. I further understand and acknowledge that any non-compliance with the Immigration and Reform Act of 1986 at any time during the term of this contract will render the contract voidable by Collin County. Please initial.

\_\_\_\_\_  
\_\_\_\_\_  
\_\_\_\_\_  
(Required: Maximum 1000 characters allowed)

**1**  
**3** **Disclosure of Certain Relationships**

Chapter 176 of the Texas Local Government Code requires that any vendor considering doing business with a local government entity disclose the vendor's affiliation or business relationship that might cause a conflict of interest with a local government entity. Subchapter 6 of the code requires a vendor to file a conflict of interest questionnaire (CIQ) if a conflict exists. By law this questionnaire must be filed with the records administrator of Collin County no later than the 7th business day after the date the vendor becomes aware of an event that requires the statement to be filed. A vendor commits an offense if the vendor knowingly violates the code. An offense under this section is a misdemeanor. By submitting a response to this request, the vendor represents that it is in compliance with the requirements of Chapter 176 of the Texas Local Government Code. Please send completed forms to the Collin County County Clerk's Office located at 2300 Bloomdale Rd., Suite 2104, McKinney, TX 75071. Please initial.

\_\_\_\_\_  
\_\_\_\_\_  
\_\_\_\_\_  
(Required: Maximum 1000 characters allowed)

**1**  
**4** **Anti-Collusion Statement**

Bidder certifies that its Bid/Proposal is made without prior understanding, agreement, or connection with any corporation, firm, or person submitting a Bid/Proposal for the same materials, services, supplies, or equipment and is in all respects fair and without collusion or fraud. No premiums, rebates or gratuities permitted; either with, prior to, or after any delivery of material or provision of services. Any such violation may result in Agreement cancellation, return of materials or discontinuation of services and the possible removal from bidders list. Please initial.

\_\_\_\_\_  
\_\_\_\_\_  
\_\_\_\_\_  
(Required: Maximum 1000 characters allowed)

**1**  
**5** **Disclosure of Interested Parties**

Section 2252.908 of the Texas Government Code requires a business entity entering into certain contracts with a governmental entity to file with the governmental entity a disclosure of interested parties at the time the business entity submits the signed contract to the governmental entity. Section 2252.908 requires the disclosure form (Form 1295) to be signed by the authorized agent of the contracting business entity, acknowledging that the disclosure is made under oath and under penalty of perjury. Section 2252.908 applies only to a contract that requires an action or vote by the governing body of the governmental entity before the contract may be signed or has a value of at least \$1 million. Section 2252.908 provides definitions of certain terms occurring in the section. Section 2252.908 applies only to a contract entered into on or after January 1, 2016. Please initial.

\_\_\_\_\_  
\_\_\_\_\_  
\_\_\_\_\_  
(Required: Maximum 1000 characters allowed)



1  
6**Notification Survey**

In order to better serve our offerors, the Collin County Purchasing Department is conducting the following survey. We appreciate your time and effort expended to submit your bid. Should you have any questions or require more information please call (972) 548-4165. How did you receive notice of this request?

☐ Plano Star Courier   ☐ Plan Room   ☐ Collin County eBid Notification   ☐ Collin County Website  
☐ Other

(Required: Check only one)

1  
7**Cooperative Contract Name**

State the cooperative contract name this quote is offered under. (i.e. TX DIR, TXMAS, TCPN, National IPA, Buyboard, TIPS/TAPS, etc.) If none, answer N/A.

---

---

---

---

---

---

(Required: Maximum 4000 characters allowed)

1  
8**Cooperative Contract Number**

State the cooperative contract number this quote is offered under. If none, answer N/A.

---

---

---

---

---

---

(Required: Maximum 4000 characters allowed)

1  
9**Cooperative Contract Website**

Please provide the website URL for the cooperative contract this quote is offered under. If none, answer N/A.

---

---

---

---

(Required: Maximum 1000 characters allowed)

2  
0**Proposer Acknowledgement**

Proposer acknowledges, understands the specifications, any and all addenda, and agrees to the proposal terms and conditions and can provide the minimum requirements stated herein. Offeror acknowledges they have read the document in its entirety, visited the site, performed investigations and verifications as deemed necessary, is familiar with local conditions under which work is to be performed and will be responsible for any and all errors in Proposal submittal resulting from Proposer's failure to do so. Proposer acknowledges the prices submitted in this Proposal have been carefully reviewed and are submitted as correct and final. If Proposal is accepted, vendor further certifies and agrees to furnish any and all products/services upon which prices are extended at the price submitted, and upon conditions in the specifications of the Request for Proposal. Please initial.

---

---

---

---

(Required: Maximum 1000 characters allowed)



2  
1

### Addendum No. 1 Acknowledgement

Please initial to verify your receipt of the addendum.

---

---

---

(Required: Maximum 1000 characters allowed)

## Bid Lines

1

### State Hourly Rate for Services-Integrator

(Response required)

Quantity:   1   UOM:  hour  Unit price: \$  Total: \$

Item Notes: Refer to Section 6.8.1

Supplier Notes: 

---

---

☐ No bid  
☐ Additional notes  
(Attach separate sheet)

2

### State percentage mark-up above actual cost to contractor for any parts furnished.

(Response required)

Total:  %

Item Notes: Refer to Section 6.8.2

Supplier Notes: 

---

---

☐ No bid  
☐ Additional notes  
(Attach separate sheet)



Supplier Information

Company Name: \_\_\_\_\_

Contact Name: \_\_\_\_\_

Address: \_\_\_\_\_

\_\_\_\_\_

\_\_\_\_\_

\_\_\_\_\_

Phone: \_\_\_\_\_

Fax: \_\_\_\_\_

Email: \_\_\_\_\_

Supplier Notes

\_\_\_\_\_

\_\_\_\_\_

\_\_\_\_\_

\_\_\_\_\_

\_\_\_\_\_

\_\_\_\_\_

\_\_\_\_\_

\_\_\_\_\_

The undersigned hereby certifies the foregoing proposal submitted by the company listed below hereinafter called “offeror” is the duly authorized agent of said company and the person signing said proposal has been duly authorized to execute same. Offeror affirms that they are duly authorized to execute this contract; this company; corporation, firm, partnership or individual has not prepared this proposal in collusion with any other offeror or other person or persons engaged in the same line of business; and that the contents of this proposal as to prices, terms and conditions of said proposal have not been communicated by the undersigned nor by any employee or agent to any other person engaged in this type of business prior to the official opening of this proposal.

Print Name

Signature