



COLLIN COUNTY

Office of the Purchasing Agent
2300 Bloomdale Road
Suite 3160
McKinney, Texas 75071
www.collincountytx.gov

COLLIN COUNTY, TEXAS

ADDENDUM No. One (1)

IFB No. 2019-084

INVITATION FOR BID

FOR

CONSTRUCTION, COLLIN COUNTY JUSTICE CENTER, REPLACEMENT OF CHILLED WATER ACTUATORS AND VALVES

DATE: JANUARY 25, 2019

NOTICE TO ALL PROSPECTIVE BIDDERS:

PLEASE MAKE THE FOLLOWING CHANGES TO THE INVITATION FOR BID:

CHANGE QUESTION DEADLINE: FROM: JANUARY 25, 2019 AT 3:00 PM
TO: JANUARY 30, 2019 AT 3:00 PM

CHANGE INTENT TO BID DEADLINE: FROM: JANUARY 25, 2019 AT 5:00 PM
TO: FEBRUARY 1, 2019 AT 5:00 PM

CHANGE BID DUE DATE: FROM: JANUARY 31, 2019 AT 2:00 PM
TO: FEBRUARY 7, 2019 AT 2:00 PM

ADD DOCUMENT: JANUARY 17, 2019 PRE-BID SIGN-IN SHEET

ADD DOCUMENT: ATTACHMENT A, PRE-BID CLARIFICATIONS

ADD DOCUMENT: ATTACHMENT B, ISOLATION VALVE LOCATIONS

ADD DOCUMENT: SECTION 23 21 13

REVISE LINE ITEM 1: ADD UNIT PRICING

ADD ATTRIBUTE: #19-ADDENDUM 1 ACKNOWLEDGEMENT

DELETE DOCUMENT: SECTION 004100-BID FORM

REPLACE WITH: SECTION 004100-BID FORM ADDENDUM 1

ALL OTHER TERMS AND CONDITIONS OF THE BID AND SPECIFICATIONS REMAIN THE SAME.

SINCERELY,
MICHALYN RAINS, CPPO, CPPB
PURCHASING AGENT

JDG



IFB# 2019-084 MANDATORY PRE-BID SIGN-IN SHEET

Project:	Construction, Collin County Justice Center, Replacement of Chilled Water Actuators and Valves	Meeting Date:	January 17, 2019
Facilitator:	J. D. Griffin	Place/Room:	Collin County Justice Center Jail Lobby

Name	Company	Phone	Fax	E-Mail
DON HOOVER	DH1 / DECKER MECHANICAL	469.446.6153	972.293.1068	dhoover@deckermechanical.com
Brian Mansur	Expert Services	352.3898		bmansur@theexpertservice.com
Jim Nix	ABM Building Services	832.361-3965		jimnix@abm.com
Stan Granger	ABM " "	214.984.1585		stan.granger@abm.com
Scott Twomey	Texas Building Cont.	972-524-2801		Scott@texasbuildingcontrols.com
Michael Smith	MD ENGINEERING	469-467-0200		msmith@md-eng.com
Brad Harris	Collin County	972-547-5492		bjharris@co.collin.tx.us
LAZ VADASZ	CC	5332		lvadas2@co.collin.tx.us
Kenny Gardner	Collin County	4124		kgardner@co.collin.tx.us
J.D. Griffin	Collin Co.			

Attachment A

1/17/2019 Pre-Bid Conference Clarifications

- 1.) Standard working business hours are Monday through Friday, 7:00 AM to 4:00 PM.
- 2.) The contractor's schedule shall be based the following; 1.) install the shut off valves on mains first 2.) then start scope of work on one AHU at a time until completed 3.) then go to the next unit.
- 3.) Background checks are required by the Sheriff's Department.
- 4.) Facilities Maintenance will escort contractors in the mechanical rooms and the Sheriff's Office area.
- 5.) Per the Facilities Maintenance department; there are two different configurations for valves on the nineteen air handler units.
- 6.) This project scope of work does not require any new HVAC controls.
- 7.) For the record; The attending contractors were shown five air handler units in two locations. After leaving the second location all contractors declined to view the remaining fourteen air handler units.

- 8.) Adding shutoff valves, type, locations and freeze method to install:

The contractor shall plan on installing new shut off valves in the mechanical rooms (to allow for isolation of groups of air handlers). The mechanical rooms that require the addition of isolation valves are indicated on the sketches provided (Refer to Attachment B). All other mechanical rooms have isolation valves outside the mechanical rooms or positioned to isolate the mechanical rooms/air handling units. It is understood that this will require nitrogen pipe freeze at a total of six locations of 3" pipe for the installation of a total of twelve (12) 3" butterfly valves for cluster 1, 3, and 5. Final location of the valves will be require coordination and be agreed to with Collin County facilities

- 9.) Unit Price Details- Pipes, Valves, Insulation type and sizes:

Contractor shall provide unit price per foot (material and labor) for copper and steel pipe, fittings, insulation and valves for 1-1/2", 2", 2-1/2", 3", 4", 6", and 8". The pipe and valves are specified in section 23 21 13 and the insulation is specified in 23 07 00. This unit pricing is requested to assist the county in analyzing work required for any unforeseen conditions. (Refer to Addendum 1, Line Item 1, Unit Pricing)

Attachment A

10.) Insulation work inside the units with the specified type of insulation per energy code/Facilities Maintenance:

Provide 1" closed cell insulation with a thermal conductivity (BTU in/ft²hrF) of 0.230 with flammability and smoke spread rating of 25/50 on all new pipe inside air handling units as outlined in specification section 23 07 00-2, paragraph 2.1.A.2

11.) Note contractor's responsibility to coordinate new valve setup with test and balance:

Contractor to coordinate with Testing and Balancing (TAB) contractor, who is provided by Collin County, and assist in TAB process as outlined in specification section 23 05 93

12.) Valve positioning per Facilities Maintenance:

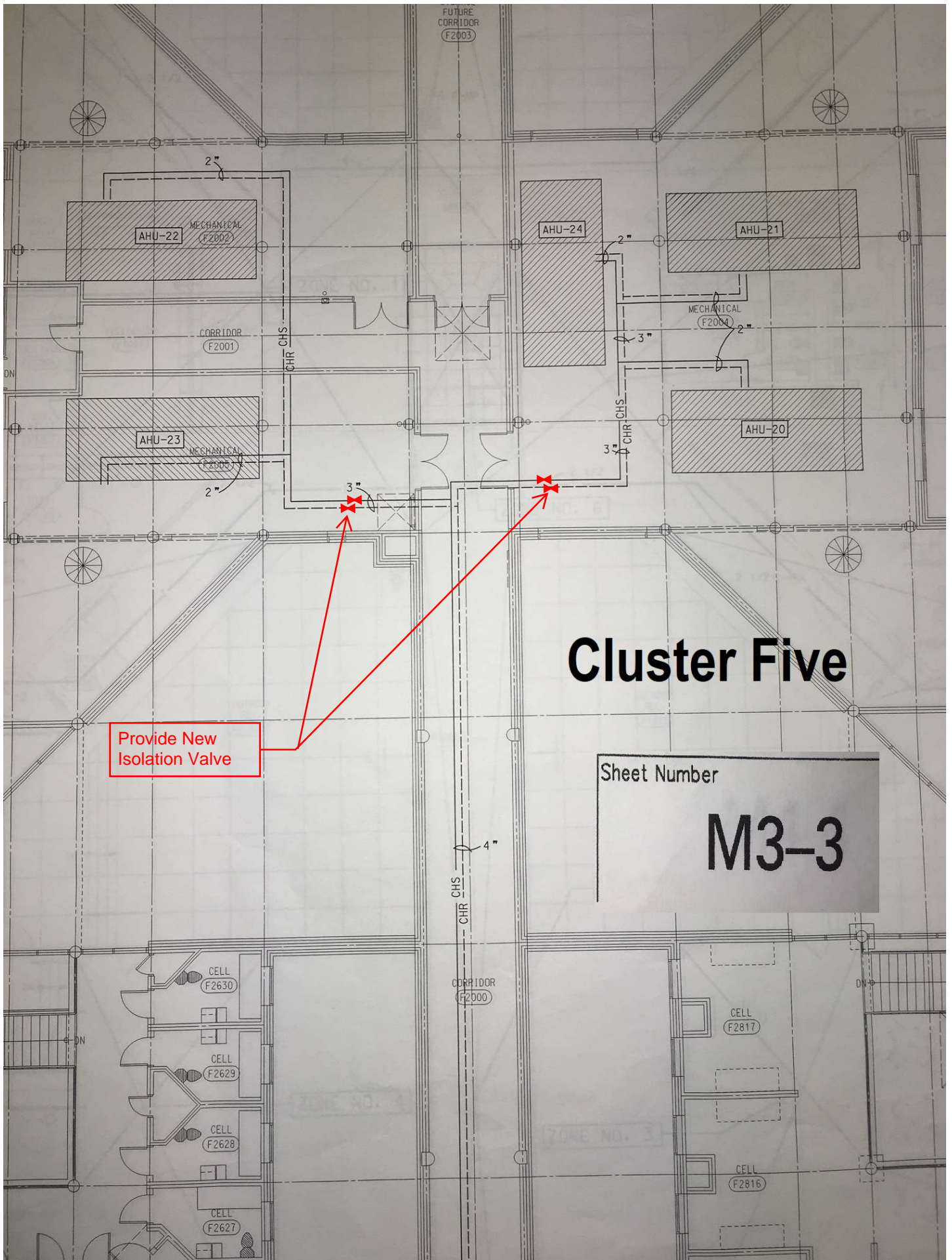
Because controls integration is a separate contract, awarded contractor will be responsible for setting the new control valve in a position indicated by Collin County Facilities for this project. It is understood that control of the valve is not part of this contract.

13.) Fittings Specification and details:

Contractor to refer to specification section 23 21 13 Hydronic Piping for specification of fittings. This specification states that for valves 2" and smaller utilize ball valves and for piping 2 1/2" or larger utilize butterfly valves. (Refer to Addendum 1, Section 23 21 13)

Sheet Number

M3-17



Provide New Isolation Valve

Cluster Five

Sheet Number
M3-3

SECTION 23 21 13 – HYDRONIC PIPING

PART 1 - GENERAL

1.1 RELATED DOCUMENTS

- A. The Drawings and General Provisions of the Contract, including General and Supplementary Conditions and Division 01 Specification Sections, apply to the Work in this Section

1.2 SUMMARY

- A. Provide all equipment, materials, labor, supervision, and services necessary for or incidental to the installation of all necessary identification items as indicated on the drawings and as specified.
- B. Work included:
 - 1. Pipe hangers and supports.
 - 2. Sleeving for mechanical equipment.
- C. Submittals: Provide submittals as required in Section 23 0500 "Common Work Results for HVAC".

1.3 QUALITY ASSURANCE

- A. Use adequate numbers of skilled workmen who are thoroughly trained and experienced in the necessary crafts and who are completely familiar with the specified requirements and the methods needed for proper performance of the work of this Section.
- B. Without additional cost to the Owner, provide such other labor and materials as are required to complete the work of this Section in accordance with the requirements of governmental agencies having jurisdiction, regardless of whether such materials and associated labor are called for elsewhere in these Contract Documents.

1.4 SUBMITTALS:

- A. **Provide submittals as required in Section 23 00 10, "Submittal Process".**

PART 2 - PRODUCTS

2.1 PIPE

- A. Chilled Water (above ground),
 - 1. Steel: ASTM A53 Grade B, seamless or ERW, Schedule 40.
 - 2. Copper water tube option: ASTM B88, Type K or L, hard drawn.

2.2 FITTINGS FOR STEEL PIPE

- A. 2-1/2 inches and Larger: Welded or flanged joints. Mechanical couplings and fittings are optional..
 - 1. Butt welding fittings: ASME B16.9 with same wall thickness as connecting piping. Elbows shall be long radius type, unless otherwise noted.
 - 2. Welding flanges and bolting: ASME B16.5:
 - a. Weld neck or slip-on, plain face, with 1/8 inch thick full face neoprene gasket.
 - 1) Contractor's option: Convolute, cold formed 150 pound steel flanges, with teflon gaskets.
 - b. Flange bolting: Carbon steel machine bolts or studs and nuts, ASTM A307, Grade B.
- B. 2 inches and Smaller: Screwed or welded. Mechanical couplings are optional for water piping only.
 - 1. Butt welding: ASME B16.9 with same wall thickness as connecting piping.
 - 2. Forged steel, socket welding or threaded: ASME B16.11.

3. Screwed: 150 pound malleable iron, ASME B16.3. 125 pound cast iron, ASME B16.4, may be used in lieu of malleable iron. Bushing reduction of a single pipe size, or use of close nipples, is not acceptable.
4. Unions: ASME B16.39.
5. Water hose connection adapter: Brass, pipe thread to 3/4 inch garden hose thread, with hose cap nut.
- C. Welded Branch and Tap Connections: Forged steel weldolets, or branchlets and threadolets may be used for branch connections up to one pipe size smaller than the main. Forged steel half-couplings, ASME B16.11 may be used for drain, vent and gage connections.
- D. Mechanical Pipe Couplings and Fittings: May be used, with cut or roll grooved pipe, in water service up to 230 degrees F in lieu of welded, screwed or flanged connections.
 1. Grooved mechanical couplings: Malleable iron, ASTM A47 or ductile iron, ASTM A536, fabricated in two or more parts, securely held together by two or more track-head, square, or oval-neck bolts, ASTM A183.
 2. Gaskets: Rubber product recommended by the coupling manufacturer for the intended service.
 3. Grooved end fittings: Malleable iron, ASTM A47; ductile iron, ASTM A536; or steel, ASTM A53 or A106, designed to accept grooved mechanical couplings. Tap-in type branch connections are acceptable.

2.3 FITTINGS FOR COPPER TUBING

- A. Solder Joint:
 1. Joints shall be made up in accordance with recommended practices of the materials applied. Apply 95/5 tin and antimony on all copper piping.
 2. Mechanically formed tee connection in water and drain piping: Form mechanically extracted collars in a continuous operation by drilling pilot hole and drawing out tube surface to form collar, having a height of not less than three times the thickness of tube wall. Adjustable collaring device shall insure proper tolerance and complete uniformity of the joint. Notch and dimple joining branch tube in a single process to provide free flow where the branch tube penetrates the fitting.
- B. Bronze Flanges and Flanged Fittings: ASME B16.24.

2.4 SCREWED JOINTS

- A. Pipe Thread: ANSI B1.20.
- B. Lubricant or Sealant: Oil and graphite or other compound approved for the intended service.

2.5 VALVES

- A. Asbestos packing is not acceptable.
- B. All valves of the same type shall be products of a single manufacturer. Provide gate and globe valves with packing that can be replaced with the valve under full working pressure.
- C. Provide chain operators for valves 4 inches and larger when the centerline is located 8 feet or more above the floor or operating platform.
- D. Gate Valves:
 1. 2 inches and smaller: MSS-SP80, Bronze, 150 lb, wedge disc, rising stem, union bonnet.
 2. 2 1/2 inches and larger: Flanged, outside screw and yoke.
 - a. MSS-SP 70, iron body, bronze mounted, 125 psig wedge disc.
- G. Butterfly Valves: May be used in lieu of gate valves. Provide stem extension to allow 2 inches of pipe insulation without interfering with valve operation.
 1. MSS-SP 67, flange lug type (for end of line service) or grooved end rated 175 psig working pressure at 200 degrees F.
 - a. Body: Cast iron, ASTM A126, Class B. Malleable iron, ASTM A47 electro-plated, or ductile iron, ASTM A536, Grade 65-45-12 electro-plated.
 - b. Trim: Bronze, aluminum bronze, or 300 series stainless steel disc, bronze bearings, 316 stainless steel shaft and manufacturer's recommended resilient seat. Resilient seat shall be field replaceable, and fully line the body to completely isolate the body from the product. A phosphate coated steel shaft or stem is acceptable, if the stem is completely isolated from the product.

- c. Actuators: Field interchangeable. Valves for balancing service shall have adjustable memory stop to limit open position.
 - 1) Valves 6 inches and smaller: Lever actuator with minimum of seven locking positions, except where chain wheel is required.
 - 2) Valves 8 inches and larger: Enclosed worm gear with handwheel, and where required, chain-wheel operator.
 - H. Ball Valves: Brass or bronze body with chrome-plated ball with full port and Teflon seat at 400 psig working pressure rating. Screwed or solder connections. Provide stem extension to allow operation without interfering with pipe insulation.
 - I. Water Flow Balancing Valves: For flow regulation and shut-off. Valves shall be line size rather than reduced to control valve size and be one of the following types.
 - 1. Butterfly valve as specified herein with memory stop.
 - 2. Eccentric plug valve: Iron body, bronze or nickel-plated iron plug, bronze bearings, adjustable memory stop, operating lever, rated 125 psig and 250 degrees F.
 - J. Circuit Setter Valve: A dual purpose flow balancing valve and adjustable flow meter, with bronze or cast iron body, calibrated position pointer, valved pressure taps or quick disconnects with integral check valves and preformed polyurethane insulating enclosure. Provide a readout kit including flow meter, readout probes, hoses, flow charts or calculator, and carrying case.
 - K. Automatic Balancing Control Valves: Factory calibrated to maintain constant flow (plus or minus five percent) over system pressure fluctuations of at least 10 times the minimum required for control. Provide standard pressure taps and four sets of capacity charts. Valves shall be line size and be one of the following designs:
 - 1. Gray iron (ASTM A126) or brass body rated 175 psig at 200 degrees F, with stainless steel piston and spring.
 - 2. Brass or ferrous body designed for 300 psig service at 250 degrees F, with corrosion resistant, tamper proof, self-cleaning piston/spring assembly that is easily removable for inspection or replacement.
 - 3. Combination assemblies containing ball type shut-off valves, unions, flow regulators, strainers with blowdown valves and pressure temperature ports shall be acceptable.
 - 4. Provide a readout kit including flow meter, probes, hoses, flow charts and carrying case.
 - L. Manual Convactor Valves: Brass, packless, with position indicator.
- 2.6 STRAINERS**
- A. Basket or Y Type. Tee type is acceptable for water service.
 - B. Screens: Bronze, monel metal or 18-8 stainless steel, free area not less than 2-1/2 times pipe area, with perforations as follows: 0.045 inch diameter perforations.
 - 2. 100 mm (4 inches) and larger: 0.125 inch diameter perforations.
- 2.7 GAGES, PRESSURE AND COMPOUND**
- A. ASME B40.100, Accuracy Grade 1A, (pressure, vacuum, or compound for air, oil or water), initial mid-scale accuracy 1 percent of scale (Qualify grade), metal or phenolic case, 4-1/2 inches in diameter, 1/4 inch NPT bottom connection, white dial with black graduations and pointer, clear glass or acrylic plastic window, suitable for board mounting. Provide red "set hand" to indicate normal working pressure.
 - B. Provide brass lever handle union cock. Provide brass/bronze pressure snubber for gages in water service.
 - C. Range of Gages: Provide range equal to at least 130 percent of normal operating range.
- 2.8 PRESSURE/TEMPERATURE TEST PROVISIONS**
- A. Pete's Plug 1/4 inch MPT by 3 inches long, brass body and cap, with retained safety cap, nordel self-closing valve cores, permanently installed in piping where shown, or in lieu of pressure gage test connections shown on the drawings.
 - B. Provide one each of the following test items to the PM/COTR:
 - 1. 1/4 inch FPT by 1/8 inch diameter stainless steel pressure gage adapter probe for extra long test plug. PETE'S 500 XL is an example.
 - 2. 3-1/2 inch diameter, one percent accuracy, compound gage, , —30 inches Hg to 100 psig range.

3. 0 - 220 degrees F pocket thermometer one-half degree accuracy, one inch dial, 5 inch long stainless steel stem, plastic case.

2.9 THERMOMETERS

- A. Mercury or organic liquid filled type, red or blue column, clear plastic window, with 150 mm (6 inch) brass stem, straight, fixed or adjustable angle as required for each in reading.
- B. Case: Chrome plated brass or aluminum with enamel finish.
- C. Scale: Not less than 9 inches, range as described below, two degree graduations.
- D. Separable Socket (Well): Brass, extension neck type to clear pipe insulation.
- E. Scale ranges may be slightly greater than shown to meet manufacturer's standard. Required ranges in degrees C (F):

Chilled Water 32-100 degrees F	Hot Water 30 to 240 degrees F.
--------------------------------	--------------------------------

PART 3 - EXECUTION

3.1 GENERAL

- A. The drawings show the general arrangement of pipe and equipment but do not show all required fittings and offsets that may be necessary to connect pipes to equipment, fan-coils, coils, convectors, etc., and to coordinate with other trades. Provide all necessary fittings, offsets and pipe runs based on field measurements and at no additional cost to the government. Coordinate with other trades for space available and relative location of HVAC equipment and accessories to be connected on ceiling grid. Pipe location on the drawings shall be altered by contractor where necessary to avoid interferences and clearance difficulties.
- B. Store materials to avoid excessive exposure to weather or foreign materials. Keep inside of piping relatively clean during installation and protect open ends when work is not in progress.
- C. Install piping generally parallel to walls and column center lines, unless shown otherwise on the drawings. Space piping, including insulation, to provide one inch minimum clearance between adjacent piping or other surface. Unless shown otherwise, slope drain piping down in the direction of flow not less than one inch in 40 feet. Provide eccentric reducers to keep bottom of sloped piping flat.
- D. Locate and orient valves to permit proper operation and access for maintenance of packing, seat and disc. Generally locate valve stems in overhead piping in horizontal position. Provide a union adjacent to one end of all threaded end valves. Control valves usually require reducers to connect to pipe sizes shown on the drawing. Install butterfly valves with the valve open as recommended by the manufacturer to prevent binding of the disc in the seat.
- E. Offset equipment connections to allow valving off for maintenance and repair with minimal removal of piping.
- F. Tee water piping runouts or branches into the side of mains or other branches. Avoid bull-head tees, which are two return lines entering opposite ends of a tee and exiting out the common side.
- G. Provide manual air vent at all piping system high points and drain valves at all low points.
- H. Thermometer Wells: In pipes 65 mm (2-1/2 inches) and smaller increase the pipe size to provide free area equal to the upstream pipe area.

3.2 PIPE JOINTS

- A. Welded: Beveling, spacing and other details shall conform to ASME B31.1 and AWS B2.1. See Welder's qualification requirements under "Quality Assurance" in Section 23 05 11, COMMON WORK RESULTS FOR HVAC AND STEAM SYSTEMS.
- B. Screwed: Threads shall conform to ASME B1.20; joint compound shall be applied to male threads only and joints made up so no more than three threads show. Coat exposed threads on steel pipe with joint compound, or red lead paint for corrosion protection.
- C. Mechanical Joint: Pipe grooving shall be in accordance with joint manufacturer's specifications. Lubricate gasket exterior including lips, pipe ends and housing interiors to prevent pinching the gasket during installation. Lubricant shall be as recommended by coupling manufacturer.
- D. 125 Pound Cast Iron Flange (Plain Face): Mating flange shall have raised face, if any, removed to avoid overstressing the cast iron flange.

E. Solvent Welded Joints: As recommended by the manufacturer.

3.3 FLUSHING AND CLEANING PIPING SYSTEMS

A. Water Piping: Clean systems as recommended by the suppliers of chemicals specified in Section 23 25 00, HVAC WATER TREATMENT.

1. Initial flushing: Remove loose dirt, mill scale, metal chips, weld beads, rust, and like deleterious substances without damage to any system component. Provide temporary piping or hose to bypass coils, control valves, exchangers and other factory cleaned equipment unless acceptable means of protection are provided and subsequent inspection of hide-out areas takes place. Isolate or protect clean system components, including pumps and pressure vessels, and remove any component which may be damaged. Open all valves, drains, vents and strainers at all system levels. Remove plugs, caps, spool pieces, and components to facilitate early debris discharge from system. Sectionalize system to obtain debris carrying velocity of 6 feet per second, if possible. Connect dead-end supply and return headers as necessary. Flush bottoms of risers. Install temporary strainers where necessary to protect down-stream equipment. Supply and remove flushing water and drainage by various type hose, temporary and permanent piping and Contractor's booster pumps. Flush until clean as approved by the Owner and Engineer.
2. Cleaning: Circulate cleaning products in systems at normal temperature to remove adherent organic soil, hydrocarbons, flux, pipe mill varnish, pipe joint compounds, iron oxide, and like deleterious substances not removed by flushing, without chemical or mechanical damage to any system component. Removal of tightly adherent mill scale is not required. Keep isolated equipment which is "clean" and where dead-end debris accumulation cannot occur. Sectionalize system if possible, to circulate at velocities not less than 16 feet per second. Circulate each section for not less than four hours. Blow-down all strainers, or remove and clean as frequently as necessary. Drain and prepare for final flushing.
3. Final Flushing: Return systems to conditions required by initial flushing after all cleaning solution has been displaced by clean make-up. Flush all dead ends and isolated clean equipment. Gently operate all valves to dislodge any debris in valve body by throttling velocity. Flush for not less than one hour.

END OF SECTION

THIS PAGE INTENTIONALLY BLANK



Collin County Purchasing

2019-084 Addendum 1

Construction, Collin County Justice Center, Replacement of Chilled Water Actuators and Valves

Issue Date: 1/8/2019

Questions Deadline: 1/30/2019 03:00 PM (CT)

Response Deadline: 2/7/2019 02:00 PM (CT)

Collin County Purchasing

Contact Information

Contact: JD Griffin, CPPB Buyer II

Address: 2300 Bloomdale Rd.

Ste. 3160

Purchasing

Admin. Building

Ste.3160

McKinney, TX 75071

Phone: (972) 548-4116 x

Fax: (972) 548-4694 x

Email: jgriffin@co.collin.tx.us

Event Information

Number: 2019-084 Addendum 1
Title: Construction, Collin County Justice Center, Replacement of Chilled Water Actuators and Valves
Type: Invitation for Bid - Construction
Issue Date: 1/8/2019
Question Deadline: 1/30/2019 03:00 PM (CT)
Response Deadline: 2/7/2019 02:00 PM (CT)
Notes: Please log in to view bid documents.

Ship To Information

Address: 4300 Community Ave.
Justice Center
McKinney, TX 75071

Billing Information

Address: 2300 Bloomdale Rd.
Ste. 3100
Auditor
Admin. Building
Ste. 3100
McKinney, TX 75071

Bid Activities

Mandatory Pre-Bid Conference

1/17/2019 10:00:00 AM (CT)

A MANDATORY PRE-BID CONFERENCE will be held by Collin County at Collin County Justice Center Jail Lobby, 4300 Community Ave., McKinney, TX 75071 on Thursday, January 17, 2019, at 10:00 AM in order for bidders to ask questions regarding the proposed work. All bidders desiring to bid the work should have a representative at the pre-bid conference; bidders that do not attend the pre-bid conference shall not be considered in the evaluation for award of a contract per Texas Local Government Code 262.0256. Attendance shall be mandatory at the pre-bid conference.

Intent to Bid

2/1/2019 5:00:00 PM (CT)

Do you intend to submit a bid?

Bid Attachments

Addendum 1_2019-084.doc

Addendum 1

[View Online](#)

LEGAL NOTICE-2019-084.doc

Legal Notice

[Download](#)

CCCJ Replacement of Chilled Water Actuators and Valves Specs.pdf

Specifications

[View Online](#)

CCCJ Replacement of Chilled Water Actuators and Valves_Plans.pdf

Plans

[View Online](#)

Sign In Sheet.pdf

Pre-Bid Sign-In Sheet

[View Online](#)

Attachment A.docx

Attachment A

[View Online](#)

Attachment B.pdf

Attachment B

[View Online](#)

Requested Attachments

Bid Bond

(Attachment required)

BID SECURITY: All Bidders must submit, prior to the bid opening time, a certified check, Cashier's Check or acceptable Bid Bond payable without recourse to Collin County in the amount of not less than five percent (5%) of the total bid plus alternates as submitted. 1. Bid Bond, certified check or Cashier's Check may be mailed or hand delivered to the Office of the Collin County Purchasing Agent, Collin County Administration Building, 2300 Bloomdale Road, Ste 3160, McKinney, TX 75071 and shall be delivered in an envelope, marked plainly on the outside with the Bid Name and Number. 2. Bidders submitting a bid via Collin County eBid shall upload a Bid Bond at <https://collincountytx.ionwave.net> Regardless of delivery method, all Bid Bonds shall be received prior to the bid opening time to be considered. Failure to submit a copy of bid security prior to bid opening shall be cause for rejection of bid. The original Bid Bond shall be received in the Collin County Purchasing Department no later than close of business on the third working day after the bid opening. Late receipt of original Bid Bond shall be cause for rejection of bid.

2270 Verification

(Attachment required)

W-9

(Attachment required)

Conflict of Interest Questionnaire

Bid Attributes

1 eBid Notice

Collin County exclusively uses IonWave Technologies, Inc. (Collin County eBid) for the notification and dissemination of all solicitations. The receipt of solicitations through any other means may result in your receipt of incomplete specifications and/or addendums which could ultimately render your bid/proposal non-compliant. Collin County accepts no responsibility for the receipt and/or notification of solicitations through any other means. Please initial.

(Required: Maximum 1000 characters allowed)

2 Contact Information

List the contact name, email address and phone number of the main person(s) Collin County should contact in reference to this solicitation. Contact(s) shall be duly authorized by the company, corporation, firm, partnership or individual to respond to any questions, clarification, and or offers in response to this solicitation.

(Required: Maximum 4000 characters allowed)

3 Calendar Days Bid

Bidder shall state the consecutive calendar days required to complete all work following a notice to proceed.

(Required: Numbers only)

4 Exceptions

Do you take exceptions to the specifications. If so, by separate attachment, please state your exceptions.

☐ Yes ☐ No

(Required: Check only one)

5 Insurance

I understand that the insurance requirements of this solicitation are required and a certificate of insurance shall be submitted to the Purchasing department if I am awarded all or a portion of the resulting contract. Please initial.

(Required: Maximum 1000 characters allowed)

6 Subcontractors

State the business name of all subcontractors and the type of work they will be performing under this contract. If you are fully qualified to self-perform the entire contract, please respond with "Not Applicable-Self Perform".

(Required: Maximum 4000 characters allowed)

7 Reference No. 1

List a company or governmental agency where these same/like products /services, as stated herein, have been provided. Texas references preferred. Include the following: Company/Entity, Contact, Address, City/State/Zip, Phone, and E-Mail.

(Required: Maximum 4000 characters allowed)

8 Reference No. 2

List a company or governmental agency where these same/like products /services, as stated herein, have been provided. Texas references preferred. Include the following: Company/Entity, Contact, Address, City/State/Zip, Phone, and E-Mail.

(Required: Maximum 4000 characters allowed)

9 Reference No. 3

List a company or governmental agency where these same/like products /services, as stated herein, have been provided. Texas references preferred. Include the following: Company/Entity, Contact, Address, City/State/Zip, Phone, and E-Mail.

(Required: Maximum 4000 characters allowed)

10 Preferential Treatment

The County of Collin, as a governmental agency of the State of Texas, may not award a contract to a nonresident bidder unless the nonresident's bid is lower than the lowest bid submitted by a responsible Texas resident bidder by the same amount that a Texas resident bidder would be required to underbid a nonresident bidder to obtain a comparable contract in the state in which the nonresident's principal place of business is located (Government Code, Title 10, V.T.C.A., Chapter 2252, Subchapter A). 1. Is your principal place of business in the State of Texas? 2. If your principal place of business is not in Texas, in which State is your principal place of business? 3. If your principal place of business is not in Texas, does your state favor resident bidders (bidders in your state) by some dollar increment or percentage? 4. If your state favors resident bidders, state by what dollar amount or percentage.

(Required: Maximum 4000 characters allowed)

11 Debarment Certification

I certify that neither my company nor an owner or principal of my company has been debarred, suspended or otherwise made ineligible for participation in Federal Assistance programs under Executive Order 12549, "Debarment and Suspension," as described in the Federal Register and Rules and Regulations. Please initial.

(Required: Maximum 1000 characters allowed)

1
2 **Immigration and Reform Act**

I declare and affirm that my company is in compliance with the Immigration and Reform Act of 1986 and all employees are legally eligible to work in the United States of America. I further understand and acknowledge that any non-compliance with the Immigration and Reform Act of 1986 at any time during the term of this contract will render the contract voidable by Collin County. Please initial.

(Required: Maximum 1000 characters allowed)

1
3 **Disclosure of Certain Relationships**

Chapter 176 of the Texas Local Government Code requires that any vendor considering doing business with a local government entity disclose the vendor's affiliation or business relationship that might cause a conflict of interest with a local government entity. Subchapter 6 of the code requires a vendor to file a conflict of interest questionnaire (CIQ) if a conflict exists. By law this questionnaire must be filed with the records administrator of Collin County no later than the 7th business day after the date the vendor becomes aware of an event that requires the statement to be filed. A vendor commits an offense if the vendor knowingly violates the code. An offense under this section is a misdemeanor. By submitting a response to this request, the vendor represents that it is in compliance with the requirements of Chapter 176 of the Texas Local Government Code. Please send completed forms to the Collin County County Clerk's Office located at 2300 Bloomdale Rd., Suite 2104, McKinney, TX 75071. Please initial.

(Required: Maximum 1000 characters allowed)

1
4 **Anti-Collusion Statement**

Bidder certifies that its Bid/Proposal is made without prior understanding, agreement, or connection with any corporation, firm, or person submitting a Bid/Proposal for the same materials, services, supplies, or equipment and is in all respects fair and without collusion or fraud. No premiums, rebates or gratuities permitted; either with, prior to, or after any delivery of material or provision of services. Any such violation may result in Agreement cancellation, return of materials or discontinuation of services and the possible removal from bidders list. Please initial.

(Required: Maximum 1000 characters allowed)

1
5 **Disclosure of Interested Parties**

Section 2252.908 of the Texas Government Code requires a business entity entering into certain contracts with a governmental entity to file with the governmental entity a disclosure of interested parties at the time the business entity submits the signed contract to the governmental entity. Section 2252.908 requires the disclosure form (Form 1295) to be signed by the authorized agent of the contracting business entity, acknowledging that the disclosure is made under oath and under penalty of perjury. Section 2252.908 applies only to a contract that requires an action or vote by the governing body of the governmental entity before the contract may be signed or has a value of at least \$1 million. Section 2252.908 provides definitions of certain terms occurring in the section. Section 2252.908 applies only to a contract entered into on or after January 1, 2016. Please initial.

(Required: Maximum 1000 characters allowed)

1
6**Notification Survey**

In order to better serve our offerors, the Collin County Purchasing Department is conducting the following survey. We appreciate your time and effort expended to submit your bid. Should you have any questions or require more information please call (972) 548-4165. How did you receive notice of this request?

☐ Plano Star Courier ☐ Plan Room ☐ Collin County eBid Notification ☐ Collin County Website
☐ Other

(Required: Check only one)

1
7**Bid Bond Acknowledgement**

Accompanying this bid, is a certified check, cashier's check or Bid Bond in the amount of five percent (5%) of the total amount bid. Also accompanying this bid, all the information required in Section 002113 – Instructions to Bidders. Please initial.

(Required: Maximum 4000 characters allowed)

1
8**Construction Acknowledgement**

Bidder, declares that the only person or parties interested in this bid are those principals named herein, that his/her bid is made without collusion with any other person, firm or corporation, that he/she has carefully examined the Contract Documents including the Advertisement for Bids, Instruction to Bidders, Construction Agreement, Specifications and the Drawings, therein referred to and has carefully examined the locations, conditions and classes of materials for the proposed work, and agrees that he/she will provide all the necessary labor, machinery, tools, equipment, apparatus and other items incidental to construction and will do all the work and furnish all the materials called for in the Contract Documents in the manner prescribed therein. Bidder hereby declares that he/she has visited the site of the Work and has carefully examined the Contract Documents pertaining to the Work covered by the above Bid, and he/she further agrees to commence work within ten (10) consecutive calendar days after date of written Notice to Proceed and to substantially complete the work on which he/she has bid within the number of days specified subject to such extensions of time allowed by Specifications. Bidder certifies that the bid prices contained in this bid have been carefully checked and are submitted as correct and final. The prices have been shown in words and figures for each item listed in this bid and it is understood that in the event of a discrepancy, the words shall govern. Please initial.

(Required: Maximum 1000 characters allowed)

1
9**Addendum No. 1 Acknowledgement**

Please initial to verify your receipt of the addendum.

(Required: Maximum 1000 characters allowed)

Bid Lines

1

Bid Grand Total*(Response required)*Quantity: 1 UOM: lump sum Unit price: \$ Total: \$

Item Notes: Total Material Cost and Total Labor Cost must add up to the Bid Grand Total.

Supplier Notes:
☐ No bid
☐ Additional notes
(Attach separate sheet)
Item Attributes**1. Bid Grand Total- Written in Words**

The contract award will be based on the total bid price.

*(Required: Maximum 4000 characters allowed)***2. Total Material Cost Incorporated in Project**\$ *(Required: Numbers only)***3. Total Material Cost Incorporated in Project- Written in Words**

*(Required: Maximum 4000 characters allowed)***4. Total Labor Cost Incorporated in Project**\$ *(Required: Numbers only)***5. Total Labor Cost Incorporated in Project- Written in Words**

*(Required: Maximum 4000 characters allowed)***6. State Unit Price (per linear foot) for 1 1/2" Pipe**

State lump sum unit price per linear foot (material and labor) for 1 1/2" copper and steel pipe, fittings, insulation and valves.

Refer to Section 23 21 13 for pipe and valves and Section 23 07 00 for insulation. This unit pricing is requested to assist the county in analyzing work required for any unforeseen conditions.

\$ *(Required: Numbers only)*

7. State Unit Price (per linear foot) for 2" Pipe

State lump sum unit price per linear foot (material and labor) for 2" copper and steel pipe, fittings, insulation and valves.

Refer to Section 23 21 13 for pipe and valves and Section 23 07 00 for insulation. This unit pricing is requested to assist the county in analyzing work required for any unforeseen conditions.

\$

(Required: Numbers only)

8. State Unit Price (per linear foot) for 2 1/2" Pipe

State lump sum unit price per linear foot (material and labor) for 2 1/2" copper and steel pipe, fittings, insulation and valves.

Refer to Section 23 21 13 for pipe and valves and Section 23 07 00 for insulation. This unit pricing is requested to assist the county in analyzing work required for any unforeseen conditions.

\$

(Required: Numbers only)

9. State Unit Price (per linear foot) for 3" Pipe

State lump sum unit price per linear foot (material and labor) for 3" copper and steel pipe, fittings, insulation and valves.

Refer to Section 23 21 13 for pipe and valves and Section 23 07 00 for insulation. This unit pricing is requested to assist the county in analyzing work required for any unforeseen conditions.

\$

(Required: Numbers only)

10. State Unit Price (per linear foot) for 4" Pipe

State lump sum unit price per linear foot (material and labor) for 4" copper and steel pipe, fittings, insulation and valves.

Refer to Section 23 21 13 for pipe and valves and Section 23 07 00 for insulation. This unit pricing is requested to assist the county in analyzing work required for any unforeseen conditions.

\$

(Required: Numbers only)

11. State Unit Price (per linear foot) for 6" Pipe

State lump sum unit price per linear foot (material and labor) for 6" copper and steel pipe, fittings, insulation and valves.

Refer to Section 23 21 13 for pipe and valves and Section 23 07 00 for insulation. This unit pricing is requested to assist the county in analyzing work required for any unforeseen conditions.

\$

(Required: Numbers only)

12. State Unit Price (per linear foot) for 8" Pipe

State lump sum unit price per linear foot (material and labor) for 8" copper and steel pipe, fittings, insulation and valves.

Refer to Section 23 21 13 for pipe and valves and Section 23 07 00 for insulation. This unit pricing is requested to assist the county in analyzing work required for any unforeseen conditions.

\$

(Required: Numbers only)

Supplier Information

Company Name:

Contact Name:

Address:

Phone:

Fax:

Email:

Supplier Notes

The undersigned hereby certifies the foregoing bid submitted by the company listed below hereinafter called "bidder" is the duly authorized agent of said company and the person signing said bid has been duly authorized to execute same. Bidder affirms that they are duly authorized to execute this contract; this company; corporation, firm, partnership or individual has not prepared this bid in collusion with any other bidder or other person or persons engaged in the same line of business; and that the contents of this bid as to prices, terms and conditions of said bid have not been communicated by the undersigned nor by any employee or agent to any other person engaged in this type of business prior to the official opening of this bid.

Print Name

Signature