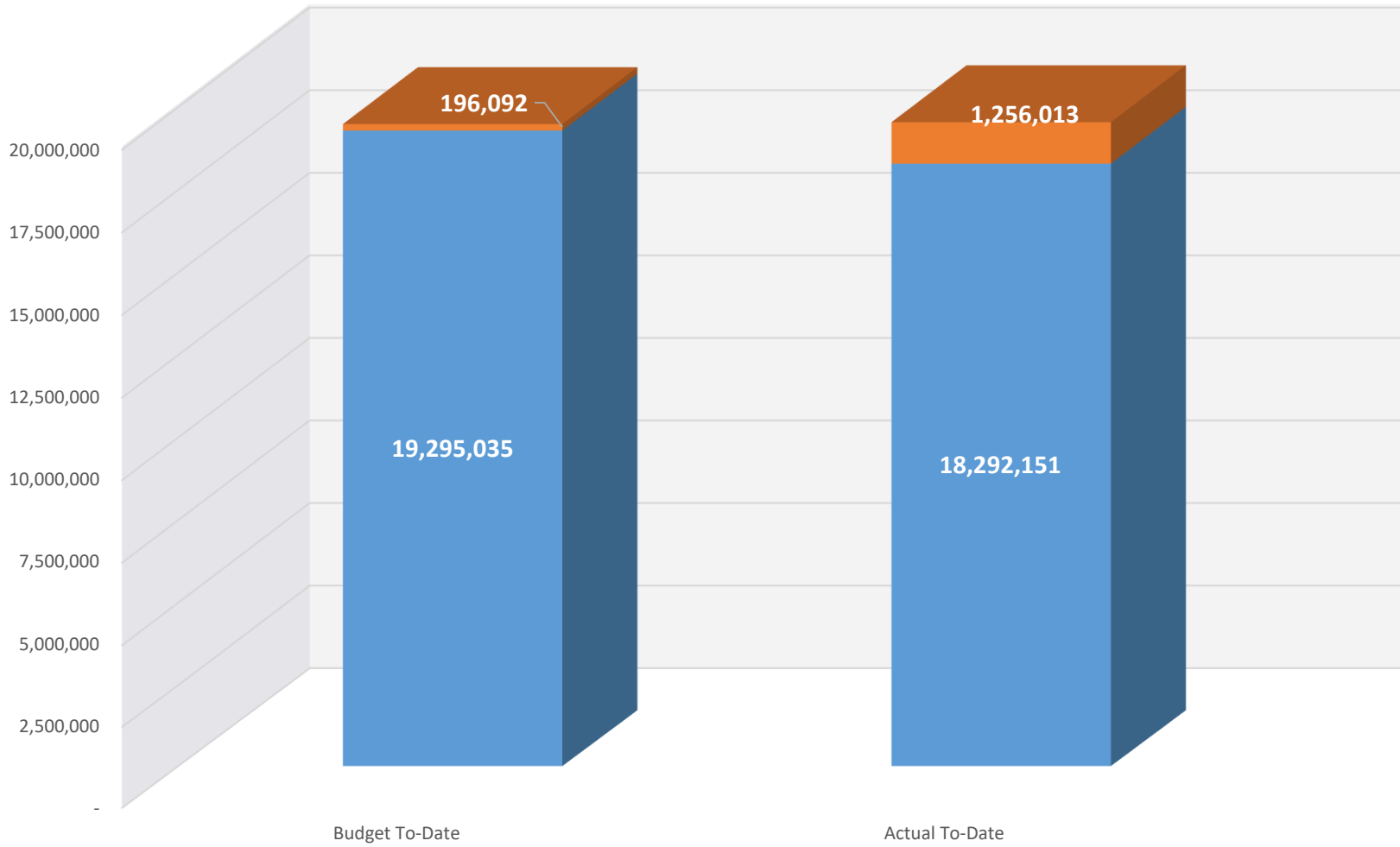


Longevity Not Included

FY2020 Sheriff's Office Budget vs Actual

Budget YTD	19,491,127
Actual YTD	19,548,163

■ Regular / Other ■ Overtime

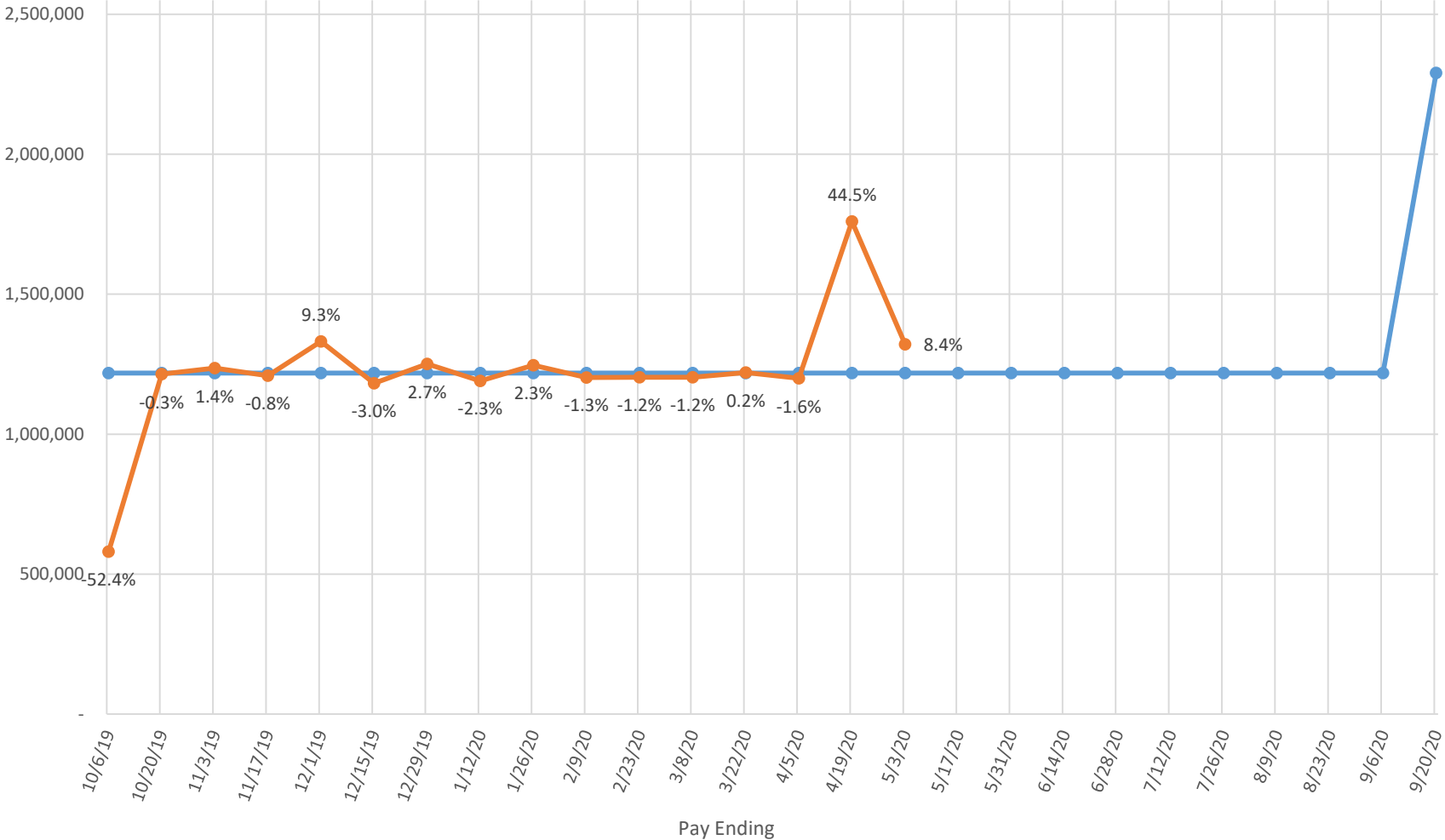


Longevity Not Included

FY2020 Sheriff's Office Budget vs Actual by Pay Period

Budget YTD	19,491,127
Actual YTD	19,548,163

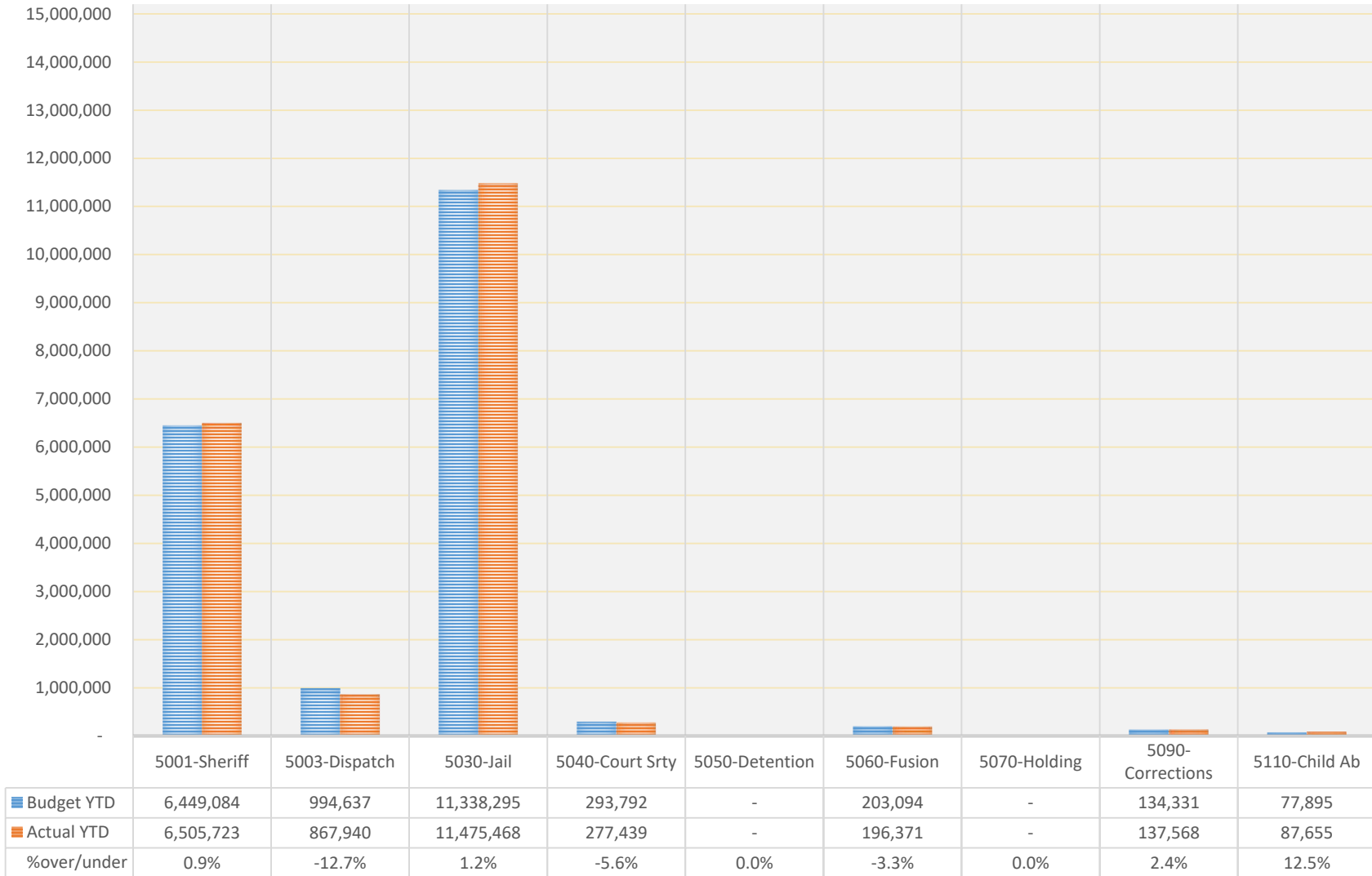
—●— Budget —●— Actual



Longevity Not Included

FY2020 Sheriff's Office
Budget vs Actual
By Department

Budget YTD	19,491,127
Actual YTD	19,548,163



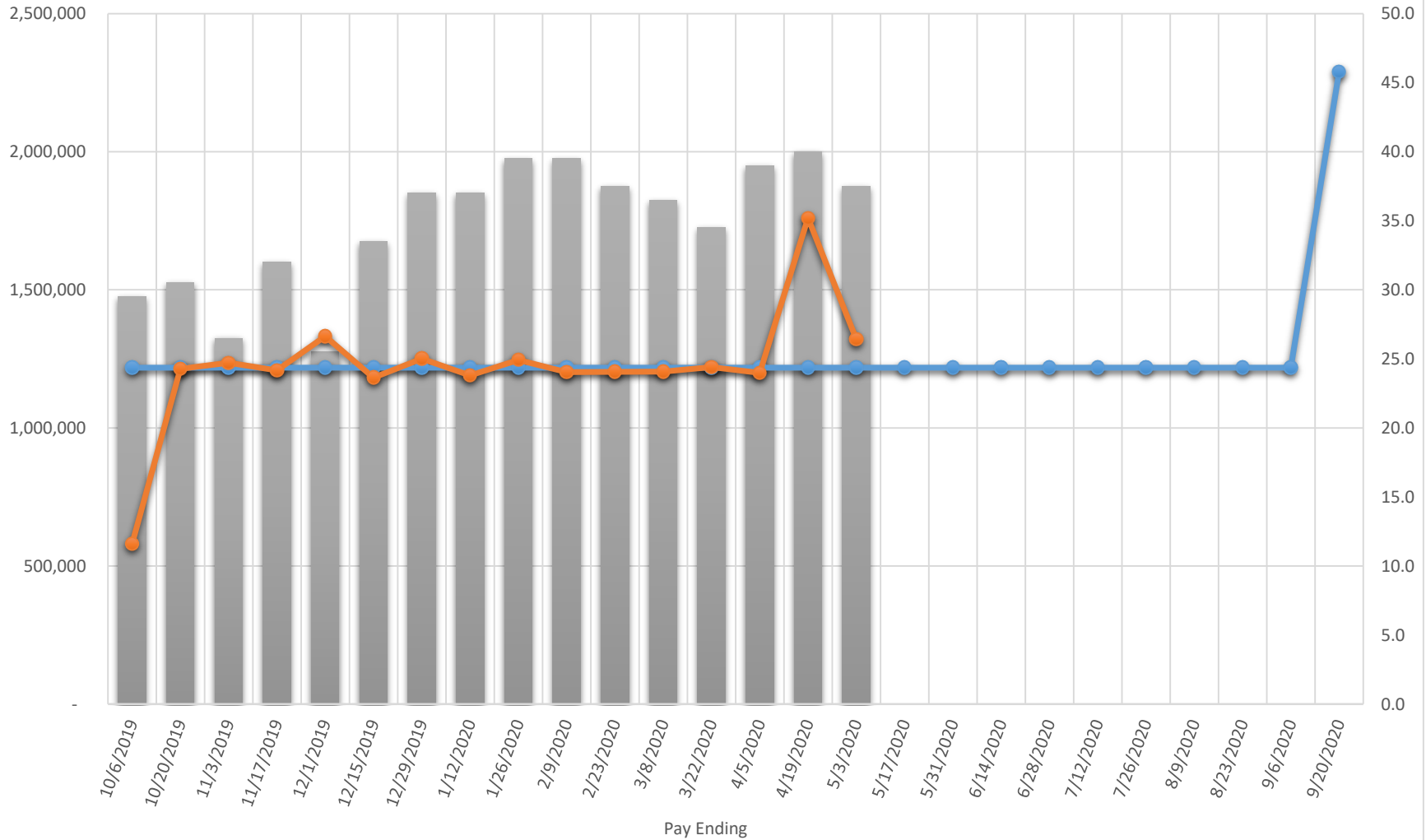
Longevity Not Included

Positions represented below:
Transfer Officers
Deputy Sheriff and Recruits
Detention Officers

FY2020 Sheriff's Office With Vacant Positions

Budget YTD	19,491,127
Actual YTD	19,548,163

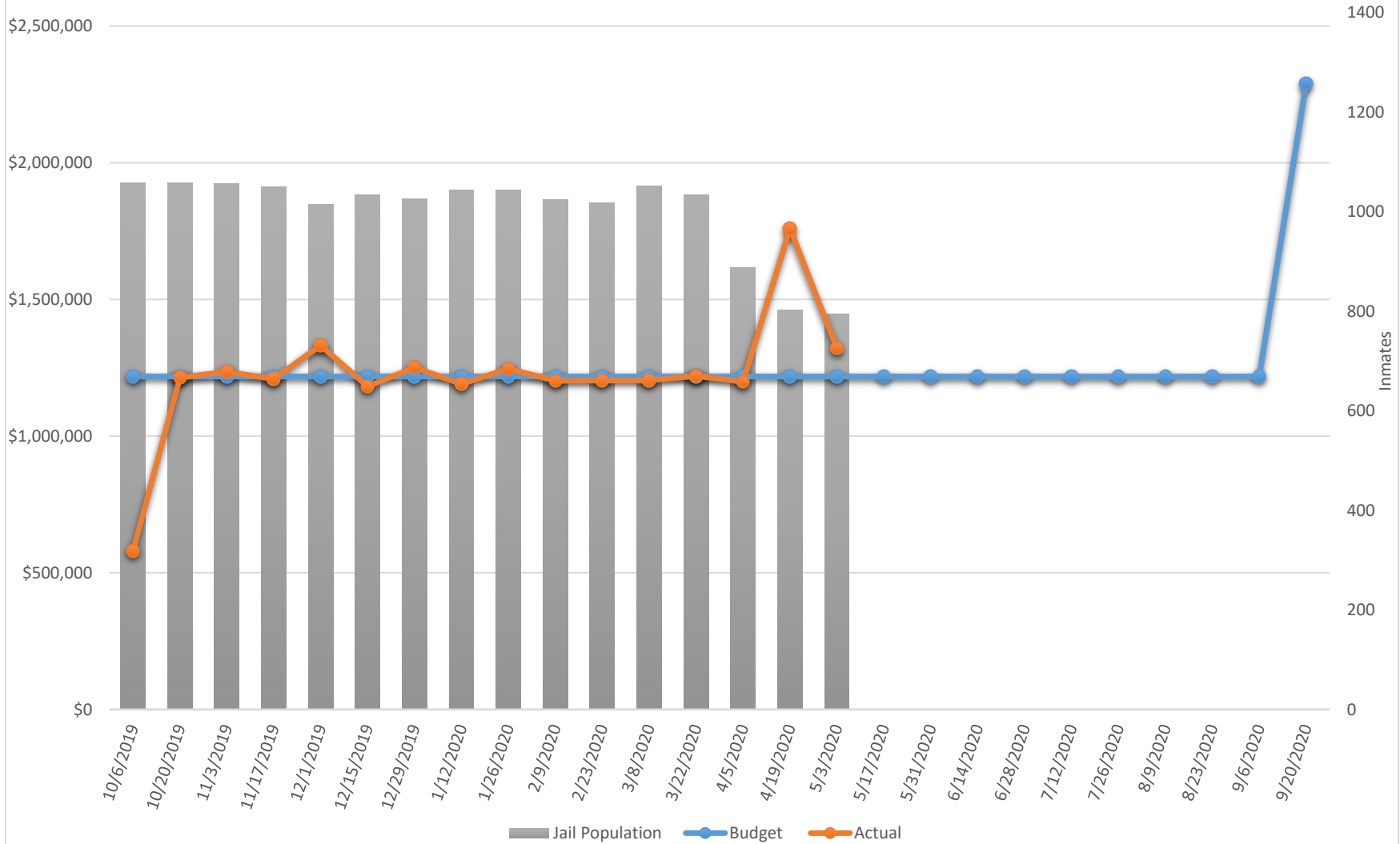
Open Positions Budget Actual



Longevity Not Included

FY2020 Sheriff's Office With Jail Population

Budget YTD	19,491,127
Actual YTD	19,548,163

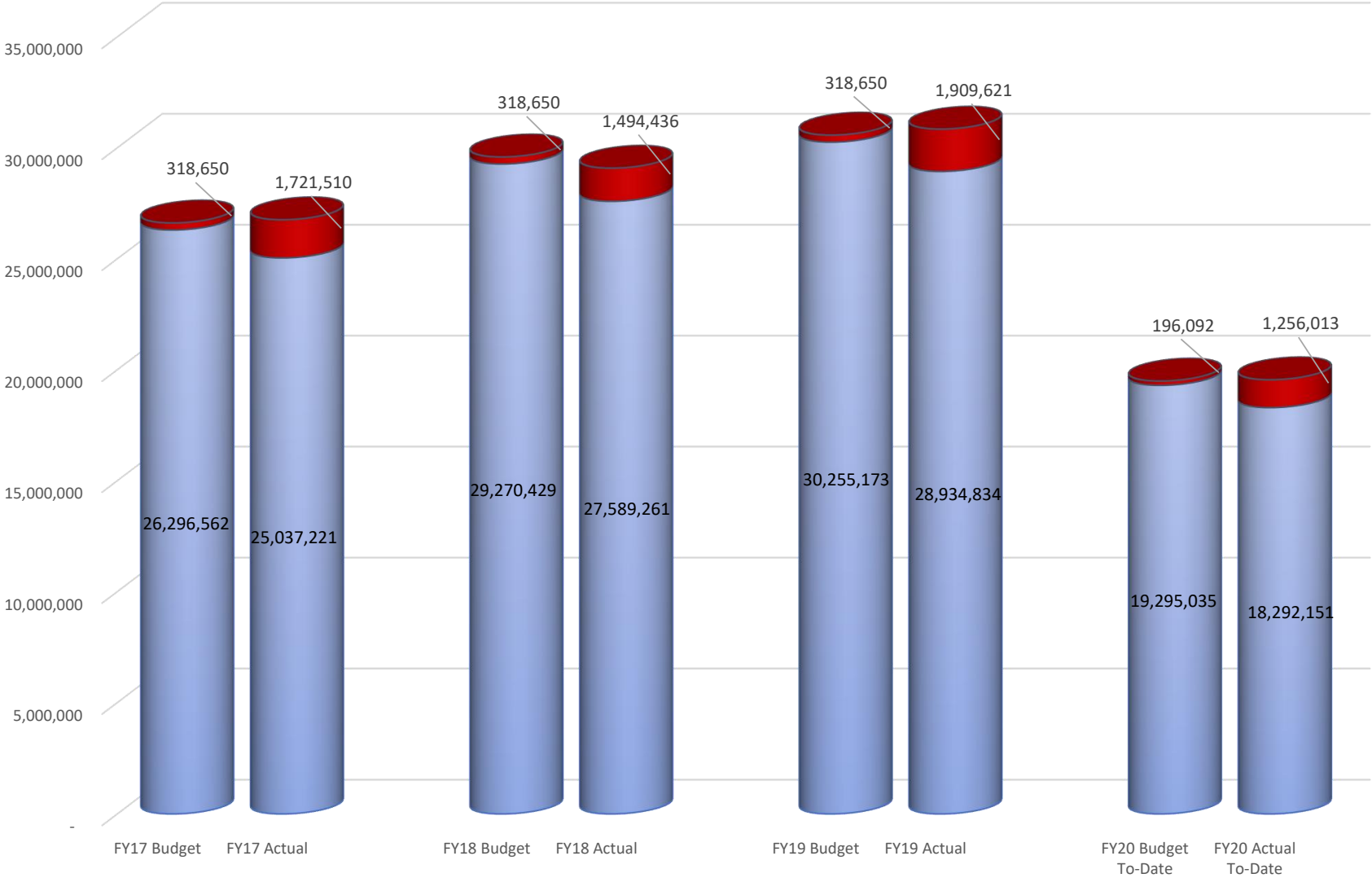


Longevity Not Included

FY2020 Sheriff's Office

Regular / Other Overtime

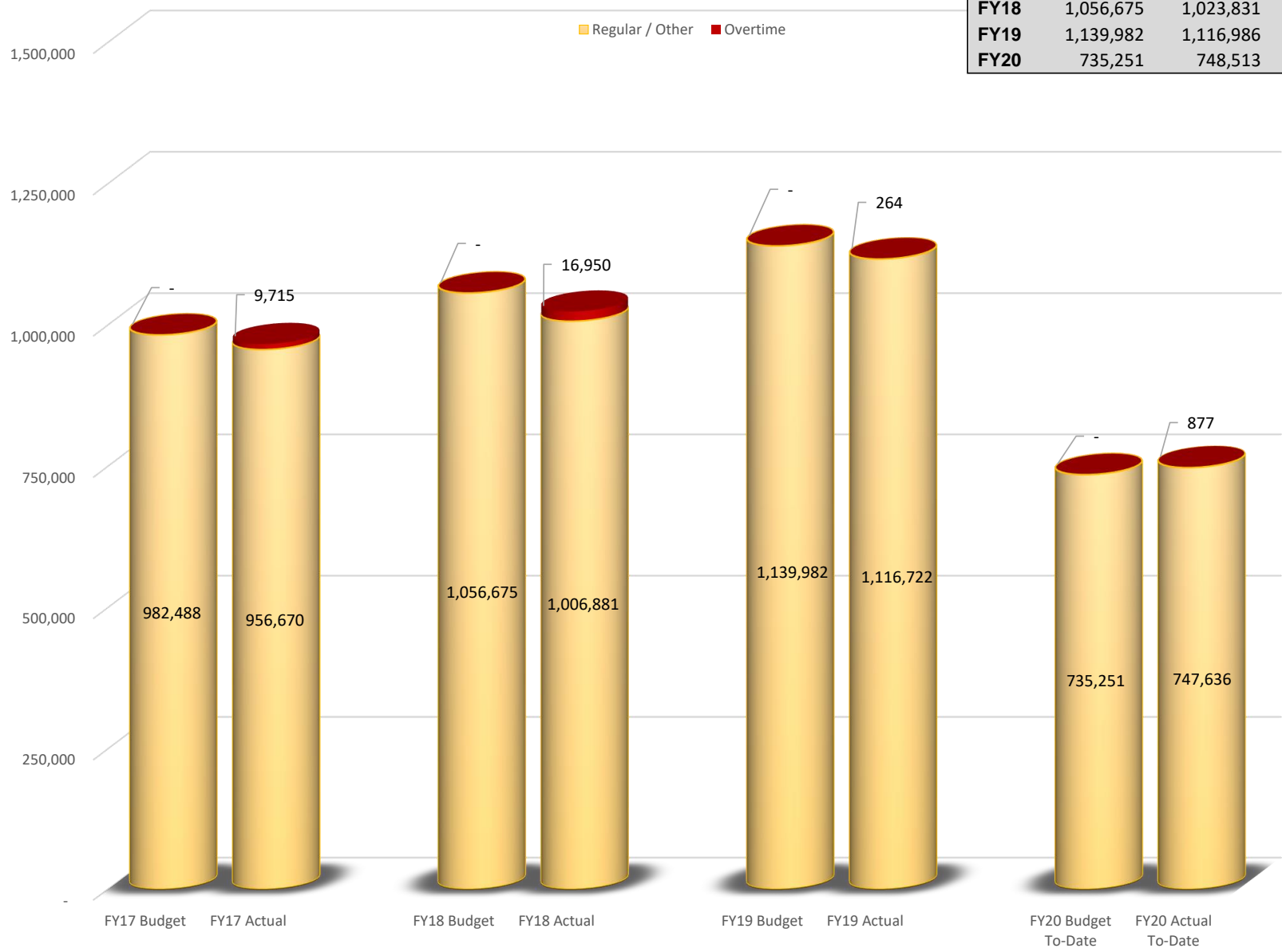
	Budget	Actual	Pct%
FY17	26,615,212	26,758,731	1%
FY18	29,589,079	29,083,697	-2%
FY19	30,573,823	30,844,455	1%
FY20	19,491,127	19,548,163	0%



Longevity Not Included

FY2020 Medical Examiner

	Budget	Actual	Pct%
FY17	982,488	966,384	-2%
FY18	1,056,675	1,023,831	-3%
FY19	1,139,982	1,116,986	-2%
FY20	735,251	748,513	2%

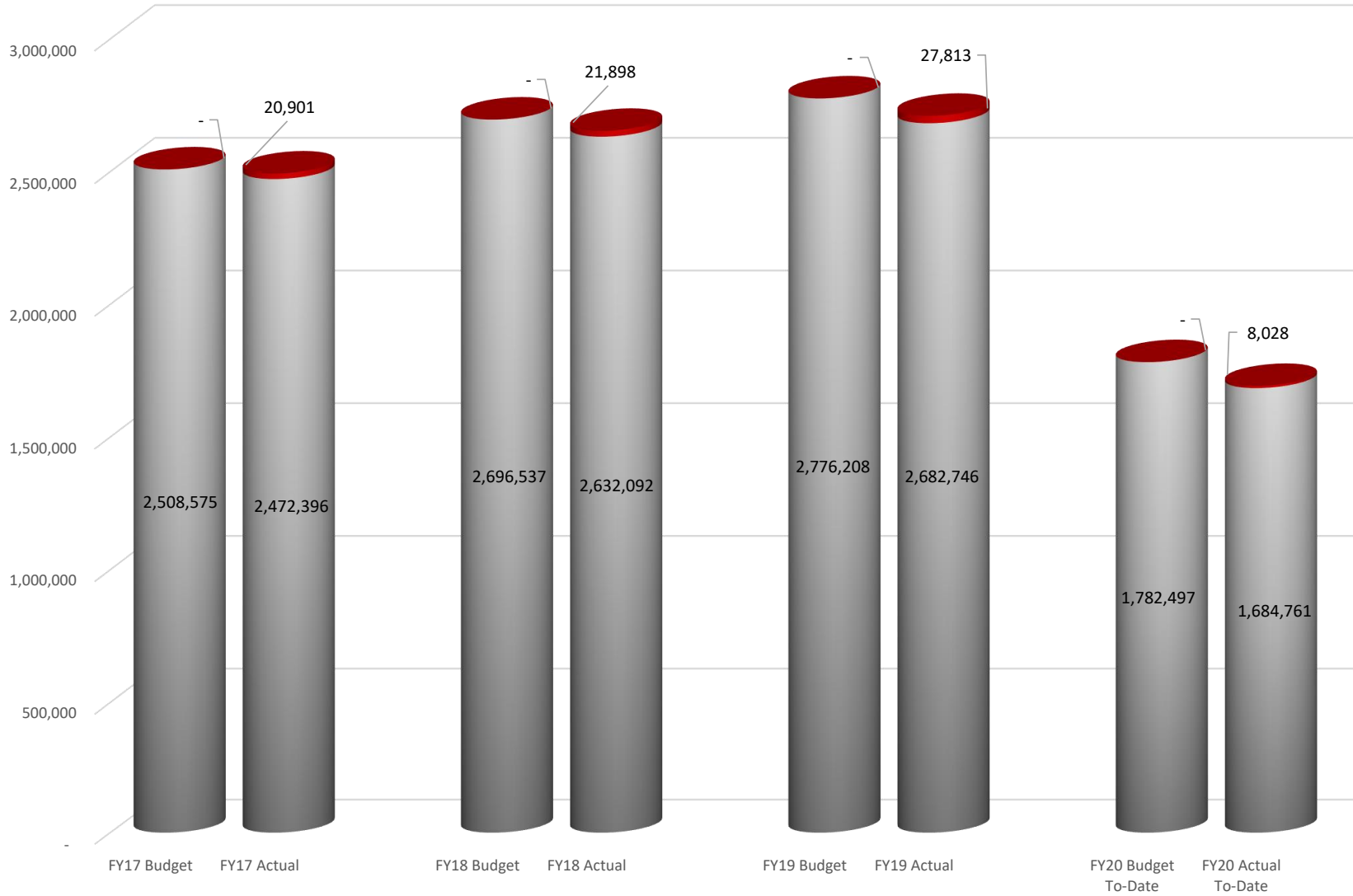


Longevity Not Included

FY2020 Facilities

■ Regular / Other ■ Overtime

	Budget	Actual	Pct%
FY17	2,508,575	2,493,297	-1%
FY18	2,696,537	2,653,990	-2%
FY19	2,776,208	2,710,559	-2%
FY20	1,782,497	1,692,789	-5%



Longevity Not Included

FY2020 Animal Shelter/Control

Regular / Other Overtime

	Budget	Actual	Pct%
FY17	515,716	514,630	0%
FY18	591,674	580,706	-2%
FY19	661,157	658,387	0%
FY20	420,869	439,886	5%

