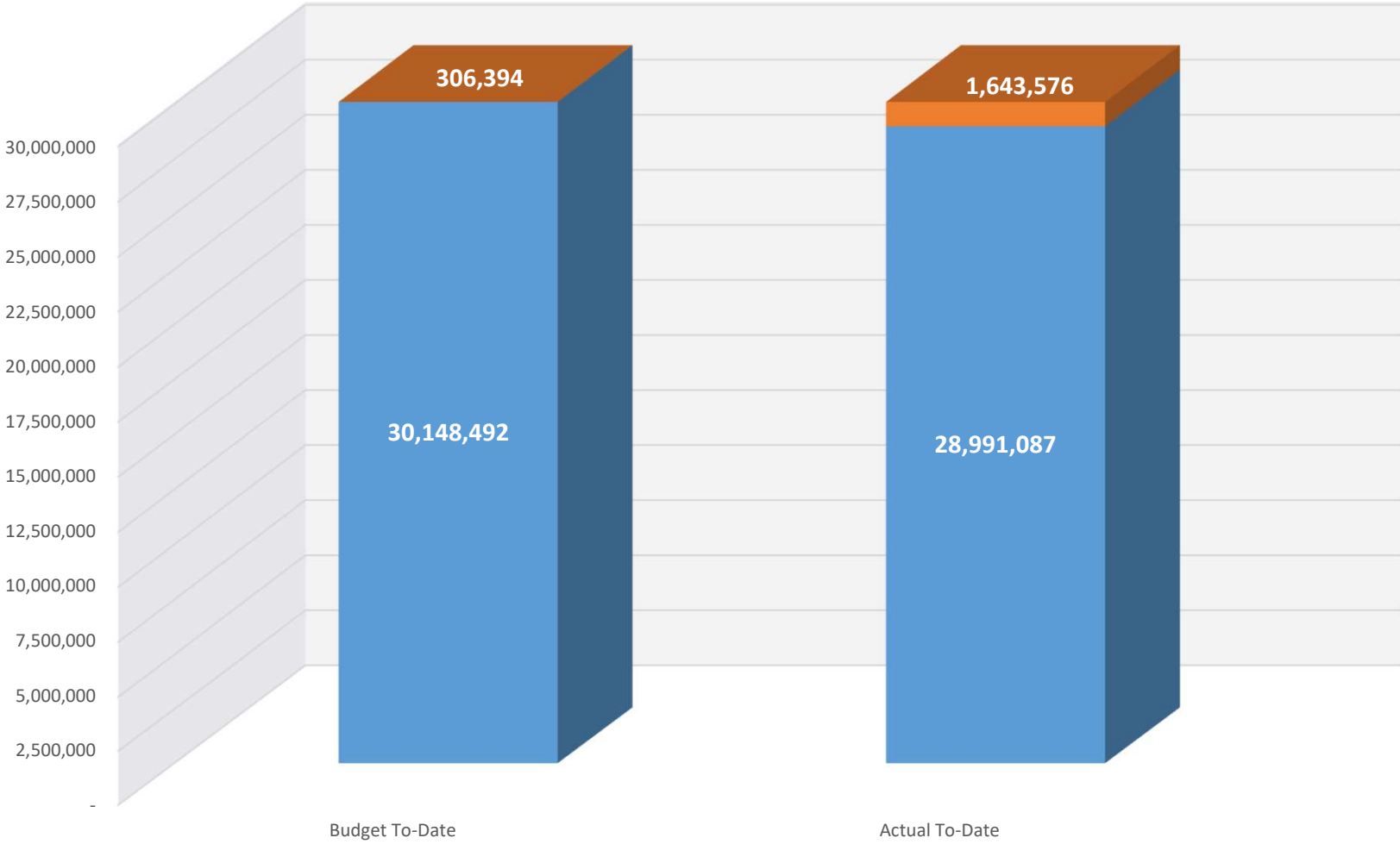


Longevity Not Included

### FY2020 Sheriff's Office Budget vs Actual

Budget YTD	30,454,887
Actual YTD	30,634,663

■ Regular / Other ■ Overtime

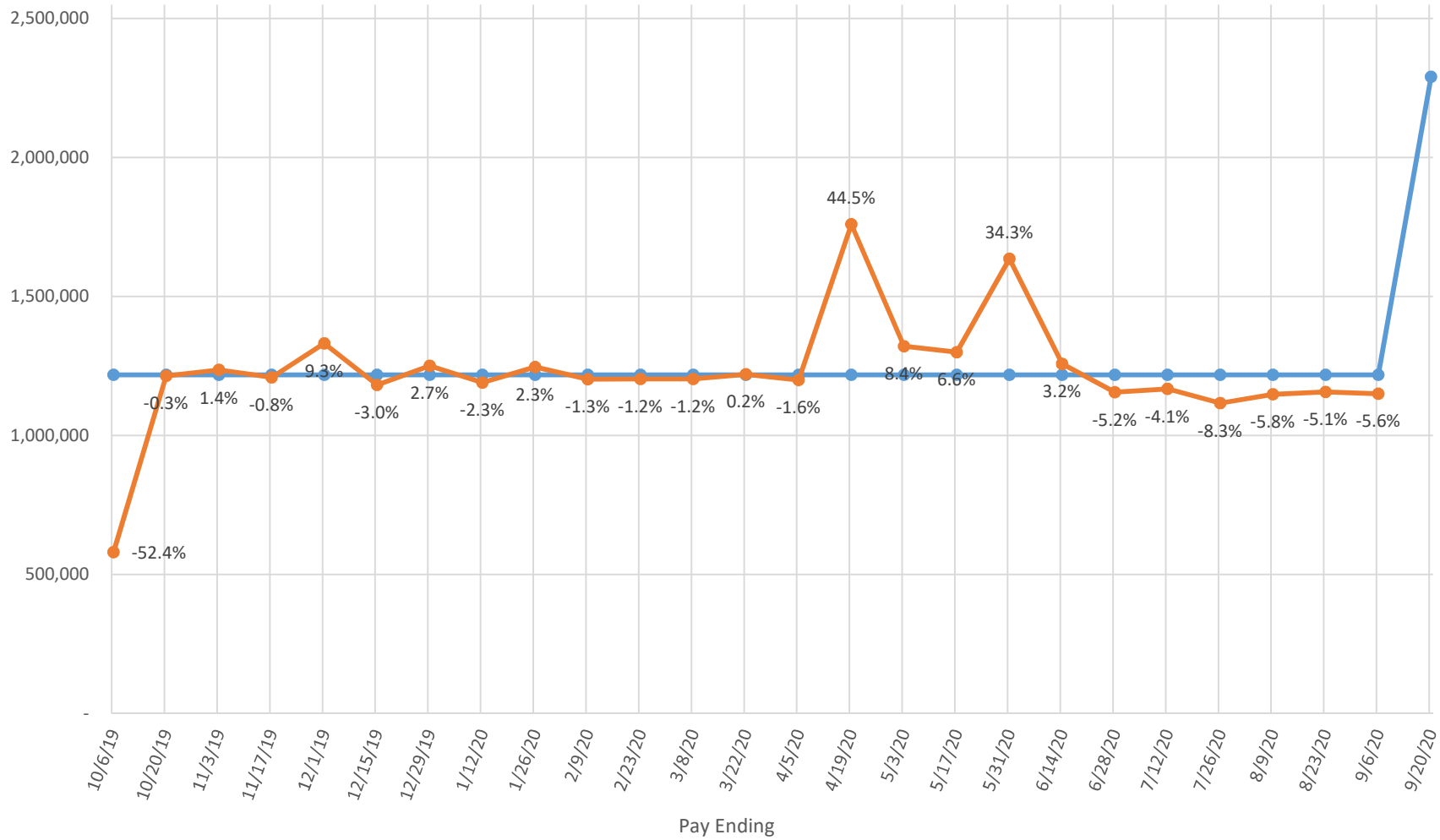


Longevity Not Included

### FY2020 Sheriff's Office Budget vs Actual by Pay Period

Budget YTD	30,454,887
Actual YTD	30,634,663

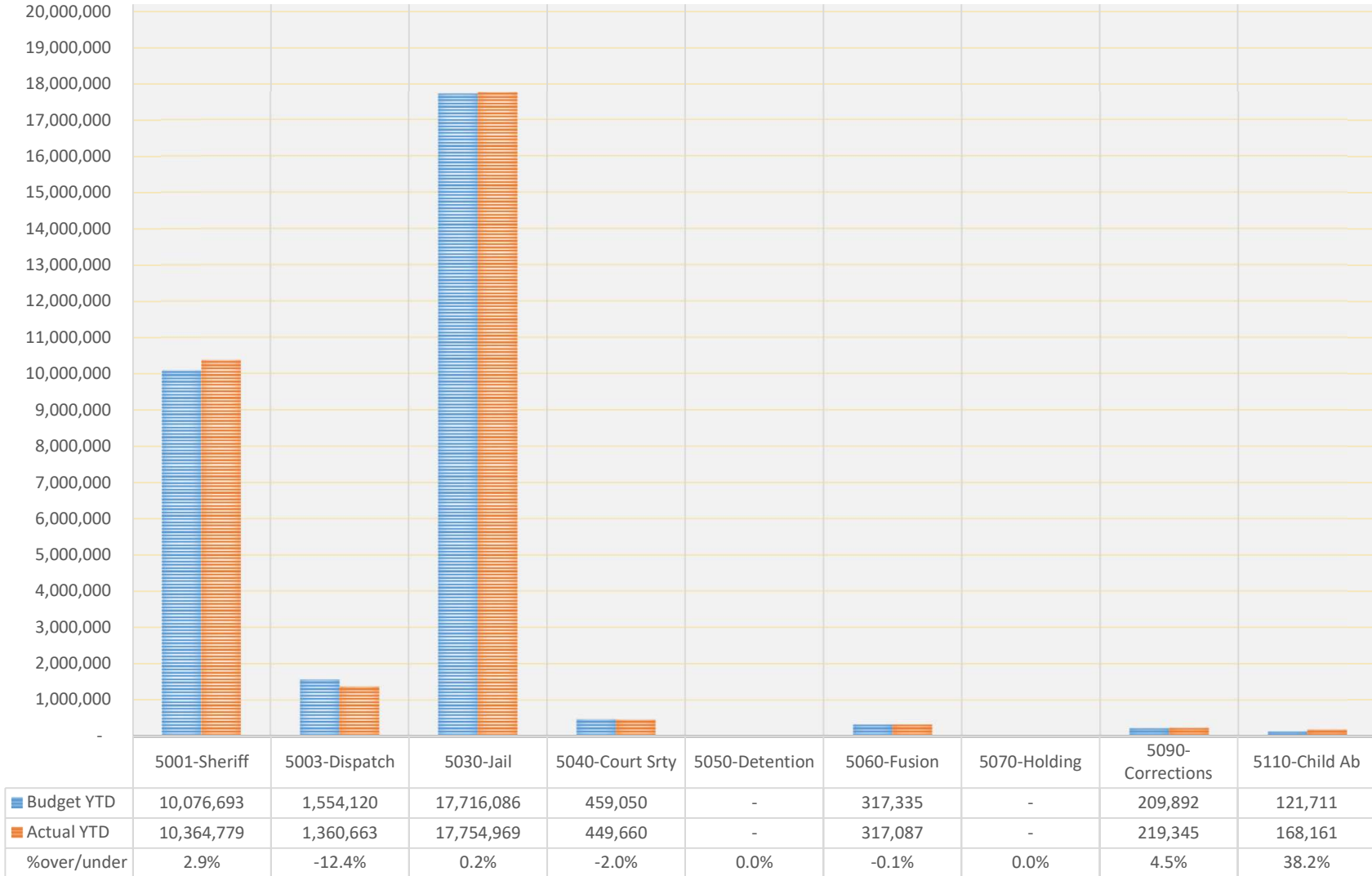
—●— Budget —●— Actual



Longevity Not Included

FY2020 Sheriff's Office  
Budget vs Actual  
By Department

Budget YTD	30,454,887
Actual YTD	30,634,663



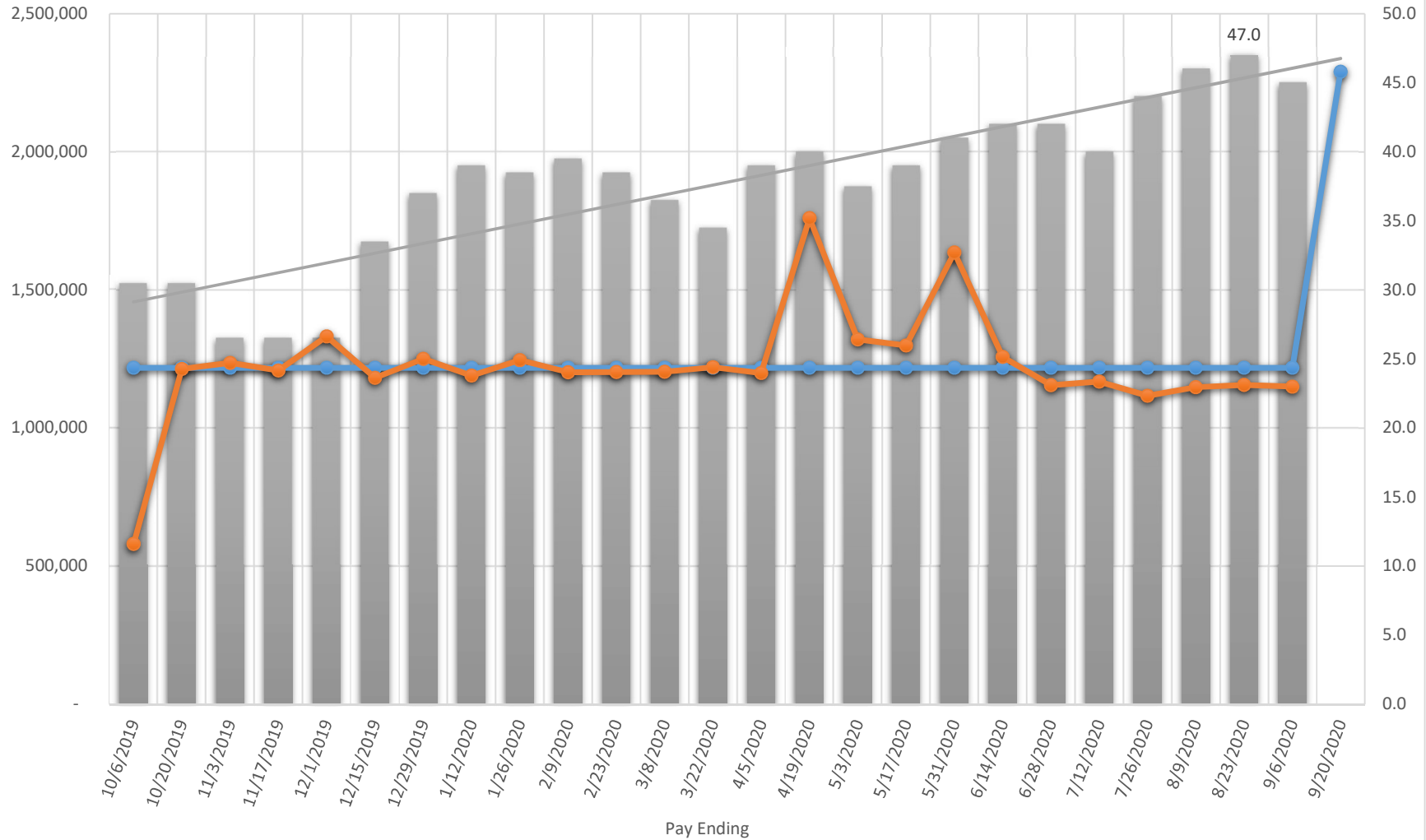
Longevity Not Included

Positions represented below:  
Transfer Officers  
Deputy Sheriff and Recruits  
Detention Officers

### FY2020 Sheriff's Office With Vacant Positions

Budget YTD	30,454,887
Actual YTD	30,634,663

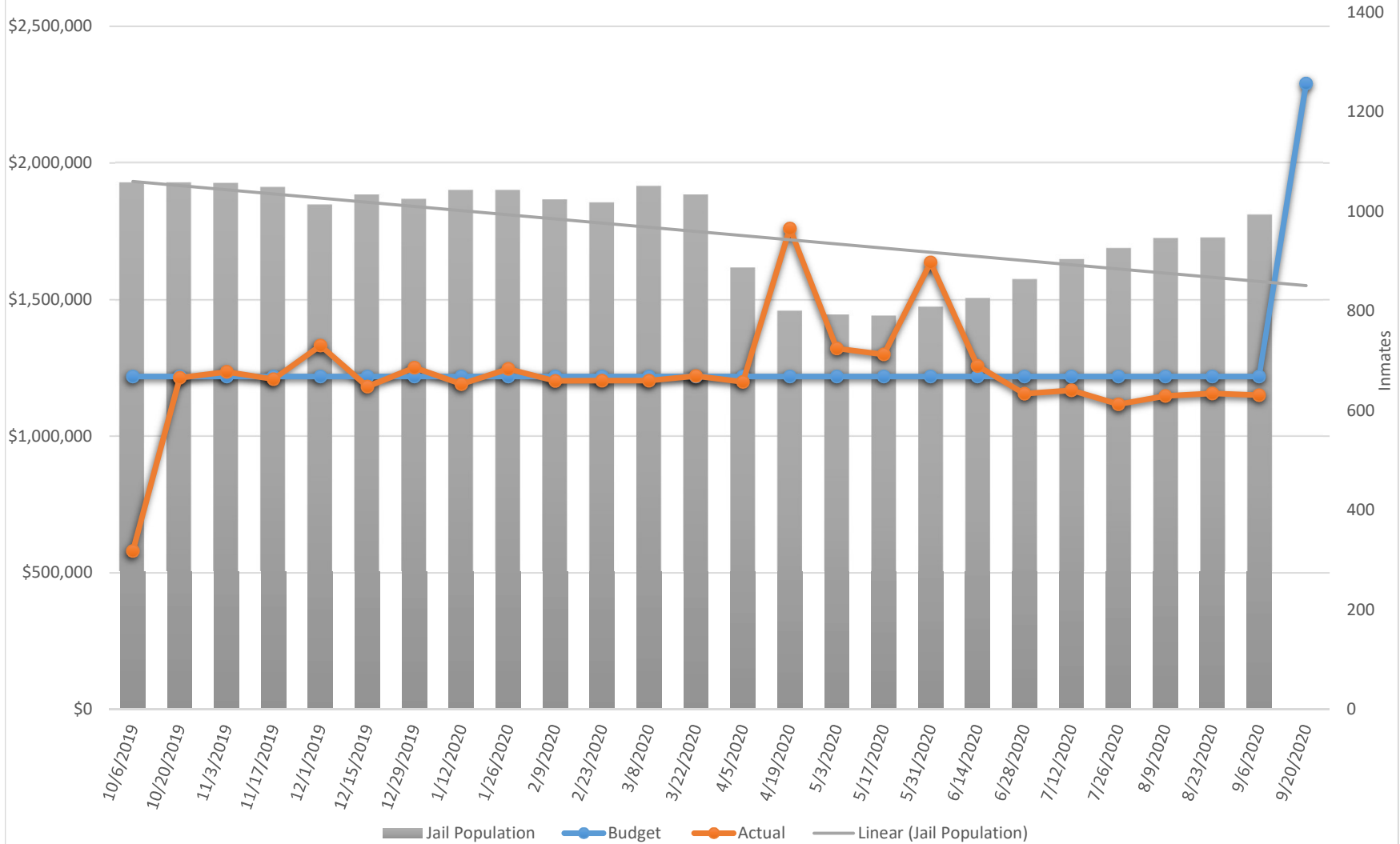
Open Positions



Longevity Not Included

### FY2020 Sheriff's Office With Average Jail Population

Budget YTD	30,454,887
Actual YTD	30,634,663

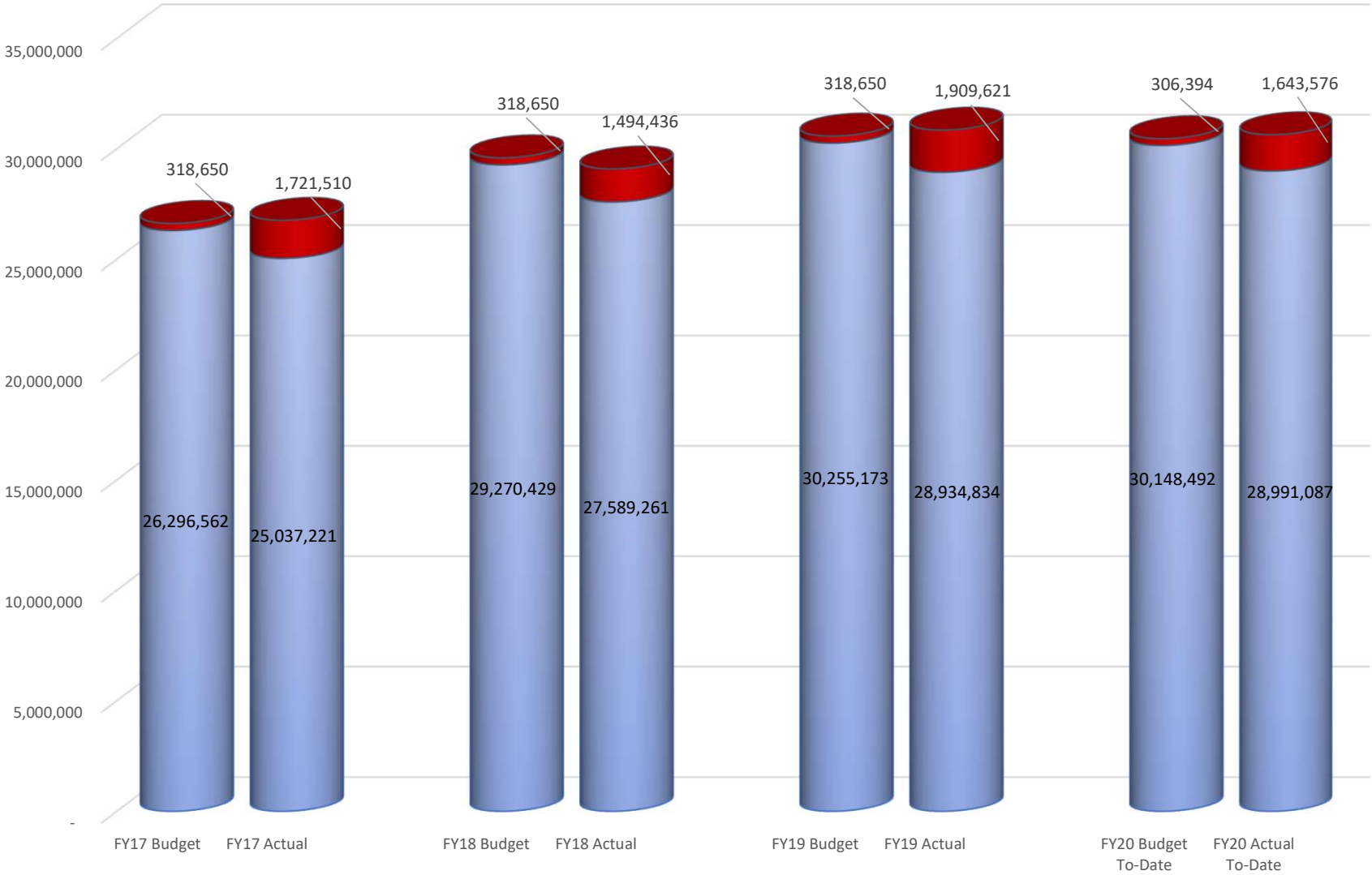


Longevity Not Included

FY2020 Sheriff's Office

Regular / Other Overtime

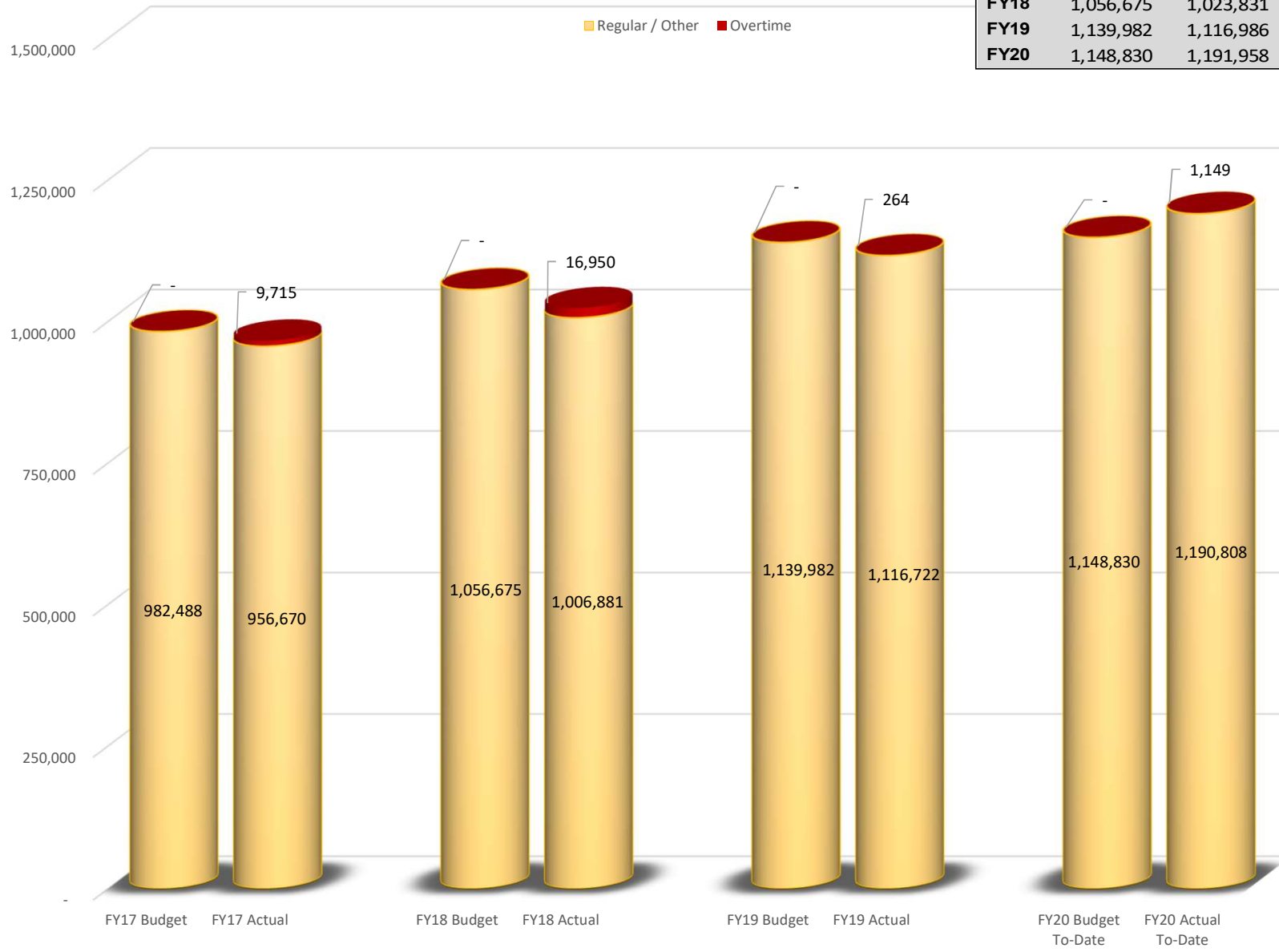
	Budget	Actual	Pct%
<b>FY17</b>	26,615,212	26,758,731	1%
<b>FY18</b>	29,589,079	29,083,697	-2%
<b>FY19</b>	30,573,823	30,844,455	1%
<b>FY20</b>	30,454,887	30,634,663	1%



Longevity Not Included

### FY2020 Medical Examiner

	Budget	Actual	Pct%
<b>FY17</b>	982,488	966,384	-2%
<b>FY18</b>	1,056,675	1,023,831	-3%
<b>FY19</b>	1,139,982	1,116,986	-2%
<b>FY20</b>	1,148,830	1,191,958	4%

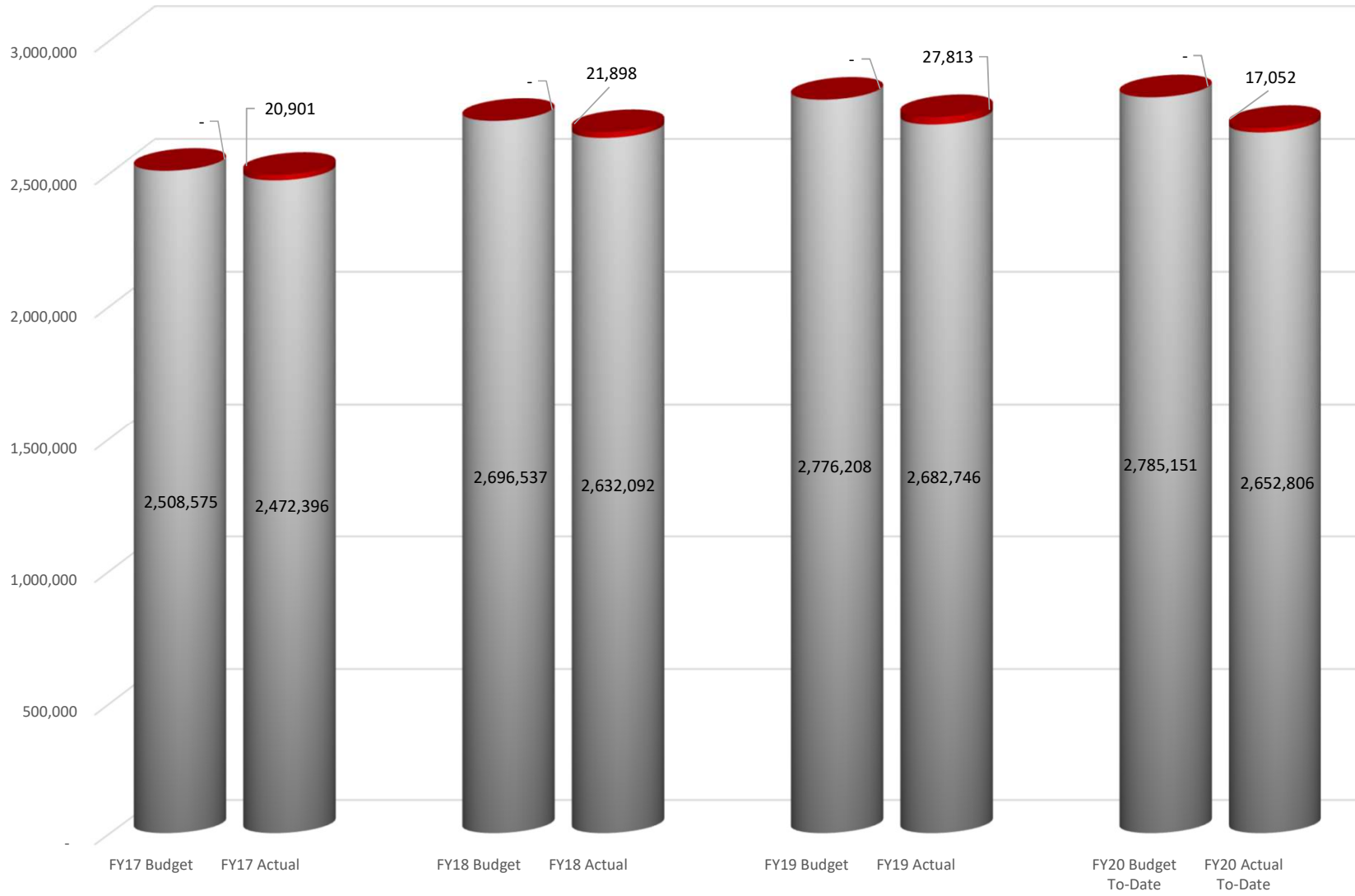


Longevity Not Included

FY2020 Facilities

■ Regular / Other ■ Overtime

	Budget	Actual	Pct%
<b>FY17</b>	2,508,575	2,493,297	-1%
<b>FY18</b>	2,696,537	2,653,990	-2%
<b>FY19</b>	2,776,208	2,710,559	-2%
<b>FY20</b>	2,785,151	2,669,858	-4%





Longevity Not Included

FY2020 Animal Shelter/Control

Regular / Other Overtime

	Budget	Actual	Pct%
<b>FY17</b>	515,716	514,630	0%
<b>FY18</b>	591,674	580,706	-2%
<b>FY19</b>	661,157	658,387	0%
<b>FY20</b>	657,608	722,899	10%

