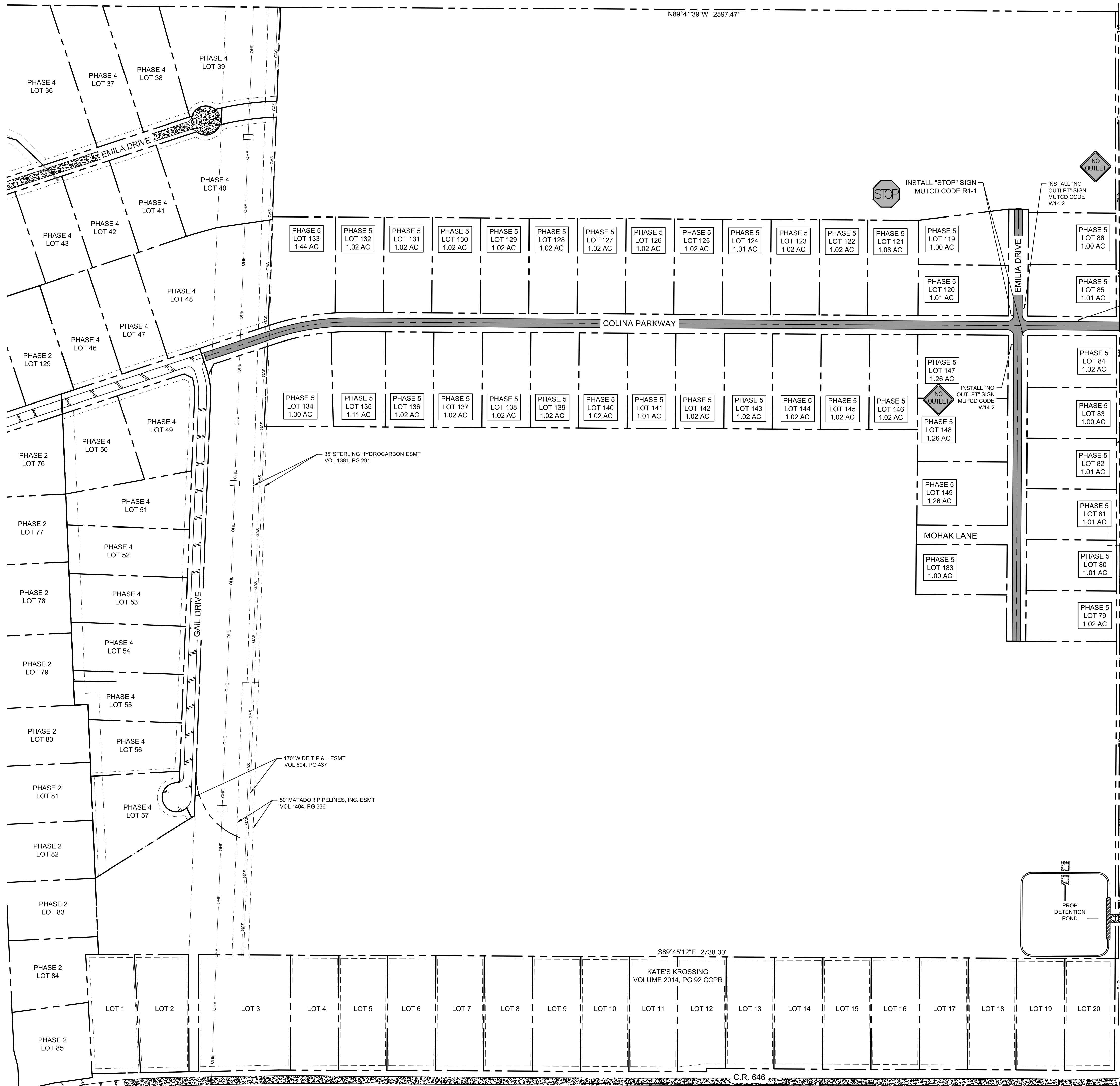
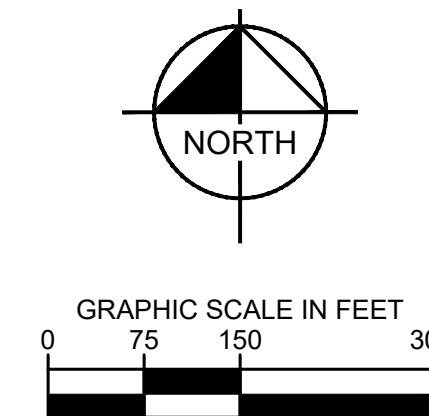


N89°41'39"W 2597.47'



NO.	REVISIONS	DATE	BY

**Kimley»Horn**  
© 2020 KIMLEY-HORN AND ASSOCIATES, INC.  
260 EAST DAVIS STREET, SUITE 100, MCKINNEY, TX 75069  
PHONE: 469-301-2560 FAX: 972-239-8320  
WWW.KIMLEY-HORN.COM TX F-928

**PRELIMINARY**  
FOR REVIEW ONLY  
Not for construction or permit purposes.  
**Kimley»Horn**  
Engineer: ERIC T. JESKE  
P.E. No. 133295 Date: AUGUST 2020

KHA PROJECT	064564301
DATE	AUGUST 2020
SCALE	AS SHOWN
DESIGNED BY	ETJ
DRAWN BY	BIC
CHECKED BY	JEH

COLINA CREEK  
COLLIN COUNTY, TX  
PREPARED FOR:  
**ROLLING RIVER ESTATES**

**SIGNAGE PLAN**  
SHEET NUMBER  
**C-004**

**CAUTION!!**  
CONTRACTOR IS TO VERIFY  
PRESENCE AND EXACT  
LOCATION OF ALL UTILITIES  
PRIOR TO CONSTRUCTION.



PLANNED  
LAST DATED  
KIMLEY-HORN AND ASSOCIATES, INC.  
260 EAST DAVIS STREET, SUITE 100, MCKINNEY, TX 75069  
WWW.KIMLEY-HORN.COM

This document, together with the concepts and designs presented herein, is intended only for the specific purpose and client for which it was prepared. Release and improper reliance on this document without written authorization and delineation by Kimley-Horn and Associates, Inc. shall be without liability to Kimley-Horn and Associates, Inc.