

COVID-19 Vaccination for Collin County

Dec.
2020

A population-scale COVID-19 vaccination plan for all Texans



Curative mobile units vaccinate care home residents and staff

Curative provides all staff and resources

Curative bills insurance - there is no additional cost

Curative needs City and County-level partners to provide:

- **Allocation of COVID-19 vaccine doses**
- **A prioritized list of all Long Term Care Facilities in the county**
- **Large, easily accessible parking lots for mass-vaccination sites**

Curative's plan provides
population-scale access
to the COVID-19 vaccine, while
also serving priority
populations and communities.

Curative's mission is to
end the **COVID-19** pandemic.
To date, we have supported public
health efforts by performing **over
8 million COVID-19** tests across
8,000 testing sites.

From field operations to certified lab facilities,
Curative has built a massive, robust, and rapid
infrastructure for **COVID-19** testing.

With the same mission, we are now rising to meet
new challenges. During the coming months, we
will use our nation-wide infrastructure to deliver
COVID-19 vaccine together with federal, state,
and county-level partners.



WHY CURATIVE?



We manage thousands of **COVID testing sites** that can be converted to **vaccination sites**



We provide **training and support** for partner teams of any size, or operate sites ourselves.



We are a **trusted partner** for nursing homes and public health departments across the country.



We manage the **insurance billing** process and integrate with state reporting systems.

Curative delivers a proven end-to-end solution for COVID-19 testing and has a plan for population-scale COVID-19 vaccination.

Curative's plan involves
operating three different
vaccination site models.

Three different types of sites, designed for specific scenarios, can deliver **250 to 5,000** doses per day.

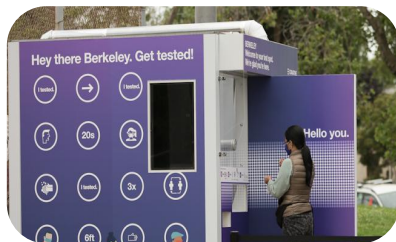
Stadium Sites



Provide **high** throughput at large scale vaccination centers

Capacity: 5,000 vaccines/day

Kiosk Sites



Convenient access at key sites like public transit hubs

Capacity: 250 vaccines/day

Mobile Units



Quickly reach **low-density** areas or target populations

Capacity: 300 vaccines/day

CURATIVE VACCINE VAN



The Curative vaccine van can serve up to 300 patients per day, with two to five nurses, and can transport vaccine doses.

CURATIVE VACCINE KIOSK



The Curative vaccine kiosk can serve up to 250 patients per day, with two nurses, and can store vaccine doses.

CURATIVE MASS VACCINATION SITE



The Curative mass vaccination site, at facilities like sports arenas and stadiums can serve up to 5,000 patients per day, with dozens of nurses.

Curative's plan is designed to support the CDC's three-phase approach for COVID-19 vaccination.

A PHASED APPROACH TO VACCINE DISTRIBUTION

PHASE 1: Deploy mobile teams to Long Term Care Facilities to serve **critical populations***

PHASE 1B: Begin vaccinating **essential workers** at existing fixed sites that currently offer COVID-19 testing.**

According to the CDC ACIP prioritization plan:

*critical populations include Long Term Care Facility residents and staff

**essential workers include Education sector, Food & Agriculture, Utilities, Police, Firefighters, Corrections officers, Transportation

A PHASED APPROACH TO VACCINE DISTRIBUTION

PHASE 2: Establish mass vaccination clinics at large and easily accessible sites to serve the **general public.**

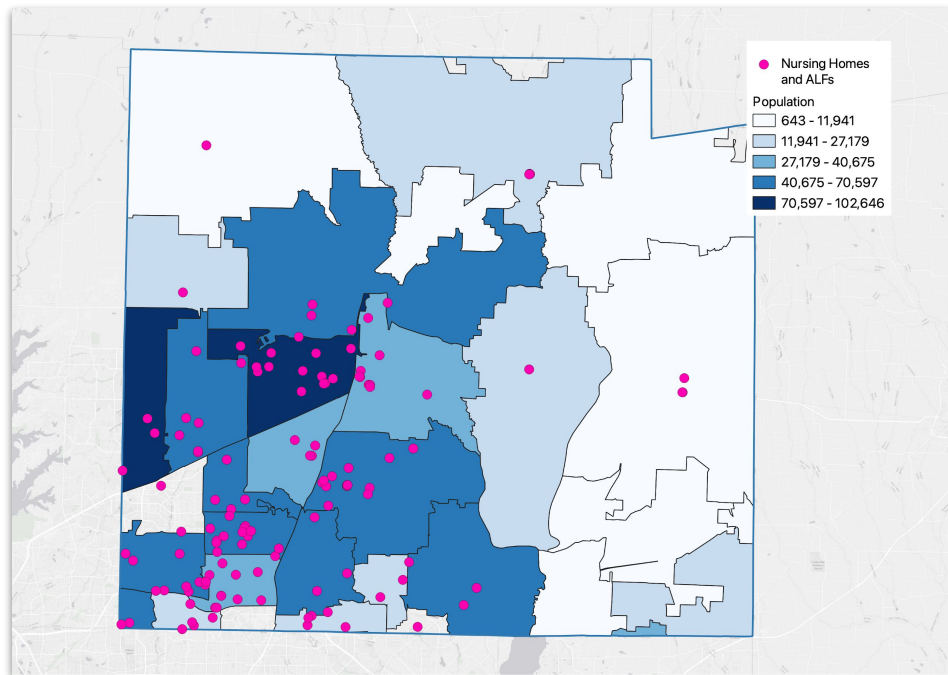
PHASE 3: Extend our network of kiosks, vans and drive thrus to reach more communities. Dispatch mobile teams to reach **underserved populations.**

A PHASED APPROACH TO VACCINE DISTRIBUTION

Working in partnership with the 3,200 Department of Public Health, we will support the CDC's three-phase distribution plan.

Curative will administer the **first doses of COVID-19 vaccine** that become available during Phase 1.

To address priority populations (as defined by the CDC), we will dispatch **mobile vaccination teams** to Long Term Care Facilities (LTCFs) and other key sites.



VACCINE DISTRIBUTION: PHASE 1

Phase 1 Priority Populations in Collin County

Working in partnership with the **Collin County State Department of Public Health**, we will address the needs of the highest risk groups.

Phase 1 will focus on Nursing Homes and Assisted Living Facilities (ALFs).

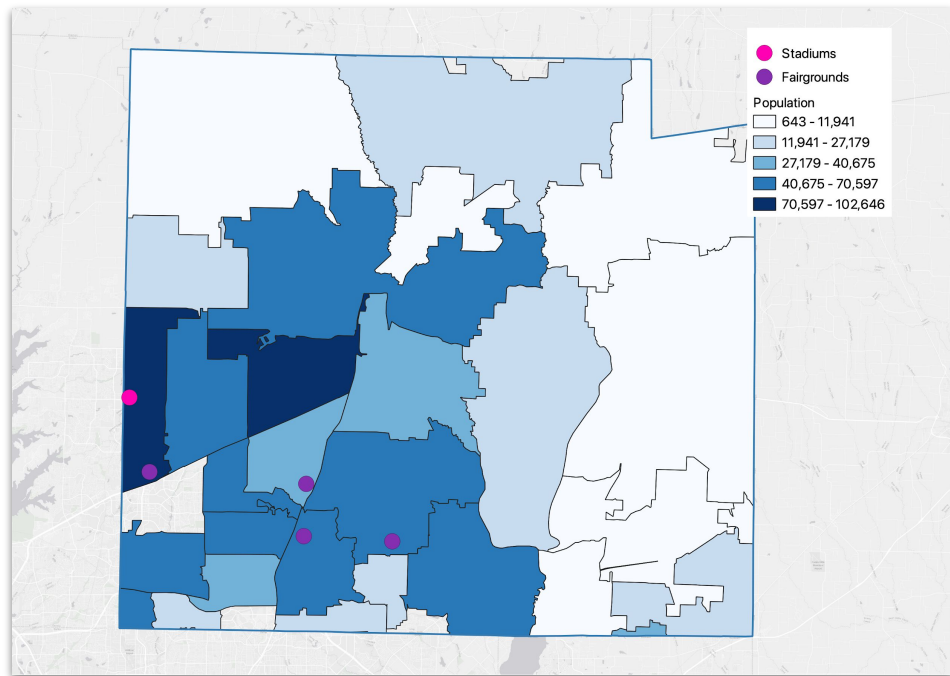
Facility Type	Number of Residents	Number of doses (for two-dose vaccine)	Doses per day (to immunize in 30 days)	Approx number of mobile units*
Nursing Homes	3,200	6,400	200	1
ALFs	3,600	7,200	200	1

*Note: these figures will vary. The estimate is based on mobile units dispatched to facilities that have 300 residents and staff or larger. The max capacity of vaccination sites will be higher during phase 2, when drive-through mass vaccination sites are active.

A PHASED APPROACH TO VACCINE DISTRIBUTION

Curative will administer **one million doses of COVID-19 vaccine per week** during **Phase 2**

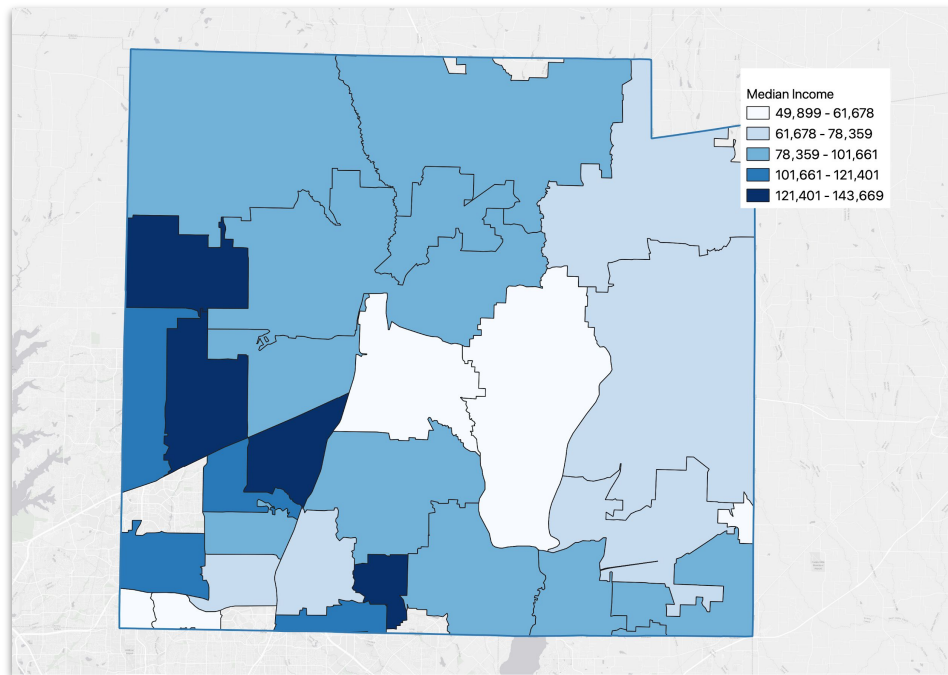
To address the general population, we will operate **mass-vaccination clinics** at large, easily accessible sites such as sports stadiums across the state.



A PHASED APPROACH TO VACCINE DISTRIBUTION

Curative will ensure **second dosing** and deploy mobile units to **rural populations** in Phase 3

To ensure effective immunity, Curative will continue operating **mass vaccination sites**. To reach rural and underserved communities, Curative will deploy **mobile vaccination teams**.

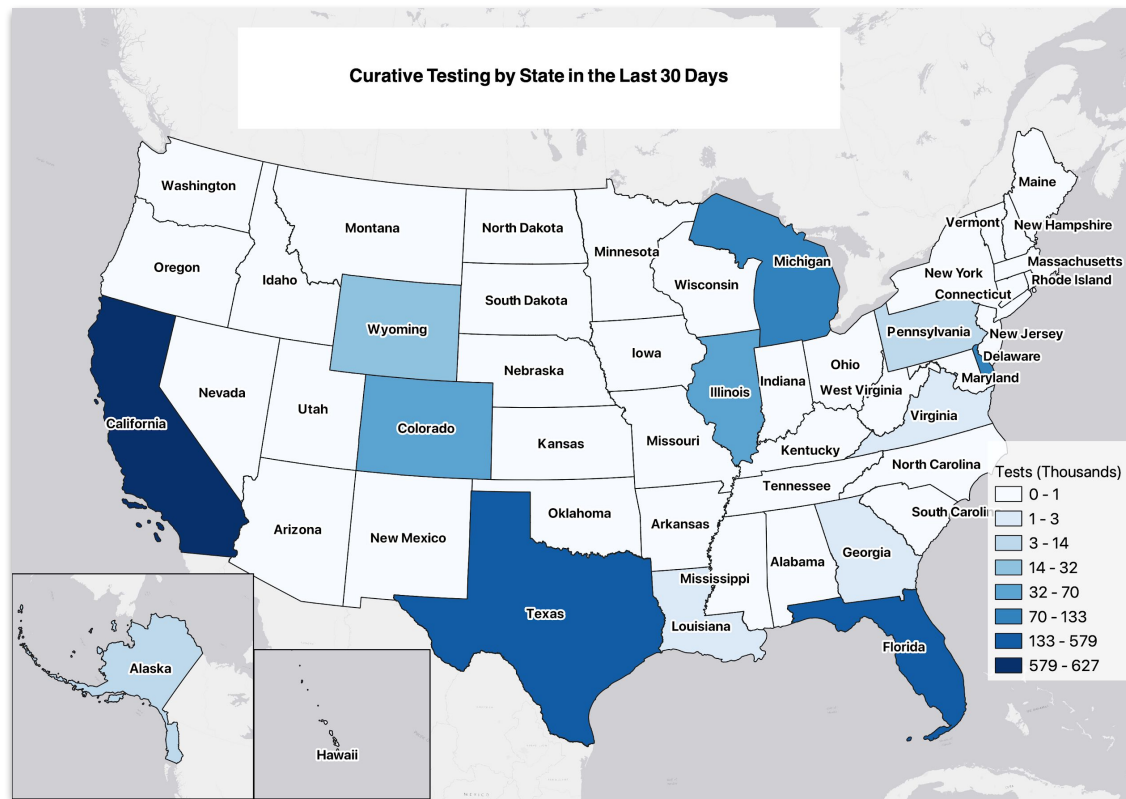


Curative's plan builds on
proven partnerships,
robust software, and
effective infrastructure.

AN EXISTING NETWORK OF TEST SITES

Curative has a **nation-wide network** of testing sites that can be converted to vaccination sites.

Strong presence in **California, Texas, Florida, Colorado, Illinois, Michigan, Delaware, and many other states.**



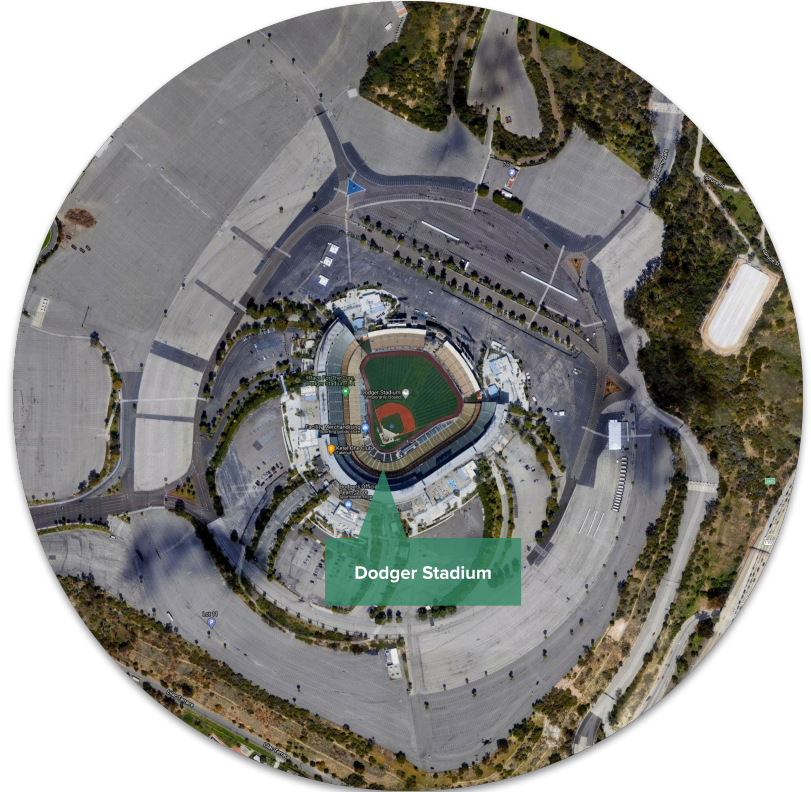
CURATIVE STADIUM SITE



Dodger Stadium averages **6,000** COVID-19 tests per day & has been in operation since June 2020.



The site has completed over **700,000** tests in total and over **50,000** tests last week.



Curative's megasite at Dodger's Stadium in Los Angeles



POTENTIAL STADIUM SITES

Potential Stadium Partners across Collin County

Plano Centre, Plano



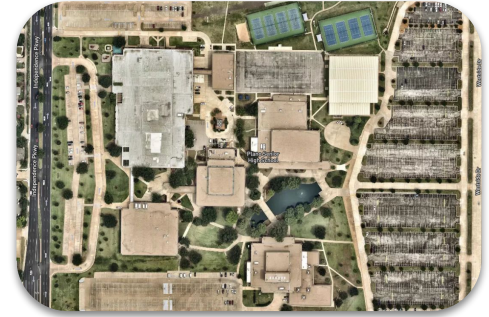
Plano Centre has two large parking lots with different entry ways capable of supporting an easy to operate vaccination flow to accommodate the masses.

John Clark Field, Plano



John Clark Stadium huge multi-use stadium located in the center of Plano. This stadium has access to multiple parking lots capable of running a massive vaccination project. This stadium can serve as the central hub of vaccinations for Plano.

Plano Senior High School, Plano



Home of the Wildcat, Plano Senior High School High School has several medium capacity parking lots separated by dividers that can make it extremely easy to stand-up a high-capacity vaccination site. This site can serve as a community center as its surrounded by a plethora of residential areas.

A ROBUST SUPPLY CHAIN & COLD CHAIN

Curative manages a supply chain and cold chain to safely store doses of vaccine, in compliance with CDC standards.

Curative can work with any (or many) vaccine manufacturing partners. We can either integrate with manufacturer's logistics chains or use our own.

From our own or our partners' warehouse facilities, Curative will distribute doses to mass vaccination sites, kiosks, and mobile units.

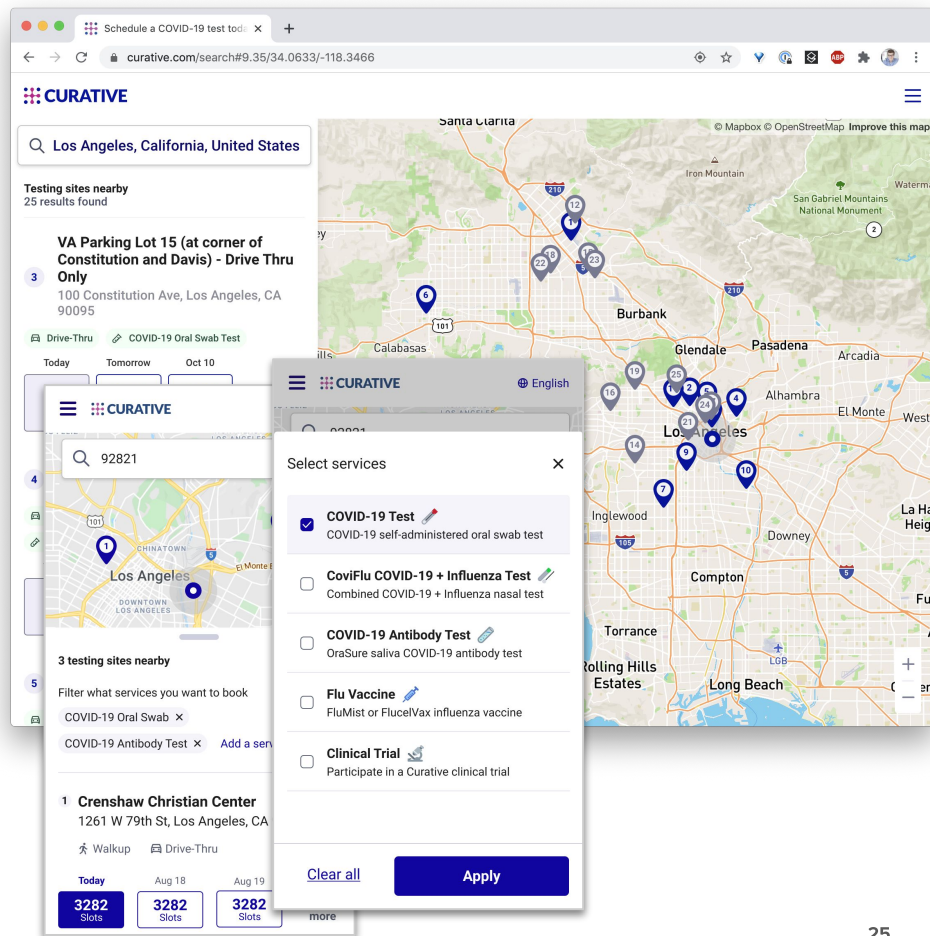
Curative has a national logistics network:

1. Medical-grade freezers to store vaccine doses at -80°C
 - Capacity to store **1.5+ million doses** at a given time
2. Supply chain for PPE and site setup equipment.
3. Logistics partnerships (with PGL and UPS).
4. 100 vans and kiosks in operation or in production (with the ability to scale up as needed).

SOFTWARE & PUBLIC HEALTH REPORTING

Curative's custom built software suite includes a patient-facing appointment scheduler and email notifications.

- One website for patients to view all Curative sites across the country and book appointments
- Over 100,000 users every day.



Curative's patient management system will send reminders for the second dose, and all necessary patient health communications.

After vaccination, patients will receive a notification with a link to register with the CDC V-SAFE system.

4595483 Olivia Maihan 11/30/1950

Scheduled

Appointment Site	Date	Time
Alzar School	Tue 12/22/2020	Walk-In

[See appointment details...](#)

D1

COVID-19 Vaccine - Dose 1

Vaccine Type

Pfizer Vaccine

Full Name of the Nurse

Search for nurse name

Set the nurse of the day

Lot Number

ABC00000

Set the lot number of the day

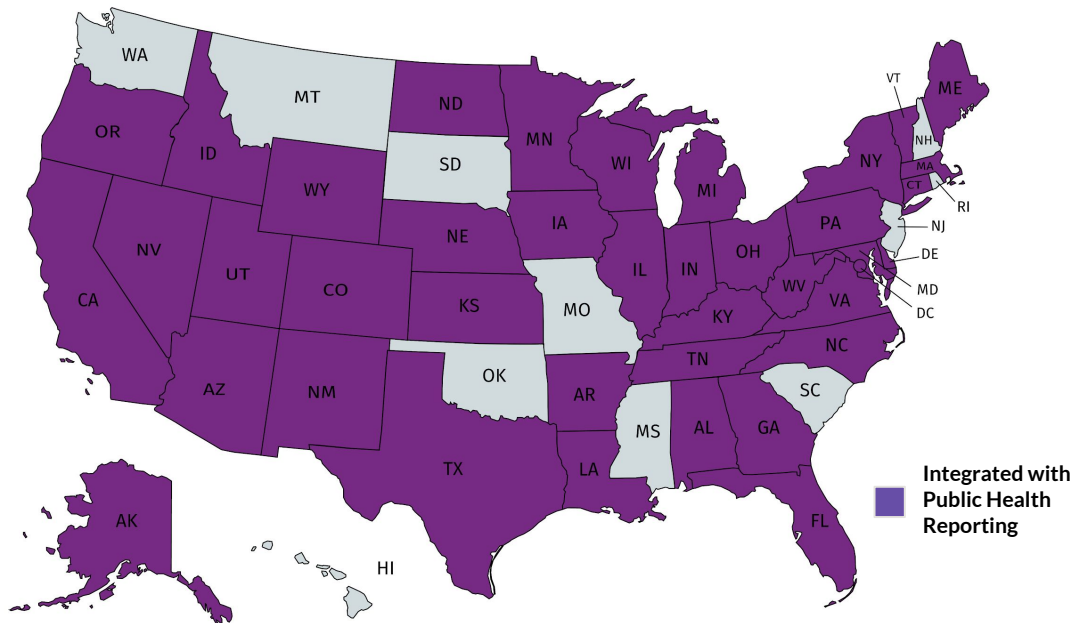
Site

☐ Left Arm ☐ Right Arm

Finish administration

Curative is set up to **bill** patient insurance and **CARES Act** funding for the uninsured.

Curative has integrated with **public health reporting systems** in **37** states and counting.



PATIENT OUTREACH AND SUPPORT

Patient engagement will be key in combating vaccine hesitancy.

Our marketing and social media team interact with patients to address concerns and promote local health services.

Curative operates two US-based call centers active Mon-Sat from 5 am - 8 pm.



PROVEN LOCAL PARTNERSHIPS



TEXAS
Health and Human
Services



TCU



Sam Houston
State University



TEXAS  STATE
UNIVERSITY



CONTACT

Cristin Meehan
cristinmeehan@curative.com
206-719-0973

Jamil Sabbagh
jamil@curative.com
909-896-5448

curative.com

Appendix:



AN EXISTING NETWORK OF LABS

3 CLIA-certified Covid-19 labs:
largest in the western
hemisphere, with ability to scale
up capacity when needed

