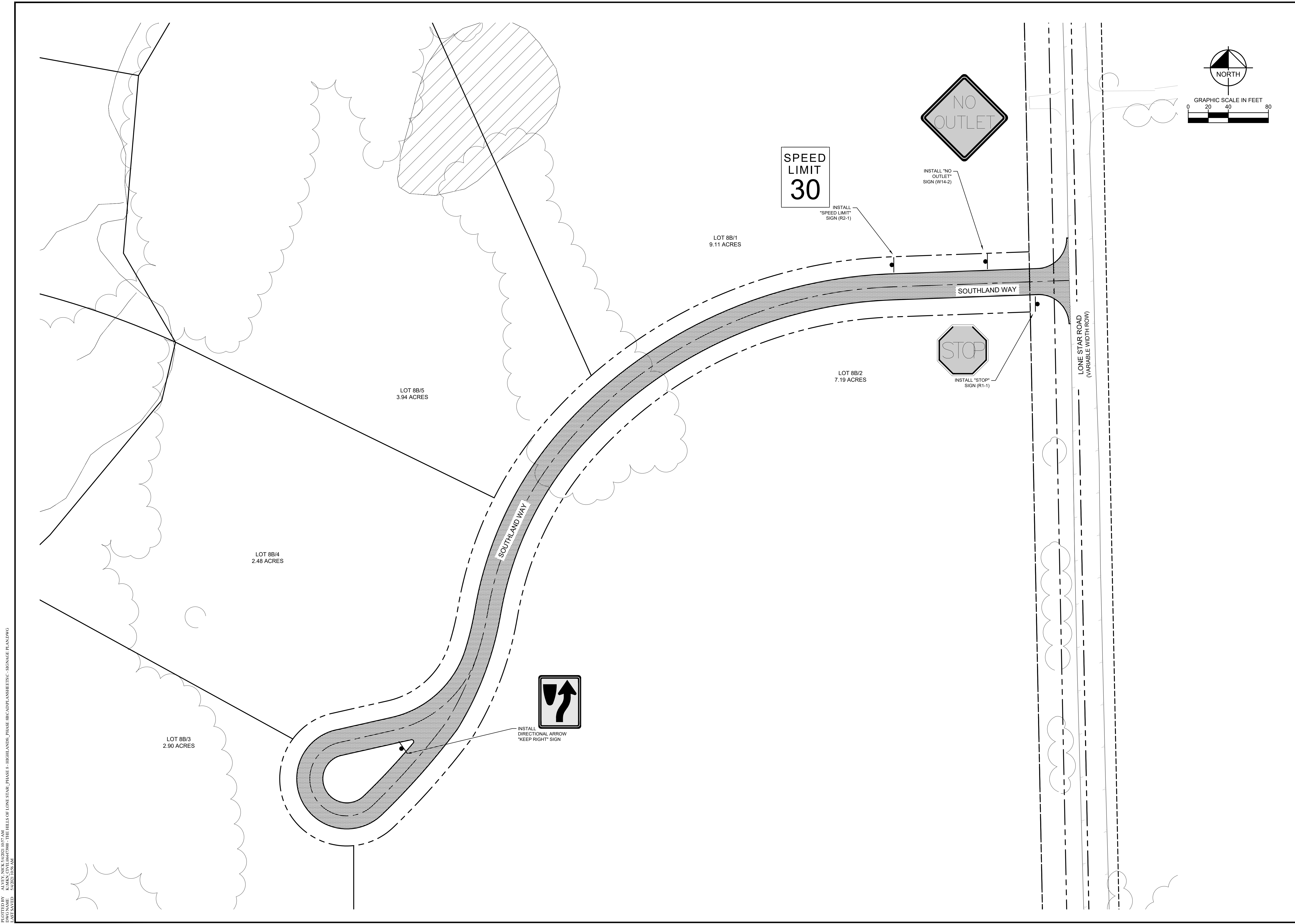


NOTES
1. XREF: 880401 - XREF: 880401 - XREF: 880401 - PS: 88
2. PLOTTED BY: ALVIA, NICK 5/20/21 10:57 AM
3. LAST SAVED: 5/20/21 10:56 AM



NO.	REVISIONS	DATE	BY

Kimley»Horn
280 E DAVIS STREET, STE 100, MCKINNEY, TX 75069
WWW.KIMLEY-HORN.COM | PHONE: 972.580.1800 | FAX: 972.580.1808
© 2021 KIMLEY-HORN AND ASSOCIATES, INC.

FOR REVIEW ONLY
Not for construction or permit purposes.
Kimley»Horn
Project: 064473900
Date: MAY 2021
Scale: AS SHOWN
Designed by: ETJ
Drawn by: ETJ
Checked by: JEH

KHA PROJECT:
064473900
DATE:
MAY 2021
SCALE:
AS SHOWN
DESIGNED BY:
ETJ
DRAWN BY:
ETJ
CHECKED BY:
JEH

THE HILLS OF LONESTAR
PHASE 8B/HIGHLANDS
COLLIN COUNTY, TX
PREPARED FOR
LONE STAR PARTNERS

SIGNAGE PLAN

SHEET NUMBER
C-600