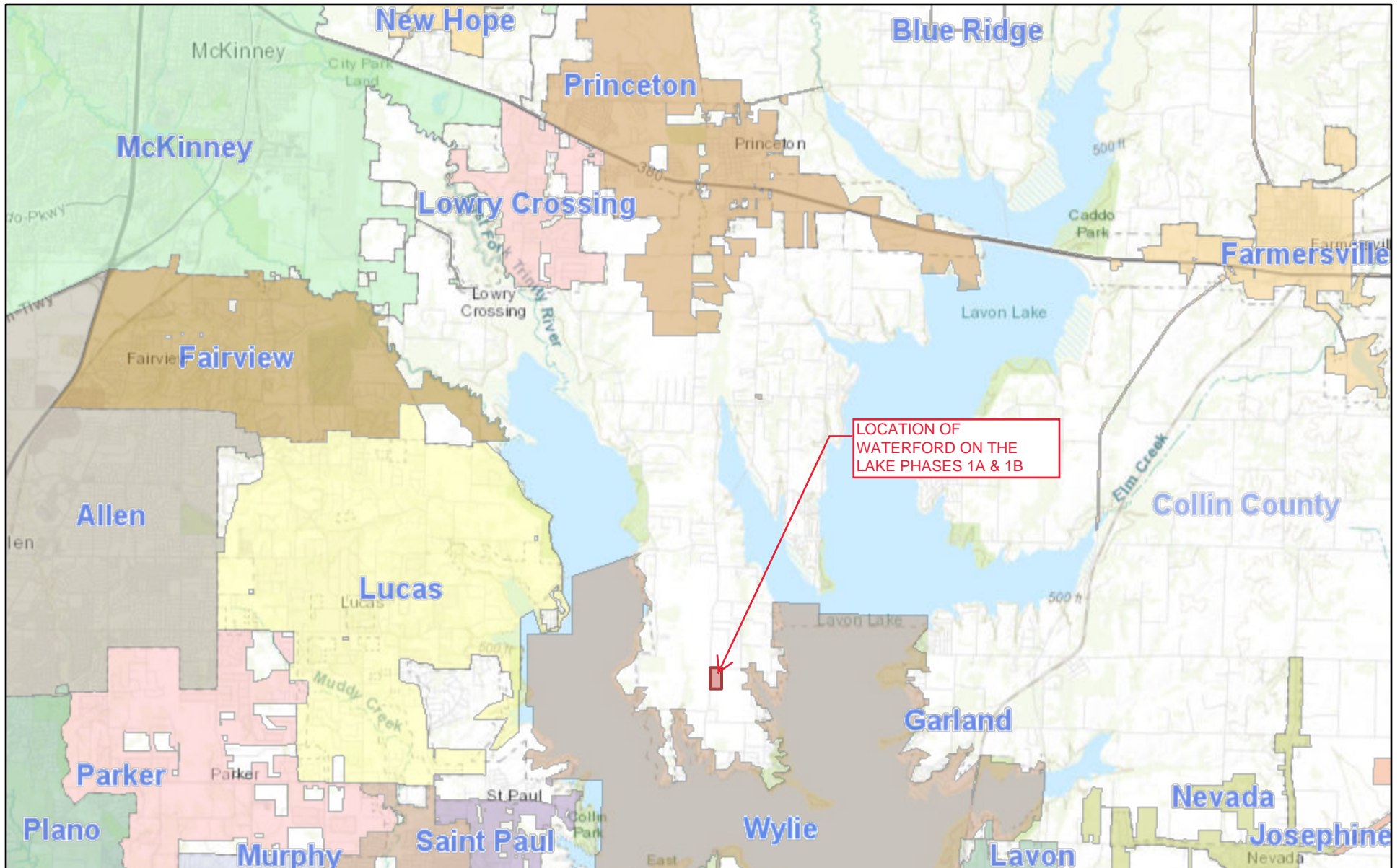


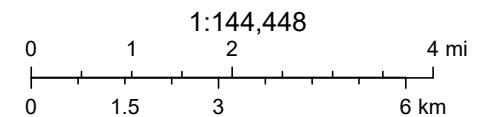
WATERFORD ON THE LAKE C.C. MUD #4



5/25/2021, 9:08:02 AM

Waterford phases 1A & 1B are located at the intersection of FM 982 and CR 439, approximately 7.6 miles south of Princeton.

- City
- County



Sources: Esri, HERE, Garmin, Intermap, increment P Corp., GEBCO, USGS, FAO, NPS, NRCAN, GeoBase, IGN, Kadaster NL, Ordnance Survey, Esri

ArcGIS Web AppBuilder
Texas Parks & Wildlife, Esri, HERE, Garmin, USGS, NGA, EPA, USDA, NPS | Gabriela, bmf |