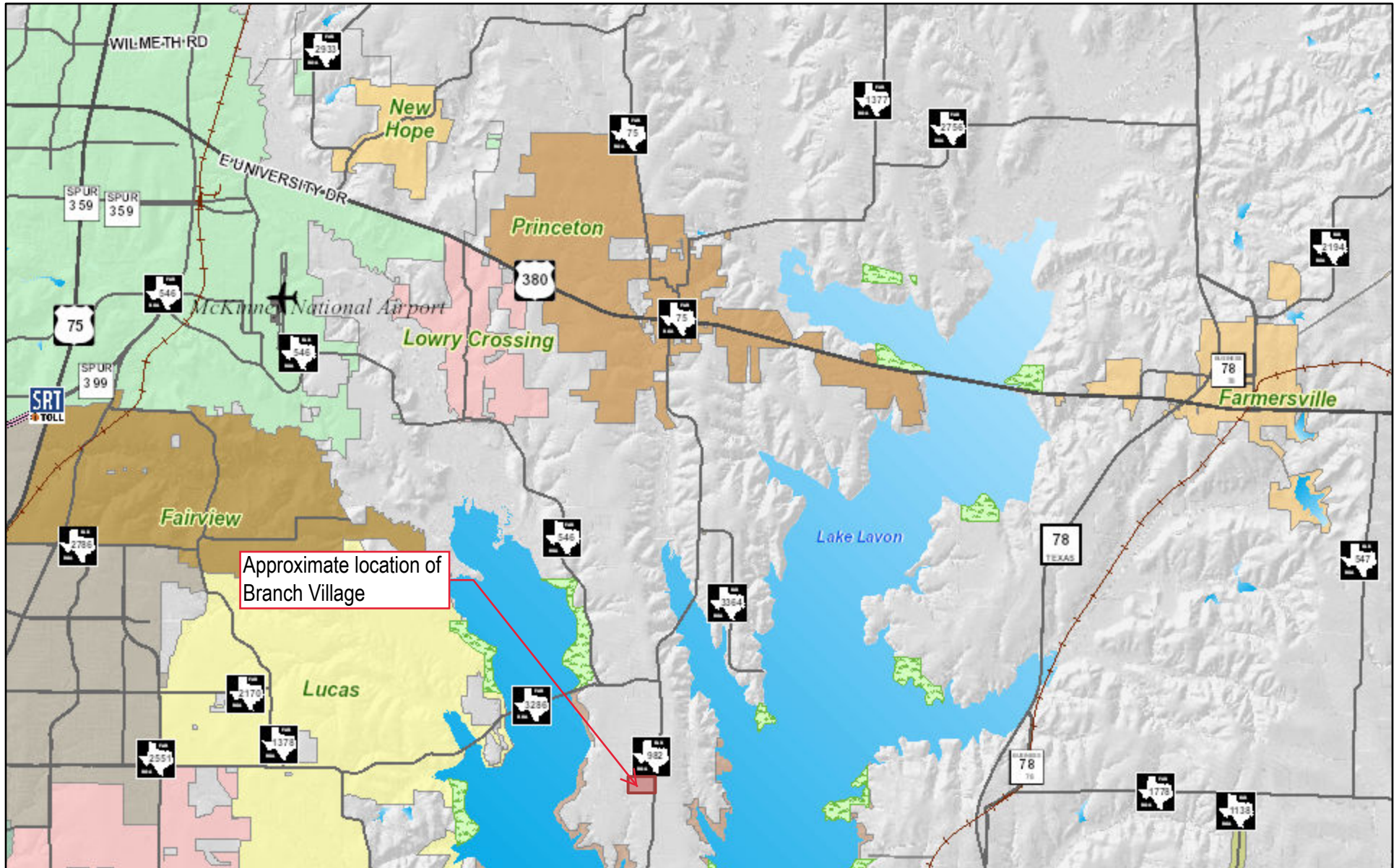


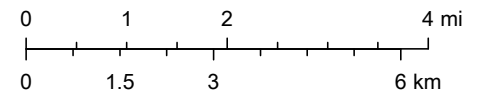
# BRANCH VILLAGE



3/9/2020, 3:47:30 PM

BRANCH VILLAGE IS LOCATED ON THE WEST SIDE OF FM 982 APPROXIMATELY 6.5 MILES SOUTH OF PRINCETON.

1:144,448



Collin County, Sources: Esri, HERE, Garmin, Intermap, increment P Corp.,