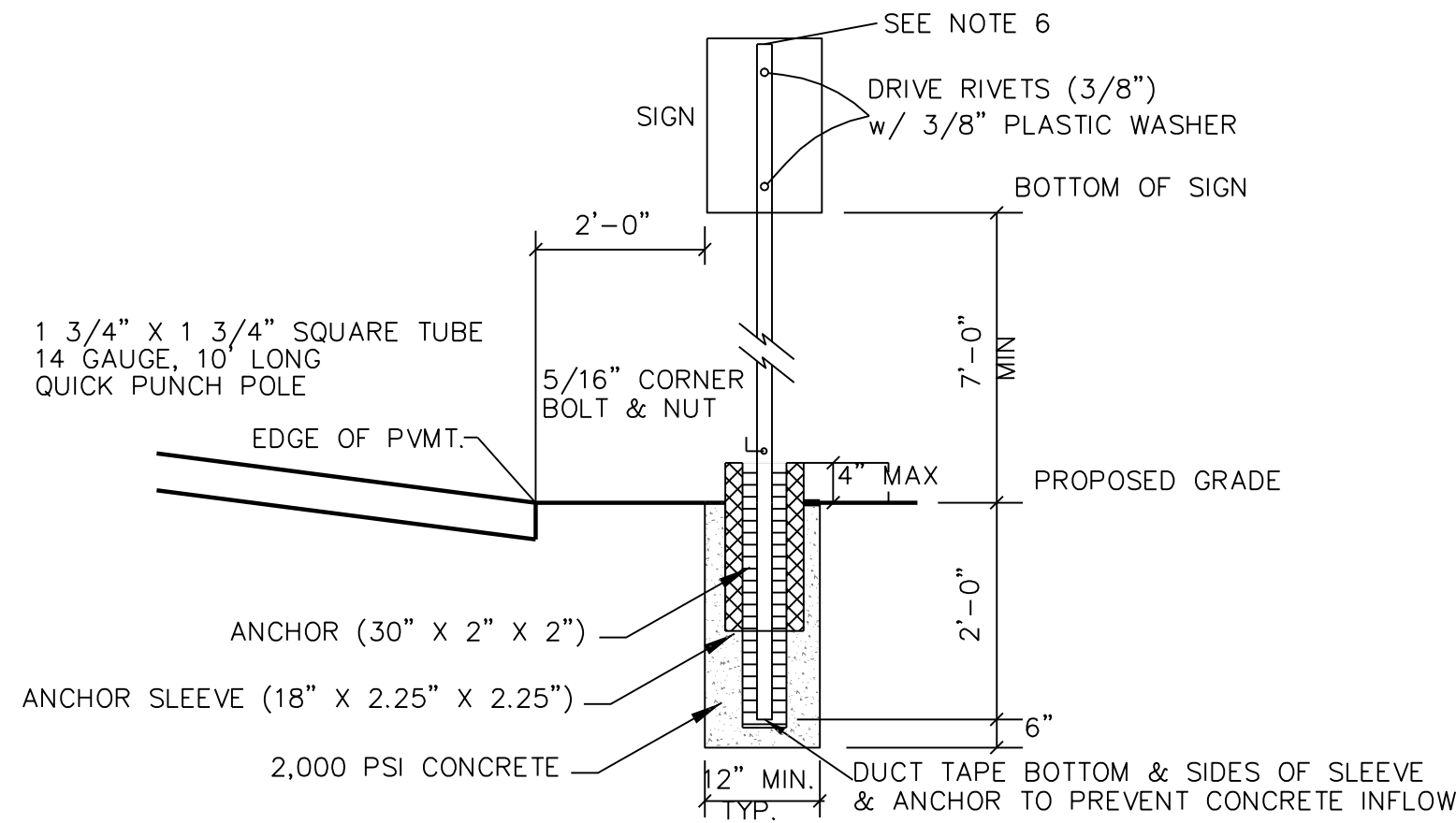


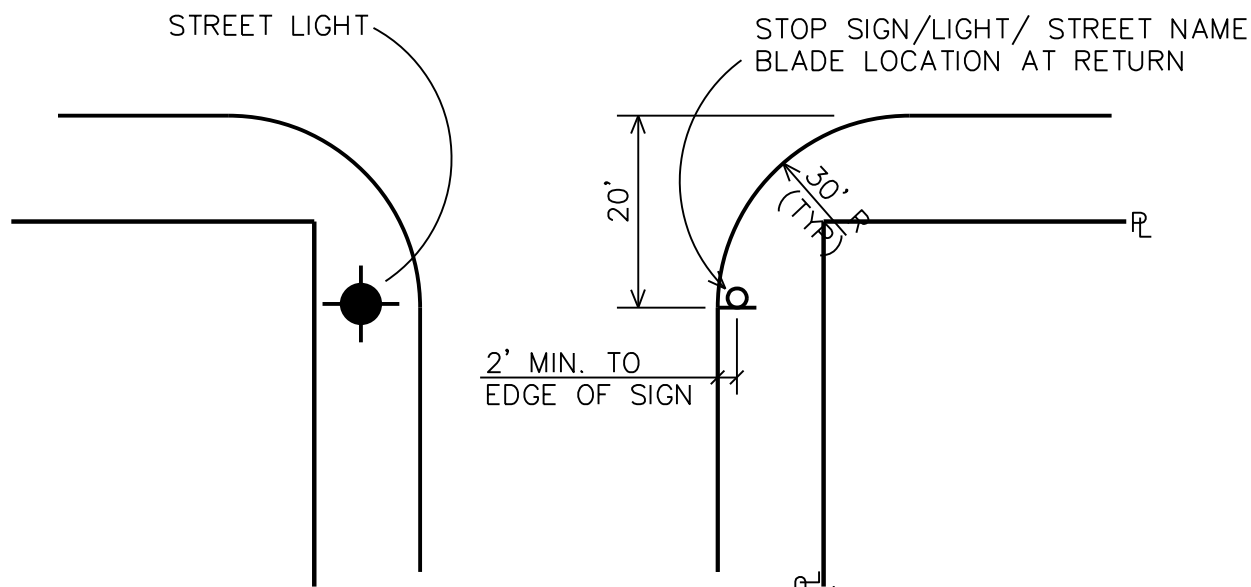
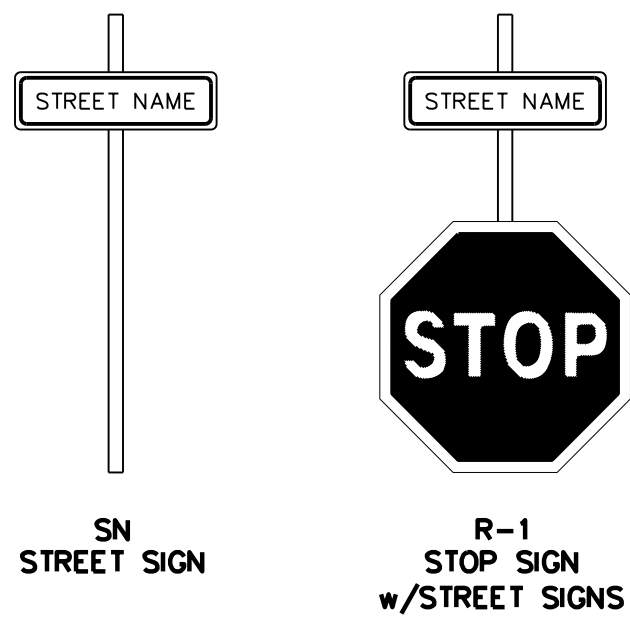
TRAFFIC CONTROL NOTES:

1. ALL SIGNAGE, BARRICADES, AND PAVEMENT MARKINGS SHALL BE IN ACCORDANCE THE TEXAS MANUAL ON UNIFORM TRAFFIC CONTROL DEVICES (2011 EDITION - REVISION 2) AND THE STANDARD HIGHWAY SIGN DESIGN FOR TEXAS (2017).
2. LOCATIONS SHOWN FOR SIGNAGE AND PAVEMENT MARKINGS ARE APPROXIMATE; FINAL LOCATIONS MAY CHANGE DUE TO POST CONSTRUCTION CONDITIONS AND PRESENCE OF OTHER PHYSICAL FEATURES. FINAL LOCATION OF ALL TRAFFIC CONTROL DEVICES SHALL BE FIELD VERIFIED WITH COUNTY PRIOR TO INSTALLATION.
3. ALL PAVEMENT MARKINGS OTHER THAN BUTTONS SHALL BE THERMOPLASTIC UNLESS OTHERWISE NOTED.
4. ALL SIGNS SHALL BE HIGH INTENSITY AND THE SIZES SHALL BE STANDARD UNLESS OTHERWISE NOTED.
5. ALL TRAFFIC SIGNS, POSTS, AND MATERIALS SHALL BE INSTALLED PER DETAIL THIS SHEET.
6. FOR STOP SIGNS THAT WILL ACCEPT FUTURE STREET SIGNS, EXTEND POST ABOVE STOP SIGN SO THAT 2 HOLES ARE AVAILABLE FOR MOUNTING. (FOR ALL OTHERS, POST SHALL NOT EXTEND ABOVE SIGN.)
7. CHANGES TO TYPICAL SIGN POST LOCATION MADE AT ENGINEER'S DISCRETION.
8. ALL STREET SIGNS, POSTS AND MOUNTING HARDWARE SHALL BE FURNISHED BY THE DEVELOPER, APPLICANT OR OWNERS (AT HIS OR HER EXPENSE).

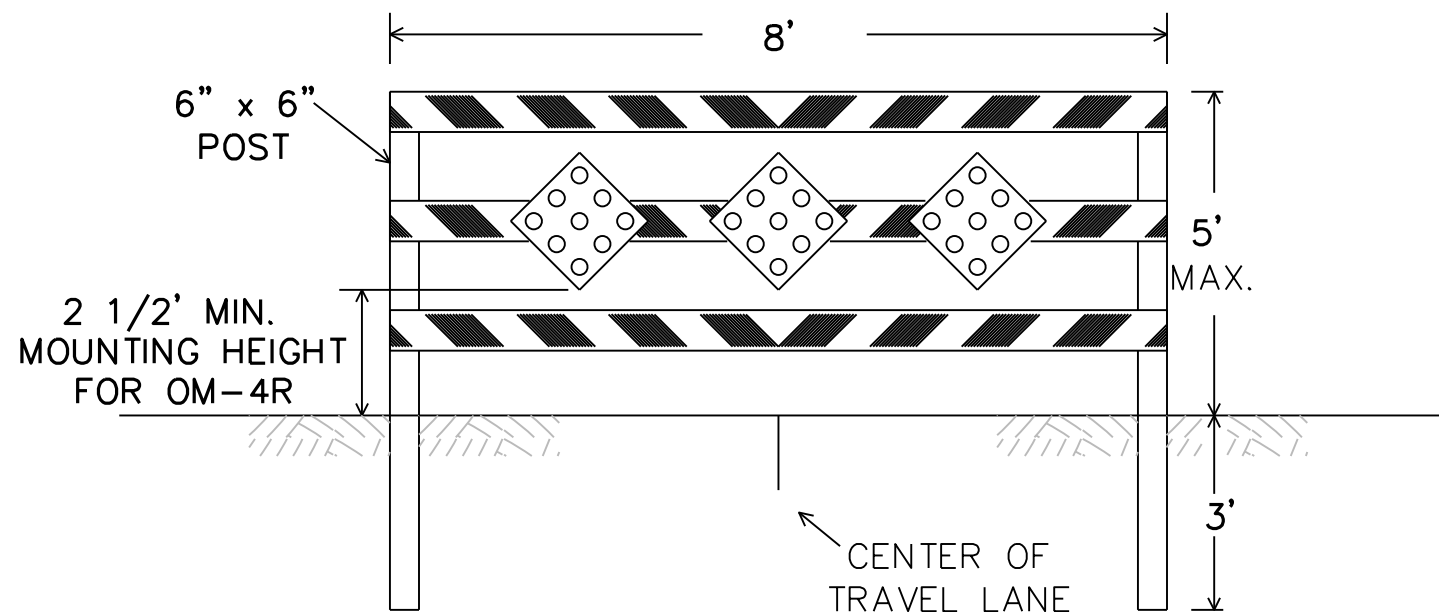


SIGN POST DETAIL  
N.T.S.

- SIGN POST DETAIL NOTE:
1. SIGN POST SHALL BE PLACED AT A MINIMUM 3' FROM FIRE HYDRANTS.



TYPICAL STREET LIGHT &  
STOP SIGN W/STREET SIGN LOCATION INTER  
N.T.S.



TYPICAL DEAD END BARRICADE INSTALLATION

1. BARRICADE STRIPING SHALL BE RED AND WHITE REFLECTIVE SHEETING FOR ALL PERMANENT ROAD CLOSURES. ORANGE AND WHITE REFLECTIVE SHEETING MAY BE SUBSTITUTED FOR LOCATIONS WHERE DURATION OF ROAD CLOSURE IS EXPECTED TO BE 18 MONTHS OR LESS, OR WHEN APPROVED BY THE ENGINEER. RED AND ORANGE REFLECTIVE SHEETING SHALL NOT BE COMBINED ON BARRICADES OR LOCATIONS.

LEGEND

- STREET LIGHT
- STREET SIGN (SN)
- STREET SIGN (SN) STOP SIGN (ST)
- BARRICADE SIGN (BC)

BENCHMARKS:

CONTROL POINT 5  
X CUT IN CONCRETE PAVEMENT OF STARR DRIVE, LOCATED 320' +/- WEST OF THE CENTERLINE OF NEW HOPE ROAD (FARM TO MARKET ROAD 1827), 30' +/- NORTH OF THE CENTERLINE OF STARR DRIVE, 2' +/- SOUTHWEST FROM THE EDGE OF THE CONCRETE PAVEMENT, AND 80' +/- EAST FROM THE SOUTHWEST CORNER OF LOT 4, BLOCK A (6407 STARR DRIVE)  
ELEVATION = 604.55

CONTROL POINT 4  
X CUT IN CONCRETE PAVEMENT OF SHERRI LANE, LOCATED 490' +/- EAST OF THE INTERSECTION OF SHERRI LANE AND PERINE LANE, 30' +/- SOUTH OF THE CENTERLINE OF SHERRI LANE, 3' +/- WEST FROM THE EDGE OF THE CONCRETE PAVEMENT, 20' +/- WEST FROM THE SOUTHWEST CONRNER OF LOT 40, BLOCK A.  
ELEVATION = 597.47

STREET LIGHT AND SIGN PLAN

MELISSA FARMS - PHASE 2  
COLLIN COUNTY, TEXAS

**PETITT & ASSOCIATES**  
ENGINEERING SURVEYING CONSTRUCTION ADMINISTRATION

800 N. Watters Road, Suite 130  
Allen, Texas 75013  
Tel. No. (214) 221-9955  
Fax No. (214) 340-3550

DESIGN	CHECKED	DATE	SCALE	NOTES	FILE	SHEET NO.
PA	PA	DEC 2020	1"=100'		20005-02	39

