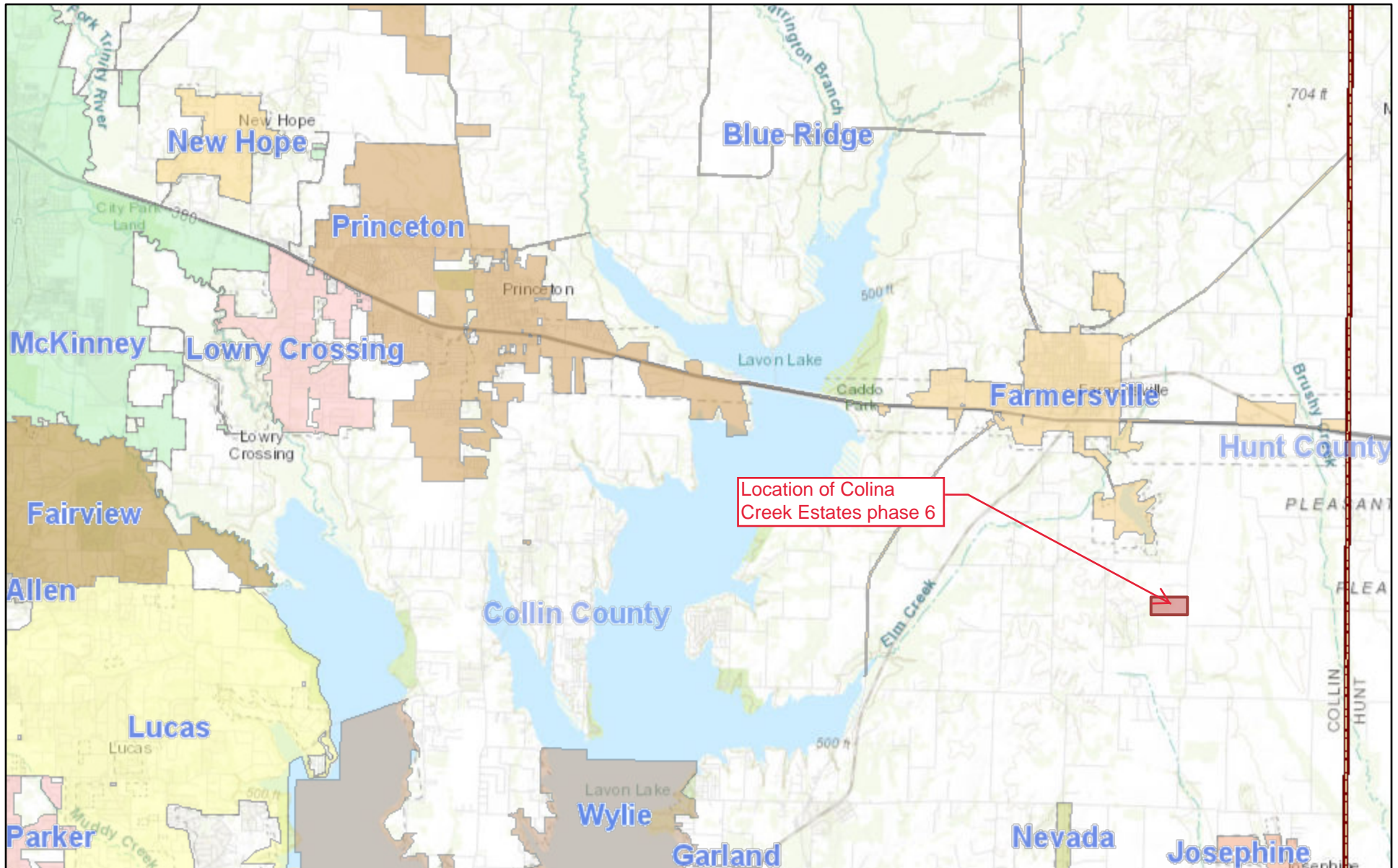


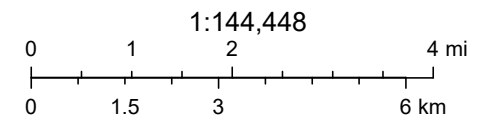
COLINA CREEK ESTATES PHASE 6



7/6/2021, 8:19:24 AM

- City
- County

Colina Creek Estates phase 6 is located along FM 547 approximately 2.8 miles south of the City of Farmersville.



Sources: Esri, HERE, Garmin, Intermap, increment P Corp., GEBCO, USGS, FAO, NPS, NRCAN, GeoBase, IGN, Kadaster NL, Ordnance Survey, Esri

ArcGIS Web AppBuilder
Texas Parks & Wildlife, Esri, HERE, Garmin, USGS, NGA, EPA, USDA, NPS | Gabriela, bmf |