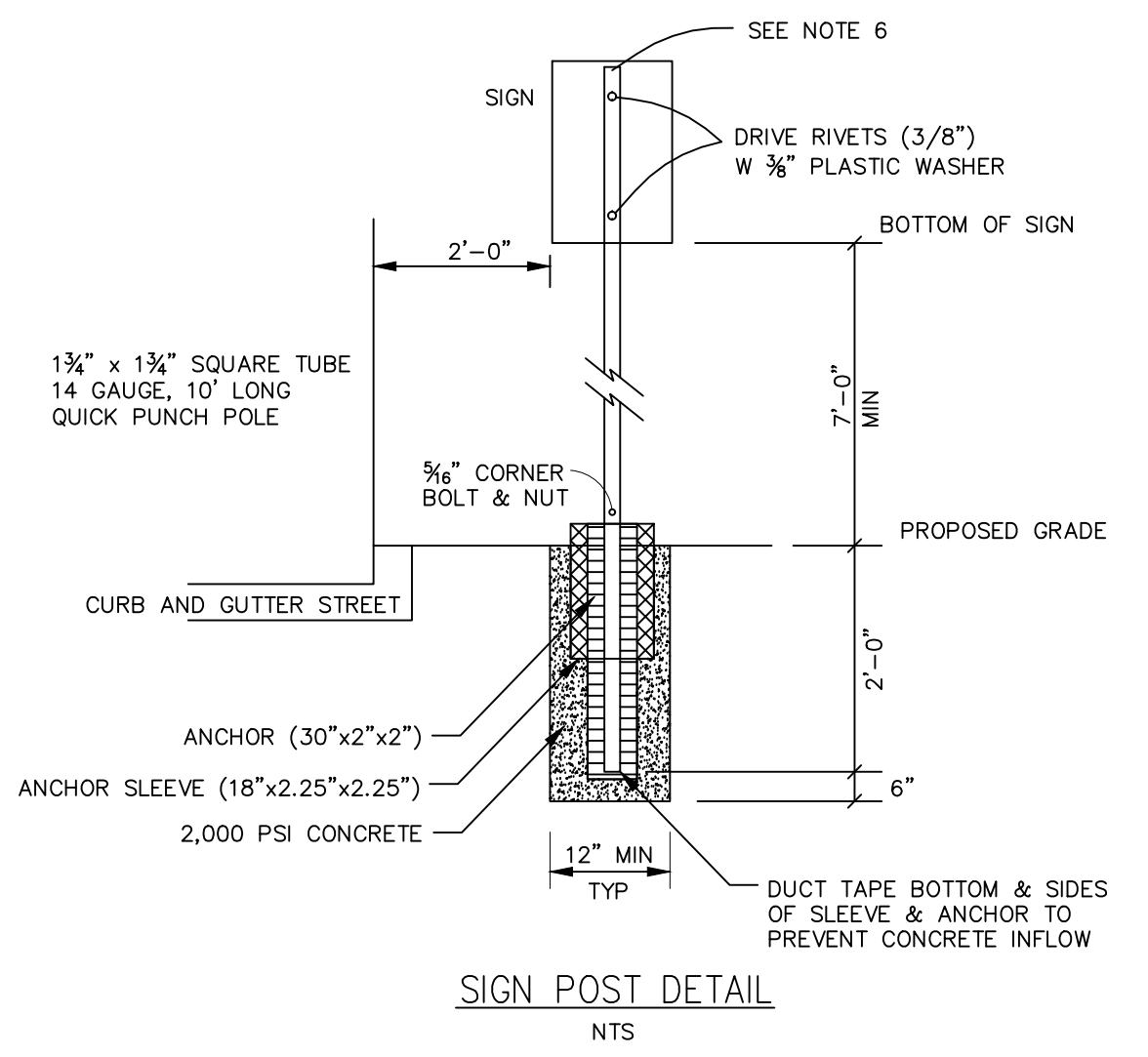


**STREET LIGHT & STOP SIGN TYPICAL LOCATION (RESIDENTIAL/ LOCAL STREETS)**  
NTS

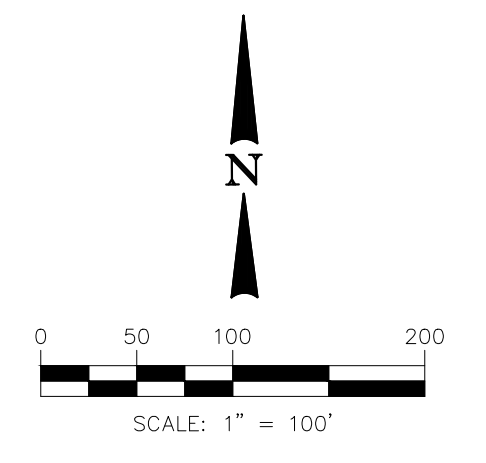
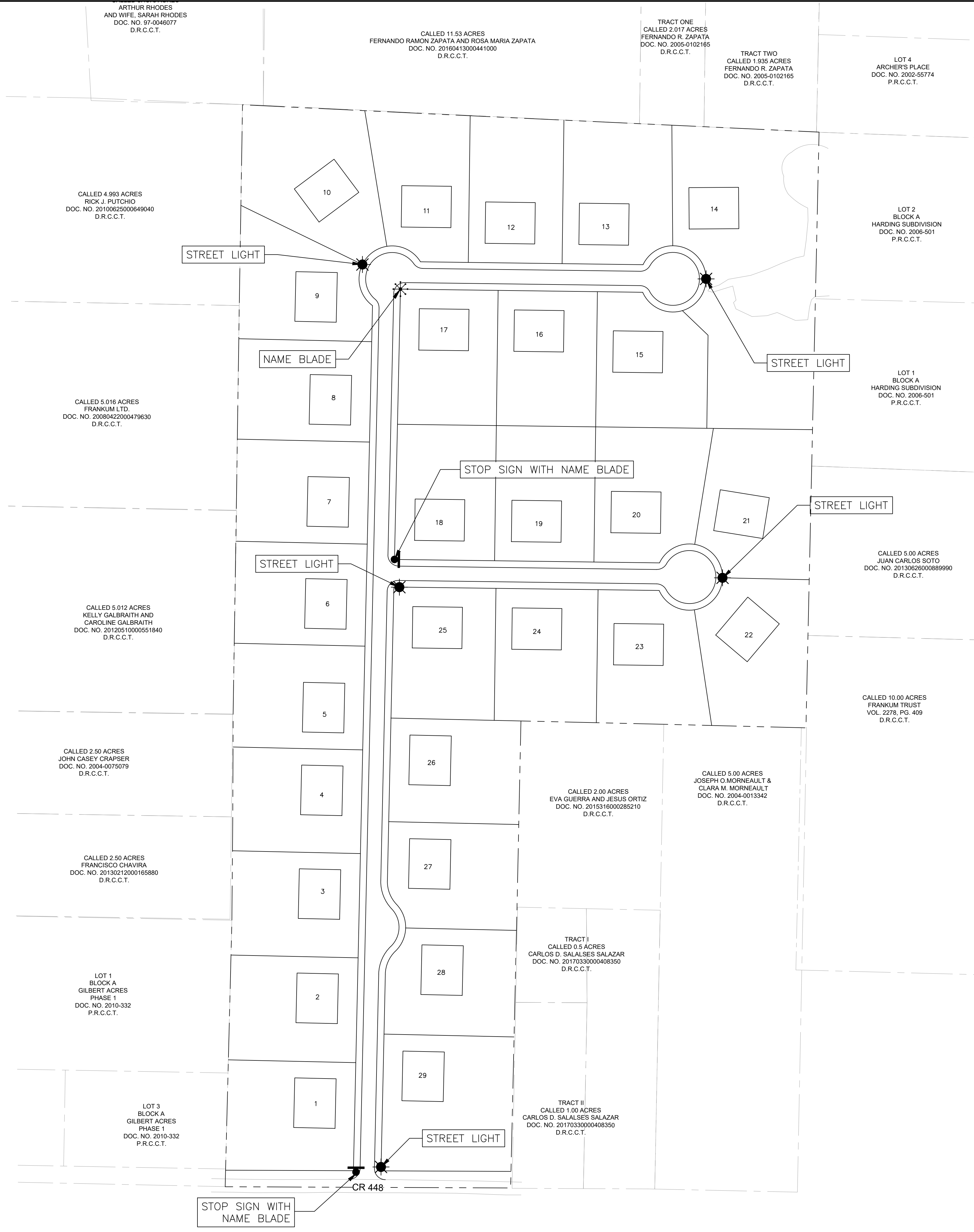


**SIGN POST DETAIL**  
NTS



**STREET SIGN DETAIL**  
NTS

- STREET SIGNS SHALL BE MANUFACTURED WITH ENGINEER GRADE REFLECTIVE WHITE LETTERS ON RED ENGINEER GRADE REFLECTIVE SHEETING BACKGROUND.
- LETTERING SHALL BE 4" INITIAL CAPITAL AND 3" LOWERCASE WITH CLEARVIEW FONT.
- ALL SIGNS SHALL BE CONSTRUCTED OF MATERIAL CONFORMING TO THE REQUIREMENTS OF THE TEXAS MANUAL ON UNIFORM TRAFFIC CONTROL DEVICES, LATEST EDITION, AND INSTALLED BY THE DEVELOPER OR OWNER.



**LEGEND**

- PROPOSED STREET LIGHT LOCATION
- PROPOSED STREET SIGN LOCATION
- PROPOSED STOP SIGN LOCATION WITH NAME BLADE

**NOTES:**

- ALL SIGNAGE, BARRICADES, AND PAVEMENT MARKINGS SHALL BE IN ACCORDANCE WITH THE LATEST REVISION OF THE TEXAS MANUAL ON UNIFORM TRAFFIC CONTROL DEVICES AND THE STANDARD HIGHWAY SIGN DESIGN FOR TEXAS (1980)
- LOCATIONS SHOWN FOR SIGNAGE AND PAVEMENT MARKINGS ARE APPROXIMATE; FINAL LOCATIONS MAY CHANGE DUE TO POST CONSTRUCTION CONDITIONS AND PRESENCE OF OTHER PHYSICAL FEATURES. FINAL LOCATION OF ALL TRAFFIC DEVICES SHALL BE FIELD VERIFIED WITH CITY PRIOR TO INSTALLATION.
- ALL PAVEMENT MARKINGS OTHER THAN BUTTONS SHALL BE THERMOPLASTIC UNLESS OTHERWISE NOTED.
- ALL SIGNS SHALL BE HIGH INTENSITY AND THE SIZES SHALL BE STANDARD UNLESS OTHERWISE NOTED.
- ALL TRAFFIC SIGNS, POSTS, AND MATERIALS SHALL BE INSTALLED PER DETAIL THIS SHEET.
- FOR STOP SIGNS THAT WILL ACCEPT FUTURE STREET SIGNS, EXTEND POST ABOVE STOP SIGN SO THAT 2 HOLES ARE AVAILABLE FOR MOUNTING. (FOR ALL OTHERS, POST SHALL NOT EXTEND ABOVE SIGN.)
- CHANGES TO TYPICAL SIGN POST LOCATION MADE AT ENGINEER'S DISCRETION.

**BGE, Inc.**  
2595 Dallas Parkway, Suite 101  
Frisco, TX 75034  
Tel: 972-464-4800 • www.bgeinc.com  
TBPE Registration No. F-1046  
Contact: Garrett Scoggins  
Tel: (972) 464-4858  
Copyright 2021

**OWNER / DEVELOPER**  
**UNIVERSAL DEVELOPER**  
305 W. SPRING CREEK PKWY., SUITE 100B  
PLANO, TEXAS 75023  
CONTACT: HEMAL DOSHI  
PHONE:

**UNIVERSAL DEVELOPER**  
**ON-SITE INFRASTRUCTURE**  
**PRINCETON LAKESIDE**  
**ESTATES**  
BEING 36.237 ACRES  
COLLIN COUNTY, TEXAS

THESE PLANS ARE ISSUED FOR THE PURPOSE OF PRELIMINARY REVIEW AND ARE NOT INTENDED FOR CONSTRUCTION. FINAL FORM THEY WILL BE SEALED, SIGNED AND DATED.

RESPONSIBLE ENGINEER:  
BGE, INC.  
TEXAS REGISTERED ENGINEERING FIRM F-1046  
GARRETT M. SCOGGINS, P.E.  
TEXAS REGISTRATION NO. 137057  
AUGUST 06, 2021

**!CAUTION !**  
Contractor to Verify exact location & Depth of Exist Facilities Prior to any Construction Activities

**CAUTION !!!**  
CONTACT: 1-800-DIG-TESS  
48 HOURS PRIOR TO CONSTRUCTION

REV. NO.	DATE	DESCRIPTION

DRAWN BY: TWC  
CHECKED BY: GMS  
DATE: July 2021  
PROJECT NUMBER: 8772-00

**STREET SIGN AND LIGHT PLAN**  
SHEET NO.  
23

BGE, INC. © 2021. All rights reserved. Project: Princeton Lakeside Estates, D:\Projects\2021\Princeton Lakeside Estates\1700 Wayne St\1700 Wayne St.dwg, Aug 06, 2021 8:48am, tbonack