



# COLLIN COUNTY

Office of the Purchasing Agent  
2300 Bloomdale Road  
Suite 3160  
McKinney, Texas 75071  
www.collincountytx.gov

COLLIN COUNTY, TEXAS

ADDENDUM No. EIGHT (8)

IFB No. 2021-239

INVITATION FOR BID

FOR

CONSTRUCTION, COLLIN COUNTY ADULT DETENTION FACILITY, PHASE 1 ADDITION

DATE: SEPTEMBER 2, 2021

NOTICE TO ALL PROSPECTIVE BIDDERS:

PLEASE MAKE THE FOLLOWING CHANGES TO THE INVITATION FOR BID:

ADD DOCUMENT: ARCHITECT'S ADDENDUM 7

DELETE DOCUMENT: E301 ADDENDUM 6  
REPLACE WITH: E301 ADDENDUM 7

DELETE DOCUMENT: E302 ADDENDUM 6  
REPLACE WITH: E302 ADDENDUM 7

ADD ATTRIBUTE: #27-ADDENDUM No. 8 ACKNOWLEDGEMENT

DELETE DOCUMENT: SECTION 004100-BID FORM ADDENDUM 7  
REPLACE WITH: SECTION 004100-BID FORM ADDENDUM 8

ALL OTHER TERMS AND CONDITIONS OF THE BID AND SPECIFICATIONS REMAIN THE SAME.

SINCERELY,  
MICHELLE CHARNOSKI, NIGP-CPP, CPPB  
PURCHASING AGENT

JDG

**ADDENDUM NO. 7**

**TO**

**Collin Count Adult Detention Facility, Phase 1  
McKinney, Texas**

September 02, 2021

Project: 21913.00  
From: Brinkley Sargent Wiginton Architects, Inc.  
To: Bidders of Record

This Addendum forms a part of the Contract Documents and modifies the original Bidding Documents.

**DRAWINGS MODIFICATIONS**

Note to bidders on drawing modifications: Any revision made to a sheet as part of this Addendum, regardless of the scale of the modification, results in the reissuance of that full sheet. The description for the revisions follows below, but the full sheet is reissued to allow revised sheets to simply be substituted for the sheets originally issued.

**Item No. 1. Sheet – E301**

A. Revised NBS #10 to read “2 HP” motor.

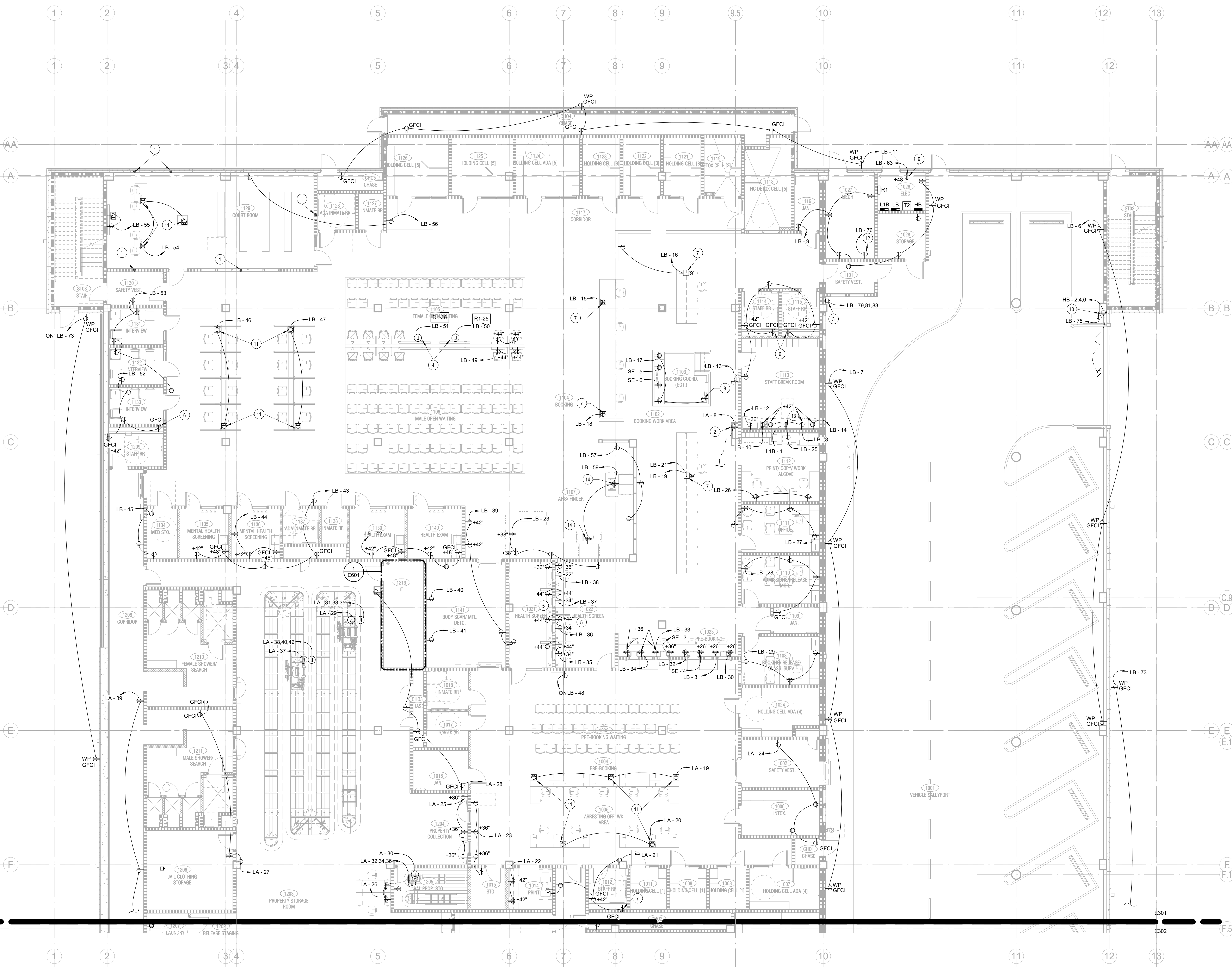
**Item No. 2. Sheet – E302**

A. Revised NBS #2 to read “2 HP” motor.

**ADDENDUM 7 ATTACHMENTS:**

**Drawings as listed above**

**END OF ADDENDUM**



**GENERAL NOTES:**

- NUMBER ASSOCIATED WITH CERTAIN RECEPTACLES (I.E. R2-17) REFERS TO CONTROL RELAY NUMBER. REFER TO RELAY SCHEDULE.
- RECEPTACLES IN ALL DETENTION AREAS:
  - HAVE DETENTION GRADE STAINLESS STEEL COVER PLATES.
  - COVER PLATES SHALL HAVE TORX PLATES FASTNER.
  - BE TAMPER PROOF.
  - BE ON GFCI BREAKER.
- REFER TO SECURITY ELECTRONIC DRAWINGS FOR ALL CIRCUITS LOCATED IN PANEL SE.
- REFER AND COORDINATE WITH I.T. DRAWINGS AND NOTES FOR LOCATIONS OF DATA, INMATE PHONE, KIOSK AND VIDEO VISITATION RELATED BACK BOXES, FLOOR BOXES AND CONDUIT. ALL CONDUIT AND BOXES BY DIV.26.
- REFER AND COORDINATE WITH SECURITY ELECTRONICS DRAWINGS AND NOTES AND PROVIDE ALL CONDUIT FOR THIS SYSTEM. COORDINATE WITH SECURITY ELECTRONICS CONTRACTOR.
- CONDUIT SHALL BE 7" MINIMUM ABOVE FLOOR. CONDUIT ON WALK AREA IS NOT ALLOWED.

**NOTES BY SYMBOL "○":**

- FUTURE RECEPTACLE. PROVIDE 3/4" CONDUIT TO ACCESSIBLE CEILING. PROVIDE RECESSED BACK BOX AND BLANK COVER PLATE.
- POWER FOR PNEUMATIC TUBE SYSTEM. REFER TO ARCHITECTURAL EQUIPMENT PLANS AND SCHEDULE FOR ADDITIONAL PNEUMATIC TUBE SYSTEM INFORMATION.
- POWER FOR OWNER PROVIDED COMPRESSOR. BASIS OF DESIGN: 200V, 3-PHASE, 5HP MOTOR.
- J-BOX IN CEILING FOR POWER TO TV. SWITCH VIA RELAY AS INDICATED.
- RECEPTACLES ON BOTH SIDES OF COUNTER SHALL BE GFCI. TYPICAL OF 12 RECEPTACLES.
- POWER FOR AUTO FLUSH VALVE.
- POWER WHIP TO FEED OUTLETS ON MILLWORK COUNTER. COORDINATE WITH IT CONTRACTOR FOR DATA AT SAME LOCATION. COORDINATE WITH MILLWORK CONTRACTOR.
- POWER FOR KEY TRACER FROM RECEPTACLE.
- POWER FOR IRRIGATION CONTROLLER.
- POWER FOR BIFOLD DOOR AND CONTROLLER. COORDINATE WITH IT CONTRACTOR FOR DATA AT SAME LOCATION. COORDINATE WITH MILLWORK CONTRACTOR.
- COORDINATE EXACT LOCATIONS OF FLOOR BOXES AND STUB UPS WITH ARCHITECT AND FURNITURE PLACEMENT.
- POWER FOR EMS CONTROL CABINETS. REFER TO MECHANICAL DRAWINGS.
- RECEPTACLE UNDER COUNTER FOR GARBAGE DISPOSAL. PROVIDE SWITCH ABOVE COUNTER.
- RECEPTACLE ON SIDE OF MILLWORK CABINET.

# COLLIN COUNTY ADP - PHASE 1 ADDITION

4300 COMMUNITY AVE, MCKINNEY, TX 75071

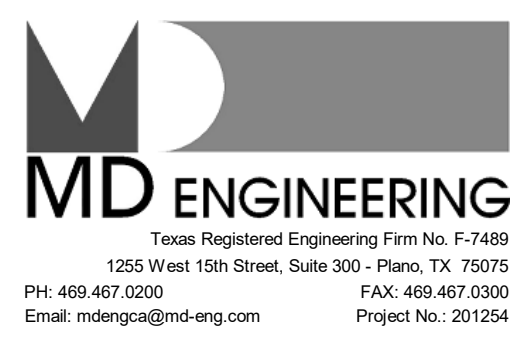
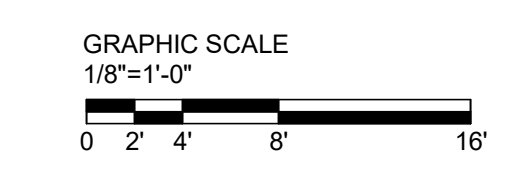
Architect: Brinkley Sargent Wighton Architects(972) 960-9970  
 Civil: Pacheco Koch (214) 451-2765  
 Structural: JQ Engineering (214) 752-9098  
 MEP / IT: MD Engineers (469) 467-0200  
 Security: Latitech (972) 633-8650

**BRINKLEY SARGENT WIGHTON ARCHITECTS**

HISTORY		
#	DATE	DESCRIPTION
2	08/31/2021	ADDENDUM #6
3	09/02/2021	ADDENDUM #7

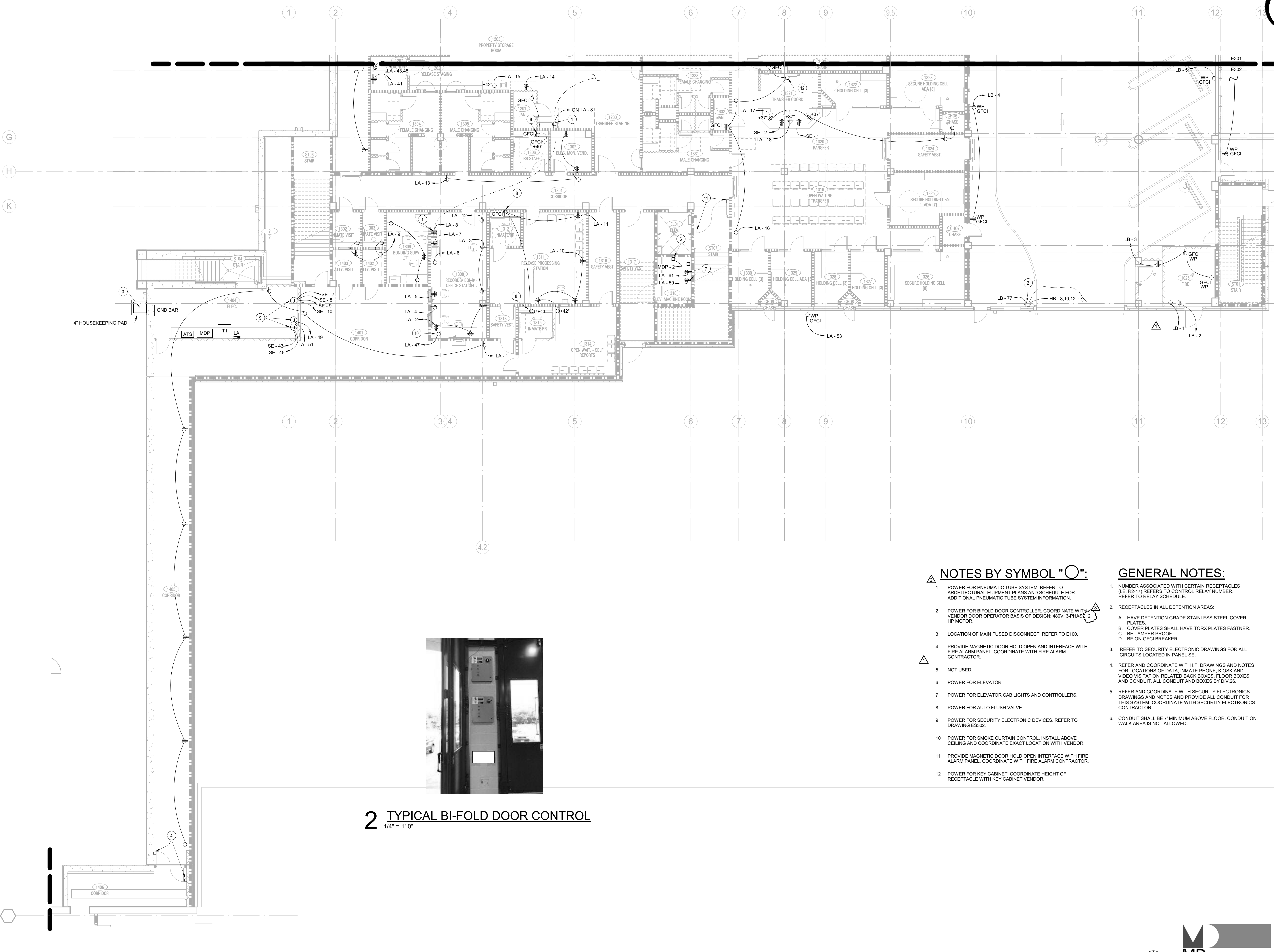


LOWER LEVEL EAST FLOOR PLAN - POWER



**1 LOWER LEVEL EAST FLOOR PLAN - POWER**  
1/8" = 1'-0"

**FOR BID**

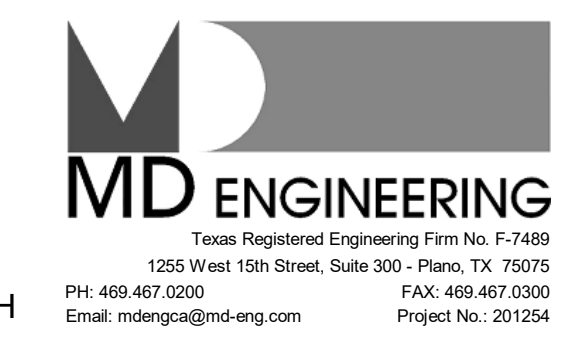
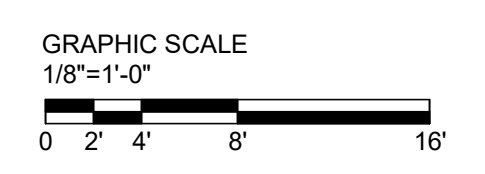


**2** TYPICAL BI-FOLD DOOR CONTROL  
1/4" = 1'-0"

- NOTES BY SYMBOL "O":**
- POWER FOR PNEUMATIC TUBE SYSTEM. REFER TO ARCHITECTURAL EQUIPMENT PLANS AND SCHEDULE FOR ADDITIONAL PNEUMATIC TUBE SYSTEM INFORMATION.
  - POWER FOR BIFOLD DOOR CONTROLLER. COORDINATE WITH VENDOR DOOR OPERATOR BASIS OF DESIGN: 480V, 3-PHASE, 2 HP MOTOR.
  - LOCATION OF MAIN FUSED DISCONNECT. REFER TO E100.
  - PROVIDE MAGNETIC DOOR HOLD OPEN AND INTERFACE WITH FIRE ALARM PANEL. COORDINATE WITH FIRE ALARM CONTRACTOR.
  - NOT USED.
  - POWER FOR ELEVATOR.
  - POWER FOR ELEVATOR CAB LIGHTS AND CONTROLLERS.
  - POWER FOR AUTO FLUSH VALVE.
  - POWER FOR SECURITY ELECTRONIC DEVICES. REFER TO DRAWING ES302.
  - POWER FOR SMOKE CURTAIN CONTROL. INSTALL ABOVE CEILING AND COORDINATE EXACT LOCATION WITH VENDOR.
  - PROVIDE MAGNETIC DOOR HOLD OPEN INTERFACE WITH FIRE ALARM PANEL. COORDINATE WITH FIRE ALARM CONTRACTOR.
  - POWER FOR KEY CABINET. COORDINATE HEIGHT OF RECEPTACLE WITH KEY CABINET VENDOR.

- GENERAL NOTES:**
- NUMBER ASSOCIATED WITH CERTAIN RECEPTACLES (IE: R2-17) REFERS TO CONTROL RELAY NUMBER. REFER TO RELAY SCHEDULE.
  - RECEPTACLES IN ALL DETENTION AREAS:
    - A. HAVE DETENTION GRADE STAINLESS STEEL COVER PLATES.
    - B. COVER PLATES SHALL HAVE TORX PLATES FASTNER.
    - C. BE TAMPER PROOF.
    - D. BE ON GFCI BREAKER.
  - REFER TO SECURITY ELECTRONIC DRAWINGS FOR ALL CIRCUITS LOCATED IN PANEL SE.
  - REFER AND COORDINATE WITH I.T. DRAWINGS AND NOTES FOR LOCATIONS OF DATA, INMATE PHONE, KIOSK AND VIDEO VISITATION RELATED BACK BOXES, FLOOR BOXES AND CONDUIT. ALL CONDUIT AND BOXES BY DIV.26.
  - REFER AND COORDINATE WITH SECURITY ELECTRONICS DRAWINGS AND NOTES AND PROVIDE ALL CONDUIT FOR THIS SYSTEM. COORDINATE WITH SECURITY ELECTRONICS CONTRACTOR.
  - CONDUIT SHALL BE 7" MINIMUM ABOVE FLOOR. CONDUIT ON WALK AREA IS NOT ALLOWED.

**1** LOWER LEVEL WEST FLOOR PLAN - POWER  
1/8" = 1'-0"



LOWER LEVEL WEST FLOOR PLAN - POWER



HISTORY		
#	DATE	DESCRIPTION
1	08/18/2021	ADDENDUM #2
2	08/31/2021	ADDENDUM #6
3	09/02/2021	ADDENDUM #7

**COLLIN COUNTY ADF - PHASE 1 ADDITION**

4300 COMMUNITY AVE, MCKINNEY, TX 75071

Architect: Brinkley Sargent Wighton Architects (972) 960-9970  
 Civil: Pacheco Koch (214) 451-2765  
 Structural: JQ Engineering (214) 752-9098  
 MEP / IT: MD Engineers (469) 467-0200  
 Security: Letitech (972) 633-8650

**BRINKLEY SARGENT WIGHTON ARCHITECTS**

**FOR BID**