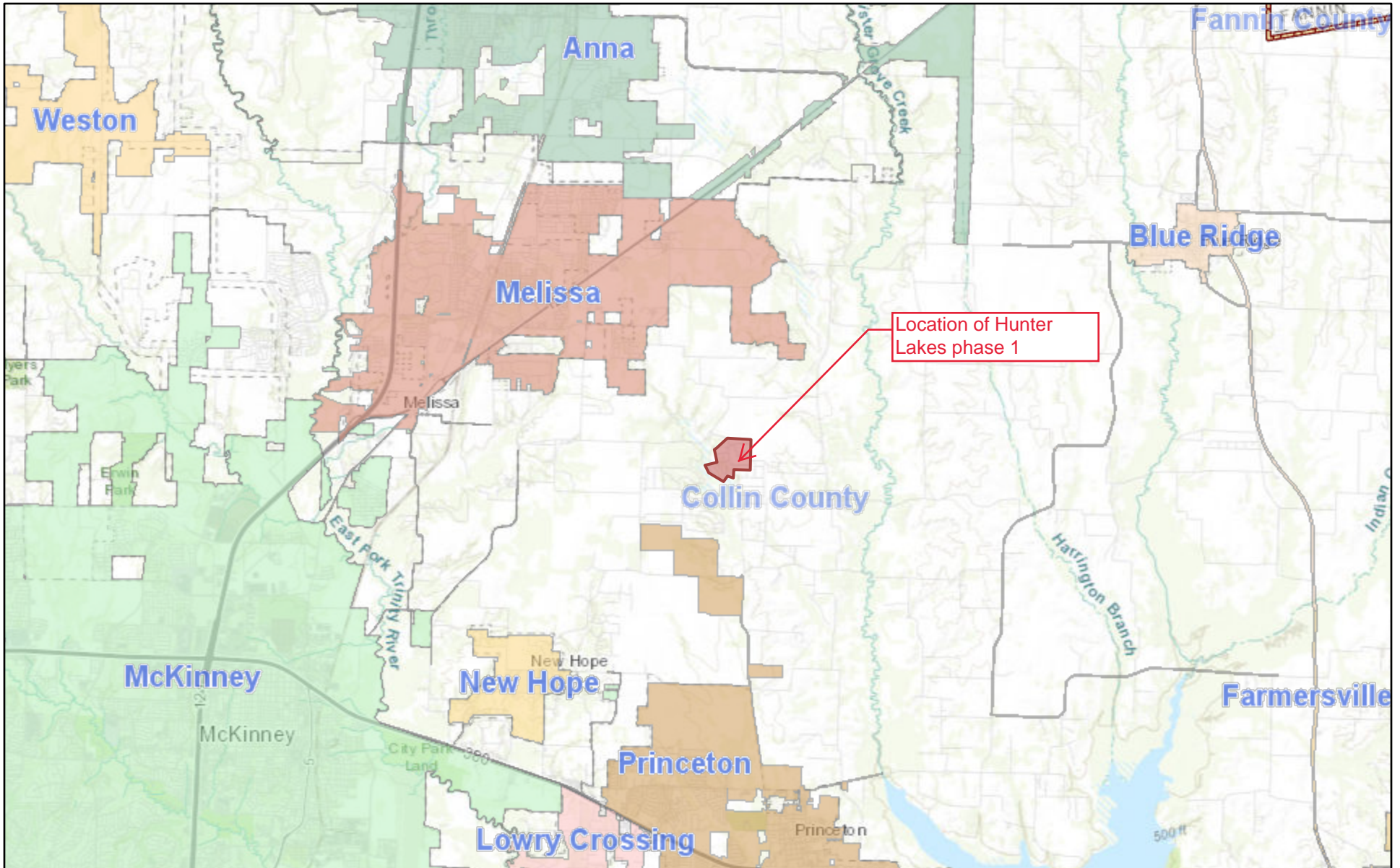


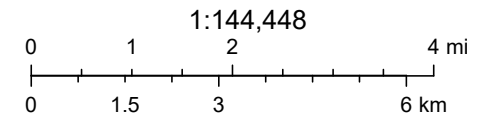
# HUNTER LAKES PHASE 1



9/20/2021, 1:11:18 PM

Hunter Lakes phase 1 is located off CR 469 approximately 5.13 miles north of Princeton

- City
- County



Sources: Esri, HERE, Garmin, Intermap, increment P Corp., GEBCO, USGS, FAO, NPS, NRCAN, GeoBase, IGN, Kadaster NL, Ordnance Survey, Esri

ArcGIS Web AppBuilder  
Texas Parks & Wildlife, Esri, HERE, Garmin, USGS, NGA, EPA, USDA, NPS | Gabriela, bmf |