

**LEGEND**

- Skewback to be Constructed by Developer.
- Shoulder Run Ramps to be Constructed by Developer.
- Construct Lay Down Curb



**PROPOSED ASPHALT PAVEMENT**  
N.T.S.

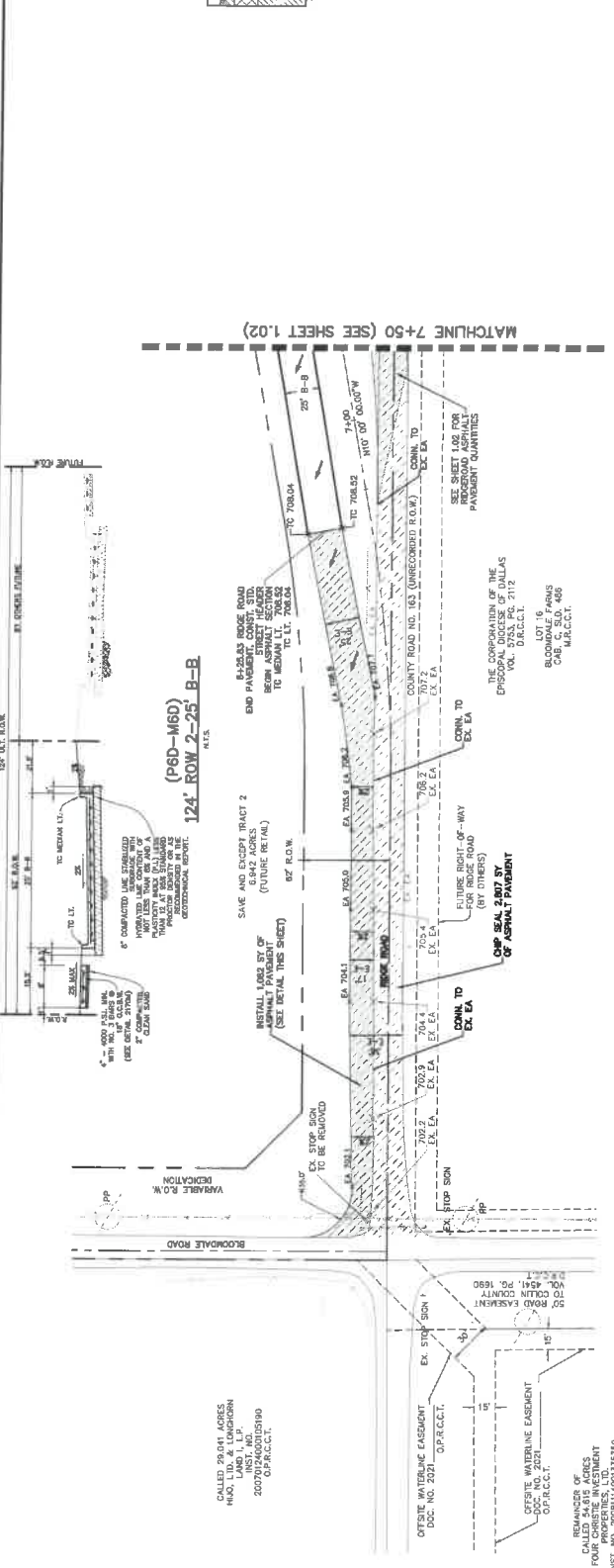


**RELEASED FOR CONSTRUCTION**  
CITY OF HOUSTON ENGINEERING DEPARTMENT  
SARAH J. ANDERSON, E.I.T.

Plan by reference to the City of Houston Engineering Department. The City of Houston Engineering Department is not responsible for any errors or omissions in this plan. The contractor shall be responsible for verifying all field data and conditions prior to construction.



**RELEASED FOR CONSTRUCTION**  
CITY OF HOUSTON ENGINEERING DEPARTMENT  
SARAH J. ANDERSON, E.I.T.



**RELEASED FOR CONSTRUCTION**  
CITY OF HOUSTON ENGINEERING DEPARTMENT  
SARAH J. ANDERSON, E.I.T.

**RELEASED FOR CONSTRUCTION**  
CITY OF HOUSTON ENGINEERING DEPARTMENT  
SARAH J. ANDERSON, E.I.T.

**RELEASED FOR CONSTRUCTION**  
CITY OF HOUSTON ENGINEERING DEPARTMENT  
SARAH J. ANDERSON, E.I.T.

**RELEASED FOR CONSTRUCTION**  
CITY OF HOUSTON ENGINEERING DEPARTMENT  
SARAH J. ANDERSON, E.I.T.

**RELEASED FOR CONSTRUCTION**  
CITY OF HOUSTON ENGINEERING DEPARTMENT  
SARAH J. ANDERSON, E.I.T.

**RELEASED FOR CONSTRUCTION**  
CITY OF HOUSTON ENGINEERING DEPARTMENT  
SARAH J. ANDERSON, E.I.T.

**RELEASED FOR CONSTRUCTION**  
CITY OF HOUSTON ENGINEERING DEPARTMENT  
SARAH J. ANDERSON, E.I.T.

**RELEASED FOR CONSTRUCTION**  
CITY OF HOUSTON ENGINEERING DEPARTMENT  
SARAH J. ANDERSON, E.I.T.

**RELEASED FOR CONSTRUCTION**  
CITY OF HOUSTON ENGINEERING DEPARTMENT  
SARAH J. ANDERSON, E.I.T.

**BEENCH-MARKS**  
2121 McKinney Road  
Suite 300  
Houston, Texas 77006  
972.248.7678  
TPE No. F-439  
TPEL No. 10076900

**JBI PARTNERS**  
2121 McKinney Road  
Suite 300  
Houston, Texas 77006  
972.248.7678  
TPE No. F-439  
TPEL No. 10076900

**RELEASED FOR CONSTRUCTION**  
CITY OF HOUSTON ENGINEERING DEPARTMENT  
SARAH J. ANDERSON, E.I.T.

**RELEASED FOR CONSTRUCTION**  
CITY OF HOUSTON ENGINEERING DEPARTMENT  
SARAH J. ANDERSON, E.I.T.

**RELEASED FOR CONSTRUCTION**  
CITY OF HOUSTON ENGINEERING DEPARTMENT  
SARAH J. ANDERSON, E.I.T.

**RELEASED FOR CONSTRUCTION**  
CITY OF HOUSTON ENGINEERING DEPARTMENT  
SARAH J. ANDERSON, E.I.T.

**RELEASED FOR CONSTRUCTION**  
CITY OF HOUSTON ENGINEERING DEPARTMENT  
SARAH J. ANDERSON, E.I.T.

**RELEASED FOR CONSTRUCTION**  
CITY OF HOUSTON ENGINEERING DEPARTMENT  
SARAH J. ANDERSON, E.I.T.

**RELEASED FOR CONSTRUCTION**  
CITY OF HOUSTON ENGINEERING DEPARTMENT  
SARAH J. ANDERSON, E.I.T.

**RELEASED FOR CONSTRUCTION**  
CITY OF HOUSTON ENGINEERING DEPARTMENT  
SARAH J. ANDERSON, E.I.T.

**RELEASED FOR CONSTRUCTION**  
CITY OF HOUSTON ENGINEERING DEPARTMENT  
SARAH J. ANDERSON, E.I.T.

**RELEASED FOR CONSTRUCTION**  
CITY OF HOUSTON ENGINEERING DEPARTMENT  
SARAH J. ANDERSON, E.I.T.

**RELEASED FOR CONSTRUCTION**  
CITY OF HOUSTON ENGINEERING DEPARTMENT  
SARAH J. ANDERSON, E.I.T.

**RELEASED FOR CONSTRUCTION**  
CITY OF HOUSTON ENGINEERING DEPARTMENT  
SARAH J. ANDERSON, E.I.T.

**RELEASED FOR CONSTRUCTION**  
CITY OF HOUSTON ENGINEERING DEPARTMENT  
SARAH J. ANDERSON, E.I.T.

**RELEASED FOR CONSTRUCTION**  
CITY OF HOUSTON ENGINEERING DEPARTMENT  
SARAH J. ANDERSON, E.I.T.

**RELEASED FOR CONSTRUCTION**  
CITY OF HOUSTON ENGINEERING DEPARTMENT  
SARAH J. ANDERSON, E.I.T.

**RELEASED FOR CONSTRUCTION**  
CITY OF HOUSTON ENGINEERING DEPARTMENT  
SARAH J. ANDERSON, E.I.T.

**RELEASED FOR CONSTRUCTION**  
CITY OF HOUSTON ENGINEERING DEPARTMENT  
SARAH J. ANDERSON, E.I.T.

**RELEASED FOR CONSTRUCTION**  
CITY OF HOUSTON ENGINEERING DEPARTMENT  
SARAH J. ANDERSON, E.I.T.

**RELEASED FOR CONSTRUCTION**  
CITY OF HOUSTON ENGINEERING DEPARTMENT  
SARAH J. ANDERSON, E.I.T.

**RELEASED FOR CONSTRUCTION**  
CITY OF HOUSTON ENGINEERING DEPARTMENT  
SARAH J. ANDERSON, E.I.T.

**RELEASED FOR CONSTRUCTION**  
CITY OF HOUSTON ENGINEERING DEPARTMENT  
SARAH J. ANDERSON, E.I.T.

**RELEASED FOR CONSTRUCTION**  
CITY OF HOUSTON ENGINEERING DEPARTMENT  
SARAH J. ANDERSON, E.I.T.

**RELEASED FOR CONSTRUCTION**  
CITY OF HOUSTON ENGINEERING DEPARTMENT  
SARAH J. ANDERSON, E.I.T.

**RELEASED FOR CONSTRUCTION**  
CITY OF HOUSTON ENGINEERING DEPARTMENT  
SARAH J. ANDERSON, E.I.T.

**RELEASED FOR CONSTRUCTION**  
CITY OF HOUSTON ENGINEERING DEPARTMENT  
SARAH J. ANDERSON, E.I.T.

**RELEASED FOR CONSTRUCTION**  
CITY OF HOUSTON ENGINEERING DEPARTMENT  
SARAH J. ANDERSON, E.I.T.

**RELEASED FOR CONSTRUCTION**  
CITY OF HOUSTON ENGINEERING DEPARTMENT  
SARAH J. ANDERSON, E.I.T.

**RELEASED FOR CONSTRUCTION**  
CITY OF HOUSTON ENGINEERING DEPARTMENT  
SARAH J. ANDERSON, E.I.T.

**RELEASED FOR CONSTRUCTION**  
CITY OF HOUSTON ENGINEERING DEPARTMENT  
SARAH J. ANDERSON, E.I.T.

**RELEASED FOR CONSTRUCTION**  
CITY OF HOUSTON ENGINEERING DEPARTMENT  
SARAH J. ANDERSON, E.I.T.

**RELEASED FOR CONSTRUCTION**  
CITY OF HOUSTON ENGINEERING DEPARTMENT  
SARAH J. ANDERSON, E.I.T.

**RELEASED FOR CONSTRUCTION**  
CITY OF HOUSTON ENGINEERING DEPARTMENT  
SARAH J. ANDERSON, E.I.T.

**RELEASED FOR CONSTRUCTION**  
CITY OF HOUSTON ENGINEERING DEPARTMENT  
SARAH J. ANDERSON, E.I.T.

**RELEASED FOR CONSTRUCTION**  
CITY OF HOUSTON ENGINEERING DEPARTMENT  
SARAH J. ANDERSON, E.I.T.

**RELEASED FOR CONSTRUCTION**  
CITY OF HOUSTON ENGINEERING DEPARTMENT  
SARAH J. ANDERSON, E.I.T.

**RELEASED FOR CONSTRUCTION**  
CITY OF HOUSTON ENGINEERING DEPARTMENT  
SARAH J. ANDERSON, E.I.T.





