



1999 Bryan Street, Suite 1200
 Dallas, Texas 75201
 United States
 T +1.214.638.0145
 F +1.214.638.0447
 www.jacobs.com

October 11, 2021

Attention: Bridell Miers, PE

Collin County Engineering Department
 4690 Community Ave, Suite 200
 McKinney, TX 75071

Project Name: Collin County Outer Loop Access Road-DNT to SH 289

Project Number: 659333CH

Subject: Change Order No. 3

Dear Ms. Miers,

Jacobs recommends the following Change Order #3 modifications of the Outer Loop Access Road project.

1. South Median Nose at Preston

BID ITEM	DESC	S.P. CODE	ITEM DESCRIPTION	PREVIOUS QUANTITY	REVISION	REVISED QUANTITY	UNIT	CONTRACT CHANGE	
								UNIT COST	SUBTOTAL COST
536	6005		CONCRETE MEDIAN (NOSE)	-	1.00	1.00	EA	17,926.43	\$ 17,926.43
NET INCREASE/(DECREASE) SUBGRADE REVISION									\$17,926.43

This change was based on request by the City of Celina to change the median nose to a laydown nose to reflect the city's standards. Revised sheet 2, EQ3, 21A, 130, 142 and 148A should be issued with change order #3.

2. Stop Signs

BID ITEM	DESC	S.P. CODE	ITEM DESCRIPTION	PREVIOUS QUANTITY	REVISION	REVISED QUANTITY	UNIT	CONTRACT CHANGE	
								UNIT COST	SUBTOTAL COST
636	6001		ALUMINUM SIGNS (TY A)	-	4.00	4.00	EA	176.68	\$ 706.72
NET INCREASE/(DECREASE) SUBGRADE REVISION									\$706.72

This change was based on request by the City of Celina to change the stop signs the T-intersections. Revised sheet EQ3, 25,30, 330, 333, 337, and 338 should be issued with change order #3.

The net increase/(decrease) to the Outer Loop Access Road project cost by this Change Order is \$18,633.15.



Attention: Bridell Miers, PE
Subject: Change Order No. 3

Should you have any questions or require additional information, do not hesitate to contact me.

Yours sincerely

A handwritten signature in blue ink, appearing to read "Jesus Gonzalez".

Jesus Gonzalez, PE
Project Manager
469-941-8890
jesus.gonzalez10@jacobs.com

<>,*,#,@,+,%,** THE STANDARD SHEETS SPECIFICALLY IDENTIFIED ABOVE HAVE BEEN SELECTED BY ME OR UNDER MY RESPONSIBLE SUPERVISION AS BEING APPLICABLE TO THIS PROJECT.

PE DATE 9/28/2021

SHEET NO DESCRIPTION

GENERAL

- 1 TITLE SHEET
2 INDEX OF SHEETS
3 PROJECT LAYOUT
4 - 5 EXISTING TYPICAL SECTIONS
6 - 17 PROPOSED TYPICAL SECTIONS
EQ1 - EQ3 ESTIMATES AND QUANTITIES
18 - 29, 21A SUMMARY SHEETS
30 - 31 SUMMARY OF SMALL SIGNS

TRAFFIC CONTROL

- 32 TRAFFIC CONTROL PLAN GENERAL NOTES
33 TRAFFIC CONTROL PLAN ADVANCED WARNING
34 - 36 TRAFFIC CONTROL PLAN PHASE 1A
37 - 49 TRAFFIC CONTROL PLAN PHASE 1B
50 - 54 TRAFFIC CONTROL PLAN PHASE 2A
55 - 66 TRAFFIC CONTROL PLAN PHASE 2B
67 - 69 SIGNAL LAYOUT PRESTON RD (SH 289)

TRAFFIC CONTROL STANDARDS

- 70 - 81 <> BC(1)-14 THRU BC(12)-14
82 - 84 <> TCP(2-1)-18 THRU TCP(2-3)-18
85 - 86 <> WZ(BTS-1)-13
87 <> WZ(RCD)-13
88 <> WZ(STPM)-13
89 <> WZ(TD)-17
90 - 91 <> LPCB-13
92 <> TREATMENT FOR VARIOUS EDGE CONDITIONS
93 - 95 * SPAN WIRE MOUNTED TRAFFIC SIGNALS
95A * TCP(2-4)-18

ROADWAY

- 96 - 101 ACCESS ROAD REMOVAL PLAN
102 - 105 SURVEY CONTROL POINTS
106 - 108 HORIZONTAL ALIGNMENT DATA
109 ROADWAY BORING LOGS
110 - 119 ACCESS ROAD PLAN & PROFILE
120 - 123 EASTBOUND MAINLANES PLAN & PROFILE
124 DALLAS PARKWAY NBFR PLAN
125 CR 52 PLAN & PROFILE
126 CR 51 PLAN & PROFILE
127 - 129 WESTBOUND CONNECTOR PLAN & PROFILE
130 - 131 PRESTON RD (SH 289) PLAN
132 DALLAS PARKWAY INTERSECTION LAYOUT
133 CR 52 INTERSECTION LAYOUT
134 CR 51 INTERSECTION LAYOUT
135 - 136 WB-CONECTOR INTERSECTION LAYOUT
137 PRESTON RD (SH 289) INTERSECTION LAYOUT
138 CR 88 INTERSECTION LAYOUT
139 DRIVEWAY LAYOUT
140 DRIVEWAY DETAILS
141 - 142 MISCELLANEOUS ROADWAY DETAILS
143 CRASH CUSHION SUMMARY SHEET
143A CITY OF CELINA STREET
DETAILS 10 STANDARD DETAILS

ROADWAY STANDARDS

- 144 - 145 * CRCP(1)-17
146 - 147 * CPCD(1)-14
148 * CCCG-12
149 * JS-14
150 - 151 * SSCB(2)-10
152 * QUAD(N)-17
153 * TAU-II(N)-16
154 * TRACC(N)-16
155 * GF(31)-14
156 * GF(31)TR-14
157 * GF(31)MS-17
158 * BED-14
159 * SGT(10S)31-16
160 * SGT(11S)31-18
161 * SGT(12S)31-18
162 - 165 * PED-18

SHEET NO DESCRIPTION

RETAINING WALL

- 166 RETAINING WALL BORING LOGS
167 RETAINING WALL HORIZONTAL ALIGNMENT DATA
168 - 169 RETAINING WALL PLAN & PROFILE
170 RETAINING WALL TYPICAL SECTION
171 RETAINING WALL SAFETY MAINTENANCE RAIL

RETAINING WALL STANDARDS

- 172 # RW(MSE)DD
173 # RW(EM)
174 - 175 # RW(MSE)
176 # RW(TRF)

DRAINAGE

- 177 OVERALL DRAINAGE AREA MAP
178 - 185 ACCESS ROAD DRAINAGE AREA MAP
186 RUNOFF COMPUTATIONS
187 INLET COMPUTATIONS
188 STORM SEWER COMPUTATIONS
189 CULVERT A HYDRAULIC DATA
190 CULVERT B HYDRAULIC DATA
191 - 196 ACCESS ROAD DRAINAGE PLAN
197 - 198 WESTBOUND CONNECTOR DRAINAGE PLAN
199 - 204 ACCESS ROAD STORM SEWER PROFILES
205 CULVERT LAYOUT CULVERT A
206 CULVERT LAYOUT CULVERT B
207 - 213 ACCESS ROAD DITCH LAYOUT
214 - 216 DOE BRANCH HYDRAULIC DATA
217 DOE BRANCH CREEK GRADING LAYOUT
218 DOE BRANCH CREEK ALIGNMENT DATA
219 DOE BRANCH CREEK TYPICAL SECTION
220 - 222 MISCELLANEOUS DRAINAGE DETAILS

DRAINAGE STANDARDS

- 223 @ BCS
224 @ SCP-8
225 - 226 @ MC-7-10
227 - 228 @ MC-8-13
229 @ SCC-MD
230 @ MC-MD
231 @ FW-0
232 @ FW-S
233 @ PW
234 @ ECD
235 - 236 @ SETP-CD
237 @ SETP-PD
238 @ PSET-SP
239 @ PSET-SC
240 @ PB
241 @ PDD
242 @ PRM
243 - 244 @ PCO
245 - 246 @ PSL
247 @ PAZD
248 @ CGT-PCO
249 - 250 @ RGI(TY II)-08 DALLAS DISTRICT STANDARD

BRIDGE

- 251 - 253 EBFR BRIDGE AT DOE BRANCH BEGIN TO STA 2045+00
254 EBFR BRIDGE AT DOE BRANCH TYPICAL SECTIONS
255 EBFR BRIDGE AT DOE BRANCH ESTIMATED QUANTITIES
256 EBFR BRIDGE AT DOE BRANCH CONTROL ELEVATIONS
257 - 258 EBFR BRIDGE AT DOE BRANCH BORING LOGS
259 - 260 EBFR BRIDGE AT DOE BRANCH ABUTMENT 1 DETAILS
261 - 262 EBFR BRIDGE AT DOE BRANCH ABUTMENT 9 DETAILS
263 - 264 EBFR BRIDGE AT DOE BRANCH BENT 2 DETAILS
265 EBFR BRIDGE AT DOE BRANCH BEAM LAYOUT - UNIT 1
266 - 267 EBFR BRIDGE AT DOE BRANCH SPAN DETAILS - UNIT 1
268 EBFR BRIDGE AT DOE BRANCH BEAM LAYOUT - UNIT 2
269 - 270 EBFR BRIDGE AT DOE BRANCH SPAN DETAILS - UNIT 2
271 EBFR BRIDGE AT DOE BRANCH BEAM LAYOUT - UNIT 3
272 - 273 EBFR BRIDGE AT DOE BRANCH SPAN DETAILS - UNIT 3
274 EBFR BRIDGE AT DOE BRANCH BEAM DESIGN
275 - 276 EBFR OVERPASS AT BNSF BEGIN TO STA 2065+10
277 EBFR OVERPASS AT BNSF TYPICAL SECTIONS
278 EBFR OVERPASS AT BNSF ESTIMATED QUANTITIES
279 EBFR OVERPASS AT BNSF CONTROL ELEVATIONS
280 - 281 EBFR OVERPASS AT BNSF BORING LOGS
282 - 283 EBFR OVERPASS AT BNSF ABUTMENT 1 DETAILS
284 - 285 EBFR OVERPASS AT BNSF ABUTMENT 6 DETAILS
286 EBFR OVERPASS AT BNSF BENT 2 AND 5 DETAILS
287 EBFR OVERPASS AT BNSF BENTS 3 AND 4 DETAILS
287A EBML BRIDGE BNSF OVERPASS BEAM LAYOUT - UNIT 1
288 EBML BRIDGE BNSF OVERPASS SPAN DETAILS - UNIT 1
289 EBML BRIDGE BNSF OVERPASS SPAN DETAILS - UNIT 1
289A EBML BRIDGE BNSF OVERPASS SPAN DETAILS - UNIT 1

SHEET NO DESCRIPTION

BRIDGE (cont.)

- 290 - 291 EBML BRIDGE BNSF OVERPASS SPAN DETAILS - UNIT 2
292 EBML BRIDGE BNSF OVERPASS BEAM DESIGN

BRIDGE STANDARDS

- 293 + BAS-C
294 - 295 + CLF-RO
296 + CRR
297 + CSAB
298 - 299 + FD
300 + IGCS
301 - 302 + IGD
303 - 305 + IGEB
306 - 307 + IGMS
308 + IGTS
309 - 310 + MEBR-C
311 - 314 + PCP
315 + PCP-FAB
316 - 317 + SEJ-A
318 - 319 + SRR
320 - 321 + TYPE SSTR

TRAFFIC ITEMS

- 322 - 326 SIGNAL LAYOUT PRESTON RD (SH 289)
327 - 329 OUTER LOOP ROW SIGNING PLAN
330 - 343 SIGNING & PAVEMENT MARKINGS

TRAFFIC STANDARDS

- 344 - 351 % ED(1)-14
352 - 353 % SMA-80(1)-12 (DAL) & SMA-80(2)-12 (DAL)
354 % MA-C-12
355 % MA-D-12 (DAL)
356 % TS-FD-12
357 % LUM-A-12
358 % CFA-12
359 % MA-DPD-12
360 % PEDESTRIAN SIGNAL HEAD DETAIL (DAL)
361 % TRAFFIC SIGNAL HEAD DETAILS (DAL)
362 - 366 ** D&OM(1,2)-15, D&OM(3)-15B, D&OM(4,5)-15
367 ** D&OM(VIA)-15
368 - 370 ** PM(1)-12 THRU PM(3)-12
371 ** SMD(GEN)-08
372 - 374 ** SMD(SLIP-1)-08 THRU SMD(SLIP-3)-08
375 - 376 ** TSR(4)-13
377 % RADAR VEHICLE DETECTION SYSTEM RVSD-18
378 - 380 % INSTALLATION OF BBU/EVP
380A % SNS-95

ENVIRONMENTAL ITEMS

- 381 STORM WATER POLLUTION PREVENTION (SW3P) (DAL)
382 ENVIRONMENTAL PERMITS, ISSUES, AND COMMITMENTS
383 - 396 SW3P PLAN ACCESS ROAD

ENVIRONMENTAL STANDARDS

- 397 - 399 <> EC(1)-16 THRU EC(3)-16
400 - 402 <> EC(9)-16-1
403 <> VEGETATION ESTABLISHMENT SHEET

BNSF "EXHIBIT A"

- 404 EXHIBIT TITLE
405 - 416 EXHIBIT "A" BNSF OVERPASS



9/28/2021

Revision table with columns: No., DATE, REVISION, APPROV. Includes entries for sheets EQ3, 21A, 143A and 95A.

COLLIN COUNTY OUTER LOOP



INDEX OF SHEETS

SHEET 1 OF 1



BOND PROJECT NO. 07-094 SHEET 2

USER\$

9/27/2021 4:15:22 PM \\denpwp01\dfs\p\eswor\king\330826\342063_2\CCOL_INDEX.dgn

9/27/2021 4:15:22 PM \\denpwp01\dfs\p\eswor\king\330826\342063_2\CCOL_INDEX.dgn

NO.	REV.	BID ITEM	DESC	S. P. CODE	ITEM DESCRIPTION	UNIT	ESTIMATED QUANTITY	FINAL QUANTITY
188		536	6005		CONCRETE MEDIAN (NOSE)	EA	1	
189		636	6001		ALUMINUM SIGNS (TY A)	EA	4	

\$USER\$

10/8/2021 11:03:58 AM
 \\denipw01\dfs\pwork\king\335678\342114_16\CCOL-E003.dgn



NO.	DATE	REVISION	APPROV.
1	10/08/21	ADDED ITEM 536 & 644	JG

COLLIN COUNTY OUTER LOOP



**ESTIMATE &
QUANTITIES**

SHEET 2A OF 2A



BOND PROJECT NO. 07-094 SHEET EQ3

10/8/2021 11:03:58 AM \\denipw01\dfs\pwork\king\335678\342114_16\CCOL-E003.dgn

\$USER\$

9/27/2021 12:53:00 PM
\\denipw01\dfs\pwork\king\30686\342114_17\CCOL_SUM04A.dgn

SUMMARY OF ROADWAY ITEMS	
LOCATION	
	536
	6005
	CONCRETE MEDIAN NOSE)
	EA
CCOL	
SHEET 1 OF 10	
SHEET 2 OF 10	
SHEET 3 OF 10	
SHEET 4 OF 10	
SHEET 5 OF 10	
SHEET 6 OF 10	
SHEET 7 OF 10	
SHEET 8 OF 10	
SHEET 9 OF 10	
SHEET 10 OF 10	
DNT	
SHEET 1 OF 1	
CR 52	
SHEET 1 OF 1	
CR 51	
SHEET 1 OF 1	
WB CONNECTOR	
SHEET 1 OF 3	
SHEET 2 OF 3	
SHEET 3 OF 3	
SH 289 (PRESTON)	
SHEET 1 OF 2	
SHEET 2 OF 2	1
PROJECT TOTALS	
	1



No.	DATE	REVISION	APPROV.
1	09/28/21	ADDED ITEM 536	JG

COLLIN COUNTY OUTER LOOP



SUMMARY
SHEETS
ROADWAY

SHEET 4A OF 12



FIRM REGISTRATION: F-2966

BOND PROJECT NO. 07-094 SHEET 21A



9/27/2021 12:53:00 PM \\denipw01\dfs\pwork\king\30686\342114_17\CCOL_SUM04A.dgn

\$USER\$

10/11/2021 1:30:22 PM \\denbwp01\dfs\pwi\cswork\king\936346\342127_45\CCOL_SUM08.dgn

PLAN SHEET NO.	STATION TO STATION	0644 6001	0644 6004	0644 6007	0644 6017	0644 6064	0658 6014	0658 6015	0658 6048	0666 6030	0666 6036	0666 6042	0666 6048	0666 6054	0666 6078	0666 6102	0666 6141	0666 6224	0636 6001
		IN SM RD SN SUP&AM TY10BWG (1) SA (P)	IN SM RD SN SUP&AM TY10BWG (1) SA (T)	IN SM RD SN SUP&AM TY10BWG (1) SA (U)	IN SM RD SN SUP&AM TY10BWG (2) SA (P)	IN BRIDGE MNT CLEARANCE SGN ASSM(TY N)	INSTR DEL ASSM (D-SW) SZ (BR) CTB (BI)	INSTR DEL ASSM (D-SW) SZ (BR) GF1	INSTR OM ASSM (OM-2Z) (F LX) GND	REFL PAV MRK TY I (W) 8" (DOT) (100MIL)	REFL PAV MRK TY I (W) 8" (SLD) (100MIL)	REFL PAV MRK TY I (W) 12" (SLD) (100MIL)	REFL PAV MRK TY I (W) 24" (SLD) (100MIL)	REFL PAV MRK TY I (W) (ARROW) (100MIL)	REFL PAV MRK TY I (W) (WORD) (100MIL)	REF PAV MRK TY I (W) 36" (YLD TRI) (100MIL)	REFL PAV MRK TY I (Y) 12" (SLD) (100MIL)	PAVEMENT SEALER 4"	ALUMINUM SIGNS (TY A)
COLLIN COUNTY OUTER LOOP RD																			
1 OF 14	BEGIN TO STA 1007+00	6	1					1	4	470	1385		181	8	8	6	568	5862	2
2 OF 14	STA 1007+00 TO STA 1018+00	4						17	2	150	129			1	2		100	4959	
3 OF 14	STA 1018+00 TO STA 1029+00									150	272			3	2		250	5192	
4 OF 14	STA 1029+00 TO STA 1040+00	2							1				27					4643	
5 OF 14	STA 1040+00 TO STA 1051+00	1					34	5	1									4400	
6 OF 14	STA 1051+00 TO STA 1062+00	2					20	10	2									4400	
7 OF 14	STA 1062+00 TO STA 1073+00	3	1			2	23	13	2				49					6536	
8 OF 14	STA 1073+00 TO STA 1084+00	5								101	438		24	2	2		189	5554	1
9 OF 14	STA 1084+00 TO STA 1095+00	8	2	2						396	1890	809	234	13	12	12	185	5812	1
10 OF 14	STA 1095+00 TO END	1								20							35	1378	
WESTBOUND CONNECTOR																			
11 OF 14	STA 1067+00 TO STA 1075+00	1																3201	
12 OF 14	STA 1075+00 TO STA 1085+00	1																4001	
PRESTON RD																			
13 OF 14	BEGIN TO STA 416+00	1			1					200	209			1	1			411	
14 OF 14	STA 423+00 TO END				1					78								79	
OUTER LOOP ROW SIGNING PLAN																			
1 OF 3	BEGIN TO STA 1021+00	12																	
2 OF 3	STA 1021+00 TO STA 1065+00	24																	
3 OF 3	STA 1065+00 TO END	12																	
TOTALS		83	4	2	2	2	77	46	12	1565	4323	809	515	28	27	18	1327	56428	4

PLAN SHEET NO.	STATION TO STATION	0666 6226	0666 6228	0666 6230	0666 6231	0666 6232	0666 6243	0666 6303	0666 6315	0672 6007	0672 6009	0672 6010
		PAVEMENT SEALER 8"	PAVEMENT SEALER 12"	PAVEMENT SEALER 24"	PAVEMENT SEALER (ARROW)	PAVEMENT SEALER (WORD)	PAVEMENT SEALER (YLD TRI)	RE PM W/RET REQ TY I (W) 4" (SLD) (100MIL)	RE PM W/RET REQ TY I (Y) 4" (SLD) (100MIL)	REFL PAV MRKR TY I-C	REFL PAV MRKR TY II-A-A	REFL PAV MRKR TY II-C-R
COLLIN COUNTY OUTER LOOP RD												
1 OF 14	BEGIN TO STA 1007+00	1855	568	181	8	8	6	1890	3972	76	58	12
2 OF 14	STA 1007+00 TO STA 1018+00	279	100		1	2		2201	2758	6	43	
3 OF 14	STA 1018+00 TO STA 1029+00	422	250		3	2		2104	3088	14	65	
4 OF 14	STA 1029+00 TO STA 1040+00			27				2241	2402		30	
5 OF 14	STA 1040+00 TO STA 1051+00							2200	2200		28	
6 OF 14	STA 1051+00 TO STA 1062+00							2200	2200		28	
7 OF 14	STA 1062+00 TO STA 1073+00			49				3268	3268		41	
8 OF 14	STA 1073+00 TO STA 1084+00	539	189	24	2	2		2200	3354	22	73	
9 OF 14	STA 1084+00 TO STA 1095+00	2286	994	234	13	12	12	3088	2724	58	51	29
10 OF 14	STA 1095+00 TO END	20	35					536	842		11	
WESTBOUND CONNECTOR												
11 OF 14	STA 1067+00 TO STA 1075+00							1601	1600		22	
12 OF 14	STA 1075+00 TO STA 1085+00							2001	2000		25	
PRESTON RD												
13 OF 14	BEGIN TO STA 416+00	409			1	1		411				10
14 OF 14	STA 423+00 TO END	78						79				
OUTER LOOP ROW SIGNING PLAN												
1 OF 3	BEGIN TO STA 1021+00											
2 OF 3	STA 1021+00 TO STA 1065+00											
3 OF 3	STA 1065+00 TO END											
TOTALS		5888	2136	515	28	27	18	26020	30408	176	474	51

10/07/21			STOP SIGNS REVISIONS			JC		
No.	DATE	REVISION				APPROV.		
COLLIN COUNTY OUTER LOOP								
								
SUMMARY SHEETS SIGNING AND PAVEMENT MARKINGS								
SHEET 8 OF 12								
								
<small>BCE & G. Engineers, Inc. 2595 Dallas Parkway, Suite 204, Frisco, TX 75034 Tel: 972-464-4800 • www.bceg.com TSP# Registration No. F-1046</small>								
BOND PROJECT NO. 07-094						SHEET 25		

DISCLAIMER: The use of this standard is governed by the "Texas Engineering Practice Act". No warranty of any kind is made by TxDOT for any purpose whatsoever. TxDOT assumes no responsibility for the conversion of this standard to other formats or for incorrect results or damages resulting from its use.

DATE:
FILE:

SUMMARY OF SMALL SIGNS

PLAN SHEET NO.	SIGN NO.	SIGN NOMENCLATURE	SIGN TEXT	DIMENSIONS	ALUMINUM TYPE A	ALUMINUM TYPE G	Post Type	Posts (1 or 2)	Anchor Type	Mounting Designation	BRIDGE MOUNT CLEARANCE SIGNS (See Note 2)
1	R1-1	STOP	STOP	36X36	✓		10BWG	1	SA	P	
2	W4-4P	CROSS TRAFFIC DOES NOT STOP	CROSS TRAFFIC DOES NOT STOP	24X12	✓		10BWG	1	SA	T	
	W1-7	TWO-WAY LARGE ARROW	TWO-WAY LARGE ARROW	48X24	✓		10BWG	1	SA	T	
3	W2-2L	T INTERSECTION AHEAD	T INTERSECTION AHEAD	30X30	✓		10BWG	1	SA	P	
4	R3-8b	ADV. INTERSECTION LANE CONTROL	ADV. INTERSECTION LANE CONTROL	48X30	✓		10BWG	1	SA	P	
5	R1-2	YIELD	YIELD	48X48X48	✓		10BWG	1	SA	P	
6	R3-8a	ADV. INTERSECTION LANE CONTROL	ADV. INTERSECTION LANE CONTROL	48X30	✓		10BWG	1	SA	P	
7	R1-1	STOP	STOP	36X36	✓		10BWG	1	SA	P	
2	W4-4P	CROSS TRAFFIC DOES NOT STOP	CROSS TRAFFIC DOES NOT STOP	24X12	✓		10BWG	1	SA	P	
	R2-1	SPEED LIMIT XX	SPEED LIMIT XX	30X36	✓		10BWG	1	SA	P	
2	W2-2R	T INTERSECTION AHEAD	T INTERSECTION AHEAD	30X30	✓		10BWG	1	SA	P	
3	W2-2R	T INTERSECTION AHEAD	T INTERSECTION AHEAD	30X30	✓		10BWG	1	SA	P	
4	R3-5R	RIGHT ONLY	RIGHT ONLY	30X36	✓		10BWG	1	SA	P	
	R3-5FP	RIGHT LANE	RIGHT LANE	30X12	✓						
4	R1-1	STOP	STOP	36X36	✓		10BWG	1	SA	P	
2	W4-4P	CROSS TRAFFIC DOES NOT STOP	CROSS TRAFFIC DOES NOT STOP	24X12	✓		10BWG	1	SA	P	
	R1-1	STOP	STOP	36X36	✓		10BWG	1	SA	P	
5	W8-13aT	BRIDGE MAY ICE IN COLD WEATHER	BRIDGE MAY ICE IN COLD WEATHER	36X36	✓		10BWG	1	SA	P	
6	W8-13aT	BRIDGE MAY ICE IN COLD WEATHER	BRIDGE MAY ICE IN COLD WEATHER	36X36	✓		10BWG	1	SA	P	
2	W8-13aT	BRIDGE MAY ICE IN COLD WEATHER	BRIDGE MAY ICE IN COLD WEATHER	36X36	✓		10BWG	1	SA	P	
7	W1-1R	RIGHT TURN AHEAD	RIGHT TURN AHEAD	36X36	✓		10BWG	1	SA	P	
2	R1-1	STOP	STOP	36X36	✓		10BWG	1	SA	P	
3	W1-7	TWO-WAY LARGE ARROW	TWO-WAY LARGE ARROW	48X24	✓		10BWG	1	SA	T	
4	W8-13aT	BRIDGE MAY ICE IN COLD WEATHER	BRIDGE MAY ICE IN COLD WEATHER	36X36	✓		10BWG	1	SA	P	
5	W12-2a	XX FT X IN	XX FT X IN	84X24	✓						TY N
6	W12-2a	XX FT X IN	XX FT X IN	84X24	✓						TY N
8	W2-2L	T INTERSECTION AHEAD	T INTERSECTION AHEAD	30X30	✓		10BWG	1	SA	P	
2	R3-8LS	ADV. INTERSECTION LANE CONTROL	ADV. INTERSECTION LANE CONTROL	36X30	✓		10BWG	1	SA	P	
3	R2-1	SPEED LIMIT XX	SPEED LIMIT XX	30X36	✓		10BWG	1	SA	P	
4	R1-1	STOP	STOP	36X36	✓		10BWG	1	SA	P	
	W4-4P	CROSS TRAFFIC DOES NOT STOP	CROSS TRAFFIC DOES NOT STOP	24X12	✓		10BWG	1	SA	P	
6	W3-3	SIGNAL AHEAD	SIGNAL AHEAD	30X30	✓		10BWG	1	SA	P	
9	W1-7	TWO-WAY LARGE ARROW	TWO-WAY LARGE ARROW	48X24	✓		10BWG	1	SA	T	
3	R3-8b	ADV. INTERSECTION LANE CONTROL	ADV. INTERSECTION LANE CONTROL	48X30	✓		10BWG	1	SA	P	
5	M3-3	SOUTH	SOUTH	24X12	✓						
	M1-6T-3	289 TEXAS	289 TEXAS	24X24	✓						
	M6-1L	LEFT ARROW	LEFT ARROW	21X15	✓						
	M3-1	NORTH	NORTH	24X12	✓						
	M1-6T-3	289 TEXAS	289 TEXAS	24X24	✓						
	M6-1R	RIGHT ARROW	RIGHT ARROW	21X15	✓						
6	M3-1	NORTH	NORTH	24X12	✓						
	M1-6T-3	289 TEXAS	289 TEXAS	24X24	✓						
	M6-1L	LEFT ARROW	LEFT ARROW	21X15	✓						
	M3-3	SOUTH	SOUTH	24X12	✓						

ALUMINUM SIGN BLANKS (TYPE A)
Square Ft. Min. Thickness
Less than 7.5 0.080"
7.5 to 15 0.100"
Greater than 15 0.125"

NOTES:

- Sign supports shall be located as shown on the plans, except that the Engineer may shift the sign supports, within design guidelines, where necessary to secure a more desirable location or to avoid conflict with utilities. Unless otherwise shown on the plans, the Contractor shall stake and the Engineer will verify all sign support locations.
- For installation of bridge mount clearance signs, see Bridge Mounted Clearance Sign Assembly (BMCS) Standard Sheet.

NO.	DATE	REVISION	APPROV.
Δ	10/7/21	STOP SIGNS REVISION	JG

SHEET 1 OF 2

SUMMARY OF SMALL SIGNS SOSS

© TxDOT May 1987			
REV.	DATE	REVISIONS	
1	11-93	7-02	
2	8-95	2-07	
3	1-02	9-08	
CONT.	SECT.	JOB	HIGHWAY
DIST.	COUNTY	SHEET NO.	
		30	

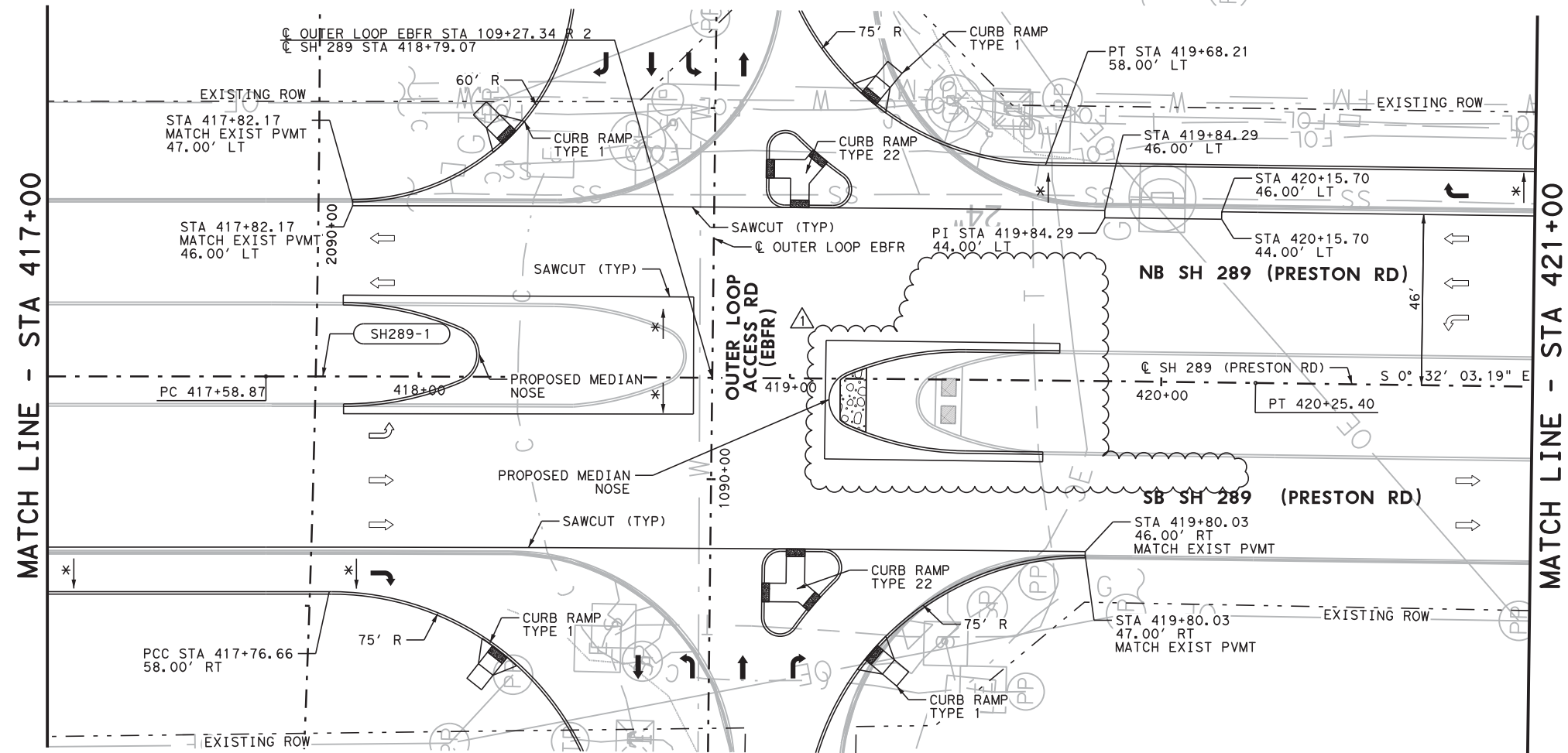
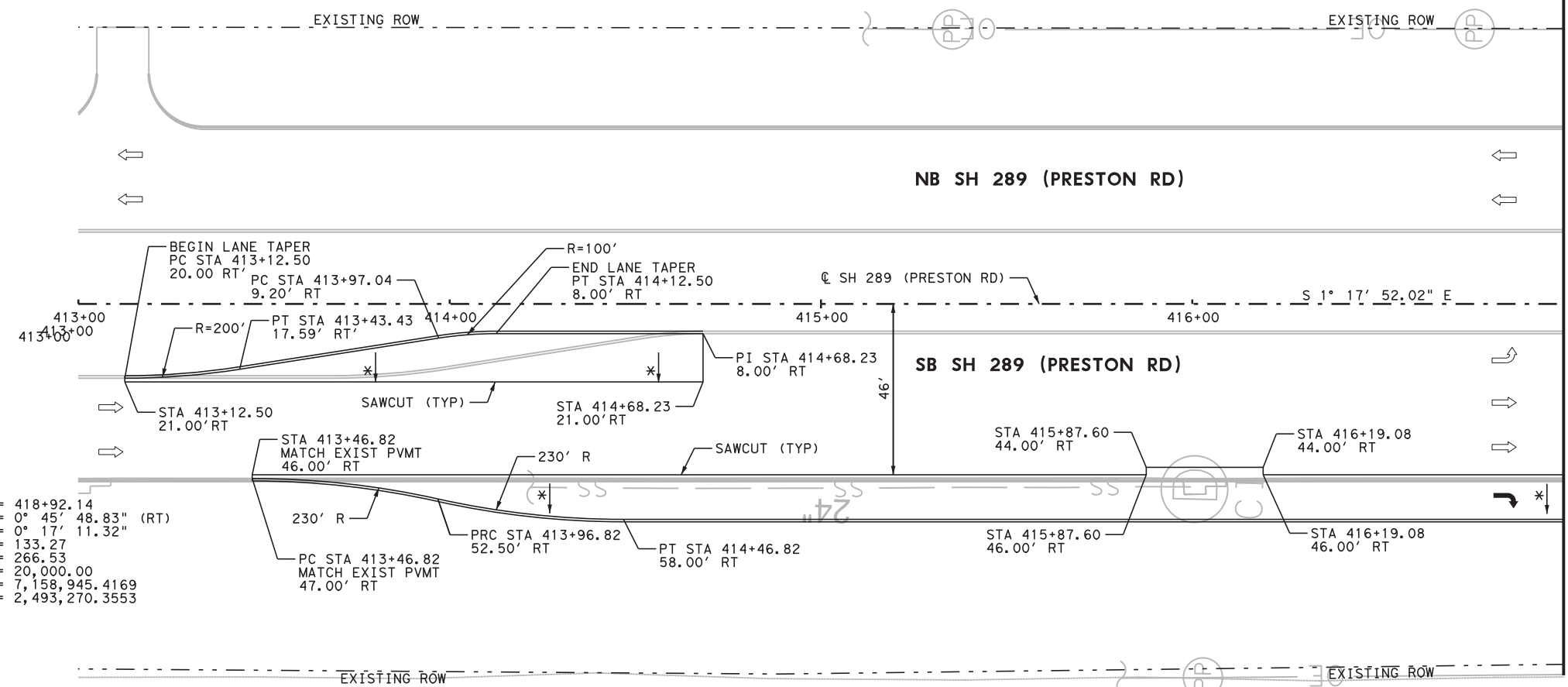


LEGEND:

- - - EXIST ROW
- . - . PROPOSED ROW
- TRAFFIC LANE
- ⊕ SOIL BORING
- ▬ ASPHALT PAVEMENT
- ▬ GRAVEL
- D-1A DRIVEWAY ID
- EBFR-# CURVE ID
- * MATCH EXIST CROSS SLOPE

NOTES:

1. ALL CALLOUTS REFER TO FACE OF CURB OR EDGE OF SHOULDER UNLESS OTHERWISE NOTED.
2. SEE TYPICAL SECTION SHEETS FOR ADDITIONAL INFORMATION.
3. SEE HORIZONTAL ALIGNMENT DATA SHEETS FOR ADDITIONAL INFORMATION.
4. REFER TO CROSS STREET PLAN AND PROFILE SHEETS FOR INFORMATION NOT SHOWN AT INTERSECTIONS.
5. REFER TO EASTBOUND MAINLANES PLAN & PROFILE FOR INFORMATION NOT SHOWN.
6. REFER TO INTERSECTION LAYOUT SHEETS FOR INTERSECTION CROSS-SLOPE TRANSITIONS REFER TO DRAINAGE SHEETS FOR DITCH, GRADING AND DRAINAGE INFORMATION NOT SHOWN.
- 7.



9/28/21

NO.	DATE	REVISION	APPROV.
09/28/21		LAYDOWN NOSE REVISION	JG

COLLIN COUNTY OUTER LOOP



PRESTON RD (SH 289)
PLAN
STA 413+00 TO STA 421+00.00

SHEET 1 OF 2

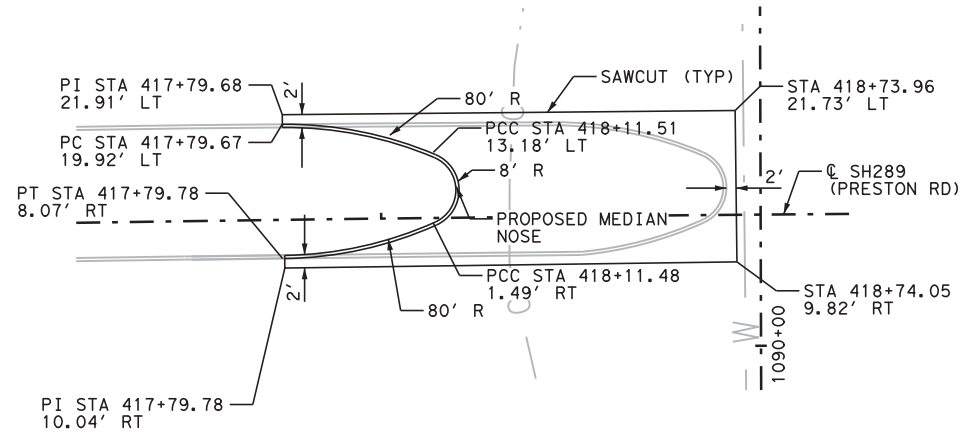


FIRM REGISTRATION: F-2966
 BOND PROJECT NO. 07-094 SHEET 130

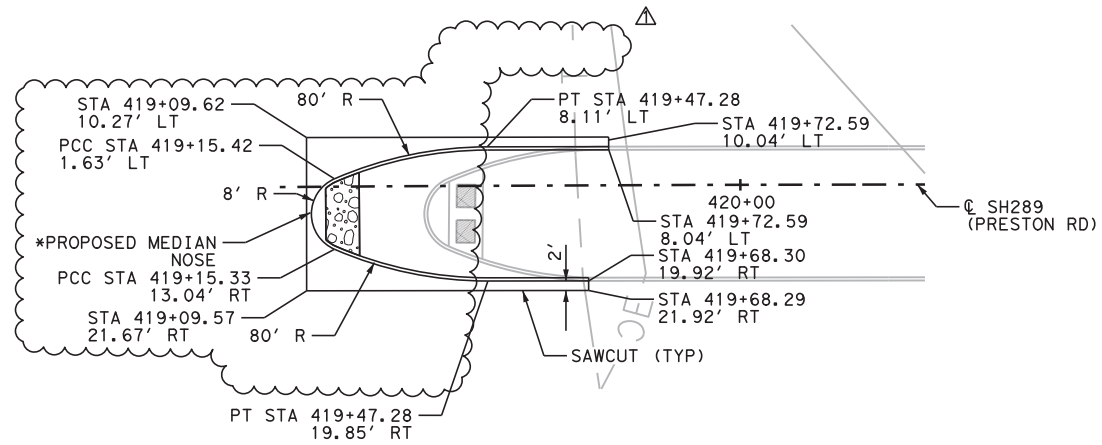
§USERS

9/27/2021 5:14:36 PM \\denipw01\dfs\pwworking\342088_13\CCOL_PP_PRESTON-INT01.dgn

9/27/2021 5:14:36 PM \\denipw01\dfs\pwworking\342088_13\CCOL_PP_PRESTON-INT01.dgn

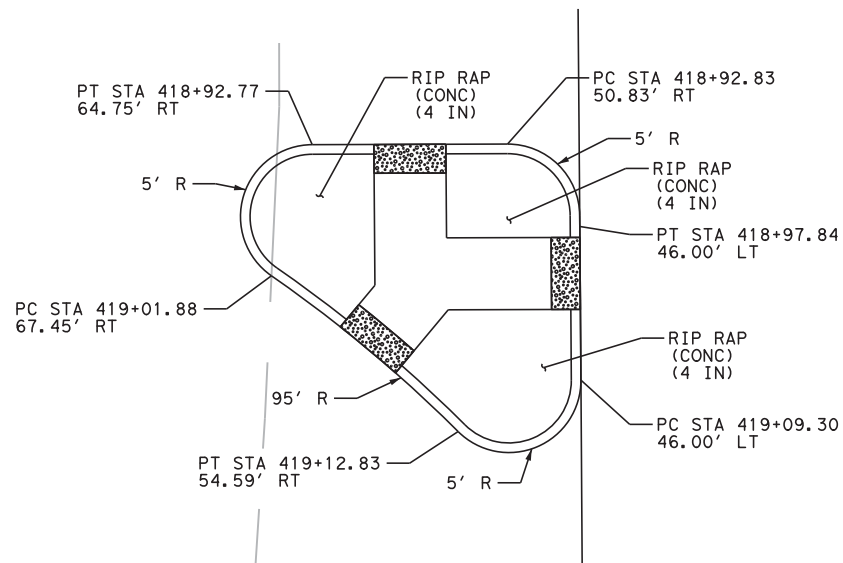


NORTH SH 289 PROPOSED MEDIAN NOSE
NOT TO SCALE

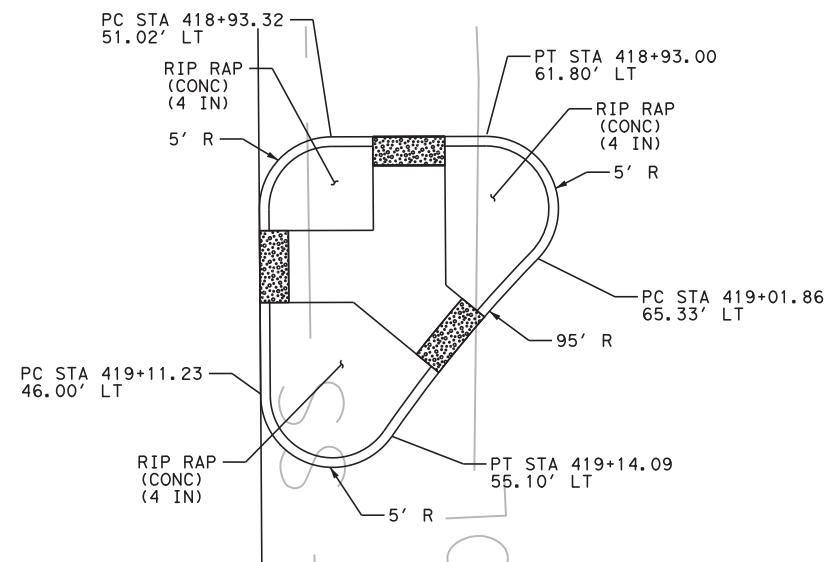


SOUTH SH 289 PROPOSED MEDIAN NOSE
NOT TO SCALE

- NOTES:**
1. ALL CALLOUTS REFER TO FACE OF CURB OR EDGE OF SHOULDER UNLESS OTHERWISE NOTED.
 2. SEE PRESTON RD (SH 289) PLAN SHEET 1 OF 2 FOR DETAILS NOT SHOWN.
 3. ALL CALLOUTS ARE TAKEN FROM THE SH289.
- * REFER TO CITY OF CELINA STREET DETAILS 10 FOR LAYDOWN MEDIAN NOSE DETAILS.



WEST SH 289 ISLAND
NOT TO SCALE



EAST SH 289 ISLAND
NOT TO SCALE



9/28/21

NO.	DATE	REVISION	APPROV.
09/28/21		LAYDOWN NOSE REVISION	JG

COLLIN COUNTY OUTER LOOP



SH 289 MISCELLANEOUS
ROADWAY DETAILS

SHEET 2 OF 2

JACOBS
FIRM REGISTRATION: F-2966

BOND PROJECT NO. 07-094 SHEET 142

\$USER\$

9/27/2021 5:14:27 PM \\denpwp01\ds\pwi\eswor\king\330859\342088_80\CCOL_MISC_RDY02.dgn

\$PWURL

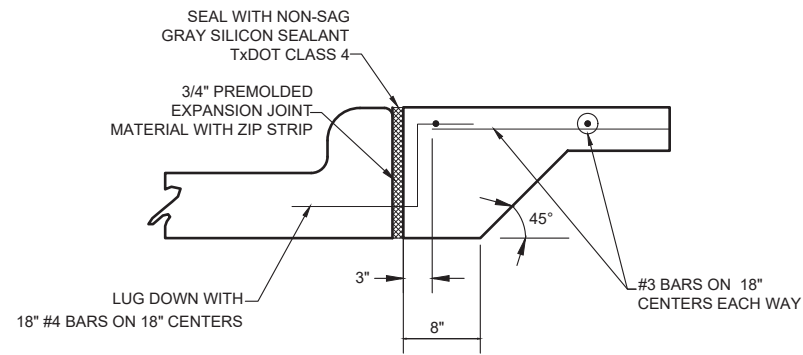
\$PWPATH

FILENAME:CCOL_MISC_RDY02.dgn

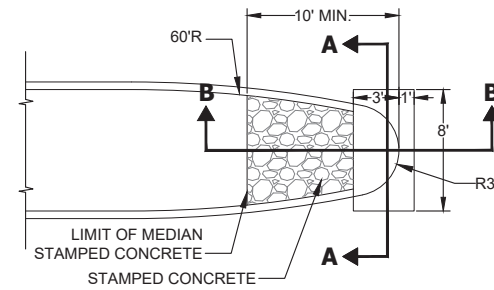
PLOT DATE:

PLOT TIME:

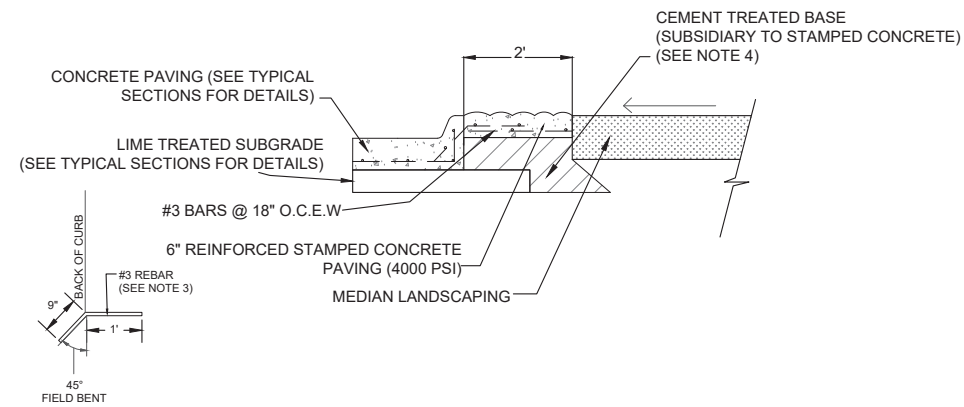
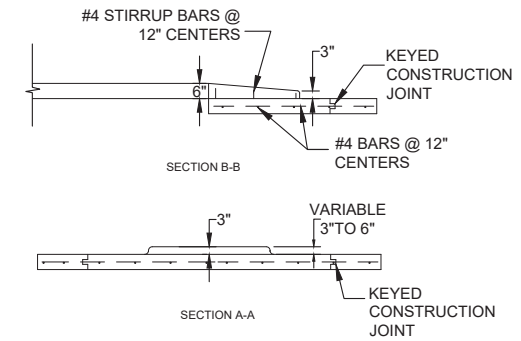
9/27/2021 5:14:27 PM \\denpwp01\ds\pwi\eswor\king\330859\342088_80\CCOL_MISC_RDY02.dgn



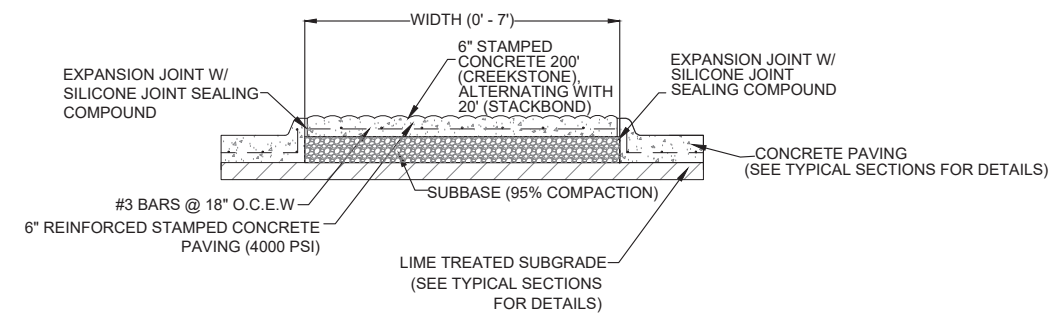
MEDIAN LUG DETAIL
N.T.S.



LAYDOWN MEDIAN NOSE DETAIL
N.T.S.



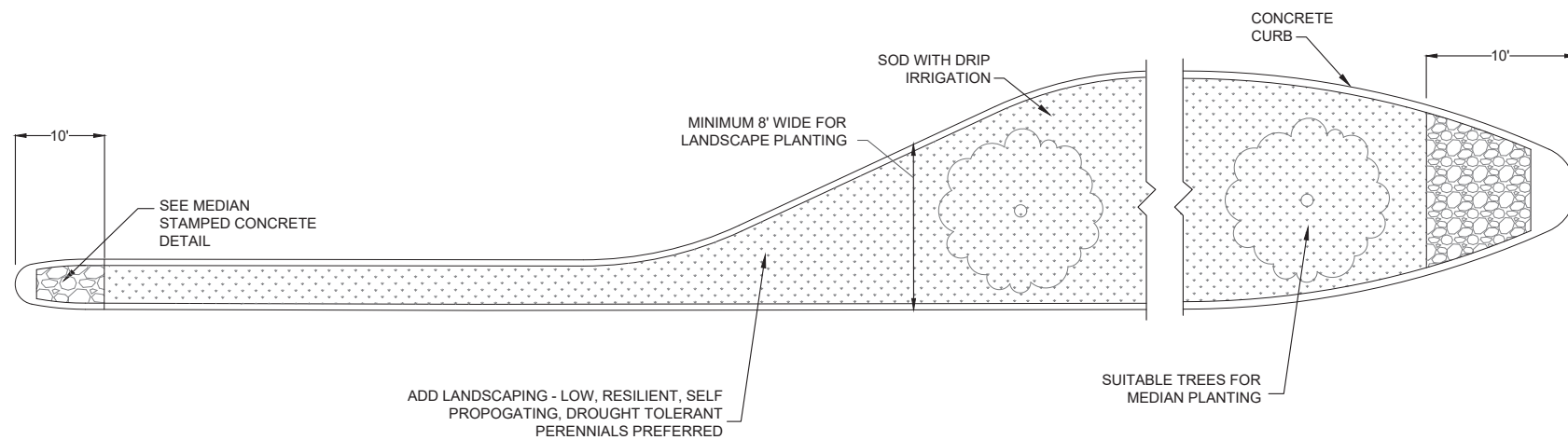
MEDIAN EDGE STAMPED CONCRETE DETAIL
N.T.S.



MEDIAN STAMPED CONCRETE DETAIL
N.T.S.

NOTES:
 ROADWAY MEDIAN STAMPED CONCRETE
 FIRST 50' OF PATTERN SHALL BE:
 PATTERN: BOMANITE-BOMACON CREEK STONE
 COLOR: LIGHT SAND COLOR HARDENER
 LIGHT BROWN (BC-2 CH-00135-60) RELEASE AGENT
 DARK WALNUT CHEMICAL STAIN (DILUTED TO ANTIQUE)
 AUBURN CHEMICAL STAIN (DILUTED TO ANTIQUE)
 PINE CHEMICAL STAIN (DILUTED TO ANTIQUE)

ALTERNATING WITH 20' OF PATTERN SHALL BE:
 PATTERN: BOMANITE- STACKED BOND BRICK
 COLOR: RED CLAY(4D) INTEGRAL COLOR
 FOREST BROWN (BC-1 CH-00093-60) COLOR HARDENER
 FOREST BROWN (BC-1 CH-00093-60) RELEASE AGENT



TYPICAL MEDIAN STAMPED CONCRETE DETAIL
N.T.S.

- NOTES:**
- CONTRACTOR TO PROVIDE 6'X6' MOCK-UP OF EACH PATTERN AND COLOR PRIOR TO CONSTRUCTION, FOR CITY'S APPROVAL.
 - IF THE #3 REBAR IS TO BE PLACED AS A DOWEL BAR AFTER THE CURB IS CONSTRUCTED, THE DOWEL BAR MUST BE EPOXIED INTO A 1/2" INCH MAXIMUM DIAMETER DRILLED HOLE IN THE CURB EVERY TWO FEET.
 - CROSS SLOPE IS TO BE DETERMINED IN THE FIELD, TO PROVIDE A ONE PERCENT MINIMUM SLOPE WITH SMOOTH TRANSITIONS TO CURB LINES. THE CROSS SLOPE IS TO BE SUBJECT TO THE ENGINEERS APPROVAL.
 - IN ADDITION TO THE REQUIREMENTS OF THE STANDARD SPECIFICATIONS, MEDIAN, AND CROSSWALK PAVEMENT SPECIFICATIONS SHALL BE IN ACCORDANCE WITH "BOMANITE CORPORATION" OR APPROVED EQUAL. THIS INCLUDES THEIR REQUIREMENTS FOR EXPANSION JOINTS, JOINT FILLERBOARD, WELDED WIRE FABRIC AND CONCRETE MIX.
 - ALL STAMPED CONCRETE SHALL BE INSTALLED IN ACCORDANCE WITH THE STANDARD SPECIFICATIONS OF "BOMANITE CORPORATION" OR APPROVED EQUAL. THE CONTRACTOR PERFORMING THE WORK MUST SUBMIT A LETTER FROM THE ABOVE TOOLING MANUFACTURER STATING THAT THE INSTALLER OF THE WORK IS LICENSED TO PERFORM THE SPECIFIED WORK.
 - ALL WORK PERFORMED MUST BE OF THE SAME MANUFACTURER AND ALL MATERIALS USED, INCLUDING CONCRETE MIX, MUST BE THE SAME FOR THE ENTIRE PROJECT. COLOR HARDENERS AND RELEASE AGENTS AS RECOMMENDED BY THE TOOLING MANUFACTURER SHALL BE USED.
 - BEDDING SAND SHALL CONFORM TO THE GRADING REQUIREMENTS OF ASTM C 33 AS SHOWN IN TABLE 1.
 - STAMPED CONCRETE TO FOLLOW EXPANSION AND CONTROL JOINT PATTERN OF THE ROADWAY.

NEW SHEET

CITY OF CELINA
 STREET DETAILS 10
 STANDARD DETAILS

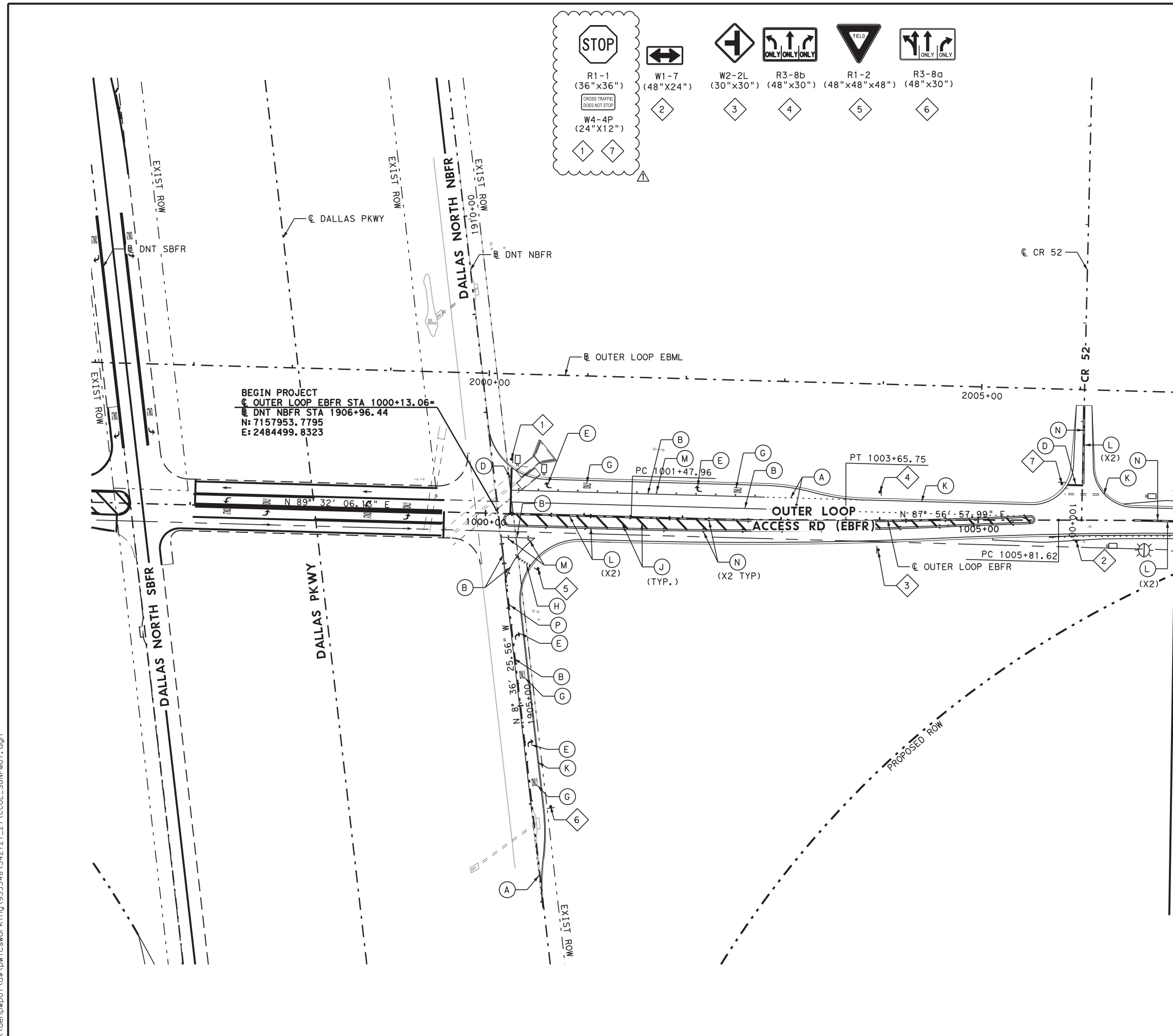


Life Connected.

DESIGNED BY: C.O	REV. BY:	DATE	SYMBOL	DATE: APRIL 2021
CHECKED BY: G.J	SCALE: NOT TO SCALE			SHEET NO.: ST-10

\$USERS\$

10/7/2021 3:14:17 PM \\denipw01\dfs\pwork\king\342127_27\CCOL_SGNPM01.dgn



STOP
R1-1 (36"x36")
W4-4P (24"x12")
W1-7 (48"x24")
W2-2L (30"x30")
R3-8b (48"x30")
R1-2 (48"x48"x48")
R3-8a (48"x30")

ONLY ONLY ONLY
W1-7 (48"x24")
W2-2L (30"x30")
R3-8b (48"x30")
R1-2 (48"x48"x48")
R3-8a (48"x30")

YIELD
R1-2 (48"x48"x48")

ONLY ONLY
R3-8a (48"x30")

MATCH LINE - STA 1007+00

- LEGEND**
- (A) REFL PAV MRK TY I (W) 8" (DOT) (100MIL)
 - (B) REFL PAV MRK TY I (W) 8" (SLD) (100MIL)
 - (C) REFL PAV MRK TY I (W) 12" (SLD) (100MIL)
 - (D) REFL PAV MRK TY I (W) 24" (SLD) (100MIL)
 - (E) REFL PAV MRK TY I (W) (ARROW) (100MIL)
 - (F) REFL PAV MRK TY I (W) (DBL ARROW) (100MIL)
 - (G) REFL PAV MRK TY I (W) (WORD) (100MIL)
 - (H) REF PAV MRK TY I (W) 36" (YLD TRI) (100MIL)
 - (J) REFL PAV MRK TY I (Y) 12" (SLD) (100MIL)
 - (K) RE PM W/RET REQ TY I (W) 4" (SLD) (100MIL)
 - (L) RE PM W/RET REQ TY I (Y) 4" (SLD) (100MIL)
 - (M) REFL PAV MRKR TY I-C @ 20' C-C
 - (N) REFL PAV MRKR TY II-A-A @ 40' C-C
 - (P) REFL PAV MRKR TY II-C-R @ 20' C-C
 - [Symbol] OBJECT MARKER (OM-2)
 - [Symbol] DELINEATOR (D-SW) (BI)
 - [Symbol] PROPOSED SIGN



10/7/2021

ONLY RESPONSIBLE FOR REVISIONS DESIGNATED BY Δ

NO.	DATE	REVISION	JG APPROV.
Δ 10/07/21		STOP SIGNS REVISIONS	JG

COLLIN COUNTY OUTER LOOP

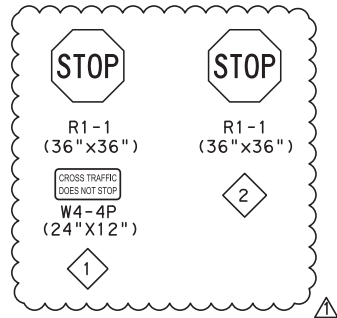


SIGNING & PAVEMENT MARKINGS
ACCESS ROAD
BEGIN PROJECT TO STA 1007+00

SHEET 1 OF 14

BGE Inc.
2595 Dallas Parkway, Suite 101, Ft. Worth, TX 75034
Tel: 972-494-4800 • www.bgeinc.com
TSP# Registration No. F-1046

BOND PROJECT NO. 07-094 SHEET 330



- LEGEND**
- (A) REFL PAV MRK TY I (W) 8" (DOT) (100MIL)
 - (B) REFL PAV MRK TY I (W) 8" (SLD) (100MIL)
 - (C) REFL PAV MRK TY I (W) 12" (SLD) (100MIL)
 - (D) REFL PAV MRK TY I (W) 24" (SLD) (100MIL)
 - (E) REFL PAV MRK TY I (W) (ARROW) (100MIL)
 - (F) REFL PAV MRK TY I (W) (DBL ARROW) (100MIL)
 - (G) REFL PAV MRK TY I (W) (WORD) (100MIL)
 - (H) REF PAV MRK TY I (W) 36" (YLD TRI) (100MIL)
 - (J) REFL PAV MRK TY I (Y) 12" (SLD) (100MIL)
 - (K) RE PM W/RET REQ TY I (W) 4" (SLD) (100MIL)
 - (L) RE PM W/RET REQ TY I (Y) 4" (SLD) (100MIL)
 - (M) REFL PAV MRKR TY I-C @ 20' C-C
 - (N) REFL PAV MRKR TY II-A-A @ 40' C-C
 - (P) REFL PAV MRKR TY II-C-R @ 20' C-C
 - OBJECT MARKER (OM-2)
 - ⊕ DELINEATOR (D-SW) (BI)
 - ▲ PROPOSED SIGN



10/7/2021

ONLY RESPONSIBLE FOR REVISIONS DESIGNATED BY ▲

NO.	DATE	REVISION	JG APPROV.
▲	10/07/21	STOP SIGNS REVISIONS	JG

COLLIN COUNTY OUTER LOOP



SIGNING & PAVEMENT MARKINGS
ACCESS ROAD
STA 1029+00 TO STA 1040+00

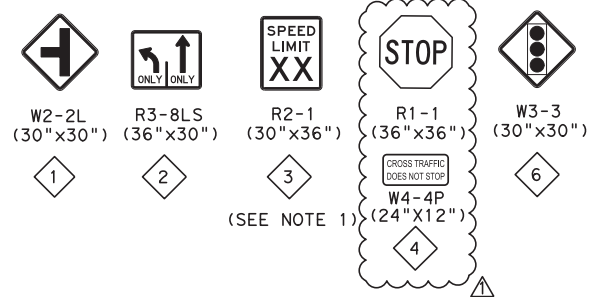
SHEET 4 OF 14

BGE Inc.
 2595 Dallas Parkway, Suite 101, Ft. Worth, TX 75034
 Tel: 972-494-4800 • www.bgeinc.com
 TSP# Registration No. F-1046

BOND PROJECT NO. 07-094 SHEET 333

\$USER\$

10/7/2021 3:14:17 PM \\denipw01\dfs\pwork\king\335348\342127_30\CCOL_SGNPM04.dgn



- LEGEND**
- (A) REFL PAV MRK TY I (W) 8" (DOT) (100MIL)
 - (B) REFL PAV MRK TY I (W) 8" (SLD) (100MIL)
 - (C) REFL PAV MRK TY I (W) 12" (SLD) (100MIL)
 - (D) REFL PAV MRK TY I (W) 24" (SLD) (100MIL)
 - (E) REFL PAV MRK TY I (W) (ARROW) (100MIL)
 - (F) REFL PAV MRK TY I (W) (DBL ARROW) (100MIL)
 - (G) REFL PAV MRK TY I (W) (WORD) (100MIL)
 - (H) REF PAV MRK TY I (W) 36" (YLD TRI) (100MIL)
 - (J) REFL PAV MRK TY I (Y) 12" (SLD) (100MIL)
 - (K) RE PM W/RET REQ TY I (W) 4" (SLD) (100MIL)
 - (L) RE PM W/RET REQ TY I (Y) 4" (SLD) (100MIL)
 - (M) REFL PAV MRKR TY I-C @ 20' C-C
 - (N) REFL PAV MRKR TY II-A-A @ 40' C-C
 - (P) REFL PAV MRKR TY II-C-R @ 20' C-C
 - OBJECT MARKER (OM-2)
 - DELINEATOR (D-SW) (BI)
 - ◆ PROPOSED SIGN

NOTES

1. THE POSTED SPEED LIMIT FOR COLLIN COUNTY OUTER LOOP SHALL BE DETERMINED BY COLLIN COUNTY DEPARTMENT OF PUBLIC WORKS AND PROVIDED TO THE CONTRACTOR.

0 50 100
SCALE: 1"=100'



10/8/2021

ONLY RESPONSIBLE FOR REVISIONS
DESIGNATED BY

NO.	DATE	REVISION	JG APPROV.
1	10/07/21	STOP SIGNS REVISIONS	JG

COLLIN COUNTY OUTER LOOP



SIGNING & PAVEMENT MARKINGS
ACCESS ROAD
STA 1073+00 TO STA 1084+00

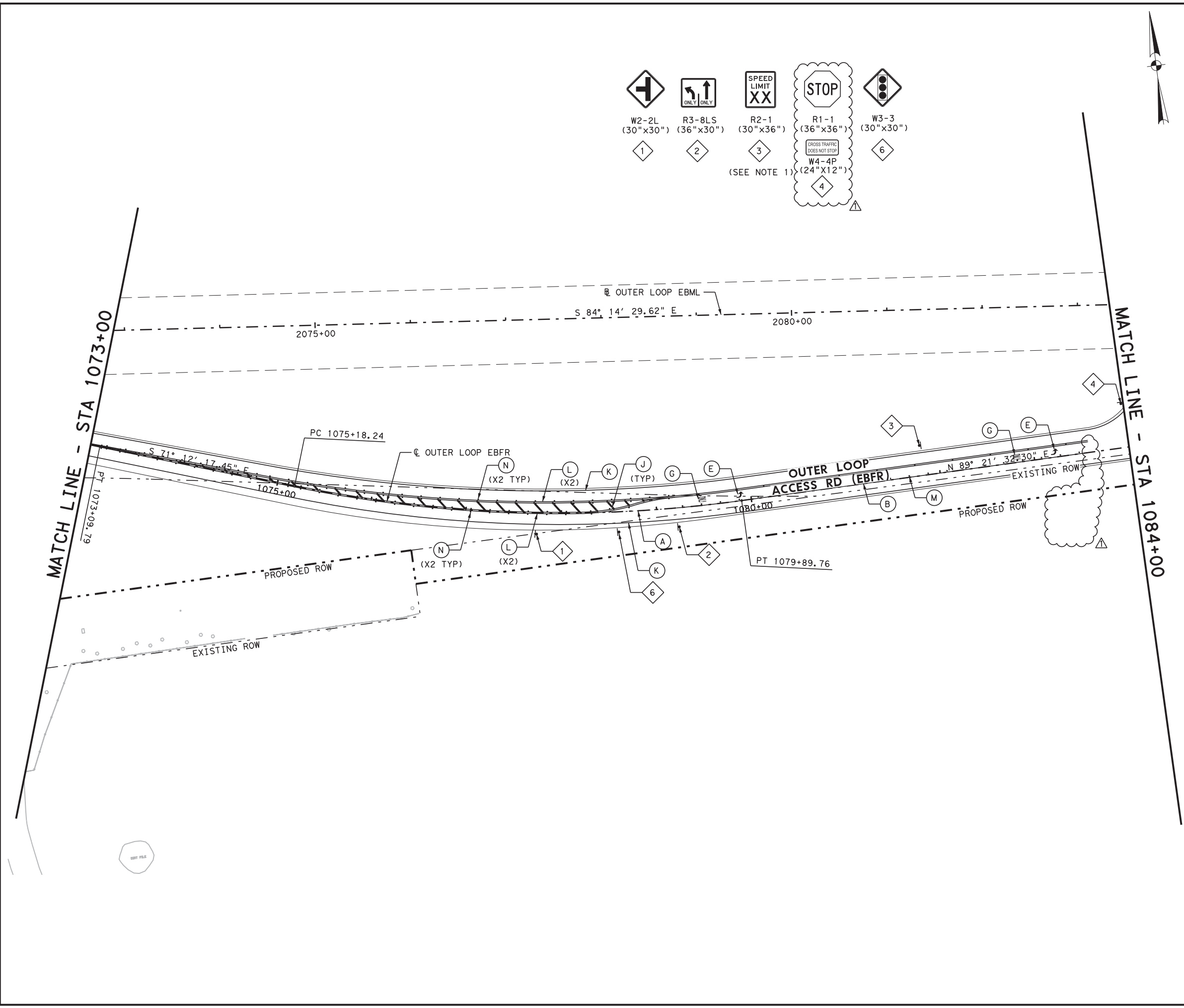
SHEET 8 OF 14

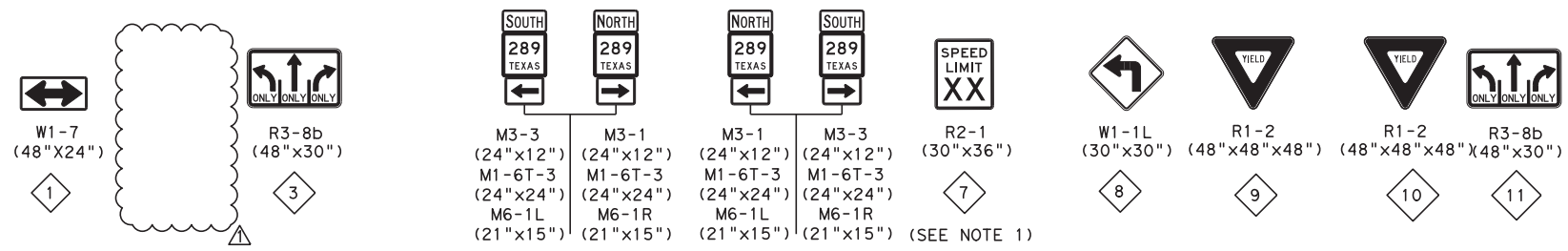
BGE Inc.
2595 Dallas Parkway, Suite 101, Ft. Worth, TX 75034
Tel: 972-494-4800 • www.bgeinc.com
TSP# Registration No. F-1046

BOND PROJECT NO. 07-094 SHEET 337

10/7/2021 3:14:19 PM \\denpwp01\dfs\pwworking\335348\342127_34\CCOL_SGNPM08.dgn \$USER\$

10/7/2021 3:14:19 PM \\denpwp01\dfs\pwworking\335348\342127_34\CCOL_SGNPM08.dgn





- LEGEND**
- (A) REFL PAV MRK TY I (W) 8" (DOT) (100MIL)
 - (B) REFL PAV MRK TY I (W) 8" (SLD) (100MIL)
 - (C) REFL PAV MRK TY I (W) 12" (SLD) (100MIL)
 - (D) REFL PAV MRK TY I (W) 24" (SLD) (100MIL)
 - (E) REFL PAV MRK TY I (W) (ARROW) (100MIL)
 - (F) REFL PAV MRK TY I (W) (DBL ARROW) (100MIL)
 - (G) REFL PAV MRK TY I (W) (WORD) (100MIL)
 - (H) REF PAV MRK TY I (W) 36" (YLD TRI) (100MIL)
 - (J) REFL PAV MRK TY I (Y) 12" (SLD) (100MIL)
 - (K) RE PM W/RET REQ TY I (W) 4" (SLD) (100MIL)
 - (L) RE PM W/RET REQ TY I (Y) 4" (SLD) (100MIL)
 - (M) REFL PAV MRKR TY I-C @ 20' C-C
 - (N) REFL PAV MRKR TY II-A-A @ 40' C-C
 - (P) REFL PAV MRKR TY II-C-R @ 20' C-C
 - OBJECT MARKER (OM-2)
 - ⊘ DELINEATOR (D-SW) (BI)
 - ⬢ PROPOSED SIGN

NOTES

- THE POSTED SPEED LIMIT FOR COLLIN COUNTY OUTER LOOP SHALL BE DETERMINED BY COLLIN COUNTY DEPARTMENT OF PUBLIC WORKS AND PROVIDED TO THE CONTRACTOR.

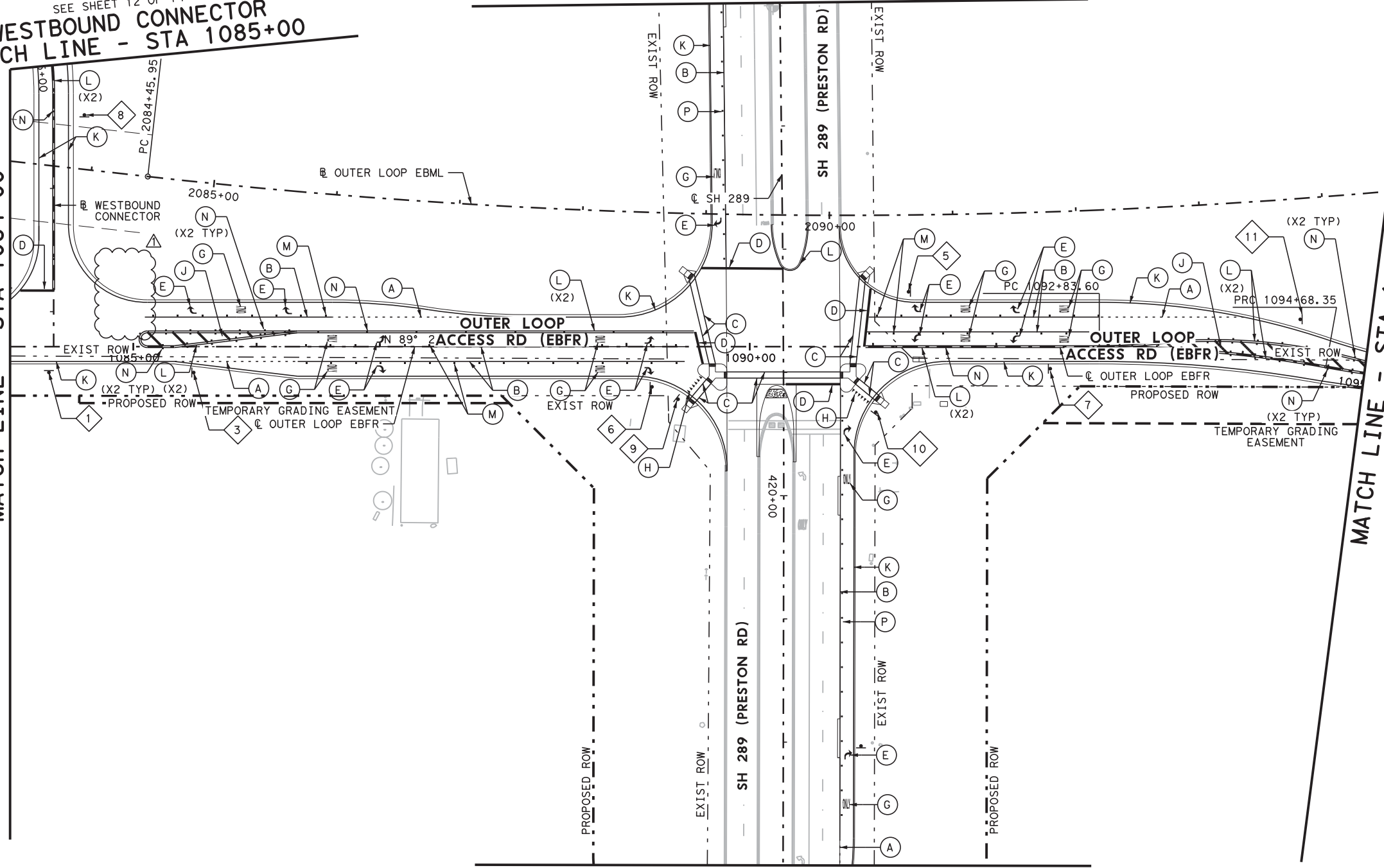
0 50 100
SCALE: 1"=100'

SEE SHEET 12 OF 14
WESTBOUND CONNECTOR
MATCH LINE - STA 1085+00

SEE SHEET 13 OF 14
MATCH LINE - STA 416+00

MATCH LINE - STA 1084+00

MATCH LINE - STA 1095+00



MATCH LINE - STA 423+00
SEE SHEET 14 OF 14

10/7/2021

ONLY RESPONSIBLE FOR REVISIONS
DESIGNATED BY

NO.	DATE	REVISION	APPROV.
1	10/07/21	STOP SIGNS REVISIONS	JG

COLLIN COUNTY OUTER LOOP

SIGNING & PAVEMENT MARKINGS
ACCESS ROAD
STA 1084+00 TO STA 1095+00

SHEET 9 OF 14

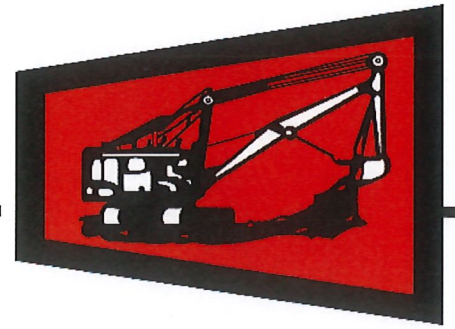
BGE Inc.
2595 Dallas Parkway, Suite 101, Ft. Worth, TX 75034
Tel: 972-494-4800 • www.bgeinc.com
TSP# Registration No. F-1946

BOND PROJECT NO. 07-094 SHEET 338

10/7/2021 3:14:19 PM \\denpwp01\dfs\pfiles\work\king\935348\342127_35\CCOL_SGNPM09.dgn
 \$USER\$
 \$PWURL

10/7/2021 3:14:19 PM \\denpwp01\dfs\pfiles\work\king\935348\342127_35\CCOL_SGNPM09.dgn

MARIO SINACOLA & SONS
EXCAVATING, INC.



Roadway: Collin County Outer Loop Access Road
Project: 659333CH

September 13, 2021

Jesus Gonzalez
Jacobs
1999 Bryan Street, Suite 1200
Dallas, Texas 75201

RE: Celina Median Nose

Mr. Gonzalez,

Attached is pricing to install the Celina standard median nose on the Preston Road south median. At this time this issue was raised all removals and concrete paving on this project had been completed. This will require remobilization of labor, equipment and additional traffic control.

The added concrete removal and price to form and pour the median nose is \$14,325.18. To add the colored/stamped concrete will be an additional \$3,601.25.

If you have any questions or comments, please do not hesitate to call. I can be reached at 469-346-8085.

Thank you,

Eric Giebelhaus
Project Manager



County Collin CIP 659333CH Bid No. _____ Highway Outer Loop Access Road

Description of Work: *Change Preston Road Median nose to Celina Standard with Mono Nose - FORM & POUR CONCRETE, BACKFILL*
 Date: 7-Sep-21

EQUIPMENT				Labor					
Description	Hrs	Rate	Amount	Hours		Rate		Amount	
				Reg.	O.T.	Reg.	O.T.		
		\$ -	\$ -	4.00		\$ 55.00	\$ -	\$ 220.00	
Foreman Pickup	32.00	\$ 25.07	\$ 802.24	8.00		\$ 45.00	\$ -	\$ 360.00	
Rubber Tire Backhoe	8.00	\$ 65.57	\$ 524.56	8.00		\$ 30.00	\$ -	\$ 240.00	
		\$ -	\$ -	32.00		\$ 22.00	\$ -	\$ 704.00	
		\$ -	\$ -	80.00		\$ 24.00	\$ -	\$ 1,920.00	
		\$ -	\$ -	8.00		\$ 40.00	\$ -	\$ 320.00	
		\$ -	\$ -	16.00		\$ 20.00	\$ -	\$ 320.00	
			\$ -			\$ -	\$ -	\$ -	
			\$ -			\$ -	\$ -	\$ -	
			\$ -			\$ -	\$ -	\$ -	
			\$ -			\$ -	\$ -	\$ -	
			\$ -			\$ -	\$ -	\$ -	
			\$ -			\$ -	\$ -	\$ -	
			\$ -			\$ -	\$ -	\$ -	
			\$ -			\$ -	\$ -	\$ -	
			\$ -			\$ -	\$ -	\$ -	
		Sub-Total	\$ 1,326.80				Sub-Total	\$ 4,084.00	
		15%	\$ 199.02				55%	\$ 2,246.20	
		Total Equipment:	\$ 1,525.82				15%	\$ 612.60	
							Total Labor:	\$ 6,942.80	

Material - Supply					Subcontract				
Description	Quantity	UOM	Rate	Amount		Quantity	UOM	Rate	Amount
Form Material	1.00	LS	\$ 200.00	\$ 200.00				\$ -	\$ -
Concrete	10.00	CY	\$ 118.00	\$ 1,180.00				\$ -	\$ -
			\$ -	\$ -				\$ -	\$ -
			\$ -	\$ -				\$ -	\$ -
			\$ -	\$ -				\$ -	\$ -
			\$ -	\$ -				\$ -	\$ -
			\$ -	\$ -				\$ -	\$ -
			\$ -	\$ -				\$ -	\$ -
			\$ -	\$ -				\$ -	\$ -
			\$ -	\$ -				\$ -	\$ -
			\$ -	\$ -				\$ -	\$ -
			\$ -	\$ -				\$ -	\$ -
			\$ -	\$ -				\$ -	\$ -
			\$ -	\$ -				\$ -	\$ -
			\$ -	\$ -				\$ -	\$ -
		Sub-Total		\$ 1,380.00				Sub-Total	\$ -
		15%		\$ 207.00				5%	\$ -
		Total Material:		\$ 1,587.00				Total Subcontract:	\$ -

Summary	
Labor	\$ 6,942.80
Equipment	\$ 1,525.82
Material	\$ 1,587.00
Subcontract	\$ -
Bond 1%	\$ 100.56
Total Change Request	\$ 10,156.18

From: [Frank Ciaravino](#)
To: [Eric Giebelhaus](#)
Subject: Quote
Date: Tuesday, September 28, 2021 1:13:57 PM

Eric
This is for Collin county outer loop
6" stamped concrete at noses 10' long for \$2,399.00 EA

Sent from my iPhone

A & J SIGNS

2227 Handley Ederville Rd
 Fort Worth, TX 76118
 (817)595-0062

Estimate

Date	Estimate #
9/30/2021	1096

Name / Address
Mario Sinacola & Sons Oscar Fuentes

			Project
Description	Qty	Rate	Total
W4-4p DG Aluminum YEL 24x12	4	20.00	80.00T
		Subtotal	\$80.00
		Sales Tax (8.25%)	\$6.60
		Total	\$86.60