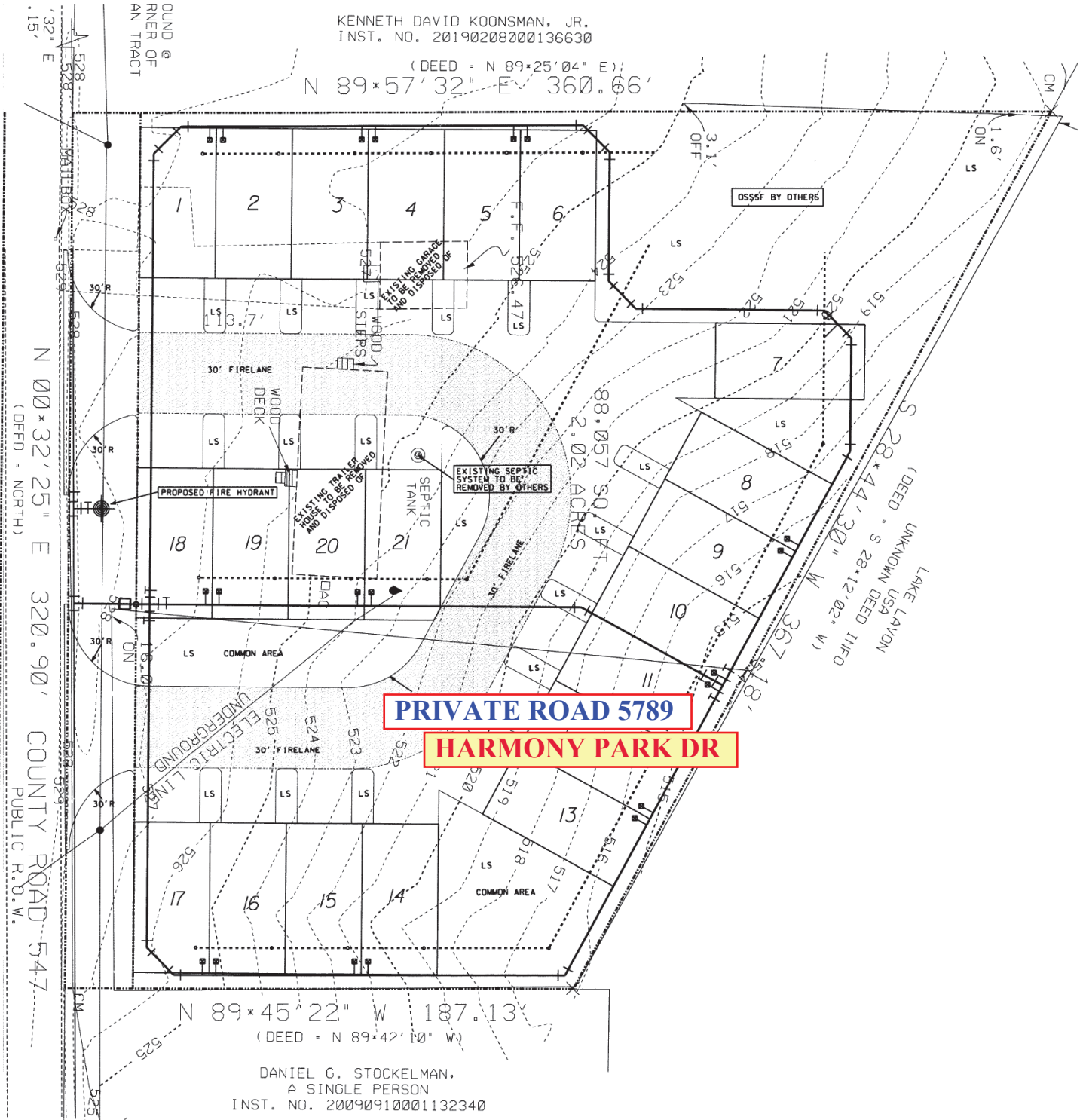


KENNETH DAVID KOONSMAN, JR.
INST. NO. 20190208000136630

(DEED = N 89°25'04" E)
N 89°57'32" E 360.66'

OUND @
RNER OF
AN TRACT



PRIVATE ROAD 5789

HARMONY PARK DR

N 89°45'22" W 187.13'

(DEED = N 89°42'10" W)

DANIEL G. STOCKELMAN,
A SINGLE PERSON
INST. NO. 20090910001132340

HELMBERGER ASSOCIATES, INC. - F-00756
CIVIL/ENVIRONMENTAL ENGINEERS
ELIMINARY - FOR INTERIM REVIEW ONLY
as documents are for Interim Review and not
made for Construction, Bidding, or Permit
poses. They were prepared by, or under the
revision of,
Dale T. Helmberger #92372

OWNER:
PRANAV & BHARGAV
HARMONY LUXURY RV PARK, LLC
5200 WINDHAVEN PARKWAY, APT. 1308
LEWISVILLE, TEXAS 75056
(832) 474-4655

ENGINEER:
HELMBERGER ASSOCIATES, INC.
1525 BOZMAN ROAD
WYLIE, TEXAS 75098
RANDALL T. HELMBERGER, P.E.
(972) 442-7459

SITE PLAN / SITE IMPROVEMENTS						
HARMONY LUXURY RV PARK						
5211 COUNTY ROAD 547						
COLLIN COUNTY, TEXAS						
TBP#		H		HELMBERGER ASSOCIATES, INC.		
REGISTRATION NO.		F-000756		CIVIL AND ENVIRONMENTAL ENGINEERS		
DESIGN		DATE	SCALE	NOTES	FILE	NO.
HELM.	CADD	AUGUST 2021	1"=20'	SPLAN	214	C1

GENERAL NOTES!!
FIRE LANE, DRIVE LANES, PARKING AND RV PARKING SPOTS
TO BE 7" THICK ROCK ON 6" FLEX BASE SUBGRADE
PLACED AND COMPACTED TO 95% STANDARD
PROCTOR (ASTM-D-698) AT OR SLIGHTLY ABOVE
MOISTURE CONTACT.
RV PADS TO VARY LOCATION ON EACH LOT DUE TO
EXISTING TREE LOCATIONS

