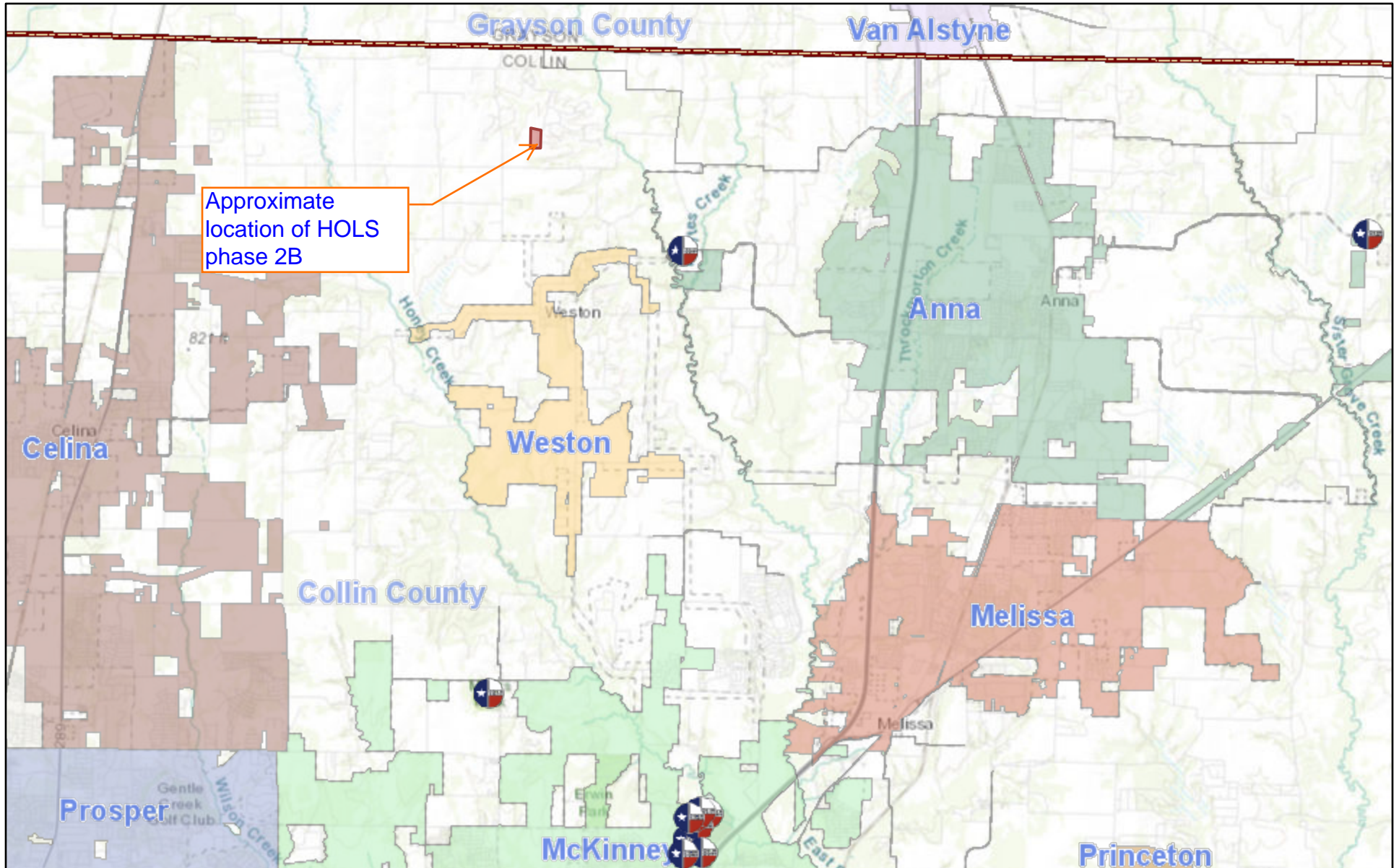
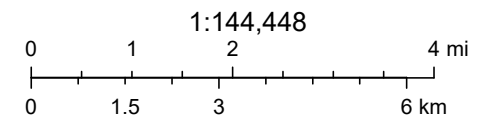


HILLS OF LONE STAR REPLAT TRACT 1



2/7/2022, 12:44:57 PM

The Hills of Lone Star phase 2B is located approximately 2.4 miles north of the city of Weston, within the Hills of Lone Star development.



Sources: Esri, HERE, Garmin, Intermap, increment P Corp., GEBCO, USGS, FAO, NPS, NRCAN, GeoBase, IGN, Kadaster NL, Ordnance Survey, Esri

ArcGIS Web AppBuilder

Texas Parks & Wildlife, Esri, HERE, Garmin, USGS, NGA, EPA, USDA, NPS | Gabriela, bmf | TCEQ Info Resources Division |