

# 2022 Population Estimates

## North Central Texas Council of Governments

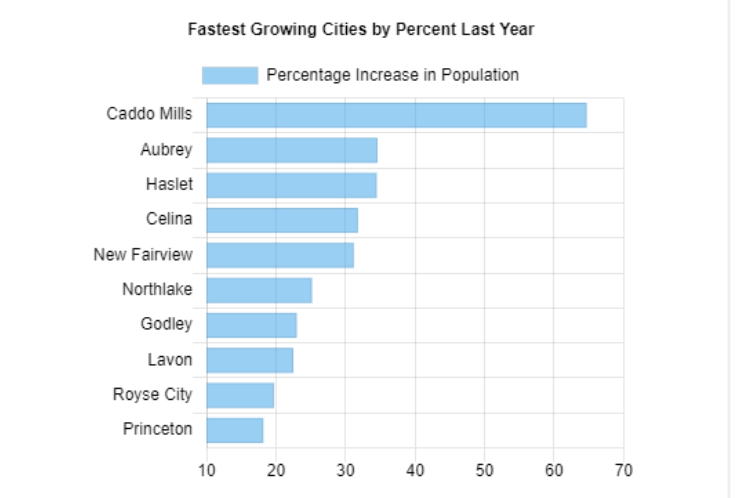
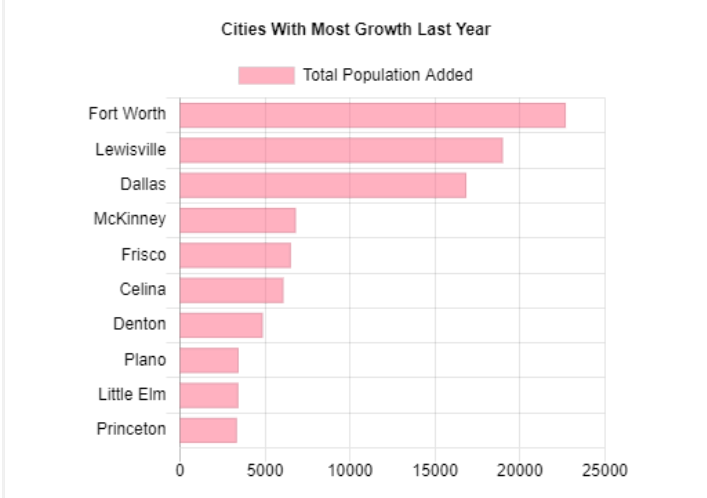
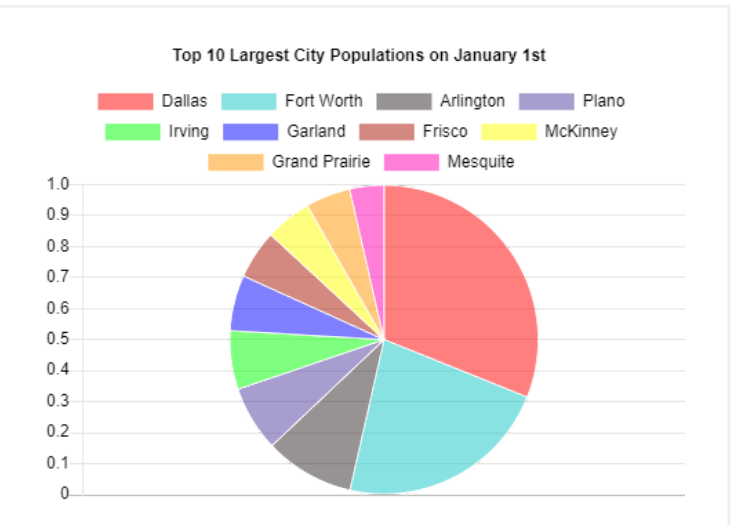
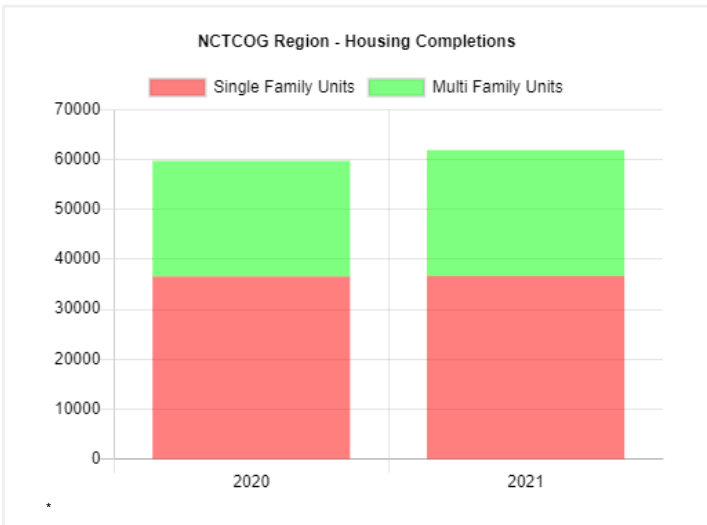


### Summary

The estimated January 1, 2022 population for the NCTCOG region is 8,097,170. Last year the region added 157,570 people. Regional growth last year was almost the same as it was in 2020. In 2021, 21 cities grew by 10% or more. Fort Worth led the region in growth, adding 22,710 people last year while Lewisville added 19,000, due in large part to the annexation of Castle Hills. They were followed by Dallas with just under 17,000 and McKinney with 6,800 and Frisco with 6,500. Collin, Denton, Dallas, and Tarrant Counties each added more than 23,000 people last year, with Collin County leading the way with 41,000 new residents. Ellis County is now over 200,000 and Hunt County over 100,000 population. Since 1990, the region has almost doubled in population.

Cities with populations of 1,000 or more are reported individually in this report.

### Highlights



## 2022 City Population Estimates

Name	2020 Census Population April 1	2021 Estimate January 1	2022 Estimate January 1	2021 - 2022 Absolute Change	2021 - 2022 Percent Change
Addison	16,661	17,150	17,720	570	3.3%
Aledo	4,858	5,020	5,010	-10	-0.2%
Allen	104,627	104,630	104,870	240	0.2%
Alvarado	4,739	4,930	5,330	400	8.1%
Alvord	1,351	1,360	1,360	0	0%
Anna	16,896	18,700	20,980	2,280	12.2%
Annetta	3,041	3,050	3,050	0	0%
Argyle	4,403	4,480	4,780	300	6.7%
Arlington	394,266	396,490	399,560	3,070	0.8%
Aubrey	5,006	5,630	7,580	1,950	34.6%
Aurora	1,390	1,390	1,390	0	0%
Azle	13,369	13,420	13,610	190	1.4%
Balch Springs	27,685	27,750	27,740	-10	0%
Bartonville	1,725	1,740	1,770	30	1.7%
Bedford	49,928	49,920	49,930	10	0%
Benbrook	24,520	24,960	25,240	280	1.1%
Blue Mound	2,393	2,390	2,390	0	0%
Blue Ridge	1,180	1,180	1,200	20	1.7%
Boyd	1,416	1,410	1,410	0	0%
Bridgeport	5,923	5,930	5,930	0	0%
Burleson	47,641	48,540	50,210	1,670	3.4%
Caddo Mills	1,495	1,840	3,030	1,190	64.7%
Carrollton	133,434	134,630	135,110	480	0.4%
Cedar Hill	49,148	50,140	50,280	140	0.3%
Celina	16,739	19,150	25,240	6,090	31.8%
Cleburne	31,352	31,890	32,640	750	2.4%
Cockrell Hill	3,815	3,820	3,820	0	0%
Colleyville	26,057	26,200	26,370	170	0.6%
Combine	2,245	2,270	2,300	30	1.3%
Commerce	9,090	9,110	9,180	70	0.8%
Coppell	42,983	43,120	43,140	20	0%
Copper Canyon	1,731	1,740	1,780	40	2.3%
Corinth	22,634	22,720	22,800	80	0.4%
Corsicana	25,109	25,100	25,140	40	0.2%
Crandall	3,860	3,920	4,080	160	4.1%
Cresson	1,349	1,350	1,350	0	0%
Cross Roads	1,744	1,740	1,830	90	5.2%
Crowley	18,070	18,350	18,600	250	1.4%
Dallas	1,304,379	1,304,870	1,321,740	16,870	1.3%
Dalworthington Gardens	2,293	2,300	2,300	0	0%
Decatur	6,538	6,850	6,910	60	0.9%
DeCordova	3,007	3,010	3,010	0	0%
Denton	139,869	141,880	146,750	4,870	3.4%
DeSoto	56,145	56,470	57,380	910	1.6%
Double Oak	3,054	3,060	3,080	20	0.7%

## 2022 City Population Estimates

Name	2020 Census Population April 1	2021 Estimate January 1	2022 Estimate January 1	2021 - 2022 Absolute Change	2021 - 2022 Percent Change
Dublin	3,359	3,370	3,370	0	0%
Duncanville	40,706	40,700	40,700	0	0%
Edgecliff Village	3,788	3,790	3,790	0	0%
Ennis	20,159	20,570	21,860	1,290	6.3%
Eules	61,032	61,080	61,480	400	0.7%
Everman	6,154	6,170	6,170	0	0%
Fairview	10,372	10,580	10,830	250	2.4%
Farmers Branch	35,991	36,570	38,140	1,570	4.3%
Farmersville	3,612	3,660	4,290	630	17.2%
Fate	17,958	20,080	22,890	2,810	14%
Ferris	2,788	2,820	3,070	250	8.9%
Flower Mound	75,956	76,820	78,570	1,750	2.3%
Forest Hill	13,955	14,150	14,190	40	0.3%
Forney	23,455	25,170	27,040	1,870	7.4%
Fort Worth	918,915	933,190	955,900	22,710	2.4%
Frisco	200,509	210,940	217,470	6,530	3.1%
Garland	246,018	246,020	247,590	1,570	0.6%
Glenn Heights	15,819	16,560	18,090	1,530	9.2%
Glen Rose	2,659	2,680	2,710	30	1.1%
Godley	1,450	1,610	1,980	370	23%
Granbury	10,958	10,950	11,440	490	4.5%
Grand Prairie	196,100	198,030	199,780	1,750	0.9%
Grandview	1,879	1,880	1,890	10	0.5%
Grapevine	50,631	52,000	52,000	0	0%
Greenville	28,164	28,640	30,450	1,810	6.3%
Hackberry	2,973	2,970	2,970	0	0%
Haltom City	46,073	46,120	46,260	140	0.3%
Haslet	1,952	2,030	2,730	700	34.5%
Heath	9,769	9,860	9,890	30	0.3%
Hickory Creek	4,718	4,900	5,440	540	11%
Highland Park	8,864	8,840	8,800	-40	-0.5%
Highland Village	15,899	15,950	16,020	70	0.4%
Hudson Oaks	2,174	2,500	2,830	330	13.2%
Hurst	40,413	40,420	40,430	10	0%
Hutchins	5,607	5,670	5,700	30	0.5%
Irving	256,684	258,860	261,350	2,490	1%
Italy	1,926	1,970	2,000	30	1.5%
Josephine	2,119	2,210	2,290	80	3.6%
Joshua	7,891	8,060	8,370	310	3.8%
Justin	4,409	5,250	5,820	570	10.9%
Kaufman	6,797	6,860	6,990	130	1.9%
Keene	6,387	6,400	6,500	100	1.6%
Keller	45,776	45,940	46,060	120	0.3%
Kemp	1,129	1,130	1,140	10	0.9%
Kennedale	8,517	8,530	8,530	0	0%

## 2022 City Population Estimates

Name	2020 Census Population April 1	2021 Estimate January 1	2022 Estimate January 1	2021 - 2022 Absolute Change	2021 - 2022 Percent Change
Kerens	1,505	1,500	1,510	10	0.7%
Krugerville	1,766	1,840	1,970	130	7.1%
Krum	5,483	5,710	5,790	80	1.4%
Lake Dallas	7,708	7,720	7,790	70	0.9%
Lakeside	1,649	1,650	1,660	10	0.6%
Lake Worth	4,711	4,720	4,710	-10	-0.2%
Lancaster	41,275	41,500	41,560	60	0.1%
Lavon	4,469	4,660	5,710	1,050	22.5%
Lewisville	111,822	113,620	132,620	19,000	16.7%
Little Elm	46,453	48,200	51,640	3,440	7.1%
Lowry Crossing	1,689	1,690	1,690	0	0%
Lucas	7,612	7,780	8,000	220	2.8%
Mabank	4,050	4,140	4,140	0	0%
McKinney	195,308	199,640	206,460	6,820	3.4%
McLendon-Chisholm	3,562	3,890	3,890	0	0%
Mansfield	72,602	74,750	77,040	2,290	3.1%
Melissa	13,901	16,070	18,030	1,960	12.2%
Mesquite	150,108	150,420	152,020	1,600	1.1%
Midlothian	35,125	36,470	37,580	1,110	3%
Mineral Wells	14,820	15,020	15,090	70	0.5%
Murphy	21,013	21,180	21,200	20	0.1%
Nevada	1,314	1,310	1,490	180	13.7%
Newark	1,096	1,100	1,100	0	0%
New Fairview	1,386	1,570	2,060	490	31.2%
Northlake	5,201	7,020	8,790	1,770	25.2%
North Richland Hills	69,917	71,000	71,600	600	0.8%
Oak Leaf	1,552	1,560	1,640	80	5.1%
Oak Point	4,357	4,520	5,000	480	10.6%
Ovilla	4,304	4,330	4,340	10	0.2%
Palmer	2,393	2,460	2,530	70	2.8%
Pantego	2,568	2,570	2,570	0	0%
Parker	5,462	5,670	5,730	60	1.1%
Pelican Bay	2,049	2,180	2,360	180	8.3%
Pilot Point	4,381	4,580	4,830	250	5.5%
Plano	285,494	287,400	290,850	3,450	1.2%
Ponder	2,442	2,450	2,450	0	0%
Princeton	17,027	18,410	21,760	3,350	18.2%
Prosper	30,174	32,320	35,410	3,090	9.6%
Providence Village	7,691	7,860	8,260	400	5.1%
Quinlan	1,414	1,430	1,450	20	1.4%
Red Oak	14,222	14,900	15,640	740	5%
Reno	2,878	3,080	3,250	170	5.5%
Rhome	1,630	1,680	1,690	10	0.6%
Rice	1,203	1,200	1,280	80	6.7%
Richardson	119,469	120,640	122,570	1,930	1.6%

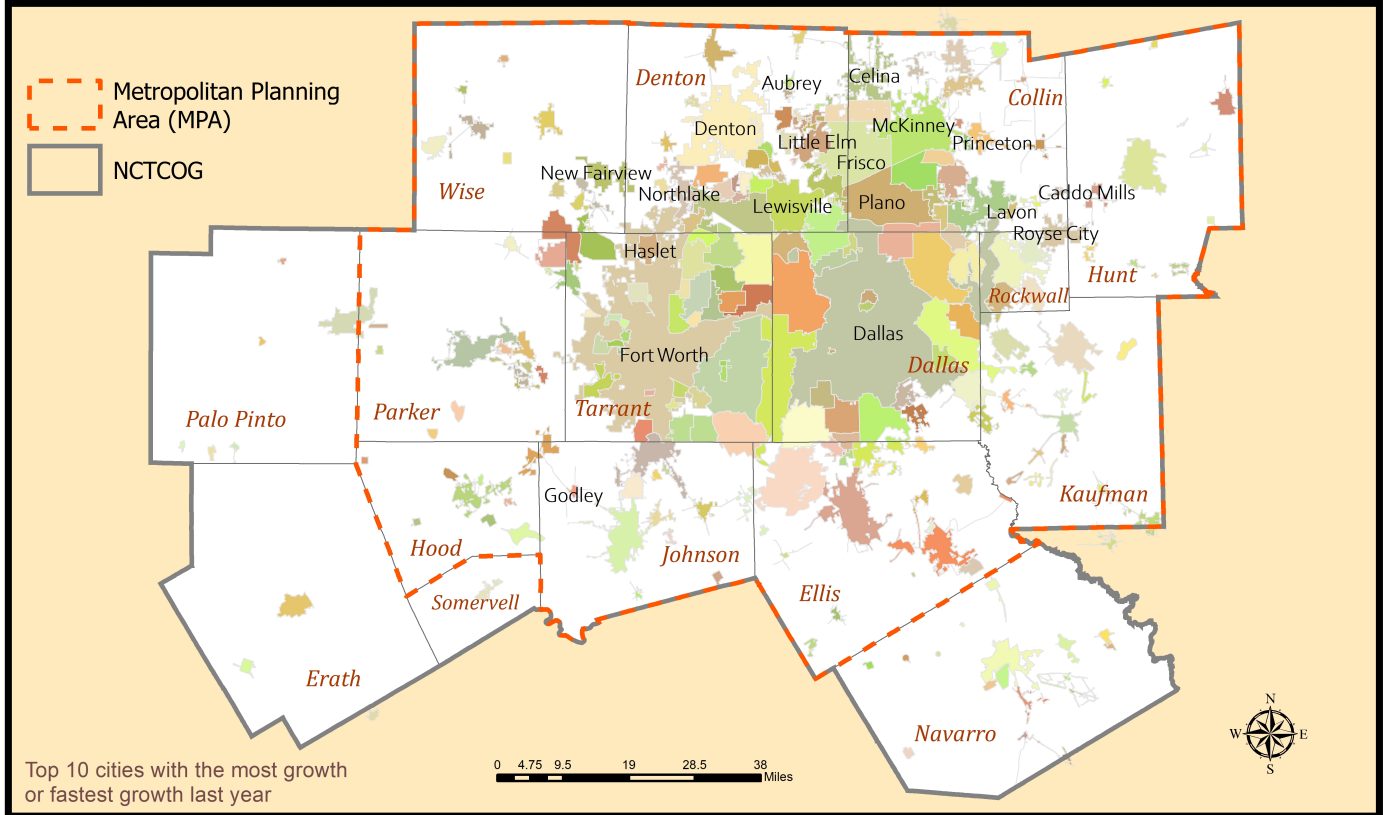
## 2022 City Population Estimates

Name	2020 Census Population April 1	2021 Estimate January 1	2022 Estimate January 1	2021 - 2022 Absolute Change	2021 - 2022 Percent Change
Richland Hills	8,621	8,640	8,630	-10	-0.1%
Rio Vista	1,008	1,010	1,010	0	0%
River Oaks	7,646	7,640	7,640	0	0%
Roanoke	9,665	9,770	9,830	60	0.6%
Rockwall	47,251	48,010	49,300	1,290	2.7%
Rowlett	62,535	64,180	65,030	850	1.3%
Royse City	13,508	15,720	18,810	3,090	19.7%
Runaway Bay	1,546	1,550	1,590	40	2.6%
Sachse	27,103	27,330	28,450	1,120	4.1%
Saginaw	23,890	24,420	24,450	30	0.1%
St. Paul	992	990	1,000	10	1%
Sanger	8,839	9,170	9,470	300	3.3%
Sansom Park	5,454	5,480	5,480	0	0%
Seagoville	18,446	18,950	19,580	630	3.3%
Shady Shores	2,764	2,770	2,770	0	0%
Southlake	31,265	31,660	31,770	110	0.3%
Springtown	3,064	3,210	3,310	100	3.1%
Stephenville	20,897	20,840	21,130	290	1.4%
Sunnyvale	7,893	7,940	8,540	600	7.6%
Talty	2,500	2,520	2,550	30	1.2%
Terrell	17,465	17,520	17,590	70	0.4%
The Colony	44,534	45,520	45,900	380	0.8%
Trophy Club	13,688	14,290	14,400	110	0.8%
University Park	25,278	25,310	25,360	50	0.2%
Venus	4,361	5,050	5,760	710	14.1%
Watauga	23,650	23,650	23,660	10	0%
Waxahachie	41,140	42,120	44,280	2,160	5.1%
Weatherford	30,854	31,180	31,690	510	1.6%
Westlake	1,623	1,780	1,840	60	3.4%
West Tawakoni	1,895	1,900	1,900	0	0%
Westworth Village	2,585	2,600	2,610	10	0.4%
White Settlement	18,269	18,340	18,430	90	0.5%
Willow Park	4,936	4,940	5,210	270	5.5%
Wilmer	4,974	6,100	6,690	590	9.7%
Wolfe City	1,399	1,400	1,400	0	0%
Wylie	57,526	59,220	60,460	1,240	2.1%

## 2022 County Population Estimates

Name	2020 Census Population April 1	2021 Estimate January 1	2022 Estimate January 1	2021 - 2022 Absolute Change	2021 - 2022 Percent Change
Collin	1,064,465	1,093,910	1,135,060	41,150	3.8%
Dallas	2,613,539	2,623,850	2,654,510	30,660	1.2%
Denton	906,422	926,830	950,660	23,830	2.6%
Ellis	192,455	198,970	207,620	8,650	4.3%
Erath	42,545	42,880	43,320	440	1%
Hood	61,598	61,600	62,120	520	0.8%
Hunt	99,956	101,660	104,900	3,240	3.2%
Johnson	179,927	185,560	193,500	7,940	4.3%
Kaufman	145,310	148,970	153,130	4,160	2.8%
Navarro	52,624	53,450	53,610	160	0.3%
Palo Pinto	28,409	28,720	28,780	60	0.2%
Parker	148,222	150,220	152,930	2,710	1.8%
Rockwall	107,819	112,850	119,900	7,050	6.2%
Somervell	9,205	9,420	9,660	240	2.5%
Tarrant	2,110,640	2,131,520	2,157,740	26,220	1.2%
Wise	68,632	69,190	69,740	550	0.8%

## NCTCOG Region



## 2022 Detailed Estimates for Multi-county Cities

Name	Total Population	Collin	Dallas	Denton	Ellis	Erath	Hood	Hunt	Johnson	Kaufman	Navarro	Palo Pinto	Parker	Rockwall	Somervell	Tarrant	Wise	Other
Azle	13,608	0	0	0	0	0	0	0	0	0	0	0	2,675	0	0	10,933	0	0
Burleson	50,207	0	0	0	0	0	0	0	41,020	0	0	0	0	0	0	9,187	0	0
Carrollton	135,108	672	52,317	82,119	0	0	0	0	0	0	0	0	0	0	0	0	0	0
Cedar Hill	50,277	0	49,599	0	678	0	0	0	0	0	0	0	0	0	0	0	0	0
Celina	25,241	22,299	0	2,942	0	0	0	0	0	0	0	0	0	0	0	0	0	0
Combine	2,302	0	878	0	0	0	0	0	0	1,424	0	0	0	0	0	0	0	0
Coppell	43,138	0	42,083	1,055	0	0	0	0	0	0	0	0	0	0	0	0	0	0
Cresson	1,349	0	0	0	0	0	717	0	111	0	0	0	521	0	0	0	0	0
Crowley	18,602	0	0	0	0	0	0	0	32	0	0	0	0	0	0	18,570	0	0
Dallas	1,321,737	51,915	1,241,271	28,542	0	0	0	0	0	5	0	0	0	4	0	0	0	0
Ferris	3,069	0	1	0	3,068	0	0	0	0	0	0	0	0	0	0	0	0	0
Flower Mound	78,573	0	0	76,971	0	0	0	0	0	0	0	0	0	0	0	1,602	0	0
Fort Worth	955,902	0	0	21,581	0	0	0	0	0	0	0	0	3,232	0	0	931,061	28	0
Frisco	217,469	130,003	0	87,466	0	0	0	0	0	0	0	0	0	0	0	0	0	0
Garland	247,590	162	247,426	0	0	0	0	0	0	0	0	0	0	2	0	0	0	0
Glenn Heights	18,088	0	11,320	0	6,768	0	0	0	0	0	0	0	0	0	0	0	0	0
Grand Prairie	199,778	0	127,429	0	480	0	0	0	0	0	0	0	0	0	0	71,869	0	0
Grapevine	51,998	0	0	0	0	0	0	0	0	0	0	0	0	0	0	51,998	0	0
Haslet	2,732	0	0	0	0	0	0	0	0	0	0	0	0	0	0	2,732	0	0
Heath	9,886	0	0	0	0	0	0	0	0	196	0	0	0	9,690	0	0	0	0
Josephine	2,287	2,257	0	0	0	0	0	30	0	0	0	0	0	0	0	0	0	0
Lewisville	132,616	0	1,309	131,307	0	0	0	0	0	0	0	0	0	0	0	0	0	0
Mabank	4,140	0	0	0	0	0	0	0	0	2,869	0	0	0	0	0	0	0	1,271
McLendon-Chisholm	3,886	0	0	0	0	0	0	0	0	0	0	0	0	3,886	0	0	0	0
Mansfield	77,041	0	0	0	829	0	0	0	7,575	0	0	0	0	0	0	68,637	0	0
Mesquite	152,020	0	151,857	0	0	0	0	0	0	163	0	0	0	0	0	0	0	0
Mineral Wells	15,091	0	0	0	0	0	0	0	0	0	0	14,917	174	0	0	0	0	0
Newark	1,096	0	0	0	0	0	0	0	0	0	0	0	0	0	0	0	1,096	0
New Fairview	2,064	0	0	110	0	0	0	0	0	0	0	0	0	0	0	0	1,954	0
Ovilla	4,338	0	302	0	4,036	0	0	0	0	0	0	0	0	0	0	0	0	0
Pilot Point	4,829	0	0	4,829	0	0	0	0	0	0	0	0	0	0	0	0	0	0
Plano	290,847	285,186	0	5,661	0	0	0	0	0	0	0	0	0	0	0	0	0	0
Prosper	35,414	27,124	0	8,290	0	0	0	0	0	0	0	0	0	0	0	0	0	0
Reno	3,253	0	0	0	0	0	0	0	0	0	0	0	3,233	0	0	20	0	0
Richardson	122,574	42,822	79,752	0	0	0	0	0	0	0	0	0	0	0	0	0	0	0
Roanoke	9,830	0	0	9,830	0	0	0	0	0	0	0	0	0	0	0	0	0	0
Rowlett	65,031	0	57,510	0	0	0	0	0	0	0	0	0	0	7,521	0	0	0	0
Royse City	18,813	2,359	0	0	0	0	0	3,090	0	0	0	0	0	13,364	0	0	0	0
Sachse	28,453	10,534	17,919	0	0	0	0	0	0	0	0	0	0	0	0	0	0	0
Sanger	9,471	0	0	9,471	0	0	0	0	0	0	0	0	0	0	0	0	0	0
Seagoville	19,576	0	19,551	0	0	0	0	0	0	25	0	0	0	0	0	0	0	0
Southlake	31,769	0	0	741	0	0	0	0	0	0	0	0	0	0	0	31,028	0	0
Springtown	3,310	0	0	0	0	0	0	0	0	0	0	0	3,310	0	0	0	0	0
Trophy Club	14,397	0	0	13,709	0	0	0	0	0	0	0	0	0	0	0	688	0	0
Venus	5,762	0	0	0	686	0	0	0	5,076	0	0	0	0	0	0	0	0	0
Westlake	1,842	0	0	3	0	0	0	0	0	0	0	0	0	0	0	1,839	0	0
Wylie	60,459	57,343	1,674	0	0	0	0	0	0	0	0	0	0	1,442	0	0	0	0

Although split city boundaries cross county lines, some split cities may have population in only one county.

## 2022 Population By Planning Area

Region	2020 Census Population April 1	2021 Estimate January 1	2022 Estimate January 1	2021 - 2022 Absolute Change	2021 - 2022 Percent Change
16 County NCTCOG Region	7,831,768	7,939,600	8,097,170	157,570	2%
12 County MPA	7,698,985	7,805,140	7,961,800	156,660	2%

### 2022 Population Estimates Methodology

NCTCOG uses the housing unit method for estimating current year population:

**Estimated household population = estimated units \* estimated occupancy rate \* estimated persons per occupied unit**

The calculation is performed for each unit type (single family, multi-family, other). The results are summed along with an estimate of group quarters population to arrive at a total population estimate. Every year, cities are asked to provide information about changes in housing stock and population in group quarters housing. Cities are also given the opportunity to review figures prior to release. Kennedale did not participate in the survey. The 2021 population estimates for some cities have been revised. The estimates included herein supersede any prior estimates.

Various totals and percentages provided throughout this report are calculated on rounded figures and therefore might not match precise sums and percentages calculated on unrounded figures.

NCTCOG Population Estimates and other data can be found on the Regional Data Center: <https://data-nctcogis.opendata.arcgis.com/>.

**Disclaimer:** There are a variety of ways to estimate population for a given area. The North Central Texas Council of Governments has selected a method that accommodates the varying level of data available for local communities while focusing on consistency. These estimates were developed for regional planning activities and have not been evaluated for other uses. They are provided as an informational item and are likely to differ from estimates produced by others, including the cities and counties listed herein. The North Central Texas Council of Governments makes no warranty, express or implied, including warranties of merchantability and fitness for a particular purpose. Responsibility for the use of these data lies solely with the user.

### Research and Information Services

NCTCOG's Research and Information Services (RIS) Department provides objective, consistent, and timely information and analysis on development in the region for use in regional and local planning and economic development activities. The substantive focus is on population, employment, and other socio-economic factors; commercial and residential development; and land use. The department also provides support to a regional Geographic Information System (GIS) and NCTCOG's internal computer network. To learn more about regional data initiatives within RIS, visit: <https://www.nctcog.org/regional-data>.

### North Central Texas Council of Governments

The North Central Texas Council of Governments (NCTCOG) is a voluntary association of, by, and for local governments, and was established to assist local governments in planning for common needs, cooperating for mutual benefit, and coordinating for sound regional development. NCTCOG's purpose is to strengthen both the individual and collective power of local governments and to help them recognize regional opportunities, eliminate unnecessary duplication, and make joint decisions. To learn more about NCTCOG, please visit <https://www.nctcog.org/>.

© 2022 North Central Texas Council of Governments (NCTCOG). All rights reserved. This data is the property of NCTCOG and may not be sold, reproduced, distributed or displayed without NCTCOG's express written consent.



North Central  
Texas COG  
PO Box 5888  
Arlington, TX  
76005  
[www.nctcog.org](http://www.nctcog.org)