

LifePath Systems Bloomdale Campus

Total Square Feet of Facility = 110,000

- Lower level = 10,000 SF
- 1st level = 40,000 SF
- 2nd level = 30,000 SF
- 3rd level = 30,000 SF

Programming in Facility

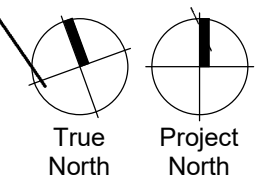
- Public Meeting Space
- Mental Health Crisis Center and Outpatient Services
- Intellectual & Developmental Disabilities Services
- Executive Offices, Human Resources, Compliance, etc.
- Shell Space for future growth (11,510 SF)

Project Timeline

- September 2022 – Architect & Engineering Selected
- December 2022 – Construction Manager-at-Risk Selected
- February 2023 – Schematic Design Documents Due
- April 2023 – Final Elevations to be Approved
- June 2023 – Construction Site Utilities/Grading to Start
- August 2023 – Final Construction Documents to be Issued
- October 2024 – Construction Complete

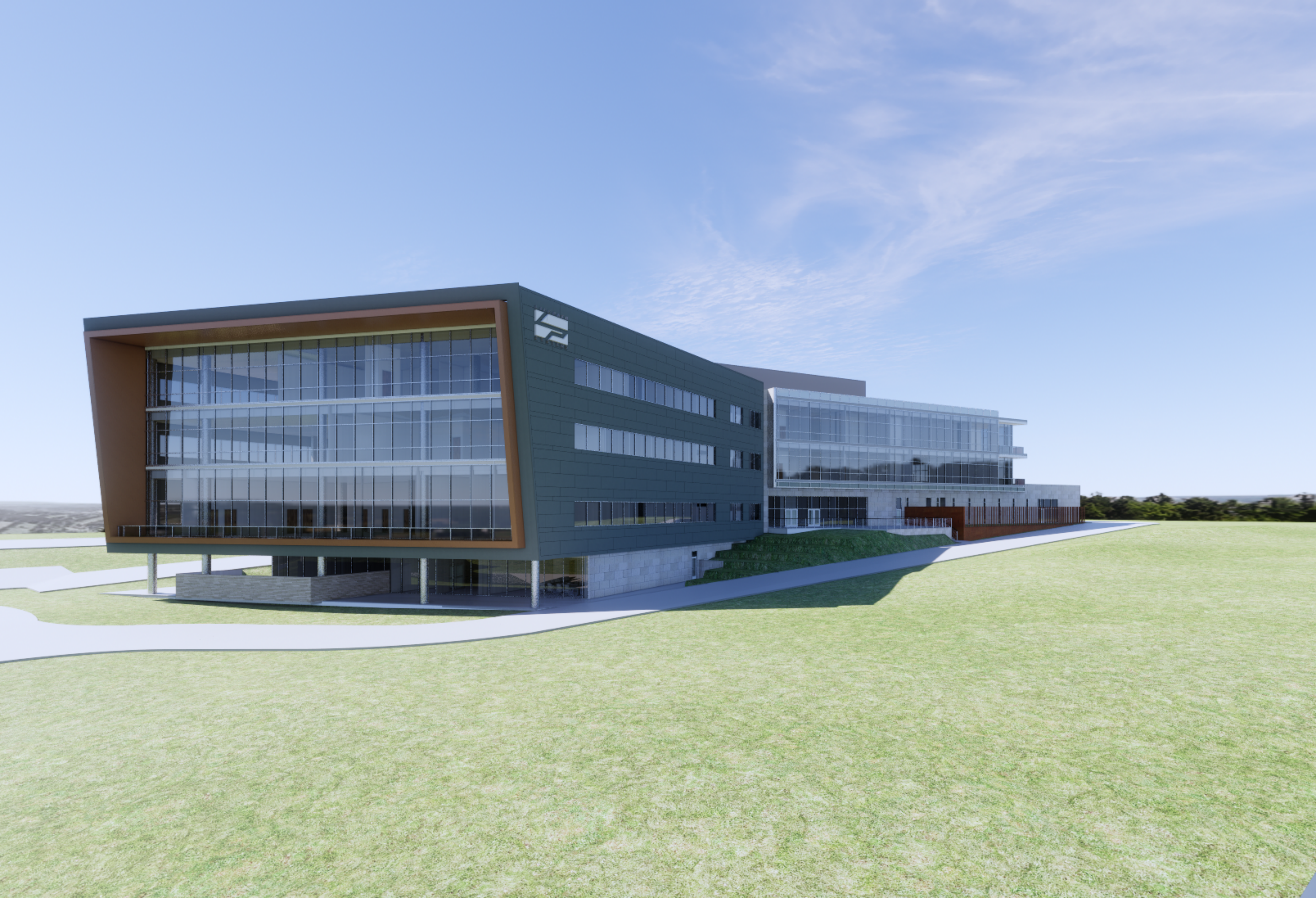


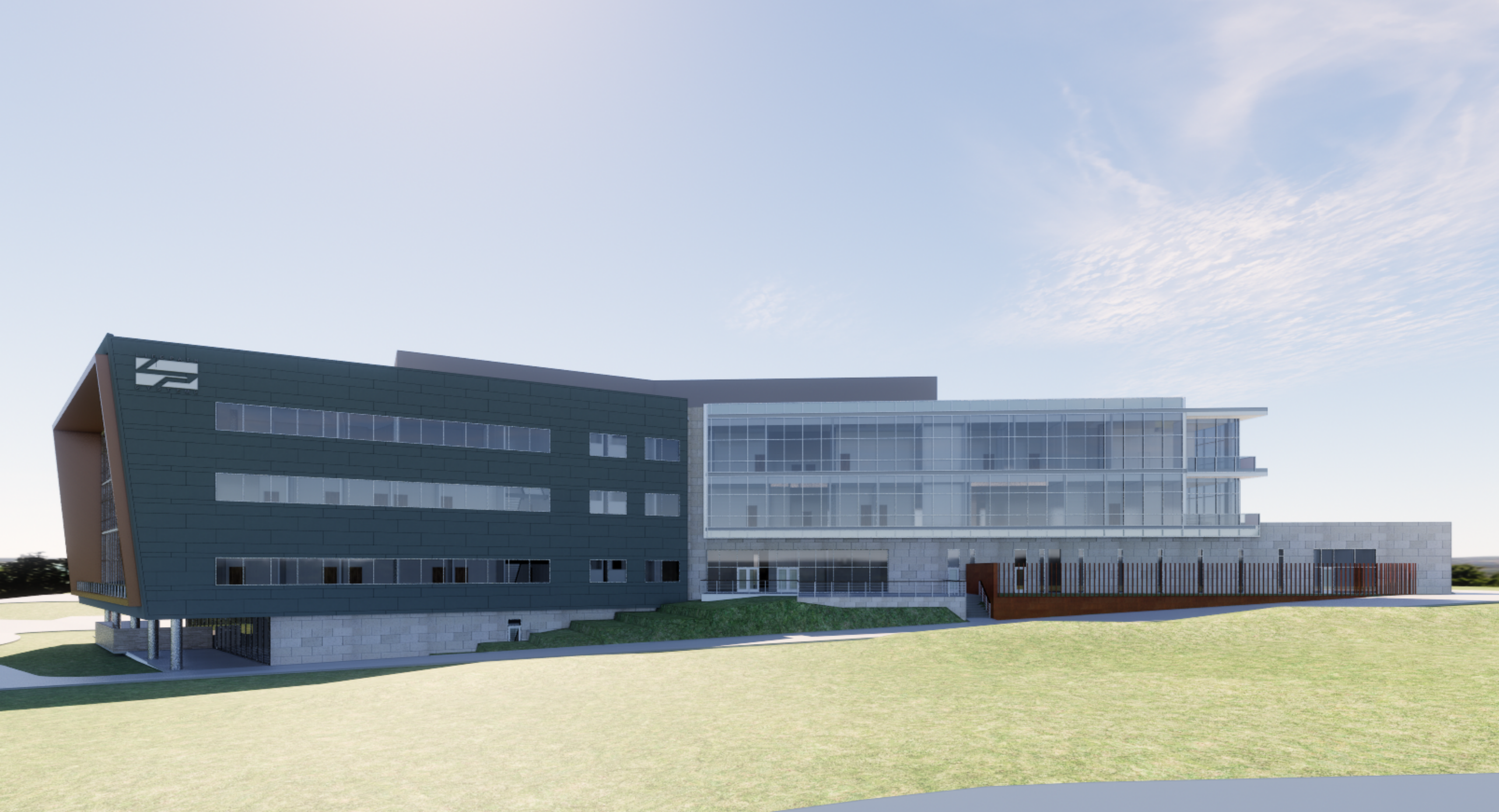
1 SITE PLAN
SCALE: 1" = 50'-0"



LIFEPATH CAMPUS

PROGRAMMING









LIFEPATH SYSTEMS

