

**BIRKHOFF, HENDRICKS & CARTER, L.L.P.**  
**PROFESSIONAL ENGINEERS**

11910 Greenville Ave., Suite 600

Dallas, Texas 75243

Phone (214) 361-7900

www.bhcllp.com

JOHN W. BIRKHOFF, P.E.  
GARY C. HENDRICKS, P.E., R.P.L.S.  
JOE R. CARTER, P.E.  
MATT HICKEY, P.E.  
ANDREW MATA, JR., P.E.

DEREK B. CHANEY, P.E., R.P.L.S.  
CRAIG M. KERKHOFF, P.E.  
JUSTIN R. IVY, P.E.  
JULIAN T. LE, P.E.  
COOPER E. REINBOLD, P.E.

January 25, 2023

Mr. Clarence T. Daugherty, P.E.  
County Engineer  
Collin County  
4690 Community Ave., Suite 200  
McKinney, TX 75071

RE: Frontier Parkway Engineering Services Agreement  
Collin County Contract No. 2016-229  
Collin County Purchase Order No. 199212  
Amendment No. 15 – Added Left Turn Storage Bays (for City of Celina)

Dear Mr. Daugherty:

As requested by the City of Celina, we are pleased to submit Amendment No. 15 to our Engineering Services Agreement with Collin County dated Sept. 27, 2016 (Collin County Purchase Order No. 199212) for the design of Frontier Parkway, from the Dallas North Tollway (DNT) to S.H. 289 (Collin County Contract No. 2016-229).

This Amendment No. 15 makes the following changes to the scope and fee in the original agreement, as amended through Amendment No. 14:

**NEW SCOPE ITEM D.11: Two (2) Added Left Turn Storage Bays – (Celina) (\$12,000 - Lump Sum):**

During the construction phase of Frontier Parkway Paving and Drainage Improvements, the City of Celina has requested two (2) left turn storage bays to be added to the project as shown on Exhibit A and Exhibit B to this amendment. This Amendment No. 15 provides for the additional scope of services:

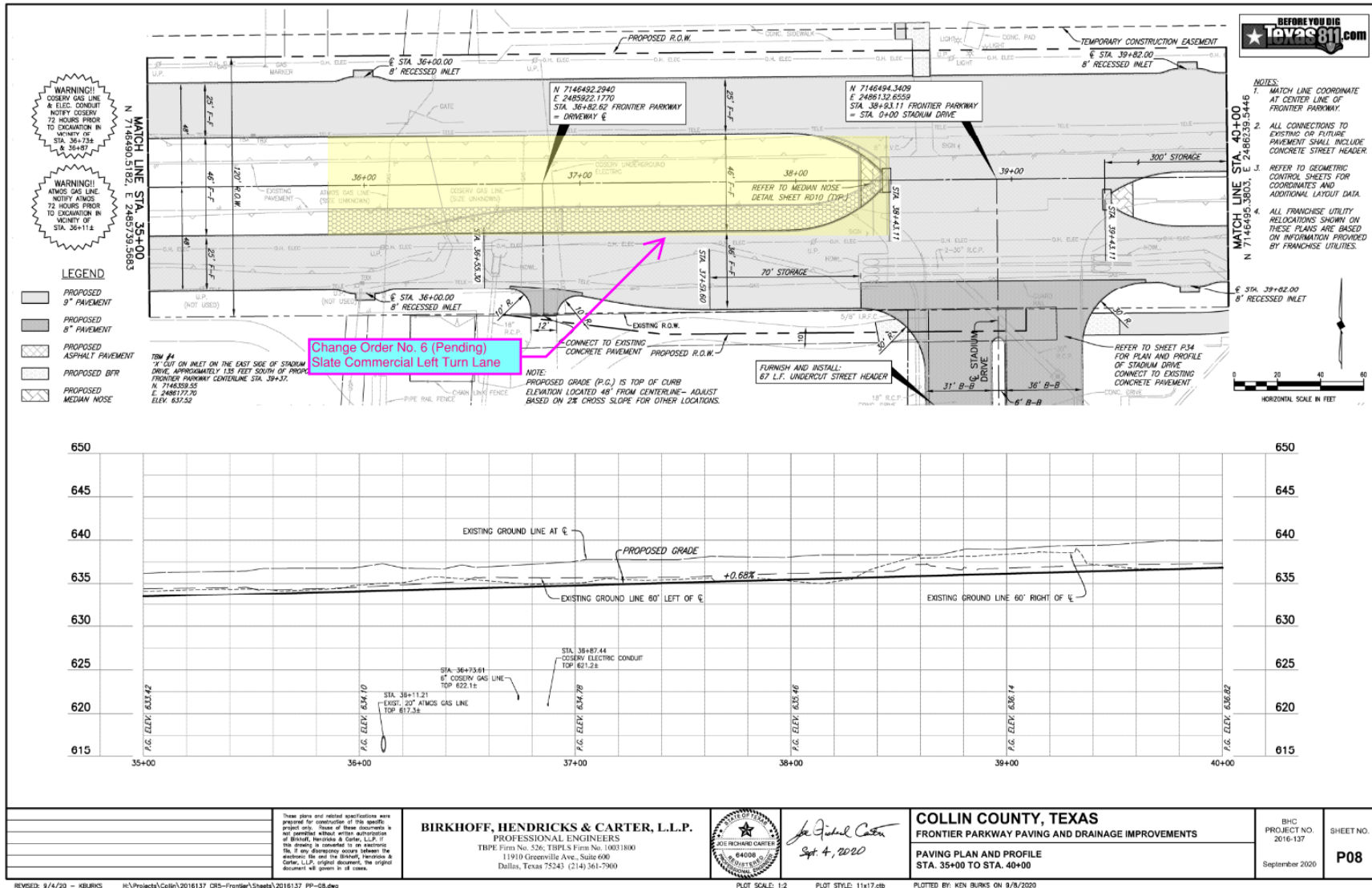
1. Design effort required to modify the plans for the two added left turn storage bays.
2. Revised Pavement Marking Plans.
3. Estimate the new quantities for the required plan changes.
4. Prepare the construction contract change order.
5. Additional Construction Administration effort.

**Exhibit A:** Slate Commercial Development – New Left Turn Storage Bay Concept Layout

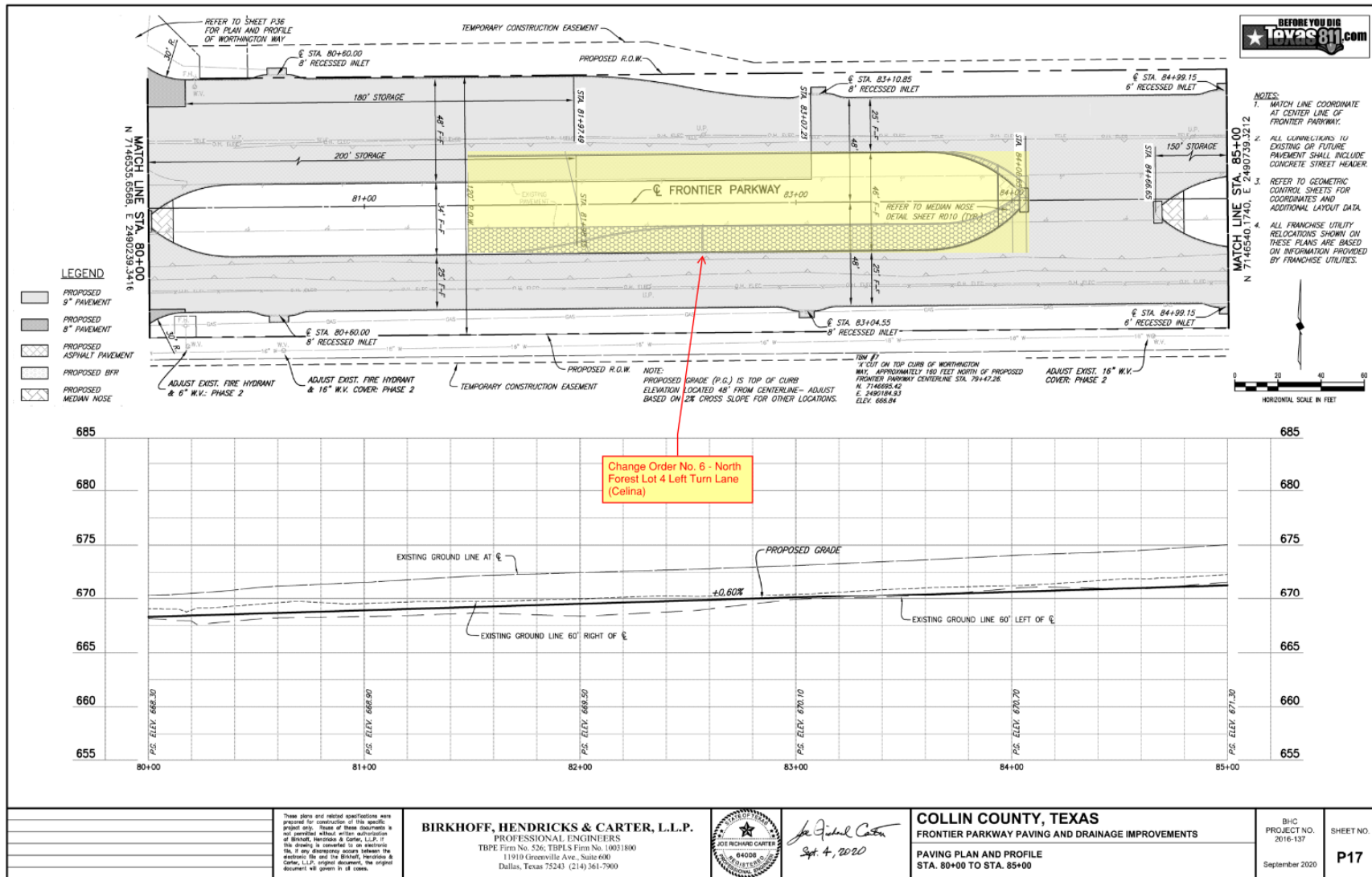
**Exhibit B:** North Forest Development, Lot 4 – New Left Turn Storage Bay Concept Layout



**EXHIBIT A**  
 Slate Commercial Development  
 New Left Turn Storage Bay Concept Layout



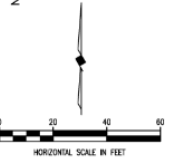
**EXHIBIT B**  
 North Forest Lot 4 Development  
 New Left Turn Storage Bay Concept Layout



Change Order No. 6 - North Forest Lot 4 Left Turn Lane (Celina)



- NOTES:**
1. MATCH LINE COORDINATE AT CENTER LINE OF FRONTIER PARKWAY.
  2. ALL CURB/LEDGES IN EXISTING OR FUTURE PAVEMENT SHALL INCLUDE CONCRETE STREET HEADER.
  3. REFER TO GEOMETRIC CONTROL SHEETS FOR COORDINATES AND ADDITIONAL LAYOUT DATA.
  4. ALL FRANCHISE UTILITY RELOCATIONS SHOWN ON THESE PLANS ARE BASED ON INFORMATION PROVIDED BY FRANCHISE UTILITIES.



**NOTE:** PROPOSED GRADE (P.G.) IS TOP OF CURB ELEVATION LOCATED 48' FROM CENTERLINE - ADJUST BASED ON 2% CROSS SLOPE FOR OTHER LOCATIONS.

**TOU #1** X-CUT ON TOP CURB OF WORTHINGTON WAY, APPROXIMATELY 180 FEET NORTH OF PROPOSED FRONTIER PARKWAY CENTERLINE STA. 79+47.26  
 N. 714695.42  
 E. 2490759.32  
 ELEV. 688.84

ADJUST EXIST. 16" W.V. COVER, PHASE 2

These plans and related specifications were prepared for construction of the specific project only. None of these documents is intended to be used for any other project. If any discrepancy occurs between the electronic file and the original document, the original document will govern in all cases.

**BIRKHOFF, HENDRICKS & CARTER, L.L.P.**  
 PROFESSIONAL ENGINEERS  
 TBPE Firm No. 526; TBPLS Firm No. 10021800  
 11919 Greenville Ave., Suite 400  
 Dallas, Texas 75243 (214) 361-7900



*Richard Carter*  
 Sept. 4, 2020

**COLLIN COUNTY, TEXAS**  
 FRONTIER PARKWAY PAVING AND DRAINAGE IMPROVEMENTS  
 PAVING PLAN AND PROFILE  
 STA. 80+00 TO STA. 85+00

BHC PROJECT NO. 2016-137  
 SHEET NO. **P17**  
 September 2020

**Exhibit “C”  
 Engineering Service Fee Schedule – Amendment No. 15**

Engineering Service Agreement Phase			Contract Amounts (\$)		
			Contract Amount Through Amendment No. 14	This Amendment No. 15	Revised Contract Amount, this Amendment No. 15
<b>A. Basic Services Parts I - III (Lump Sum)</b>	Part I. A.	Schematic Design	\$165,000		\$165,000
	Part I.B.	Final Design	\$1,279,340		\$1,279,340
	Part I.C.	Full Bridge Width Design with Alternate Bid for 4-lane Bridge	\$120,700		\$120,700
	Part I.D.	PISD Detention Pond Design	\$25,992		\$25,992
	Part I.E.	Prairie Crossing Road Design Phase	\$97,360		\$97,360
	Part I.E.a.	Prairie Crossing Road Bid Phase	\$0		\$0
	Part I.E.b.	Prairie Crossing Road Construction Phase	\$0		\$0
	Part I.F.	Traffic Signal Design at DNT and Preston Road	\$30,000		\$30,000
	Part I.G.	Temporary and Permanent Traffic Signal Design at Worthington and Victory Way	\$40,000		\$40,000
	Part II	Bidding Phase	\$31,750		\$31,750
	Part III	Construction Administration	\$281,750		\$281,750
	<b>Subtotal - Basic Services (Part A)</b>			<b>\$2,071,892</b>	<b>\$0</b>
<b>B. Additional Services (Hourly)</b>	1	Field Surveys (Design, Property and Construction Support):	\$63,040		\$63,040
	2	R-O-W Map, Plats and Field Notes Descriptions (16 each):	\$79,247		\$79,247
	3	Geotechnical Investigation and Report:	\$80,326		\$80,326
	4	Flood Study:	\$28,120		\$28,120
	5	NCTCOG Environmental Form:	\$27,700		\$27,700
	6	404 Permit Application (Nationwide Permit 14):	\$38,751		\$38,751
	7	Permits (TxDOT, BNSF) and Utility Relocation Coordination:	\$89,500		\$89,500
	8	Asbestos Evaluation (4 Buildings):	\$2,215		\$2,215
	9	Project Stakeholder Design Meetings	\$50,176		\$50,176
	10	Attend Twenty(20) Additional Progress Meetings:	\$21,000		\$21,000
	11	Additional Printing of Construction Plans and Specifications:	\$5,000		\$5,000
	12	Revised Schematic Layouts, Drainage Evaluations, Cost Estimates and Coordination Meetings	\$20,870		\$20,870
	13a.	Doe Branch Tributary C Hydraulic Evaluations and Report	\$30,859		\$30,859
	13b.	Revised Flood Study for Detention Pond Design	\$8,636		\$8,636
	14	PISD Detention Pond Replat	\$15,000		\$15,000
15	Level A Sub-Surface Utility Locates	\$4,100		\$4,100	
<b>Subtotal Additional Services (Part B)</b>			<b>\$564,540</b>	<b>\$0</b>	<b>\$564,540</b>

**Exhibit “C” (Continued)**  
**Engineering Service Fee Schedule – Amendment No. 15**

Engineering Service Agreement Phase			Contract Amounts (\$)		
			Contract Amount Through Amendment No. 14	This Amendment No. 15	Revised Contract Amount, this Amendment No. 15
C. Optional Services (Hourly)	1	Traffic Signal Warrant Study	\$0		\$0
	2	Street Lighting Design	\$16,000		\$16,000
	3	Full Irrigation Design Plans and Specifications	\$0		\$0
	3a	Irrigation and Lighting Conduit Sleeves Only	\$5,000		\$5,000
	4	Sidewalks and Barrier Free Ramps (TDLR \$2,085 fee Included)	\$23,500		\$23,500
	5	On-site Observation of Construction Activity	\$0		\$0
	6a	Project Visualization - Final Design Only	\$28,750		\$28,750
	6b	Project Visualization - Construction Phases	\$14,100		\$14,100
	<b>Subtotal Optional Services (Part C)</b>			<b>\$87,350</b>	<b>\$0</b>

D. New Developer Initiated Driveways, Median Openings and Left Turn Lanes (LUMP SUM)	1	(Reserved for Mosey Tract - Celina)	\$0		\$0
	2	Light Farms Laurel and Bartlett Phase I (Celina)	\$8,625		\$8,625
	3	Frontier Crossing (Celina)	\$5,750		\$5,750
	4	Reserved for Prose Frontier 51 -Bg-Gbt Celina 15LP (Celina)	\$0		\$0
	5	The Grove (Celina)	\$13,725		\$13,725
	6	(Reserved for Metten Tract - Proseper)	\$0		\$0
	7	(Reserved for Frisco Tollway Partners - Prosper)	\$0		\$0
	8	Victory at Frontier (Prosper)	\$4,600		\$4,600
	9	7-Eleven (Prosper)	\$5,750		\$5,750
	10	All Storage Driveway Shift (47-foot east) (Celina)	\$14,750		\$14,750
	11	Two (2) Added Left Turn Storage Bays (Celina)	\$0	\$12,000	\$12,000
<b>Subtotal - New Driveways and Median Openings (Part D)</b>			<b>\$53,200</b>	<b>\$12,000</b>	<b>\$65,200</b>
<b>Engineering Services Agreement Grand Total:</b>			<b>\$2,776,982</b>	<b>\$12,000</b>	<b>\$2,788,982</b>