

# County Road 557

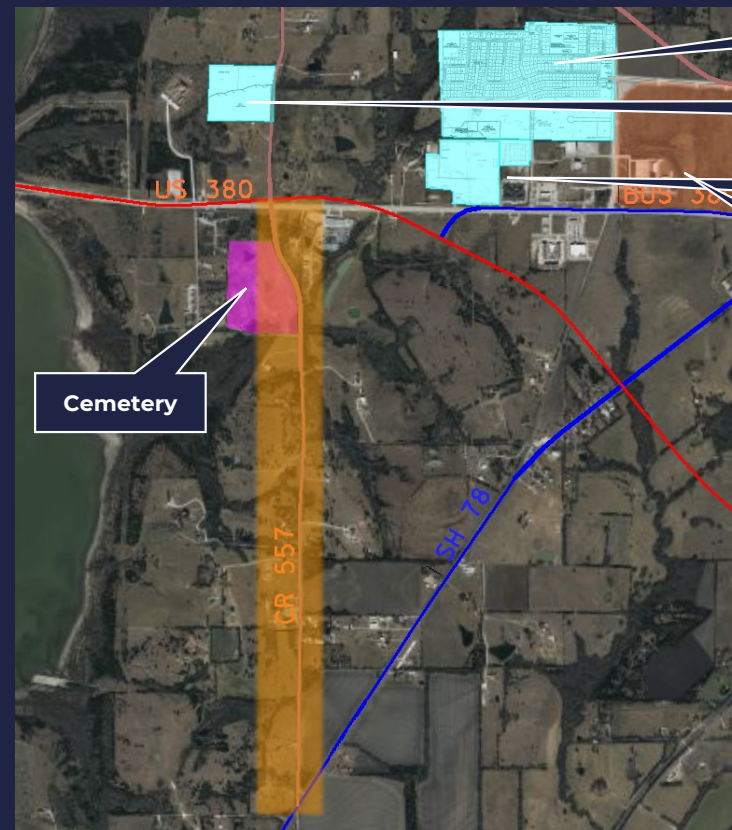
## from SH 78 to US 380

### Current Condition

- Length: 1.7 miles / Existing ROW width: 60 feet
- 2 lanes with poor pavement condition, inadequate drainage, and unsafe tight curves
- Traffic Volume: 1,681 vehicles per day (year 2014)

### Proposed Improvement

- On Thoroughfare Plan; major connector of US 380 and SH 78
- Project would include the construction of the first 2 lanes and turn lanes of ultimate 4-lane divided thoroughfare
- Proposed ROW width: 100 feet
- Buildout Year Volume: 14,000 vehicles per day (year N/A)
- Est. Construction Cost: \$8.7M (does not include ROW cost)



New Subdivision

Planned Development

Planned Development

Collin College Farmersville Campus

Cemetery

