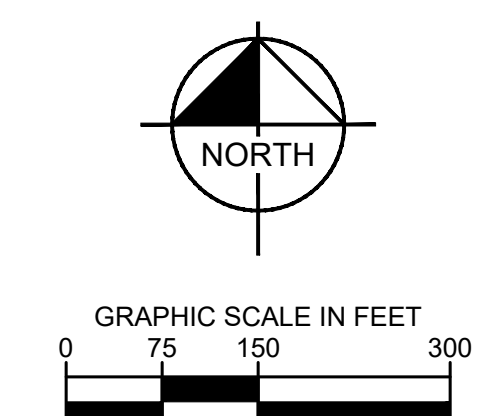
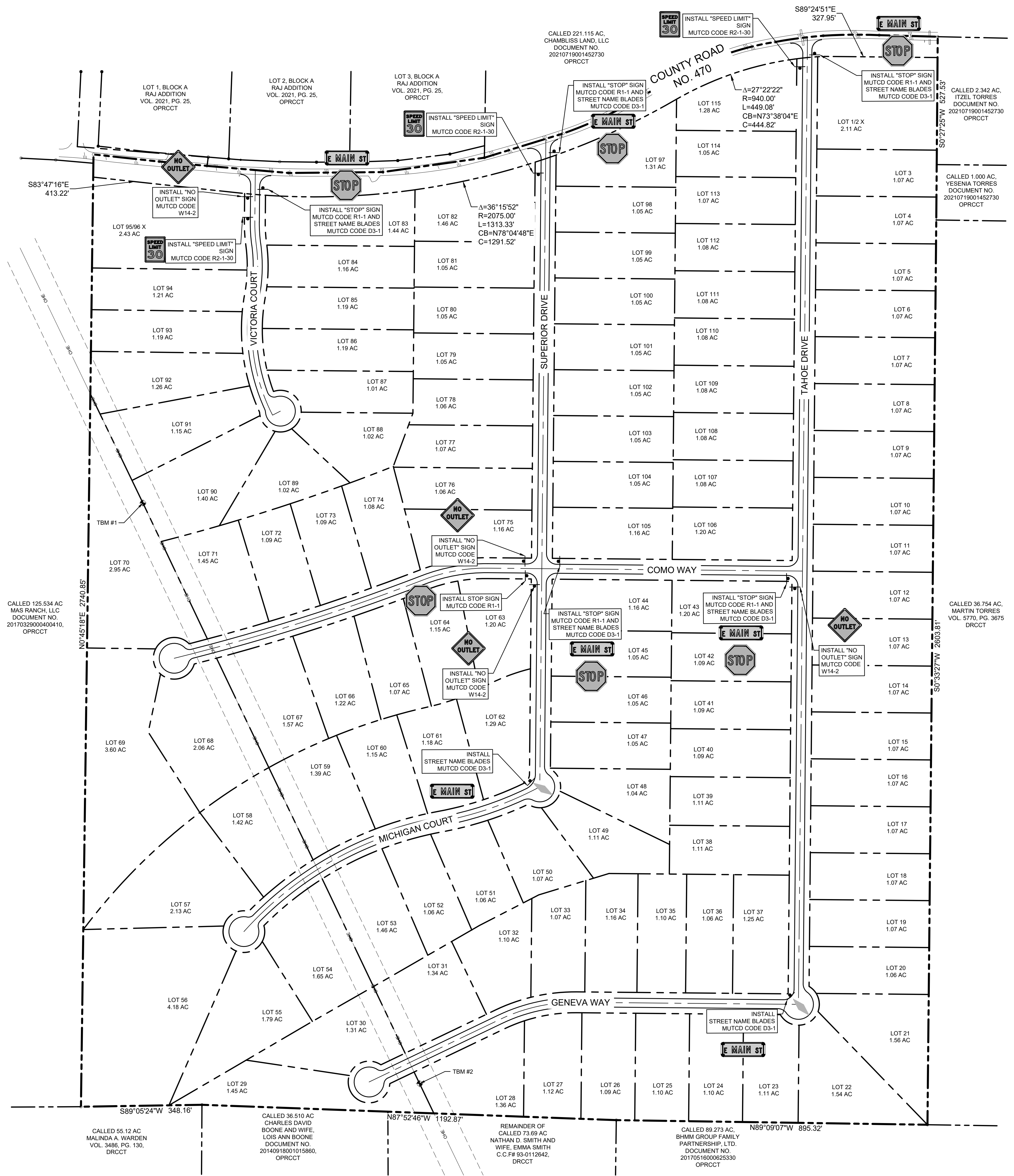


DATE: 12/01/2022 12:28 PM
 LAST SAID: 12/01/2022 12:28 PM
 DRAWN BY: KIMLEY-HORN AND ASSOCIATES, INC.
 CHECKED BY: N/A

This document, together with the concepts and designs presented herein, is an instrument of service, is intended only for the specific purpose and client for which it was prepared. Release of and improper reliance on this document without written authorization and indemnification by Kimley-Horn and Associates, Inc. shall be without liability to Kimley-Horn and Associates, Inc.



NO.	REVISIONS	DATE	BY

Kimley-Horn
 © 2022 KIMLEY-HORN AND ASSOCIATES, INC.
 260 EAST DAVIS STREET, SUITE 100, MCKINNEY, TX 75069
 PHONE: 469-301-2560 FAX: 972-239-8820
 WWW.KIMLEY-HORN.COM TX F-928

PRELIMINARY
 FOR REVIEW ONLY
 Not for construction or permit purposes.
Kimley-Horn
 Engineer: ERIC T. JESKE
 P.E. No. 130229 Date: DECEMBER 2022

KHA PROJECT	063239611
DATE	DECEMBER 2022
SCALE	AS SHOWN
DESIGNED BY	N/A
DRAWN BY	HAB
CHECKED BY	ETJ

RAINTREE SUBDIVISION
 COLLIN COUNTY, TX
 PREPARED FOR:
FK LAND INVESTMENT, LLC.

SIGNAGE PLAN
 SHEET NUMBER
C-34

BENCH MARK LIST
 TBM#1: "X" CUT SET IN THE CONCRETE BASE OF A METAL MONO POLE, BEING APPROXIMATELY 1005.5' SOUTH OF AND 143' EAST OF A RAILROAD SPIKE FOUND FOR THE NORTHWESTERLY CORNER OF THE LOT.
 ELEV. = 606.73'
 TBM#2: "X" CUT SET IN THE CONCRETE BASE OF A METAL MONO POLE, BEING APPROXIMATELY 2673.4' SOUTH OF AND 940' EAST OF A RAILROAD SPIKE FOUND FOR THE NORTHWESTERLY CORNER OF THE LOT.
 ELEV. = 571.48'

