

Growth within Collin County has resulted in four (4) voting precincts that exceed the maximum number of registered voters allowed in a voting precinct. Section 42.006(a) of the Texas Election Code prohibits voting precincts from containing more than 5,000 registered voters. Per Section 42.006(e), in computing a number of registered voters under this section, voters whose names appear on the list of registered voters with the notation "S", or a similar notation, shall be excluded.

The following four precincts will be split. Voting precinct changes will be effective January 1, 2024.

Old Precinct	Active Voters	New Precinct	Commissioner Dist.
172	5831	249	3
212	5576	250	3
216	6007	251	3
240	5882	252	1

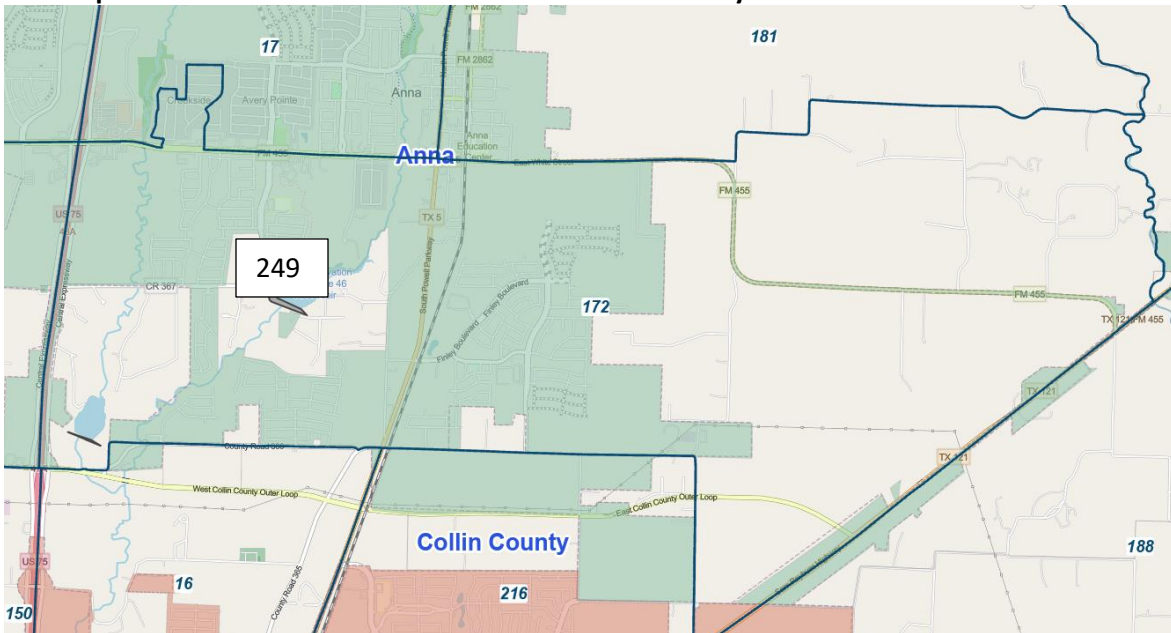
PROPOSED 2023 Splits – Effective 1/1/2024

Precinct: 172/249

Active Voters: 5,831 (as of 8/7/23)
City: Anna, Melissa, Unincorporated
ISD: Anna, Melissa
ETJ: Anna
Zip: 75409

SUD: North Collin SUD
Commissioners: District 3 – D. Hale
JP Districts: JP1 – P. Raleeh
Constables: District 1 – M. Carpenter
TX House: 67
TX School Board: 12
TX Senate: 8
US House(Congress): 3

Possible Split: current city boundary line,
OR North to South FM 455, slight West on County Road 419 North to South, stopping at E. Foster Crossing Rd.
FINAL Split: North to South on TX 5 or South Powell Parkway

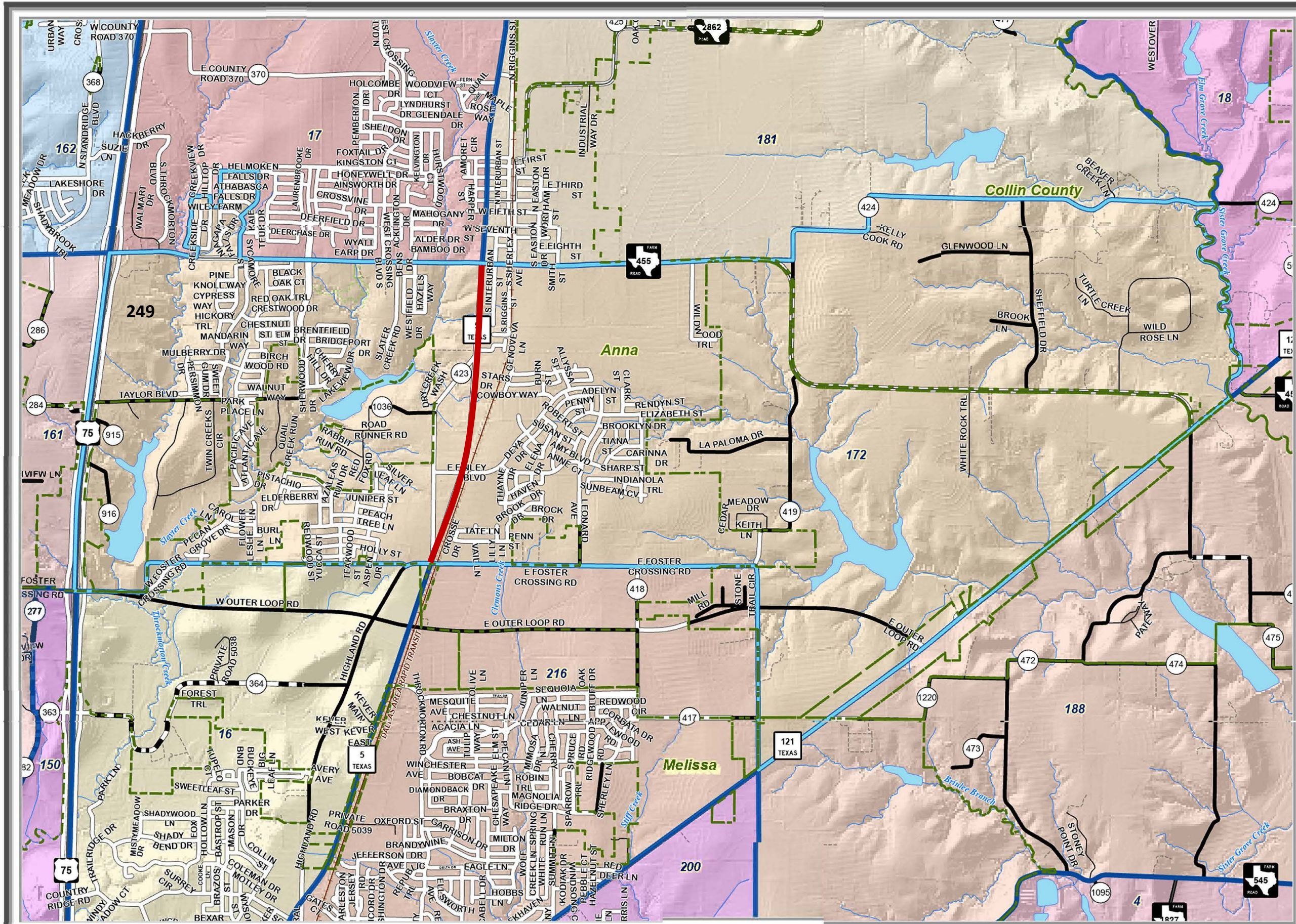


172

City: Anna, Melissa, Unincorporated
ISD: Anna, Melissa
ETJ: Anna
Zip: 75409
SUD: North Collin SUD

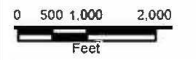
249

City: Anna, Unincorporated
ISD: Anna
ETJ: Anna
Zip: 75409
SUD: North Collin SUD



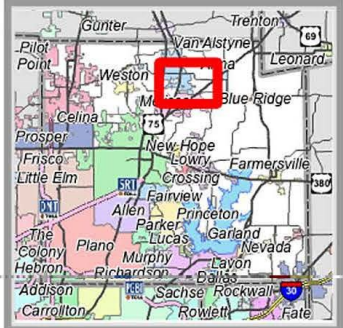
IT/GIS

**Collin County
Elections
Precinct
172**



Legend

- Precincts
- Selected Precincts
- Cities
- County Boundaries
- County Parks
- Paved
- Rock
- Dirt
- Private
- City
- Railroads



Source data is compiled from the Collin County GIS Database, aerial photography (2021), digital data from cities and various maps throughout Collin County.

This map is a graphic representation of Collin County and should only be used for illustrative purposes. In no way should this map be used to settle any boundary dispute or locational conflict.

1/7/2022

Precinct: 212/250

Active Voters: 5,576 (as of 8/7/23)

City: Frisco

ISD: Frisco

ETJ: N/A

Zip: 75035

Commissioners: District 3 – D. Hale

JP Districts: JP4 – V. Venegoni

Constables: District 4 – J. Wright

TX House: 61

TX School Board: 12

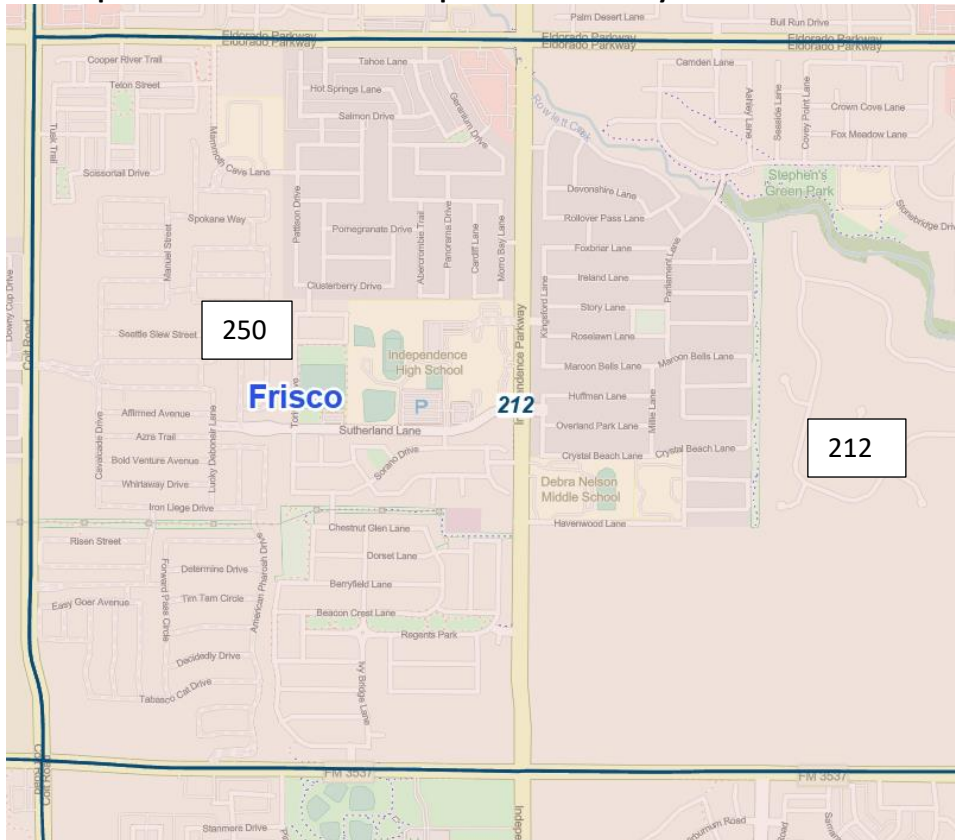
TX Senate: 30

US House(Congress): 4

Split 212/225 in 2018

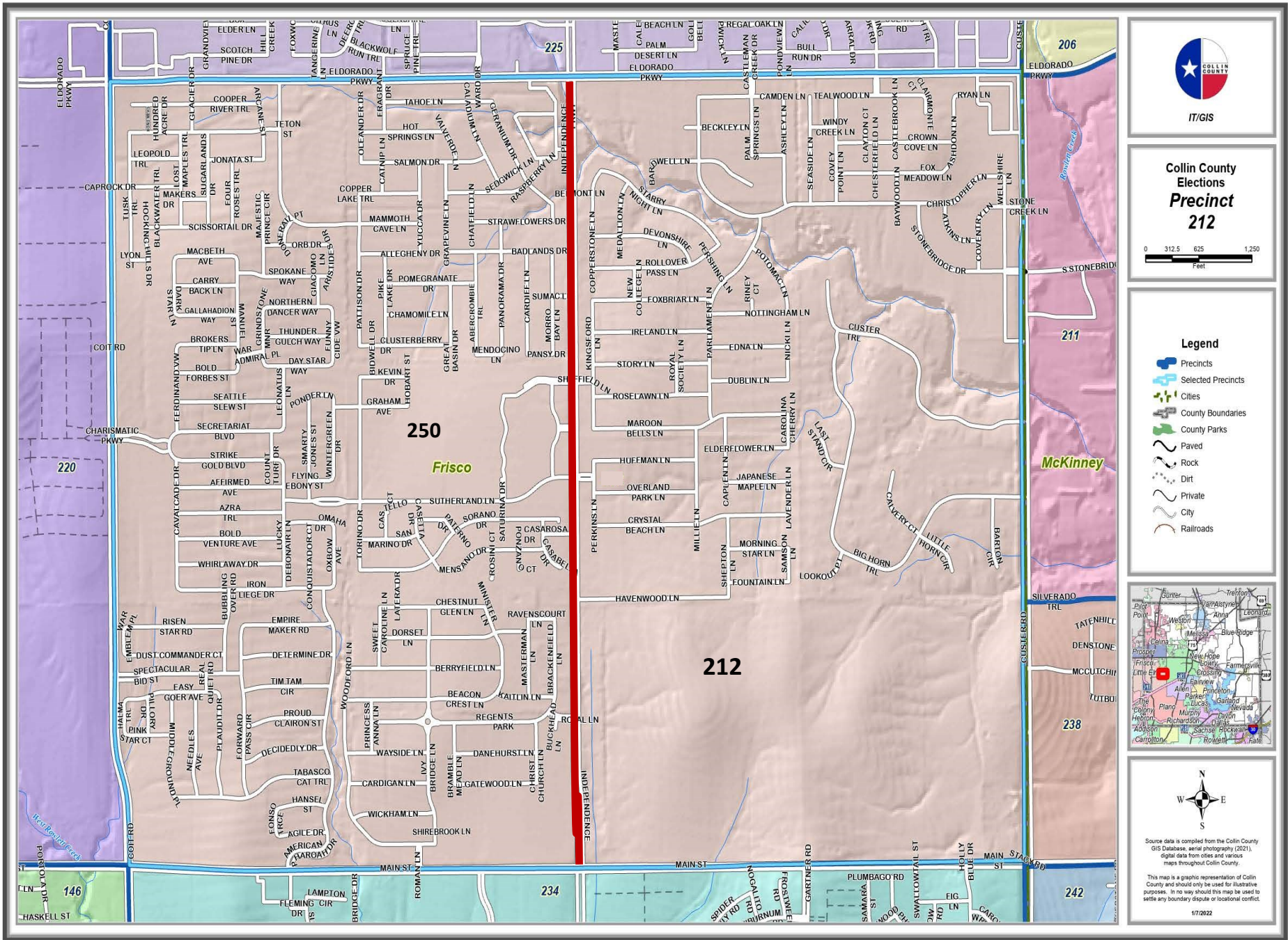
Possible split: North to South Independence Parkway

FINAL Split: North to South on Independence Parkway



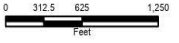
212
 City: Frisco
 ISD: Frisco
 ETJ: N/A
 Zip: 75035

250
 City: Frisco
 ISD: Frisco
 ETJ: N/A
 Zip: 75035



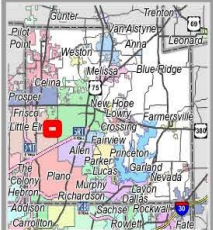
IT/GIS

**Collin County
Elections
Precinct
212**



Legend

- Precincts
- Selected Precincts
- Cities
- County Boundaries
- County Parks
- Paved
- Rock
- Dirt
- Private
- City
- Railroads



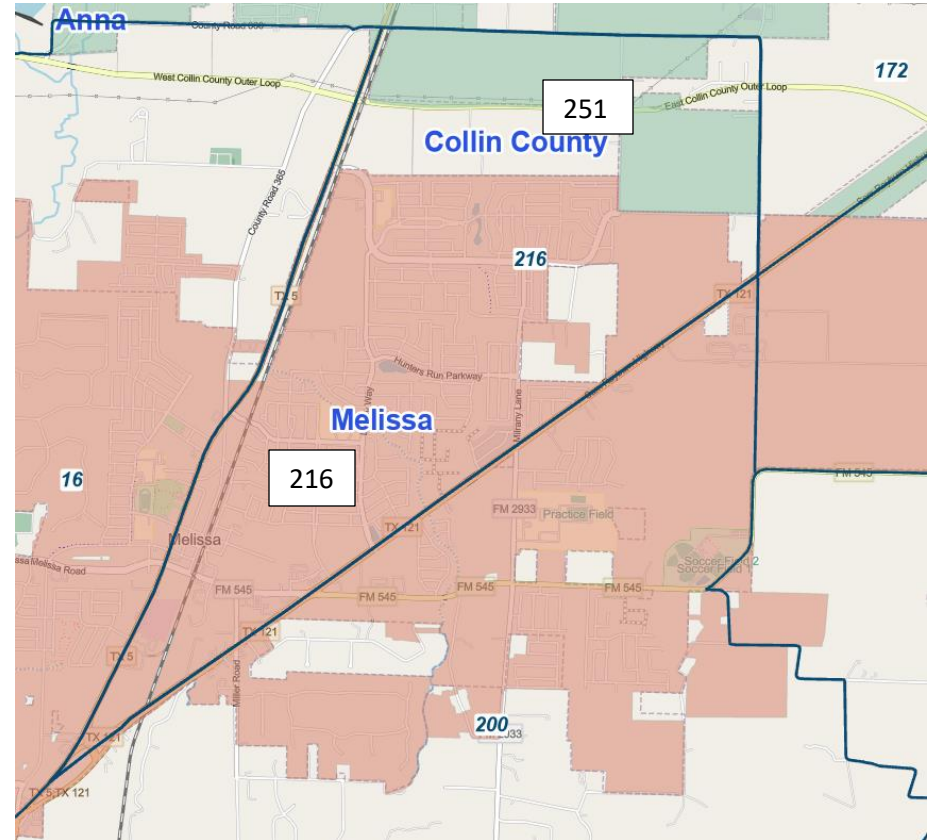
Source data is compiled from the Collin County GIS Database, aerial photography (2021), digital data from cities and various maps throughout Collin County.

This map is a graphic representation of Collin County and should only be used for illustrative purposes. In no way should this map be used to settle any boundary dispute or locational conflict.

Precinct: 216/251

Active Voters: 6,007 (as of 8/7/23)
City: Melissa, Anna, Unincorporated
ISD: Melissa ISD, Anna ISD
ETJ: Melissa, Anna
Zip: 75454, 75409
SUD: North Collin SUD
Commissioners: District 3 – D. Hale
JP Districts: JP1 – P. Raleeh
Constables: District 1 – M. Carpenter
TX House: 67
TX School Board: 12
TX Senate: 8
US House(Congress): 3

Possible Split: West to East, Throckmorton Road to County Road 417, **OR**
East to West, Throckmorton and North to South on Milrany Lane
FINAL Split: East to West on Throckmorton Rd, then South on Milrany Ln

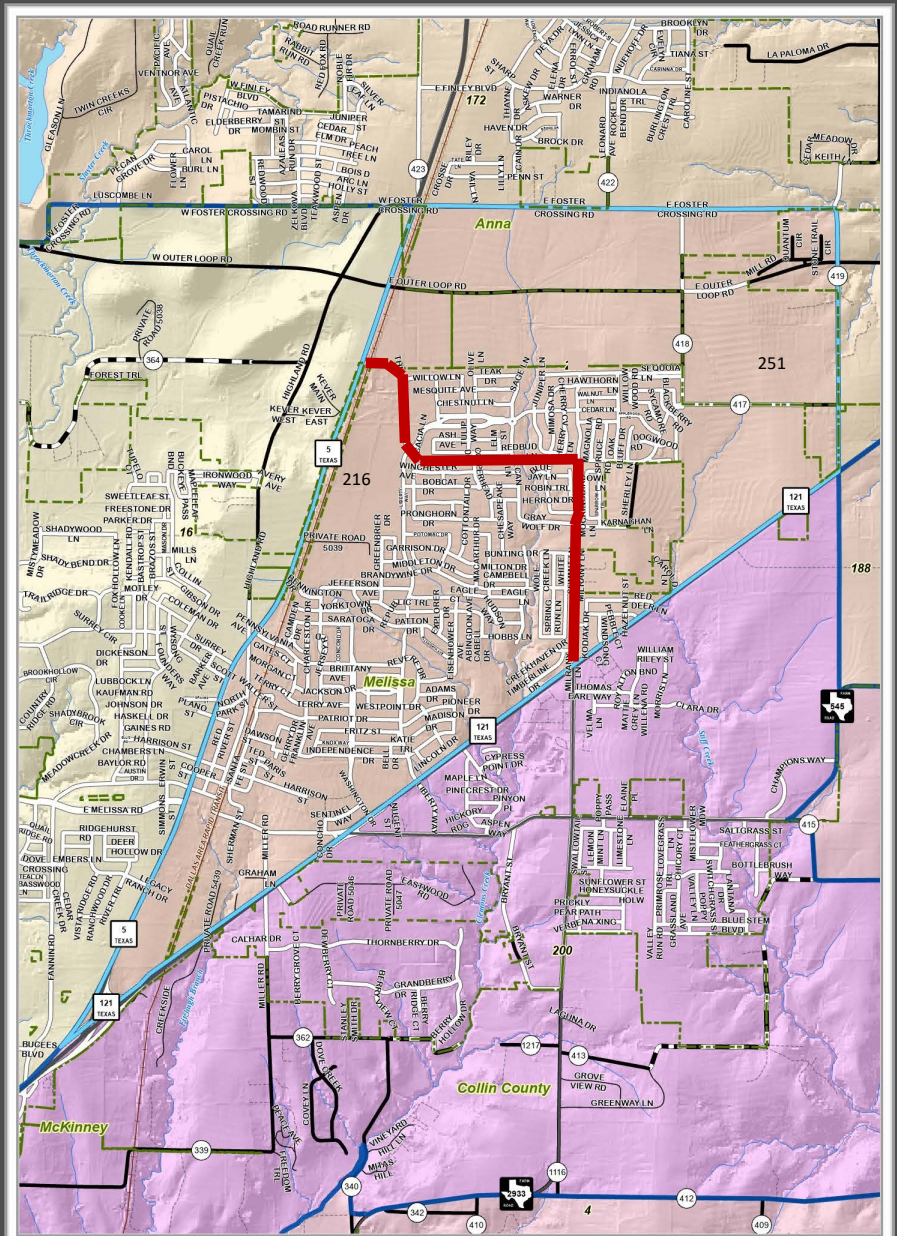


216

City: Melissa, Unincorporated
ISD: Melissa
ETJ: N/A
Zip: 75454
SUD: North Collin SUD

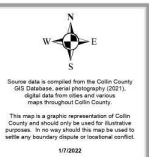
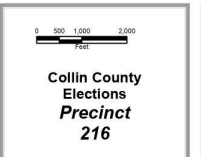
251

City: Melissa, Anna, Unincorporated
ISD: Melissa, Anna
ETJ: Melissa, Anna
Zip: 75454, 75409
SUD: North Collin SUD



Legend

Precincts	Paved
Selected Precincts	Rock
Cities	Dirt
County Boundaries	Private
County Parks	Urban
Railroads	



Precinct: 240/252

Active Voters: 5,882 (as of 8/7/23)

City: Celina, Unincorporated

ISD: Celina, Prosper

ETJ: Celina

Zip: 75009, 75078

SUD: Mustang SUD

MUD: Collin County MUD1

Commissioners: District 1 – S. Fletcher

JP Districts: JP4 – V. Venegoni

Constables: District 4 – J. Wright

TX House: 61

TX School Board: 12

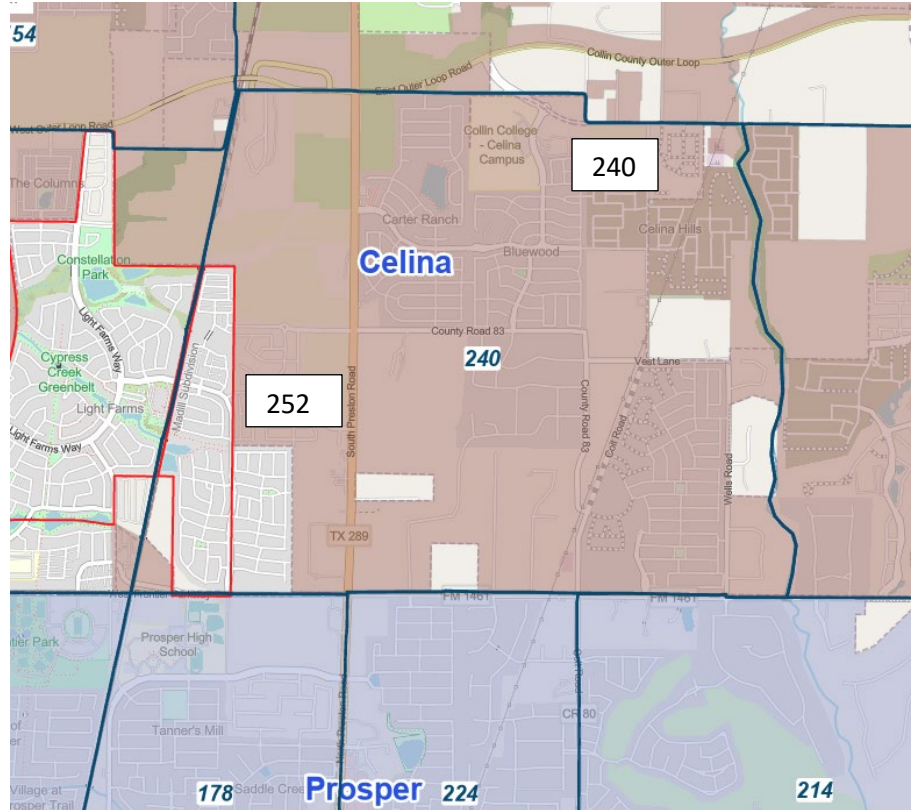
TX Senate: 8

US House(Congress): 3

Created from Precinct 13 split in 2021

Possible split: North to South, South Preston Rd (TX 289), **OR** North to South, South Preston to East, the South County Road 83 to South on Coit Rd

FINAL Split: North to South on TX 289/South Preston Rd to West on County Road 83 to South on Coit Rd



240
 City: Celina, Unincorporated
 ISD: Celina, Prosper
 ETJ: Celina
 Zip: 75009, 75078
 SUD: Mustang SUD

252
 City: Celina, Unincorporated
 ISD: Celina, Prosper
 ETJ: Celina
 Zip: 75009, 75078
 MUD: Collin County MUD1



IT/GIS

Collin County Elections Precinct 240



Legend

- Precincts
- Selected Precincts
- Cities
- County Boundaries
- County Parks
- Paved
- Rock
- Dirt
- Private
- City
- Railroads



Source data is compiled from the Collin County GIS Database, aerial photography (2021), digital data from cities and various maps throughout Collin County.

This map is a graphic representation of Collin County and should only be used for illustrative purposes. In no way should this map be used to settle any boundary dispute or locational conflict.

1/7/2022

