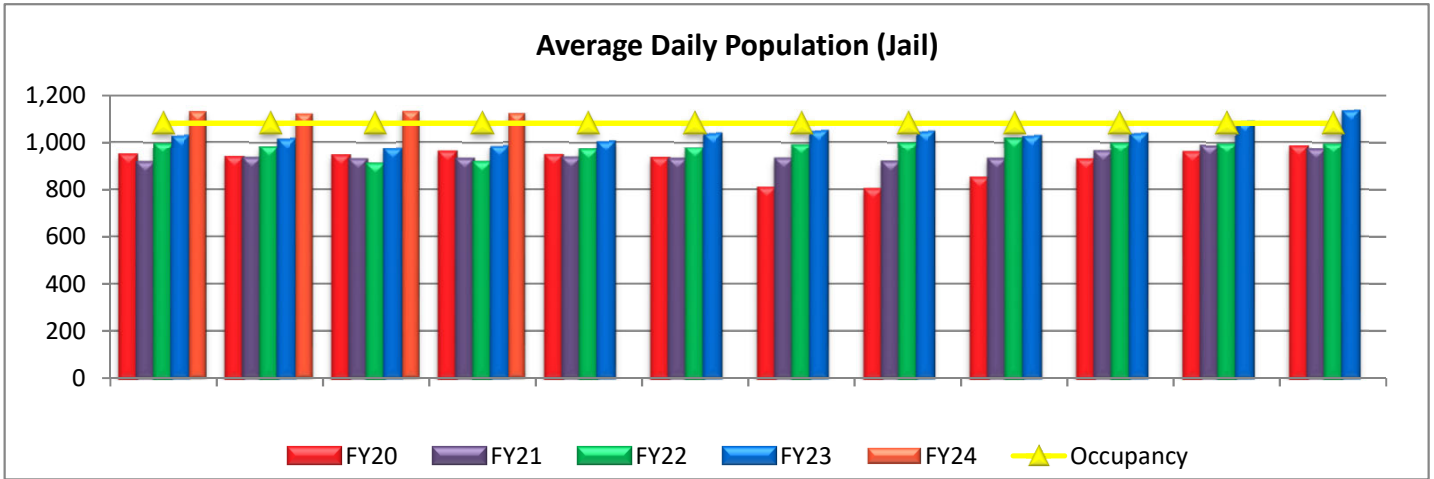


# Sheriff's Office Inmate Stats

## Jail Operations

### Detention Operations

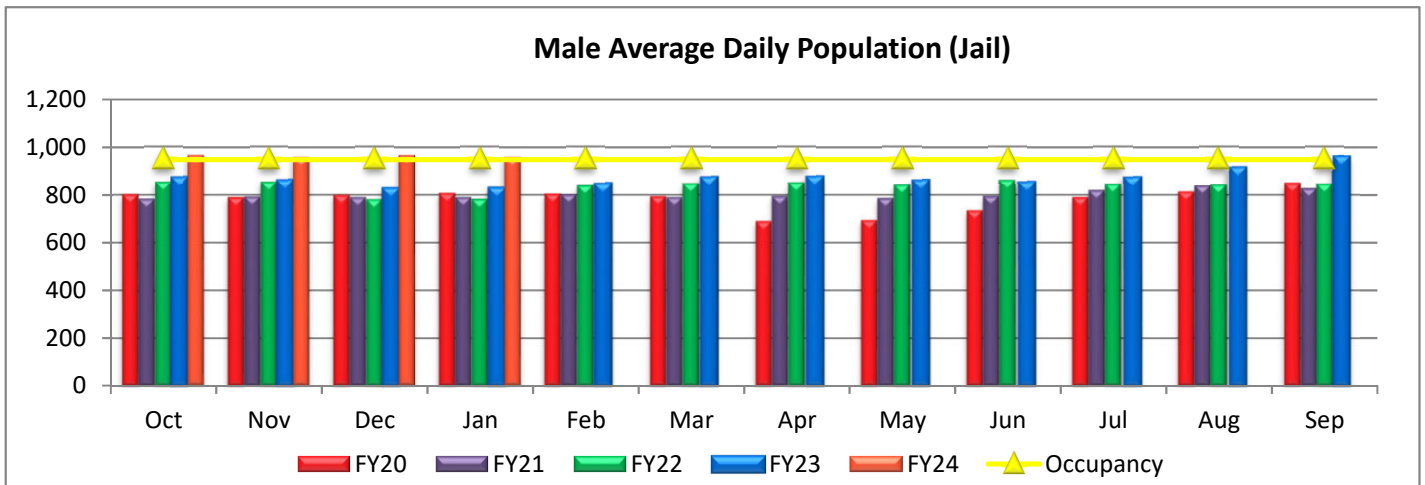
Detention Operations includes many aspects of daily jail operations which include, but are not completed limited to, medical, admissions/release, housing, kitchen, service areas, and laundry. In addition, federal inmates are housed in this facility by contract with the United States Marshall's Office.



Avg	Q1	Q2	Q3	Q4	Avg. Total	% Increase
FY 2020*	940	943	817	952	913	
FY 2021	922	928	922	969	935	2%
FY 2022	959	951	999	993	976	4%
FY 2023	1,001	1,004	1,036	1,082	1,031	6%
FY 2024	1,126	1,121			1,123	9%

Jail capacity is 1,082 which does not include 24 infirmary beds.

Average Daily Populations calculated using the Jail Case Coordinator's Office Daily Statistics which is a snap shot of the ADP at the time that the report was generated.

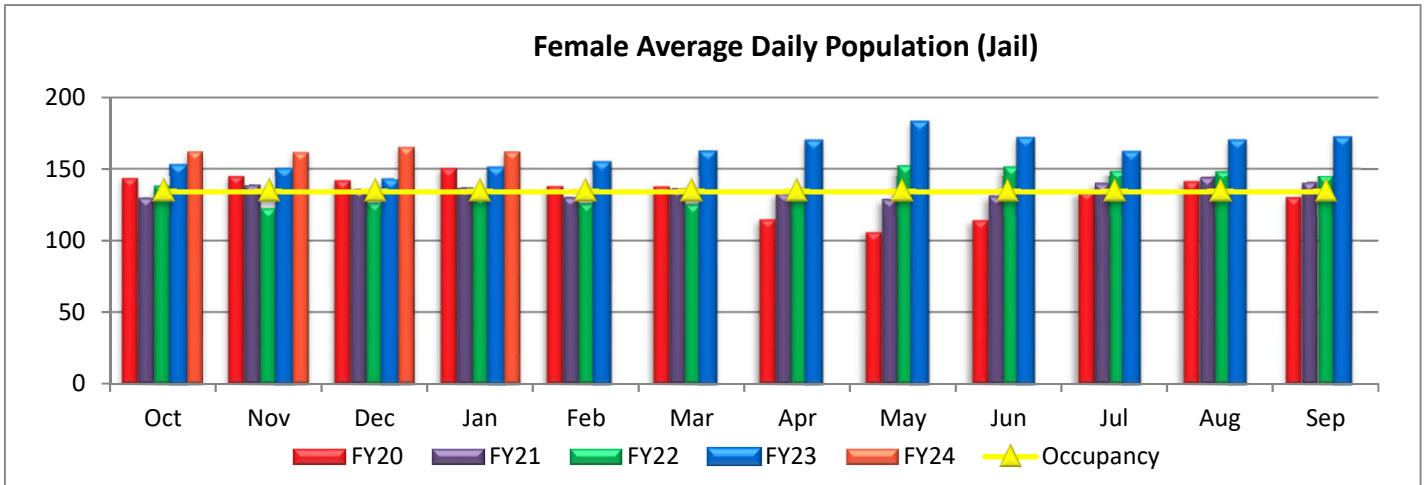


Males	Q1	Q2	Q3	Q4	Avg. Total	% Increase
FY 2020*	796	801	705	817	780	
FY 2021	787	793	791	828	800	2.6%
FY 2022	830	824	853	845	838	4.8%
FY 2023	853	848	861	914	869	3.7%
FY 2024	963	958			961	10.5%

Male jail capacity is 948

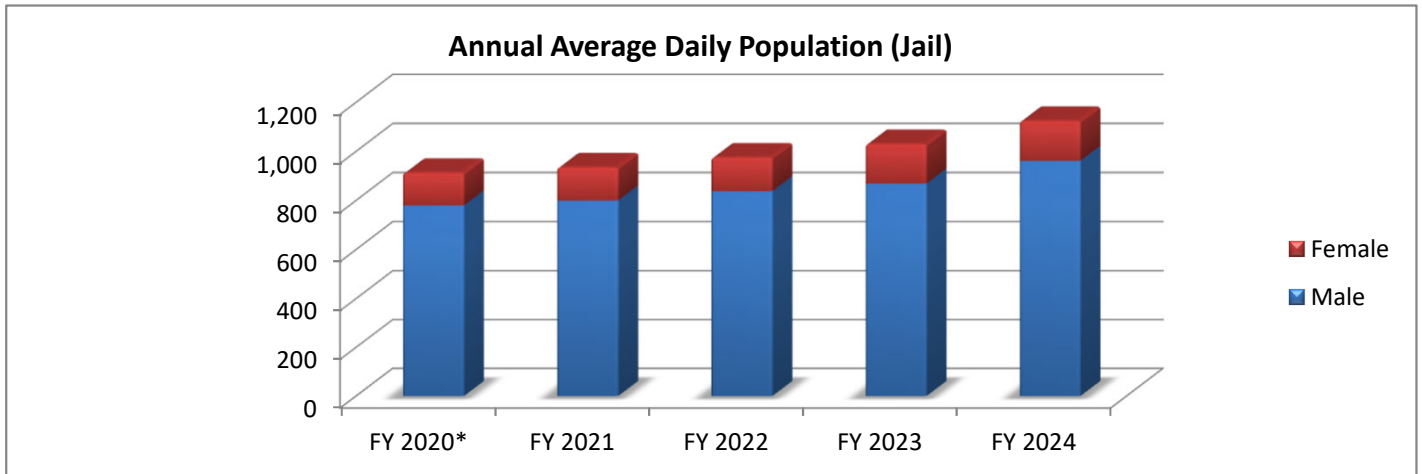
\*Disaster Declaration issued by County Judge March 16,2020 due to COVID-19

## Sheriff's Office Inmate Stats



Females	Q1	Q2	Q3	Q4	Avg. Total	% Increase
FY 2020*	144	142	112	135	133	
FY 2021	135	134	131	141	135	2%
FY 2022	129	128	146	147	138	2%
FY 2023	148	156	174	168	161	17%
FY 2024	163	162			163	1%

Female jail capacity is 134



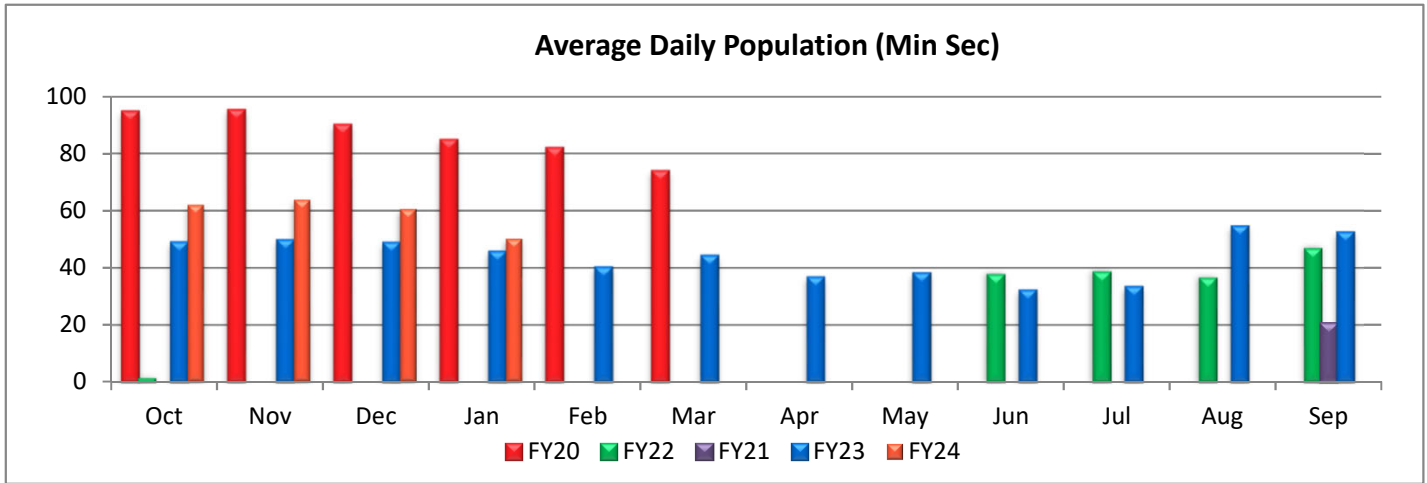
Jail	FY 2020*	FY 2021	FY 2022	FY 2023	FY 2024	FY20-24 % Increase
Male	780	800	838	869	962	
Female	133	135	138	161	163	
<b>Total</b>	<b>913</b>	<b>935</b>	<b>976</b>	<b>1,031</b>	<b>1,125</b>	<b>23.2%</b>
Annual Increase		2%	4%	6%	9%	

\*Disaster Declaration issued by County Judge March 16,2020 due to COVID-19

# Sheriff's Office Inmate Stats

## Minimum Security

Minimum Security is a department under the supervision of the Collin County Sheriff's Office. Minimum Security is responsible for

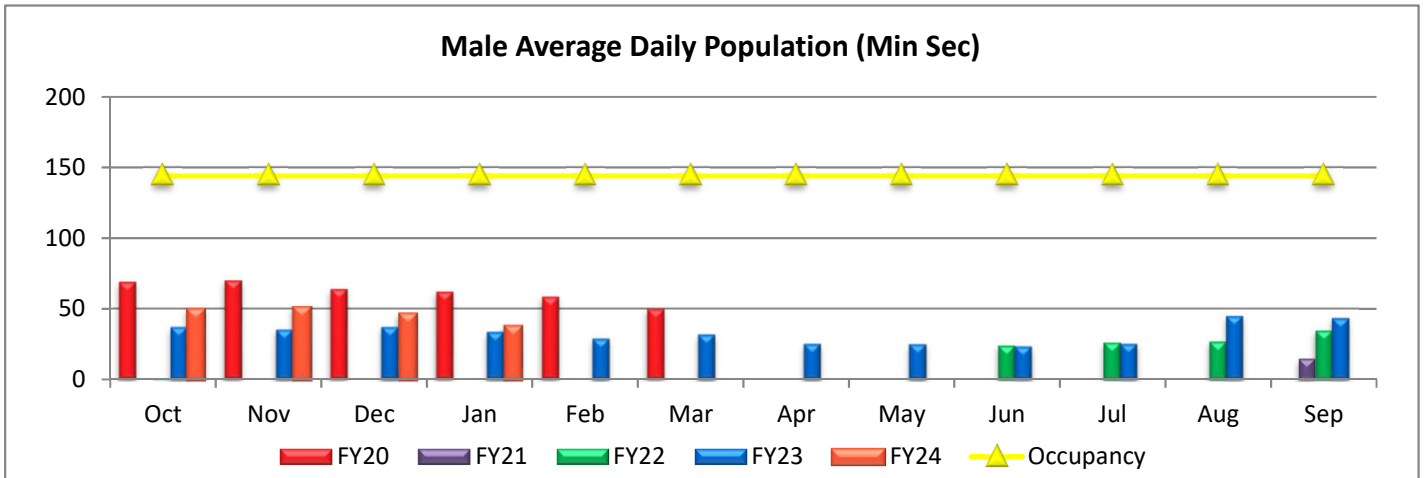


ADP	Q1	Q2	Q3	Q4	Avg. Total	% Increase
FY 2020*	93	80	0	0	43	#REF!
FY 2021	0	0	0	7	2	-96%
FY 2022	0	0	12	40	13	678%
FY 2023	49	43	35	47	44	229%
FY 2024	62	50			56	29%

Minimum Security capacity is 192

Note: Bed availability will vary due to inmate classification.

Average Daily Populations calculated using the Jail Case Coordinator's Office Daily Statistics which is a snap shot of the ADP at the time that the report was generated.



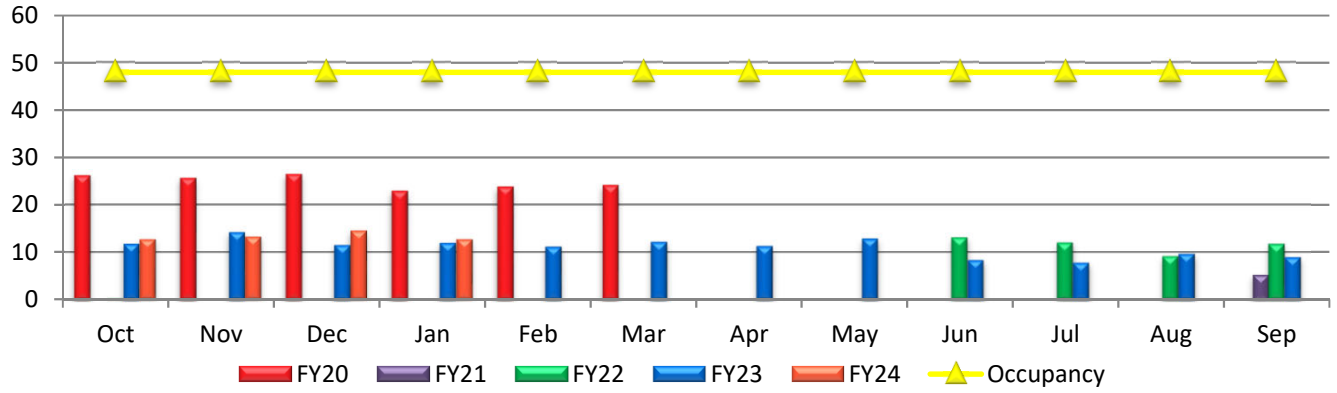
Male	Q1	Q2	Q3	Q4	Avg. Total	% Increase
FY 2020*	67	57	0	0	31	
FY 2021	0	0	0	5	1	-96%
FY 2022	0	0	8	29	9	641%
FY 2023	36	31	25	38	33	248%
FY 2024	49	38			43	32%

Male Minimum Security capacity is 144

\*Disaster Declaration issued by County Judge March 16,2020 due to COVID-19

## Sheriff's Office Inmate Stats

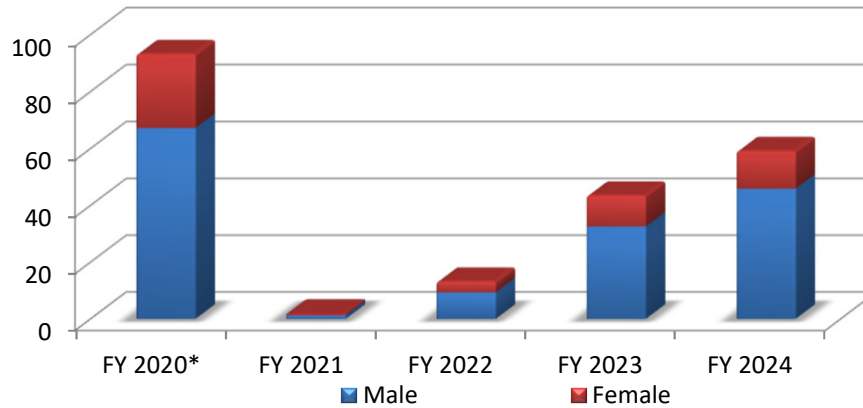
### Female Average Daily Population (Min Sec)



Female	Q1	Q2	Q3	Q4	Avg. Total	% Increase
FY 2020*	26	24	0	0	12	
FY 2021	0	0	0	2	0	-96%
FY 2022	0	0	4	11	4	784%
FY 2023	12	12	11	9	11	183%
FY 2024	14	13			13	19%

Female Minimum Security capacity is 48

### Annual Average Daily Population (Min Sec)

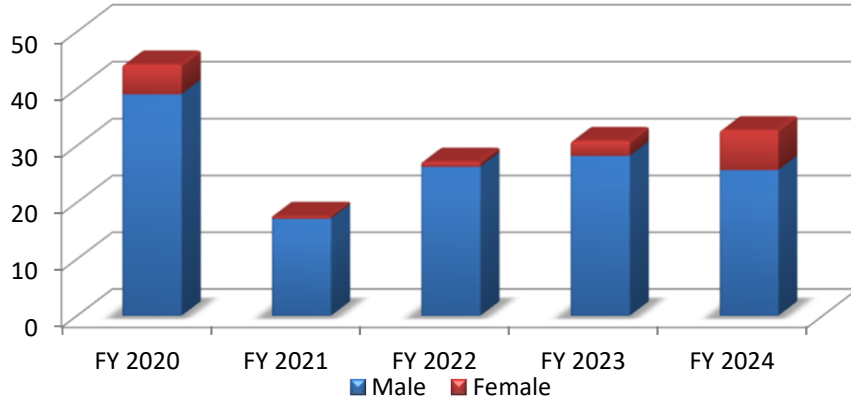


Min Sec	FY 2020*	FY 2021	FY 2022	FY 2023	FY 2024	FY20-24 % Increase
Male	67	1	9	33	46	
Female	26	0	4	11	13	
<b>Total</b>	<b>93</b>	<b>2</b>	<b>13</b>	<b>44</b>	<b>59</b>	<b>-37%</b>
Annual Increase		-98%	678%	229%	36%	

\*Disaster Declaration issued by County Judge March 16,2020 due to COVID-19

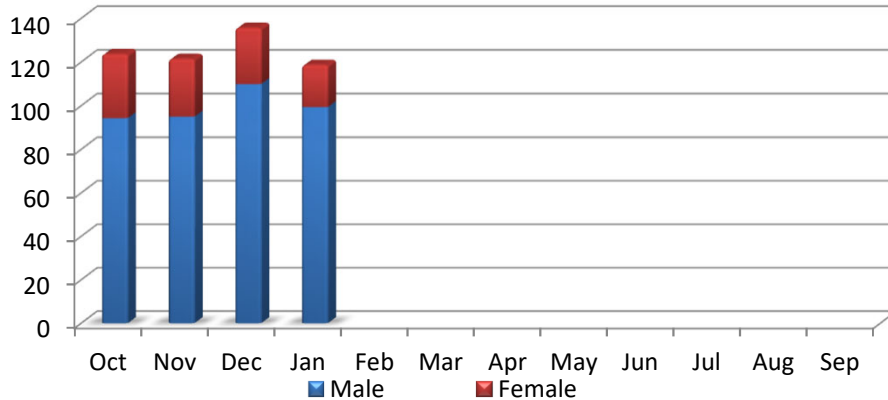
## Sheriff's Office Inmate Stats

### Annual Average Daily Population (Federal Inmates)



Federal	FY 2020	FY 2021	FY 2022	FY 2023	FY 2024	FY20-24 % Increase
Male	39	17	26	28	26	
Female	5	0	1	3	7	
<b>Total</b>	<b>44</b>	<b>18</b>	<b>27</b>	<b>31</b>	<b>33</b>	<b>-26%</b>
Annual Increase		-60%	55%	13%	6%	

### Annual Average Daily Population (Mental Health Holds)

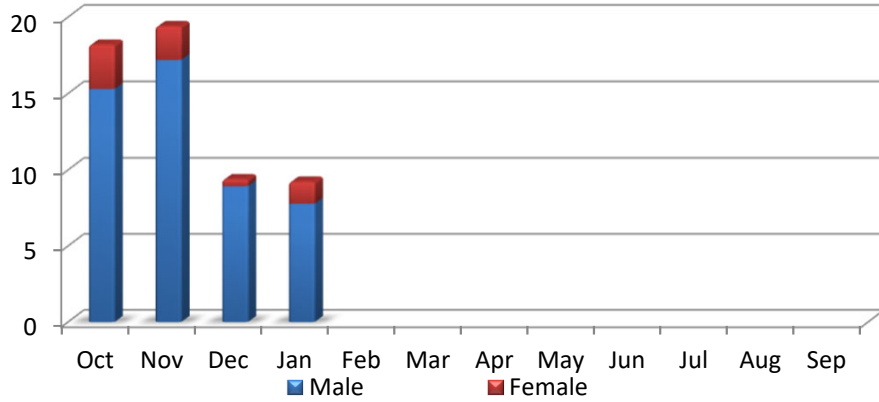


FY 2024	Q1	Q2	Q3	Q4	Average
Male	100	99	0	0	100
Female	27	19	0	0	23
<b>TOTAL</b>	<b>127</b>	<b>119</b>	<b>0</b>	<b>0</b>	<b>123</b>

\*Disaster Declaration issued by County Judge March 16, 2020 due to COVID-19

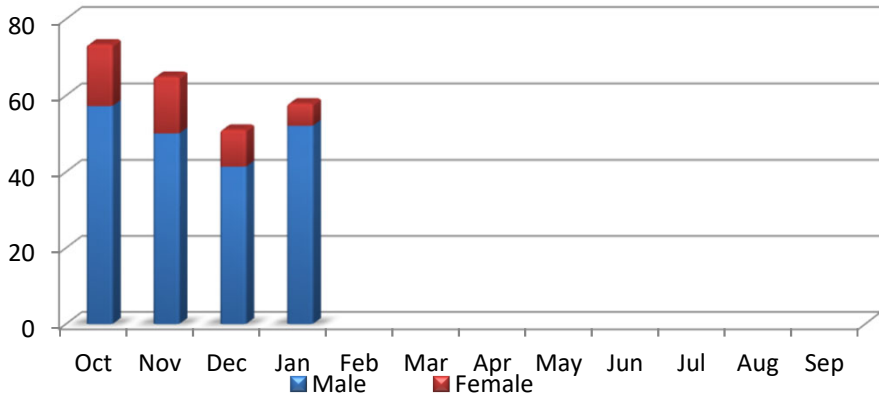
## Sheriff's Office Inmate Stats

### Annual Average Daily Population (Segregation)



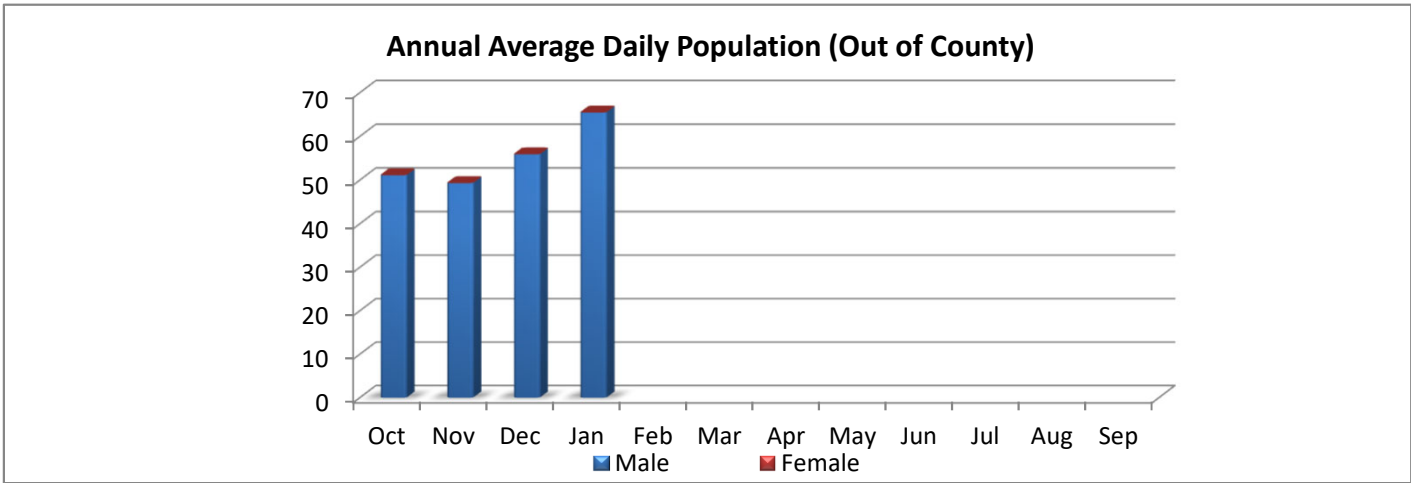
<b>FY 2024</b>	Q1	Q2	Q3	Q4	Average
Male	14	8			11
Female	2	1			2
<b>TOTAL</b>	<b>16</b>	<b>9</b>	<b>0</b>	<b>0</b>	<b>12</b>

### Annual Average Daily Population (Separation)



<b>FY 2024</b>	Q1	Q2	Q3	Q4	Average
Male	50	52			51
Female	14	6			10
<b>TOTAL</b>	<b>63</b>	<b>58</b>	<b>0</b>	<b>0</b>	<b>61</b>

## Sheriff's Office Inmate Stats



<b>FY 2024</b>	Q1	Q2	Q3	Q4	Average
Male	52	65			59
Female	0	0			0
<b>TOTAL</b>	<b>52</b>	<b>65</b>	<b>0</b>	<b>0</b>	<b>59</b>

\*Disaster Declaration issued by County Judge March 16, 2020 due to COVID-19