



PCO #094

Ratcliff Constructors, LP
 4200 Beltway Drive
 Addison, Texas 75001
 Phone: (972) 432-9969
 Fax: (972) 432-9943

Project: 21-501 - Collin County Adult Detention Facility, Phase 1 Addition
 4300 Community Avenue
 McKinney, Texas 75071

Prime Contract Potential Change Order #094: RFI #259 Added Conduit for FSD & MD

TO:	Collin County 4600 Community Avenue McKinney Texas, 75071	FROM:	Ratcliff Constructors, LP 4200 Beltway Drive Addison Texas, 75001
PCO NUMBER/REVISION:	094 / 1	CONTRACT:	1 - Collin County Adult Detention Facility, Phase 1 Addition Prime Contract
REQUEST RECEIVED FROM:		CREATED BY:	CJ Perry (Ratcliff Constructors, LP)
STATUS:	Pending - In Review	CREATED DATE:	3/12 /2024
REFERENCE:		PRIME CONTRACT CHANGE ORDER:	
FIELD CHANGE:	No	ACCOUNTING METHOD:	Amount Based
LOCATION:		PAID IN FULL:	No
SCHEDULE IMPACT:	5 days	TOTAL AMOUNT:	\$38,003.00

POTENTIAL CHANGE ORDER TITLE: RFI #259 Added Conduit for FSD & MD

CHANGE REASON: Allowance

POTENTIAL CHANGE ORDER DESCRIPTION: *(The Contract Is Changed As Follows)*

RFI #259 Added Conduit for FSD & MD

Provide for additional materials, labor, and equipment required to add conduit to all fire smoke dampers and motorized dampers not shown on the mechanical schedule. See backup.

4/1/24 - See REVISED PCO pricing per coordination meeting today onsite including removal of RATCLIFF bonds and fee.

ATTACHMENTS:

#	Cost Code	Description	Type	Amount
1	26-103 - Fiber Optic Cabling	Added Conduit	Subcontractor	\$ 38,003.00
2		Ratcliff Bonds (1.25%)		\$ 0.00
3		Ratcliff Fee (10.00%)		\$ 0.00
Subtotal:				\$38,003.00
Grand Total:				\$38,003.00

Michael Woods (Brinkley Sargent Wiginton Architects)
 5000 Quorum Drive, Suite 600
 Dallas Texas 75254

Collin County
 4600 Community Avenue
 McKinney Texas 75071

Ratcliff Constructors, LP
 4200 Beltway Drive
 Addison Texas 75001



 SIGNATURE DATE 4-2-2024

 SIGNATURE DATE



 SIGNATURE DATE 4/1/24

//BTX CONSTRUCTION GROUP

Electrical & Instrumentation

Collin County ADF.

23005 C0-017

Monday, March 11, 2024

Christopher Perry Jr.

Project Manager | Ratcliff Constructors, L.P.

4200 Beltway Drive, Addison Tx 75001

972-432-9969 Office | 469-855-7192 Cell

cj.perry@ratcliffconstructors.com

Reference: 59 additional fsd/md

Mr. Perry Jr.,

Thank you for the opportunity to provide a lump sum proposal for the above-referenced project. Our proposal is based on the following documentation:

Drawings..... E015, M201,M202,M211,M212,M221,M222

Specifications.....n/a

Total Base Price: ~~\$38,003.00~~ — **\$ 48,534.87** →

Please feel free to call if you have any questions or need additional information.

Kind regards,

Julio Torres

Julio Torres | Project Manager

972-655-8319

jtorres@btxconstructiongroup.com

BTXConstructionGroup.com

SCOPE INCLUSIONS AND EXCLUSIONS

-
1. Provide power to 59 additional smoke and mechanical dampers.
 2. Provide fire alarm raceway for additional 59 smoke and mechanical dampers.

GENERAL CLARIFICATIONS & INCLUSIONS:

1. A complete and inclusive proposal of all aspects specifically shown in the bid documents except for items clarified or excluded in this proposal.
2. BTX Group does not assume any risk for costs associated with the design or load requirements on existing electrical equipment.
3. Contractor and all its subcontractors shall comply with applicable terms and provisions of the Occupational Safety and Health Act of 1970.
4. All Equipment supplied by Owner, Contractor, or other subcontractors must comply with all required codes.
5. This proposal is valid for a period of Thirty (30) days at which time BTX reserve the right to revise pricing contained herein.
6. This proposal is based on a Five (5) day, Eight (8) hour shift per day work schedule for a continuous duration of Two (2) weeks.
7. Overtime is billed for any hours worked over Eight (8) hours per day and all hours worked on weekends or Holidays.
8. Our proposal includes a one-time mobilization/ demobilization fee per site. Any additional mobilizations will be an additional charge based on the scope of work to be completed.
9. BTX Group warranties all workmanship for One (1) year from the date of installation and we carry all existing Manufacturer warranties on materials provided by BTX Group from the date of purchase.

GENERAL EXCLUSIONS:

1. Liability for any underground utilities that are mismarked or that are hit, broken, or need repair due to poor locations, or no locating at all.
2. We exclude geotechnical laboratory services or fees.
3. Trench bedding materials.
4. Concrete scanning.

CO-017

SHEET 1 OF 1

PROJECT NAME Collin County ADF PROJECT NO 23005 WE DATE _____ WORK PERFORMED _____ PHASE CODE _____

DESCRIPTION OF WORK power power and install raceway for Fire Alarm system for 59 additional smoke and mechanical dampers.

FOR Chris Perry Jr.

EWA NO _____

AUTHORIZED BY _____

EMPLOYEE NAME	EMP CLASS	HOURS	STRAIGHT TIME			PREMIUM TIME			PER-DIEM			OVERTIME		QUANTITY	DESCRIPTION	UNIT PRICE	U M	EXTENDED AMOUNT	DESCRIPTION	EQUIP TYPE	MO	RATE	AMOUNT
			RATE	AMOUNT	HOURS	RATE	AMOUNT	Days	RATE	AMOUNT	HOURS	RATE	AMOUNT										
Site Project Manager	PM	40	\$90.10	\$3,604.00	\$0.00	\$0.00	\$0.00	\$0.00	\$0.00	\$0.00	\$135.40	\$0.00	1	Material Greensheets	\$6,327.81	E	\$6,327.81	Mini Excavator	T	0	\$0.00	\$0.00	
Journeyman	JM	260	\$51.21	\$14,953.32	\$0.00	\$0.00	\$0.00	\$0.00	\$0.00	\$0.00	\$72.91	\$0.00					\$0.00	Skidsteer	T	0	\$0.00	\$0.00	
Helper	HP	260	\$38.04	\$11,127.88	\$0.00	\$0.00	\$0.00	\$0.00	\$0.00	\$0.00	\$54.16	\$0.00					\$0.00	Jackhammer	T	0	\$0.00	\$0.00	
			\$38.04	\$0.00	-\$38.04	\$0.00	\$0.00	\$0.00	\$0.00	\$0.00	\$0.00	\$0.00					\$0.00	Packer	T	0	\$0.00	\$0.00	
			\$0.00	\$0.00	\$0.00	\$0.00	\$0.00	\$0.00	\$0.00	\$0.00	\$0.00	\$0.00					\$0.00	Sawcutting Machine	T	6	\$864.00	\$0.00	
			\$0.00	\$0.00	\$0.00	\$0.00	\$0.00	\$0.00	\$0.00	\$0.00	\$0.00	\$0.00					\$0.00	Scissor Lift	T	2	\$2,040.00	\$4,080.00	
			\$0.00	\$0.00	\$0.00	\$0.00	\$0.00	\$0.00	\$0.00	\$0.00	\$0.00	\$0.00					\$0.00	Company Truck	C	1	\$750.00	\$750.00	
			\$0.00	\$0.00	\$0.00	\$0.00	\$0.00	\$0.00	\$0.00	\$0.00	\$0.00	\$0.00					\$0.00	cable lugger	T	0	\$1,283.30	\$0.00	
			\$0.00	\$0.00	\$0.00	\$0.00	\$0.00	\$0.00	\$0.00	\$0.00	\$0.00	\$0.00					\$0.00	Freight for 3rd Party				\$0.00	
			\$0.00	\$0.00	\$0.00	\$0.00	\$0.00	\$0.00	\$0.00	\$0.00	\$0.00	\$0.00					\$0.00	Fuel, Oil & Lube for 3rd Party				\$	100.00
Straight Time Labor - Sheet Sub-Total											624	\$	29,885.00	Sheet Sub-Total	\$	9,327.81	T 3rd Party Equip. - Sheet Sub-Total	\$	4,180.00				
Premium Time Labor - Sheet Sub-Total											N/A	\$	-	Freight	\$	-	Markup - 3rd Party Only	0.00%	\$	-			
Overtime Time Labor - Sheet Sub-Total											0	\$	-	Markup	0.00%	\$	-	Equipment Tax - 3rd Party	0.00%	\$	-		
Per-Diem - Sheet Sub-Total											0	\$	-	Sales Tax	\$	-	C Company Owned - Sheet Sub-Total	\$	750.00				
TOTAL LABOR (This Sheet)											624	\$	29,885.00	TOTAL	\$	13,257.81	TOTAL EQUIPMENT (This Sheet)	\$	44,122.81				

IN LIEU OF SIGNATURE, PLEASE ADVISE IMMEDIATELY IF ANY OF THE ABOVE DOES NOT AGREE WITH YOUR RECORDS

APPROVED _____ DATE _____
 BY _____ COMPANY _____
 CLIENT AUTHORIZED EXTRA WORK APPROVER _____

REMARKS: _____

\$38,003.00
as discussed at coordination meeting with Engineer & Collin County 4/11/24

GREEN SHEETS

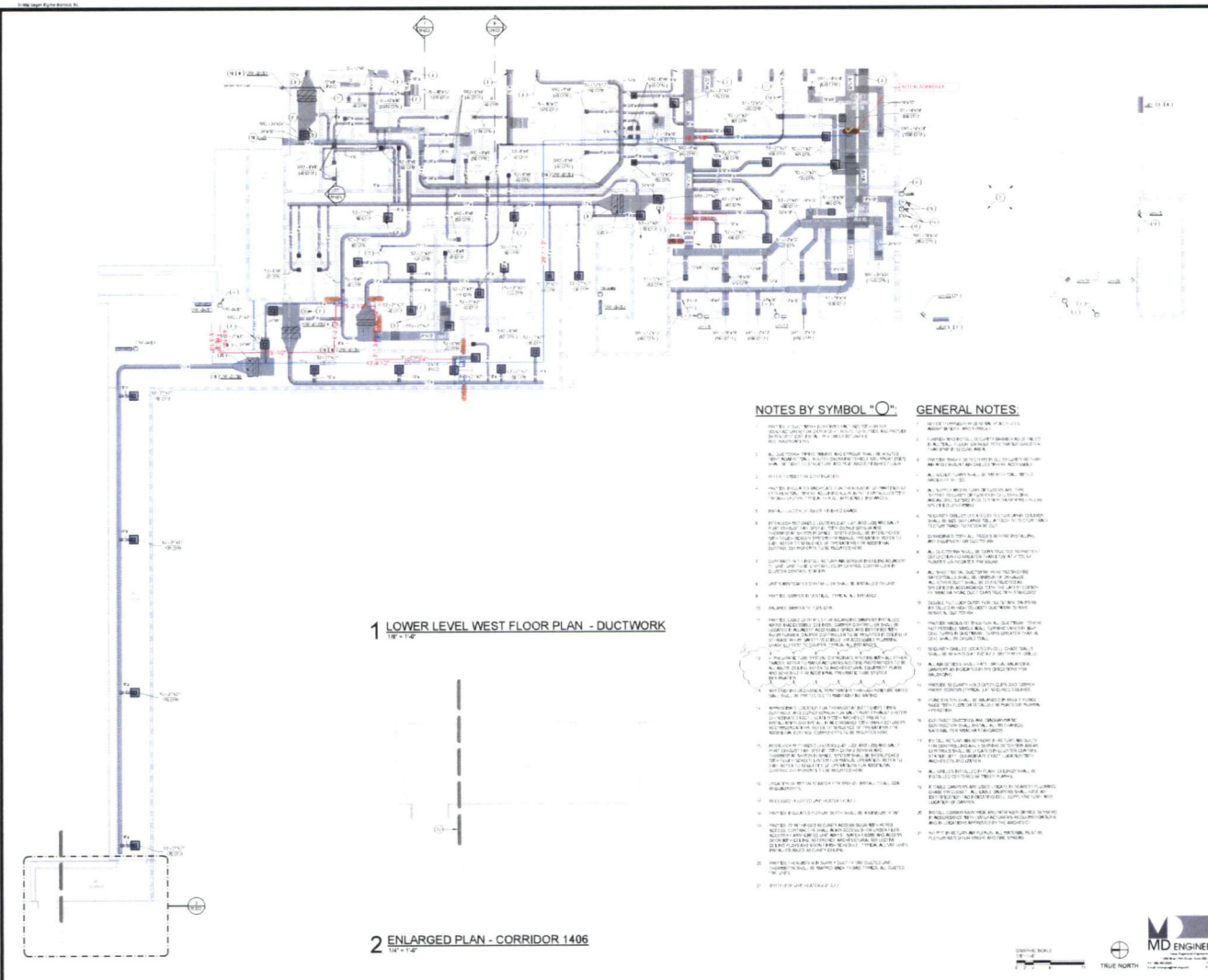
Project Name

ELECTRICAL

Last Verification:

12/03/2013 10:05 AM

Proposal No.			ESTIMATOR			584.23			S9,327.61		
NO.	CODE	DET QTY	MATERIAL DESCRIPTION	QUANTITY	LABOR UNIT	U/M	LABOR EXTENSION	MATERIAL PRICE	U/M	MATERIAL EXTENSION	
			LOWER LEVEL (22 FSD, 3 MD)								
			POWER								
	75EMT	856	3/4" Emt Conduit	850	0.065	FT	55.25	\$1.45	FT	\$1,233	
	75ECON	73	3/4" Emt Connectors	75	0.060	EA	4.50	\$0.57	EA	\$43	
	75ECP	100	3/4" Emt Couplings	100	0.055	EA	5.50	\$0.57	EA	\$57	
	75ES	120	3/4" Emt Support	120	0.100	EA	12.00	\$1.20	EA	\$144	
	48Q2	40	4" Square Box 2-1/8" Deep	40	0.450	EA	18.00	\$3.12	EA	\$125	
	48QBC	40	4" Square Blank Cover	40	0.100	EA	4.00	\$1.03	EA	\$41	
	12AWG	2550	#12 Cu Stranded	2,550	0.010	FT	25.50	\$0.24	FT	\$612	
	T12	78	Termination Lug & Brady Label - #12	78	0.220	EA	17.16	\$1.50	EA	\$117	
			F/A								
	75EMT	300	3/4" Emt Conduit	300	0.065	FT	19.50	\$1.45	FT	\$435	
	75ECON	73	3/4" Emt Connectors	75	0.060	EA	4.50	\$0.57	EA	\$43	
	75ECP	40	3/4" Emt Couplings	40	0.055	EA	2.20	\$0.57	EA	\$23	
	75ES	50	3/4" Emt Support	50	0.100	EA	5.00	\$1.20	EA	\$60	
	48Q2	75	4" Square Box 2-1/8" Deep	75	0.450	EA	33.75	\$3.12	EA	\$234	
	48QBC	75	4" Square Blank Cover	75	0.100	EA	7.50	\$1.03	EA	\$77	
	75ST	150	3/4" Sealtite Flexible Conduit	150	0.080	FT	12.00	\$1.23	FT	\$185	
	75STC	50	3/4" Sealtite Straight Connector	50	0.150	EA	7.50	\$2.29	EA	\$115	
			LEVEL 1 (2 FSD, 1MD)								
			POWER								
	75EMT	600	3/4" Emt Conduit	500	0.065	FT	32.50	\$1.45	FT	\$725	
	75ECON	16	3/4" Emt Connectors	20	0.060	EA	1.20	\$0.57	EA	\$11	
	75ECP	60	3/4" Emt Couplings	60	0.055	EA	3.30	\$0.57	EA	\$34	
	75ES	80	3/4" Emt Support	70	0.100	EA	7.00	\$1.20	EA	\$84	
	48Q2	10	4" Square Box 2-1/8" Deep	16	0.450	EA	7.20	\$3.12	EA	\$50	
	48QBC	16	4" Square Blank Cover	16	0.100	EA	1.60	\$1.03	EA	\$16	
	8AWG	600	#8 Cu Stranded	600	0.012	FT	7.20	\$0.40	FT	\$240	
	12AWG	600	#12 Cu Stranded	300	0.010	FT	3.00	\$0.24	FT	\$72	
	10AWG	600	#10 Cu Stranded	600	0.012	FT	7.20	\$0.34	FT	\$204	
	T12	12	Termination Lug & Brady Label - #12	12	0.220	EA	2.64	\$1.50	EA	\$18	
	T10	6	Termination Lug & Brady Label - #10	6	0.250	EA	1.50	\$1.00	EA	\$6	
	T8	6	Termination Lug & Brady Label - #8	6	0.300	EA	1.80	\$1.30	EA	\$8	
	75ST	24	3/4" Sealtite Flexible Conduit	24	0.080	FT	1.92	\$1.23	FT	\$30	
	75STC	25	3/4" Sealtite Straight Connector	25	0.150	EA	3.75	\$2.29	EA	\$57	
			F/A								
	75EMT	400	3/4" Emt Conduit	400	0.065	FT	26.00	\$1.45	FT	\$580	
	75ECON	12	3/4" Emt Connectors	12	0.060	EA	0.72	\$0.57	EA	\$7	
	75ECP	36	3/4" Emt Couplings	36	0.055	EA	1.98	\$0.57	EA	\$21	
	75ES	15	3/4" Emt Support	15	0.100	EA	1.50	\$1.20	EA	\$18	
	48Q2	10	4" Square Box 2-1/8" Deep	10	0.450	EA	4.50	\$3.12	EA	\$31	
	48QBC	10	4" Square Blank Cover	10	0.100	EA	1.00	\$1.03	EA	\$10	
			TIER LEVEL (27FSD, 3MD)								
			POWER								
	75EMT	700	3/4" Emt Conduit	700	0.065	FT	45.50	\$1.45	FT	\$1,015	
	75ECON	70	3/4" Emt Connectors	70	0.060	EA	4.20	\$0.57	EA	\$40	
	75ECP	70	3/4" Emt Couplings	70	0.055	EA	3.85	\$0.57	EA	\$40	
	75ES	90	3/4" Emt Support	90	0.100	EA	9.00	\$1.20	EA	\$108	
	48Q2	40	4" Square Box 2-1/8" Deep	40	0.450	EA	18.00	\$3.12	EA	\$125	
	48QBC	40	4" Square Blank Cover	40	0.100	EA	4.00	\$1.03	EA	\$41	
	12AWG	2000	#12 Cu Stranded	2,000	0.010	FT	20.00	\$0.24	FT	\$480	
	T12	12	Termination Lug & Brady Label - #12	93	0.220	EA	20.46	\$1.50	EA	\$140	
			F/A								
	75EMT	550	3/4" Emt Conduit	550	0.065	FT	35.75	\$1.45	FT	\$798	
	75ECON	90	3/4" Emt Connectors	90	0.060	EA	5.40	\$0.57	EA	\$51	
	75ECP	60	3/4" Emt Couplings	60	0.055	EA	3.30	\$0.57	EA	\$34	
	75ES	70	3/4" Emt Support	70	0.100	EA	7.00	\$1.20	EA	\$84	
	48Q2	60	4" Square Box 2-1/8" Deep	60	0.450	EA	27.00	\$3.12	EA	\$187	
	48QBC	60	4" Square Blank Cover	60	0.100	EA	6.00	\$1.03	EA	\$62	
	75ST	180	3/4" Sealtite Flexible Conduit	180	0.080	FT	14.40	\$1.23	FT	\$221	
	75STC	60	3/4" Sealtite Straight Connector	60	0.150	EA	9.00	\$2.29	EA	\$137	



1 LOWER LEVEL WEST FLOOR PLAN - DUCTWORK

2 ENLARGED PLAN - CORRIDOR 1406

NOTES BY SYMBOL "O":

1. ALL DUCTWORK SHALL BE INSTALLED IN ACCORDANCE WITH THE FOLLOWING NOTES AND THE MECHANICAL CODES.
2. ALL DUCTWORK SHALL BE INSTALLED IN ACCORDANCE WITH THE FOLLOWING NOTES AND THE MECHANICAL CODES.
3. ALL DUCTWORK SHALL BE INSTALLED IN ACCORDANCE WITH THE FOLLOWING NOTES AND THE MECHANICAL CODES.
4. ALL DUCTWORK SHALL BE INSTALLED IN ACCORDANCE WITH THE FOLLOWING NOTES AND THE MECHANICAL CODES.
5. ALL DUCTWORK SHALL BE INSTALLED IN ACCORDANCE WITH THE FOLLOWING NOTES AND THE MECHANICAL CODES.
6. ALL DUCTWORK SHALL BE INSTALLED IN ACCORDANCE WITH THE FOLLOWING NOTES AND THE MECHANICAL CODES.
7. ALL DUCTWORK SHALL BE INSTALLED IN ACCORDANCE WITH THE FOLLOWING NOTES AND THE MECHANICAL CODES.
8. ALL DUCTWORK SHALL BE INSTALLED IN ACCORDANCE WITH THE FOLLOWING NOTES AND THE MECHANICAL CODES.
9. ALL DUCTWORK SHALL BE INSTALLED IN ACCORDANCE WITH THE FOLLOWING NOTES AND THE MECHANICAL CODES.
10. ALL DUCTWORK SHALL BE INSTALLED IN ACCORDANCE WITH THE FOLLOWING NOTES AND THE MECHANICAL CODES.
11. ALL DUCTWORK SHALL BE INSTALLED IN ACCORDANCE WITH THE FOLLOWING NOTES AND THE MECHANICAL CODES.
12. ALL DUCTWORK SHALL BE INSTALLED IN ACCORDANCE WITH THE FOLLOWING NOTES AND THE MECHANICAL CODES.
13. ALL DUCTWORK SHALL BE INSTALLED IN ACCORDANCE WITH THE FOLLOWING NOTES AND THE MECHANICAL CODES.
14. ALL DUCTWORK SHALL BE INSTALLED IN ACCORDANCE WITH THE FOLLOWING NOTES AND THE MECHANICAL CODES.
15. ALL DUCTWORK SHALL BE INSTALLED IN ACCORDANCE WITH THE FOLLOWING NOTES AND THE MECHANICAL CODES.
16. ALL DUCTWORK SHALL BE INSTALLED IN ACCORDANCE WITH THE FOLLOWING NOTES AND THE MECHANICAL CODES.
17. ALL DUCTWORK SHALL BE INSTALLED IN ACCORDANCE WITH THE FOLLOWING NOTES AND THE MECHANICAL CODES.
18. ALL DUCTWORK SHALL BE INSTALLED IN ACCORDANCE WITH THE FOLLOWING NOTES AND THE MECHANICAL CODES.
19. ALL DUCTWORK SHALL BE INSTALLED IN ACCORDANCE WITH THE FOLLOWING NOTES AND THE MECHANICAL CODES.
20. ALL DUCTWORK SHALL BE INSTALLED IN ACCORDANCE WITH THE FOLLOWING NOTES AND THE MECHANICAL CODES.

GENERAL NOTES:

1. ALL DUCTWORK SHALL BE INSTALLED IN ACCORDANCE WITH THE FOLLOWING NOTES AND THE MECHANICAL CODES.
2. ALL DUCTWORK SHALL BE INSTALLED IN ACCORDANCE WITH THE FOLLOWING NOTES AND THE MECHANICAL CODES.
3. ALL DUCTWORK SHALL BE INSTALLED IN ACCORDANCE WITH THE FOLLOWING NOTES AND THE MECHANICAL CODES.
4. ALL DUCTWORK SHALL BE INSTALLED IN ACCORDANCE WITH THE FOLLOWING NOTES AND THE MECHANICAL CODES.
5. ALL DUCTWORK SHALL BE INSTALLED IN ACCORDANCE WITH THE FOLLOWING NOTES AND THE MECHANICAL CODES.
6. ALL DUCTWORK SHALL BE INSTALLED IN ACCORDANCE WITH THE FOLLOWING NOTES AND THE MECHANICAL CODES.
7. ALL DUCTWORK SHALL BE INSTALLED IN ACCORDANCE WITH THE FOLLOWING NOTES AND THE MECHANICAL CODES.
8. ALL DUCTWORK SHALL BE INSTALLED IN ACCORDANCE WITH THE FOLLOWING NOTES AND THE MECHANICAL CODES.
9. ALL DUCTWORK SHALL BE INSTALLED IN ACCORDANCE WITH THE FOLLOWING NOTES AND THE MECHANICAL CODES.
10. ALL DUCTWORK SHALL BE INSTALLED IN ACCORDANCE WITH THE FOLLOWING NOTES AND THE MECHANICAL CODES.
11. ALL DUCTWORK SHALL BE INSTALLED IN ACCORDANCE WITH THE FOLLOWING NOTES AND THE MECHANICAL CODES.
12. ALL DUCTWORK SHALL BE INSTALLED IN ACCORDANCE WITH THE FOLLOWING NOTES AND THE MECHANICAL CODES.
13. ALL DUCTWORK SHALL BE INSTALLED IN ACCORDANCE WITH THE FOLLOWING NOTES AND THE MECHANICAL CODES.
14. ALL DUCTWORK SHALL BE INSTALLED IN ACCORDANCE WITH THE FOLLOWING NOTES AND THE MECHANICAL CODES.
15. ALL DUCTWORK SHALL BE INSTALLED IN ACCORDANCE WITH THE FOLLOWING NOTES AND THE MECHANICAL CODES.
16. ALL DUCTWORK SHALL BE INSTALLED IN ACCORDANCE WITH THE FOLLOWING NOTES AND THE MECHANICAL CODES.
17. ALL DUCTWORK SHALL BE INSTALLED IN ACCORDANCE WITH THE FOLLOWING NOTES AND THE MECHANICAL CODES.
18. ALL DUCTWORK SHALL BE INSTALLED IN ACCORDANCE WITH THE FOLLOWING NOTES AND THE MECHANICAL CODES.
19. ALL DUCTWORK SHALL BE INSTALLED IN ACCORDANCE WITH THE FOLLOWING NOTES AND THE MECHANICAL CODES.
20. ALL DUCTWORK SHALL BE INSTALLED IN ACCORDANCE WITH THE FOLLOWING NOTES AND THE MECHANICAL CODES.

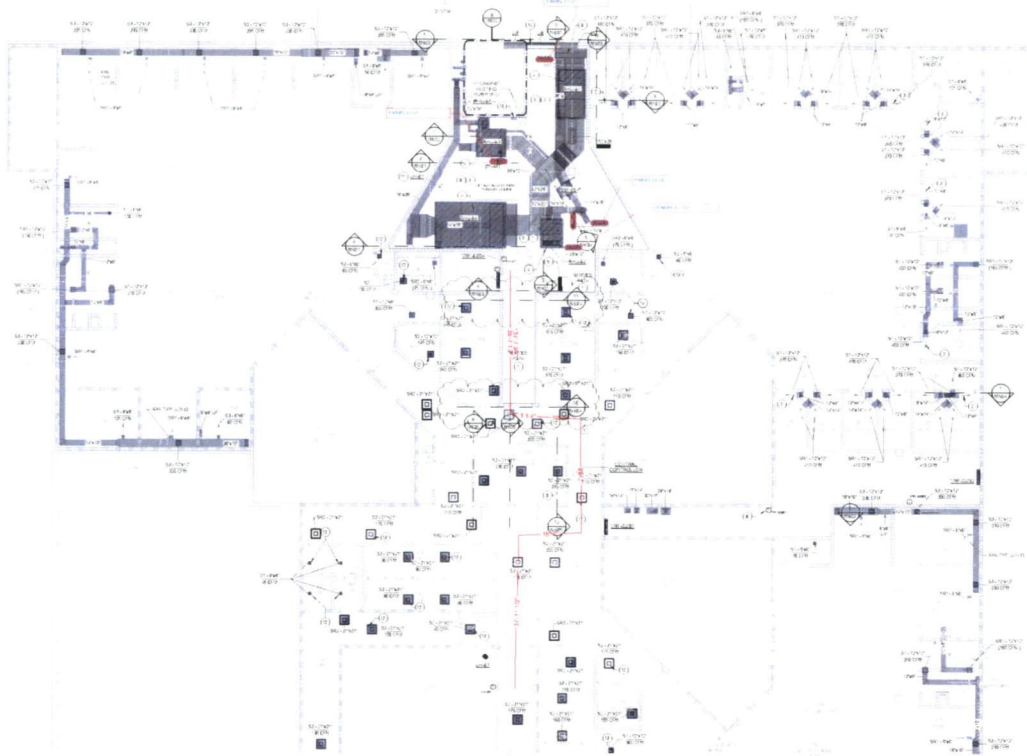
TRUE NORTH
 GRAPHIC SCALE
MD ENGINEERING
 Mechanical Engineering
 4000 COMMUNITY AVE. MCKENNEY, TX 75071
 TEL: 972.346.1111 FAX: 972.346.1112
 WWW.MDENGINEERING.COM

BRINKLEY SARGENT WIGHTON ARCHITECTS
 4000 COMMUNITY AVE. MCKENNEY, TX 75071
 TEL: 972.346.1111 FAX: 972.346.1112
 WWW.BSWARCHITECTS.COM

COLLIN COUNTY ADF - PHASE 1 ADDITION

FOR BID

M202



1 LEVEL 1 EAST FLOOR PLAN - DUCTWORK

GENERAL NOTES:

1. ALL WORK SHALL BE IN ACCORDANCE WITH THE LATEST EDITIONS OF THE MCGRAW-HILL BUILDING CONSTRUCTION GUIDE.
2. ALL WORK SHALL BE IN ACCORDANCE WITH THE LATEST EDITIONS OF THE MCGRAW-HILL MECHANICAL HANDBOOK.
3. ALL WORK SHALL BE IN ACCORDANCE WITH THE LATEST EDITIONS OF THE MCGRAW-HILL ELECTRICAL HANDBOOK.
4. ALL WORK SHALL BE IN ACCORDANCE WITH THE LATEST EDITIONS OF THE MCGRAW-HILL PLUMBING HANDBOOK.
5. ALL WORK SHALL BE IN ACCORDANCE WITH THE LATEST EDITIONS OF THE MCGRAW-HILL ROOFING HANDBOOK.
6. ALL WORK SHALL BE IN ACCORDANCE WITH THE LATEST EDITIONS OF THE MCGRAW-HILL PAINTING HANDBOOK.
7. ALL WORK SHALL BE IN ACCORDANCE WITH THE LATEST EDITIONS OF THE MCGRAW-HILL FINISHES HANDBOOK.
8. ALL WORK SHALL BE IN ACCORDANCE WITH THE LATEST EDITIONS OF THE MCGRAW-HILL STRUCTURAL STEEL HANDBOOK.
9. ALL WORK SHALL BE IN ACCORDANCE WITH THE LATEST EDITIONS OF THE MCGRAW-HILL CONCRETE HANDBOOK.
10. ALL WORK SHALL BE IN ACCORDANCE WITH THE LATEST EDITIONS OF THE MCGRAW-HILL FOUNDATIONS HANDBOOK.
11. ALL WORK SHALL BE IN ACCORDANCE WITH THE LATEST EDITIONS OF THE MCGRAW-HILL GEOTECHNICAL ENGINEERING HANDBOOK.
12. ALL WORK SHALL BE IN ACCORDANCE WITH THE LATEST EDITIONS OF THE MCGRAW-HILL SOIL MECHANICS HANDBOOK.
13. ALL WORK SHALL BE IN ACCORDANCE WITH THE LATEST EDITIONS OF THE MCGRAW-HILL FOUNDATIONS AND FOUNDATION DESIGN HANDBOOK.
14. ALL WORK SHALL BE IN ACCORDANCE WITH THE LATEST EDITIONS OF THE MCGRAW-HILL FOUNDATIONS AND FOUNDATION DESIGN HANDBOOK.
15. ALL WORK SHALL BE IN ACCORDANCE WITH THE LATEST EDITIONS OF THE MCGRAW-HILL FOUNDATIONS AND FOUNDATION DESIGN HANDBOOK.
16. ALL WORK SHALL BE IN ACCORDANCE WITH THE LATEST EDITIONS OF THE MCGRAW-HILL FOUNDATIONS AND FOUNDATION DESIGN HANDBOOK.
17. ALL WORK SHALL BE IN ACCORDANCE WITH THE LATEST EDITIONS OF THE MCGRAW-HILL FOUNDATIONS AND FOUNDATION DESIGN HANDBOOK.
18. ALL WORK SHALL BE IN ACCORDANCE WITH THE LATEST EDITIONS OF THE MCGRAW-HILL FOUNDATIONS AND FOUNDATION DESIGN HANDBOOK.
19. ALL WORK SHALL BE IN ACCORDANCE WITH THE LATEST EDITIONS OF THE MCGRAW-HILL FOUNDATIONS AND FOUNDATION DESIGN HANDBOOK.
20. ALL WORK SHALL BE IN ACCORDANCE WITH THE LATEST EDITIONS OF THE MCGRAW-HILL FOUNDATIONS AND FOUNDATION DESIGN HANDBOOK.

NOTES BY SYMBOL:

1. [Symbol] - [Description]
2. [Symbol] - [Description]
3. [Symbol] - [Description]
4. [Symbol] - [Description]
5. [Symbol] - [Description]
6. [Symbol] - [Description]
7. [Symbol] - [Description]
8. [Symbol] - [Description]
9. [Symbol] - [Description]
10. [Symbol] - [Description]
11. [Symbol] - [Description]
12. [Symbol] - [Description]
13. [Symbol] - [Description]
14. [Symbol] - [Description]
15. [Symbol] - [Description]
16. [Symbol] - [Description]
17. [Symbol] - [Description]
18. [Symbol] - [Description]
19. [Symbol] - [Description]
20. [Symbol] - [Description]

Revised
11/18/2022 9:20:04 AM
Clouded PWS/EJL/MS
CMB/22-04-00718



LEVEL 1 EAST FLOOR
PLAN - DUCTWORK

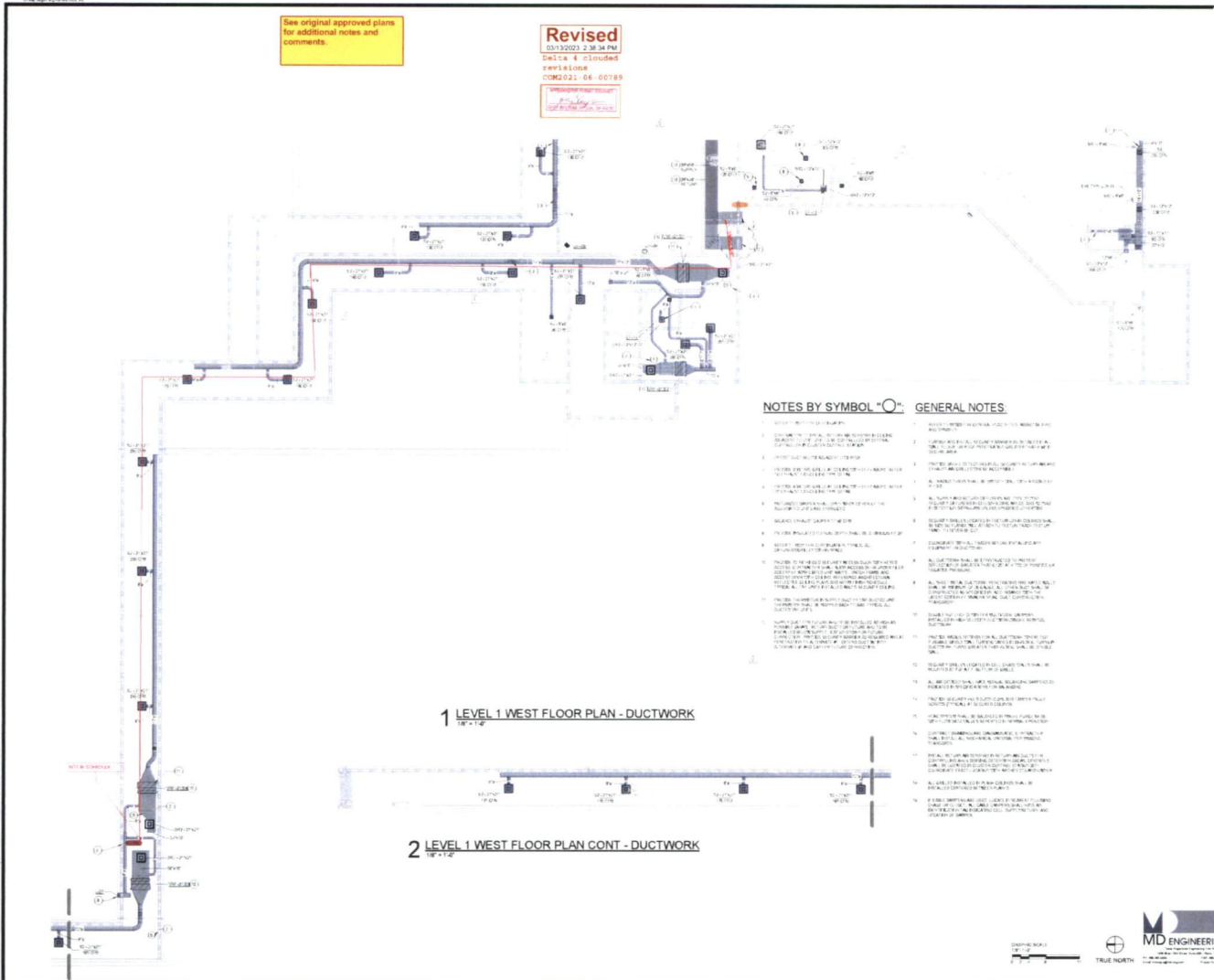
GRAPHIC SCALE
TRUE NORTH
MD ENGINEERING
1000 COMMUNITY AVE. ALEXANDRIA, VA 22304
TEL: 703.461.1000
WWW.MDENGINEERING.COM

M211

BRINKLEY SARGENT WIGGINTON ARCHITECTS
FOR BID

See original approved plans for additional notes and comments.

Revised
03/13/2023 2:38:34 PM
Delta & Clouded
revisions
COM2021-06-00789



NOTES BY SYMBOL "O": GENERAL NOTES

1. ALL WORK SHALL BE IN ACCORDANCE WITH THE LATEST EDITIONS OF THE ASHRAE HANDBOOKS AND THE SMACNA DUCTWORK HANDBOOK.
2. ALL DUCTWORK SHALL BE INSTALLED IN ACCORDANCE WITH THE SMACNA DUCTWORK HANDBOOK, 2012 EDITION, SECTION 12.10.
3. ALL DUCTWORK SHALL BE INSTALLED IN ACCORDANCE WITH THE SMACNA DUCTWORK HANDBOOK, 2012 EDITION, SECTION 12.11.
4. ALL DUCTWORK SHALL BE INSTALLED IN ACCORDANCE WITH THE SMACNA DUCTWORK HANDBOOK, 2012 EDITION, SECTION 12.12.
5. ALL DUCTWORK SHALL BE INSTALLED IN ACCORDANCE WITH THE SMACNA DUCTWORK HANDBOOK, 2012 EDITION, SECTION 12.13.
6. ALL DUCTWORK SHALL BE INSTALLED IN ACCORDANCE WITH THE SMACNA DUCTWORK HANDBOOK, 2012 EDITION, SECTION 12.14.
7. ALL DUCTWORK SHALL BE INSTALLED IN ACCORDANCE WITH THE SMACNA DUCTWORK HANDBOOK, 2012 EDITION, SECTION 12.15.
8. ALL DUCTWORK SHALL BE INSTALLED IN ACCORDANCE WITH THE SMACNA DUCTWORK HANDBOOK, 2012 EDITION, SECTION 12.16.
9. ALL DUCTWORK SHALL BE INSTALLED IN ACCORDANCE WITH THE SMACNA DUCTWORK HANDBOOK, 2012 EDITION, SECTION 12.17.
10. ALL DUCTWORK SHALL BE INSTALLED IN ACCORDANCE WITH THE SMACNA DUCTWORK HANDBOOK, 2012 EDITION, SECTION 12.18.
11. ALL DUCTWORK SHALL BE INSTALLED IN ACCORDANCE WITH THE SMACNA DUCTWORK HANDBOOK, 2012 EDITION, SECTION 12.19.
12. ALL DUCTWORK SHALL BE INSTALLED IN ACCORDANCE WITH THE SMACNA DUCTWORK HANDBOOK, 2012 EDITION, SECTION 12.20.
13. ALL DUCTWORK SHALL BE INSTALLED IN ACCORDANCE WITH THE SMACNA DUCTWORK HANDBOOK, 2012 EDITION, SECTION 12.21.
14. ALL DUCTWORK SHALL BE INSTALLED IN ACCORDANCE WITH THE SMACNA DUCTWORK HANDBOOK, 2012 EDITION, SECTION 12.22.
15. ALL DUCTWORK SHALL BE INSTALLED IN ACCORDANCE WITH THE SMACNA DUCTWORK HANDBOOK, 2012 EDITION, SECTION 12.23.
16. ALL DUCTWORK SHALL BE INSTALLED IN ACCORDANCE WITH THE SMACNA DUCTWORK HANDBOOK, 2012 EDITION, SECTION 12.24.
17. ALL DUCTWORK SHALL BE INSTALLED IN ACCORDANCE WITH THE SMACNA DUCTWORK HANDBOOK, 2012 EDITION, SECTION 12.25.
18. ALL DUCTWORK SHALL BE INSTALLED IN ACCORDANCE WITH THE SMACNA DUCTWORK HANDBOOK, 2012 EDITION, SECTION 12.26.
19. ALL DUCTWORK SHALL BE INSTALLED IN ACCORDANCE WITH THE SMACNA DUCTWORK HANDBOOK, 2012 EDITION, SECTION 12.27.
20. ALL DUCTWORK SHALL BE INSTALLED IN ACCORDANCE WITH THE SMACNA DUCTWORK HANDBOOK, 2012 EDITION, SECTION 12.28.
21. ALL DUCTWORK SHALL BE INSTALLED IN ACCORDANCE WITH THE SMACNA DUCTWORK HANDBOOK, 2012 EDITION, SECTION 12.29.
22. ALL DUCTWORK SHALL BE INSTALLED IN ACCORDANCE WITH THE SMACNA DUCTWORK HANDBOOK, 2012 EDITION, SECTION 12.30.

1 LEVEL 1 WEST FLOOR PLAN - DUCTWORK
1/8" = 1'-0"

2 LEVEL 1 WEST FLOOR PLAN CONT - DUCTWORK
1/8" = 1'-0"



BRINKLEY SARGENT WIGHTON ARCHITECTS
10000 North Loop West, Suite 1000, Houston, TX 77037
Tel: 281.441.1000
Fax: 281.441.1001
www.brinkleysargentwighton.com

**COLLIN COUNTY ADF -
PHASE 1 ADDITION**
4300 COMMUNITY AVE., MCKENNEY, TX 75071

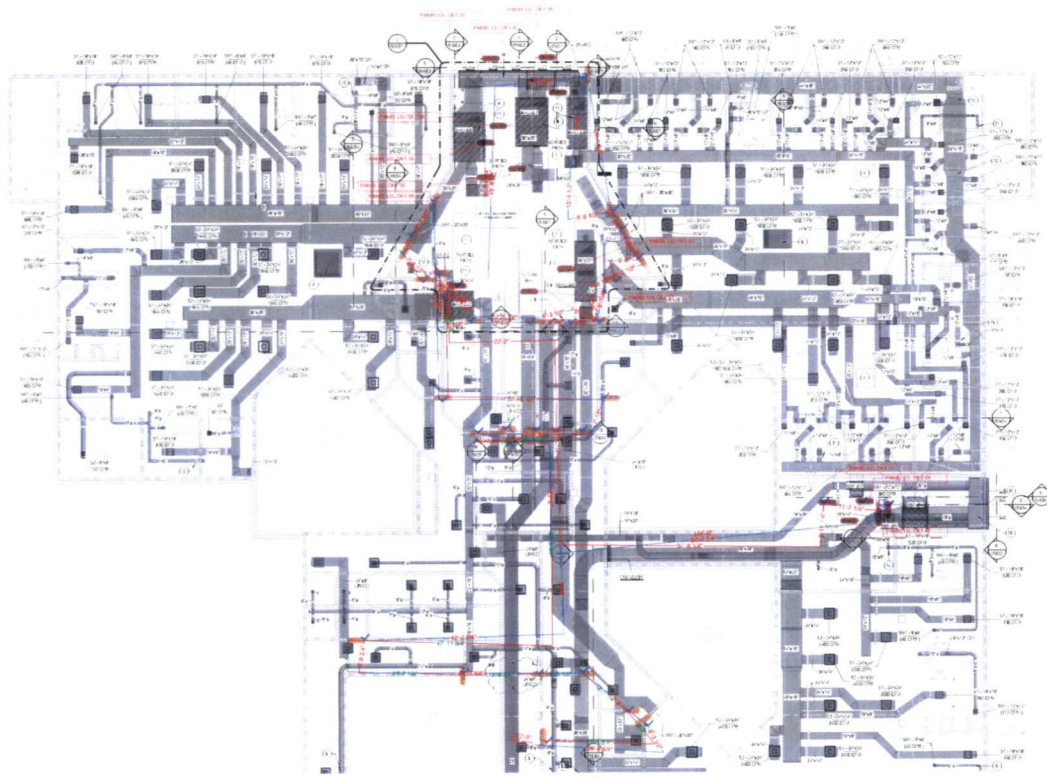
NO.	DATE	DESCRIPTION
1	03/13/2023	REVISED
2	03/13/2023	REVISED
3	03/13/2023	REVISED



LEVEL 1 WEST FLOOR
PLAN - DUCTWORK

M212

FOR BID



1 TIER LEVEL EAST FLOOR PLAN - DUCTWORK
18'-12"

Revised
03/2023 11:37 AM
Delta 4 clouded
revisions
COM213-04-00189

GENERAL NOTES

1. REFER TO ALL OTHER DRAWINGS FOR GENERAL NOTES.
2. CONTRACTOR SHALL VERIFY ALL EXISTING CONDITIONS AND REPORT ANY DISCREPANCIES TO THE ARCHITECT IMMEDIATELY.
3. ALL WORK SHALL BE IN ACCORDANCE WITH THE LATEST EDITIONS OF THE MCGRAW-HILL CONSTRUCTION DOCUMENTS.
4. ALL MATERIALS AND METHODS SHALL BE APPROVED BY THE ARCHITECT PRIOR TO INSTALLATION.
5. THE CONTRACTOR SHALL BE RESPONSIBLE FOR OBTAINING ALL NECESSARY PERMITS AND APPROVALS.
6. ALL WORK SHALL BE COMPLETED WITHIN THE SPECIFIED TIME FRAME.
7. THE CONTRACTOR SHALL MAINTAIN ACCESS TO ALL EXISTING SERVICES AND UTILITIES.
8. ALL WORK SHALL BE PROTECTED FROM DAMAGE BY OTHER TRADES.
9. THE CONTRACTOR SHALL MAINTAIN CLEAR ACCESS TO ALL EXISTING EXITS AND EGRESS ROUTES.
10. ALL WORK SHALL BE COMPLETED IN ACCORDANCE WITH ALL APPLICABLE CODES AND REGULATIONS.
11. THE CONTRACTOR SHALL BE RESPONSIBLE FOR OBTAINING ALL NECESSARY PERMITS AND APPROVALS.
12. ALL WORK SHALL BE COMPLETED WITHIN THE SPECIFIED TIME FRAME.
13. THE CONTRACTOR SHALL MAINTAIN ACCESS TO ALL EXISTING SERVICES AND UTILITIES.
14. ALL WORK SHALL BE PROTECTED FROM DAMAGE BY OTHER TRADES.
15. THE CONTRACTOR SHALL MAINTAIN CLEAR ACCESS TO ALL EXISTING EXITS AND EGRESS ROUTES.
16. ALL WORK SHALL BE COMPLETED IN ACCORDANCE WITH ALL APPLICABLE CODES AND REGULATIONS.
17. THE CONTRACTOR SHALL BE RESPONSIBLE FOR OBTAINING ALL NECESSARY PERMITS AND APPROVALS.
18. ALL WORK SHALL BE COMPLETED WITHIN THE SPECIFIED TIME FRAME.
19. THE CONTRACTOR SHALL MAINTAIN ACCESS TO ALL EXISTING SERVICES AND UTILITIES.
20. ALL WORK SHALL BE PROTECTED FROM DAMAGE BY OTHER TRADES.
21. THE CONTRACTOR SHALL MAINTAIN CLEAR ACCESS TO ALL EXISTING EXITS AND EGRESS ROUTES.
22. ALL WORK SHALL BE COMPLETED IN ACCORDANCE WITH ALL APPLICABLE CODES AND REGULATIONS.
23. THE CONTRACTOR SHALL BE RESPONSIBLE FOR OBTAINING ALL NECESSARY PERMITS AND APPROVALS.
24. ALL WORK SHALL BE COMPLETED WITHIN THE SPECIFIED TIME FRAME.
25. THE CONTRACTOR SHALL MAINTAIN ACCESS TO ALL EXISTING SERVICES AND UTILITIES.
26. ALL WORK SHALL BE PROTECTED FROM DAMAGE BY OTHER TRADES.
27. THE CONTRACTOR SHALL MAINTAIN CLEAR ACCESS TO ALL EXISTING EXITS AND EGRESS ROUTES.
28. ALL WORK SHALL BE COMPLETED IN ACCORDANCE WITH ALL APPLICABLE CODES AND REGULATIONS.
29. THE CONTRACTOR SHALL BE RESPONSIBLE FOR OBTAINING ALL NECESSARY PERMITS AND APPROVALS.
30. ALL WORK SHALL BE COMPLETED WITHIN THE SPECIFIED TIME FRAME.

NOTES BY SYMBOL

1. ALL DUCTWORK SHALL BE INSTALLED IN ACCORDANCE WITH THE LATEST EDITIONS OF THE MCGRAW-HILL CONSTRUCTION DOCUMENTS.
2. ALL DUCTWORK SHALL BE PROTECTED FROM DAMAGE BY OTHER TRADES.
3. THE CONTRACTOR SHALL MAINTAIN CLEAR ACCESS TO ALL EXISTING EXITS AND EGRESS ROUTES.
4. ALL WORK SHALL BE COMPLETED IN ACCORDANCE WITH ALL APPLICABLE CODES AND REGULATIONS.
5. THE CONTRACTOR SHALL BE RESPONSIBLE FOR OBTAINING ALL NECESSARY PERMITS AND APPROVALS.
6. ALL WORK SHALL BE COMPLETED WITHIN THE SPECIFIED TIME FRAME.
7. THE CONTRACTOR SHALL MAINTAIN ACCESS TO ALL EXISTING SERVICES AND UTILITIES.
8. ALL WORK SHALL BE PROTECTED FROM DAMAGE BY OTHER TRADES.
9. THE CONTRACTOR SHALL MAINTAIN CLEAR ACCESS TO ALL EXISTING EXITS AND EGRESS ROUTES.
10. ALL WORK SHALL BE COMPLETED IN ACCORDANCE WITH ALL APPLICABLE CODES AND REGULATIONS.
11. THE CONTRACTOR SHALL BE RESPONSIBLE FOR OBTAINING ALL NECESSARY PERMITS AND APPROVALS.
12. ALL WORK SHALL BE COMPLETED WITHIN THE SPECIFIED TIME FRAME.
13. THE CONTRACTOR SHALL MAINTAIN ACCESS TO ALL EXISTING SERVICES AND UTILITIES.
14. ALL WORK SHALL BE PROTECTED FROM DAMAGE BY OTHER TRADES.
15. THE CONTRACTOR SHALL MAINTAIN CLEAR ACCESS TO ALL EXISTING EXITS AND EGRESS ROUTES.
16. ALL WORK SHALL BE COMPLETED IN ACCORDANCE WITH ALL APPLICABLE CODES AND REGULATIONS.
17. THE CONTRACTOR SHALL BE RESPONSIBLE FOR OBTAINING ALL NECESSARY PERMITS AND APPROVALS.
18. ALL WORK SHALL BE COMPLETED WITHIN THE SPECIFIED TIME FRAME.
19. THE CONTRACTOR SHALL MAINTAIN ACCESS TO ALL EXISTING SERVICES AND UTILITIES.
20. ALL WORK SHALL BE PROTECTED FROM DAMAGE BY OTHER TRADES.
21. THE CONTRACTOR SHALL MAINTAIN CLEAR ACCESS TO ALL EXISTING EXITS AND EGRESS ROUTES.
22. ALL WORK SHALL BE COMPLETED IN ACCORDANCE WITH ALL APPLICABLE CODES AND REGULATIONS.
23. THE CONTRACTOR SHALL BE RESPONSIBLE FOR OBTAINING ALL NECESSARY PERMITS AND APPROVALS.
24. ALL WORK SHALL BE COMPLETED WITHIN THE SPECIFIED TIME FRAME.
25. THE CONTRACTOR SHALL MAINTAIN ACCESS TO ALL EXISTING SERVICES AND UTILITIES.
26. ALL WORK SHALL BE PROTECTED FROM DAMAGE BY OTHER TRADES.
27. THE CONTRACTOR SHALL MAINTAIN CLEAR ACCESS TO ALL EXISTING EXITS AND EGRESS ROUTES.
28. ALL WORK SHALL BE COMPLETED IN ACCORDANCE WITH ALL APPLICABLE CODES AND REGULATIONS.
29. THE CONTRACTOR SHALL BE RESPONSIBLE FOR OBTAINING ALL NECESSARY PERMITS AND APPROVALS.
30. ALL WORK SHALL BE COMPLETED WITHIN THE SPECIFIED TIME FRAME.

**COLLIN COUNTY ADF -
PHASE 1 ADDITION**

BRINLEY SARGENT WIGHTON ARCHITECTS

4000 COMMUNITY AVE. MCKENNEY, TX 75201

DATE	DESCRIPTION
03/2023	ISSUED FOR BIDDING
03/2023	REVISIONS
03/2023	REVISIONS



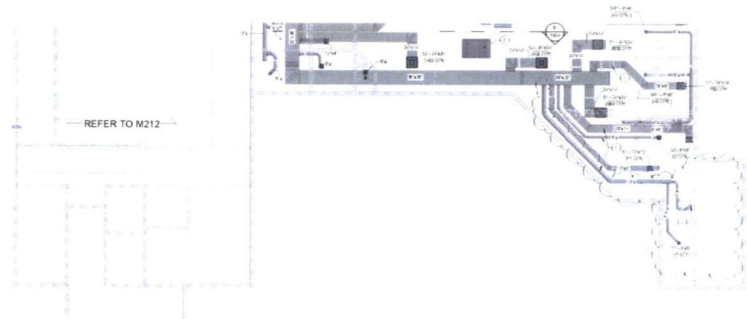
TIER LEVEL EAST FLOOR PLAN - DUCTWORK

MZZ1

FOR BID



MD ENGINEERING
12345 MAIN ST
DALLAS, TX 75201
TEL: 214-123-4567
WWW.MDENGINEERING.COM



NOTES BY SYMBOL

- 1. (Symbol) ...
- 2. (Symbol) ...
- 3. (Symbol) ...
- 4. (Symbol) ...
- 5. (Symbol) ...
- 6. (Symbol) ...
- 7. (Symbol) ...
- 8. (Symbol) ...
- 9. (Symbol) ...
- 10. (Symbol) ...
- 11. (Symbol) ...
- 12. (Symbol) ...
- 13. (Symbol) ...
- 14. (Symbol) ...
- 15. (Symbol) ...
- 16. (Symbol) ...
- 17. (Symbol) ...
- 18. (Symbol) ...
- 19. (Symbol) ...
- 20. (Symbol) ...
- 21. (Symbol) ...
- 22. (Symbol) ...

GENERAL NOTES

- 1. ALL WORK SHALL BE IN ACCORDANCE WITH THE LATEST EDITIONS OF THE MCGRAW-HILL BUILDING CONSTRUCTION CODES AND SPECIFICATIONS.
- 2. THE CONTRACTOR SHALL BE RESPONSIBLE FOR OBTAINING ALL NECESSARY PERMITS AND APPROVALS FROM THE LOCAL AUTHORITIES.
- 3. ALL MATERIALS AND WORKMANSHIP SHALL BE SUBJECT TO INSPECTION AND APPROVAL BY THE LOCAL AUTHORITIES.
- 4. THE CONTRACTOR SHALL MAINTAIN ACCESS TO ALL EXISTING UTILITIES AND SERVICES AT ALL TIMES.
- 5. ALL WORK SHALL BE COMPLETED WITHIN THE SPECIFIED TIME FRAME.
- 6. THE CONTRACTOR SHALL BE RESPONSIBLE FOR PROTECTING ALL EXISTING STRUCTURES AND UTILITIES.
- 7. ALL WORK SHALL BE DONE IN ACCORDANCE WITH THE LATEST EDITIONS OF THE MCGRAW-HILL BUILDING CONSTRUCTION CODES AND SPECIFICATIONS.
- 8. THE CONTRACTOR SHALL MAINTAIN ACCESS TO ALL EXISTING UTILITIES AND SERVICES AT ALL TIMES.
- 9. ALL WORK SHALL BE COMPLETED WITHIN THE SPECIFIED TIME FRAME.
- 10. THE CONTRACTOR SHALL BE RESPONSIBLE FOR PROTECTING ALL EXISTING STRUCTURES AND UTILITIES.
- 11. ALL WORK SHALL BE DONE IN ACCORDANCE WITH THE LATEST EDITIONS OF THE MCGRAW-HILL BUILDING CONSTRUCTION CODES AND SPECIFICATIONS.
- 12. THE CONTRACTOR SHALL MAINTAIN ACCESS TO ALL EXISTING UTILITIES AND SERVICES AT ALL TIMES.
- 13. ALL WORK SHALL BE COMPLETED WITHIN THE SPECIFIED TIME FRAME.
- 14. THE CONTRACTOR SHALL BE RESPONSIBLE FOR PROTECTING ALL EXISTING STRUCTURES AND UTILITIES.
- 15. ALL WORK SHALL BE DONE IN ACCORDANCE WITH THE LATEST EDITIONS OF THE MCGRAW-HILL BUILDING CONSTRUCTION CODES AND SPECIFICATIONS.
- 16. THE CONTRACTOR SHALL MAINTAIN ACCESS TO ALL EXISTING UTILITIES AND SERVICES AT ALL TIMES.
- 17. ALL WORK SHALL BE COMPLETED WITHIN THE SPECIFIED TIME FRAME.
- 18. THE CONTRACTOR SHALL BE RESPONSIBLE FOR PROTECTING ALL EXISTING STRUCTURES AND UTILITIES.
- 19. ALL WORK SHALL BE DONE IN ACCORDANCE WITH THE LATEST EDITIONS OF THE MCGRAW-HILL BUILDING CONSTRUCTION CODES AND SPECIFICATIONS.
- 20. THE CONTRACTOR SHALL MAINTAIN ACCESS TO ALL EXISTING UTILITIES AND SERVICES AT ALL TIMES.
- 21. ALL WORK SHALL BE COMPLETED WITHIN THE SPECIFIED TIME FRAME.
- 22. THE CONTRACTOR SHALL BE RESPONSIBLE FOR PROTECTING ALL EXISTING STRUCTURES AND UTILITIES.

1 TIER LEVEL WEST FLOOR PLAN - DUCTWORK
1/8" = 1'-0"



TIER LEVEL WEST FLOOR PLAN - DUCTWORK

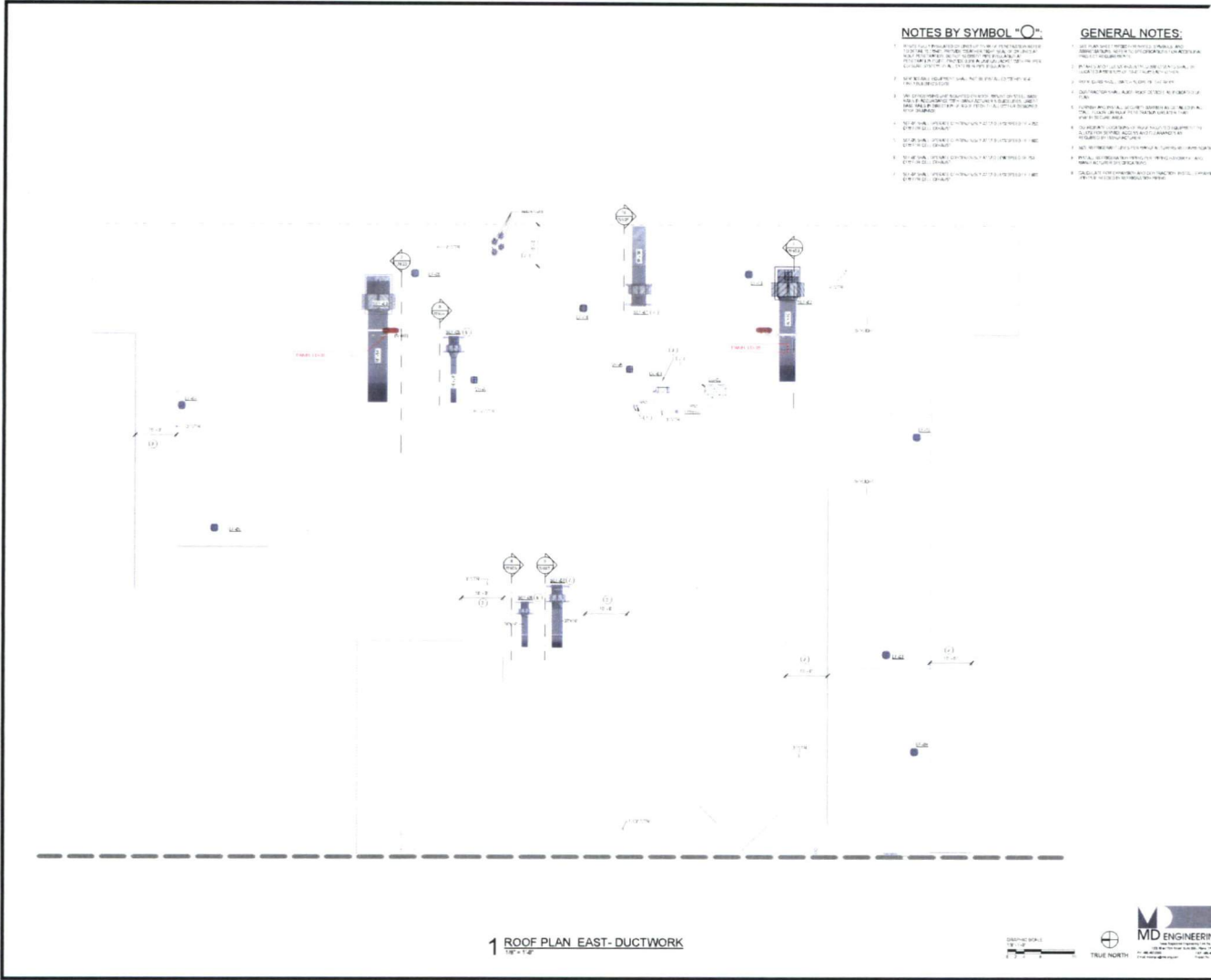
DATE: 01/20/22 PROJECT: M222

COLLIN COUNTY ADF - PHASE 1 ADDITION

4506 COMMUNITY AVE., MCKINNEY, TX 75071

BRINKLEY SARGENT WIGHTON ARCHITECTS

BRINKLEY SARGENT WIGHTON ARCHITECTS
1100 WEST WYOMING STREET, SUITE 100
DALLAS, TEXAS 75201
TEL: 214.343.1100
WWW.BSWA.COM



1 ROOF PLAN EAST-DUCTWORK
1/8" = 1'-0"

NOTES BY SYMBOL "O"

- 1. ALL DUCTWORK SHALL BE INSTALLED IN ACCORDANCE WITH THE MANUFACTURER'S INSTALLATION INSTRUCTIONS AND THE 2018 INTERNATIONAL MECHANICAL CODE (IMC).
- 2. ALL DUCTWORK SHALL BE INSTALLED IN ACCORDANCE WITH THE 2018 INTERNATIONAL MECHANICAL CODE (IMC).
- 3. ALL DUCTWORK SHALL BE INSTALLED IN ACCORDANCE WITH THE 2018 INTERNATIONAL MECHANICAL CODE (IMC).
- 4. ALL DUCTWORK SHALL BE INSTALLED IN ACCORDANCE WITH THE 2018 INTERNATIONAL MECHANICAL CODE (IMC).
- 5. ALL DUCTWORK SHALL BE INSTALLED IN ACCORDANCE WITH THE 2018 INTERNATIONAL MECHANICAL CODE (IMC).
- 6. ALL DUCTWORK SHALL BE INSTALLED IN ACCORDANCE WITH THE 2018 INTERNATIONAL MECHANICAL CODE (IMC).
- 7. ALL DUCTWORK SHALL BE INSTALLED IN ACCORDANCE WITH THE 2018 INTERNATIONAL MECHANICAL CODE (IMC).

GENERAL NOTES:

- 1. ALL WORK SHALL BE INSTALLED IN ACCORDANCE WITH THE 2018 INTERNATIONAL MECHANICAL CODE (IMC).
- 2. ALL WORK SHALL BE INSTALLED IN ACCORDANCE WITH THE 2018 INTERNATIONAL MECHANICAL CODE (IMC).
- 3. ALL WORK SHALL BE INSTALLED IN ACCORDANCE WITH THE 2018 INTERNATIONAL MECHANICAL CODE (IMC).
- 4. ALL WORK SHALL BE INSTALLED IN ACCORDANCE WITH THE 2018 INTERNATIONAL MECHANICAL CODE (IMC).
- 5. ALL WORK SHALL BE INSTALLED IN ACCORDANCE WITH THE 2018 INTERNATIONAL MECHANICAL CODE (IMC).
- 6. ALL WORK SHALL BE INSTALLED IN ACCORDANCE WITH THE 2018 INTERNATIONAL MECHANICAL CODE (IMC).
- 7. ALL WORK SHALL BE INSTALLED IN ACCORDANCE WITH THE 2018 INTERNATIONAL MECHANICAL CODE (IMC).

**COLLIN COUNTY ADF -
PHASE 1 ADDITION**

405 COMBINEE AVE. ARLINGTON, TX 76011

MD ENGINEERING

ROOF PLAN EAST-DUCTWORK

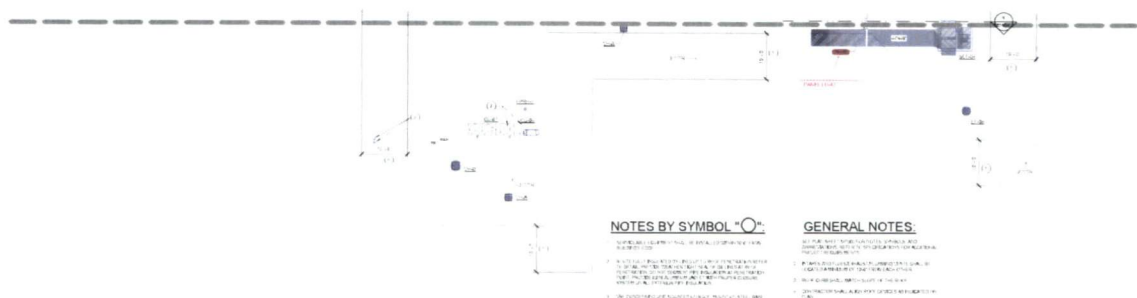
M231

BRINKLEY SARGENT WIGHTON ARCHITECTS

FOR BID

**COLLIN COUNTY ADF -
PHASE 1 ADDITION**

4450 COMMUNITY AVE. WICKLIFFE, TX 75097



NOTES BY SYMBOL "O"

- 1. ALL DAMPER SCHEDULES SHALL BE INSTALLED IN THE ROOF.
- 2. ALL DAMPER SCHEDULES SHALL BE INSTALLED IN THE ROOF.
- 3. ALL DAMPER SCHEDULES SHALL BE INSTALLED IN THE ROOF.

GENERAL NOTES:

- 1. ALL DAMPER SCHEDULES SHALL BE INSTALLED IN THE ROOF.
- 2. ALL DAMPER SCHEDULES SHALL BE INSTALLED IN THE ROOF.
- 3. ALL DAMPER SCHEDULES SHALL BE INSTALLED IN THE ROOF.
- 4. ALL DAMPER SCHEDULES SHALL BE INSTALLED IN THE ROOF.
- 5. ALL DAMPER SCHEDULES SHALL BE INSTALLED IN THE ROOF.

MOTORIZED DAMPER SCHEDULE

ITEM	SERVES	ZONE	ELECTRICAL			CIRCUIT	C/B	WIRE & CONDUIT	DISCONNECT	
			VPH	MCA	MOCP					
M-1A	LI	AHU-41	5	120/1	0.5	15	ON LC-57	15/1	2 #12, 1 #12G, 3/4" C	RECEPTACLE
M-1B	LL	AHU-41	5	120/1	0.5	15				
M-1C	LL	AHU-41	5	120/1	0.5	15				
M-1D	LL	SSF-05	5	120/1	0.5	15				
M-2A	LI	AHU-42	5	120/1	0.5	15				
M-2B	LI	AHU-42	5	120/1	0.5	15	ON LC-59	15/1	2 #12, 1 #12G, 3/4" C	RECEPTACLE
M-2C	LL	AHU-42	5	120/1	0.5	15				
M-2D	TL	SSF-06	5	120/1	0.5	15				
M-3A	LI	AHU-43	7	120/1	0.5	15				
M-3B	LI	AHU-43	7	120/1	0.5	15	ON LC-71	15/1	2 #12, 1 #12G, 3/4" C	RECEPTACLE
M-3C	TL	AHU-43	7	120/1	0.5	15				
M-3D	TL	SSF-07	7	120/1	0.5	15				
M-6A	TL	AHU-46	3	120/1	0.5	15				
M-6B	TL	AHU-46	3	120/1	0.5	15	ON LD-35	15/1	2 #12, 1 #12G, 3/4" C	RECEPTACLE
M-6C	TL	AHU-46	3	120/1	0.5	15				
M-6D	TL	SSF-08	3	120/1	0.5	15				
M-6E	TL	SSF-09	3	120/1	0.5	15				
M-6F	TL	SSF-10	3	120/1	0.5	15				
M-7B	ROOF	AHU-47	2	120/1	0.5	15				
M-7C	TL	AHU-47	2	120/1	0.5	15	ON LD-38	15/1	2 #12, 1 #12G, 3/4" C	RECEPTACLE
M-7D	TL	SEF-02	2	120/1	0.5	15				
M-7E	TL	AHU-47	2	120/1	0.5	15				
M-8A	TL	SSF-01	1	120/1	0.5	15				
M-8B	TL	AHU-48	1	120/1	0.5	15	ON LD-40	15/1	2 #12, 1 #12G, 3/4" C	RECEPTACLE
M-8C	TL	AHU-48	1	120/1	0.5	15				
M-8D	TL	AHU-48	1	120/1	0.5	15				
M-8E	TL	AHU-48	1	120/1	0.5	15				
M-8F	TL	AHU-48	1	120/1	0.5	15				
M-8G	ROOF	SEF-04	4	120/1	0.5	15	ON LD-42	15/1	2 #12, 1 #12G, 3/4" C	RECEPTACLE
M-8H	TL	AHU-49	4	120/1	0.5	15				
M-8I	TL	SSF-04	4	120/1	0.5	15				
M-8J	TL	AHU-42	2	120/1	0.5	15				

1 ROOF PLAN WEST-DUCTWORK
1/8" = 1'-0"

MD ENGINEERING
7333
10/2018



ROOF PLAN WEST-DUCTWORK

DATE: 10/20/18
M232

FOR BID