



PCO #096

Ratcliff Constructors, LP
 4200 Beltway Drive
 Addison, Texas 75001
 Phone: (972) 432-9969
 Fax: (972) 432-9943

Project: 21-501 - Collin County Adult Detention Facility, Phase 1 Addition
 4300 Community Avenue
 McKinney, Texas 75071

Prime Contract Potential Change Order #096: RFI #280 Add Lights in Elevator Pit

TO:	Collin County 4600 Community Avenue McKinney Texas, 75071	FROM:	Ratcliff Constructors, LP 4200 Beltway Drive Addison Texas, 75001
PCO NUMBER/REVISION:	096 / 1	CONTRACT:	1 - Collin County Adult Detention Facility, Phase 1 Addition Prime Contract
REQUEST RECEIVED FROM:		CREATED BY:	CJ Perry (Ratcliff Constructors, LP)
STATUS:	Pending - In Review	CREATED DATE:	3/15 /2024
REFERENCE:		PRIME CONTRACT CHANGE ORDER:	
FIELD CHANGE:	No	ACCOUNTING METHOD:	Amount Based
LOCATION:		PAID IN FULL:	No
SCHEDULE IMPACT:		TOTAL AMOUNT:	\$4,749.32

POTENTIAL CHANGE ORDER TITLE: RFI #280 Add Lights in Elevator Pit

CHANGE REASON: Allowance

POTENTIAL CHANGE ORDER DESCRIPTION: *(The Contract Is Changed As Follows)*
 RFI #280 Add Lights in Elevator Pit

Provide for additional materials, labor, and equipment required to add (2) type F lights in the elevator pit per RFI #280. See backup.

3/22/24 - See attached revised PCO including additional backup and revised pricing for equipment (reduced) and materials required but not captured in original PCO.

ATTACHMENTS:

#	Cost Code	Description	Type	Amount
1	26-103 - Fiber Optic Cabling	Add Type F Lights in Elevator Pit	Subcontractor	\$ 4,264.27
2		Ratcliff Bonds (1.25%)		\$ 53.30
3		Ratcliff Fee (10.00%)		\$ 431.75
Subtotal:				\$4,749.32
Grand Total:				\$4,749.32

Michael Woods (Brinkley Sargent Wiginton Architects)
 5000 Quorum Drive, Suite 600
 Dallas Texas 75254

Collin County
 4600 Community Avenue
 McKinney Texas 75071

Ratcliff Constructors, LP
 4200 Beltway Drive
 Addison Texas 75001

 3-25-2024
 SIGNATURE DATE

 SIGNATURE DATE


 SIGNATURE DATE

CO-019

SHEET 1 OF 1

PROJECT NAME Collin County ADF PROJECT NO. 23005 WE DATE _____ WORK PERFORMED _____ PHASE CODE: _____

DESCRIPTION OF WORK Add lights and maintenance GFCI receptacle at elevator pit per RFI#280

FOR Chris Perry Jr. EWA NO. _____ AUTHORIZED BY _____

LABOR													Material				EQUIPMENT					
EMPLOYEE NAME	EMP CLASS	STRAIGHT TIME		PREMIUM TIME		PER-DIEM		OVERTIME		QUANTITY	DESCRIPTION	UNIT PRICE	U M	EXTENDED AMOUNT	DESCRIPTION	EQUIP TYPE	MO	RATE	AMOUNT			
		HOURS	RATE	AMOUNT	HOURS	RATE	AMOUNT	Days	RATE	AMOUNT	HOURS	RATE	AMOUNT									
Site Project Manager	PM	3	\$95.10	\$285.30	\$0.00	\$0.00	\$0.00	\$0.00	\$135.40	\$0.00	1	Material Greensheets	\$1,025.29	E	\$1,025.29	Mini Excavator	T	0	\$0.00	\$0.00		
Journeyman	JM	21	\$51.21	\$1,075.41	\$0.00	\$0.00	\$0.00	\$0.00	\$72.91	\$0.00					\$0.00	Skidsteer	T	0	\$0.00	\$0.00		
Helper	HP	20.98	\$38.04	\$798.08	\$0.00	\$0.00	\$0.00	\$0.00	\$54.16	\$0.00					\$0.00	Jackhammer	T	0	\$0.00	\$0.00		
			\$0.00	\$0.00	\$0.00	\$0.00	\$0.00	\$0.00	\$0.00	\$0.00					\$0.00	Packer	T	0	\$0.00	\$0.00		
			\$0.00	\$0.00	\$0.00	\$0.00	\$0.00	\$0.00	\$0.00	\$0.00					\$0.00	Core Drill	T	0	\$850.00	\$0.00		
			\$0.00	\$0.00	\$0.00	\$0.00	\$0.00	\$0.00	\$0.00	\$0.00					\$0.00	Scissor Lift	T	0.3	\$1,050.00	\$315.00		
			\$0.00	\$0.00	\$0.00	\$0.00	\$0.00	\$0.00	\$0.00	\$0.00					\$0.00	Company Truck	C	0.3	\$750.00	\$225.00		
			\$0.00	\$0.00	\$0.00	\$0.00	\$0.00	\$0.00	\$0.00	\$0.00					\$0.00	cable tugger	T	0	\$1,283.00	\$0.00		
			\$0.00	\$0.00	\$0.00	\$0.00	\$0.00	\$0.00	\$0.00	\$0.00					\$0.00	Freight for 3rd Party				\$ 50.00		
			\$0.00	\$0.00	\$0.00	\$0.00	\$0.00	\$0.00	\$0.00	\$0.00					\$0.00	Fuel, Oil & Lube for 3rd Party				\$ -		
Straight Time Labor - Sheet Sub-Total										44.98	\$	2,158.79	Sheet Sub-Total		\$	1,025.29	T" 3rd Party Equip. - Sheet Sub-Total		\$	365.00		
Premium Time Labor - Sheet Sub-Total										N/A	\$	-	Freight		\$	-	Markup - 3rd Party Only		0.00%	\$ -		
Overtime Labor - Sheet Sub-Total										0	\$	-	Markup		10.00%	\$	102.53	Equipment Tax - 3rd Party		0.00%	\$ -	
Per-Diem - Sheet Sub-Total											\$	-	Sales Tax		\$	-	"C" Company Owned - Sheet Sub-Total		\$	225.00		
TOTAL LABOR (This Sheet)										44.98	\$	2,158.79	TOTAL		\$	1,127.82	TOTAL EQUIPMENT (This Sheet)		\$	590.00		
																				\$	3,876.61	
																			OH	0.00%	\$ -	
																			Markup	10.00%	\$ 387.88	
																			GRAND TOTAL		\$	4,264.27

IN LIEU OF SIGNATURE, PLEASE ADVISE IMMEDIATELY IF ANY OF THE ABOVE DOES NOT AGREE WITH YOUR RECORDS.

APPROVED _____ DATE _____

BY _____ CLIENT AUTHORIZED EXTRA WORK APPROVER

REMARKS _____

GREEN SHEETS

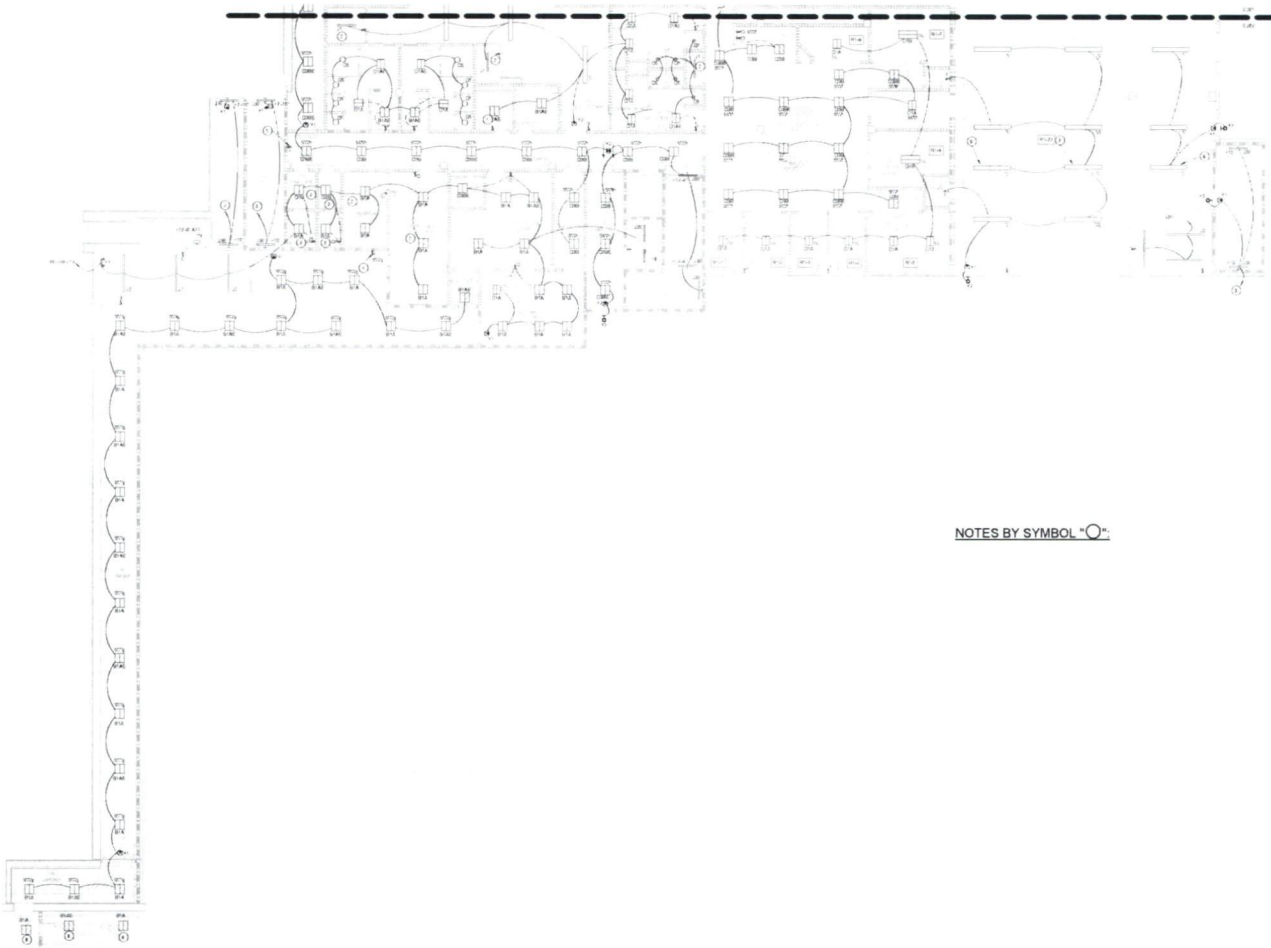
Project Name

ELECTRICAL

Last Verification:

12/03/2013 10:05 AM

Proposal No.			ESTIMATOR	41.98			S1,025.29			
NO.	CODE	DET QTY	MATERIAL/DESCRIPTION	QUANTITY	LABOR UNIT	U/M	LABOR EXTENSION	MATERIAL PRICE	U/M	MATERIAL EXTENSION
2 type F fixtures										
	75FMT	90	3/4" Emt Conduit	90	0.045	FT	4.05	\$1.80	FT	\$162
	75CON	10	3/4" Emt Connectors	10	0.060	EA	0.60	\$0.70	EA	\$7
	75ECP	10	3/4" Emt Couplings	10	0.030	EA	0.30	\$0.80	EA	\$8
	7018	4	3/4" hole bell box	4	0.070	EA	4.54	\$4.54	EA	\$18
	7019	2	bell box cover	2	0.070	EA	0.85	\$0.85	EA	\$2
	12AWG	270	#12 Cu Stranded	270	0.010	FT	2.70	\$0.24	FT	\$65
	T12	12	Termination Lug & Brady Label - #12	12	0.220	EA	2.64	\$1.50	EA	\$18
	100K	2	TYPE F FIXTURE	2	0.500	EA	1.00	\$55.15	EA	\$110
	LSWCH	1	Light Switch	1	0.400	EA	0.40	\$14.00	EA	\$14
	SWCHCPL	1	Light Switch Cover Plate	1	0.150	EA	0.15	\$8.00	EA	\$8
	75es	12	3/4" Emt Support	12	0.100	EA	1.20	\$0.40	EA	\$5
120V dedicated circuit for GFCI inside pit.										
	75FMT	180	3/4" Emt Conduit	180	0.045	FT	8.10	\$1.80	FT	\$324
	75CON	25	3/4" Emt Connectors	25	0.060	EA	1.50	\$0.70	EA	\$18
	75ECP	8	3/4" Emt Couplings	8	0.030	EA	0.24	\$0.80	EA	\$6
	7018	2	3/4" hole bell box	2	0.700	EA	1.40	\$4.54	EA	\$9
	7019	2	bell box cover	2	0.700	EA	1.40	\$0.85	EA	\$2
	10AWG	480	#10 Cu Stranded	480	0.012	FT	5.76	\$0.34	FT	\$163
	T10	6	Termination Lug & Brady Label - #10	6	0.250	EA	1.50	\$1.00	EA	\$6
	RECGFCI	1	Receptacle - GFCI	1	0.500	EA	0.50	\$14.44	EA	\$14
	RECP	1	Receptacle Cover Plate	1	0.150	EA	0.15	\$8.00	EA	\$8
	75ES	25	3/4" Emt Support	25	0.100	EA	2.50	\$0.40	EA	\$10
	1018	1	20 A breaker	1	0.500	EA	0.50	\$48.21	EA	\$48



NOTES BY SYMBOL "O"

Cooper Lighting Solutions - ALL-PRO™

DESCRIPTION

The ALL-PRO™ LED Vapor tight Floodlight provides an indoor/outdoor solution in applications where lighting fixture protection is required. The fixture provides equivalent light output up to 100-watt incandescent and 23-watt CFL fixtures, with high-quality and long lasting illumination. The fixture is vapor tight to protect against dust and moisture. Ideal for patios, garages, storage, and industrial areas. This fixture's traditional look and warm color temperature gives consumers the comfort of lighting they are used to.

Catalog #		Type
Project		
Comments		Date
Prepared by		

SPECIFICATION FEATURES

Construction

- Durable die-cast aluminum housing and cage provides protection against vandalism
- Vapor tight IP65 rating protects against dust and moisture
- Versatile mounting options – Wall, Ceiling and Post
- Frosted glass lens
- (5) 1/2 NPT Conduit openings

Electrical

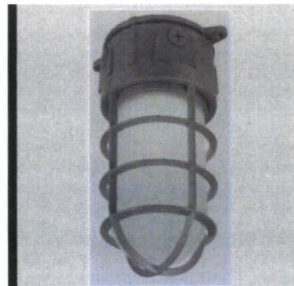
- Maintenance-free LEDs with L70 50,000 hours of life
- Universal 120-277V power supply
- Fixture operating temperature range from -20°C to 40°C
- cULus listed for wet locations

Optics

- 3500K color temperature
- Fixture produces up to 1450 Lumens

Warranty

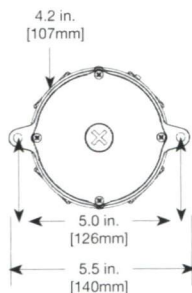
- 5 year limited warranty



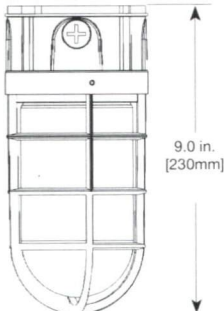
LED VAPOR TIGHT FLOODLIGHT

DIMENSIONS

Top View



Side View



ORDERING INFORMATION

Sample Number: VT1730



Application

VT = Vapor Tight



Series

17 = 17Watts



Color Temperature

30 = 3500K

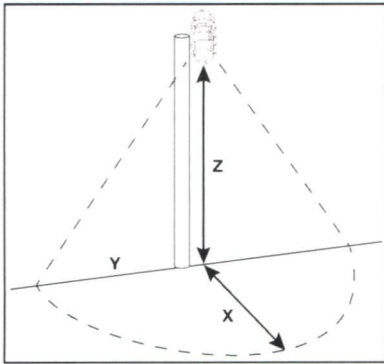
CERTIFICATION DATA

cULus Wet Location Listed
Lighting Facts® Approved

TECHNICAL DATA

-20°C to 40°C Temperature Rating
Wall, Ceiling, and Post Mount

PHOTOMETRICS



		.25 Fc Coverage Area					
		8'		10'		15'	
Model Number	Lumens	X	Y	X	Y	X	Y
VT1730	1496	15	34	15	36	14	37

Technical Information

Model Number	Description	Voltage (V)	Power (W)	Delivered Lumens	Efficacy (Lum/Watt)	LED Color Temperature (K)	CRI
VT1730	ALL-PRO LED Vapor Tight Floodlight	120-277V	17.7	1450	82	3500K	80



Ratcliff Constructors, LP
 4200 Beltway Drive
 Addison, Texas 75001
 P: (972) 432-9969
 F: (972) 432-9943

**Project: 21-501 Collin County Adult Detention
 Facility, Phase 1 Addition**
 4300 Community Avenue
 McKinney, Texas 75071

RFI #280: Elevator Pit Light Fixture Clarification

Status	Open		
To	Michael Woods (Brinkley Sargent Wiginton Architects) Jason Mansur (MD Engineering, LLP - MEP Engineer) <i>(Response Required)</i>	From	Zach Reynolds (Ratcliff Constructors, LP) 4200 Beltway Drive Addison, Texas 75001
Date Initiated	Mar 5, 2024	Due Date	Mar 12, 2024
Location		Project Stage	
Cost Impact		Schedule Impact	
Spec Section		Cost Code	
Drawing Number		Reference	
Linked Drawings			
Received From	Julio Torres (BTX Construction Group LLC)		
Copies To	Jason Crawford (Ratcliff Constructors, LP), CJ Perry (Ratcliff Constructors, LP), Shane Worley (Ratcliff Constructors, LP)		

Activity

Question **Question from Zach Reynolds Ratcliff Constructors, LP on Tuesday, Mar 5, 2024 at 09:33 AM CST**
 Jason,
 Per our RFI review on 2/27/24, you instructed the electrician to install two jelly jar light fixtures in the elevator pit. Please confirm if the fixture you reference was the type F jelly jar light.

Official Response **Response from Jason Mansur MD Engineering, LLP - MEP Engineer on Wednesday, Mar 6, 2024 at 12:03 PM CST**
 Yes, Utilize the F fixture on the schedule.

All Replies **Response from Jason Mansur MD Engineering, LLP - MEP Engineer on Wednesday, Mar 6, 2024 at 12:03 PM CST**
 Yes, Utilize the F fixture on the schedule.