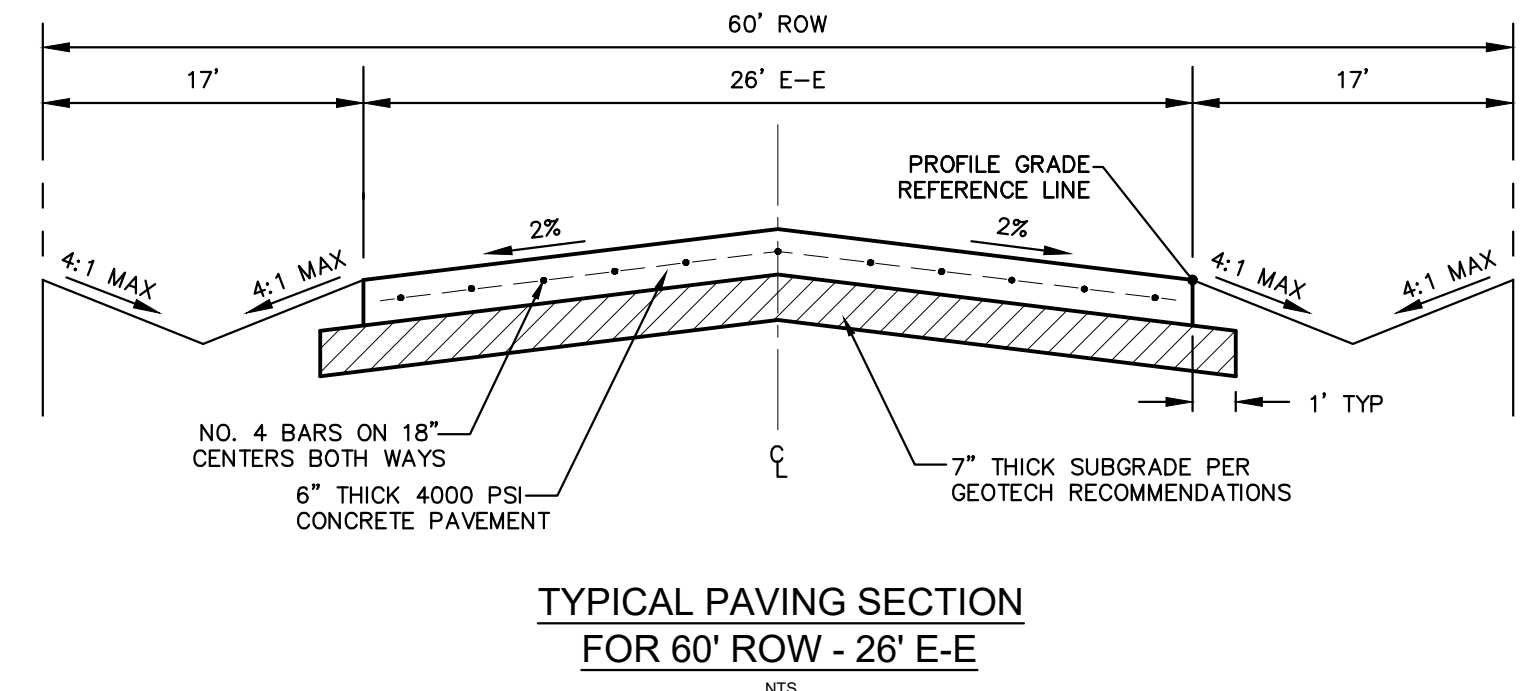
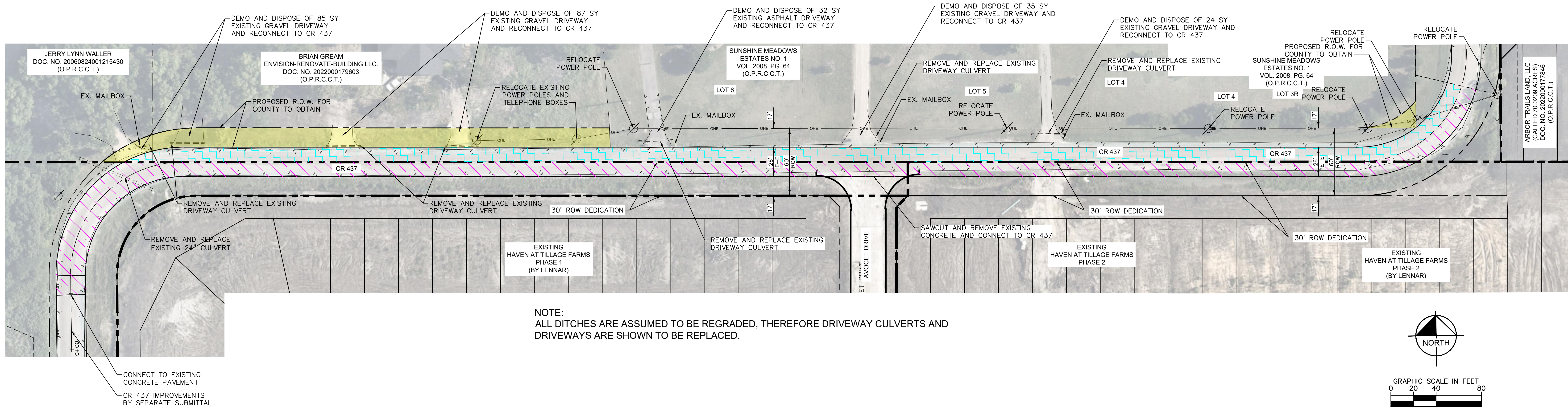


HATCH LEGEND

	COUNTY SHARED PORTION
	LENNAR SHARED PORTION
	ROW FOR COUNTY TO OBTAIN



**CR 437
ESCROW
LENNAR**
Collin County, Texas
May 2024

Kimley»Horn
400 North Oklahoma Drive, Suite 105
Celina, TX 75009
469-501-2200
State of Texas Registration No. F-928

NOTES:
1. THIS PLAN IS CONCEPTUAL IN NATURE AND HAS BEEN PRODUCED WITHOUT THE BENEFIT OF A SURVEY OR CONTACT WITH THE CITY, COUNTY, ETC.
2. AERIAL IMAGE BY NEARMAP, COPYRIGHT 2023