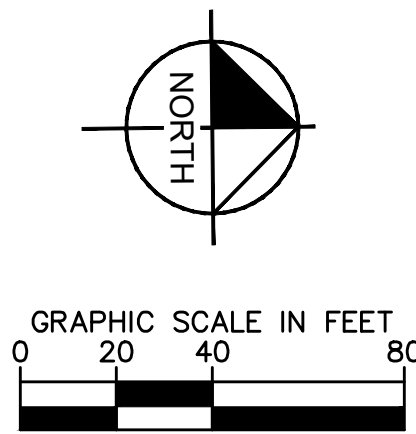
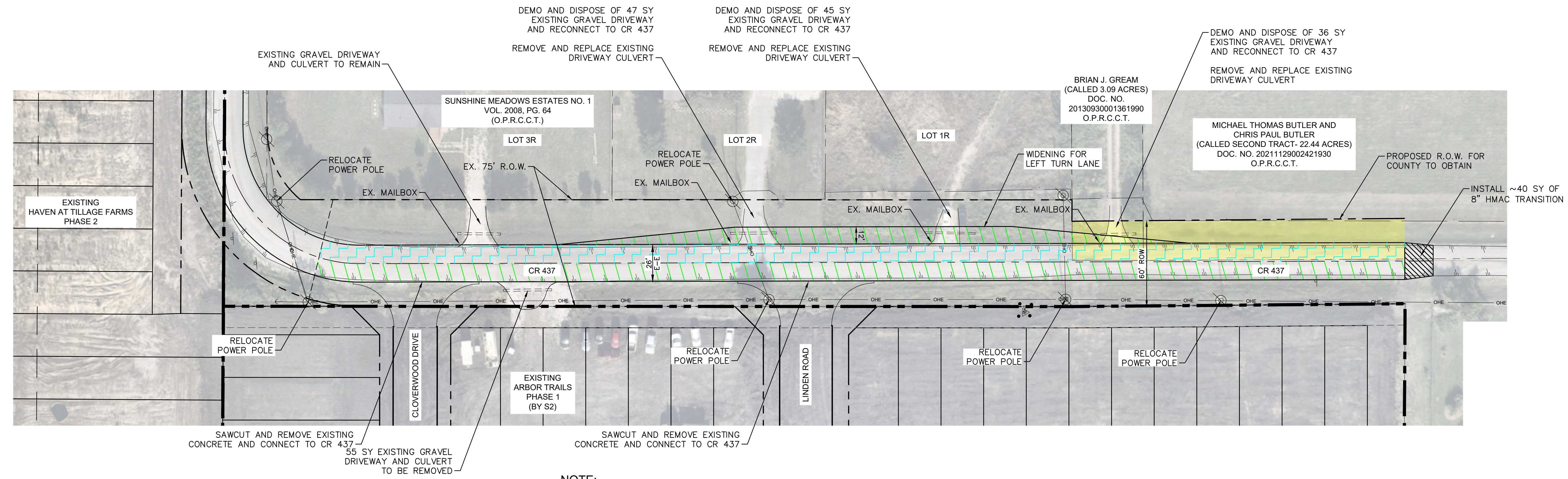
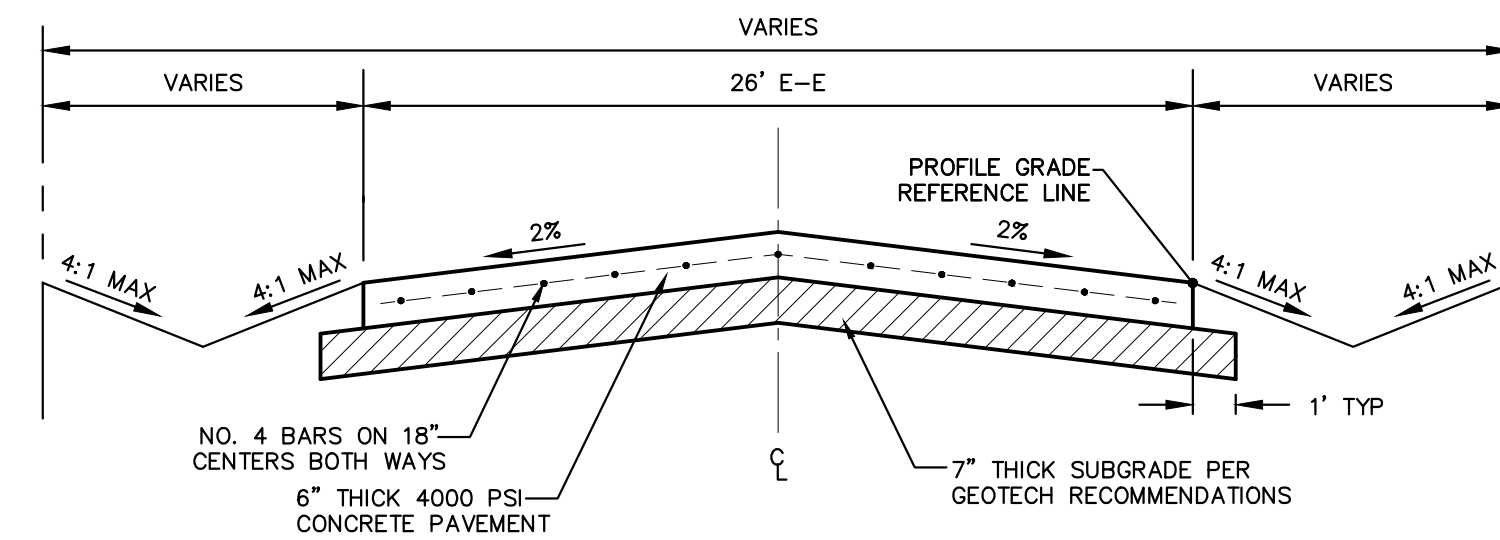


HATCH LEGEND	
	COUNTY SHARED PORTION
	S2 SHARED PORTION
	ROW FOR COUNTY TO OBTAIN



NOTE:
ALL DITCHES ARE ASSUMED TO BE REGRADED, THEREFORE DRIVEWAY CULVERTS AND DRIVEWAYS ARE SHOWN TO BE REPLACED.



TYPICAL PAVING SECTION
FOR VARIABLE WIDTH ROW - 26' E-E

CR 437 ESCROW S2

Collin County, Texas
May 2024

Kimley»Horn
400 North Oklahoma Drive, Suite 105
Celina, TX 75009
469-501-2200
State of Texas Registration No. F-928

NOTES:
1. THIS PLAN IS CONCEPTUAL IN NATURE AND HAS BEEN PRODUCED WITHOUT THE BENEFIT OF A SURVEY OR CONTACT WITH THE CITY, COUNTY, ETC.
2. AERIAL IMAGE BY NEARMAP, COPYRIGHT 2023