



COLLIN COUNTY | Construction Projects

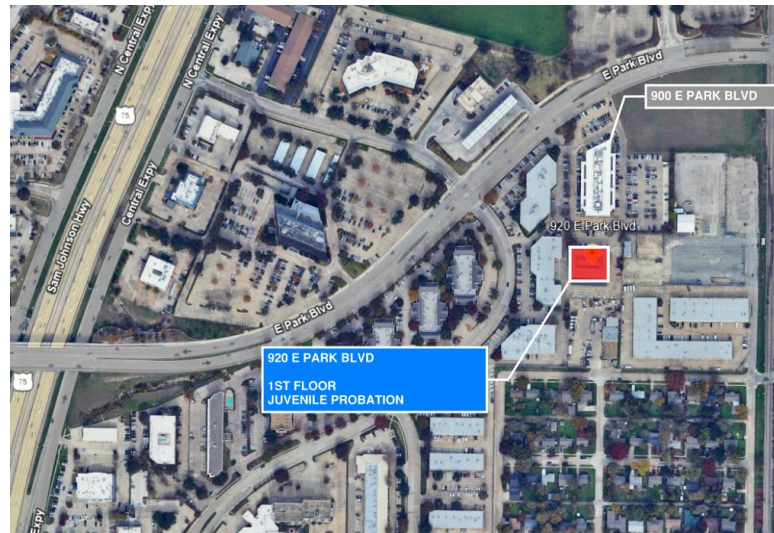
FY25 Q3 - UPDATE

July 14, 2025

Sandeep Kathuria, AIA | Director of Building Projects



COLLIN COUNTY | Project Site



- NEW CONSTRUCTION
- EXISTING BUILDINGS
- AMERICAN RESCUE PLAN ACT FUNDS
- BOND FUNDS



COLLIN COUNTY | Construction Site View



CONSTRUCTION & PROJECTS

ARPA Funded Projects, Bond Funded Projects |

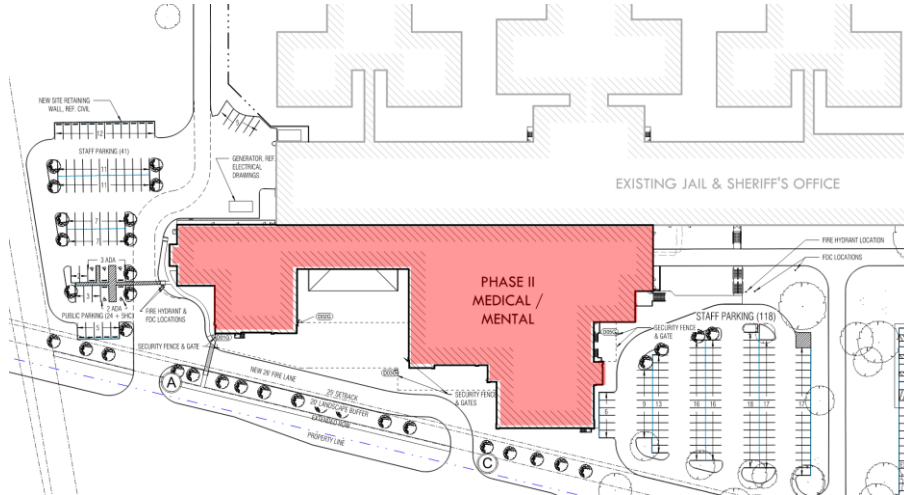
06.30.2025

[illegible]



COLLIN COUNTY | Adult Detention Facility (Phase 2) – Medical & Mental Health Addition

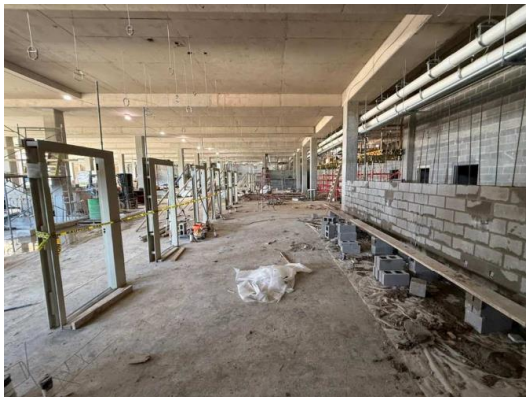
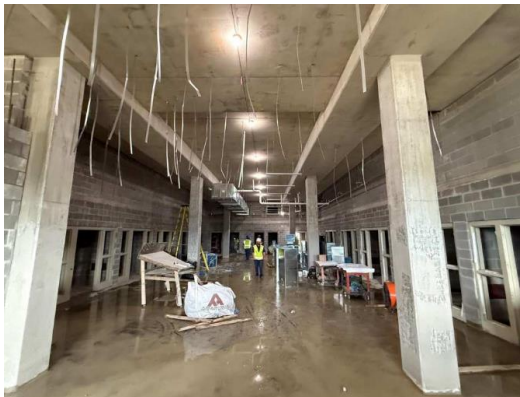
- Contractor: Sedalco Construction Services
- Design Team: BSW Architects; Pacheco Koch
MD Engineering; JQ Engineering; Latta Tech
- Total Area 213,142 sf
- Construction Cost (Incl. Change Orders): \$ 111,491,414
- Design/Professional Services: \$ 8,020,008
- Substantial Completion (Anticipated): 07/09/2026
Weather Impact days: 4
- Current Progress (% Completion): 43%
- Change Orders (Q3): [5] \$ 401,057
- Total Change Orders (To date): \$ 6,058,814 (5.74 %)





COLLIN COUNTY | Adult Detention Facility (Phase 2) – Medical & Mental Health Addition

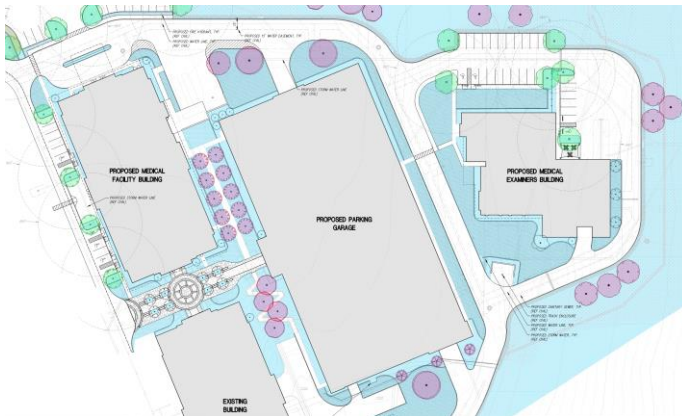
- Concrete work - 96% complete
- Mechanical & electrical rough in progress
- Door & window installation in progress
- Concrete masonry wall construction in progress
- Level 2 concrete roof deck nearing completion
- TPO roofing start next week
- Mechanical equipment being installed in Level 0
- Brick ledge installation has begun at exterior walls
- Cranes removed from site





COLLIN COUNTY | Healthcare, Medical Examiner, Parking Garage

- Contractor: Christman Company
- Design Team: PGAL; Westwood; Walter P Moore; Summit Consultants
- Project Management: Broaddus and Associates
- Healthcare: 90,128 sf
- Medical Examiner: 20,318 sf
- Parking Garage: 447 spaces
- Construction Cost (Incl. Change Orders): \$ 62,881,221
- Design/Professional Services: \$ 7,468,512
- Substantial Completion (Current): 06/29/2026
- Weather Impact days (Q3): 6
- Current Progress (% Completion): 40%
- Change Orders (Q3): [4] \$ 463,840
- Total Change Orders (To date): \$ 1,065,481 (1.72%)





COLLIN COUNTY | Healthcare, Medical Examiner, Parking Garage

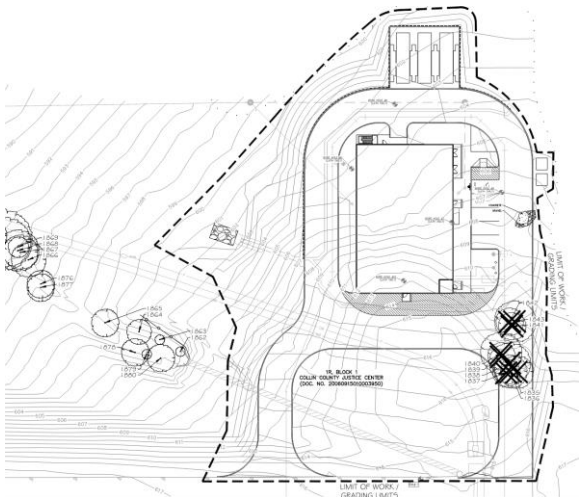
- Site work – Fire Lane construction completed
- Site work – Lower SW corner grading underway
- Tower Crane#2 was erected
- Healthcare – Concrete top out completed
- Healthcare - Level 1 & 2 Shoring removal in process
- Parking Garage – 1st floor area slab completed, 2nd floor forming underway
- Medical Examiner – Steel erection top out and mezzanine slab completed
- Façade mock up complete





COLLIN COUNTY | New Central Utility Plant (Modular)

- | | | | |
|--|--|----|-------------------|
| ▪ Contractor: | Sedalco Construction Services | | |
| ▪ Design Team: | BSW Architects; Pacheco Koch
MD Engineering; JQ Engineering; Latta Tech | | |
| ▪ Total Area | | | 7,560 sf |
| ▪ Construction Cost (Incl. Change Orders): | | \$ | 31,850,642 |
| ▪ Design/Professional Services: | | \$ | 718,440 |
| ▪ Substantial Completion (Anticipated): | | | 10/28/2025 |
| ▪ Current Progress (% Completion): | | | 69 % |
| ▪ Change Orders (Q3): | [0] | \$ | 0 |
| ▪ Total Change Orders (To date): | | \$ | 6,368,119 (24.9%) |





COLLIN COUNTY | Courthouse Expansion

- Phase 1 Design Visioning in progress
- Design Team: PGAL; Kimley Horn (Civil);
Walter P Moore (Structural)
Summit (MEP); TNP (Landscape)
DataCom; Latta Tech
- Contractor: TBD
CMAR solicitation – Step 2 in progress
- Project Management: TBD

- Phase 1 - Courthouse Expansion: 150,000 sf
- Parking Garage: 500 spaces
- Phase 2 - Office Addition: 80,000 sf

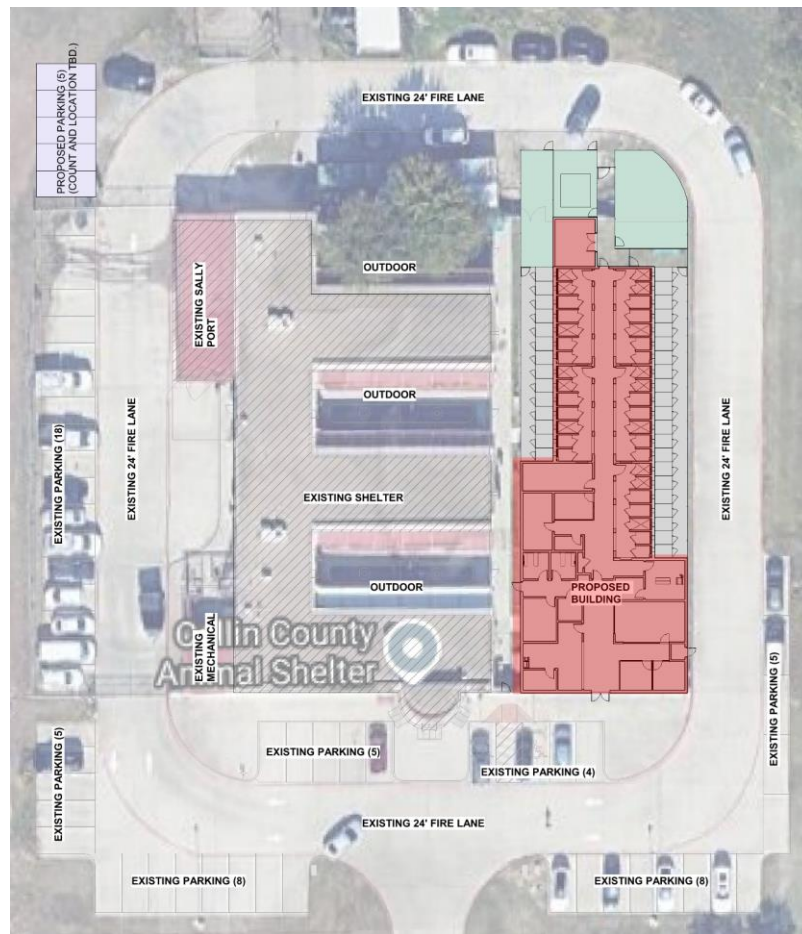
- Total Budget (2023): \$ 193,000,000
- Construction Start (Anticipated): 02/15/2026
- Substantial Completion (Anticipated): 12/30/2027





COLLIN COUNTY | Animal Shelter – Adoption Facility

- Design Visioning in progress
- Design Team: Quorum Architects;
Kimley Horn (Civil); RL Woods (Structural)
BHB (MEP)
- Contractor: TBD
CMAR solicitation – Step 2 in progress.
- Total area (Target): 10,000 sf
- Estimate Budget (2023): \$ 5,700,000
- Construction Start: 02/15/2026
- Substantial Completion : 06/15/2027





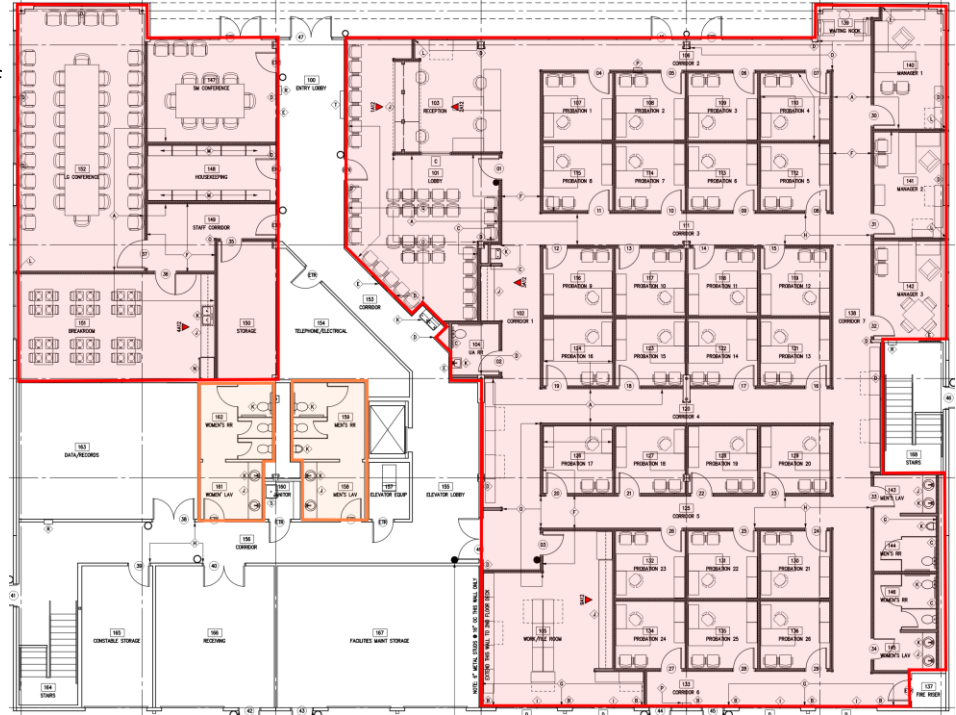
-
- NEW SITE RETAINING WALL, REF. CIVIL
- STAFF PARKING (115)
- GENERATOR, REF. ELECTRICAL, DRAWINGS
- EXISTING JAIL & SHERIFF'S OFFICE
- PHASE II MEDICAL / MENTAL
- STAFF PARKING (116)
- PUBLIC PARKING (24 + 10)
- FIRE HYDRANT & FDC LOCATIONS
- SECURITY FENCE & GATE
- NEW 20' FIRE LINE
- 20' SETBACK
- LANDSCAPE BUFFER
- 10' EASEMENT
- PROPERTY LINE
- SECURITY FENCE & GATES
- FIRE HYDRANT LOCATION
- FDC LOCATIONS
- SECURITY FENCE & GATE

DESIGN TEAM SOLICITATION DEPARTMENT COORDINATION / DESIGN PERMIT/BID/PRECONSTRUCTION CONSTRUCTION






COLLIN COUNTY | Juvenile Probation – 920 E Park Blvd Plano Building Renovation

- Contractor: Tegrity Contractors
- Design Team: Spurgin & Associates Architects
Root Engineering Services
- Total Area 9,250 sf
- Total Project Budget: \$ 4,082,000
- Construction Cost: \$ 1,667,777
- Design/Professional Services: \$ 161,500
- Construction Start : 07/21/2025
- Substantial Completion (Anticipated): 02/15/2026





06.30.2025

 DEPARTMENT COORDINATION / DESIGN
  PERMIT/BID/PRECONSTRUCTION
  CONSTRUCTION