



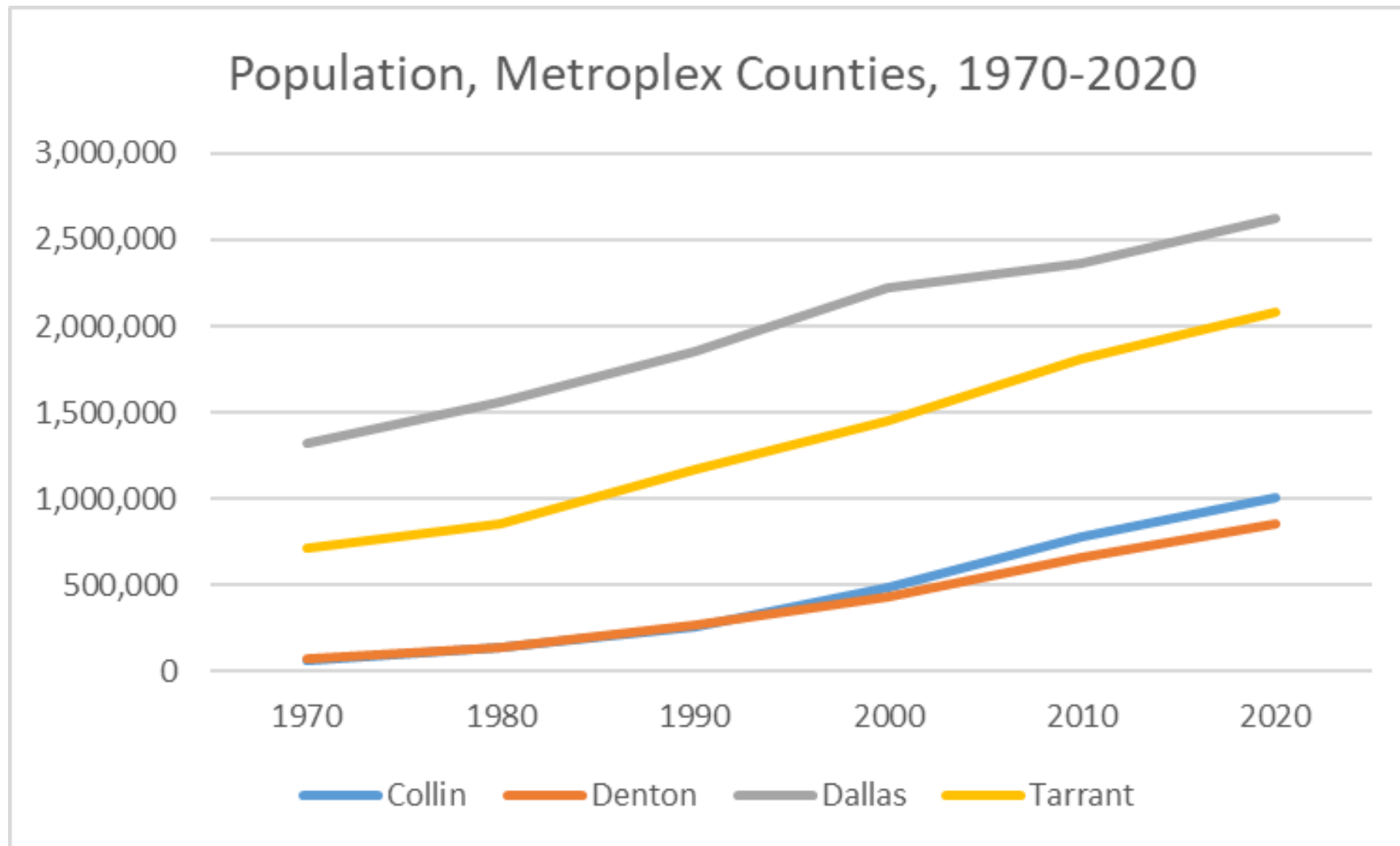
Transportation Update

Collin County Commissioners Court

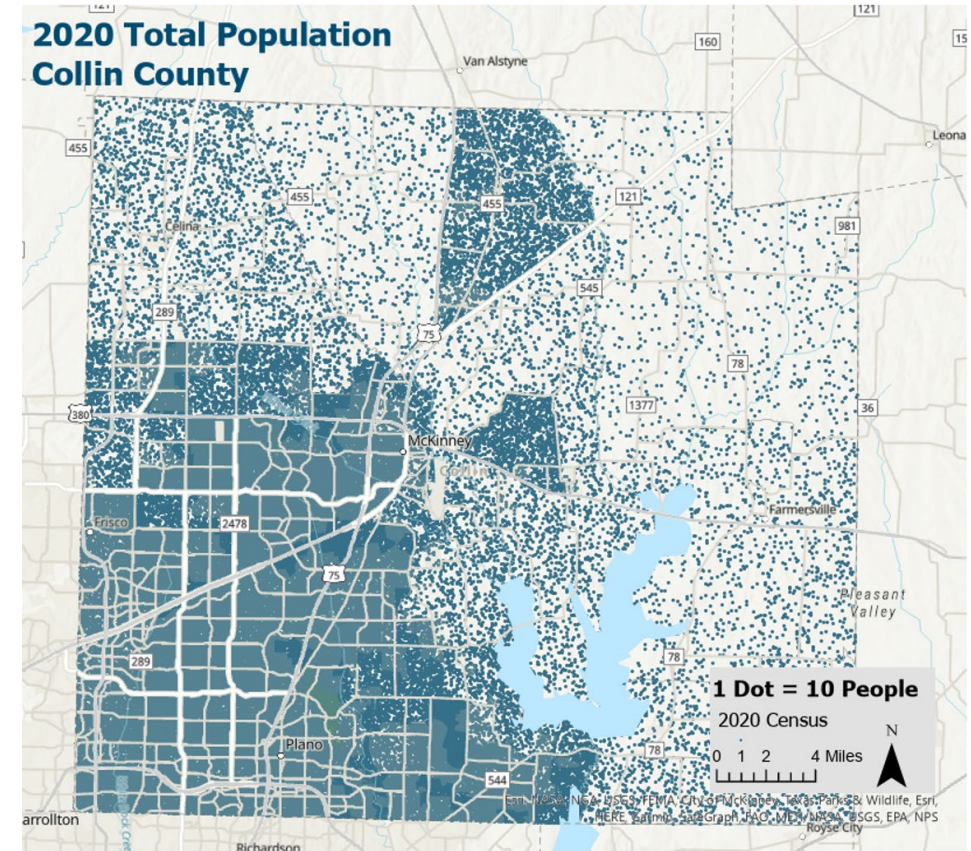
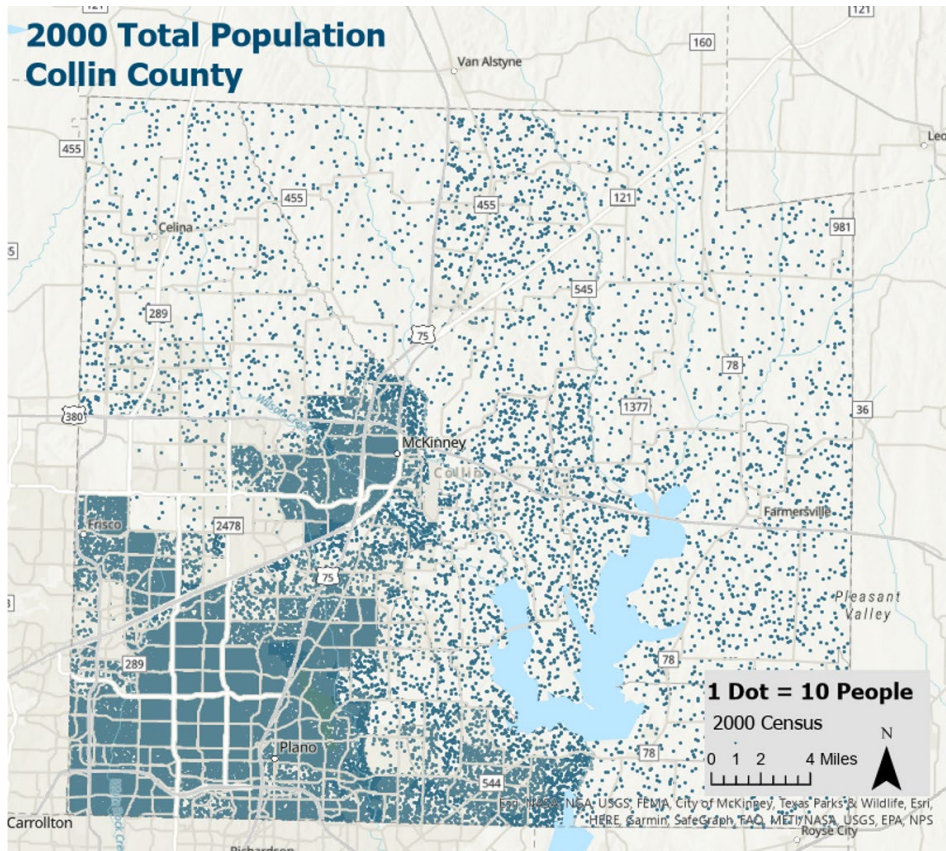
December 8, 2025

**Presented by Clarence Daugherty, P.E.
Collin County Director of Engineering**

HISTORIC GROWTH

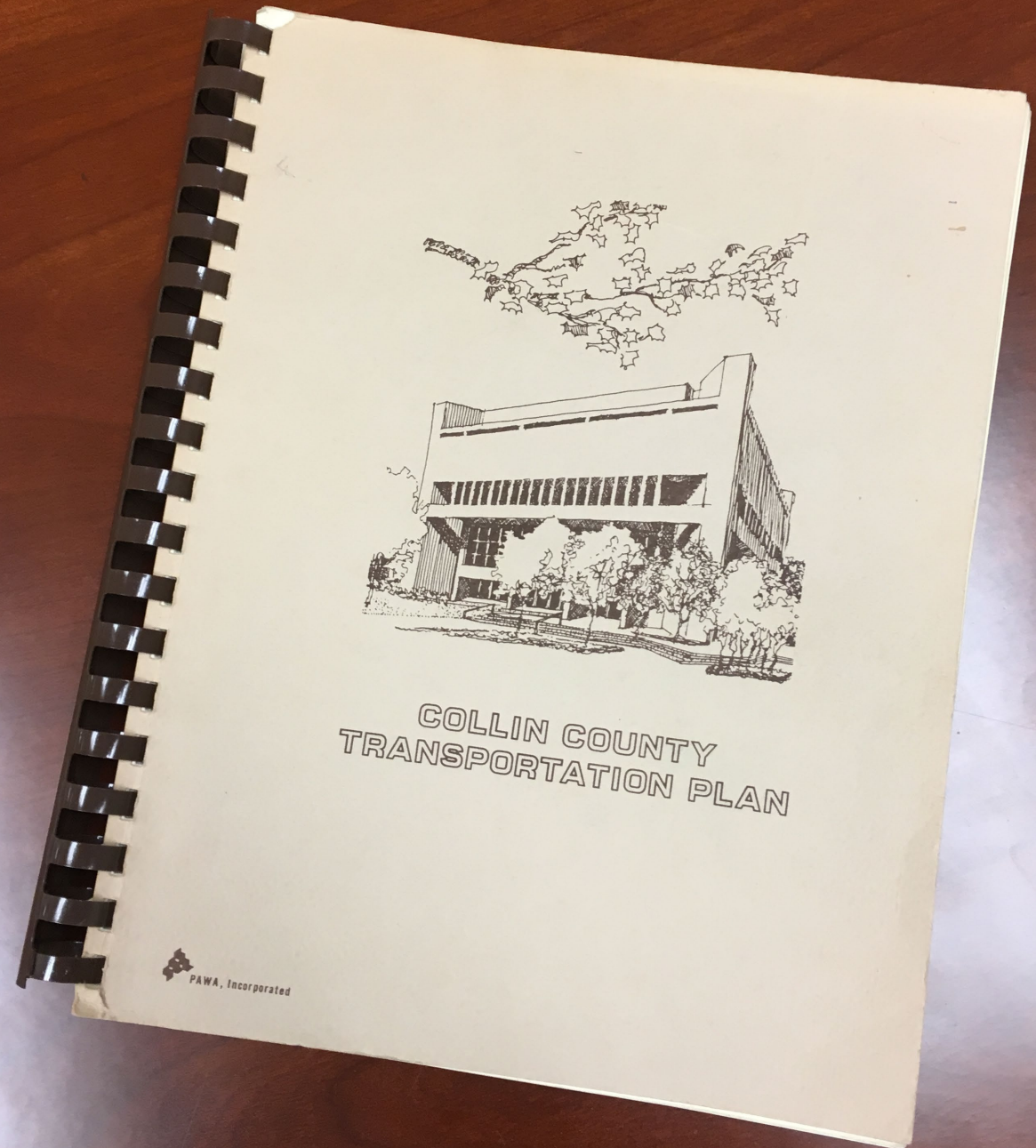


HISTORIC GROWTH



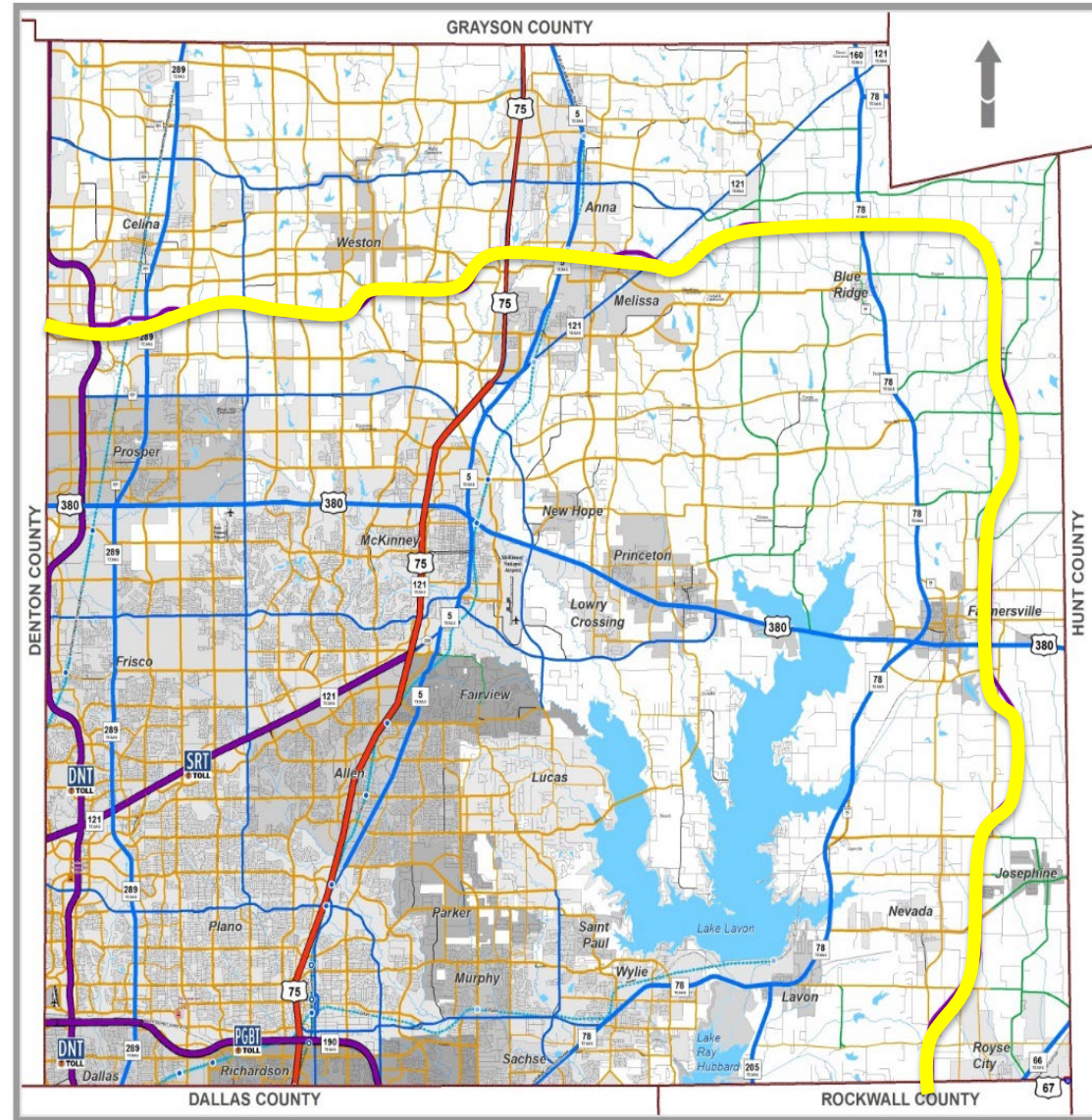
FIRST STEPS

- **First Thoroughfare Plan in 1982**
- **Updated Over the Years**



PROGRESS

Back in 2000/2001, the Collin County Commissioners Court had taken the first step towards more freeways by adding the Outer Loop

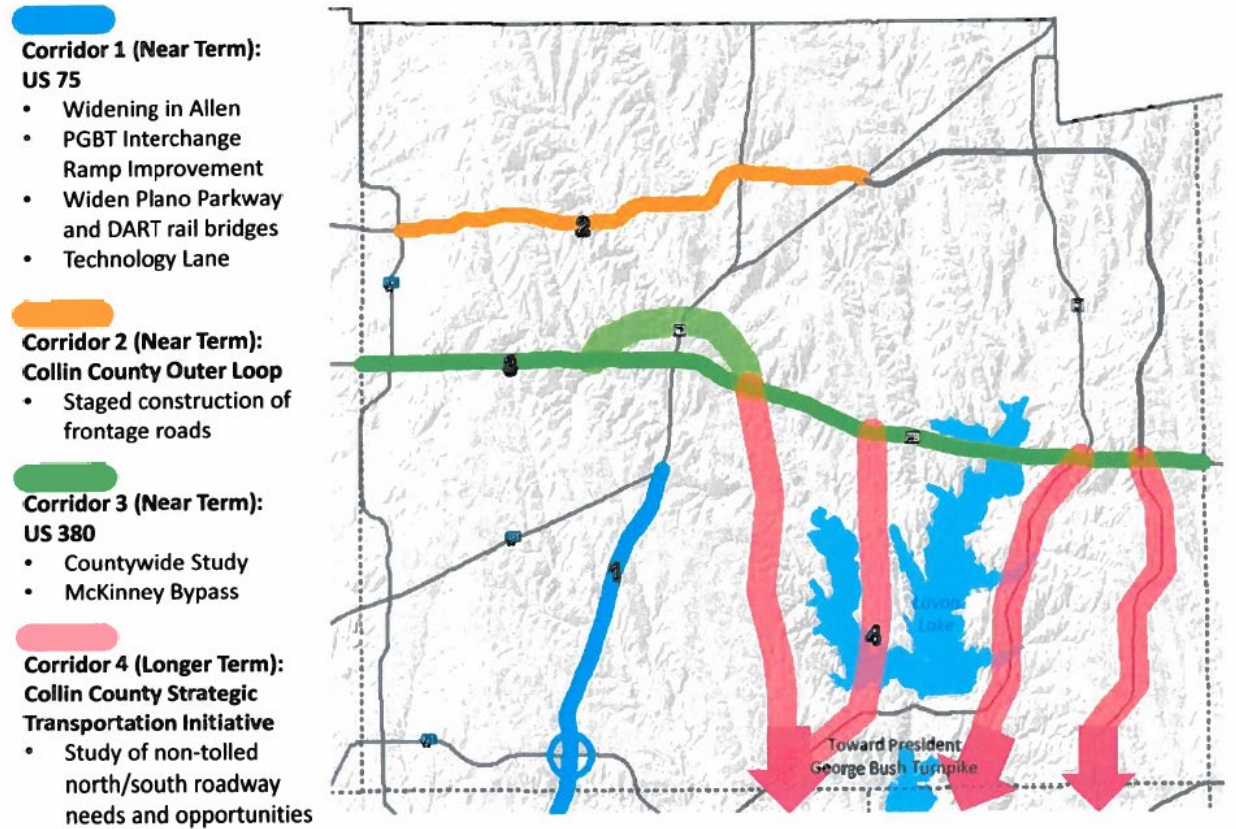


PROGRESS

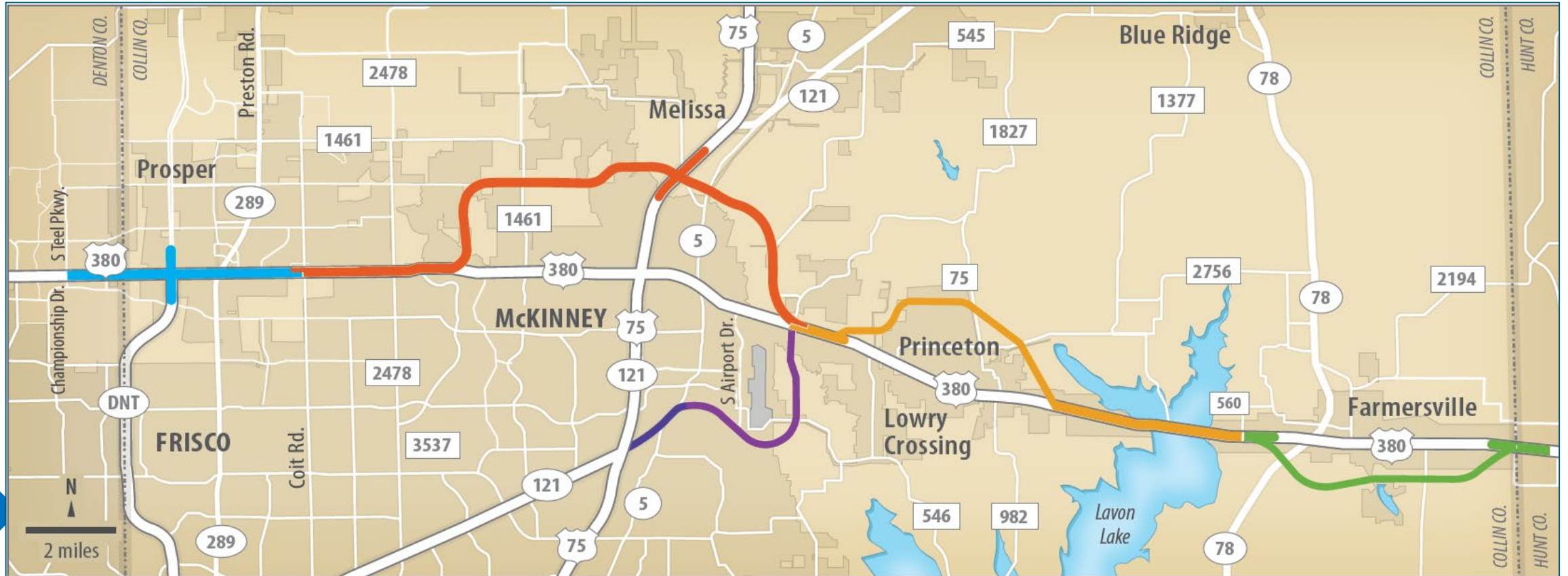
IN 2016, THE COM COURT IDENTIFIED FREEWAYS NEEDING TO BE DEVELOPED:

- US 75
- OUTER LOOP
- US 380
- N-S FREEWAY EAST OF US 75

DRAFT Roadway Action Plan for Collin County DRAFT



US 380 & Sp 399 Freeways

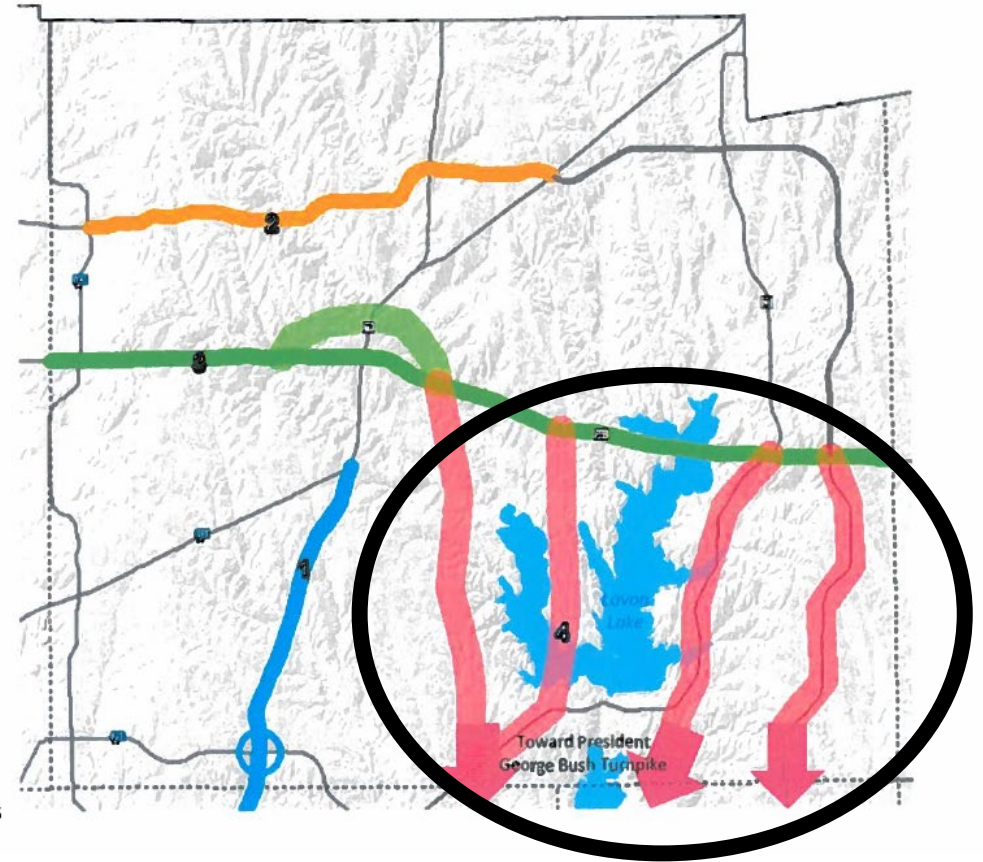


PROGRESS

N-S FREEWAY EAST OF US 75

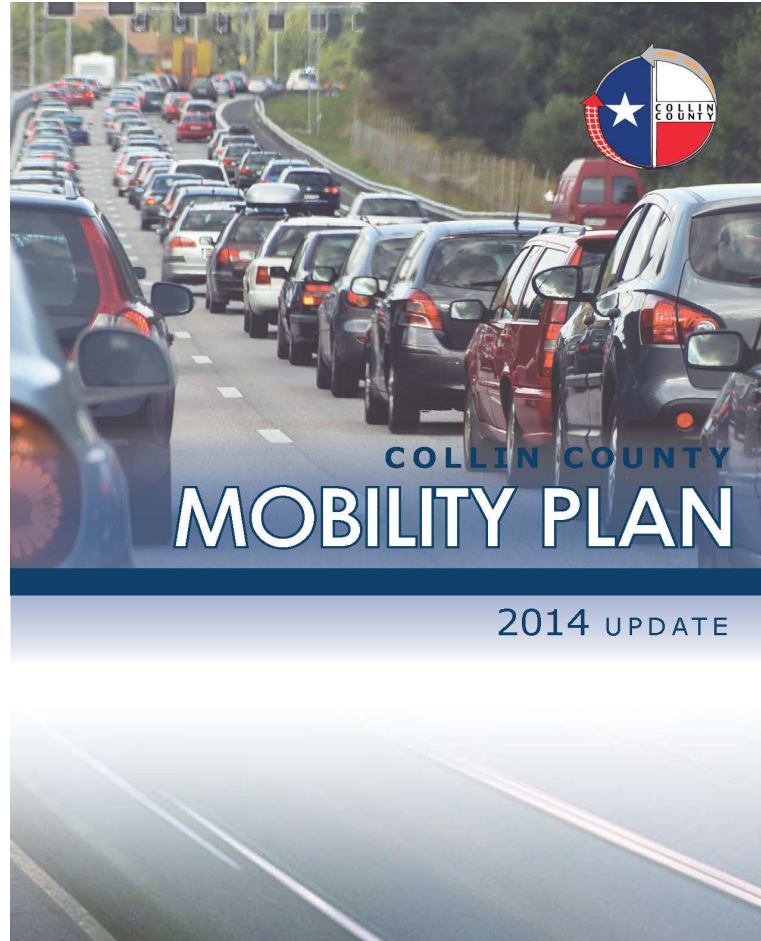
DRAFT Roadway Action Plan for Collin County DRAFT

- Corridor 1 (Near Term):**
US 75
 - Widening in Allen
 - PGBT Interchange Ramp Improvement
 - Widen Plano Parkway and DART rail bridges
 - Technology Lane
- Corridor 2 (Near Term):**
Collin County Outer Loop
 - Staged construction of frontage roads
- Corridor 3 (Near Term):**
US 380
 - Countywide Study
 - McKinney Bypass
- Corridor 4 (Longer Term):**
Collin County Strategic Transportation Initiative
 - Study of non-tolled north/south roadway needs and opportunities

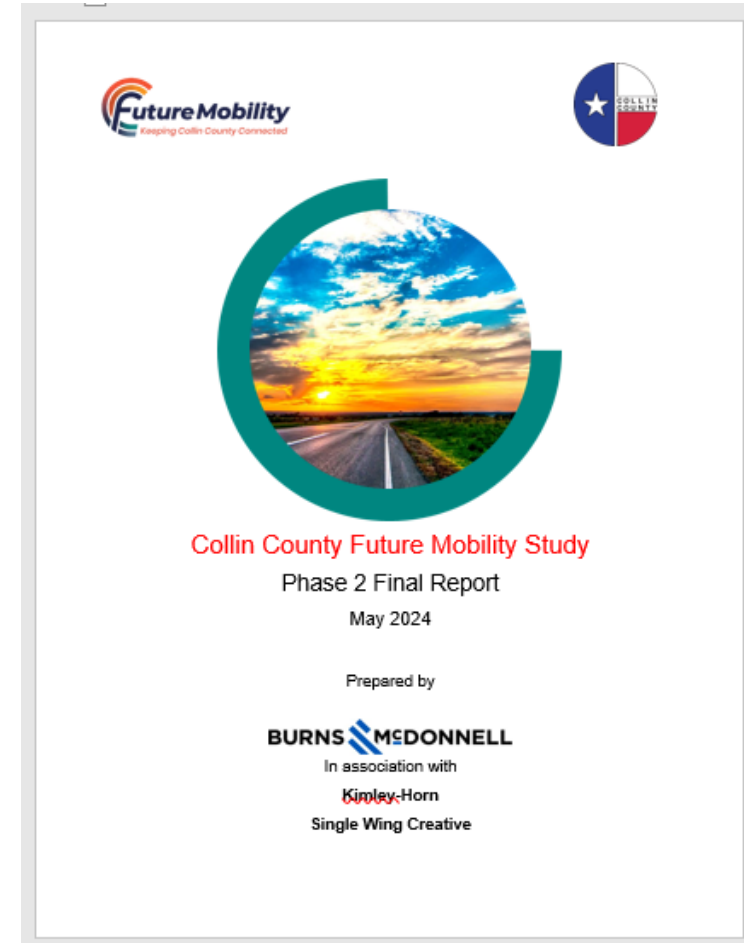


PLANNING

Mobility Plan Update, 2015

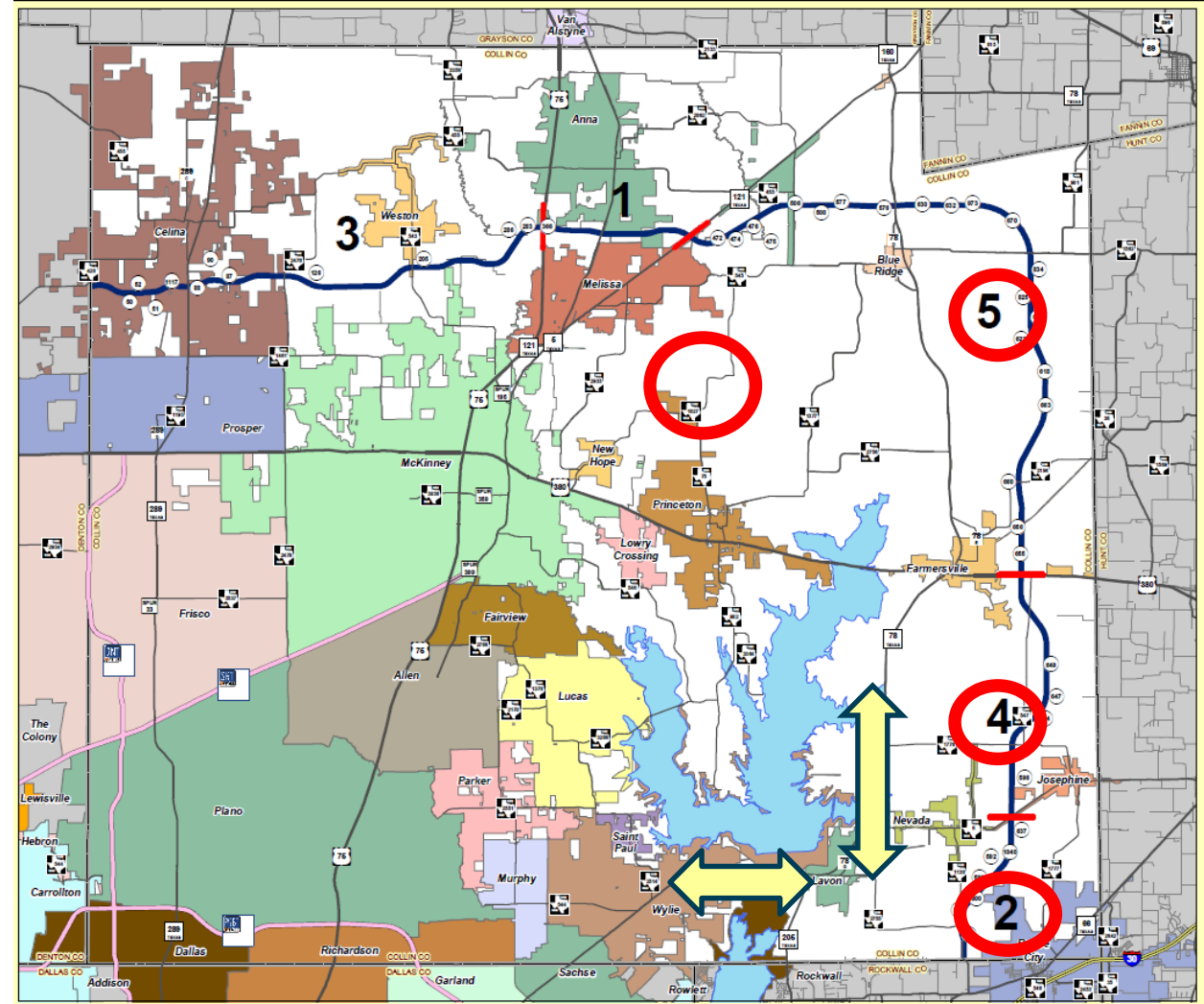


East County Mobility Plan, 2024



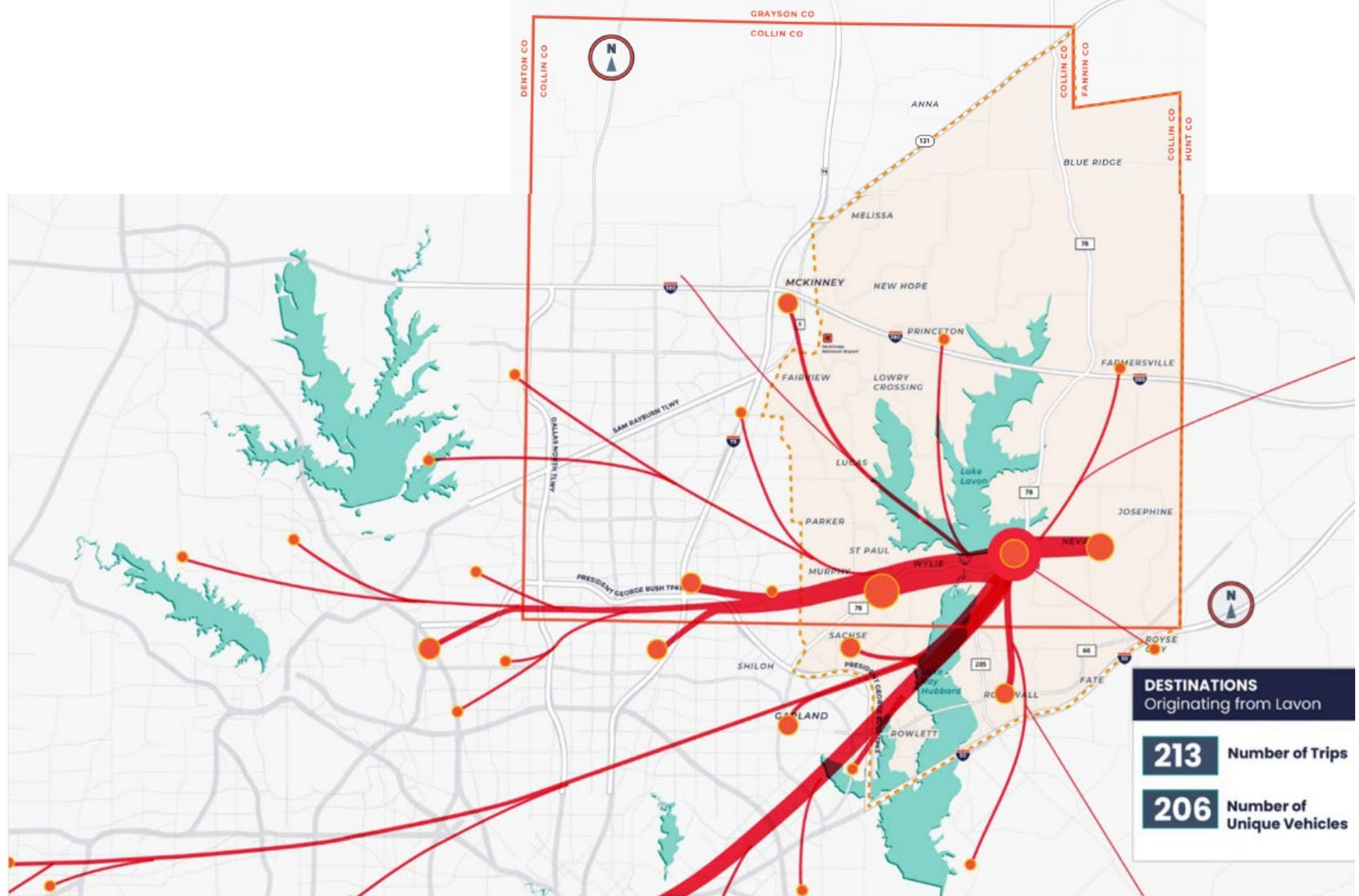
Preliminary Planning of Freeways

- One service road is open from US 75 to SH 121
- One service road is open from DNT to Custer
- One service road from Custer to US 75 began construction in spring 2024
- Schematic will start soon from US 380 to Rockwall Co



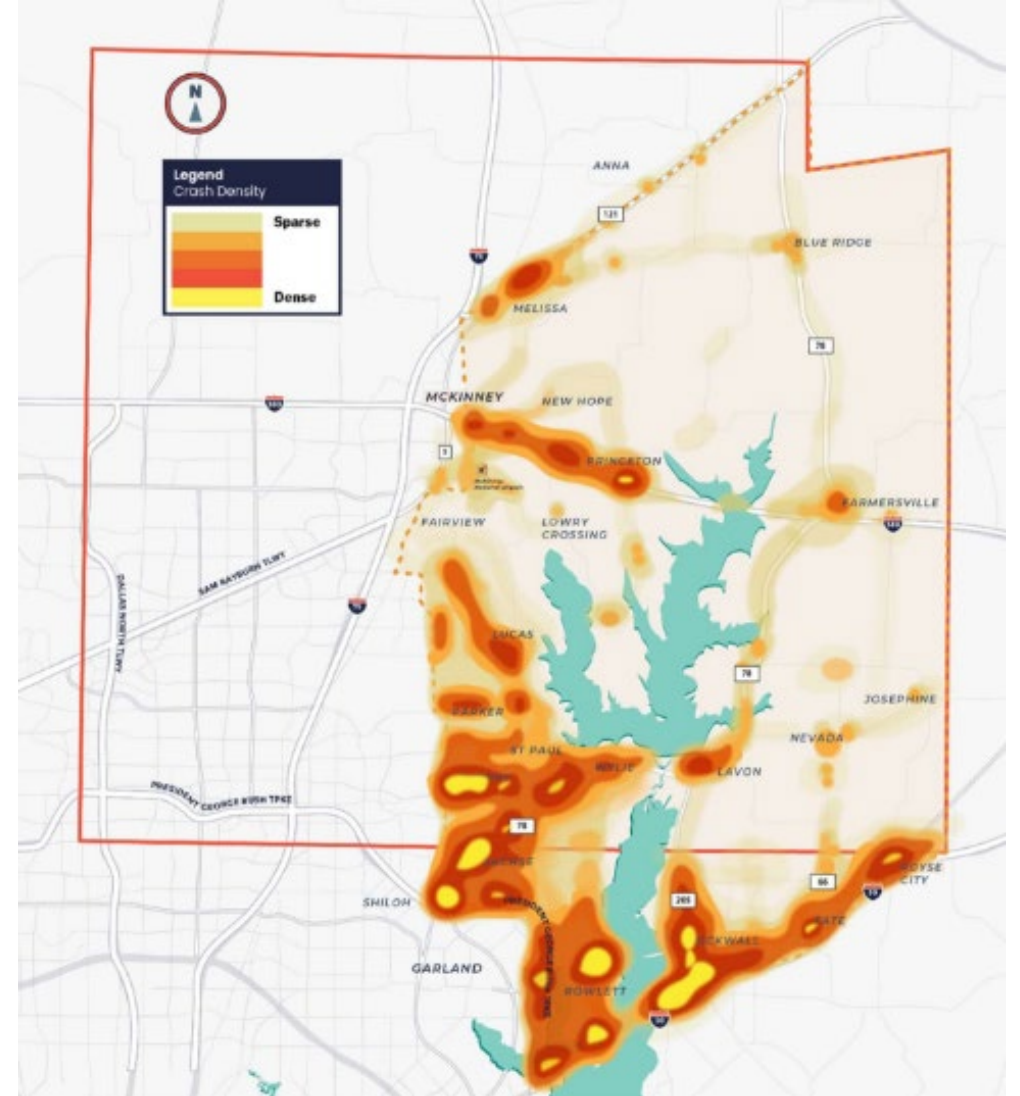
“CC Future Mobility” (mobility study for east Collin County)

- O/D Studies



“CC Future Mobility” (mobility study for east Collin County)

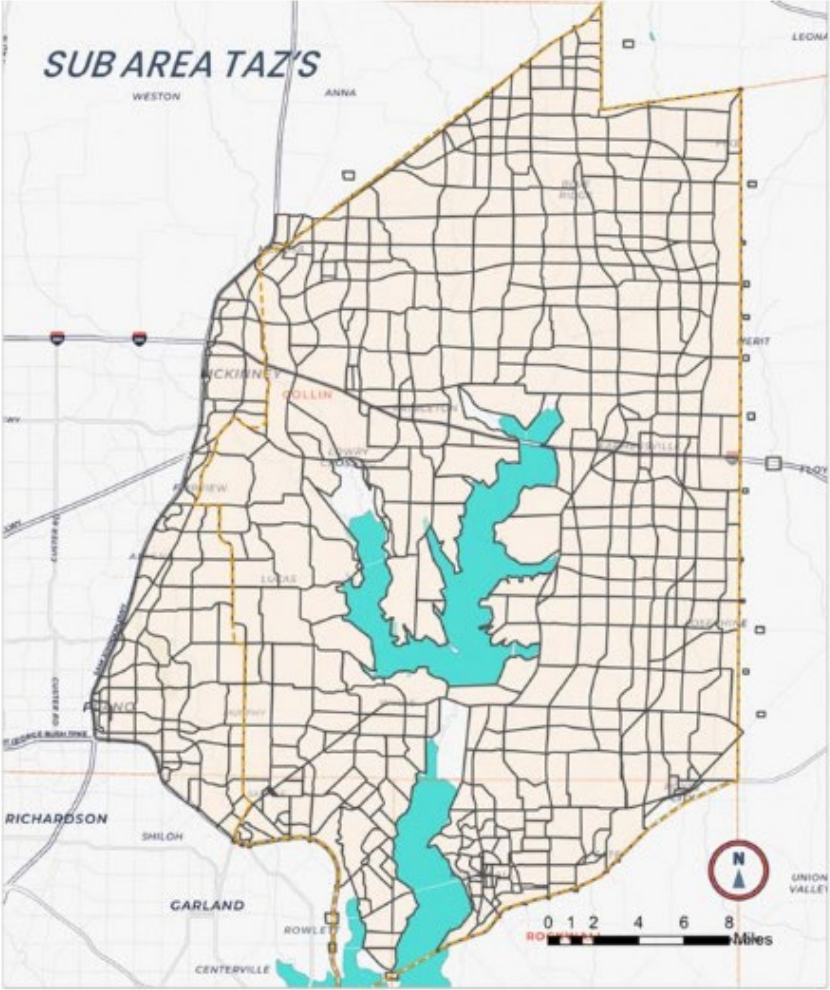
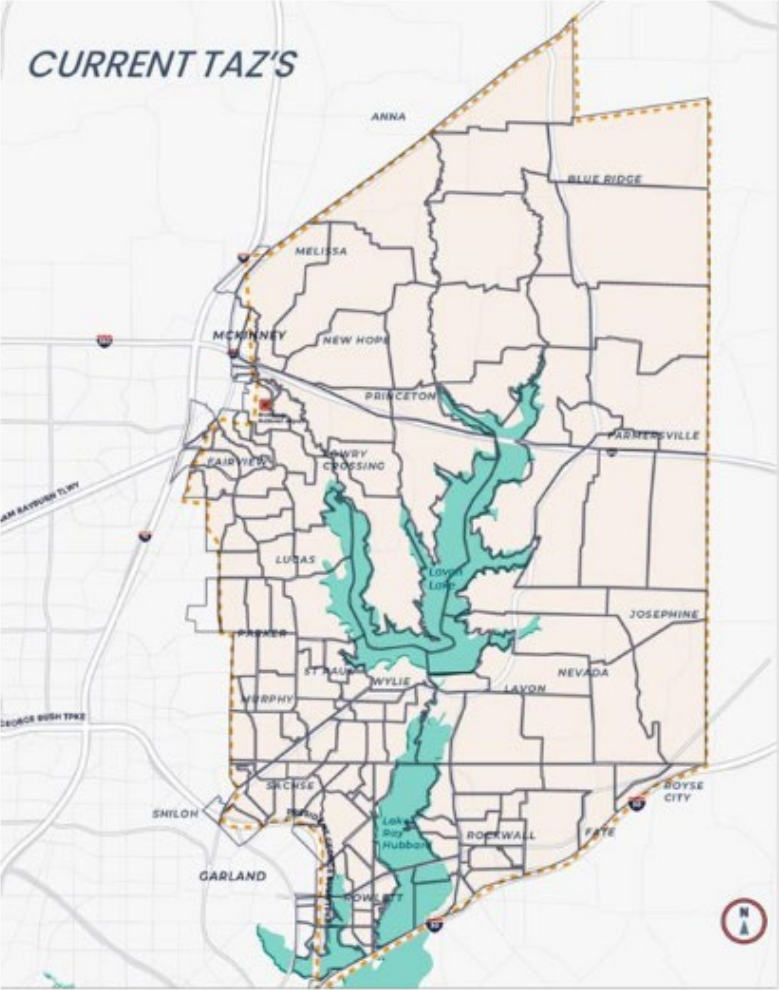
- Safety: Crash analysis



“CC Future Mobility” (mobility study for east Collin County)

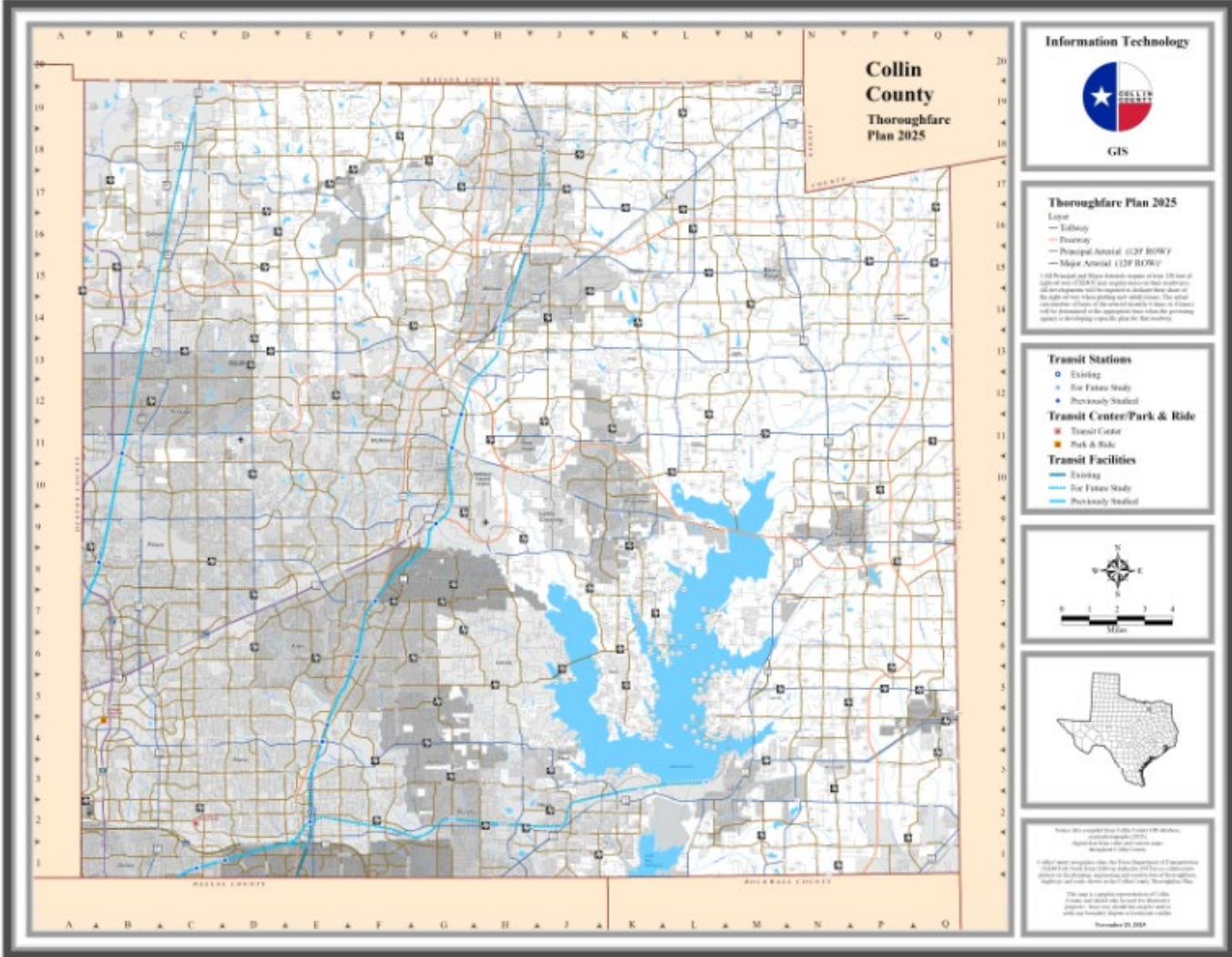
Figure 20: Refined Traffic Analysis Zone (TAZ) Map

Improved Travel Demand Model Performance by Reducing Size of Traffic Analysis Zones



“CC Future Mobility” (mobility study for east Collin County)

Refined Thoroughfare Plan



Bond Programs

First in 1983

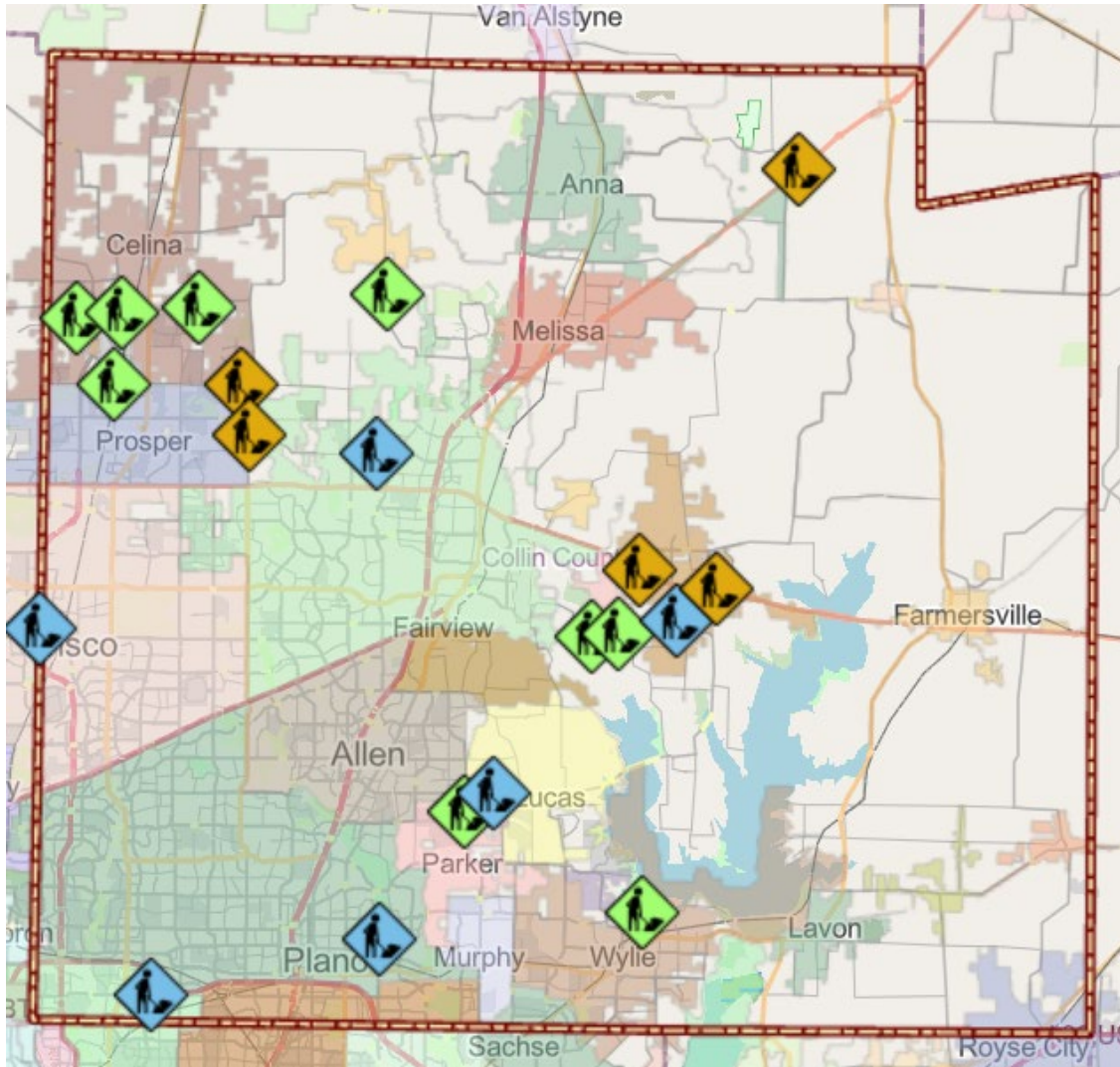
Bond programs until 2007 provided 80% of the program for matching money (50/50) to cities for regional thoroughfares

Bond Programs

2018 Program - \$740M

- **Freeways - \$600M**
- **Thoroughfares - \$140M**
 - **County - \$58M**
 - **TxDOT - \$22M**
 - **Cities - \$60M**

Major Road Projects



County Managed Projects

9



TxDOT Managed Projects

5



City Managed Projects

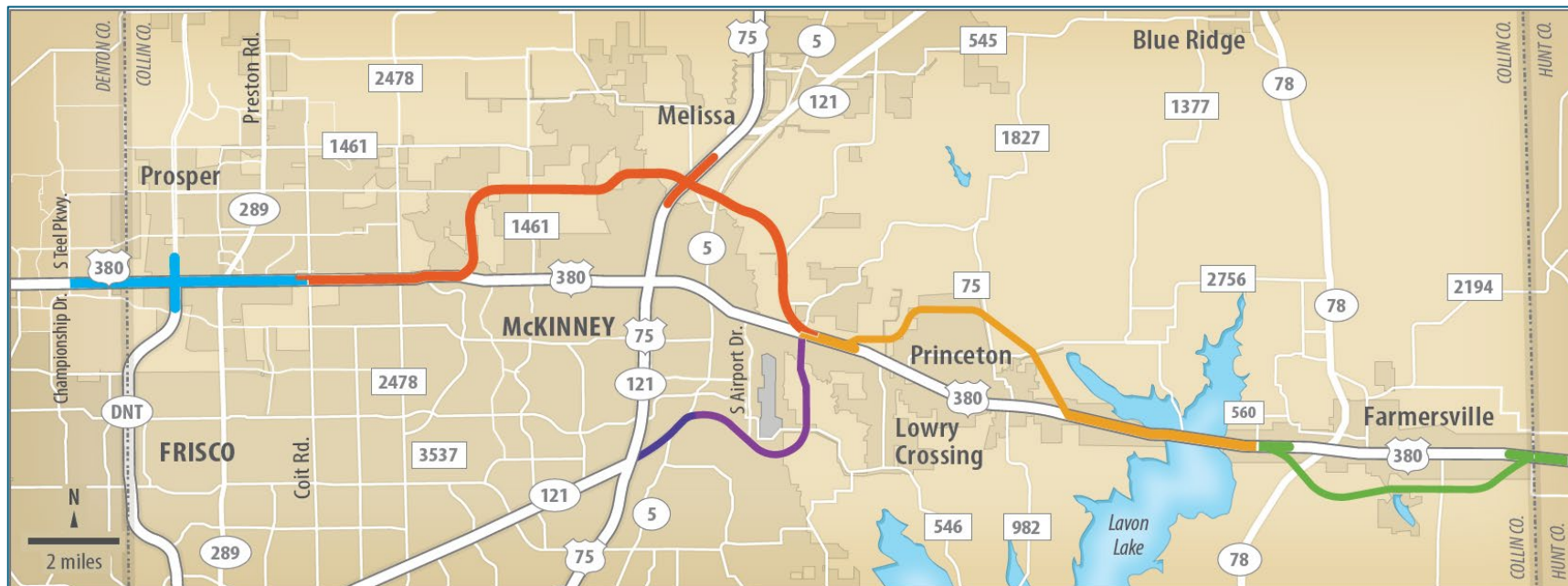
6

<https://collin.maps.arcgis.com/apps/webappviewer/index.html?id=95b60481c6604d09af932d2061e9556e>

Major Road Projects

US 380 & Sp 399 Freeways

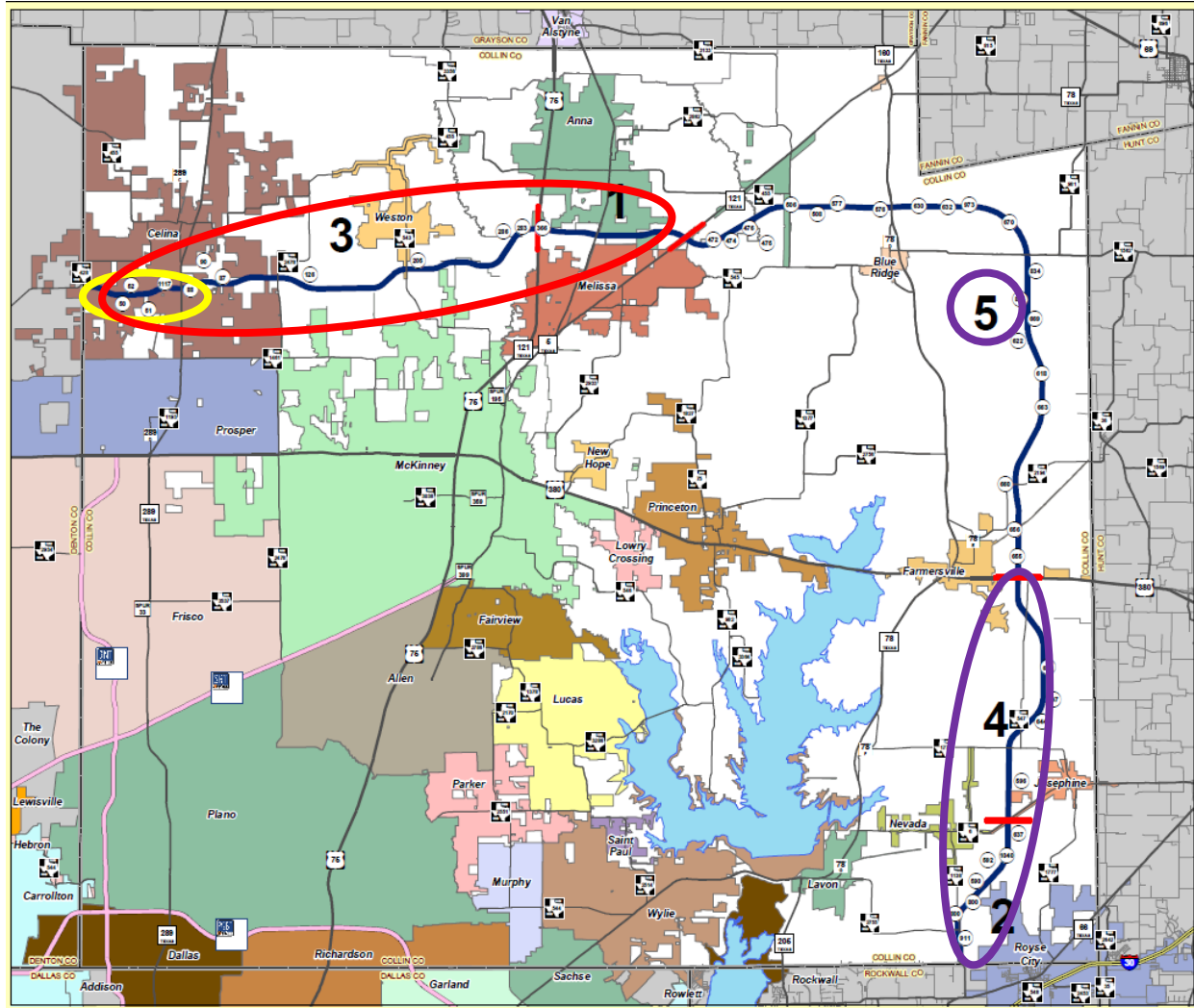
- Collin County allocated \$356M
- All the segments are environmentally cleared
- ROW is being acquired for Sp 399, McKinney
- Collin Co has acquired 27 tracts for TxDOT
- The Co will pay cities' costs to relocate W&S



Major Road Projects

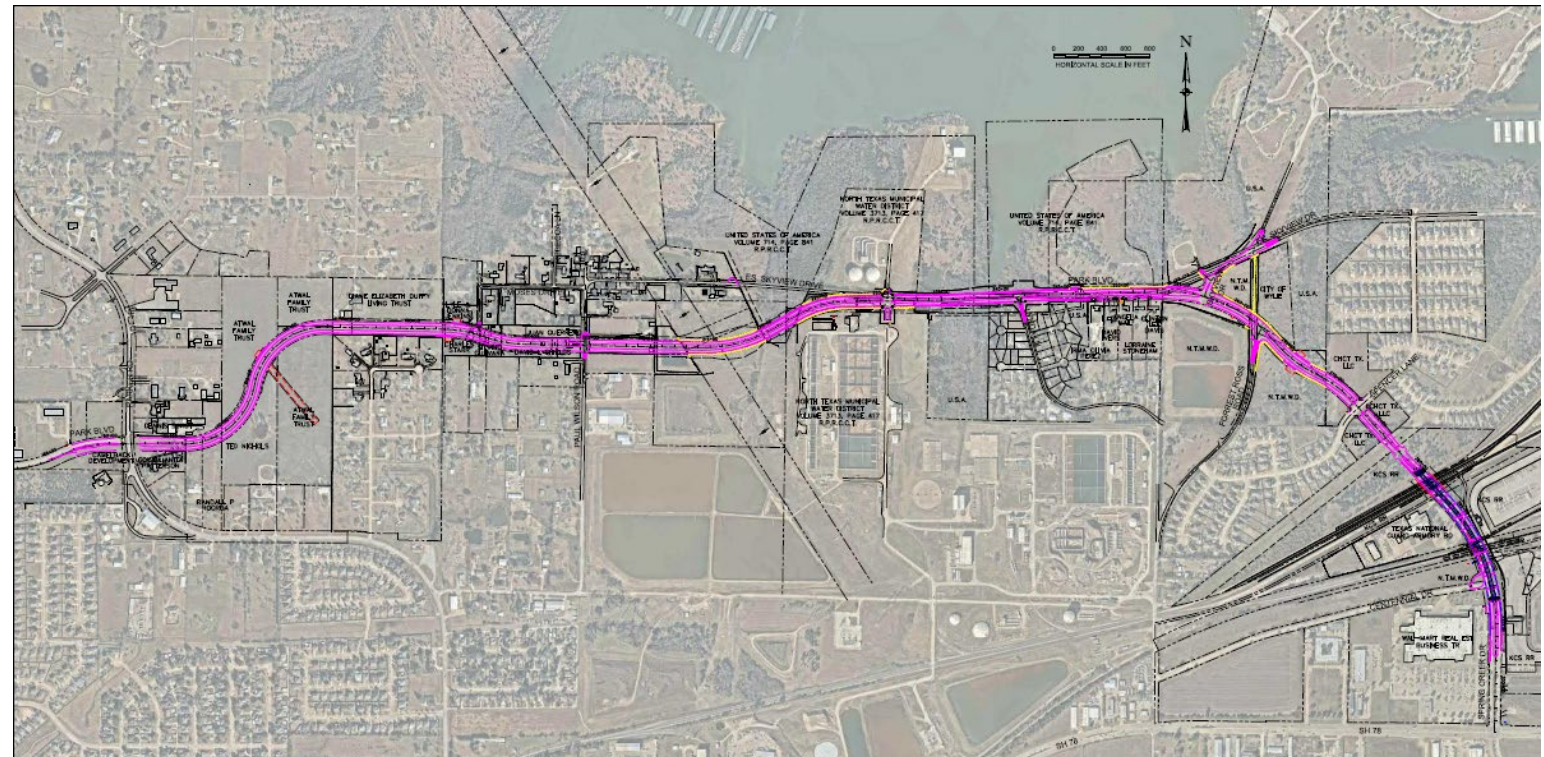
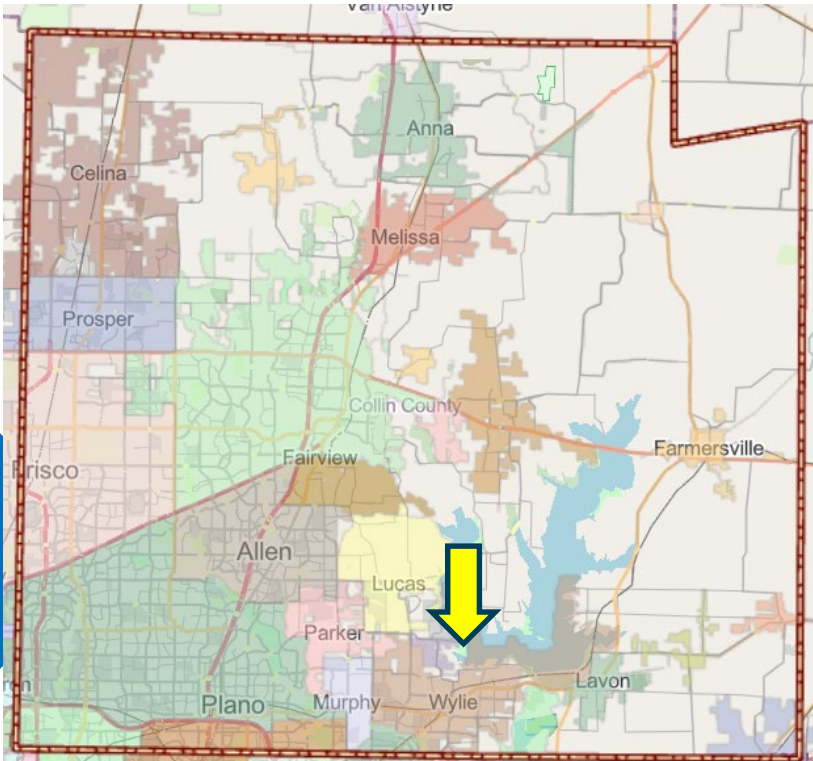
Collin County Outer Loop

- One service road open Seg 1,3; DNT - SH 121
- Seg 3A second service road under design; Denton Co to Choate; begin construction in 2026
- Seg 2,4 schematic under design; Farmersville - Rockwall
- Finalizing alignment Seg 5; Melissa - Farmersville



Major Road Projects

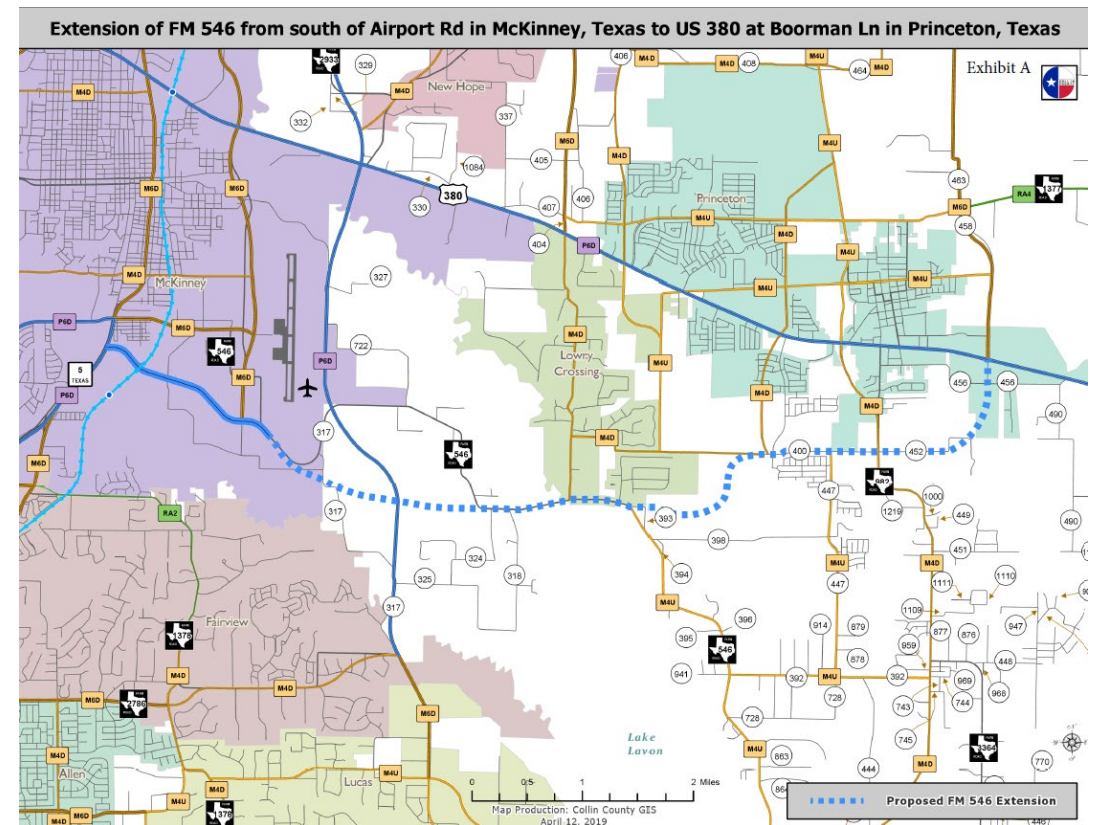
- Park Blvd from Parker to SH 78 under construction: 2025 - 2027



Major Road Projects

McKillop/FM 546/Myrick/Boorman Regional Thoroughfare from McKinney Airport to east of Princeton

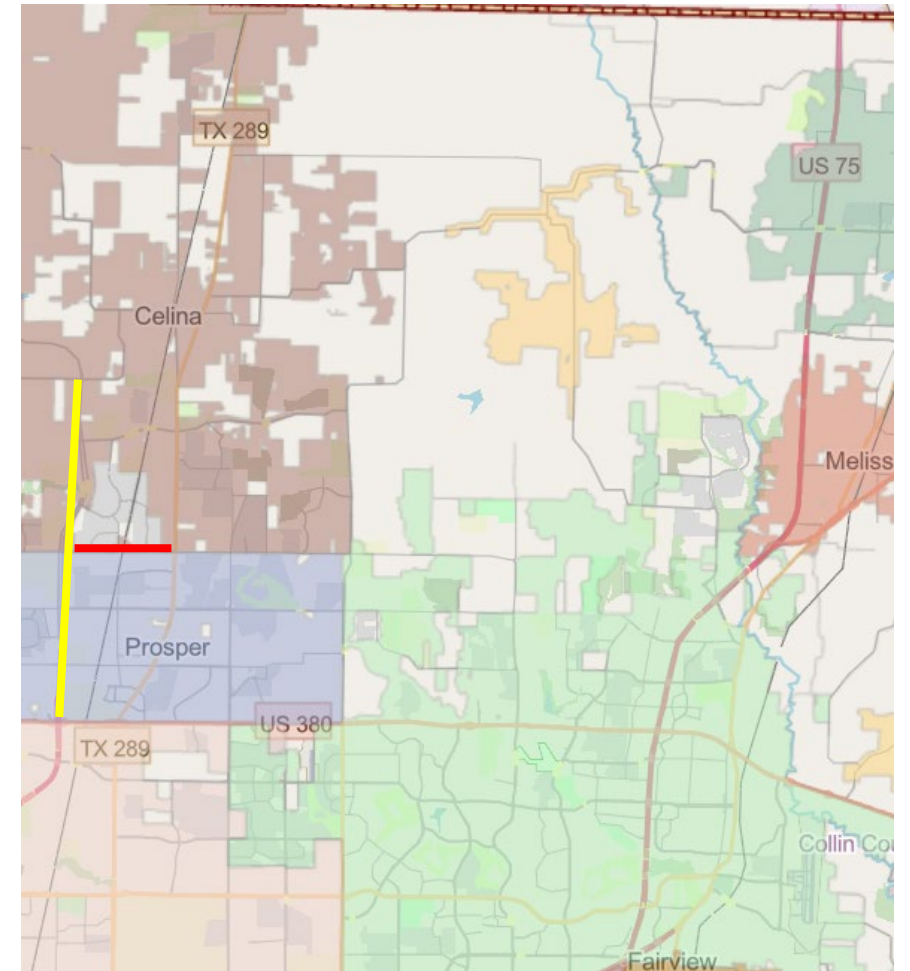
- Phase 1 (East) ROW being acquired; construction start in 2026
- Phase 2 (West) Alignment study underway



Major Road Projects

Other Collin County Managed Projects

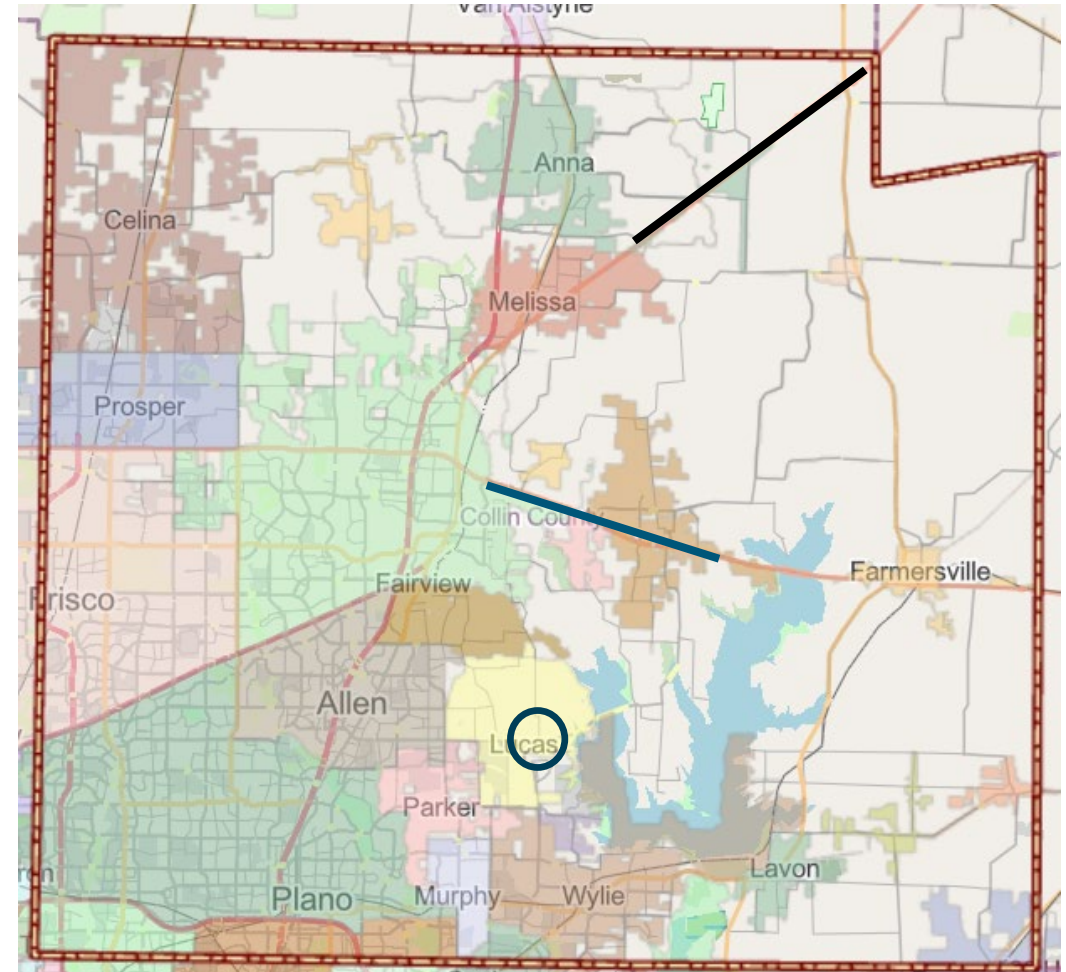
- DNT SB service road completed, US 380 to Celina
- Frontier is open from DNT to Preston



Major Road Projects

TxDOT Managed Projects

- SH 121 in NE (Co contributed \$11M)
- US 380 East widening to 6 lanes (Co contributed \$11M) under construction
- FM 1378/FM 3286 Intersection under construction (County and Lucas acquired ROW)



Major Road Projects

City Managed/County Funded Projects

- 2019 \$36M awarded to 6 cities:
 - Dallas, Frisco, Lucas, McKinney, Plano, Princeton
- 2022 \$24M awarded to 7 cities:
 - Allen, Anna, Celina, Fairview, Josephine, Prosper, Wylie
- \$30M for Panther Creek Pkwy, Frisco
- \$30M for McKinney National Airport Runway Extension

The background features several geometric shapes: light blue triangles pointing up and down, and dark blue triangles pointing left and right. There are also thin black lines forming zigzag patterns.

New Vision of the Future

The background features several geometric shapes: light blue triangles pointing downwards in the top-left and bottom-right, and dark blue triangles pointing upwards in the bottom-left and top-right. A thick dark blue line forms a partial shape on the right side. The text is centered in a bold, black, sans-serif font.

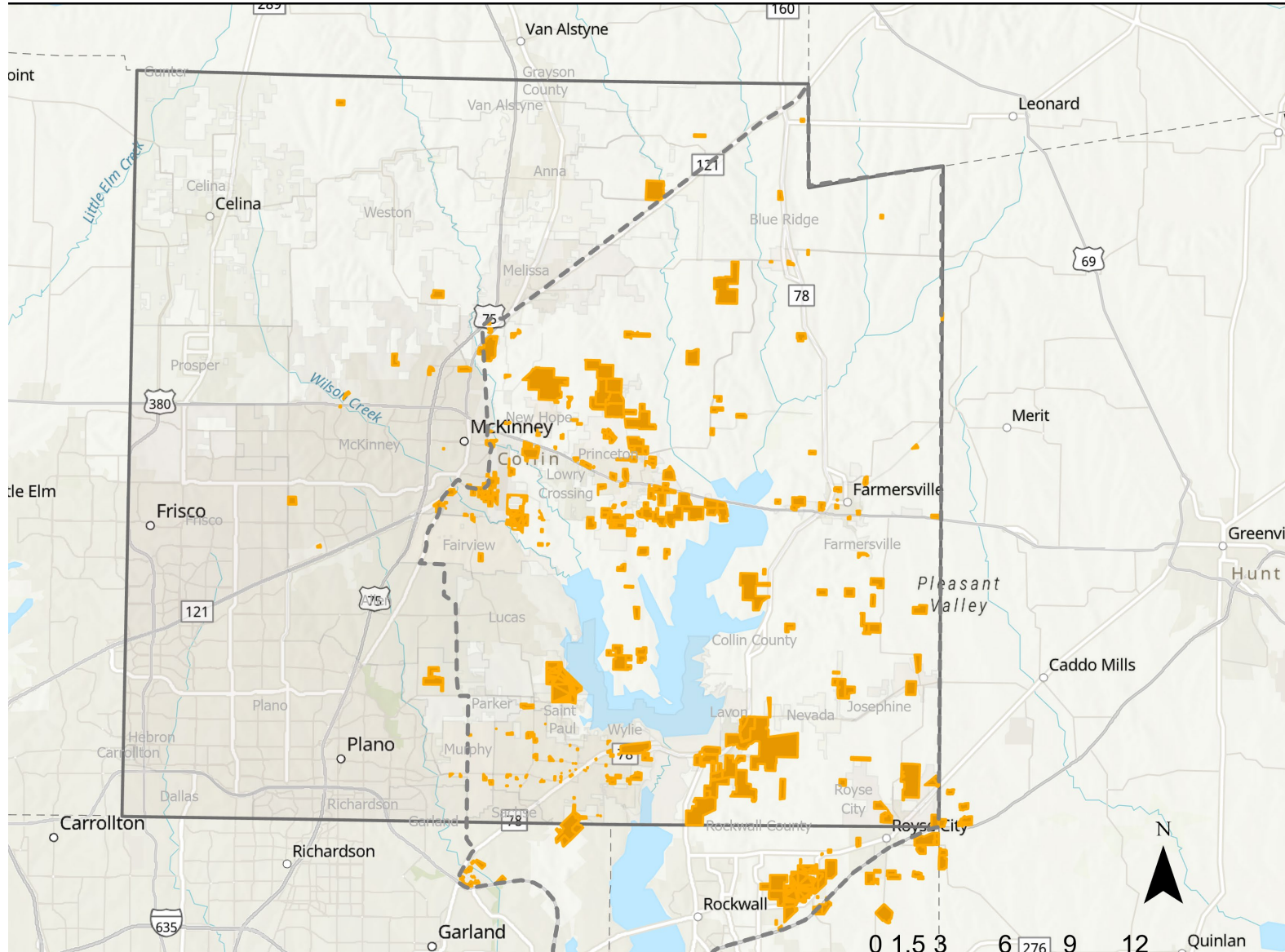
Change in Development Pattern

Legislative Changes

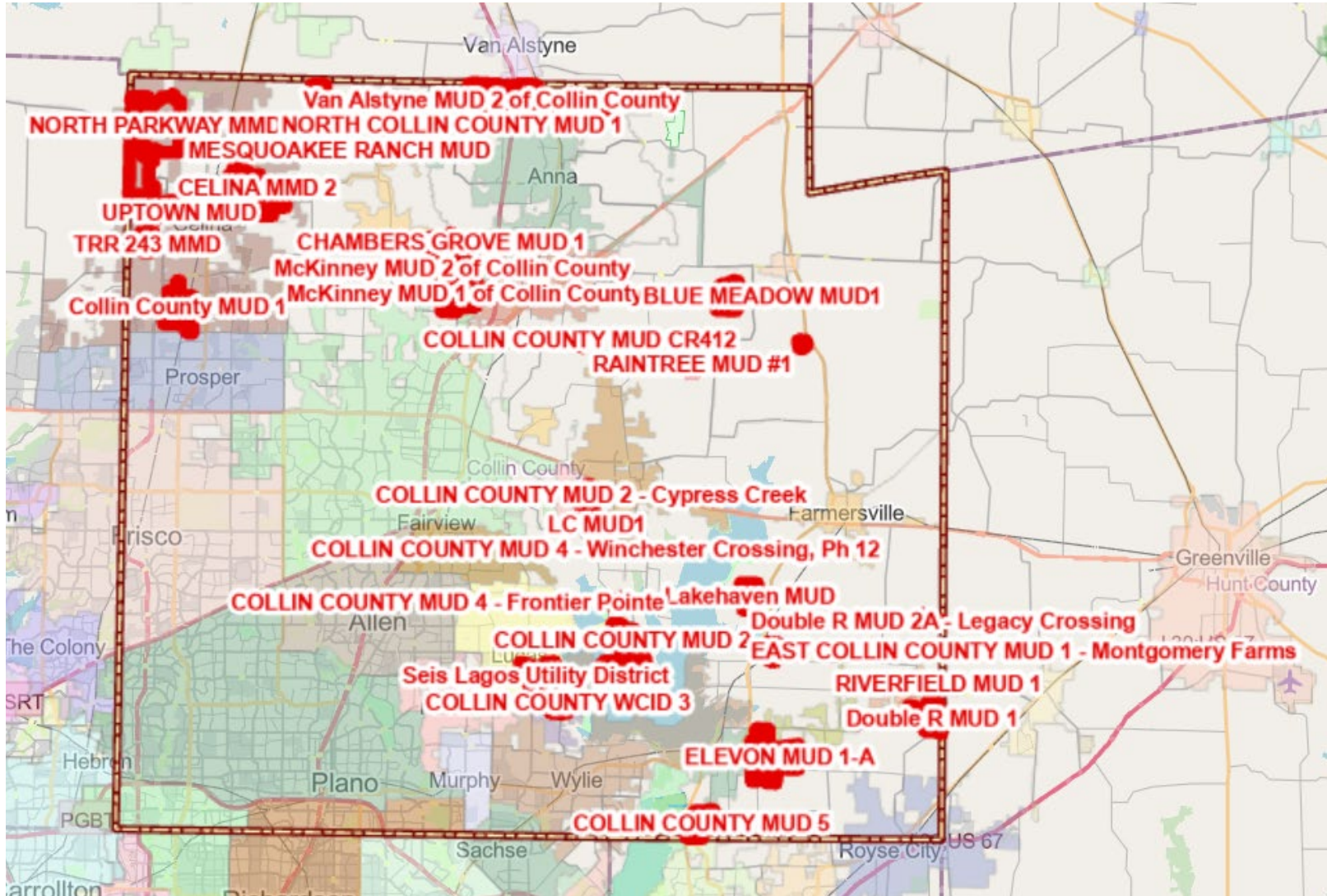
Over last four sessions:

- **Removed cities' authority to annex unilaterally**
- **Established the “shot clock”**
- **Provided ability to “opt out” of ETJ**
- **Prohibited thoroughfare dedication**

New East County Developments



Municipal Utility Districts (MUDs)



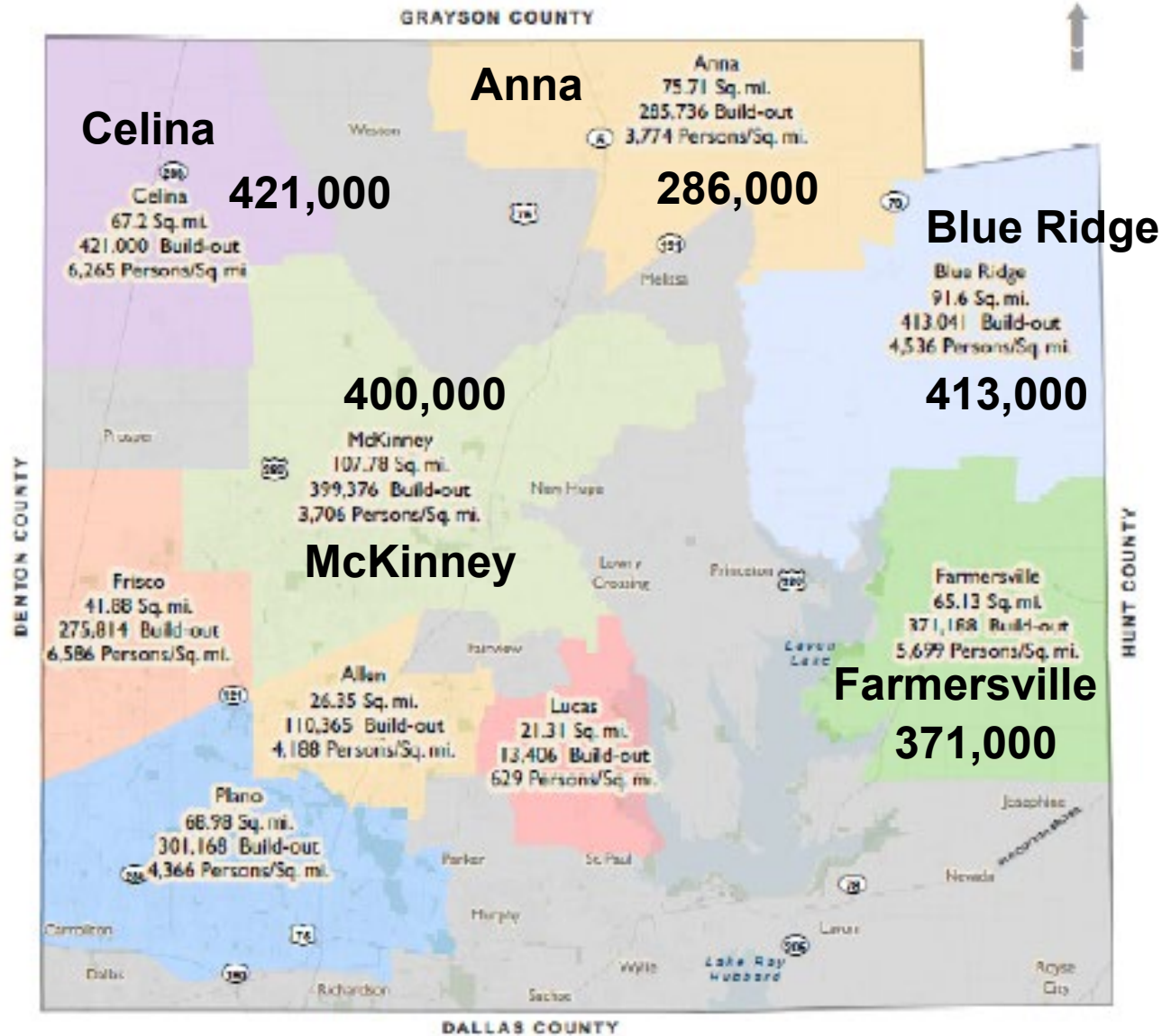
Density Increase

Texas counties do not have authority to control density. 50% of lots <50'

- **50' -> 40' = 23% increase in density;**
- **50' -> 30' = 66%**

3,440,000 projection at build-out could become well over 4,000,000

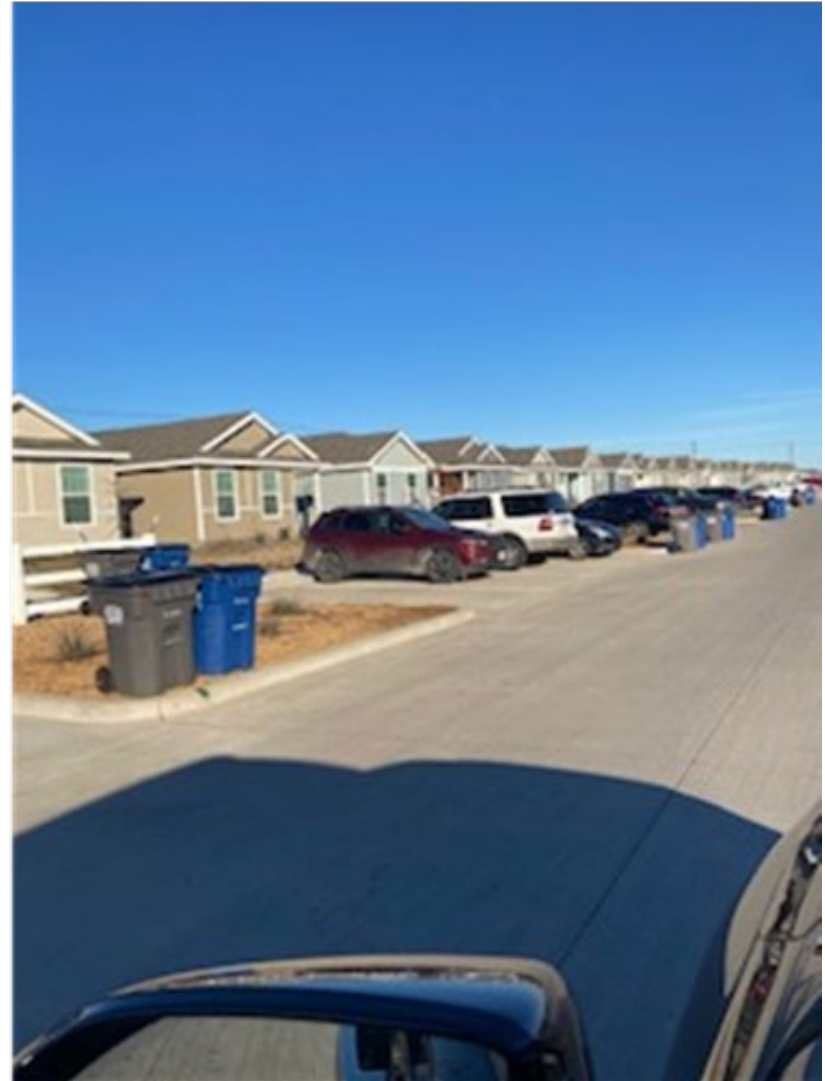
FUTURE GROWTH



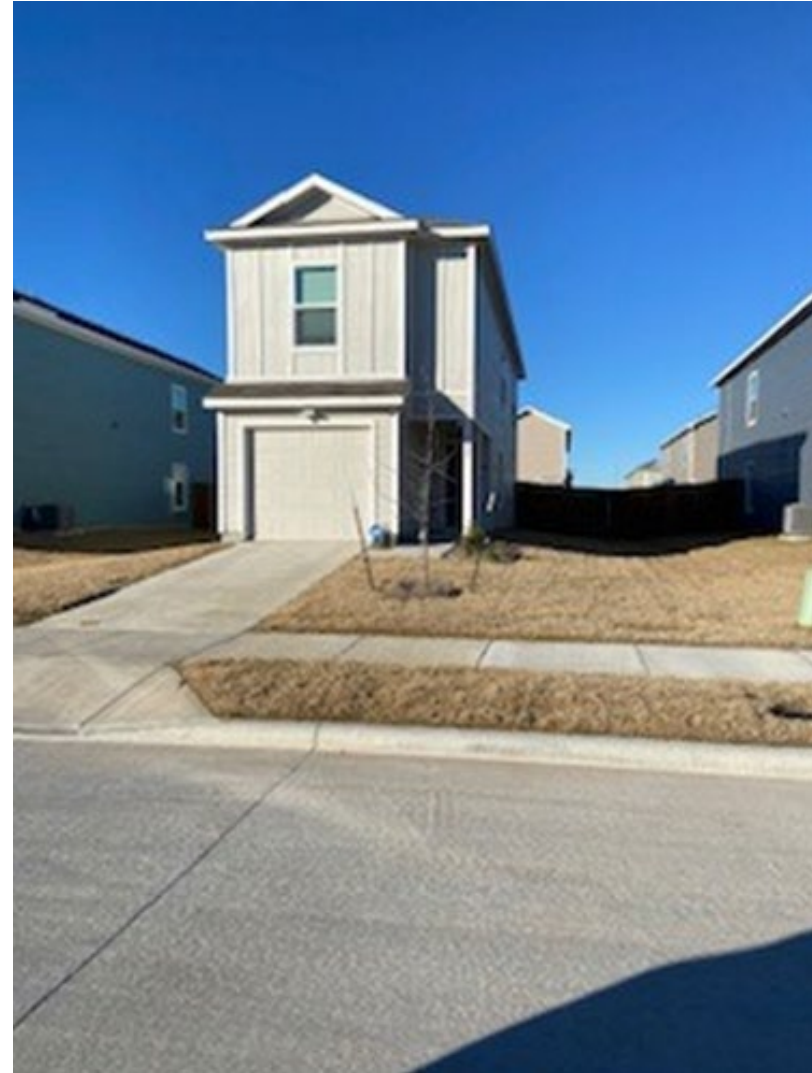
View of Historical Density Outside Cities



Increased Density, No Garages



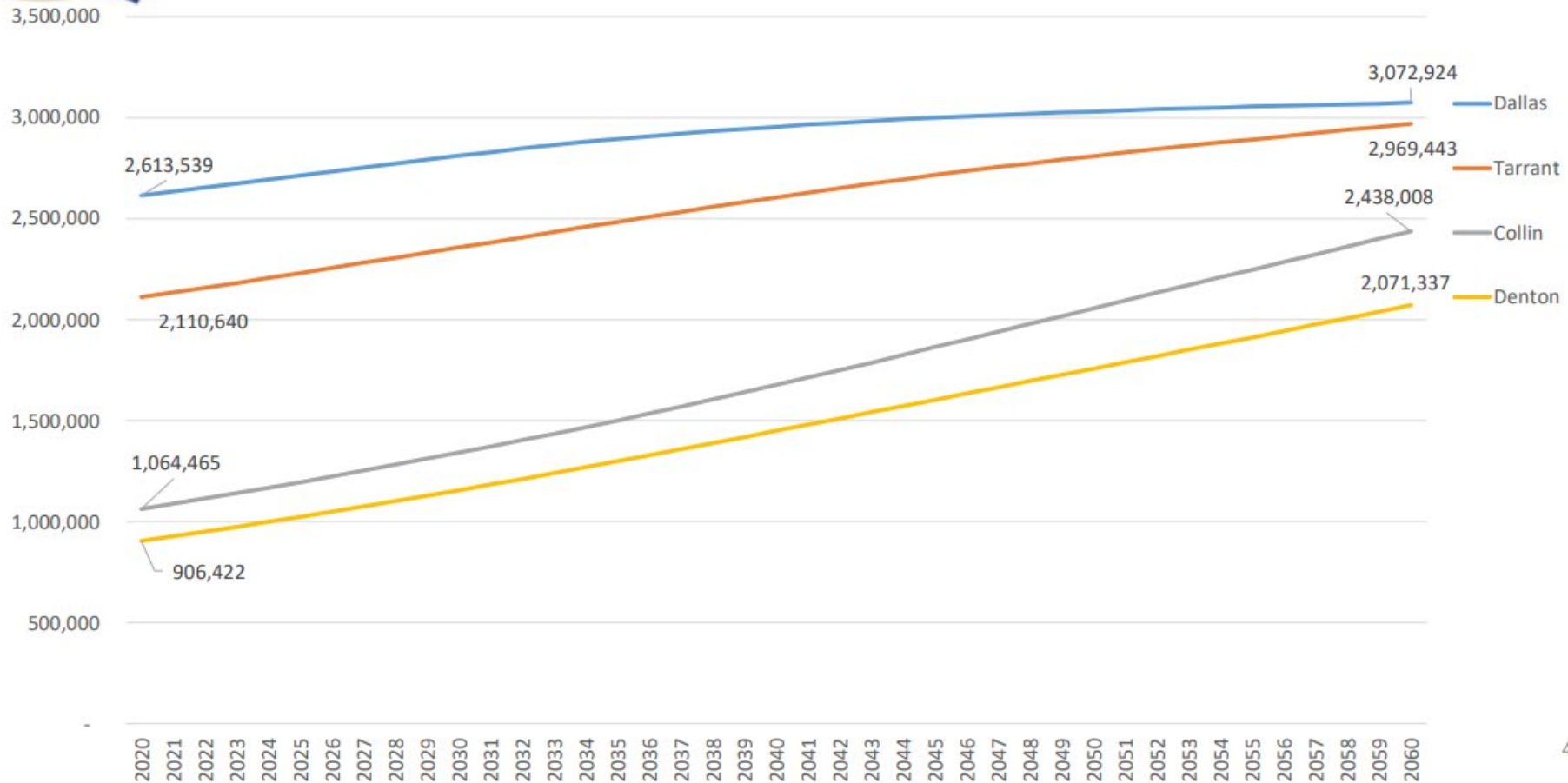
Houses Suited to Narrow Lots



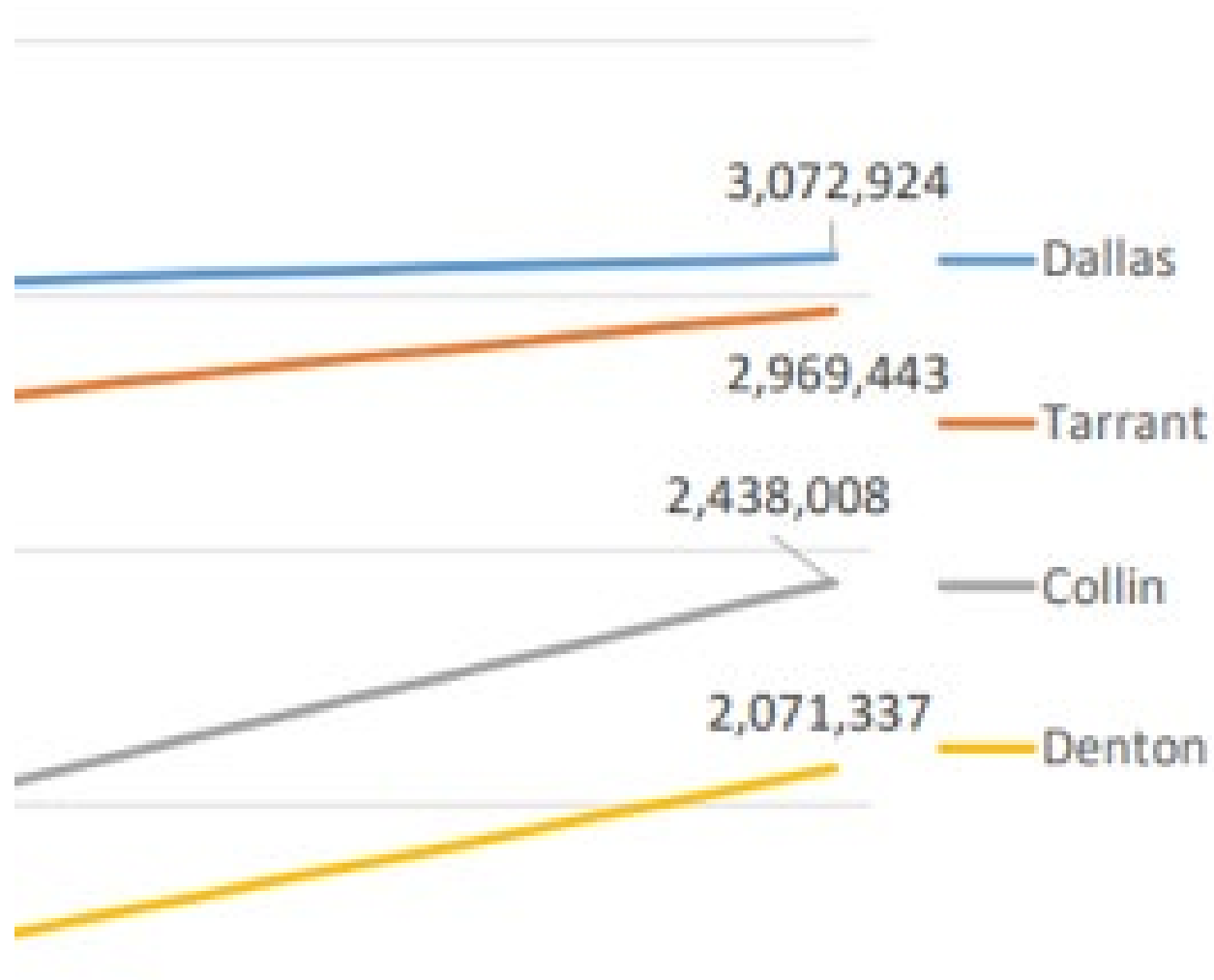
FUTURE GROWTH



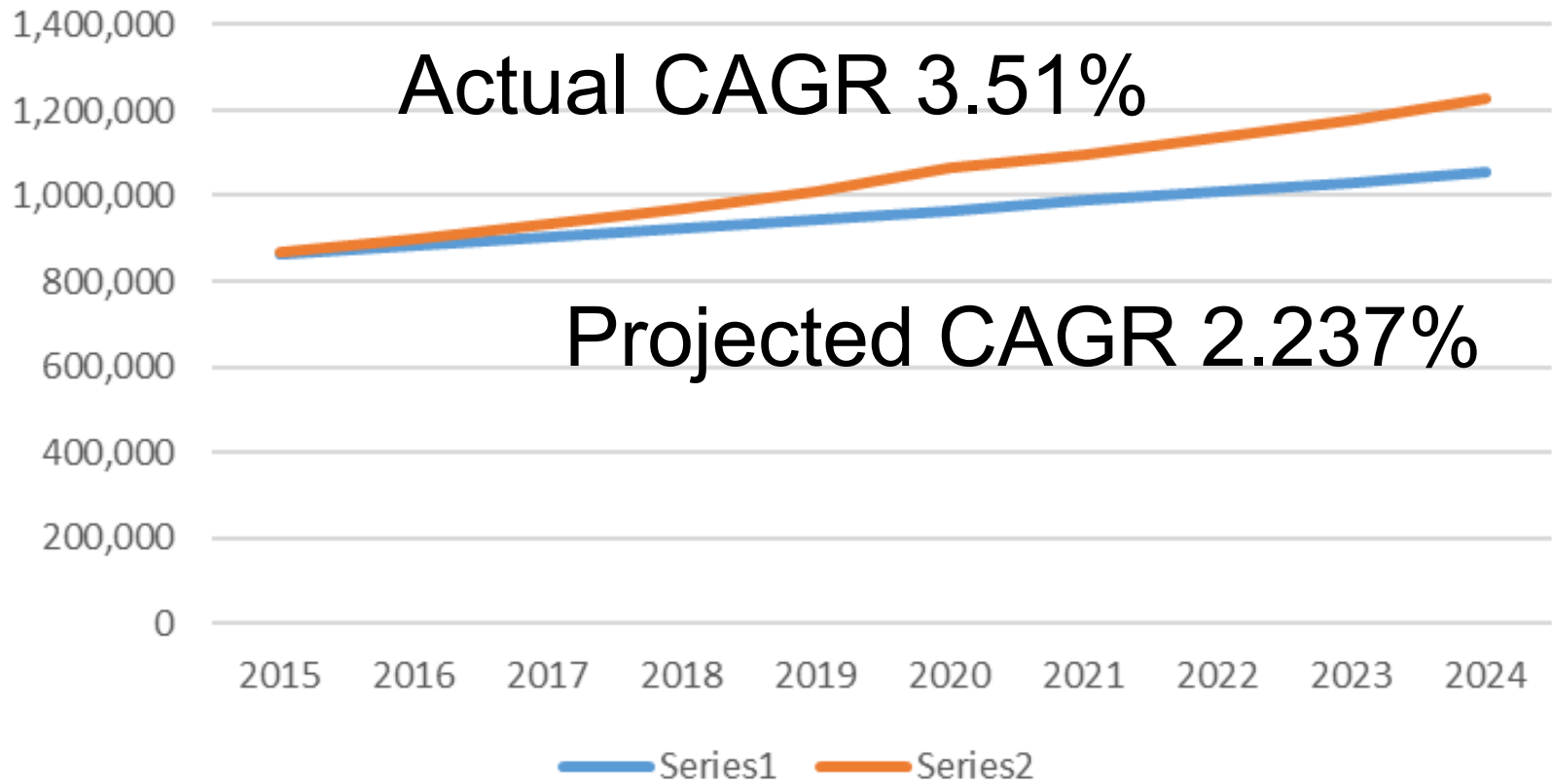
Projected Population for Select Counties, Texas, 2020-2060



FUTURE GROWTH - 2060



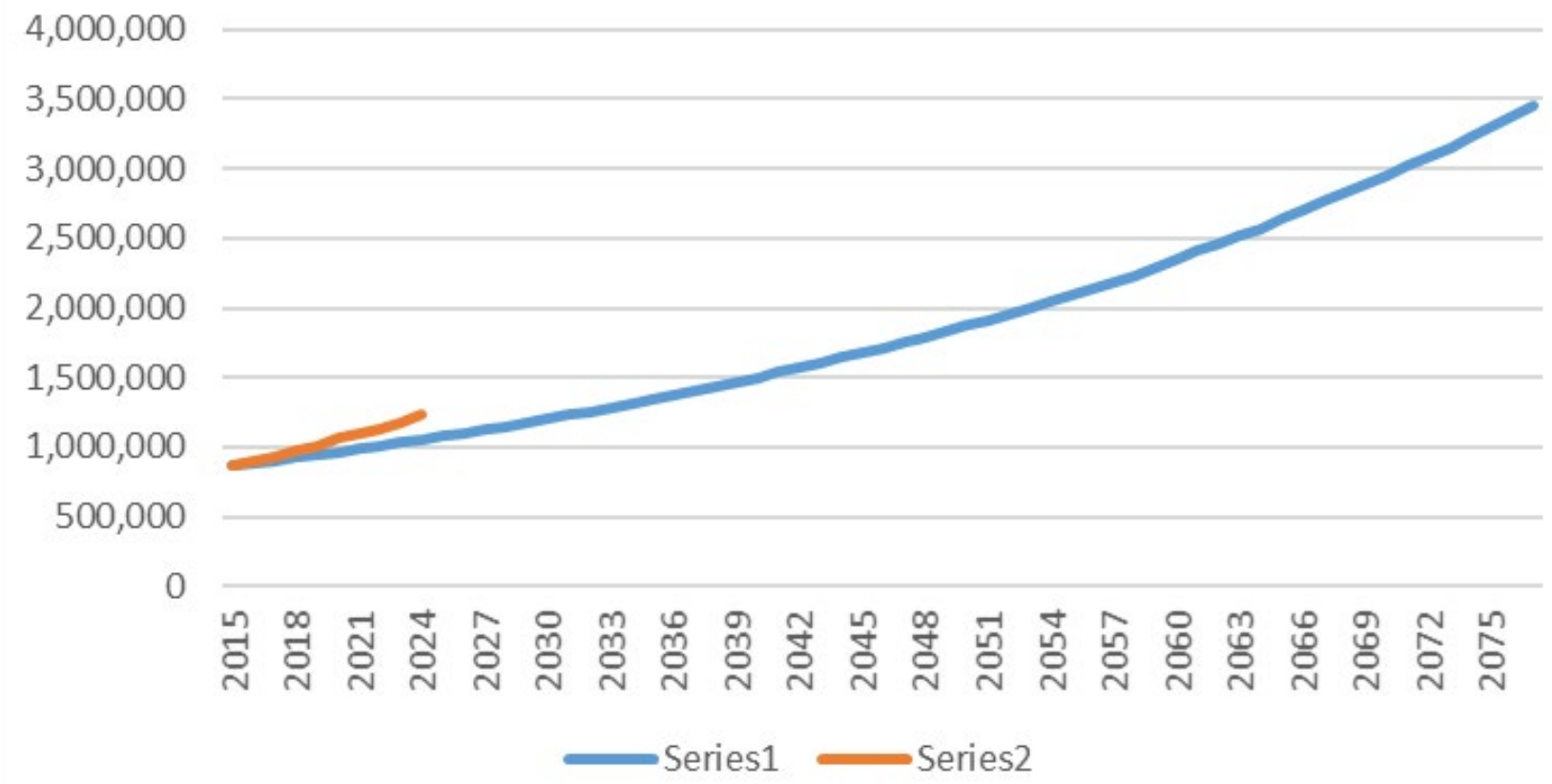
Projected vs Actual, 2015-2024



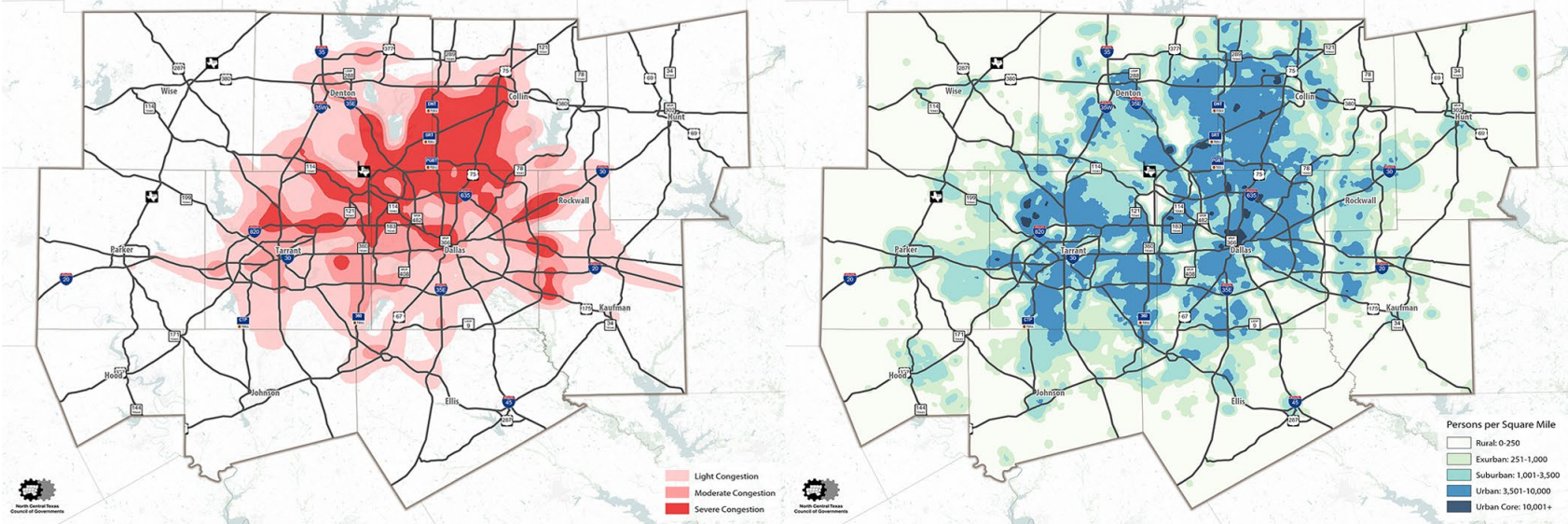
Actual CAGR 3.51%

Projected CAGR 2.237%

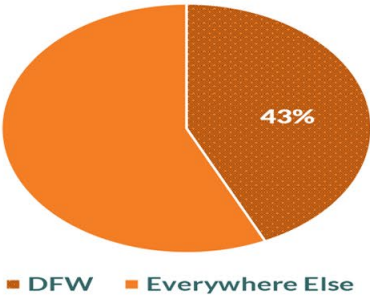
Projected vs Actual, 2015-2077



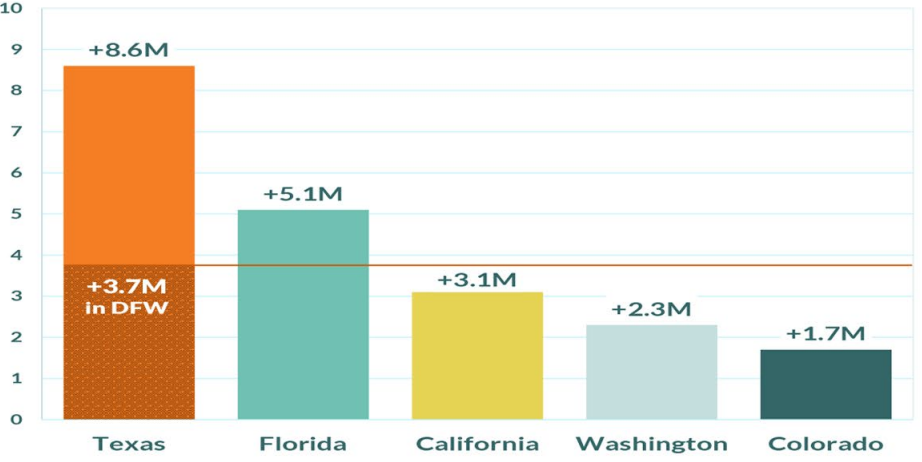
FUTURE GROWTH - 2060



DFW Growth as a Share of TX Projected Growth



Projected Population Change by 2050



State Population Projections source: Cooper Center projections, University of Virginia (2024)
DFW Population Projections source: NCTCOG

2023 Bond Program - \$380M

- **County Roads**
 - **County-managed**
 - **Participation with developers**
- **Controlled Access Roadways**
 - **Outer Loop, NE Fwy, SE Fwy, DNT**
- **Regional Arterials**
 - **Park, McKillop/Myrick/Boorman**
- **Cities**

2023 Bond Program

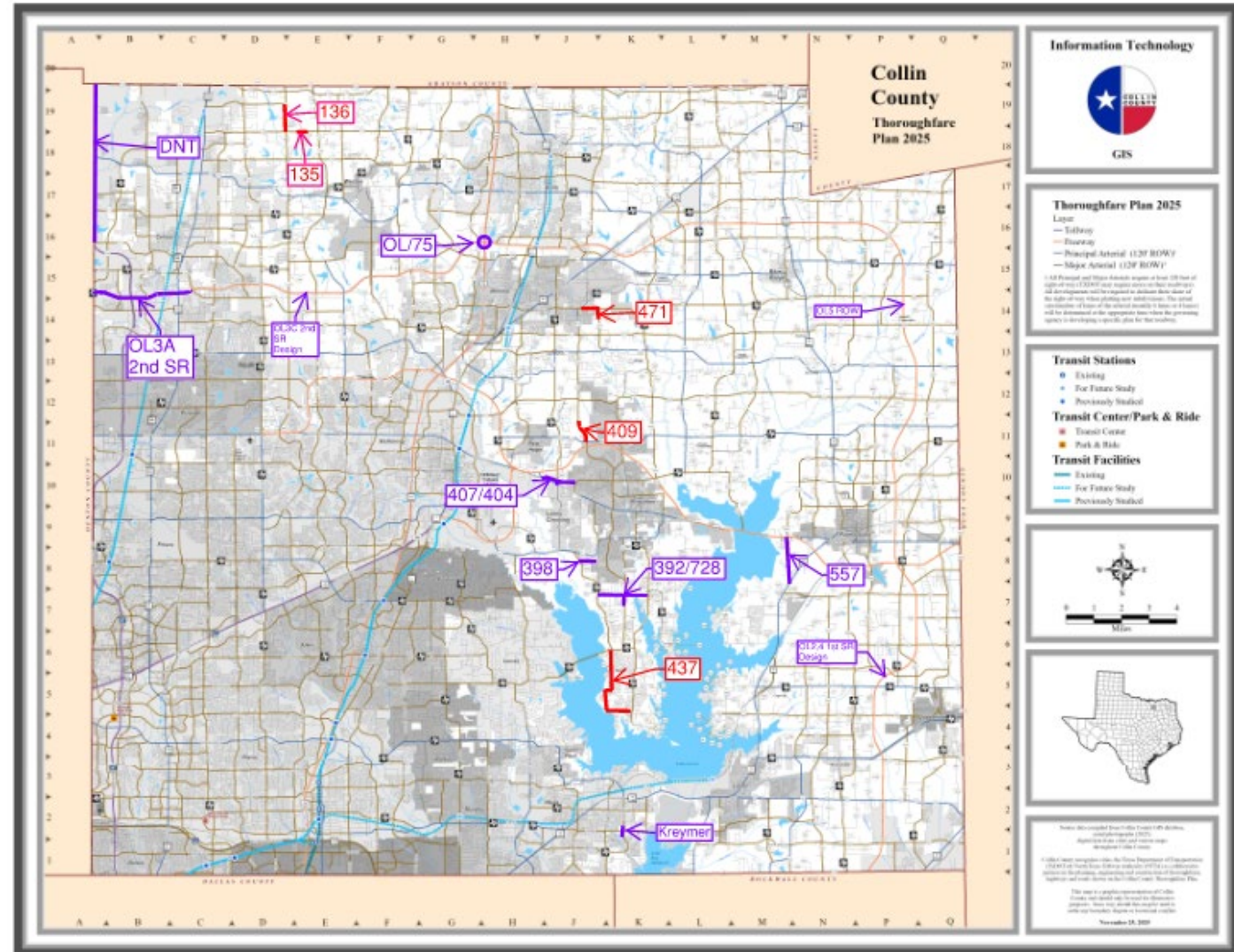
Improvement Projects

County

OL 3A 2nd SR
 OL 3C 2nd SR
 OL 2,4 1st SR
 OL 5 ROW
 CR 557
 CR 398
 CR 392/728
 CR 407/404
 Kreymer Ln
 OL/US75
 DNT NB SR

Developer

CR 437
 CR 135
 CR 136
 CR 409
 CR 471



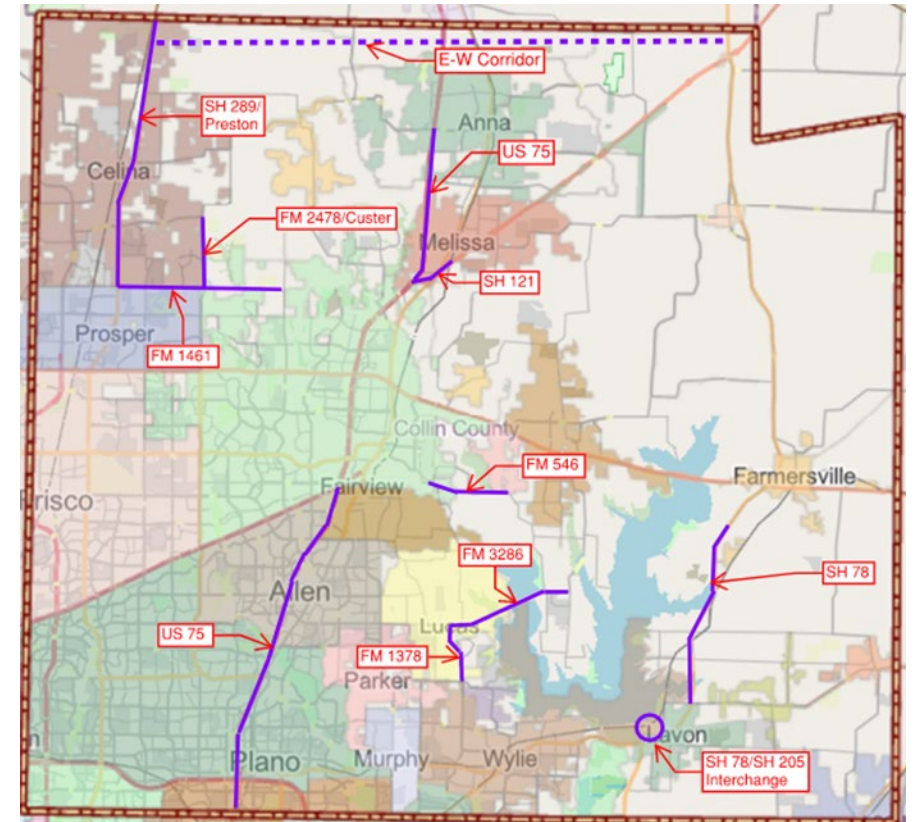
FUTURE GROWTH

Future Bond Program Needs

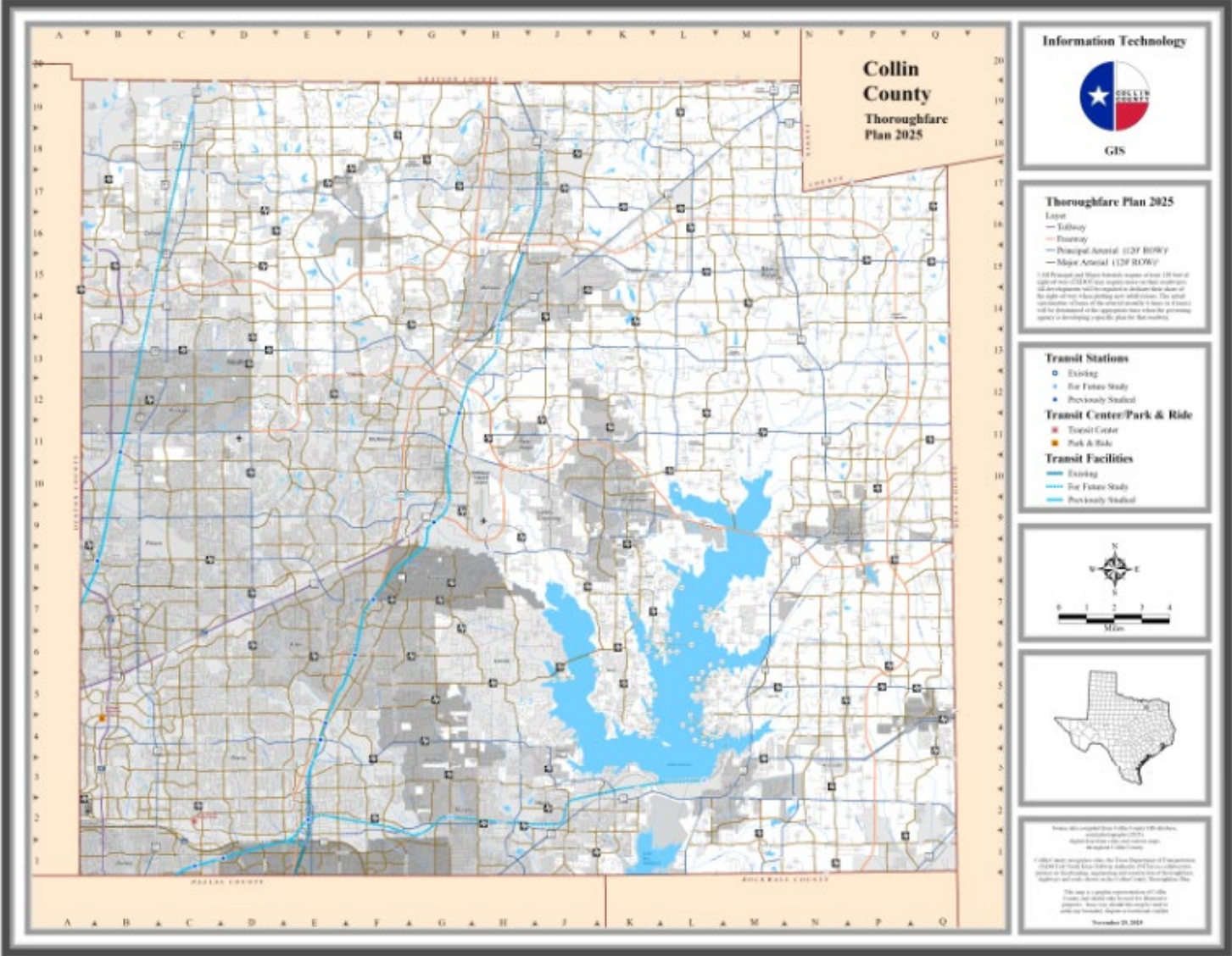
DNT NB SR (8 mi)	\$ 60
OL 3B/C 2nd SR Construction (11 mi)	\$ 80
McKillop/FM 546 Construction - partial	\$ 80
OL 2, 4 1st SR Construction (14 mi)	\$ 100
More County Roads	\$ 100
More participation with developers	\$ 50
Intersection/traffic impr to OL	\$ 20
Grade separations for OL	\$ 100
City Projects	\$ 100
Southeast Freeway - ROW	\$ 50
Southeast Freeway - beginning construction?	
Feasibility Study for Collin-Grayson Corridor	
Major bridges (FM 543/Bucees over Trinity R)	

Improvements to TxDOT Highways

Potential TxDOT Projects, November, 2025					
Legend for Headings in Chart					
<i>MTP 2035 vpd</i> = projected 2035 traffic from 2050 MTP					
<i>2035 Capacity</i> = vpd capacity in 2035					
<i>2035 Deficit</i> = 2035 Capacity minus MTP 2035 vpd					
State Roadway	MTP 2035 vpd	2035 Capacity	2035 Deficit	Lanes Added	Cost Est (Millions)
US 75: SH 121 - FM 455/White St				6l to 8l	\$ 197
FM 3286/FM 546: FM 1378 - FM 982 (incl bridges)	40,000	18,000	-22,000	2l to 4l	\$ 205
SH 289: FM 1461/Frontier - N Bus 289C	57,400	37,000	-20,400	4l to 6l	\$ 96
SH 121: US 75 - SH 5	55,700	37,000	-18,700	4l to 6l	\$ 19
FM 1461/Frontier/Lake Forest: Bloomdale/CR 123 - SH 289/Preston	35,500	18,000	-17,500	2l to 4l	\$ 124
FM 546: Spur 399 - CR 393	34,400	18,000	-16,400	2l to 4l	\$ 86
FM 1378: FM 3286 - FM 2514 (Parker Rd)	33,800	18,000	-15,800	2l to 4l	\$ 40
SH 78: FM 6 - CR 557	27,300	18,000	-9,300	2l to 4l	\$ 143
FM 2478/Custer: FM 1461 to FM 455	24,800	18,000	-6,800	2l to 4l	\$ 137
Total					\$ 1,047



Transit



The background features several geometric shapes. In the top-left and bottom-right corners, there are light blue triangles pointing towards the center. In the top-right and bottom-left corners, there are dark blue shapes that look like stylized chevrons or arrows pointing towards the center. The word "Discussion" is centered in a bold, black, sans-serif font.

Discussion