



October 31, 2025

Lauren Plouff
Broaddus & Associates
2330 Bloomdale Rd
McKinney, TX 75071

Subject: Collin County Healthcare Facility, Parking Garage, and Medical Examiners
Revised PCO No. 068; RFI #255 Lower-Level PG Wall Access Opening.

Dear Lauren:

Please find the attached revised Request for Change (PCO) No. 068. This proposal is submitted for an addition of Seven Thousand Two Hundred and Nine Dollars (\$7,209.00), reflective of the following items:

- **Updated lower-level HVAC equipment access adjacent to Storage L05 per updated RFI 255 response:**
 - **Includes additional material and labor hollow metal door, frame, and hardware.**
 - **Includes additional electrical material and labor for added light fixtures and new and modified associated circuits and breakers per RFI response.**
- ***This PCO will be an add in the amount of \$7,209.***

We have not proceeded with this change. Please sign the attached request for change recap indicating approval of this change.

Sincerely,

Jim Terhune
Sr. Project Manager

CC: Peter Hernandez , PGAL

Collin County PGAL - Dallas (Addison) Project Manager Accounting

Project:

224057- Collin County Public Health Buildings
2300 Bloomdale Rd
McKinney, TX 75071

Owner :

Collin County
2300 Bloomdale Rd; Suite 3160
McKinney, TX 75071

From:

The Christman Company

Issue No. 068 - RFI #255 Lower Level PG Wall Access Opening **Amount**

Item: I Parking Garage

Phase	Description	Abbreviation	Amount
20B-	Doors Frames and Hardware	SUBS	3,820.00
28 -	Electrical	SUBS	2,626.00
41 -4110	Payment and Performance Bonds	OTHER	55.00
41 -4120	Builder's Risk Insurance	OTHER	5.00
60 -	Overhead & Profit	OTHER	655.00
99 -	General Liability Insurance	OTHER	48.00
Subtotal Item I			7,209.00
			0.00
Request for Change Total:			\$7,209.00

Qualifications:

- This Issue is Original Revised Budget Only Firm Quotation.
- Contract time will be Increased by Decreased by () work days; Unchanged Other: _____
- The Christman Company has has not proceeded with the work, and this Issue must be accepted within () work days.
- Funded by Contract change Allowance Contingency Other: _____

Owner and/or Architect Action:

- Approved Proceed as described above (cost and schedule changes to be finalized under a revised Issue)
- Rejected Other: _____

Authorization:

The Owner and/or Architect hereby direct The Christman Company to proceed with the performance of the work as described above and/or in any additional documents referenced herein. It is understood that the amount of this Request for Change, if noted as "Budget Only" under Qualification I., will be revised as necessary upon determination of final costs and included in the next Owner Change Order accordingly. If noted as "Firm Quotation" under Qualification I., the amount of this Request will be included in the next Owner Change Order. In addition, all costs included herein may be included in the next payment application as if they had been included in an Owner Change Order or Construction Change Directive.

Authorized By Owner:

Collin County
2300 Bloomdale Rd; Suite 3160
McKinney, TX 75071

Accepted By Architect

PGAL - Dallas (Addison)
14135 Midway Road, Suite G-200
Addison TX 75001

Submitted By Contractor:

The Christman Company

By: _____ **By:** _____ **By:** _____

Date: _____ **Date:** _____ **Date:** _____



The Christman Company
130 E John W. Carpenter Freeway, Suite 200
Irving, Texas 75062
P: (469) 501-5534

Project: 224057 Collin County - Medical Campus
2330 Bloomdale Rd.
McKinney, Texas 75071

RFI #255: PG - Lower-Level Wall Access Opening to Exhaust Fans Behind CMU Partition

Revision	0	Status	Open
To	Peter Hernandez (PGAL) <i>(Response Required)</i> Andrew Murphy (Summit Consultants, Inc.) <i>(Response Required)</i>	From	David Beebe (The Christman Company (DFW)) 130 E John W. Carpenter Freeway Suite 200 Irving, Texas 75062
Date Initiated	Aug 19, 2025	Due Date	Aug 28, 2025
Location	Parking Garage	Project Stage	Course of Construction
Cost Impact	TBD	Schedule Impact	TBD
Spec Section		Cost Code	
Drawing Number	PG-A2.01 & PG-M2.01	Reference	
Linked Drawings			
Received From	David Beebe (The Christman Company (DFW))		
Copies To	David Beebe (The Christman Company (DFW)), Paul Bonnette (PGAL), Aaron Capetillo (The Christman Company (DFW)), James Case (The Christman Company (DFW)), Anthony Ferraro (The Broaddus Companies), Bob Guill (The Christman Company (DFW)), Brad Harris (Collin County), Carolina Haylow (The Christman Company (DFW)), Peter Hernandez (PGAL), Tim Konganda (PGAL), Cooper Martindale (Summit Consultants, Inc.), Rodney Mitchell (The Broaddus Companies), Mariah Moore (The Christman Company (DFW)), Andrew Murphy (Summit Consultants, Inc.), Lauren Plouff (The Broaddus Companies), Jim Russell (The Christman Company (DFW)), Jim Terhune (The Christman Company (DFW)), Mark Thomas (PGAL), Pierre Zoungrana (PGAL)		

Activity

Question

Question from David Beebe The Christman Company (DFW) on Friday, Aug 15, 2025 at 02:53 PM CDT

Please review the attached and advise on the following:

1. Please advise on the type and size of wall access opening for this lower-level parking garage area.
2. Please clarify if there is any required lighting to be installed in this area.
3. Upon completion of the scheduled CMU partition, this area will be sealed off from ventilation and lighting. Will there be any signage required to be installed at any wall access location cautioning others of a confined space?

Attachments

[RFI 255 - PG - Lower-Level Wall Access Opening to Exhaust Fans Behind CMU Partition.pdf](#)

Awaiting an Official Response

All Replies

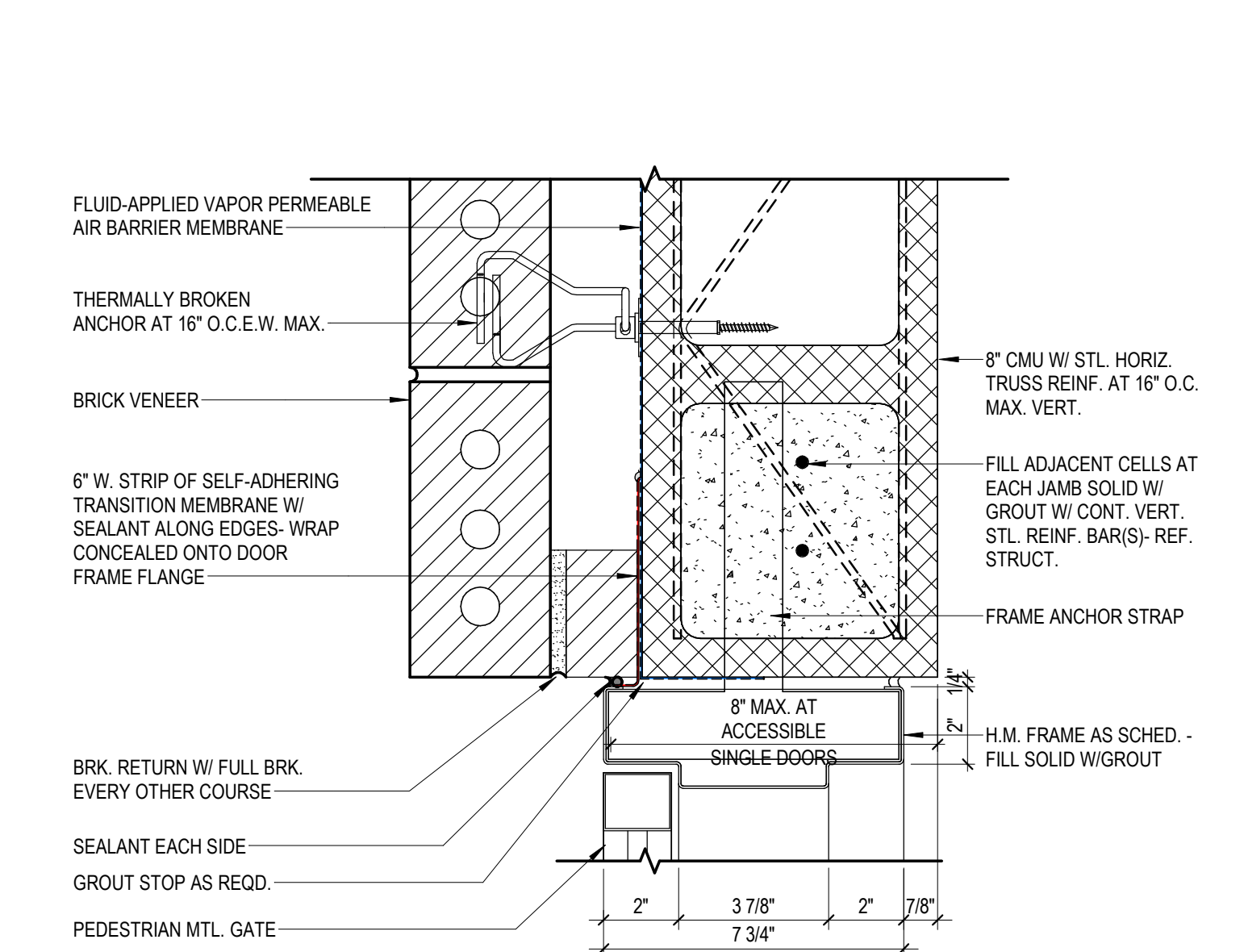
Response from Andrew Murphy Summit Consultants, Inc. on Wednesday, Sep 3, 2025 at 04:01 PM CDT

This storage area is closed to the public and restrict to access by authorized personnel. That being the case, I think an opening in the wall without a door is acceptable. A dedicated in-line toggle switch should be provided in this space, serving the fixtures that are added to this space. It should be viewed like a crawlspace. We will provide an updated sheet showing a gap in the wall and updated lighting fixtures.

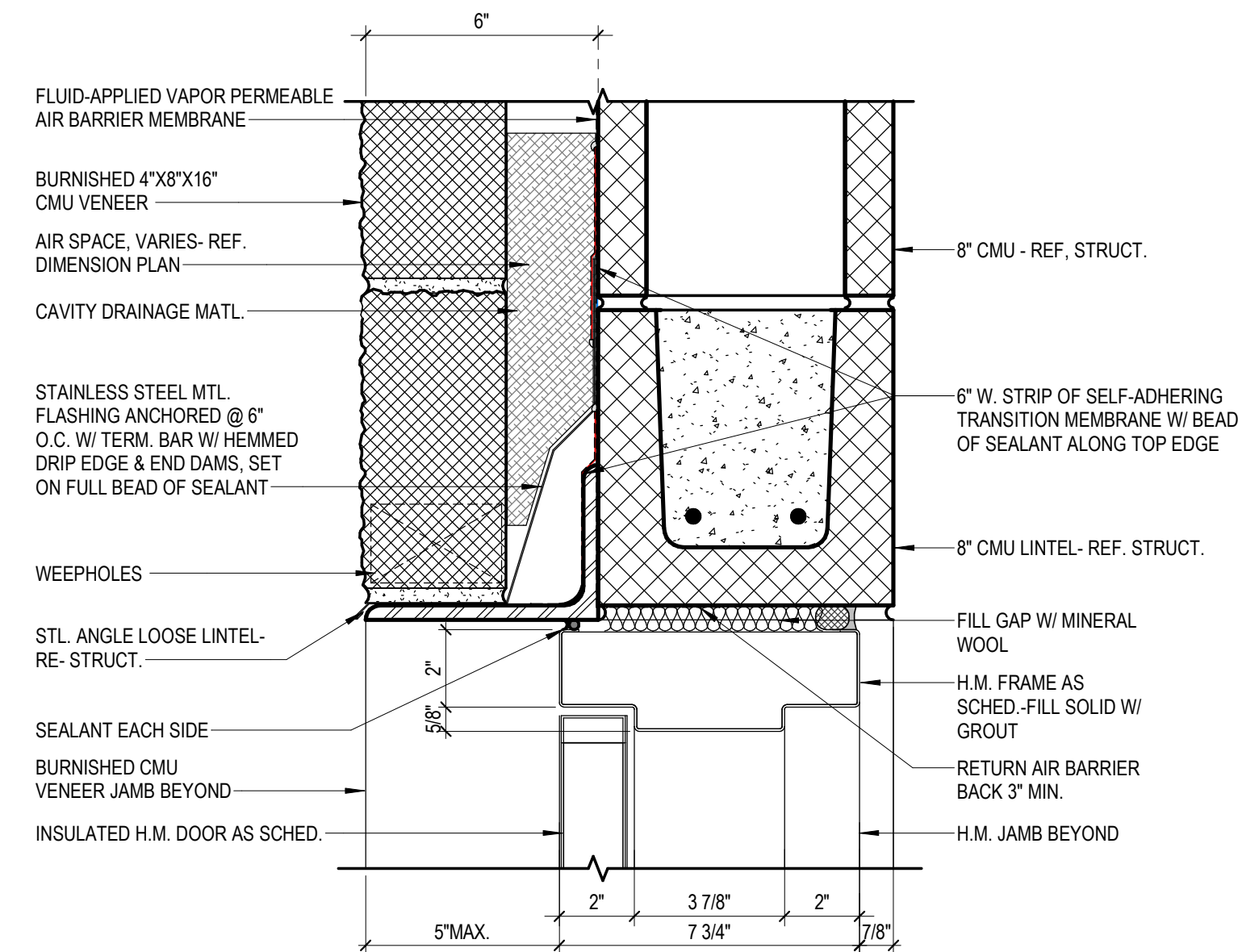
PLEASE SEE ATTACHED UPDATED SHEETS PG-A0.30 - DOOR SCHEDULE & PG-A2.01 - LOWER LEVEL FLOOR PLAN, FOR NEW DOOR LOCATION TO THE MECHANICAL SPACE.

REFER TO ELECTRICAL SHEETS FOR THE UPDATED LIGHT FIXTURE PLAN FOR THE MECHANICAL SPACE.

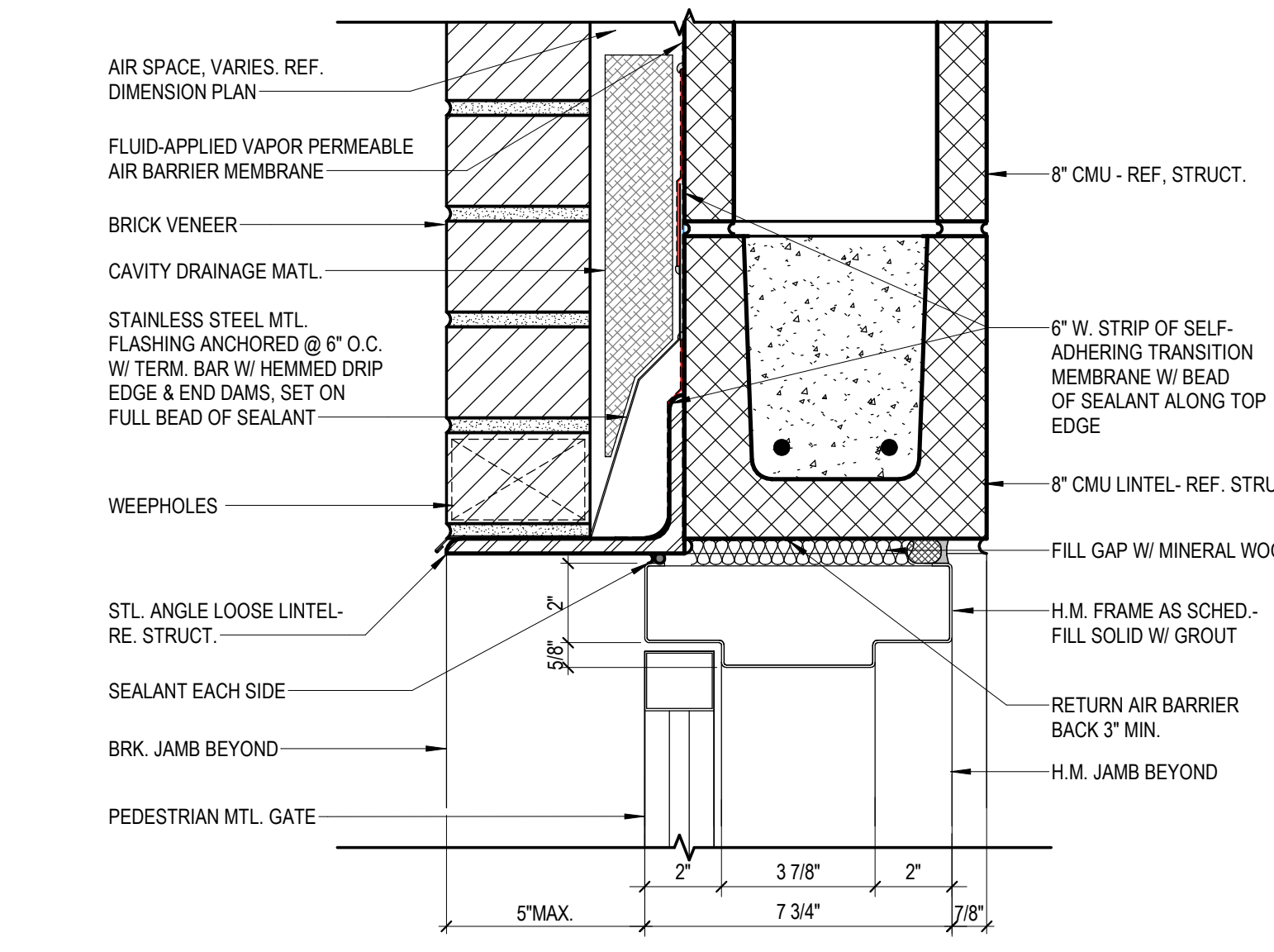
Level		Mark		Room No.		Room Name		Size		Panel		Frame		Frame		Details on A0.35 UNO		Fire		General	
Level	Mark	Room No.	Room Name	Width	Height	THK	Matl	Panel	Finish	Matl	Type	Finish	Depth	Jamb	Head	Sill	Rating	HDWR	Remarks	Remarks	Remarks
LOWER LEVEL	L01A	L01	PARKING LOWER LEVEL	12'-0"	9'-2"	13/4"	ALUM	HC	PT	HM	00H.C	HM	6"					32.0		OVERHEAD COILING SECURITY GRILLE	
LOWER LEVEL	L01B	L01	PARKING LOWER LEVEL	25'-0"	9'-2"	13/4"	ALUM	HC	PT	HM	00H.C	HM	6"					32.0		OVERHEAD COILING SECURITY GRILLE	
LOWER LEVEL	L01C	L01	PARKING LOWER LEVEL	3'-0"	8'-0"	13/4"	HM	F	PT	HM	003	PT-21	6"	9A/0.30	8A/0.30			32.5		PEDESTRIAN METAL GATE W/ 2" JAMB	
LOWER LEVEL	L01D	L01	PARKING LOWER LEVEL	3'-0"	8'-0"	13/4"	HM	F	PT	HM	003	PT-21	6"	9A/0.30	8A/0.30			32.5		PEDESTRIAN METAL GATE W/ 2" JAMB	
LOWER LEVEL	L01E	L01	PARKING LOWER LEVEL	3'-0"	8'-0"	13/4"	HM	F	PT	HM	003	PT-21	6"	9A/0.30	8A/0.30			32.5		PEDESTRIAN METAL GATE W/ 2" JAMB	
LOWER LEVEL	L01F	L01	PARKING LOWER LEVEL	3'-0"	8'-0"	13/4"	HM	F	PT	HM	003	PT-22	6"	7A/0.30	6A/0.30			45 MIN 33.0			
LOWER LEVEL	L01G	L01	PARKING LOWER LEVEL	6'-0"	7'-0"	13/4"	HM	F	PT	HM	001	PT-22	6"	7A/0.30	6A/0.30			30 MIN 34.5			
LOWER LEVEL	L05F	L05	STORAGE	3'-0"	4'-4 3/4"	13/4"	HM	F	PT	HM	003	PT-22	6"	9A/0.30	8A/0.30			33.0		MECHANICAL USE ACCESS ONLY	
LOWER LEVEL	L06	L06	FIRE RISER ROOM	8'-0"	8'-0"	13/4"	ALUM	F	PT	HM	003	PT-22	6"	9A/0.30	8A/0.30			31.0			
LOWER LEVEL	L07	L07	DOMESTIC WATER	3'-0"	8'-0"	13/4"	HM	F	PT	HM	003	PT-22	6"	9A/0.30	8A/0.30			31.0			
LEVEL 1	100A	100	PARKING LEVEL 1	25'-0"	8'-8"	13/4"	ALUM	HC	PT	HM	00H.C	HM	6"						32.0		OVERHEAD COILING SECURITY GRILLE
LEVEL 1	100B	100	PARKING LEVEL 1	3'-0"	8'-0"	13/4"	HM	F	PT	HM	003	PT-21	6"	9A/0.30	8A/0.30			30.5		PEDESTRIAN METAL GATE W/ 2" JAMB	
LEVEL 1	100C	100	PARKING LEVEL 1	3'-0"	8'-0"	13/4"	HM	F	PT	HM	003	PT-21	6"	11A/0.30	10A/0.30			30.5		PEDESTRIAN METAL GATE W/ 2" JAMB	
LEVEL 1	102A	100	PARKING LEVEL 1	6'-0"	8'-0"	13/4"	HM	F	PT	HM	001	PT-22	6"	5A/0.30	4A/0.30			45 MIN 31.5			
LEVEL 1	102B	100	ELECT.	3'-0"	8'-0"	13/4"	HM	F	PT	HM	003	PT-22	6"	5A/0.30	4A/0.30			45 MIN 33.5			
LEVEL 1	103	103	DATA	3'-0"	8'-0"	13/4"	HM	F	PT	HM	003	PT-22	6"	5A/0.30	4A/0.30			45 MIN 33.0			
LEVEL 1	104	101	MAIN TOWER 01	16'-3"	6'-8"	2 1/2"	ALUM	F	PT	HM											OVERHEAD COILING SECURITY GRILLE
LEVEL 2																					
LEVEL 2	202	202	STORAGE	6'-0"	8'-0"	13/4"	HM	F	PT	HM	001	PT-22	6"	5A/0.30	4A/0.30			45 MIN 35.0			
LEVEL 2	203	203	SECURITY	3'-0"	8'-0"	13/4"	HM	F	PT	HM	003	PT-22	6"	5A/0.30	4A/0.30			33.0			



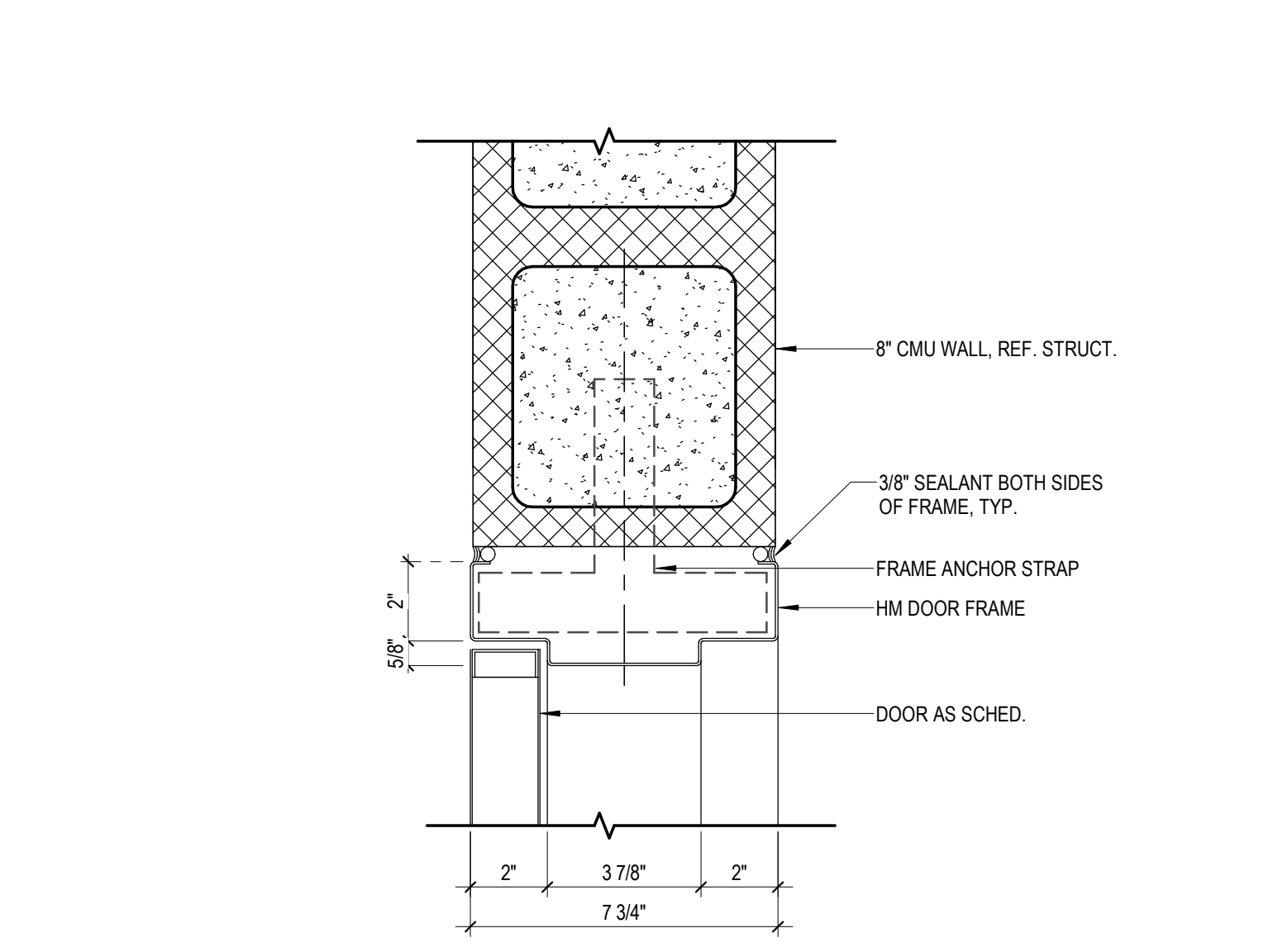
H.M. DOOR JAMB DETAIL AT BRICK VENEER & 8" CMU 3" = 1'-0" (11)



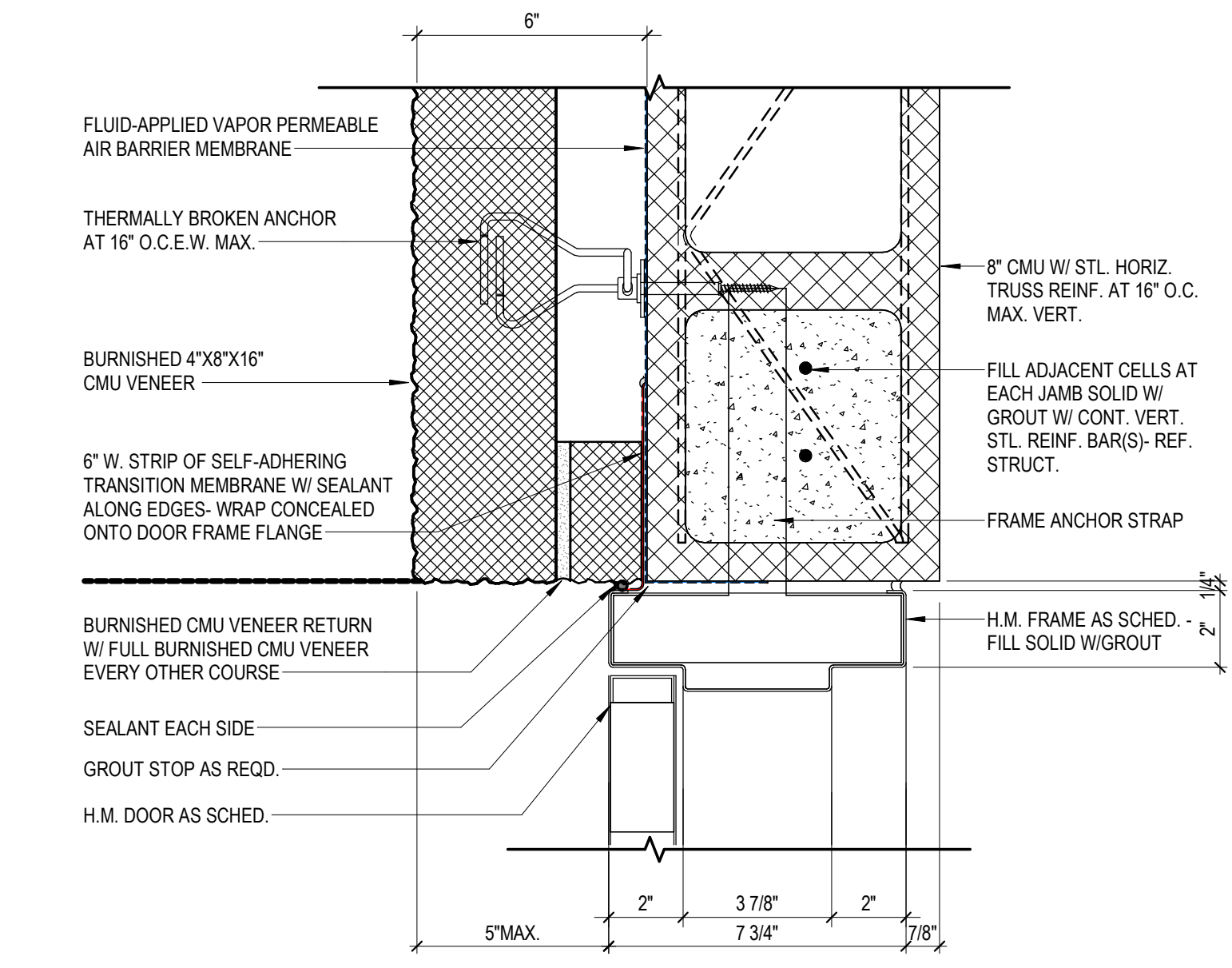
DOOR HEAD DETAIL AT BURNISHED CMU VENEER & CMU 3" = 1'-0" (8)



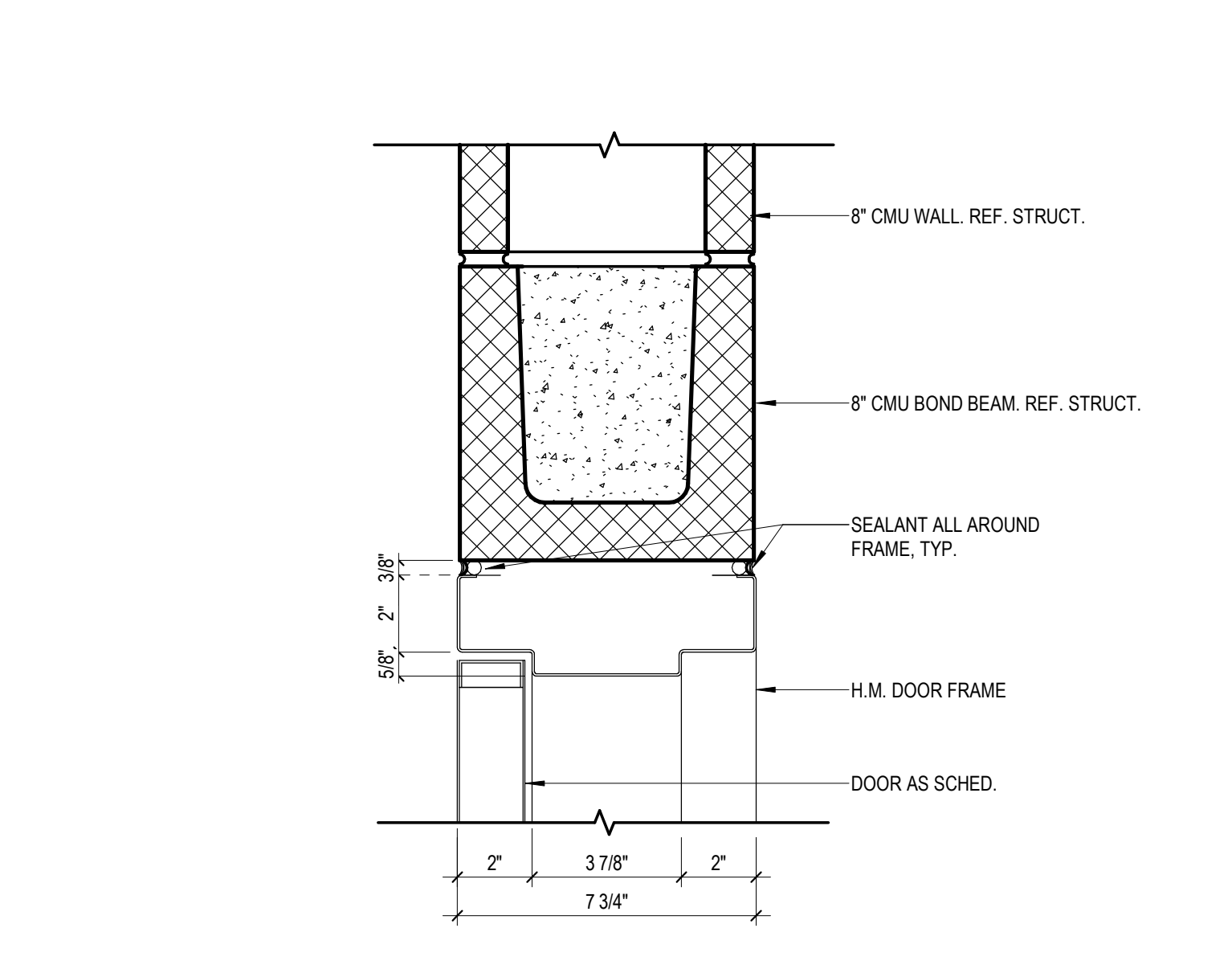
DOOR HEAD DETAIL AT BRICK VENEER & CMU 3" = 1'-0" (10)



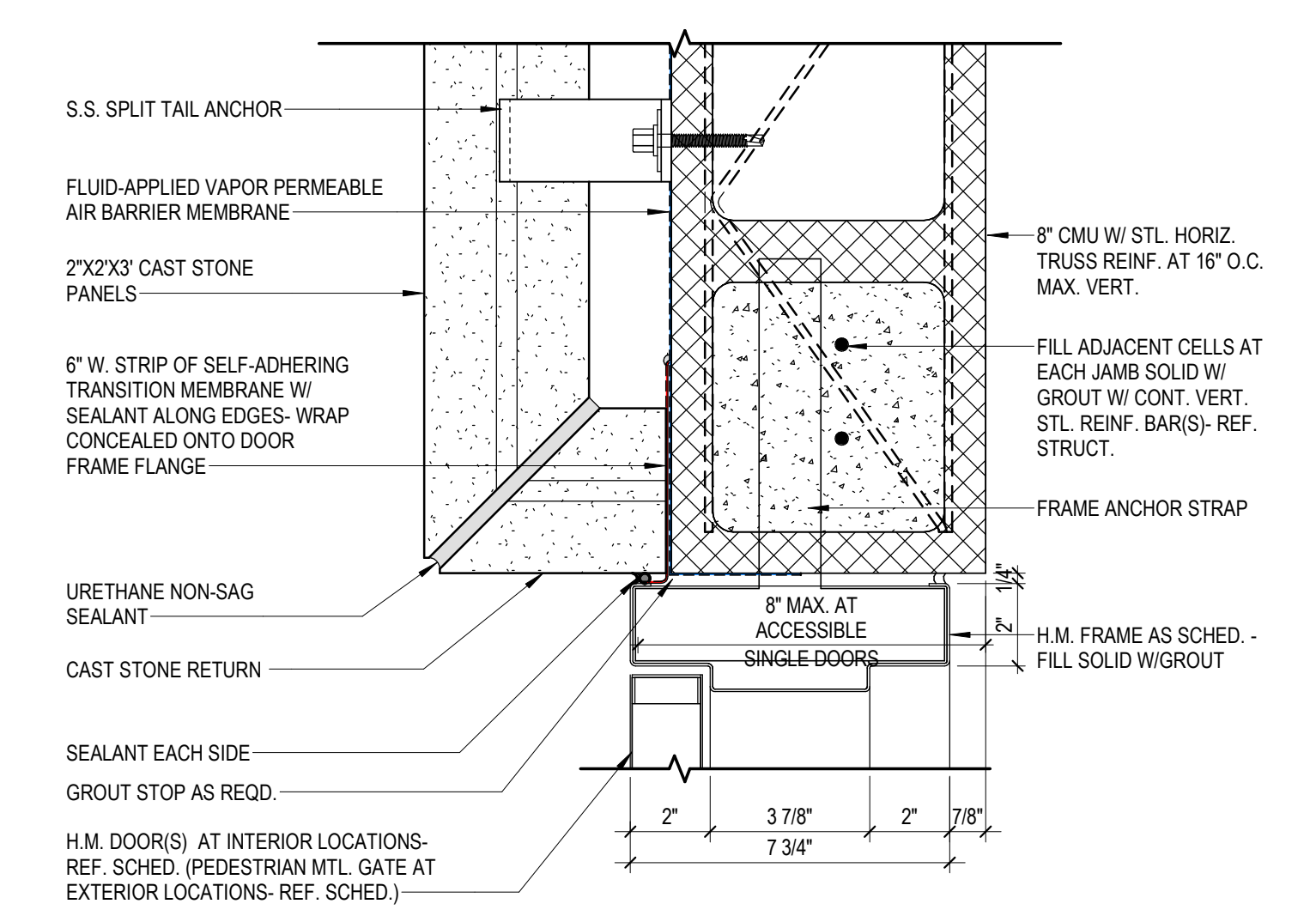
H.M. DOOR JAMB DETAIL AT CMU 3" = 1'-0" (7)



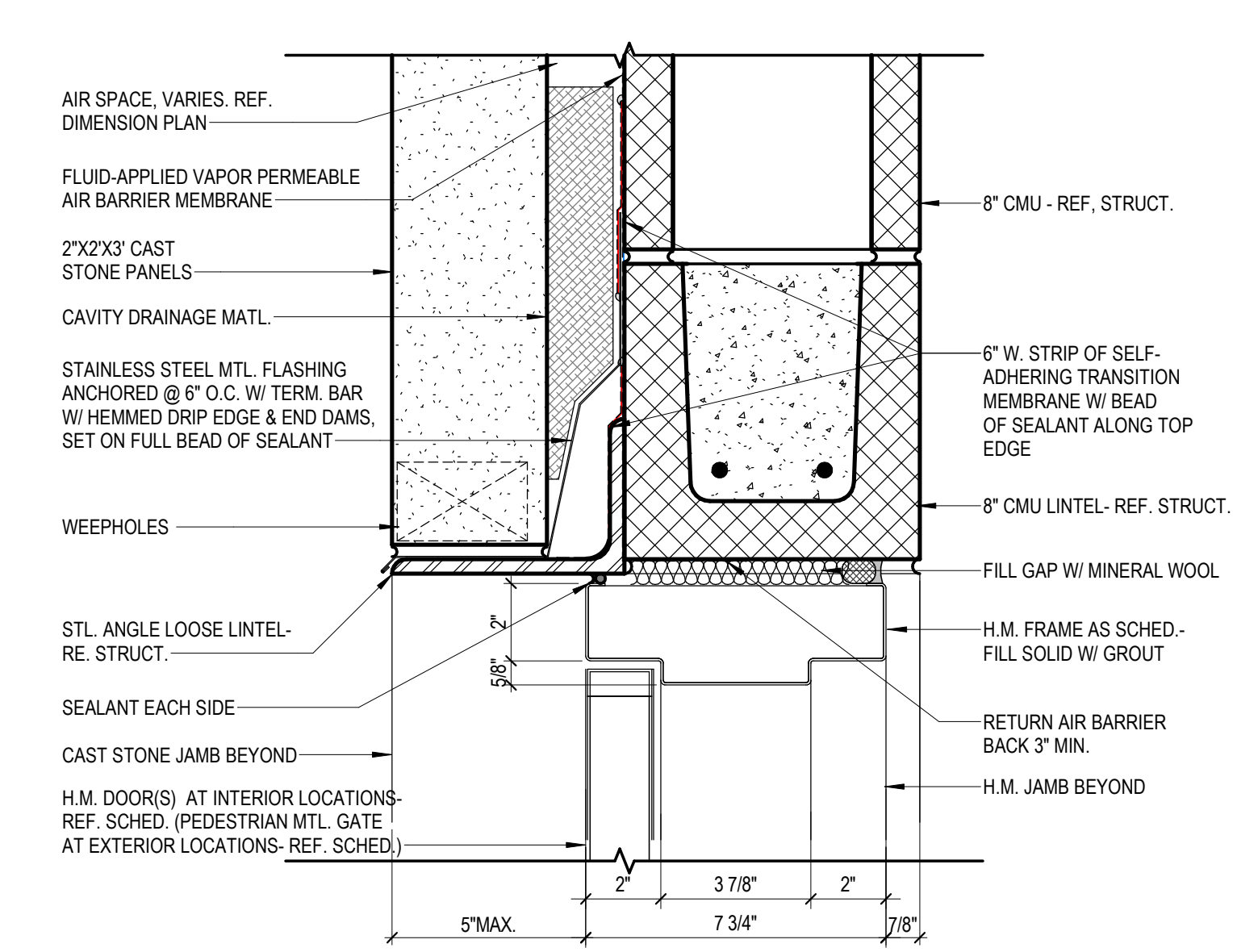
H.M. DOOR JAMB DETAIL AT BURNISHED CMU VENEER & 8" CMU 3" = 1'-0" (9)



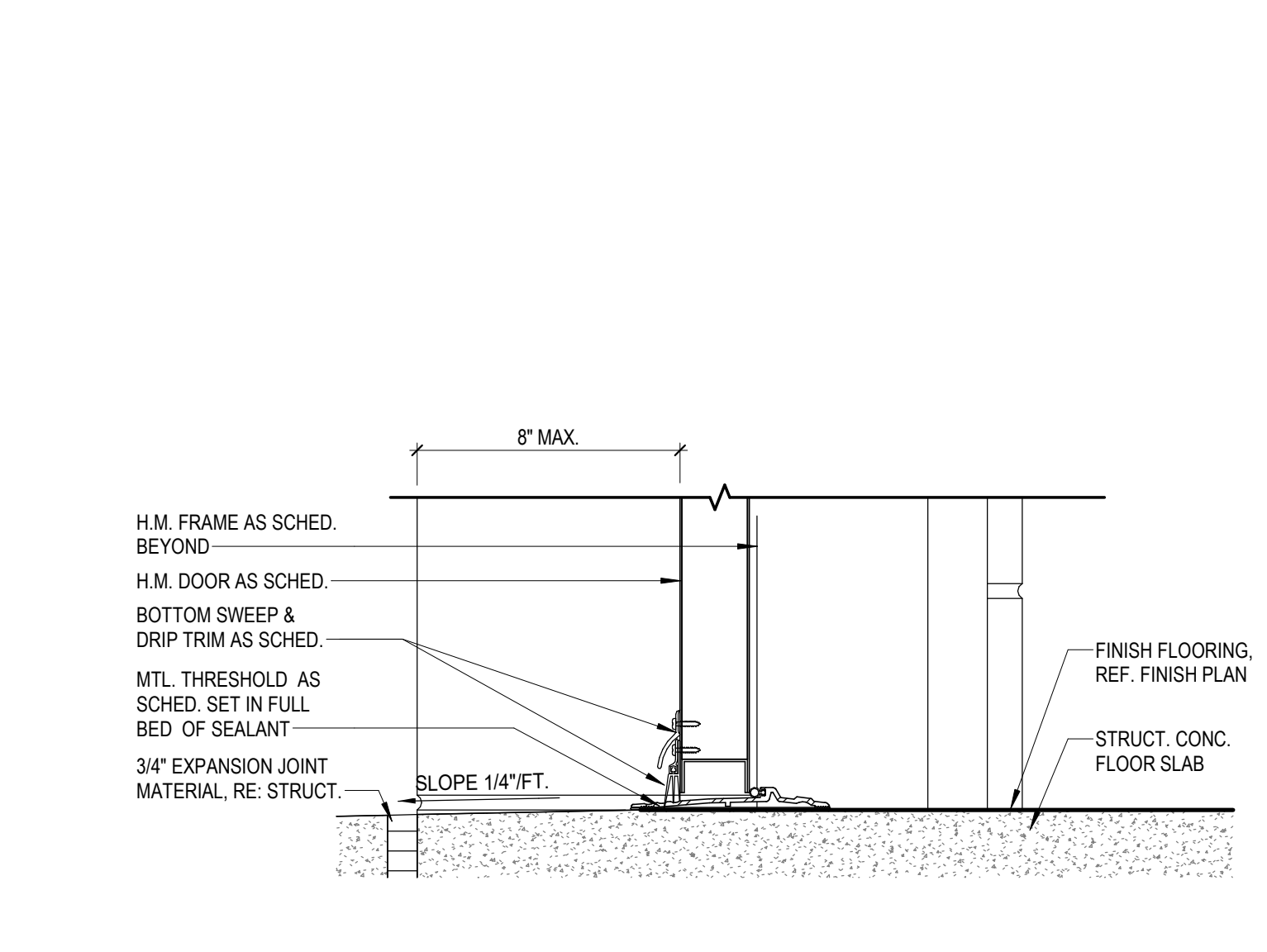
H.M. DOOR HEAD DETAIL AT CMU 3" = 1'-0" (6)



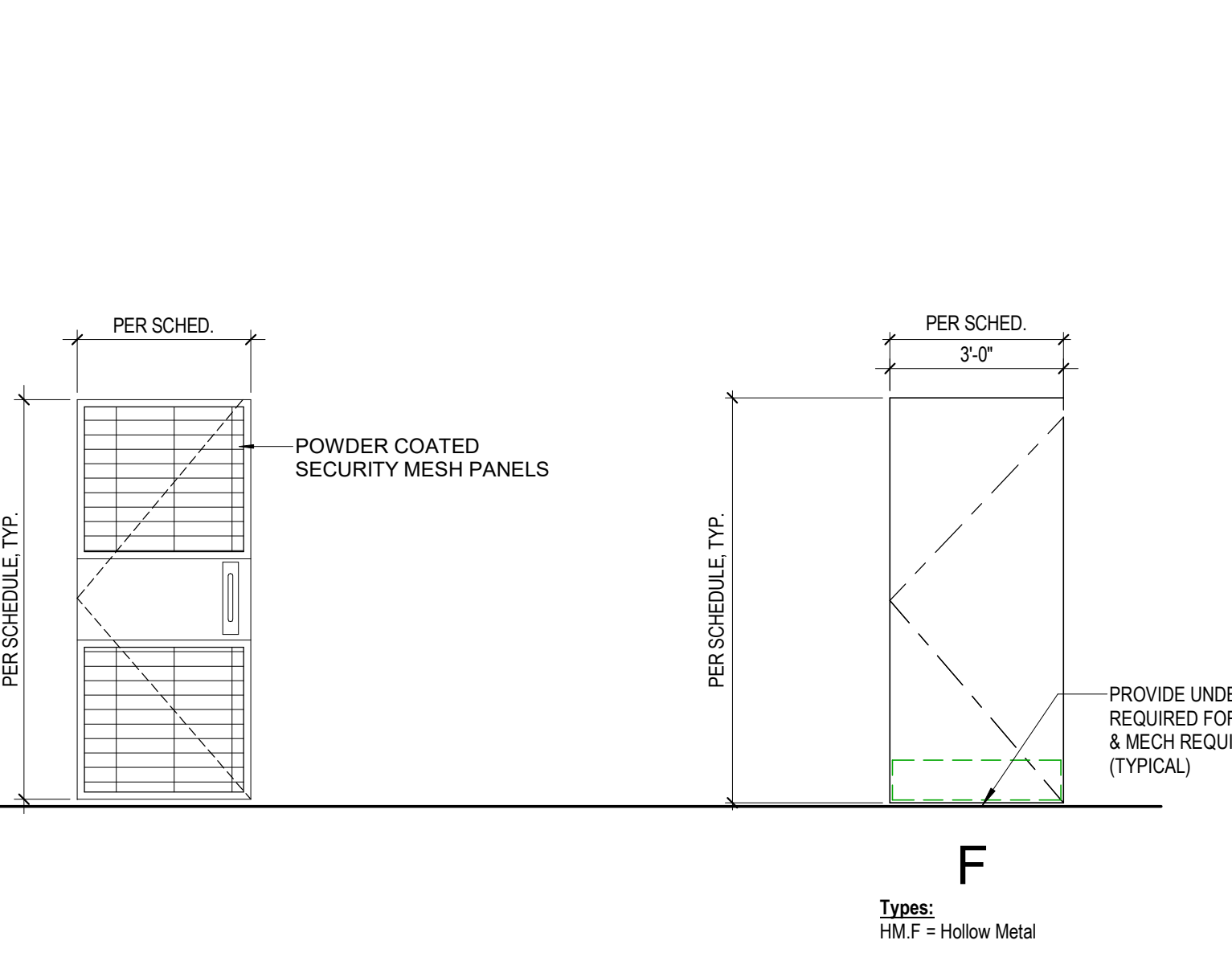
H.M. DOOR JAMB DETAIL AT CAST STONE & 8" CMU 3" = 1'-0" (5)



DOOR HEAD DETAIL AT CAST STONE & CMU 3" = 1'-0" (4)



H.M. DOOR THRESHOLD DETAIL AT CAST STONE VENEER & CMU 3" = 1'-0" (3)



DOOR PANEL TYPES 3/8" = 1'-0" (2)

DOOR REMARKS	DOOR FIRE LABEL
<ol style="list-style-type: none"> WITH EGRESS DEVICE MAGNETIC DOOR HOLDER FIRE DOOR ELEVATOR MACHINE ROOM DOORS ELECTRICAL ROOM DOORS KICK PLATE ON BOTH SIDES ACCESS PANEL DOOR WITH CLOSER 	<p>A LABEL 90 MINUTES</p> <p>B LABEL 60 MINUTES</p> <p>C LABEL 45 MINUTES</p> <p>20 MIN 20 MINUTES</p> <p>NOTE:</p> <p>1. ALL FIRE RATED DOOR ASSEMBLIES SHALL MEET THE REQUIREMENTS FOR A SMOKE AND DRAFT CONTROL ASSEMBLY TESTED IN ACCORDANCE WITH UL 1784 WITH AN ARTIFICIAL BOTTOM SEAL INSTALLED ACROSS THE FULL WIDTH OF THE BOTTOM OF THE DOOR ASSEMBLY.</p> <p>2. THE AIR LEAKAGE RATE OF THE DOOR ASSEMBLY SHALL NOT EXCEED 0.1 CFM PER SQUARE FOOT OF DOOR OPENING AT 10 INCH OF WATER FOR BOTH THE AMBIENT TEMPERATURE AND ELEVATED TEMPERATURE TESTS. IBC 716.3.3</p>

DOOR PANEL LEGEND	DOOR TAG LEGEND
<p>SINGLE DOOR</p> <p>DOUBLE DOORS</p> <p>Panel A</p> <p>Panel B</p> <p>Panel C</p> <p>Panel D</p> <p>PANEL "A" WILL ALWAYS BE FROM LEFT HINGE SWINGING OUTWARD.</p>	<p>DOOR TAG LEGEND</p> <p>###XY</p> <p>SIDELITE TYPE DIM, if applicable</p> <p>TRANSOM TYPE DIM, if applicable</p> <p>FRAME PROFILE TYPE</p> <p>NUMBER OF LITES</p> <p>TRANSOMS EXIST</p>

DOOR GLAZING	DOOR LEGEND
<p>INTERIOR DOORS: NON-RATED - 1/4" CLEAR TEMPERED GLASS</p> <p>REGARDING DOORS AND DOOR HARDWARE</p> <p>INTERIOR DOORS: RATED - TGP FIRELITE PLUS (STANDARD GRADE) 5/16" LAMINATED 20-180 MINUTES (GLASS TO MATCH DOOR RATING)</p> <p>EXTERIOR DOORS: HOLLOW METAL - 7/16" LAMINATED GLASS CLEAR (2 PLYS HEAT STRENGTHENED FLOAT GLASS)</p> <p>EXTERIOR DOORS: STOREFRONT - MATCH WINDOW GLAZING, LAMINATED GLASS</p>	<p>TRANSOM:</p> <p>0 - NO TRANSOM</p> <p>1 - TRANSOM</p> <p>SIDELITE:</p> <p>0 - NO SIDELITE</p> <p>1 - 1 SIDELITE</p> <p>2 - 2 SIDELITES, 1 EACH SIDE OR BOTH</p> <p>FRAME PROFILE TYPES:</p> <p>1 - 2" JAMB/HEAD WRAPS WALL</p> <p>2 - 2" JAMB/HEAD, MFR STANDARD</p> <p>3 - 2" JAMB, 4" HEAD, MASONRY</p> <p>4 - REFER TO FENESTRATION SCHEDULE</p> <p>5 - TRANSOM & SIDELITES BOTH SIDES</p> <p>6 - SIDELITE ON EITHER SIDE</p> <p>7 - ---</p> <p>8 - ---</p> <p>E - EGRESS FRAME</p> <p>H - OVERHEAD FRAME</p> <p>M - 4" JAMB/HEAD, MASONRY</p> <p>P - POCKET FRAME</p> <p>S - SLIDING FRAME</p> <p>T - TRACK FRAME</p>

FLOOR PLAN LEGEND	DOOR MATERIAL LEGEND
<ol style="list-style-type: none"> SEE PROJECT SPECIFICATIONS FOR ADDITIONAL INFORMATION REGARDING DOORS AND DOOR HARDWARE CONTRACTOR SHALL NOTIFY THE ARCHITECT OF ANY DISCREPANCY, INACCURACY OR CONFLICTING INFORMATION IN WRITING BEFORE EXECUTION OF WORK ALL EXTERIOR DOORS LISTED DESIGN PRESSURES SHALL MEET OR EXCEED REQUIRED DESIGN PRESSURES SHOWN IN THE DRAWINGS. SEE STRUCTURAL DRAWINGS FOR "ALLOWABLE" DESIGN WIND PRESSURES FOR OPENINGS. SEE FLOOR PLANS A2.01- A2.03 FOR PARTITION TAGS. SEE SHEET A0.10-13 FOR PARTITION TYPE SCHEDULE. DOOR SUPPLIER TO COORDINATE HM METAL FRAME THROAT DIMENSION FOR THE DOOR AND FRAME SUBMITTAL. ALL EXTERIOR HM DOORS AND FRAMES SHALL BE GALVANIZED, G60 COATING MINIMUM. ALL EXTERIOR HM DOORS SHALL HAVE A CLOSED CHANNEL TOP ALL METAL DOORS SHALL BE SEAMLESS EDGE SEAMS WELDED AND GROUND SMOOTH WITH TOP AND BOTTOM CLOSURE CAPS. ALL OPERABLE DOOR HANDLES SHALL BE LEVER TYPE EXTERIOR DOOR OPENING FORCE SHALL NOT EXCEED 8.5 LBS. INTERIOR DOOR OPENING FORCE SHALL NOT EXCEED 3.0 LBS. ALL FIRE RATED DOORS SHALL BE SELF CLOSING AND LATCHING. THRESHOLD AT DOORWAYS SHALL NOT EXCEED 1/2 INCH WITH A 1/4" BEVEL IN ACCORDANCE WITH CURRENT TAS-ACCESSIBILITY SECTION 303.3 FOR ADA COMPLIANCE. SEE MECHANICAL DRAWINGS FOR DOOR LOUVERS AND / OR ADDITIONAL UNDERCUTS WHEN REQUIRED. EXTERIOR DOOR FRAMES WITHIN CMU WALLS SHALL HAVE FOAM INSULATION INTERIOR DOOR FRAMES WITHIN CMU WALLS AND/OR FRAMED PARTITIONS WITH BATT INSULATION SHALL BE PACKED WITH MINERAL WOOL INSULATION 	<p>AL - ALUMINUM</p> <p>CAL - CLEAR ANODIZED ALUMINUM</p> <p>FBG - FIBER GLASS</p> <p>G - GALVANIZED</p> <p>GL - GLASS</p> <p>HC - WOOD, HOLLOW CORE</p> <p>HFG - HEAVY DUTY FENCE / GATE</p> <p>HG - HOLLOW METAL GALV</p> <p>HM - HOLLOW METAL</p> <p>HS - HM 24 GA. STEEL</p> <p>PF - PREFINISHED</p> <p>PL - PLASTIC LAMINATE</p> <p>PT - PAINTED</p> <p>PVDF - 70% RESIN COATING</p> <p>SS - STAINLESS STEEL</p> <p>VL - VINYL</p> <p>WD - WOOD, SOLID CORE</p>

DOOR PANEL LEGEND	PROJECT LEGEND
<p>DOOR PANEL LEGEND</p> <p>DOOR PANEL TYPE NOTE</p> <p>BF - BI-FOLD / LOUVERED PANELS</p> <p>F - FLUSH PANEL, SINGLE</p> <p>NV - DOOR WITH NARROW VISION PANEL</p> <p>FG - FULL GLASS PANEL, SINGLE</p> <p>FL - FULL LOUVER PANEL</p> <p>YG - CHAIN LINK GATE</p>	<p>PROJECT LEGEND</p> <ol style="list-style-type: none"> ROOM AND DOOR REFERENCE NUMBERS ARE FOR DESIGN AND CONSTRUCTION COORDINATION PURPOSES ONLY CONTRACTOR SHALL COORDINATE WITH OWNER FOR FINAL ROOM & DOOR IDENTIFICATION FOR CLOSEOUT DOCUMENTATION. CONTRACTOR SHALL FIELD VERIFY ALL DOOR SIZES & HARDWARE WITH OPENING PRIOR TO DOOR SUBMITTAL AND INSTALLATION. ALL DISCREPANCIES SHALL BE BROUGHT TO THE ATTENTION OF THE ARCHITECT IMMEDIATELY. EXTERIOR ALUMINUM STOREFRONT WINDOW AND DOOR SYSTEMS SHALL HAVE A CLEAR ANODIZED FINISH (CLASS 1 COATING) UNLESS OTHERWISE NOTED TO RECEIVE P.V.O.F. (RESIN COATING) WITH SPECIFIED COLOR. SEE WINDOW SCHEDULE AND BUILDING ELEVATIONS FOR ADDITIONAL INFORMATION. INTERIOR ALUMINUM STOREFRONT WINDOW AND DOOR SYSTEMS SHALL HAVE A CLEAR ANODIZED FINISH. DOORS WITH ELECTRIC STRIKES TO RECEIVE GROUT GUARDS WHEN FRAMES ARE GROUT FILLED OR RECEIVE FOAM INSULATION. PROVIDE "NO STORAGE PERMITTED" SIGNAGE AT ALL ELECTRICAL AND LOW VOLTAGE EQUIPMENT ROOMS (I.T. / IDF / MDF / RADIO EQUIP.) DOORS WITH ADA OPERATORS SHALL HAVE SAID DEVICES ON BOTH THE PUSH AND PULL SIDES OF THE DOOR. SEE FINISH SCHEDULE AND BUILDING ELEVATIONS FOR ADDITIONAL INFORMATION REGARDING FINISHES / COLORS.

DOOR FRAME TYPES
<p>DOOR FRAME TYPES 3/8" = 1'-0" (1)</p> <p>MANUFACTURER STANDARD HM FRAME, MASONRY</p>

COLLIN COUNTY

2320 BLOOMDALE ROAD, SUITE 3100

T (972)547-5340

ARCHITECT

PGAL

PGAL, Inc.
14135 Midway Rd.
Suite G-200
Addicks, TX 75001
T (214) 647-6441
www.pgal.com

CONSULTANT

REGISTRATION
Copyright © 2023

DRAWING HISTORY		
NO.	DATE	DESCRIPTION
10	10/16/2023	ISSUE FOR PERMIT
11	01/22/2024	ISSUE FOR BID
1	08/05/2025	RFI 255

PROJECT NAME
COLLIN COUNTY HEALTHCARE, PARKING GARAGE, & MEDICAL EXAM. FACILITIES

PROJECT LOCATION
2320 Bloomdale Rd.
McKinney, TX 75071

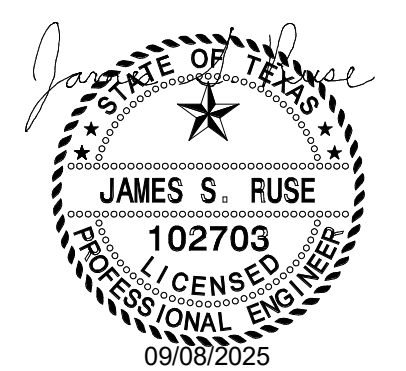
PROJECT NUMBER
1006549.00

SHEET TITLE
DOOR SCHEDULE & ASSEMBLY TYPES

VOLUME 4
PARKING GARAGE
SHEET NUMBER

PG-A0.30

FILE NAME: Architect_Docs\COLLIN COUNTY HC, PG, & ME FACILITIES\A-PARKING GARAGE.rvt
DATE STAMP: 9/10/2025 5:35:31 PM

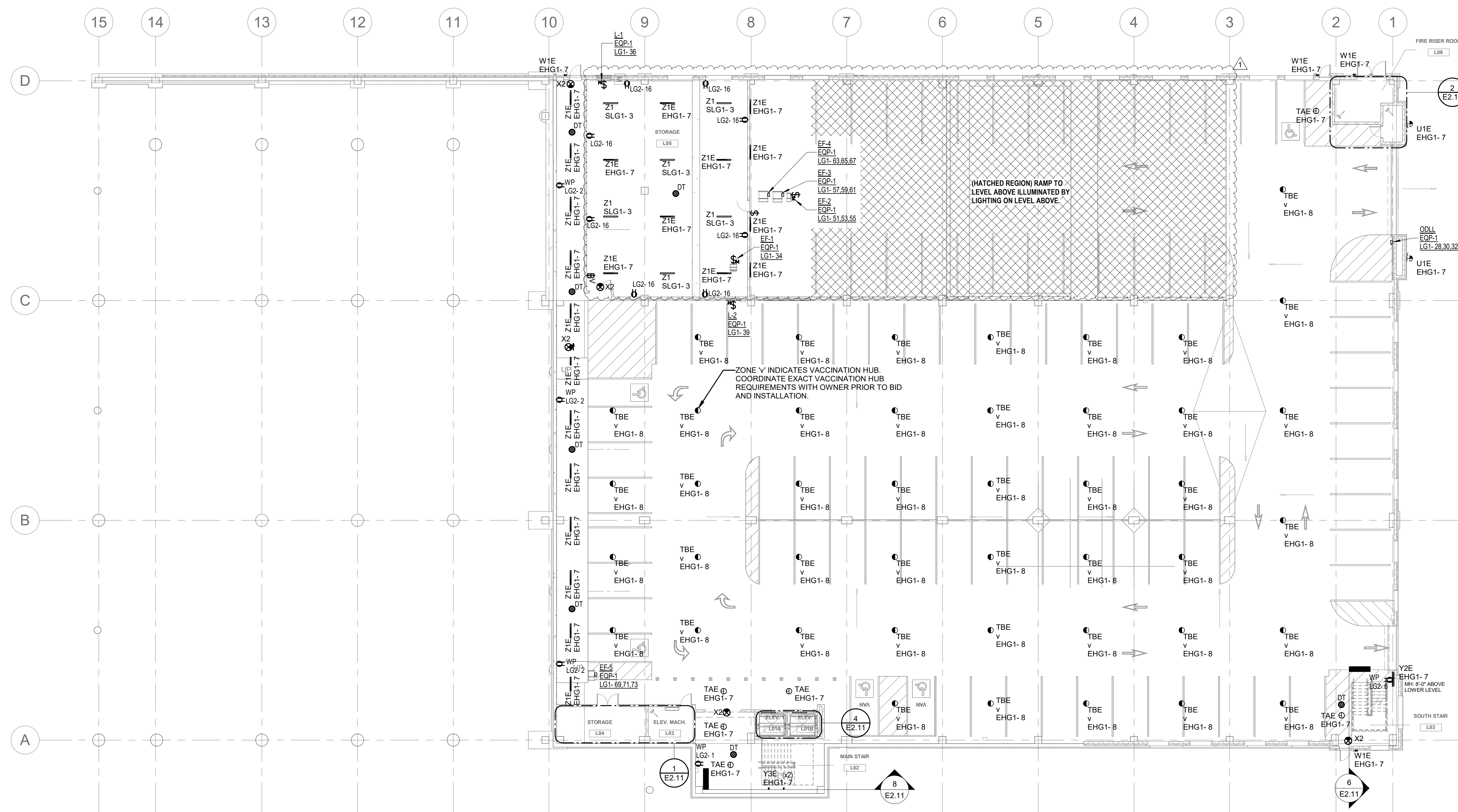


No.	DATE	DESCRIPTION
1	10/16/2023	ISSUE FOR PERMIT
2	01/22/2024	ISSUE FOR BID
3	10/08/2025	RFP 255

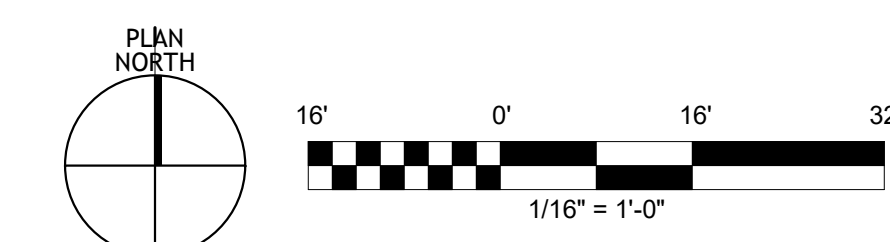
REFER TO SHEET SD-E2.00 FOR
LIGHTING SCHEDULES, DETAILS,
AND CONTROL NARRATIVE.
REFER TO TECHNOLOGY AND
SECURITY DRAWINGS FOR
ADDITIONAL INFORMATION

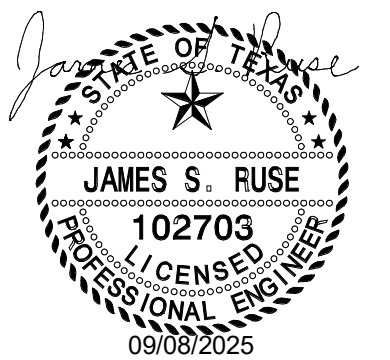
POWER FLOOR PLAN POWER NOTES

- REFER TO SHEET SD-E0.10 FOR ELECTRICAL GENERAL NOTES AND LEGEND.
- COORDINATE ALL ELECTRICAL REQUIREMENTS OF EQUIPMENT REQUIRING POWER WITH EQUIPMENT MANUFACTURER. NOTIFY OWNER AND ELECTRICAL ENGINEER IF POWER REQUIREMENTS DEVIATE FROM WHAT IS SHOWN IN CONTRACT DOCUMENTS.
- CONTRACTOR TO COORDINATE MATERIAL COLOR AND FINISH OF ALL EXPOSED ELECTRICAL ITEMS WITH ARCHITECT.
- CONTRACTOR TO COORDINATE EXACT LOCATION OF FLOOR BOXES WITH ARCHITECT PRIOR TO ROUGH-IN. REFER TO TECHNOLOGY DRAWINGS FOR ADDITIONAL FLOOR BOX ROUGH-IN REQUIREMENTS.
- CONTRACTOR TO COORDINATE THE EXACT MOUNTING HEIGHT AND ORIENTATION (VERTICAL/HORIZONTAL) FOR ALL ABOVE COUNTER RECEPTACLES WITH ARCHITECT PRIOR TO ROUGH-IN.
- CONTRACTOR TO COORDINATE RECEPTACLE LOCATION AND POWER CONDUIT ROUTING WITH TECHNOLOGY DRAWINGS. CONTRACTOR TO COORDINATE ALL ROUGH-IN REQUIREMENTS BETWEEN TRADES PRIOR TO ROUGH-IN. POWER AND DATA RECEPTACLES SHALL BE LOCATED WITHIN SAME STUD-BAY OR ADJACENT STUD-BAYS WHERE POSSIBLE. SUBMIT RFI ASKING FOR CLARIFICATION IF THERE IS A DATA DROP WITHOUT AN ADJACENT RECEPTACLE.
- ELECTRICAL CONTRACTOR SHALL FOLLOW THE FOLLOWING INSTRUCTIONS AS IT PERTAINS TO INSTALLATION OF RACEWAY WITHIN THE PARKING GARAGE. COORDINATE ALL REQUIREMENTS PRIOR TO ROUGH-IN.
 - FOR LIGHTING - ALL CONDUIT IN THE PARKING GARAGE SHALL BE ROUTED EXPOSED. IT SHALL BE ROUTED THROUGH STRUCTURAL STEEL VIA LEAVEOUTS PROVIDED BY THE STRUCTURAL ENGINEER FOR CONDUITS TO PASS THROUGH. THE CONTRACTOR SHALL MINIMIZE THE AMOUNT OF CONDUIT ROUTED AT AN ELEVATION BELOW THE FLOORGRADE BEAMS.
 - FOR DATA/SECURITY - REFER TO LIGHTS INSTRUCTIONS ABOVE. COORDINATE ROUTING OF CONDUIT WITH DATA/SECURITY PACKAGES AND ARCHITECT.
 - FOR POWER:
 - RECEPTACLES - ROUTE CONCEALED WITHIN CONCRETE TO POWER RECEPTACLES THAT ARE RECESSED WITHIN THE WALL.
 - MOTORS/LARGE EQUIPMENT - REFER TO LIGHTING ABOVE. DISCONNECT SWITCHES SHALL BE LOCKABLE AND SHALL NOT BE READILY ACCESSIBLE TO THE PUBLIC.
 - EV CHARGERS - PROVIDE SHOP DRAWINGS FOR ENGINEER REVIEW AND OWNER APPROVAL.



FLOOR PLAN - LOWER LEVEL - ELECTRICAL 1/16" = 1'-0" 1



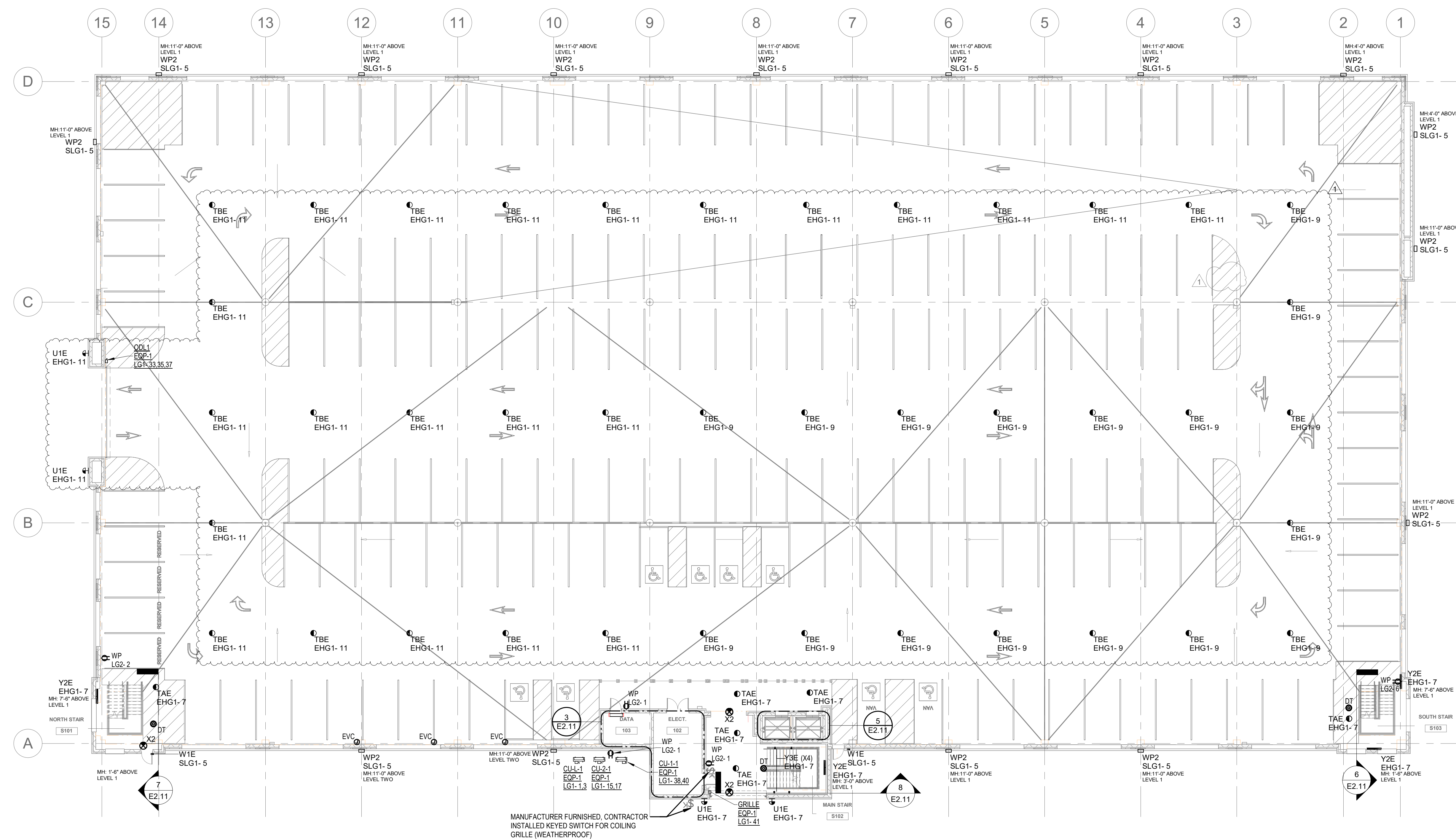


No.	DATE	DESCRIPTION
1	10/16/2023	ISSUE FOR PERMIT
1	01/22/2024	ISSUE FOR BID
1	08/08/2025	RFI 255

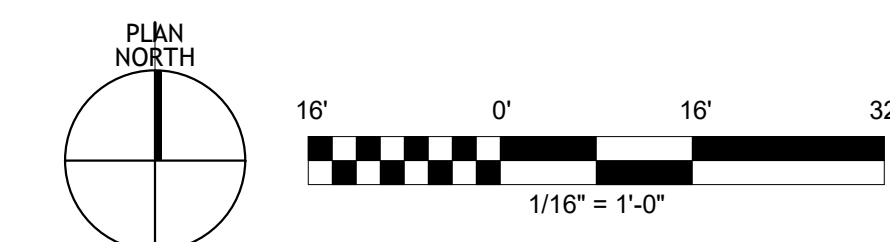
REFER TO SHEET SD-E2.00 FOR
LIGHTING SCHEDULES, DETAILS,
AND CONTROL NARRATIVE.
REFER TO TECHNOLOGY AND
SECURITY DRAWINGS FOR
ADDITIONAL INFORMATION

POWER FLOOR PLAN POWER NOTES

- REFER TO SHEET SD-E0.10 FOR ELECTRICAL GENERAL NOTES AND LEGEND.
- COORDINATE ALL ELECTRICAL REQUIREMENTS OF EQUIPMENT REQUIRING POWER WITH EQUIPMENT MANUFACTURER. NOTIFY OWNER AND ELECTRICAL ENGINEER IF POWER REQUIREMENTS DEVIATE FROM WHAT IS SHOWN IN CONTRACT DOCUMENTS.
- CONTRACTOR TO COORDINATE MATERIAL COLOR AND FINISH OF ALL EXPOSED ELECTRICAL ITEMS WITH ARCHITECT.
- CONTRACTOR TO COORDINATE EXACT LOCATION OF FLOOR BOXES WITH ARCHITECT PRIOR TO ROUGH-IN. REFER TO TECHNOLOGY DRAWINGS FOR ADDITIONAL FLOOR BOX ROUGH-IN REQUIREMENTS.
- CONTRACTOR TO COORDINATE THE EXACT MOUNTING HEIGHT AND ORIENTATION (VERTICAL/HORIZONTAL) FOR ALL ABOVE COUNTER RECEPTACLES WITH ARCHITECT PRIOR TO ROUGH-IN.
- CONTRACTOR TO COORDINATE RECEPTACLE LOCATION AND POWER CONDUIT ROUTING WITH TECHNOLOGY DRAWINGS. CONTRACTOR TO COORDINATE ALL ROUGH-IN REQUIREMENTS BETWEEN TRADES PRIOR TO ROUGH-IN. POWER AND DATA RECEPTACLES SHALL BE LOCATED WITHIN SAME STUD-BAY OR ADJACENT STUD-BAYS WHERE POSSIBLE. SUBMIT RFI ASKING FOR CLARIFICATION IF THERE IS A DATA DROP WITHOUT AN ADJACENT RECEPTACLE.
- ELECTRICAL CONTRACTOR SHALL FOLLOW THE FOLLOWING INSTRUCTIONS AS IT PERTAINS TO INSTALLATION OF RACEWAY WITHIN THE PARKING GARAGE. COORDINATE ALL REQUIREMENTS PRIOR TO ROUGH-IN.
 - FOR LIGHTING - ALL CONDUIT IN THE PARKING GARAGE SHALL BE ROUTED EXPOSED. IT SHALL BE ROUTED THROUGH STRUCTURAL STEEL VIA LEAVEOUTS PROVIDED BY THE STRUCTURAL ENGINEER FOR CONDUITS TO PASS THROUGH. THE CONTRACTOR SHALL MINIMIZE THE AMOUNT OF CONDUIT ROUTED AT AN ELEVATION BELOW THE FLOORGRADE BEAMS.
 - FOR DATA/SECURITY - REFER TO LIGHTS INSTRUCTIONS ABOVE. COORDINATE ROUTING OF CONDUIT WITH DATA/SECURITY PACKAGES AND ARCHITECT.
 - FOR POWER:
 - RECEPTACLES - ROUTE CONCEALED WITHIN CONCRETE TO POWER RECEPTACLES THAT ARE RECESSED WITHIN THE WALL.
 - MOTORS/LARGE EQUIPMENT - REFER TO LIGHTING ABOVE. DISCONNECT SWITCHES SHALL BE LOCKABLE AND SHALL NOT BE READILY ACCESSIBLE TO THE PUBLIC.
 - EV CHARGERS - PROVIDE SHOP DRAWINGS FOR ENGINEER REVIEW AND OWNER APPROVAL.



FLOOR PLAN - LEVEL 1 - ELECTRICAL 1/16" = 1'-0" 1



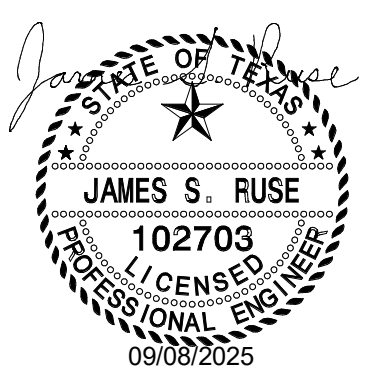


Table with 3 columns: No., DATE, DESCRIPTION. Includes revision history for permit and bid.

COLLIN COUNTY HEALTHCARE, PARKING GARAGE, & MEDICAL EXAM. FACILITIES

2320 Bloomdale Rd McKinney, TX 75071

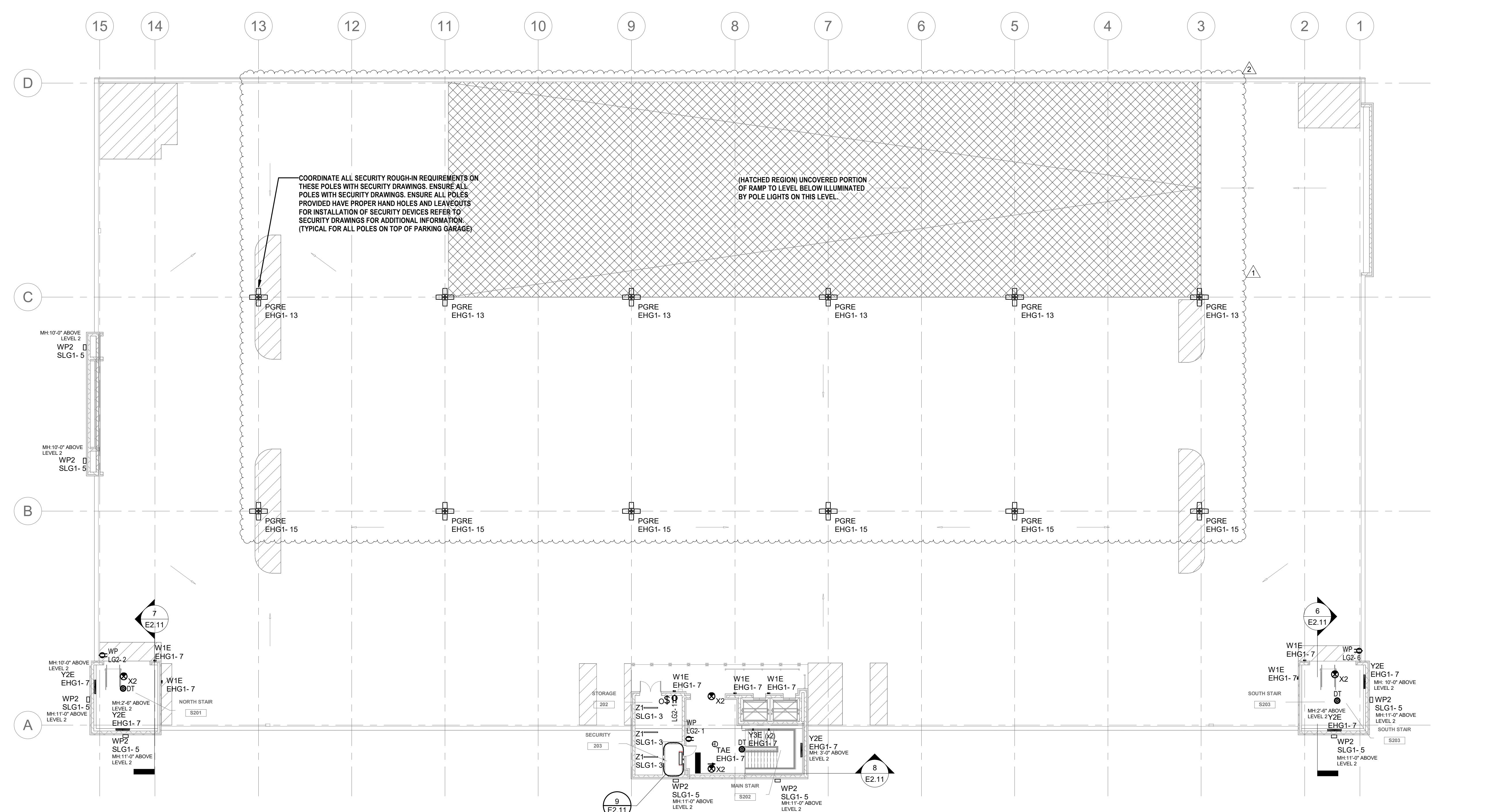
1006549.00

FLOOR PLAN - LEVEL 2 - ELECTRICAL

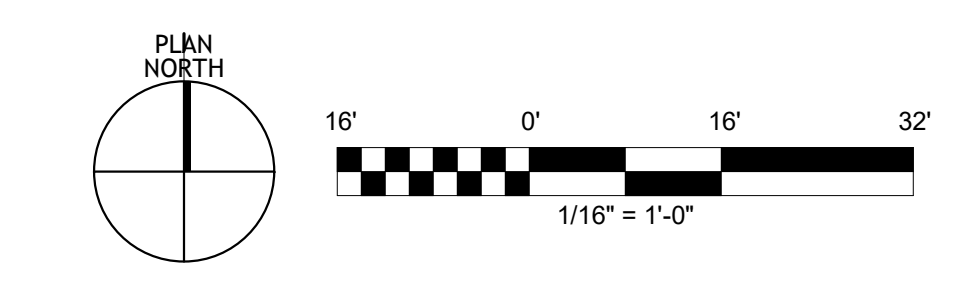
REFER TO SHEET SD-E2.00 FOR LIGHTING SCHEDULES, DETAILS, AND CONTROL NARRATIVE. REFER TO TECHNOLOGY AND SECURITY DRAWINGS FOR ADDITIONAL INFORMATION

POWER FLOOR PLAN POWER NOTES

- 1. REFER TO SHEET SD-E0.10 FOR ELECTRICAL GENERAL NOTES AND LEGEND. 2. COORDINATE ALL ELECTRICAL REQUIREMENTS OF EQUIPMENT REQUIRING POWER WITH EQUIPMENT MANUFACTURER... 7. ELECTRICAL CONTRACTOR SHALL FOLLOW THE FOLLOWING INSTRUCTIONS AS IT PERTAINS TO INSTALLATION OF RACEMAY WITHIN THE PARKING GARAGE...



FLOOR PLAN - LEVEL 2 - ELECTRICAL 1/16" = 1'-0" 1



1

Branch Panel: LG1												
Mounting: SURFACE			Volts: 120/208 Wye			A.I.C. Rating: 15,000 AIC						
Supply From: TG1			Phases: 3			Mains Type: MCB						
Enclosure: Type 1			Wires: 4			Mains Rating: 400 A						
CK T	Circuit Description	BKR (A)	Loa d (A)	A(VA)	B(VA)	C(VA)	Loa d (A)	BKR (A)	Circuit Description	CK T		
1	CUL-1	20	2	13	1365	3420						
5	ELEVATOR 02 CAB PWR	20	1	2	1365	3420						
7	JOCKEY PUMP	20	1	24	2827	180						
9	ELEVATOR SUMP PUMP	30	1	10	1176	2083						
11	GENERATOR SHOREPOWER	125	2	50			5200	2083	17	3	20	
13												
15	CU-2-1	20	2	13	1365	180						
17							1365	180	2	1	20	
19	SUB-METERING EQ	20	1	2	180	1320						
21												
23	FFROT AIR COMP	20	3	11			1320	1320	11	3	20	
25												
27	FFROT AIR COMP	20	3	11	1320	1920						
29	FFROT AIR COMP	20	3	11			1320	232	2	3	20	
31					1320	232						
35	L1 OVERHEAD DOOR	20	3	2			232	180	2	1	20	
37												
39	LOUVER L-2	20	1	2	232	1365						
41	COILING GRILLE	20	1	2	180	1365						
43	TWO-WAY EM COMM	20	1	2	180	2083						
45	TWO-WAY EM COMM	20	1	2	200	2083						
47	EUH-L-3 DOMESTIC WATER	20	2	18			1875	0	--	2	60	
49					1875	0						
51							420	0	--	2	60	
53	EF-2	20	3	4			420	0	--	2	60	
55					420	0						
57												
59	EF-3	35	3	17			2006	0	--	2	60	
61												
63					2006	0						
65	EF-4	35	3	17			2006	0	--	2	60	
67					2006	0						
69							2006	0	--	2	60	
71	EF-5	35	3	17			2006	--	--	1	--	
73												
75	VAULT HEATER	20	1	--		1000	--	--	--	1	--	
77	SPARE	20	1	--			0	--	--	1	--	
79	SPARE	20	1	--	0	--		--	--	1	--	
81	SPARE	20	1	--		0	--	--	--	1	--	
83	SPARE	20	1	--			0	--	--	1	--	
Total Load:					34 kVA	25 kVA	26 kVA					
Total Amps:					280 A	212 A	216 A					
Load Classification												
		Connected Load	Demand Factor	Estimated Demand	Panel Totals							
Cooling		8187 VA	100.00%	8187 VA								
Heating		10000 VA	100.00%	10000 VA								
Motor		39047 VA	100.00%	39047 VA								
Power		17590 VA	100.00%	17590 VA								
Receptacle		9000 VA	100.00%	9000 VA								
Spare		1000 VA	100.00%	1000 VA								
					Total Conn. Load: 85 kVA		Total Demand Load: 85 kVA		Total Demand Amps: 235 A			
Schedule Notes:												
ALL CIRCUIT BREAKERS RATED OVER 125 AMPS SHALL BE A SUB-MAIN CIRCUIT BREAKER												

Branch Panel: LG2												
Mounting: SURFACE			Volts: 120/208 Wye			A.I.C. Rating: 10,000 AIC						
Supply From: LG1			Phases: 3			Mains Type: MCB						
Enclosure: Type 1			Wires: 4			Mains Rating: 225 A						
CK T	Circuit Description	BKR (A)	Loa d (A)	A(VA)	B(VA)	C(VA)	Loa d (A)	BKR (A)	Circuit Description	CK T		
1	ELEC 102 RECEPTACLES	20	1	15	1800	900						
3	ELEVATOR PIT RECEPTACLES	20	1	3	360	540						
5	SECURITY QUAD	20	1	3			360	540	5	1	20	
7	SECURITY QUAD	20	1	2	180	180						
9	IDF QUAD	20	1	3	360	360						
11	IDF RCPT	20	1	2			180	180	2	1	20	
13	IDF RACK	20	1	2	180	180						
15	IDF QUAD	20	1	3	360	1440						
17	IDF QUAD	20	1	3			360	0	--	1	20	
19	SPARE	20	1	--	0	0			--	1	20	
21	SPARE	20	1	--	0	0			--	1	20	
23	SPARE	20	1	--	0	0			--	1	20	
25	SPARE	20	1	--	0	0			--	1	20	
27	SPARE	20	1	--	0	0			--	1	20	
29	SPARE	20	1	--	0	0			--	1	20	
31	SPARE	20	1	--	0	--			--	1	--	
33	SPARE	20	1	--	0	--			--	1	--	
35	SPARE	20	1	--	0	--			--	1	--	
37	SPARE	20	1	--	0	--			--	1	--	
39	SPARE	20	1	--	0	--			--	1	--	
41	SPARE	20	1	--	0	--			--	1	--	
Total Load:					3 kVA	3 kVA	2 kVA					
Total Amps:					31 A	31 A	14 A					
Load Classification												
		Connected Load	Demand Factor	Estimated Demand	Panel Totals							
Receptacle		8460 VA	100.00%	8460 VA								
					Total Conn. Load: 8 kVA		Total Demand Load: 8 kVA		Total Demand Amps: 23 A			
Schedule Notes:												

Switchboard: MSB												
Mounting: PAD MOUNTED			Volts: 480/277 Wye			A.I.C. Rating: 65,000 AIC						
Supply From: T2			Phases: 3			Mains Type: MCB						
Enclosure: NEMA 1			Wires: 4			Mains Rating: 2000 A						
CKT	Circuit Description	POLES	TRIP (Amps)	Apparent Current	Load							
1	SPD	3	100	--	0 VA							
2	SLG1	3	225	11 A	8856 VA							
3	1TGT1	3	200	102 A	84824 VA							
4	EHC1	3	225	19 A	15389 VA							
5	DPM	3	800	--	0 VA							
6	DPC	3	1200	--	0 VA							
7	PREPARED SPACE	3	800	--	0 VA							
8	ELEVATOR 02	3	200	97 A	80642 VA							
9	ELEVATOR 01	3	200	97 A	80642 VA							
10	PREPARED SPACE	3	800	--	0 VA							
11	PREPARED SPACE	3	800	--	0 VA							
12	PREPARED SPACE	3	400	--	0 VA							
13	PREPARED SPACE	3	400	--	0 VA							
14	PREPARED SPACE	3	400	--	0 VA							
15	PREPARED SPACE	3	400	--	0 VA							
16	SPARE	3	400	--	0 VA							
Total Load:										270 kVA	325 A	
Load Classification												
		Connected Load	Demand Factor	Estimated Demand	Panel Totals							
Cooling		8187 VA	100.00%	8187 VA								
Elevator		161284 VA	95.90%	153220 VA								
Heating		10000 VA	100.00%	10000 VA								
Lighting		24245 VA	125.00%	30306 VA								
Motor		39047 VA	100.00%	39047 VA								
Power		17590 VA	100.00%	17590 VA								
Receptacle		9000 VA	100.00%	9000 VA								
Spare		1000 VA	100.00%	1000 VA								
Notes:												
REFER TO SHEET SD-ES.01 FOR LOAD SUMMARY INFORMATION.												
COORDINATE EXACT ELEVATOR REQUIREMENTS WITH ELEVATOR MANUFACTURER PRIOR TO RELEASE OF EQUIPMENT INTO PRODUCTION.												

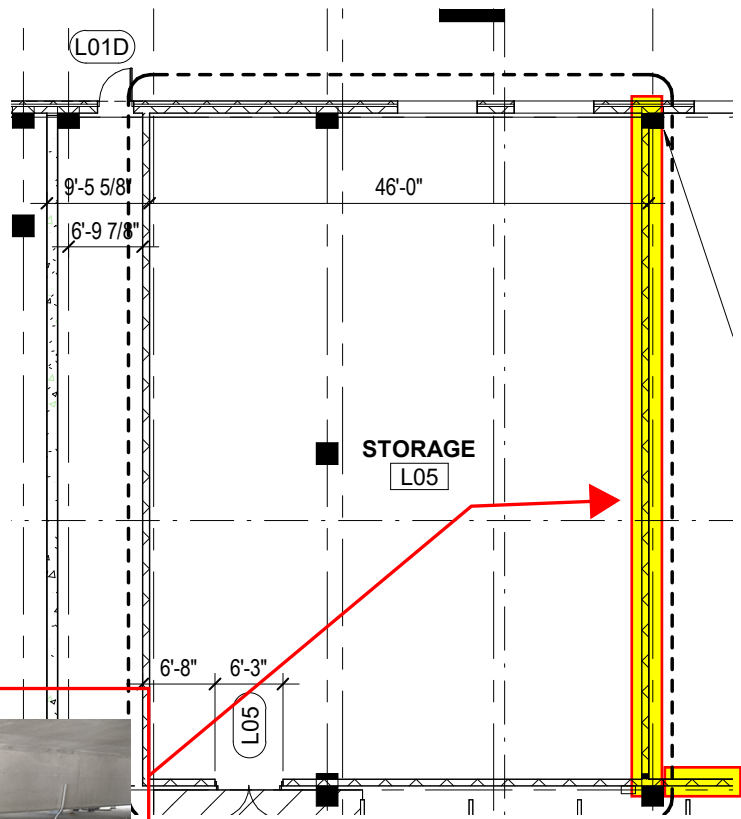
Branch Panel: SLG1												
Mounting: SURFACE			Volts: 480/277 Wye			A.I.C. Rating: 22,000 AIC						
Supply From: ATSE			Phases: 3			Mains Type: MLO						
Enclosure: Type 1			Wires: 4			Mains Rating: 225 A						
CK T	Circuit Description	BKR (A)	Loa d (A)	A(VA)	B(VA)	C(VA)	Loa d (A)	BKR (A)	Circuit Description	CK T		
1	ELEVATOR SHAFT LIGHTING	20	1	1	254	1341						
3	STORAGE/FIRE/ELECT	20	1	2			680	2082				
5	WALLPACKS - GARAGE LTG	20	1	9			2537	1962	7	1	20	
7	SPARE	20	1	--	0	0			--	1	20	
9	SPARE	20	1	--	0	0			--	1	20	
11	SPARE	20	1	--	0	0			--	1	20	
13	SPARE	20	1	--	0	0			--	1	20	
15	SPARE	20	1	--	0	0			--	1	20	
17	SPARE	20	1	--	0	0			--	1	20	
19	SPARE	20	1	--	0	0			--	1	20	
21	SPARE	20	1	--	0	0			--	1	20	
23	SPARE	20	1	--	0	0			--	1	20	
25	SPARE	20	1	--	0	--			--	1	--	
27	SPARE	20	1	--	0	--			--	1	--	
29	SPARE	20	1	--	0	--			--	1	--	
31	SPARE	20	1	--	0	--			--	1	--	
33	SPARE	20	1	--	0	--			--	1	--	
35	SPARE	20	1	--	0	--			--	1	--	
37	SPARE	20	1	--	0	--			--	1	--	
39	SPARE	20	1	--	0	--			--	1	--	
41	SPARE	20	1	--	0	--			--	1	--	
Total Load:					2 kVA	3 kVA	4 kVA					
Total Amps:					6 A	11 A	17 A					
Load Classification												
		Connected Load	Demand Factor	Estimated Demand	Panel Totals							
Lighting		8886 VA	125.00%	11070 VA								
					Total Conn. Load: 9 kVA		Total Demand Load: 11 kVA		Total Demand Amps: 13 A			
Schedule Notes:												

Branch Panel: EHG1												
Mounting: SURFACE			Volts: 480/277 Wye			A.I.C. Rating: 22,000 AIC						
Supply From: MSB			Phases: 3			Mains Type: MCB						
Enclosure: Type 1			Wires: 4			Mains Rating: 225 A						
CK T	Circuit Description	BKR (A)	Loa d (A)	A	B	C	Loa d (A)	BKR (A)	Circuit Description	CK T		
1												
3	EHC1	150	3	--	0	0						
5												
7	EM LTG - BASEMENT/STAIRS	20	1	9	2577	3614						
9	EM LTG - LEVEL 2	20	1	5		1396	--					
11	EM LTG - LEVEL 2	20	1	7			1945	--				
13	EM LTG - LEVEL 3	20	1	11	2928	--						
15	EM LTG - LEVEL 3	20	1	11		2928	--					
17	SPARE	20	1	--	0	--			--	1	--	
19	SPARE	20	1	--	0	--			--	1	--	

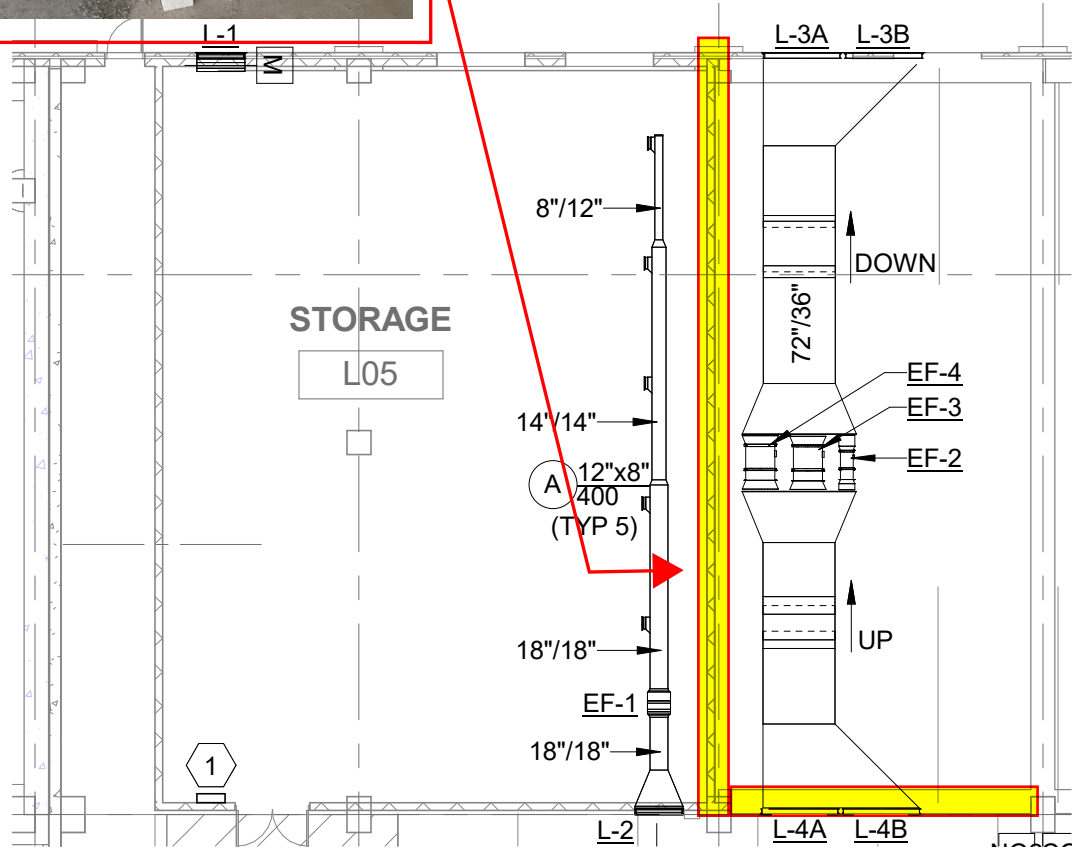
There is not currently a scheduled opening located on the CMU wall shown and highlighted in the PG lower level.

Located underneath the PG lower level ramp section and adjacent to the storage room are scheduled exhaust fans. Those mechanical units will require some sort of opening access to allow for service, maintenance, or replacement. Please advise/specify the type and size of this wall access needed.

See additional clarification needed in the next page.



REF: PG-A2.01



REF: PG-M2.01

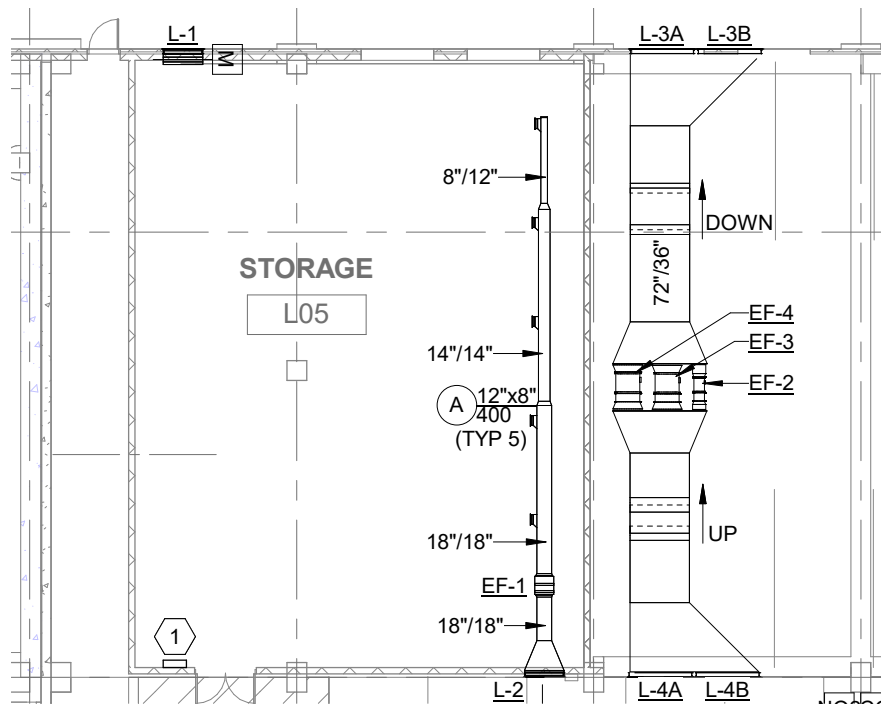


Please additionally clarify if there is any required lighting to be installed in this area.

Lastly, the scheduled CMU partition will seal this area off from ventilation and lighting upon completion. Will there be any signage required to be installed at any wall access location cautioning others of a confined space?



Height of opening 4'-7"



Exhaust Fans (EF) EF-2, EF-3, & EF-4 shown here

WOODARD

Builders Supply

Finish Hardware - Wood Doors - Hollow Metal Doors / Frames

Phone: (817) 222-9012
Fax: (817) 222-0956

6419 Midway Road
Haltom City, TX 76117

Quote

Date: 10/30/2025

To: The Christman Company

From: Andrea Parker

Re: Collin County Healthcare Building - RFI 255

We wish to quote you the following prices to furnish materials listed below as an extra to the contract.

Finish Hardware **\$2,310.00**

Add:

- (1) Continuous Hinge CFM51HD1
- (1) Lockset 70 8204 LNP
- (1) Permanent Core 1C7MJ12 626
- (1) Closer TB 281 CPS EN
- (1) Kickplate K1050 10" x 34" 4BE CSK 32D
- (1) Perimeter Seal 303AS 1/36" x 2/60"
- (1) Door Sweep 315CN 36"

Hollow Metal **\$1,510.00**

Add:

- (1) Hollow Metal Frame 3'-0" x 4'-4 3/4" x 8-3/4" 16GA A60
- (1) Hollow Metal Door 3'-0" x 4'-4 3/4" x 1-3/4" 16GA A60 Flush

This price is net FOB the jobsite for material only and does not include sales tax or installation.

If we are to proceed as outlined above, we must have a signed purchase / change order agreement before we are able to proceed.

Should you require additional information, please let us know.



9/26/2025

The Christman Company

Attn: Mr. Jim Terhune

Re: Collin County Medical Campus
Request for Proposal – RFI #255
GME Proposal X918 RFI #255
GME Project #GME-24-009

Dear Mr. Terhune,

George-McKenna Electrical Contractors has reviewed the above-referenced revision and has found changes to our scope. We are pleased to provide a revised price for you in the amount of **\$2,625.60 (Two Thousand Six Hundred Twenty-five Dollars and 60/100)** for the changes shown and work described below.

Scope: See attached

Drawings: See Attached

We acknowledge receipt of: RFI #255 Pricing request

Pricing is firm for 10 days from date of this letter. We recognize this revision is not issued to proceed, but price only. We will proceed with receipt of your written approval by Change Order or Contract.

If additional information is required, please do not hesitate to contact me.

Sincerely,

Tom Troy

Sr. Project Manager

George-McKenna Electrical Contractors, LLC.

Page Two

Scope:

1. PG-E2.01 Add four type Z1E fixtures, change six Z1 fixtures to Z1E, add one X2 Exit fixture, add one DT sensor, add one surface mounted light switch and delete three TBE fixtures.
2. PG-E2.02 Move light fixtures from circuit #9 to circuit #11 in panel EHG1.
3. PG-E2-03 Move light fixtures from circuit #11 to circuit #13 in panel EHG1
4. PG-E3.00 Add (6) 60A/2 pole breakers to panel LG1, change 100A/3 pole breaker in panel EHG1 to 150A/3 pole breaker and remove (10) 20A/1.

Clarifications:

1. Permits or inspection fees are not included if required.
2. Material may have extended lead time. EST provided once order is placed.
3. Schedule changes were not provided in RFI #255 pricing request; no additional General Conditions are included in this proposal.

Exclusions:

1. Additional sleeves not shown on the drawings.

General Conditions:

1. Any applicable sales taxes are NOT included in our submission.
2. This contractor shall not be held liable for errors or omissions in designs by others, nor inadequacies of materials and equipment specified or supplied by others.
3. Equipment and materials supplied by the contractor are warranted only to the extent that the same are warranted by the manufacturer (unless otherwise required by specification).
4. This contractor shall not be liable for indirect loss or damage.
5. Unless included in this proposal, all bonding and/or special insurance requirements are supplied at additional cost.
6. ***We do not include any cutting, patching or painting of concrete, wall surfaces or ceiling surfaces. Our work is bid with the assumption that our work will be scheduled to be installed in accordance with the manufacturers' recommended installation procedures and NEC code requirements. All back boxes must be installed prior to wall surfaces for new wall construction and wall surfaces must be removed for installation of electrical systems in existing walls.***
7. All material is guaranteed to be as specified (unless noted otherwise). All work to be completed in a workman like manner according to standard practices. Any alteration or deviation from the above specifications involving extra work will be executed and signed for daily, computed utilizing NECA labor and material units and will become an extra charge over and above the estimate.
8. George-McKenna Electrical Contractors, Inc. bids on this project with the assumption that there is no asbestos or lead contamination on the project site, and will not be responsible for the removal, protection from, or disposal of same. If asbestos or lead contamination is found, our personnel will stop work until removal of asbestos or lead from the project site has been completed by others.
9. ***Our proposal is valid for 10 days. After 10 days we reserve the right to adjust our proposal for material and/or labor increases or voidance.***



GEORGE McKENNA LLC
ELECTRICAL CONTRACTORS
 CONSTRUCTION • SERVICE • SECURITY • DATA & PHONE CABLING
 THE SAFE CHOICE SINCE 1981

PROPOSAL REQUEST SUMMARY

Project:	Collin County Medical Campus	GME Project No.	GME 24-009
Description of Work:	RFI #255		
Submitted by:	Tom Troy	Date:	26-Sep-25
		Proposal Request No.	X- 918

LABOR		BURDEN	TOTAL
JOB EXPENSE			
Project Manager	0.00 @ \$70.00 =	\$0.00	
Project Engineer	0.00 @ \$55.00 =	\$0.00	
Superintendent	0.65 @ \$60.00 =	\$38.91	
	0.65	\$38.91	\$17.51
DIRECT FIELD			
Foreman	0.13 @ \$47.50 =	\$6.16	
Electrician	12.97 @ \$43.50 =	\$564.20	
Estimating	0.00 @ \$55.00 =	\$0.00	
Material Handling	0.65 @ \$0.00 =	\$0.00	
Clean-Up	0.65 @ \$0.00 =	\$0.00	
	14.40	\$570.36	\$256.66

LABOR COST \$883.44

MATERIALS/EQUIPMENT		Estimated	Sales Tax 8.25%	Cost
Material	See Attached BOM	\$256.67	\$0.00	\$256.67
QUOTES	Fixture quote	\$966.80	\$79.76	\$1,046.56
			\$0.00	\$0.00
	Lift rental	\$0.00	\$0.00	\$0.00
		\$1,223.47	\$79.76	\$1,303.23

MATERIALS/EQUIPMENT COSTS \$1,303.23

JOB EXPENSE		Cost
Direct Job Expense (SMALL TOOLS)		\$35.34
Indirect Job Expense/Safety	3.8% Yes	\$33.57
Other Job Expense (2% Labor)		\$17.67
		\$86.58

JOB EXPENSE COST \$86.58

PRIME COST		\$2,273.24
OVERHEAD @ 10%		\$227.32
SUB-TOTAL		\$2,500.57
PROFIT @ 5%		\$125.03
SUB-TOTAL		\$2,625.60
Bond Premium @ 0.0%		\$0.00
TOTAL ESTIMATED AMOUNT		\$2,625.60
QUOTED AMOUNT		\$2,626

Scope of Work:

RFI #255

See attached scope for detailed description of work.

Proposal is firm for 10 days only!!!

Job ID: GME-24-009CO
Project: Collin County HC Facilities - Change Orders



CO: CO-0017: X918 RFI #255

Takeoff

29 Sep 2025 10:58:16

Phase: FIXTURES

Item #	Qty	U/M	Q/M	Size	Description	Material Unit	Material Result	Labor Unit	Labor Result
	0 00				PG-E2 01				
TITLE	4 00	EA	M	#12	48" LONG LED SURFACE W/LENS /T-BAR	0 0000	0 00	0 0000	0 00
120021	4 00	EA	M	4 FT	LED SURFACE FIXTURE W/LENS	0 0000	0 00	1 1300	4 52
100137	4 00	EA	M	#18 to 10	WIRE-NUT SML -YELLOW	0 1430	0 57	0 0700	0 28
100139	8 00	EA	M	#18 to 8	WIRE-NUT MED -RED	0 2102	1 68	0 0800	0 64
630712	8 00	EA	M	1/4-20 x 5/8" STUD	T-BAR/ INDEPENDENT SUPT HGR	2 6118	20 89	0 3120	2 50
121416	32 00	FT	M	#10 GAUGE	JACK CHAIN	1 0327	33 05	0 0300	0 96
150006	4 00	EA	M	1-1/2"D	4"SQ CMB-KO NO BRKT	8 4146	33 66	0 3500	1 40
150096	4 00	EA	M		4"SQ BLANK COVER	4 6093	18 44	0 0900	0 36
630500	4 00	EA	M	3/8 PLAIN/THREAD ROD	COMB BOX & 1/2 > 3/4" SNP-CLS COND HGR	10 0028	40 01	0 3120	1 25
630578	4 00	EA	M	1/4" FLANGE	HAMMER-ON FLANGE CLIP - 1/4-20 x 3/8 STD	2 0919	8 37	0 0500	0 20
630545	4 00	EA	M	1/4-20	WASHER NUT 1/4-20	0 5416	2 17	0 0350	0 14
100159	4 00	EA	M	#12 SOL	8" PIGTAIL W/GRD SCREW	2 1399	8 56	0 0800	0 32
670074	8 00	EA	M	3/8 (38AST)	AC/MC SNAP2IT AC/MC CON W/INS THROAT	1 3089	10 47	0 0900	0 72
161350	8 00	EA	M	7"	TIE-WRAP	0 4533	3 63	0 0400	0 32
10054	48 00	FT	M	3/4	EMT	1 6214	77 83	0 0577	2 77
630075	8 00	EA	M	3/4	COND HAMMER-ON HGR 1/4-FLNG SNP-CLOSE HD	3 1380	25 10	0 0750	0 60
30552	4 00	EA	M	3/4	EMT STEEL-COMP COUPLING	7 2632	29 05	0 1581	0 63
30707	8 00	EA	M	3/4	EMT STEEL COMP IN-THRT CONN	13 4486	107 59	0 3700	2 96
90056	106 00	FT	M	16	TFFN CU (STR)	0 2885	30 58	0 0063	0 67
70033	159 00	FT	M	12	THHN/THWN CU (STR)	1 7665	280 87	0 0075	1 19
70228	53 00	FT	M	12	GREEN THHN CU (GRD 20A)	1 7665	93 62	0 0075	0 40
TITLE	1 00	EA	M	#12	EXIT CEILING PEND 1-FACE/EXP-CRETE	0 0000	0 00	0 0000	0 00
120115	1 00	EA	M		EXIT PENDANT MTD 1-FACE	0 0000	0 00	1 8800	1 88
150276	1 00	EA	M	1-1/2"D 15 8-CI	4" OCTAGON BOX COMB KO	13 9109	13 91	0 3500	0 35
161329	2 00	EA	M	25 CAL	SHOT	0 1657	0 33	0 0100	0 02

George McKenna Electrical

2319 East Grauwylar
Irving, TX 75061

Phone: 972-721-1950
Web: <http://www.george-mckenna.com>

Phase: FIXTURES

Item #	Qty	U/M	Q/M	Size	Description	Material Unit	Material Result	Labor Unit	Labor Result
160415	2 00	EA	M	#10	PLTD FLAT WASHER	0 0618	0 12	0 0015	0 00
161332	2 00	EA	M	1"	PIN	0 0796	0 16	0 0900	0 18
100159	1 00	EA	M	#12 SOL	8" PIGTAIL W/GRD SCREW	2 1399	2 14	0 0800	0 08
100137	1 00	EA	M	#18 to 10	WIRE-NUT SML -YELLOW	0 1430	0 14	0 0700	0 07
100139	2 00	EA	M	#18 to 8	WIRE-NUT MED -RED	0 2102	0 42	0 0800	0 16
10054	8 00	FT	M	3/4	EMT	1 6214	12 97	0 0620	0 50
161784	1 00	EA	M	3/4	EMT 1-HOLE STEEL STRAP	0 8906	0 89	0 0500	0 05
161329	1 00	EA	M	25 CAL	SHOT	0 1657	0 17	0 0100	0 01
160415	1 00	EA	M	#10	PLTD FLAT WASHER	0 0618	0 06	0 0015	0 00
161332	1 00	EA	M	1"	PIN	0 0796	0 08	0 0900	0 09
30552	1 00	EA	M	3/4	EMT STEEL-COMP COUPLING	7 2632	7 26	0 1700	0 17
30707	2 00	EA	M	3/4	EMT STEEL COMP IN-THRT CONN	13 4486	26 90	0 3700	0 74
70033	27 00	FT	M	12	THHN/THWN CU (STR)	1 7665	47 69	0 0075	0 20
70228	9 00	FT	M	12	GREEN THHN CU (GRD 20A)	1 7665	15 90	0 0075	0 07
870208	1 00	EA	M	FS-505	ULTRASONIC FIXTURE MTD OCC SENSOR 24VDC	118 6000	118 60	0 6300	0 63
TITLE	1 00	EA	M	3/4 EMT #12	20A-1G-SW-SPEC	0 0000	0 00	0 0000	0 00
140460	1 00	EA	M	20A	1P TOGGLE SPECIFICATION -GRADE	30 8000	30 80	0 3120	0 31
141091	1 00	EA	M	1-TOGGLE	1G ALUM DEVICE PLATE	4 4000	4 40	0 1250	0 13
150603	1 00	EA	M	2-5/8" DEEP 21 3-CI	1G ALUM WP BOX W/ 3 x 3/4"HUBS	51 1936	51 19	0 7500	0 75
100159	1 00	EA	M	#12 SOL	8" PIGTAIL W/GRD SCREW	2 1399	2 14	0 0800	0 08
100139	1 00	EA	M	#18 to 8	WIRE-NUT MED -RED	0 2102	0 21	0 0800	0 08
100137	1 00	EA	M	#18 to 10	WIRE-NUT SML -YELLOW	0 1430	0 14	0 0700	0 07
10054	12 00	FT	M	3/4	EMT	1 6214	19 46	0 0620	0 74
30687	2 00	EA	M	3/4	EMT STEEL COMP CONNECTOR	11 0717	22 14	0 3700	0 74
30562	2 00	EA	M	3/4	EMT STEEL-COMP COUPLING RT	2 1832	4 37	0 1700	0 34
70033	40 00	FT	M	12	THHN/THWN CU (STR)	1 7665	70 66	0 0075	0 30
70228	14 00	FT	M	12	GREEN THHN CU (GRD 20A)	1 7665	24 73	0 0075	0 11
161784	1 00	EA	M	3/4	EMT 1-HOLE STEEL STRAP	0 8906	0 89	0 0500	0 05
161319	1 00	EA	M	1/4 x 1 1/2 - 3"	HAMMER DRILLED HOLE	0 3500	0 35	0 1570	0 16
161307	1 00	EA	M	#8-12 x 1 1/4"	PLASTIC ANCHOR	0 0693	0 07	0 0300	0 03
161276	1 00	EA	M	#12 x 1"	SHEET METAL SCREW	0 1480	0 15	0 0375	0 04
160418	1 00	EA	M	1/4"	PLTD FLAT WASHER	0 0664	0 07	0 0015	0 00
161784	2 00	EA	M	3/4	EMT 1-HOLE STEEL STRAP	0 8906	1 78	0 0500	0 10
161319	4 00	EA	M	1/4 x 1 1/2 - 3"	HAMMER DRILLED HOLE	0 3500	1 40	0 1570	0 63
161307	4 00	EA	M	#8-12 x 1 1/4"	PLASTIC ANCHOR	0 0693	0 28	0 0300	0 12

George McKenna Electrical

2319 East Grauwylar
Irving, TX 75061

Phone: 972-721-1950

Web: <http://www.george-mckenna.com>

Phase: FIXTURES

Item #	Qty	U/M	Q/M	Size	Description	Material Unit	Material Result	Labor Unit	Labor Result
161276	4 00	EA	M	#12 x 1"	SHEET METAL SCREW	0 1480	0 59	0 0375	0 15
160418	2 00	EA	M	1/4"	PLTD FLAT WASHER	0 0664	0 13	0 0015	0 00
	0 00				Remove 3 TBE Fixtures				
TITLE	-3 00	EA	M	#12	LED SURFACE CLG-MOUNT /EXP-CRETE	0 0000	0 00	0 0000	0 00
120029	-3 00	EA	M		LED SURFACE CEILING-MOUNT	0 0000	0 00	1 8800	-5 64
100137	-3 00	EA	M	#18 to 10	WIRE-NUT SML -YELLOW	0 1430	-0 43	0 0700	-0 21
100139	-6 00	EA	M	#18 to 8	WIRE-NUT MED -RED	0 2102	-1 26	0 0800	-0 48
161332	-12 00	EA	M	1"	PIN	0 0796	-0 96	0 0900	-1 08
161329	-12 00	EA	M	25 CAL	SHOT	0 1657	-1 99	0 0100	-0 12
10054	-51 00	FT	M	3/4	EMT	1 6214	-82 69	0 0620	-3 16
161784	-6 00	EA	M	3/4	EMT 1-HOLE STEEL STRAP	0 8906	-5 34	0 0500	-0 30
161329	-6 00	EA	M	25 CAL	SHOT	0 1657	-0 99	0 0100	-0 06
160415	-6 00	EA	M	#10	PLTD FLAT WASHER	0 0618	-0 37	0 0015	-0 01
161332	-6 00	EA	M	1"	PIN	0 0796	-0 48	0 0900	-0 54
30552	-5 00	EA	M	3/4	EMT STEEL-COMP COUPLING	7 2632	-36 32	0 1700	-0 85
30707	-6 00	EA	M	3/4	EMT STEEL COMP IN-THRT CONN	13 4486	-80 69	0 3700	-2 22
70033	-183 00	FT	M	12	THHN/THWN CU (STR)	1 7665	-323 26	0 0075	-1 37
70228	-56 00	FT	M	12	GREEN THHN CU (GRD 20A)	1 7665	-98 92	0 0075	-0 42
	0 00				PG-E2 02				
	0 00				Change from ct# 9 to 11 NC				
	0 00				PG-E2 03				
	0 00				Remove 2 TBE fixtures				
TITLE	-2 00	EA	M	#12	LED SURFACE CLG-MOUNT /EXP-CRETE	0 0000	0 00	0 0000	0 00
120029	-2 00	EA	M		LED SURFACE CEILING-MOUNT	0 0000	0 00	1 8800	-3 76
100137	-2 00	EA	M	#18 to 10	WIRE-NUT SML -YELLOW	0 1430	-0 29	0 0700	-0 14
100139	-4 00	EA	M	#18 to 8	WIRE-NUT MED -RED	0 2102	-0 84	0 0800	-0 32
161332	-8 00	EA	M	1"	PIN	0 0796	-0 64	0 0900	-0 72
161329	-8 00	EA	M	25 CAL	SHOT	0 1657	-1 33	0 0100	-0 08
10054	-34 00	FT	M	3/4	EMT	1 6214	-55 13	0 0620	-2 11
161784	-4 00	EA	M	3/4	EMT 1-HOLE STEEL STRAP	0 8906	-3 56	0 0500	-0 20
161329	-4 00	EA	M	25 CAL	SHOT	0 1657	-0 66	0 0100	-0 04
160415	-4 00	EA	M	#10	PLTD FLAT WASHER	0 0618	-0 25	0 0015	-0 01
161332	-4 00	EA	M	1"	PIN	0 0796	-0 32	0 0900	-0 36
30552	-3 00	EA	M	3/4	EMT STEEL-COMP COUPLING	7 2632	-21 79	0 1700	-0 51
30707	-4 00	EA	M	3/4	EMT STEEL COMP IN-THRT CONN	13 4486	-53 79	0 3700	-1 48

Phase: FIXTURES

Item #	Qty	U/M	Q/M	Size	Description	Material Unit	Material Result	Labor Unit	Labor Result
70033	-122 00	FT	M	12	THHN/THWN CU (STR)	1 7665	-215 51	0 0075	-0 92
70228	-37 00	FT	M	12	GREEN THHN CU (GRD 20A)	1 7665	-65 36	0 0075	-0 28
	0 00				Change from ct# 11 to 13 NC				
	0 00				PG-E3 00				
	0 00				Panel LG1				
180231	6 00	EA	M	60/2	BOLT-ON BREAKER	0 0000	0 00	0 9000	5 40
	0 00				Panel SLG1				
	0 00				Cannot remove ten 20A breakers				
	0 00				Panel EHG1				
180301	1 00	EA	M	150/3	BOLT-ON BREAKER	0 0000	0 00	2 0000	2 00
Phase Totals:							256.67		12.97
Job Totals:							256.67		12.97



ELLIOTT ELECTRIC SUPPLY

Danny Speck
Estimator

Elliott Electric Supply #123
2900 E PIONEER PKWY
Arlington, TX 76010

DANNYSPECK@ELLIOTTELECTRIC.COM

P: 817-422-0258
Extension 123064

Project Name: COLLIN COUNTY HEALTHCARE RFI #255
Date: 10/2/2025
Customer : GEORGE-MCKENNA

QTY	TYPE	NOTES
		RFI #255
-6	Z1	
10	Z1E	
-5	TBE	
1	X2	
1	CTRLS	
		C/N \$966.80



Terms and Conditions:

- 1.) This quote is based on Elliott Electric Supply's best interpretation of submitted specifications and/or drawings. Purchaser should review quote for consistency with specifications and/or drawings.
- 2.) Pricing is per attached Bill of Material only and is valid for 30days.
- 3.) This quote does NOT include tax.
- 4.) This quote does NOT make provisions for any potential US government imposed tariffs.
- 5.) EES shall not be responsible for any failure to perform, or delay in performance of, its obligations resulting from the Covid-19 pandemic or any future epidemic, and Buyer shall not be entitled to any damages resulting thereof.
- 6.) Lead times may vary due to industry supply chain issues.
- 7) **Limitation of Liability:**

The goods sold to the buyer are sold "as is", and seller disclaims any implied warranties with respect to the goods, including, but not limited to, any warranty of merchantability or fitness for a particular purpose.

Seller has made no affirmation of fact or promise relating to the goods being sold that has become any basis of this bargain.

For breach of this agreement, or of any damages caused by defective, damaged, or malfunctioning goods sold or to be sold under this agreement, the buyer agrees to be limited to the repair or replacement of the goods, or the refund of the purchase price, at the seller's option, as the sole and exclusive remedy. Seller shall not be liable for any incidental or consequential damages.

- 8.) **Payment Terms:**

Subject to credit approval. Discounts are allowed as stated on the invoice if paid by the 10th of the month following billing, Net 15th of the month and considered past due thereafter. All payments are due payable at 2526 North Stallings Drive, Nacogdoches, Nacogdoches County, Texas. It is further agreed that each unpaid invoice will bear interest at the maximum limit allowed by law. It is also understood and agreed that if this sale agreement is placed in the hands of an attorney, the Buyer agrees to pay all expenses, including court costs, legal and administrative expenses, and fees paid or incurred by ELLIOTT ELECTRIC SUPPLY. The Credit Department's direct fax number is 936-569-0767.

- 9.) **Receipt of Goods:**

Terms of Delivery made by our Truck - *FOB DESTINATION*. All material becomes the property of the purchasers when the delivery is signed for. Any claims of damage or shortage must be made at the time of the delivery and must be noted on the delivery receipt.

Terms of Delivery made by Common Carrier - *FOB SHIPPING POINT*. All material becomes the property of the purchaser when delivered to the carrier by ELLIOTT ELECTRIC SUPPLY or the manufacturer. Note any damage or shortage on the delivery receipt and file claim with the carrier.

- 10.) **Returned Goods:**

Merchandise returned for credit will be subject to the Manufacturer's Return goods Authorization, terms and conditions. Buyer agrees that deviation or termination after placement of the order could result in a service charge being added to the original order.