

UTILITY CONTACT INFO:

FEED: EVAN GAYLIN
PHONE: (903) 441-3152
ADDRESS: 2000 130 EAST, GREENVILLE, TX. 75402

ATMOS: EISEN SCHERZT
PHONE: (903) 453-2133

SPECTRUM: JACOB NATIONS
PHONE: (409) 261-4473
ADDRESS: 1776 N GREENVILLE AVE, RICHARDSON, TX. 75081

NEVADA SUD: JOHNNY RUDSILL
PHONE: (972) 415-6356
ADDRESS: 108 WARREN ST, NEVADA, TX. 75173

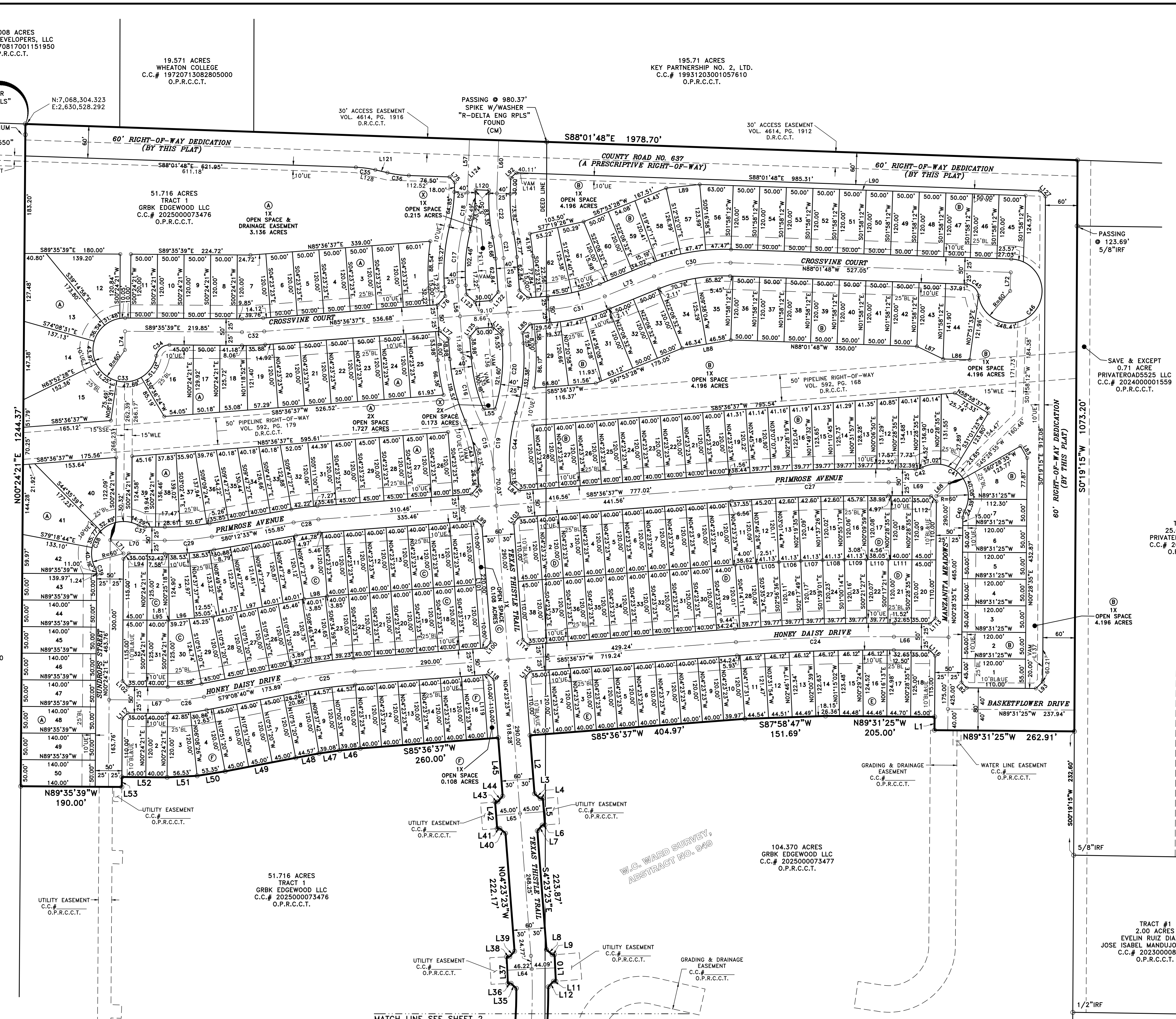
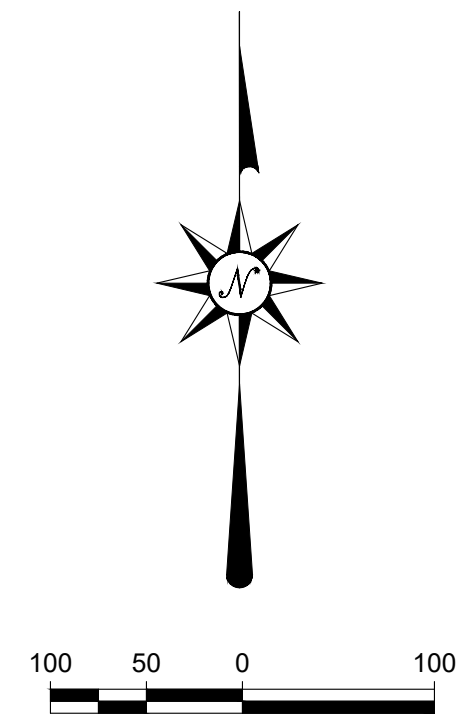
A FINAL PLAT OF DAKOTA HEIGHTS, PHASE 1
IN THE W.C. WARD SURVEY, ABSTRACT NO. 949 COLLIN COUNTY, TEXAS
LOTS 1-50 & 1X-6X, BLOCK A
LOTS 1-62 & 1X, BLOCK B
LOTS 1-32 & 1X, BLOCK C
LOTS 1-38, BLOCK D; LOTS 1-18, BLOCK E;
LOTS 1-16 & 1X, BLOCK F & LOTS 1X-2X, BLOCK X
67.258 ACRES
216 RESIDENTIAL LOTS
11 NON-RESIDENTIAL LOTS



6060 North Central Expressway Suite 400 Dallas, Texas 75206 Phone 469.621.0710 T.B.P.E.L.S. Firm No. 10194382

Date: NOVEMBER 2025 JOB NO. 0371 SHEET 1 OF 3

OWNER/DEVELOPER: GRBK EDGEWOOD LLC & GB878 LLC
5501 HEADQUARTERS DRIVE, SUITE 300W PLANO, TEXAS 75024
PHONE: (972)-365-7535



110.008 ACRES SKYRISE DEVELOPERS, LLC C.C.# 20070817001151950 O.P.R.C.C.T.

19.571 ACRES WHEATON COLLEGE C.C.# 19720713082805000 O.P.R.C.C.T.

195.71 ACRES KEY PARTNERSHIP NO. 2, LTD. C.C.# 19931203001057610 O.P.R.C.C.T.

PASSING @ 123.69' 5/8" IRF

SAVE & EXCEPT PRIVATEROAD5525 LLC C.C.# 202400001559 O.P.R.C.C.T.

TRACT 1 25.00 ACRES PRIVATEROAD5525 LLC C.C.# 202400001559 O.P.R.C.C.T.

TRACT #1 2.00 ACRES EVELIN RUIZ DIAZ & JOSE ISABEL MANDUJONJO REYES C.C.# 2023000087289 O.P.R.C.C.T.

POINT OF BEGINNING SPIKE W/WASHER "R-DELTA ENG RPLS" FOUND (CM)

PASS @ 1224.34' ALUMINUM MONUMENT "R-DELTA ENGINEERS 101550" FOUND

TEMPORARY CONSTRUCTION EASEMENT C.C.# O.P.R.C.C.T.

VARMA PENMATSA & SIRESHA PENMATSA C.C.# 2021041900077670 O.P.R.C.C.T.

UTILITY EASEMENT C.C.# O.P.R.C.C.T.

UTILITY EASEMENT C.C.# O.P.R.C.C.T.

UTILITY EASEMENT C.C.# O.P.R.C.C.T.

UTILITY EASEMENT C.C.# O.P.R.C.C.T.

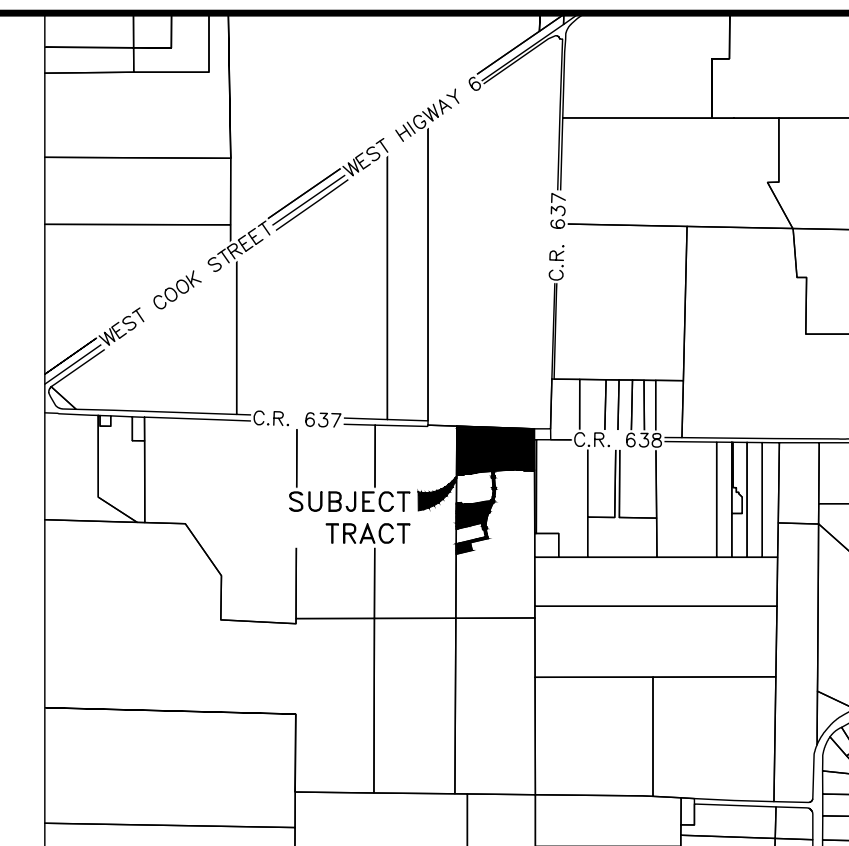
UTILITY EASEMENT C.C.# O.P.R.C.C.T.

UTILITY EASEMENT C.C.# O.P.R.C.C.T.

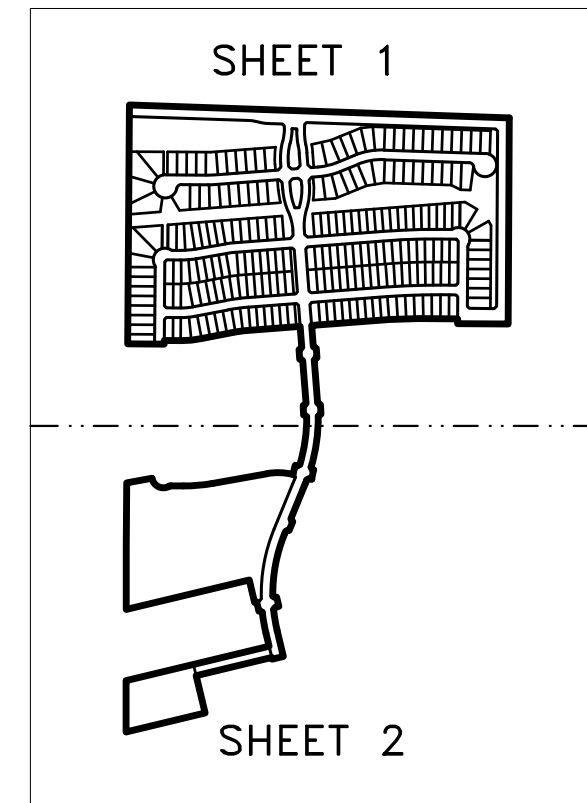
GENERAL NOTES:

- 1. BEARING BASIS BEING GRID NORTH, TEXAS STATE PLANE COORDINATES, NORTH CENTRAL ZONE NAD83, DETERMINED BY GPS OBSERVATIONS UTILIZING THE ALLTERRA RTKNET
- 2. ALL CORNERS ARE 5/8" IRON ROD WITH YELLOW PLASTIC CAP STAMPED "LJA SURVEYING" SET, UNLESS OTHERWISE SPECIFIED.
- 3. FLOOD ZONE DESIGNATION FROM FEDERAL EMERGENCY MANAGEMENT AGENCY FLOOD INSURANCE RATE MAP, COMMUNITY PANEL NO. 480850465J WITH AN EFFECTIVE DATE OF 06/02/2009, WITH AN EFFECTIVE DATE OF 06/02/2009. SUBJECT TRACT LIES WITHIN ZONE X DEFINED AS AREAS DETERMINED TO BE OUTSIDE THE 0.2% ANNUAL CHANCE FLOODPLAIN.
- 4. CLUSTER MAILBOXES SHALL BE MAINTAINED BY THE HOA AND WILL NOT BE MAINTAINED BY THE COUNTY.

S:\NTX-LAND\0371\2005\SURVEY\290 Mapping\0371PA01 - Plat.dwg 11/17/2025



VICINITY MAP NOT TO SCALE



KEY MAP N.T.S.

UTILITY CONTACT INFO:
FEC:
EVAN GAYLIN
PHONE: (903) 441-3152
ADDRESS: 2000 130 EAST,
GREENVILLE, TX. 75402

ATMOS:
EISEN SCHERWITZ
PHONE: (903) 453-2133

SPECTRUM:
JACOB NATIONS
PHONE: (409) 261-4473
ADDRESS: 1776 N GREENVILLE AVE.,
RICHARDSON, TX. 75081

NEVADA SUD:
JOHNNY RUDISILL
PHONE: (972) 415-6356
ADDRESS: 108 WARREN ST.,
NEVADA, TX. 75173

**A
FINAL PLAT
OF
DAKOTA HEIGHTS, PHASE 1**
IN THE
**W.C. WARD SURVEY, ABSTRACT NO. 949
COLLIN COUNTY, TEXAS**
**LOTS 1-50 & 1X-6X, BLOCK A
LOTS 1-62 & 1X, BLOCK B
LOTS 1-32 & 1X, BLOCK C
LOTS 1-38, BLOCK D; LOTS 1-18, BLOCK E;
LOTS 1-16 & 1X, BLOCK F
& LOTS 1X-2X, BLOCK X
67.258 ACRES
216 RESIDENTIAL LOTS
11 NON-RESIDENTIAL LOTS**



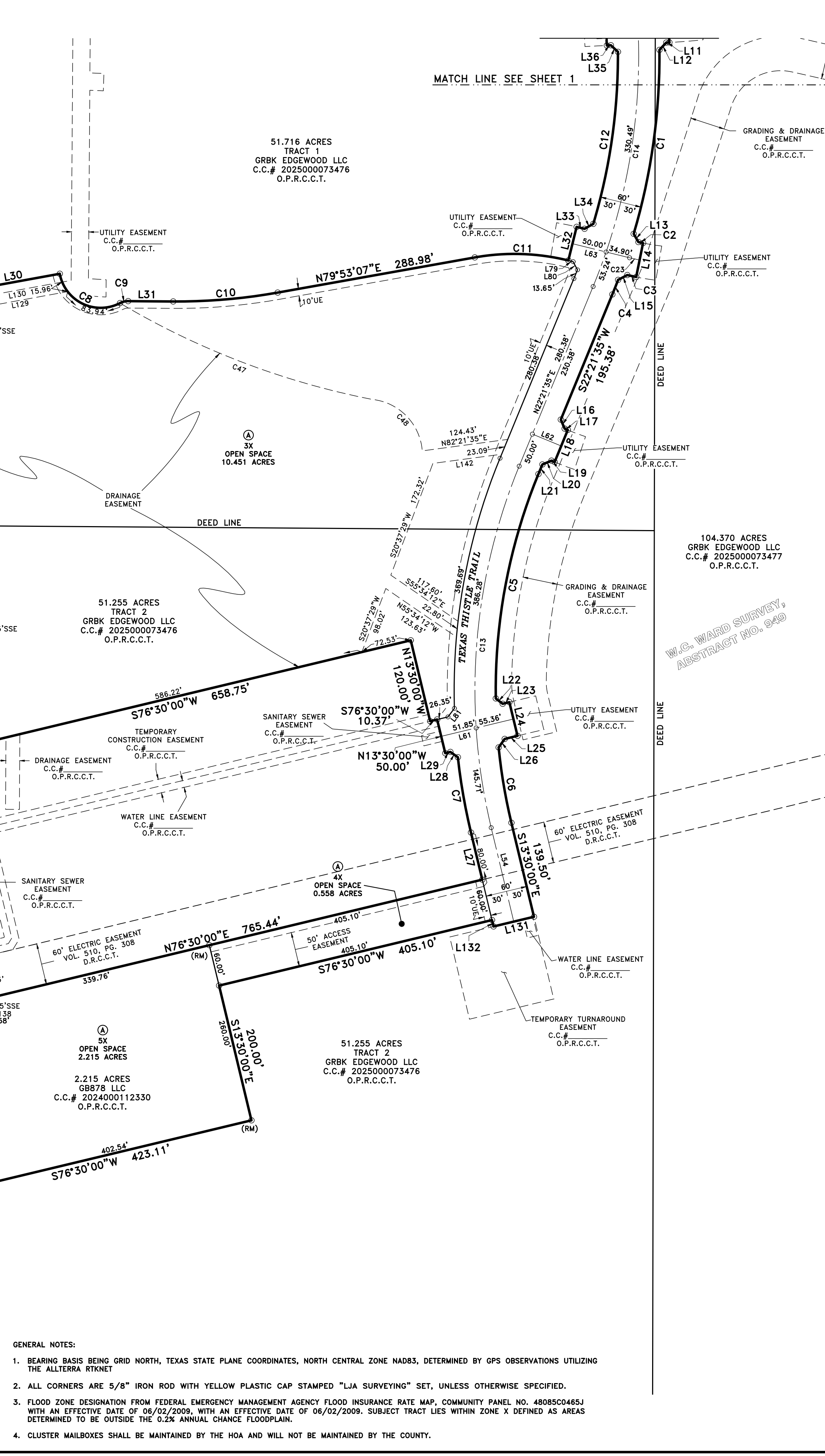
6060 North Central Expressway Phone 469.621.0710
Suite 400
Dallas, Texas 75206 T.B.P.E.L.S. Firm No. 10194382

Date: NOVEMBER 2025 JOB NO. 0371 SHEET 2 OF 3

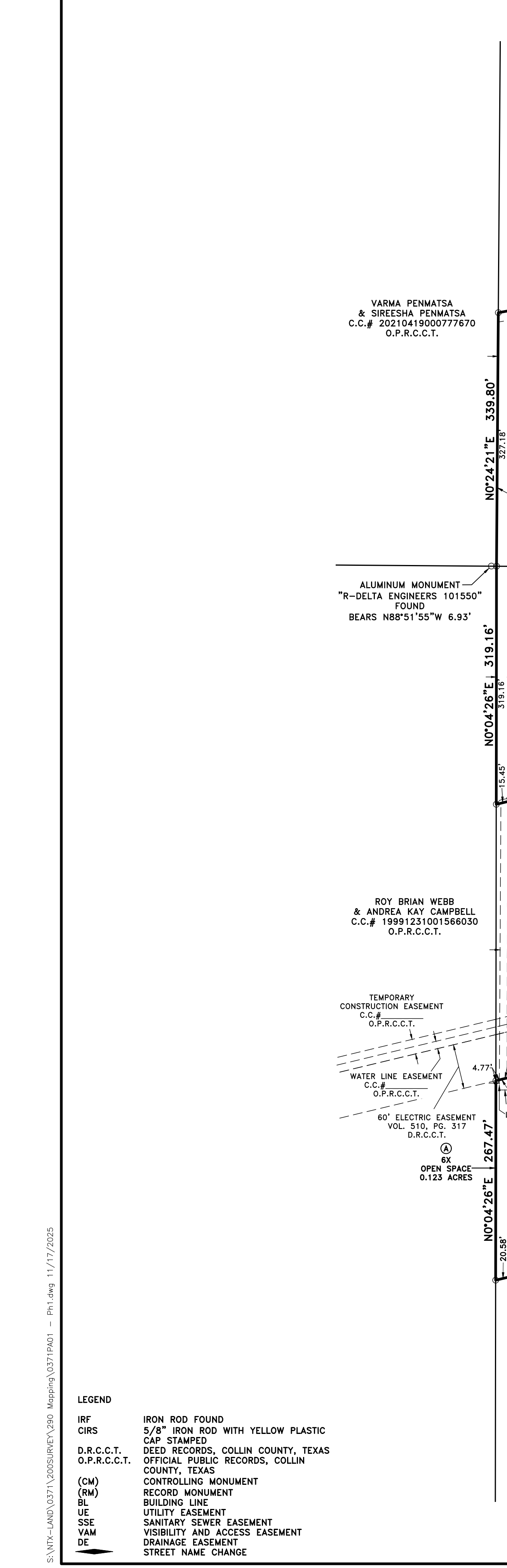
OWNER/DEVELOPER:
GRBK EDGEWOOD LLC & GB878 LLC
5501 HEADQUARTERS DRIVE, SUITE 300W
PLANO, TEXAS 75024
PHONE: (972)-365-7535

LINE	BEARING	DISTANCE	LINE	BEARING	DISTANCE
L1	N00°28'35"E	25.00'	L72	S01°58'12"W	35.00'
L2	S04°23'23"E	110.00'	L73	S67°53'28"W	100.00'
L3	S49°23'23"E	14.14'	L74	S00°24'21"W	35.00'
L4	N85°36'37"E	5.00'	L75	S43°01'48"E	14.14'
L5	S04°23'23"E	50.00'	L76	S40°36'37"W	21.21'
L6	S85°36'37"W	5.00'	L77	S49°23'23"E	21.21'
L7	S40°36'37"W	14.14'	L78	S40°36'37"W	21.21'
L8	S48°34'41"E	14.34'	L79	S76°07'36"E	7.24'
L9	N87°13'56"E	4.44'	L80	S27°30'57"E	13.22'
L10	S02°46'04"E	50.00'	L81	S37°13'55"W	15.48'
L11	S67°13'56"W	4.44'	L82	S44°31'23"E	14.14'
L12	S43°11'09"W	14.38'	L83	N29°31'25"W	25.55'
L13	S29°52'32"E	13.72'	L84	N49°23'23"W	21.21'
L14	S11°26'55"W	50.00'	L85	N40°36'37"E	21.21'
L15	S62°12'54"W	14.96'	L86	N88°01'48"W	50.00'
L16	S22°38'25"E	14.14'	L87	N64°22'31"W	54.59'
L17	S67°38'25"E	5.00'	L88	S80°21'39"W	92.91'
L18	S22°21'35"W	50.00'	L89	S63°47'51"W	63.56'
L19	N67°38'25"W	5.00'	L90	N88°01'48"W	613.00'
L20	S67°21'35"W	14.14'	L91	N49°23'23"W	21.21'
L21	S22°21'35"W	15.00'	L92	N46°58'12"E	14.14'
L22	S52°20'34"E	12.54'	L93	N45°28'35"E	17.91'
L23	N76°30'00"E	10.00'	L94	N45°24'21"E	14.14'
L24	S13°30'00"E	50.00'	L95	N89°35'39"W	40.00'
L25	S76°30'00"W	18.99'	L96	S85°09'19"W	47.66'
L26	S35°31'58"W	15.10'	L97	S79°08'40"W	40.01'
L27	N13°30'00"W	70.00'	L98	S82°46'35"W	43.86'
L28	N54°44'39"W	13.19'	L99	S49°23'23"E	14.14'
L29	S76°30'00"W	7.62'	L100	S40°36'37"W	14.14'
L30	N79°39'46"E	133.39'	L101	N04°23'23"W	240.00'
L31	S89°35'39"E	65.00'	L102	N44°35'39"W	14.14'
L32	N13°52'24"E	50.00'	L103	N40°36'37"E	14.14'
L33	S76°07'36"E	11.77'	L104	N85°01'39"E	41.13'
L34	N60°28'34"E	14.52'	L105	N83°59'58"E	41.13'
L35	N46°45'02"W	13.89'	L106	N87°17'52"E	41.13'
L36	S87°13'56"W	5.85'	L107	N87°56'06"E	41.13'
L37	N02°46'04"W	50.00'	L108	N88°46'41"E	41.13'
L38	N87°13'56"E	5.85'	L109	N89°26'40"E	41.13'
L39	N41°25'16"E	13.94'	L110	S89°58'05"E	41.13'
L40	N49°23'23"W	14.14'	L111	S89°31'25"E	44.56'
L41	S85°36'37"W	5.00'	L112	S44°31'25"E	14.14'
L42	N04°23'23"W	50.00'	L113	S45°28'35"W	14.14'
L43	N85°36'37"E	5.00'	L114	N49°23'23"W	14.14'
L44	N40°36'37"E	14.14'	L115	N40°36'37"E	14.14'
L45	N04°23'23"W	110.00'	L116	S44°31'25"E	14.14'
L46	S84°18'02"W	39.08'	L117	N45°24'21"E	14.14'
L47	S81°40'52"W	39.08'	L118	S49°23'23"E	14.14'
L48	S79°23'48"W	44.57'	L119	N04°23'23"W	120.00'
L49	S79°08'40"W	25.00'	L120	S88°01'48"E	25.00'
L50	S80°56'38"W	63.35'	L121	S76°54'53"E	23.32'
L51	S87°07'58"W	56.53'	L122	S40°36'37"W	14.14'
L52	N89°35'39"W	85.00'	L123	N49°23'23"W	14.14'
L53	S00°24'21"W	18.76'	L124	N46°58'12"E	14.14'
L54	N13°30'00"W	139.50'	L125	N40°36'37"E	21.21'
L55	N04°23'23"W	215.00'	L126	S44°36'51"E	12.92'
L56	N04°23'23"W	136.19'	L127	S43°51'17"E	14.34'
L57	N01°58'12"E	100.00'	L128	N76°48'48"W	61.51'
L58	N04°23'23"W	34.55'	L129	S79°39'46"W	129.94'
L59	N04°23'23"W	162.40'	L130	N79°39'46"E	137.04'
L60	N01°58'12"E	100.00'	L131	S76°30'00"W	60.00'
L61	N76°30'00"E	107.21'	L132	N13°30'00"W	9.50'
L62	N67°38'25"W	45.04'	L133	S07°29'23"E	85.39'
L63	N76°07'36"W	84.90'	L134	S02°25'19"E	195.78'
L64	S87°13'56"W	90.32'	L135	S14°36'06"E	112.15'
L65	S85°36'37"W	90.00'	L136	N03°51'52"W	153.18'
L66	N89°31'25"W	102.65'	L137	N02°28'06"E	62.59'
L67	N89°35'39"W	110.00'	L138	S00°00'00"E	17.29'
L68	S45°28'35"W	35.35'	L139	N89°40'19"W	15.10'
L69	N89°31'25"W	114.97'	L140	N00°19'48"E	13.60'
L70	N89°35'39"W	102.42'	L141	S88°47'02"W	42.54'
L71	S44°35'39"E	35.35'	L142	S82°21'35"W	100.11'

CURVE	CENTRAL ANGLE	RADIUS	CHORD BEARING	CHORD LENGTH	ARC LENGTH
C1	17°02'20"	905.00'	S7°58'04"W	268.14'	269.14'
C2	01°11'44"	325.00'	S72°51'44"E	6.78'	6.78'
C3	02°00'20"	375.00'	N77°32'55"W	13.13'	13.13'
C4	01°25'44"	905.00'	S21°38'43"W	22.57'	22.57'
C5	23°11'45"	820.00'	S10°45'43"W	329.71'	331.97'
C6	07°42'58"	820.00'	S09°38'31"E	110.35'	110.43'
C7	07°11'11"	880.00'	N09°54'25"W	110.30'	110.37'
C8	107°19'46"	60.00'	S64°00'07"E	96.67'	112.40'
C9	28°04'21"	25.00'	N72°21'11"E	12.13'	12.25'
C10	10°31'14"	825.00'	N85°08'44"E	151.27'	151.49'
C11	23°59'17"	325.00'	S88°07'14"E	135.08'	136.07'
C12	17°04'03"	845.00'	N08°08'22"E	250.78'	251.71'
C13	35°51'35"	850.00'	N04°25'48"E	523.35'	531.99'
C14	26°44'59"	875.00'	N08°59'06"E	404.81'	408.51'
C15	21°55'42"	230.00'	N15°21'16"W	87.49'	88.03'
C16	21°55'35"	335.00'	N15°21'11"W	127.42'	128.20'
C17	18°20'46"	335.00'	N04°46'59"E	106.81'	107.27'
C18	11°59'11"	335.00'	N07°57'47"E	69.95'	70.08'
C19	24°04'06"	230.00'	N07°38'40"E	95.91'	96.62'
C20	24°04'06"	335.00'	N07°38'40"E	139.69'	140.72'
C21	07°17'03"	335.00'	N08°01'55"W	42.56'	42.59'
C22	13°38'38"	335.00'	N04°51'08"W	79.59'	79.77'
C23	02°59'32"	350.00'	N77°37'22"W	18.28'	18.28'
C24	04°51'58"	3500.00'	S88°02'36"W	297.17'	297.26'
C25	06°27'56"	1000.00'	S82°22'36"W	112.79'	112.85'
C26	11°15'41"	350.00'	S84°46'31"W	68.68'	68.79'
C27	04°51'58"	3500.00'	S88°02'36"W	297.17'	297.26'
C28	05°24'04"	500.00'	S82°54'35"W	47.12'	47.13'
C29	10°11'49"	500.00'	S85°18'27"W	88.87'	88.98'
C30	24°04'44"	350.00'	S79°55'50"W	146.01'	147.09'
C31	17°43'08"	350.00'	S76°45'02"W	107.81'	108.24'
C32	04°47'46"	500.00'	S86°00'29"W	41.84'	41.85'
C33	25°50'09"	60.00'	S39°30'43"E	92.04'	272.10'
C34	79°50'09"	25.00'	N50°29'17"E	32.08'	34.83'
C35	11°06'55"	190.50'	S82°28'21"E	36.90'	36.96'
C36	11°06'55"	209.50'	S82°28'21"E	40.58'	40.64'
C37	28°04'21"	25.00'	N75°33'28"W	12.13'	12.25'
C38	146°08'42"	60.00'	S45°24'21"W	114.80'	153.04'
C39	28°04'21"	25.00'	S13°37'49"E	12.13'	12.25'
C40	28°04'21"	25.00'	N14°26'45"E	12.13'	12.25'
C41	146°08'42"	60.00'	N44°31'25"W	114.80'	153.04'
C42	28°04'21"	25.00'	S76°26'24"W	12.13'	12.25'
C43	18°55'48"	300.00'	S13°51'18"E	98.67'	99.12'
C44	21°04'08"	300.00'	N06°06'40"E	109.70'	110.32'
C45	79°50'09"	25.00'	S48°06'44"E	32.08'	34.83'
C46	259°47'46"	60.00'	N41°54'28"E	92.06'	272.06'
C47	19°34'47"	1143.70'	S69°04'45"E	388.94'	390.84'
C48	80°00'51"	81.04'	S44°26'52"E	104.19'	113.16'



GENERAL NOTES:
1. BEARING BASIS BEING GRID NORTH, TEXAS STATE PLANE COORDINATES, NORTH CENTRAL ZONE NAD83, DETERMINED BY GPS OBSERVATIONS UTILIZING THE ALLTERRA RTKNET
2. ALL CORNERS ARE 5/8" IRON ROD WITH YELLOW PLASTIC CAP STAMPED "LJA SURVEYING" SET, UNLESS OTHERWISE SPECIFIED.
3. FLOOD ZONE DESIGNATION FROM FEDERAL EMERGENCY MANAGEMENT AGENCY FLOOD INSURANCE RATE MAP, COMMUNITY PANEL NO. 4808500465J WITH AN EFFECTIVE DATE OF 06/02/2009, WITH AN EFFECTIVE DATE OF 06/02/2009. SUBJECT TRACT LIES WITHIN ZONE X DEFINED AS AREAS DETERMINED TO BE OUTSIDE THE 0.2% ANNUAL CHANCE FLOODPLAIN.
4. CLUSTER MAILBOXES SHALL BE MAINTAINED BY THE HOA AND WILL NOT BE MAINTAINED BY THE COUNTY.



LEGEND
IRF IRON ROD FOUND
CIRS 5/8" IRON ROD WITH YELLOW PLASTIC CAP STAMPED
D.R.C.C.T. DEED RECORDS, COLLIN COUNTY, TEXAS
O.P.R.C.C.T. OFFICIAL PUBLIC RECORDS, COLLIN COUNTY, TEXAS
(CM) CONTROLLING MONUMENT
(RM) RECORD MONUMENT
BL BUILDING LINE
UE UTILITY EASEMENT
SSE SANITARY SEWER EASEMENT
YAM VISIBILITY AND ACCESS EASEMENT
DE DRAINAGE EASEMENT
STREET NAME CHANGE

STATE OF TEXAS
COUNTY OF COLLIN

OWNER'S CERTIFICATE

WHEREAS GRBK EDGEWOOD LLC AND GB878 LLC, ARE THE OWNERS OF A 67.258 ACRE TRACT OF LAND SITUATED IN THE W. C. WARD SURVEY, ABSTRACT NO. 949, COLLIN COUNTY, TEXAS, AND BEING PART OF A 51.716 ACRE TRACT OF LAND CONVEYED AS "TRACT 1" AND PART OF A 51.255 ACRE TRACT OF LAND CONVEYED AS "TRACT 2" TO GRBK EDGEWOOD LLC, AS RECORDED IN COUNTY CLERK'S FILE NO. 202500073476, OFFICIAL PUBLIC RECORDS, COLLIN COUNTY, TEXAS, BEING PART OF A 104.370 ACRE TRACT OF LAND CONVEYED TO GRBK EDGEWOOD LLC, AS RECORDED IN COUNTY CLERK'S FILE NO. 202500073477, OFFICIAL PUBLIC RECORDS, COLLIN COUNTY, TEXAS, AND BEING ALL OF A 2.215 ACRE TRACT OF LAND CONVEYED TO GB878 LLC, AS RECORDED IN COUNTY CLERK'S FILE NO. 202400112330, OFFICIAL PUBLIC RECORDS, COLLIN COUNTY, TEXAS, SAID 67.258 ACRE TRACT, WITH BEARING BASIS BEING GRID NORTH, TEXAS STATE PLANE COORDINATES, NORTH CENTRAL ZONE, NAD83, DETERMINED BY GPS OBSERVATIONS UTILIZING THE ALLTERRA RTKNET.

BEGINNING AT A SPIKE WITH WASHER STAMPED "R-DELTA ENG RPLS" FOUND FOR THE NORTHWEST CORNER OF SAID 51.716 ACRE TRACT AND THE COMMON NORTHEAST CORNER OF A TRACT OF LAND CONVEYED TO VARMA PENMATSAS AND SIREESHA PENMATSAS, AS RECORDED IN COUNTY CLERK'S FILE NO. 2021041900077670, OFFICIAL PUBLIC RECORDS, COLLIN COUNTY, TEXAS, SAID POINT BEING IN THE SOUTH LINE OF A 110.038 ACRE TRACT OF LAND CONVEYED TO SKYZIDE DEVELOPERS, LLC, AS RECORDED IN COUNTY CLERK'S FILE NO. 20070817001151950, OFFICIAL PUBLIC RECORDS, COLLIN COUNTY, TEXAS AND BEING WITHIN THE APPROXIMATE CENTER OF COUNTY ROAD NO. 637 (A PRESCRIPTIVE RIGHT-OF-WAY);

THENCE, SOUTH 88 DEGREES 01 MINUTE 48 SECONDS EAST, ALONG THE NORTH LINE OF SAID 51.716 ACRE TRACT, THE COMMON SOUTH LINE OF SAID 110.008 ACRE TRACT, THE COMMON SOUTH LINE OF A 19.571 ACRE TRACT OF LAND CONVEYED TO WHEATON COLLEGE, AS RECORDED IN COUNTY CLERK'S FILE NO. 19720713082805000, OFFICIAL PUBLIC RECORDS, COLLIN COUNTY, TEXAS, THE COMMON SOUTH LINE OF A 195.71 ACRE TRACT OF LAND CONVEYED TO KEY PARTNERSHIP NO. 2, L.T.D., AS RECORDED IN COUNTY CLERK'S FILE NO. 19931203001057610, OFFICIAL PUBLIC RECORDS, COLLIN COUNTY, TEXAS AND WITH SAID COUNTY ROAD, PASSING AT A DISTANCE OF 890.37 FEET A SPIKE WITH WASHER STAMPED "R-DELTA ENG RPLS" FOUND FOR THE NORTHEAST CORNER OF SAID 51.716 ACRE TRACT AND THE COMMON NORTHWEST CORNER OF AFORESAID 104.370 ACRE TRACT, AND CONTINUING ALONG THE NORTH LINE OF SAID 104.370 ACRE TRACT AND THE COMMON SOUTH LINE OF SAID 195.71 ACRE TRACT, WITH SAID COUNTY ROAD, IN ALL, A TOTAL DISTANCE OF 1978.70 FEET TO A 5/8 INCH IRON ROD WITH YELLOW PLASTIC CAP STAMPED "LJA SURVEYING" SET FOR THE NORTHEAST CORNER OF SAID 104.370 ACRE TRACT.

THENCE, SOUTH 00 DEGREES 19 MINUTES 15 SECONDS WEST, ALONG THE EAST LINE OF SAID 104.370 ACRE TRACT, PASSING AT A DISTANCE OF 122.69 FEET TO A 5/8 INCH IRON ROD FOUND FOR THE NORTHWEST CORNER OF A 25.00 ACRE TRACT OF LAND CONVEYED AS "TRACT 1" TO PRIVATEROAD5525 LLC, AS RECORDED IN COUNTY CLERK'S FILE NO. 202400001559, OFFICIAL PUBLIC RECORDS, COLLIN COUNTY, TEXAS AND CONTINUING ALONG THE EAST LINE OF SAID 104.370 ACRE TRACT AND THE COMMON WEST LINE OF SAID 25.00 ACRE TRACT, IN ALL, A TOTAL DISTANCE OF 1073.20 FEET TO A 5/8 INCH IRON ROD WITH YELLOW PLASTIC CAP STAMPED "LJA SURVEYING" SET FOR CORNER, FROM WHICH A 5/8 INCH IRON ROD FOUND FOR THE NORTHWEST CORNER OF A 2.00 ACRE TRACT OF LAND CONVEYED AS "TRACT #1" TO EVELIN RUIZ DIAZ AND JOSE ISABEL MANDUJONO REYES, AS RECORDED IN COUNTY CLERK'S FILE NO. 2023000087289, OFFICIAL PUBLIC RECORDS, COLLIN COUNTY, TEXAS, BEARS SOUTH 00 DEGREES 19 MINUTES 15 SECONDS WEST, A DISTANCE OF 232.80 FEET.

THENCE, OVER AND ACROSS SAID 104.370 ACRE TRACT, AFORESAID 51.716 ACRE TRACT AND AFORESAID 51.255 ACRE TRACT, THE FOLLOWING COURSES AND DISTANCES:

NORTH 89 DEGREES 31 MINUTES 25 SECONDS WEST, A DISTANCE OF 262.91 FEET TO A 5/8 INCH IRON ROD WITH YELLOW PLASTIC CAP STAMPED "LJA SURVEYING" SET FOR CORNER;

NORTH 00 DEGREES 28 MINUTES 35 SECONDS EAST, A DISTANCE OF 25.00 FEET TO A 5/8 INCH IRON ROD WITH YELLOW PLASTIC CAP STAMPED "LJA SURVEYING" SET FOR CORNER;

NORTH 89 DEGREES 31 MINUTES 25 SECONDS WEST, A DISTANCE OF 205.00 FEET TO A 5/8 INCH IRON ROD WITH YELLOW PLASTIC CAP STAMPED "LJA SURVEYING" SET FOR CORNER;

SOUTH 87 DEGREES 58 MINUTES 47 SECONDS WEST, A DISTANCE OF 151.69 FEET TO A 5/8 INCH IRON ROD WITH YELLOW PLASTIC CAP STAMPED "LJA SURVEYING" SET FOR CORNER;

SOUTH 85 DEGREES 36 MINUTES 37 SECONDS WEST, A DISTANCE OF 404.97 FEET TO A 5/8 INCH IRON ROD WITH YELLOW PLASTIC CAP STAMPED "LJA SURVEYING" SET FOR CORNER;

SOUTH 04 DEGREES 23 MINUTES 23 SECONDS EAST, A DISTANCE OF 110.00 FEET TO A 5/8 INCH IRON ROD WITH YELLOW PLASTIC CAP STAMPED "LJA SURVEYING" SET FOR CORNER;

SOUTH 49 DEGREES 23 MINUTES 23 SECONDS EAST, A DISTANCE OF 14.14 FEET TO A 5/8 INCH IRON ROD WITH YELLOW PLASTIC CAP STAMPED "LJA SURVEYING" SET FOR CORNER;

NORTH 85 DEGREES 36 MINUTES 37 SECONDS EAST, A DISTANCE OF 5.00 FEET TO A 5/8 INCH IRON ROD WITH YELLOW PLASTIC CAP STAMPED "LJA SURVEYING" SET FOR CORNER;

SOUTH 04 DEGREES 23 MINUTES 23 SECONDS EAST, A DISTANCE OF 50.00 FEET TO A 5/8 INCH IRON ROD WITH YELLOW PLASTIC CAP STAMPED "LJA SURVEYING" SET FOR CORNER;

SOUTH 85 DEGREES 36 MINUTES 37 SECONDS WEST, A DISTANCE OF 5.00 FEET TO A 5/8 INCH IRON ROD WITH YELLOW PLASTIC CAP STAMPED "LJA SURVEYING" SET FOR CORNER;

SOUTH 40 DEGREES 36 MINUTES 37 SECONDS WEST, A DISTANCE OF 14.14 FEET TO A 5/8 INCH IRON ROD WITH YELLOW PLASTIC CAP STAMPED "LJA SURVEYING" SET FOR CORNER;

SOUTH 04 DEGREES 23 MINUTES 23 SECONDS EAST, A DISTANCE OF 223.87 FEET TO A 5/8 INCH IRON ROD WITH YELLOW PLASTIC CAP STAMPED "LJA SURVEYING" SET FOR CORNER;

SOUTH 48 DEGREES 34 MINUTES 41 SECONDS EAST, A DISTANCE OF 14.34 FEET TO A 5/8 INCH IRON ROD WITH YELLOW PLASTIC CAP STAMPED "LJA SURVEYING" SET FOR CORNER;

NORTH 87 DEGREES 13 MINUTES 56 SECONDS EAST, A DISTANCE OF 4.44 FEET TO A 5/8 INCH IRON ROD WITH YELLOW PLASTIC CAP STAMPED "LJA SURVEYING" SET FOR CORNER;

SOUTH 02 DEGREES 46 MINUTES 04 SECONDS EAST, A DISTANCE OF 50.00 FEET TO A 5/8 INCH IRON ROD WITH YELLOW PLASTIC CAP STAMPED "LJA SURVEYING" SET FOR CORNER;

SOUTH 87 DEGREES 13 MINUTES 56 SECONDS WEST, A DISTANCE OF 4.44 FEET TO A 5/8 INCH IRON ROD WITH YELLOW PLASTIC CAP STAMPED "LJA SURVEYING" SET FOR CORNER;

SOUTH 43 DEGREES 11 MINUTES 09 SECONDS WEST, A DISTANCE OF 14.38 FEET TO A 5/8 INCH IRON ROD WITH YELLOW PLASTIC CAP STAMPED "LJA SURVEYING" SET FOR CORNER AND THE BEGINNING OF A NON-TANGENT CURVE TO THE RIGHT HAVING A CENTRAL ANGLE OF 17 DEGREES 02 MINUTES 20 SECONDS, A RADIUS OF 905.00 FEET AND A LONG CHORD THAT BEARS SOUTH 07 DEGREES 58 MINUTES 04 SECONDS WEST, A DISTANCE OF 288.14 FEET;

ALONG SAID NON-TANGENT CURVE TO THE RIGHT, AN ARC DISTANCE OF 269.14 FEET TO A 5/8 INCH IRON ROD WITH YELLOW PLASTIC CAP STAMPED "LJA" SET FOR CORNER;

SOUTH 29 DEGREES 52 MINUTES 32 SECONDS EAST, A DISTANCE OF 13.72 FEET TO A 5/8 INCH IRON ROD WITH YELLOW PLASTIC CAP STAMPED "LJA SURVEYING" SET FOR CORNER AND THE BEGINNING OF A NON-TANGENT CURVE TO THE LEFT HAVING A CENTRAL ANGLE OF 01 DEGREE 11 MINUTES 44 SECONDS, A RADIUS OF 325.00 FEET AND A LONG CHORD THAT BEARS SOUTH 77 DEGREES 57 MINUTES 13 SECONDS EAST, A DISTANCE OF 5.78 FEET;

ALONG SAID NON-TANGENT CURVE TO THE LEFT, AN ARC DISTANCE OF 6.78 FEET TO A 5/8 INCH IRON ROD WITH YELLOW PLASTIC CAP STAMPED "LJA" SET FOR CORNER;

SOUTH 11 DEGREES 26 MINUTES 55 SECONDS WEST, A DISTANCE OF 50.00 FEET TO A 5/8 INCH IRON ROD WITH YELLOW PLASTIC CAP STAMPED "LJA SURVEYING" SET FOR CORNER AND THE BEGINNING OF A NON-TANGENT CURVE TO THE RIGHT HAVING A CENTRAL ANGLE OF 02 DEGREES 00 MINUTES 20 SECONDS, A RADIUS OF 375.00 FEET AND A LONG CHORD THAT BEARS NORTH 77 DEGREES 32 MINUTES 55 SECONDS WEST, A DISTANCE OF 13.13 FEET;

ALONG SAID NON-TANGENT CURVE TO THE RIGHT, AN ARC DISTANCE OF 13.13 FEET TO A 5/8 INCH IRON ROD WITH YELLOW PLASTIC CAP STAMPED "LJA" SET FOR CORNER;

SOUTH 62 DEGREES 12 MINUTES 54 SECONDS WEST, A DISTANCE OF 14.96 FEET TO A 5/8 INCH IRON ROD WITH YELLOW PLASTIC CAP STAMPED "LJA SURVEYING" SET FOR CORNER AND THE BEGINNING OF A NON-TANGENT CURVE TO THE RIGHT HAVING A CENTRAL ANGLE OF 01 DEGREE 25 MINUTES 44 SECONDS, A RADIUS OF 905.00 FEET AND A LONG CHORD THAT BEARS SOUTH 21 DEGREES 38 MINUTES 43 SECONDS WEST, A DISTANCE OF 22.57 FEET;

ALONG SAID NON-TANGENT CURVE TO THE RIGHT, AN ARC DISTANCE OF 22.57 FEET TO A 5/8 INCH IRON ROD WITH YELLOW PLASTIC CAP STAMPED "LJA" SET FOR CORNER;

SOUTH 22 DEGREES 21 MINUTES 35 SECONDS WEST, A DISTANCE OF 195.38 FEET TO A 5/8 INCH IRON ROD WITH YELLOW PLASTIC CAP STAMPED "LJA SURVEYING" SET FOR CORNER;

SOUTH 22 DEGREES 38 MINUTES 25 SECONDS EAST, A DISTANCE OF 14.14 FEET TO A 5/8 INCH IRON ROD WITH YELLOW PLASTIC CAP STAMPED "LJA SURVEYING" SET FOR CORNER;

SOUTH 67 DEGREES 38 MINUTES 25 SECONDS EAST, A DISTANCE OF 5.00 FEET TO A 5/8 INCH IRON ROD WITH YELLOW PLASTIC CAP STAMPED "LJA SURVEYING" SET FOR CORNER;

SOUTH 22 DEGREES 21 MINUTES 35 SECONDS WEST, A DISTANCE OF 50.00 FEET TO A 5/8 INCH IRON ROD WITH YELLOW PLASTIC CAP STAMPED "LJA SURVEYING" SET FOR CORNER;

NORTH 67 DEGREES 38 MINUTES 25 SECONDS WEST, A DISTANCE OF 5.00 FEET TO A 5/8 INCH IRON ROD WITH YELLOW PLASTIC CAP STAMPED "LJA SURVEYING" SET FOR CORNER;

SOUTH 67 DEGREES 21 MINUTES 35 SECONDS WEST, A DISTANCE OF 14.14 FEET TO A 5/8 INCH IRON ROD WITH YELLOW PLASTIC CAP STAMPED "LJA SURVEYING" SET FOR CORNER;

SOUTH 22 DEGREES 21 MINUTES 35 SECONDS WEST, A DISTANCE OF 15.00 FEET TO A 5/8 INCH IRON ROD WITH YELLOW PLASTIC CAP STAMPED "LJA SURVEYING" SET FOR CORNER AND THE BEGINNING OF A TANGENT CURVE TO THE LEFT HAVING A CENTRAL ANGLE OF 23 DEGREES 11 MINUTES 45 SECONDS, A RADIUS OF 820.00 FEET AND A LONG CHORD THAT BEARS SOUTH 10 DEGREES 45 MINUTES 43 SECONDS WEST, A DISTANCE OF 329.71 FEET;

ALONG SAID TANGENT CURVE TO THE LEFT, AN ARC DISTANCE OF 331.97 FEET TO A 5/8 INCH IRON ROD WITH YELLOW PLASTIC CAP STAMPED "LJA" SET FOR CORNER;

SOUTH 52 DEGREES 20 MINUTES 34 SECONDS EAST, A DISTANCE OF 12.54 FEET TO A 5/8 INCH IRON ROD WITH YELLOW PLASTIC CAP STAMPED "LJA SURVEYING" SET FOR CORNER;

NORTH 76 DEGREES 30 MINUTES 00 SECONDS EAST, A DISTANCE OF 10.00 FEET TO A 5/8 INCH IRON ROD WITH YELLOW PLASTIC CAP STAMPED "LJA SURVEYING" SET FOR CORNER;

SOUTH 13 DEGREES 30 MINUTES 00 SECONDS EAST, A DISTANCE OF 50.00 FEET TO A 5/8 INCH IRON ROD WITH YELLOW PLASTIC CAP STAMPED "LJA SURVEYING" SET FOR CORNER;

SOUTH 76 DEGREES 30 MINUTES 00 SECONDS WEST, A DISTANCE OF 18.99 FEET TO A 5/8 INCH IRON ROD WITH YELLOW PLASTIC CAP STAMPED "LJA SURVEYING" SET FOR CORNER;

SOUTH 35 DEGREES 31 MINUTES 58 SECONDS WEST, A DISTANCE OF 15.10 FEET TO A 5/8 INCH IRON ROD WITH YELLOW PLASTIC CAP STAMPED "LJA SURVEYING" SET FOR CORNER AND THE BEGINNING OF A NON-TANGENT CURVE TO THE LEFT HAVING A CENTRAL ANGLE OF 07 DEGREES 42 MINUTES 59 SECONDS, A RADIUS OF 820.00 FEET AND A LONG CHORD THAT BEARS SOUTH 09 DEGREES 38 MINUTES 31 SECONDS EAST, A DISTANCE OF 110.35 FEET;

ALONG SAID NON-TANGENT CURVE TO THE LEFT, AN ARC DISTANCE OF 110.43 FEET TO A 5/8 INCH IRON ROD WITH YELLOW PLASTIC CAP STAMPED "LJA" SET FOR CORNER;

SOUTH 13 DEGREES 30 MINUTES 00 SECONDS EAST, A DISTANCE OF 139.50 FEET TO A 5/8 INCH IRON ROD WITH YELLOW PLASTIC CAP STAMPED "LJA SURVEYING" SET FOR CORNER;

SOUTH 76 DEGREES 30 MINUTES 00 SECONDS WEST, A DISTANCE OF 60.00 FEET TO A 5/8 INCH IRON ROD WITH YELLOW PLASTIC CAP STAMPED "LJA SURVEYING" SET FOR CORNER;

NORTH 13 DEGREES 30 MINUTES 00 SECONDS WEST, A DISTANCE OF 9.50 FEET TO A 5/8 INCH IRON ROD WITH YELLOW PLASTIC CAP STAMPED "LJA SURVEYING" SET FOR CORNER;

SOUTH 76 DEGREES 30 MINUTES 00 SECONDS WEST, A DISTANCE OF 405.10 FEET TO A 5/8 INCH IRON ROD WITH YELLOW PLASTIC CAP STAMPED "LJA SURVEYING" SET FOR CORNER ON THE EAST LINE OF AFORESAID 2.215 ACRE TRACT;

THENCE, SOUTH 13 DEGREES 30 MINUTES 00 SECONDS EAST, ALONG SAID EAST LINE, A DISTANCE OF 200.00 FEET TO A 5/8 INCH IRON ROD WITH YELLOW PLASTIC CAP STAMPED "LJA SURVEYING" SET FOR THE SOUTHEAST CORNER OF SAID 2.215 ACRE TRACT;

THENCE, SOUTH 76 DEGREES 30 MINUTES 00 SECONDS WEST, ALONG THE SOUTH LINE OF SAID 2.215 ACRE TRACT, PASSING AT A DISTANCE OF 402.54 FEET, A 5/8" IRON ROD WITH YELLOW PLASTIC CAP STAMPED "LJA SURVEYING" SET FOR THE SOUTHWEST CORNER OF SAID 2.215 ACRE TRACT, AND CONTINUING OVER AND ACROSS SAID 51.255 ACRE TRACT, IN ALL, A TOTAL DISTANCE OF 423.11 FEET TO A 5/8 INCH IRON ROD WITH YELLOW PLASTIC CAP STAMPED "LJA SURVEYING" SET FOR CORNER ON THE WEST LINE OF SAID 51.255 ACRE TRACT AND THE COMMON EAST LINE OF A TRACT OF LAND CONVEYED TO ROY BRIAN WEBB AND ANDREA KAY CAMPBELL, AS RECORDED IN COUNTY CLERK'S FILE NO. 19991231001566030, OFFICIAL PUBLIC RECORDS, COLLIN COUNTY, TEXAS;

THENCE, NORTH 00 DEGREES 04 MINUTES 26 SECONDS EAST, ALONG SAID COMMON, A DISTANCE OF 267.47 FEET TO A 5/8 INCH IRON ROD WITH YELLOW PLASTIC CAP STAMPED "LJA SURVEYING" SET FOR CORNER;

THENCE, OVER AND ACROSS SAID 51.255 ACRE TRACT, THE FOLLOWING COURSES AND DISTANCES:

NORTH 76 DEGREES 30 MINUTES 00 SECONDS EAST, PASSING AT A DISTANCE OF 20.58 FEET A 5/8" IRON ROD WITH YELLOW PLASTIC CAP STAMPED "LJA SURVEYING" SET FOR THE NORTHWEST CORNER OF SAID 2.215 ACRE TRACT, AND CONTINUING ALONG THE NORTH LINE OF SAID 2.215 ACRE TRACT, PASSING AT A DISTANCE OF 338.76 FEET A 5/8" IRON ROD WITH YELLOW PLASTIC CAP STAMPED "LJA SURVEYING" SET FOR THE NORTHEAST CORNER OF SAID 2.215 ACRE TRACT, AND CONTINUING OVER AND ACROSS SAID 51.255 ACRE TRACT, IN ALL, A TOTAL DISTANCE OF 765.44 FEET TO A 5/8 INCH IRON ROD WITH YELLOW PLASTIC CAP STAMPED "LJA SURVEYING" SET FOR CORNER;

NORTH 13 DEGREES 30 MINUTES 00 SECONDS WEST, A DISTANCE OF 70.00 FEET TO A 5/8 INCH IRON ROD WITH YELLOW PLASTIC CAP STAMPED "LJA SURVEYING" SET FOR CORNER AND THE BEGINNING OF A TANGENT CURVE TO THE RIGHT HAVING A CENTRAL ANGLE OF 07 DEGREES 11 MINUTES 11 SECONDS, A RADIUS OF 880.00 FEET AND A LONG CHORD THAT BEARS NORTH 09 DEGREES 54 MINUTES 25 SECONDS WEST, A DISTANCE OF 110.30 FEET;

ALONG SAID TANGENT CURVE TO THE RIGHT, AN ARC DISTANCE OF 110.37 FEET TO A 5/8 INCH IRON ROD WITH YELLOW PLASTIC CAP STAMPED "LJA" SET FOR CORNER;

NORTH 54 DEGREES 44 MINUTES 39 SECONDS WEST, A DISTANCE OF 13.19 FEET TO A 5/8 INCH IRON ROD WITH YELLOW PLASTIC CAP STAMPED "LJA SURVEYING" SET FOR CORNER;

SOUTH 76 DEGREES 30 MINUTES 00 SECONDS WEST, A DISTANCE OF 7.62 FEET TO A 5/8 INCH IRON ROD WITH YELLOW PLASTIC CAP STAMPED "LJA SURVEYING" SET FOR CORNER;

NORTH 13 DEGREES 30 MINUTES 00 SECONDS WEST, A DISTANCE OF 50.00 FEET TO A 5/8 INCH IRON ROD WITH YELLOW PLASTIC CAP STAMPED "LJA SURVEYING" SET FOR CORNER;

SOUTH 76 DEGREES 30 MINUTES 00 SECONDS WEST, A DISTANCE OF 10.37 FEET TO A 5/8 INCH IRON ROD WITH YELLOW PLASTIC CAP STAMPED "LJA SURVEYING" SET FOR CORNER;

NORTH 13 DEGREES 30 MINUTES 00 SECONDS WEST, A DISTANCE OF 120.00 FEET TO A 5/8 INCH IRON ROD WITH YELLOW PLASTIC CAP STAMPED "LJA SURVEYING" SET FOR CORNER;

SOUTH 76 DEGREES 30 MINUTES 00 SECONDS WEST, A DISTANCE OF 658.75 FEET TO A 5/8 INCH IRON ROD WITH YELLOW PLASTIC CAP STAMPED "LJA SURVEYING" SET FOR CORNER ON SAID WEST LINE OF 51.255 ACRE TRACT AND AFORESAID EAST LINE OF WEBB AND CAMPBELL TRACT.

THENCE, NORTH 00 DEGREES 04 MINUTES 26 SECONDS EAST, ALONG SAID COMMON LINE, A DISTANCE OF 319.16 FEET TO A POINT FOR THE NORTHWEST CORNER OF SAID 51.255 ACRE TRACT, THE COMMON SOUTHWEST CORNER OF AFORESAID 51.716 ACRE TRACT, THE COMMON NORTHEAST CORNER OF SAID WEBB AND CAMPBELL TRACT, AND THE COMMON SOUTHEAST CORNER OF AFORESAID PENMATSAS TRACT, FROM WHICH AN ALUMINUM MONUMENT STAMPED "R-DELTA ENGINEERS 101550" FOUND, BEARS NORTH 88 DEGREES 51 MINUTES 55 SECONDS WEST, A DISTANCE OF 6.93 FEET;

THENCE, NORTH 00 DEGREES 24 MINUTES 21 SECONDS EAST, ALONG THE WEST LINE OF SAID 51.716 ACRE TRACT AND THE COMMON EAST LINE OF SAID PENMATSAS TRACT, A DISTANCE OF 339.80 FEET TO A 5/8 INCH IRON ROD WITH YELLOW PLASTIC CAP STAMPED "LJA SURVEYING" SET FOR CORNER;

THENCE, OVER AND ACROSS SAID 51.716 ACRE TRACT, THE FOLLOWING COURSES AND DISTANCES:

NORTH 79 DEGREES 39 MINUTES 46 SECONDS EAST, A DISTANCE OF 133.39 FEET TO A 5/8 INCH IRON ROD WITH YELLOW PLASTIC CAP STAMPED "LJA SURVEYING" SET FOR CORNER AND THE BEGINNING OF A NON-TANGENT CURVE TO THE LEFT HAVING A CENTRAL ANGLE OF 10 DEGREES 19 MINUTES 46 SECONDS, A RADIUS OF 60.00 FEET AND A LONG CHORD THAT BEARS SOUTH 64 DEGREES 00 MINUTES 07 SECONDS EAST, A DISTANCE OF 96.67 FEET;

ALONG SAID NON-TANGENT CURVE TO THE LEFT, AN ARC DISTANCE OF 112.40 FEET TO A 5/8 INCH IRON ROD WITH YELLOW PLASTIC CAP STAMPED "LJA SURVEYING" SET FOR CORNER AND THE BEGINNING OF A REVERSE CURVE TO THE RIGHT HAVING A CENTRAL ANGLE OF 28 DEGREES 04 MINUTES 21 SECONDS, A RADIUS OF 25.00 FEET AND A LONG CHORD THAT BEARS NORTH 76 DEGREES 22 MINUTES 11 SECONDS EAST, A DISTANCE OF 12.13 FEET;

ALONG SAID REVERSE CURVE TO THE RIGHT, AN ARC DISTANCE OF 12.25 FEET TO A 5/8 INCH IRON ROD WITH YELLOW PLASTIC CAP STAMPED "LJA SURVEYING" SET FOR CORNER;

SOUTH 89 DEGREES 35 MINUTES 39 SECONDS EAST, A DISTANCE OF 65.00 FEET TO A 5/8 INCH IRON ROD WITH YELLOW PLASTIC CAP STAMPED "LJA SURVEYING" SET FOR CORNER AND THE BEGINNING OF A TANGENT CURVE TO THE LEFT HAVING A CENTRAL ANGLE OF 10 DEGREES 31 MINUTES 14 SECONDS, A RADIUS OF 625.00 FEET AND A LONG CHORD THAT BEARS NORTH 85 DEGREES 08 MINUTES 44 SECONDS EAST, A DISTANCE OF 151.27 FEET;

ALONG SAID TANGENT CURVE TO THE LEFT, AN ARC DISTANCE OF 151.49 FEET TO A 5/8 INCH IRON ROD WITH YELLOW PLASTIC CAP STAMPED "LJA SURVEYING" SET FOR CORNER;

NORTH 79 DEGREES 53 MINUTES 07 SECONDS EAST, A DISTANCE OF 288.98 FEET TO A 5/8 INCH IRON ROD WITH YELLOW PLASTIC CAP STAMPED "LJA SURVEYING" SET FOR CORNER AND THE BEGINNING OF A TANGENT CURVE TO THE RIGHT HAVING A CENTRAL ANGLE OF 23 DEGREES 59 MINUTES 17 SECONDS, A RADIUS OF 325.00 FEET AND A LONG CHORD THAT BEARS SOUTH 89 DEGREES 07 MINUTES 14 SECONDS EAST, A DISTANCE OF 135.08 FEET;

ALONG SAID TANGENT CURVE TO THE RIGHT, AN ARC DISTANCE OF 136.07 FEET TO A 5/8 INCH IRON ROD WITH YELLOW PLASTIC CAP STAMPED "LJA SURVEYING" SET FOR CORNER;

NORTH 13 DEGREES 52 MINUTES 24 SECONDS EAST, A DISTANCE OF 50.00 FEET TO A 5/8 INCH IRON ROD WITH YELLOW PLASTIC CAP STAMPED "LJA SURVEYING" SET FOR CORNER;

SOUTH 76 DEGREES 07 MINUTES 36 SECONDS EAST, A DISTANCE OF 11.77 FEET TO A 5/8 INCH IRON ROD WITH YELLOW PLASTIC CAP STAMPED "LJA SURVEYING" SET FOR CORNER;

NORTH 60 DEGREES 26 MINUTES 34 SECONDS EAST, A DISTANCE OF 14.52 FEET TO A 5/8 INCH IRON ROD WITH YELLOW PLASTIC CAP STAMPED "LJA SURVEYING" SET FOR CORNER AND THE BEGINNING OF A NON-TANGENT CURVE TO THE LEFT HAVING A CENTRAL ANGLE OF 17 DEGREES 04 MINUTES 03 SECONDS, A RADIUS OF 845.00 FEET AND A LONG CHORD THAT BEARS NORTH 08 DEGREES 08 MINUTES 22 SECONDS EAST, A DISTANCE OF 250.78 FEET;

ALONG SAID NON-TANGENT CURVE TO THE LEFT, AN ARC DISTANCE OF 251.71 FEET TO A 5/8 INCH IRON ROD WITH YELLOW PLASTIC CAP STAMPED "LJA" SET FOR CORNER;

NORTH 46 DEGREES 45 MINUTES 02 SECONDS WEST, A DISTANCE OF 13.89 FEET TO A 5/8 INCH IRON ROD WITH YELLOW PLASTIC CAP STAMPED "LJA SURVEYING" SET FOR CORNER;

SOUTH 87 DEGREES 13 MINUTES 56 SECONDS WEST, A DISTANCE OF 5.85 FEET TO A 5/8 INCH IRON ROD WITH YELLOW PLASTIC CAP STAMPED "LJA SURVEYING" SET FOR CORNER;

NORTH 02 DEGREES 46 MINUTES 04 SECONDS WEST, A DISTANCE OF 50.00 FEET TO A 5/8 INCH IRON ROD WITH YELLOW PLASTIC CAP STAMPED "LJA SURVEYING" SET FOR CORNER;

NORTH 87 DEGREES 13 MINUTES 56 SECONDS EAST, A DISTANCE OF 5.85 FEET TO A 5/8 INCH IRON ROD WITH YELLOW PLASTIC CAP STAMPED "LJA SURVEYING" SET FOR CORNER;

NORTH 41 DEGREES 25 MINUTES 16 SECONDS EAST, A DISTANCE OF 13.94 FEET TO A 5/8 INCH IRON ROD WITH YELLOW PLASTIC CAP STAMPED "LJA SURVEYING" SET FOR CORNER;

NORTH 04 DEGREES 23 MINUTES 23 SECONDS WEST, A DISTANCE OF 222.17 FEET TO A 5/8 INCH IRON ROD WITH YELLOW PLASTIC CAP STAMPED "LJA SURVEYING" SET FOR CORNER;

NORTH 49 DEGREES 23 MINUTES 23 SECONDS WEST, A DISTANCE OF 14.14 FEET TO A 5/8 INCH IRON ROD WITH YELLOW PLASTIC CAP STAMPED "LJA SURVEYING" SET FOR CORNER;

SOUTH 85 DEGREES 36 MINUTES 37 SECONDS WEST, A DISTANCE OF 5.00 FEET TO A 5/8 INCH IRON ROD WITH YELLOW PLASTIC CAP STAMPED "LJA SURVEYING" SET FOR CORNER;

NORTH 04 DEGREES 23 MINUTES 23 SECONDS WEST, A DISTANCE OF 50.00 FEET TO A 5/8 INCH IRON ROD WITH YELLOW PLASTIC CAP STAMPED "LJA SURVEYING" SET FOR CORNER;

NORTH 87 DEGREES 13 MINUTES 56 SECONDS EAST, A DISTANCE OF 5.85 FEET TO A 5/8 INCH IRON ROD WITH YELLOW PLASTIC CAP STAMPED "LJA SURVEYING" SET FOR CORNER;

NORTH 41 DEGREES 25 MINUTES 16 SECONDS EAST, A DISTANCE OF 13.94 FEET TO A 5/8 INCH IRON ROD WITH YELLOW PLASTIC CAP STAMPED "LJA SURVEYING" SET FOR CORNER;

NORTH 04 DEGREES 23 MINUTES 23 SECONDS WEST, A DISTANCE OF 50.00 FEET TO A 5/8 INCH IRON ROD WITH YELLOW PLASTIC CAP STAMPED "LJA SURVEYING" SET FOR CORNER;

NORTH 85 DEGREES 36 MINUTES 37 SECONDS EAST, A DISTANCE OF 5.00 FEET TO A 5/8 INCH IRON ROD WITH YELLOW PLASTIC CAP STAMPED "LJA SURVEYING" SET FOR CORNER;

NORTH 40 DEGREES 36 MINUTES 37 SECONDS EAST, A DISTANCE OF 14.14 FEET TO A 5/8 INCH IRON ROD WITH YELLOW PLASTIC CAP STAMPED "LJA SURVEYING" SET FOR CORNER;

NORTH 04 DEGREES 23 MINUTES 23 SECONDS WEST, A DISTANCE OF 110.00 FEET TO A 5/8 INCH IRON ROD WITH YELLOW PLASTIC CAP STAMPED "LJA SURVEYING" SET FOR CORNER;

SOUTH 85 DEGREES 36 MINUTES 37 SECONDS WEST, A DISTANCE OF 260.00 FEET TO A 5/8 INCH IRON ROD WITH YELLOW PLASTIC CAP STAMPED "LJA SURVEYING" SET FOR CORNER;

SOUTH 84 DEGREES 18 MINUTES 02 SECONDS WEST, A DISTANCE OF 39.08 FEET TO A 5/8 INCH IRON ROD WITH YELLOW PLASTIC CAP STAMPED "LJA SURVEYING" SET FOR CORNER;

SOUTH 81 DEGREES 40 MINUTES 52 SECONDS WEST, A DISTANCE OF 39.08 FEET TO A 5/8 INCH IRON ROD WITH YELLOW PLASTIC CAP STAMPED "LJA SURVEYING" SET FOR CORNER;

SOUTH 79 DEGREES 23 MINUTES 48 SECONDS WEST, A DISTANCE OF 44.57 FEET TO A 5/8 INCH IRON ROD WITH YELLOW PLASTIC CAP STAMPED "LJA SURVEYING" SET FOR CORNER;

SOUTH 79 DEGREES 08 MINUTES 40 SECONDS WEST, A DISTANCE OF 135.00 FEET TO A 5/8 INCH IRON ROD WITH YELLOW PLASTIC CAP STAMPED "LJA SURVEYING" SET FOR CORNER;

SOUTH 80 DEGREES 56 MINUTES 38 SECONDS WEST, A DISTANCE OF 63.35 FEET TO A 5/8 INCH IRON ROD WITH YELLOW PLASTIC CAP STAMPED "LJA SURVEYING" SET FOR CORNER;

SOUTH 87 DEGREES 07 MINUTES 58 SECONDS WEST, A DISTANCE OF 56.53 FEET TO A 5/8 INCH IRON ROD WITH YELLOW PLASTIC CAP STAMPED "LJA SURVEYING" SET FOR CORNER;

NORTH 89 DEGREES 35 MINUTES 39 SECONDS WEST, A DISTANCE OF 85.00 FEET TO A 5/8 INCH IRON ROD WITH YELLOW PLASTIC CAP STAMPED "LJA SURVEYING" SET FOR CORNER;

SOUTH 00 DEGREES 24 MINUTES 21 SECONDS WEST, A DISTANCE OF 18.76 FEET TO A 5/8 INCH IRON ROD WITH YELLOW PLASTIC CAP STAMPED "LJA SURVEYING" SET FOR CORNER;

NORTH 89 DEGREES 35 MINUTES